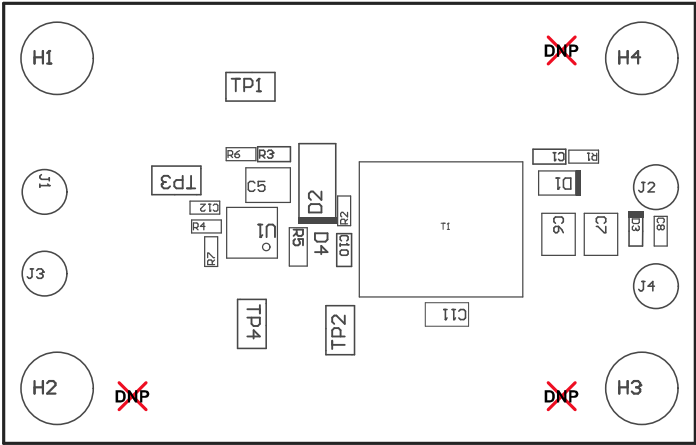
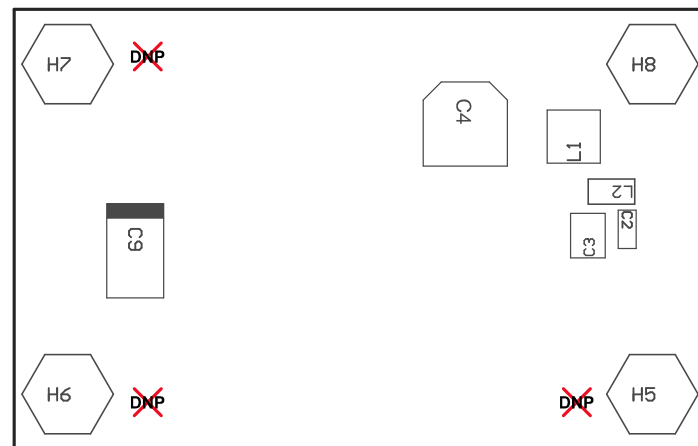


- ZZ2 ■ These assemblies must be clean and free from flux and all contaminants. Use of no clean flux is not acceptable.
- ZZ3 ■ These assemblies must comply with workmanship standards IPC-A-610 Class 2., unless otherwise specified.
- ZZ4 ■ Mounting hardware H1 thru H8 to be installed in corner holes provided. Screw inserted from component side, standoff on solder side.



COMPONENTS MARKED 'DNP' SHOULD NOT BE POPULATED.
ASSEMBLY VARIANT: 001

PCB VIEWED FROM TOP SIDE	BOARD #: BSR110	REV: A	SUN REV: 485
	TID #: N/A		
PLOT NAME = Top Assembly Drawing	GENERATED : 1/20/2020 10:01:20 AM	TEXAS INSTRUMENTS	



COMPONENTS MARKED 'DNP' SHOULD NOT BE POPULATED.
 ASSEMBLY VARIANT: 001

PCB VIEWED FROM BOTTOM SIDE	BOARD #: BSR110	REV: A	SUN REV: 485
	TID #: N/A		
PLOT NAME = Bottom Assembly Drawing	GENERATED : 1/20/2020 10:01:21 AM		TEXAS INSTRUMENTS