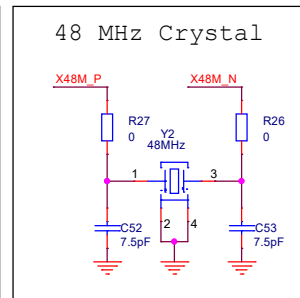
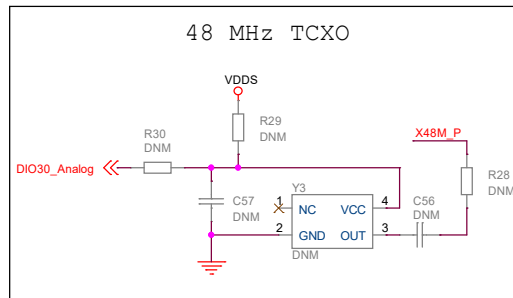
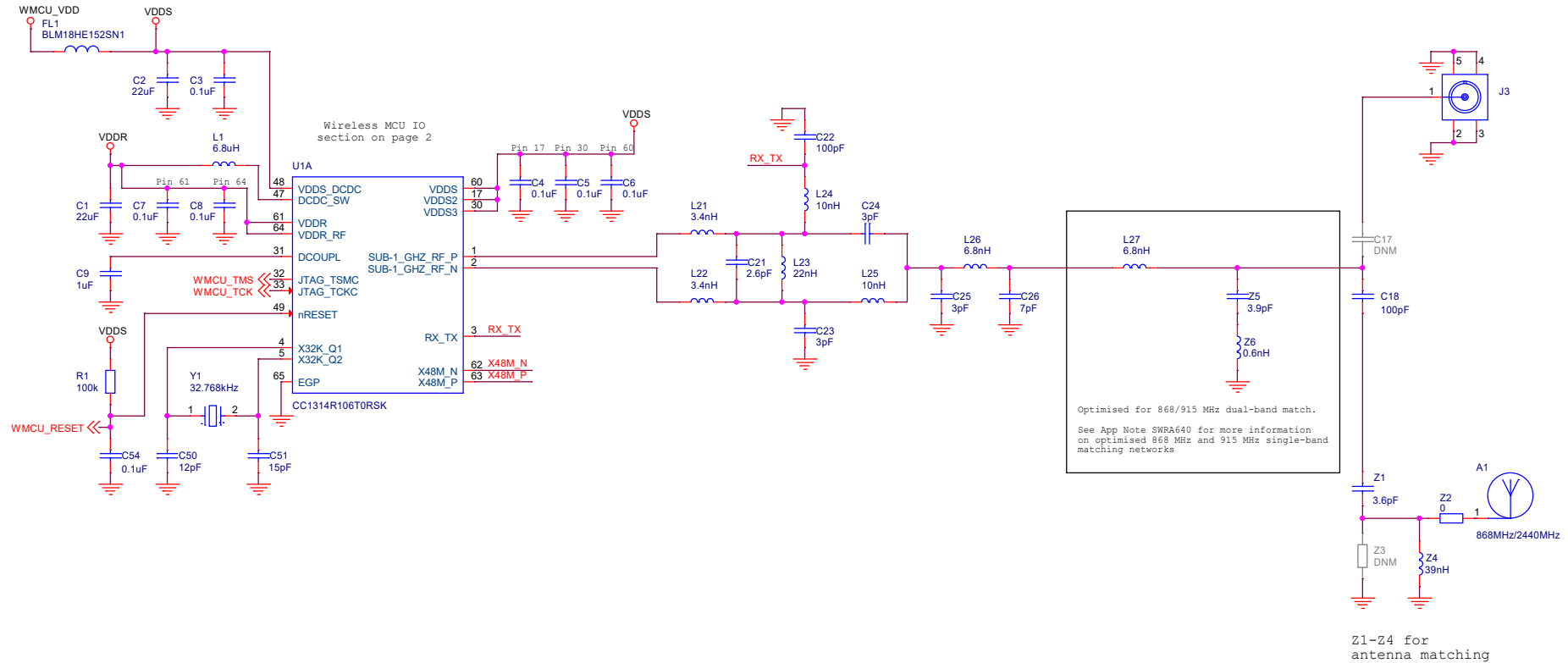



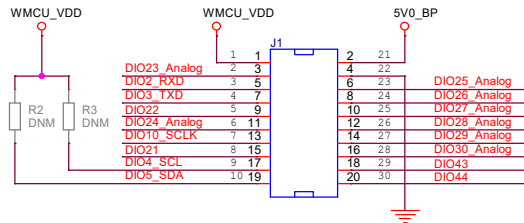
Wireless MCU RF

Wireless MCU IO block placed on page 2

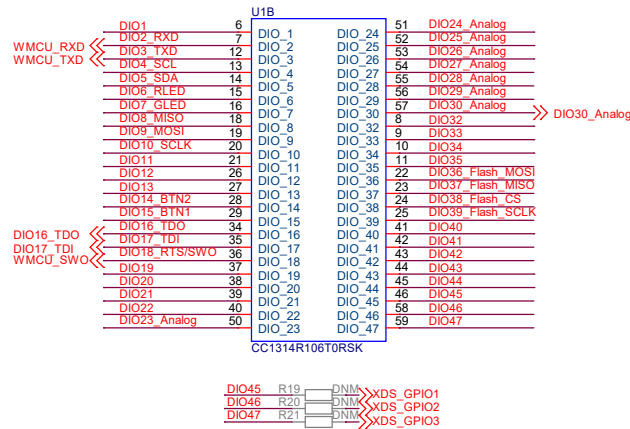


Title: LP-EM-CC1314R10		 TEXAS INSTRUMENTS	
Drawn: EB		PN: MCU085	
Checked: RS			
Size: A3	Rev: A	Sheet: 1 of 4	
Date: Tuesday, September 27, 2022			

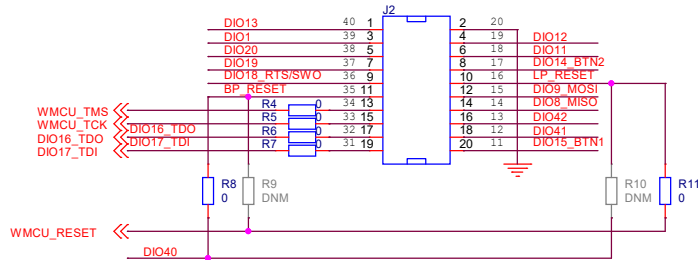
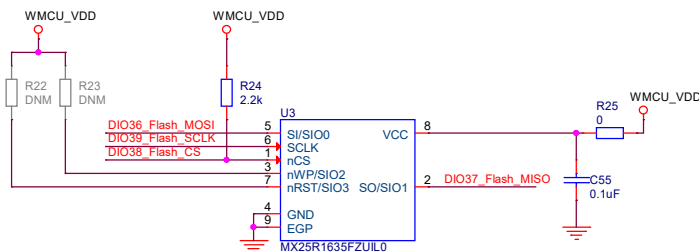
BoosterPack Headers and Peripherals



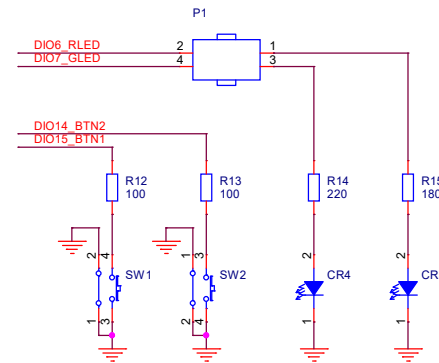
Wireless MCU IO block



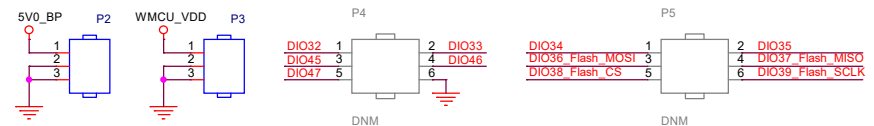
External flash



Buttons / LEDs



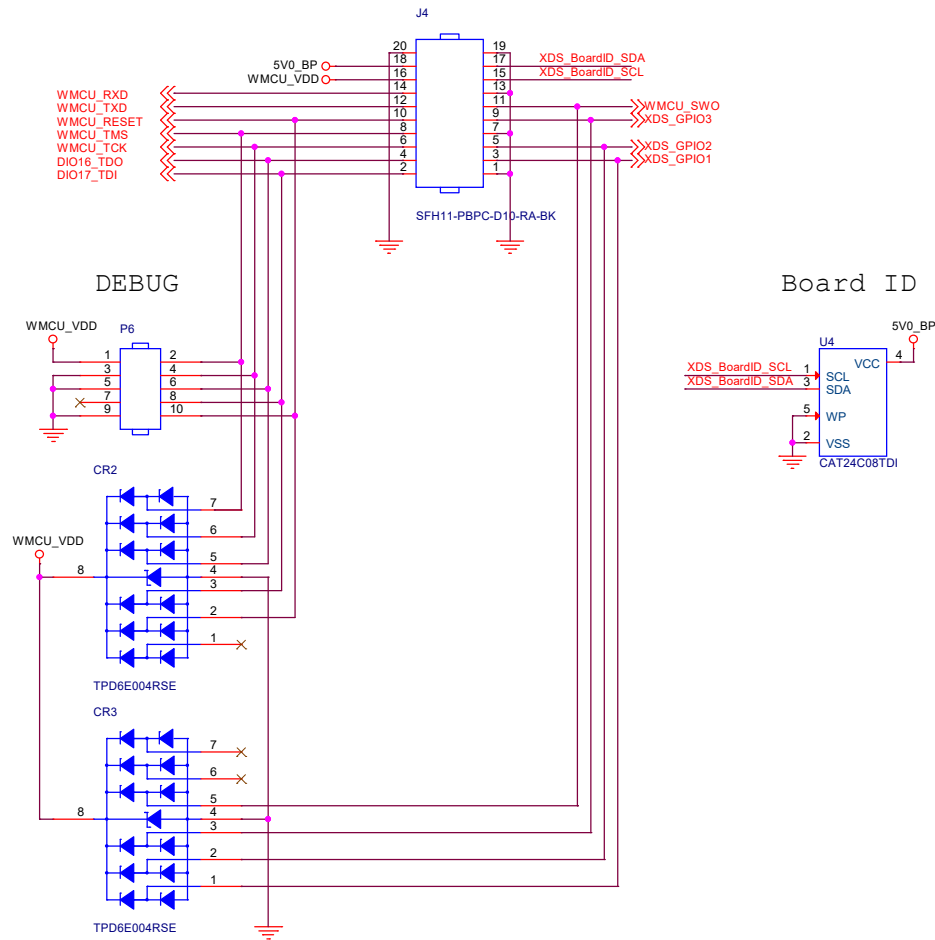
Extra headers




Title: LP-EM-CC1314R10		TEXAS INSTRUMENTS	
Drawn: EB		PN: MCU085	
Checked: RS			
Size: A3	Rev: A	Sheet: 2	of 4
Date:		Tuesday, September 27, 2022	

XDS110 Debugger Interface

Use P5 for debugging
the wireless MCU with an
external debugger
(requires that all
jumpers be removed)



Title: LP-EM-CC1314R10		 TEXAS INSTRUMENTS	
Drawn: EB		PN: MCU085	
Checked: RS			
Size: A3		Rev: A	
		Sheet: 3 of 4	
Date: Tuesday, September 27, 2022			

Mechanical

Labels



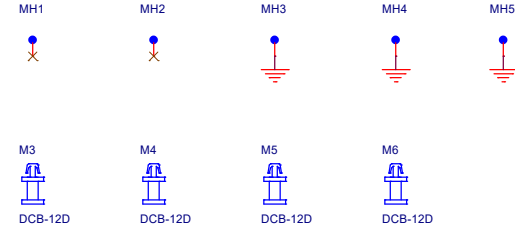
Fiducials




Jumpers (P1)



Mounting Holes



Title: LP-EM-CC1314R10		 TEXAS INSTRUMENTS
Drawn: EB		PN: MCU085
Checked: RS		
Size: A3	Rev: A	Sheet: 4 of 4
Date: Tuesday, September 27, 2022		