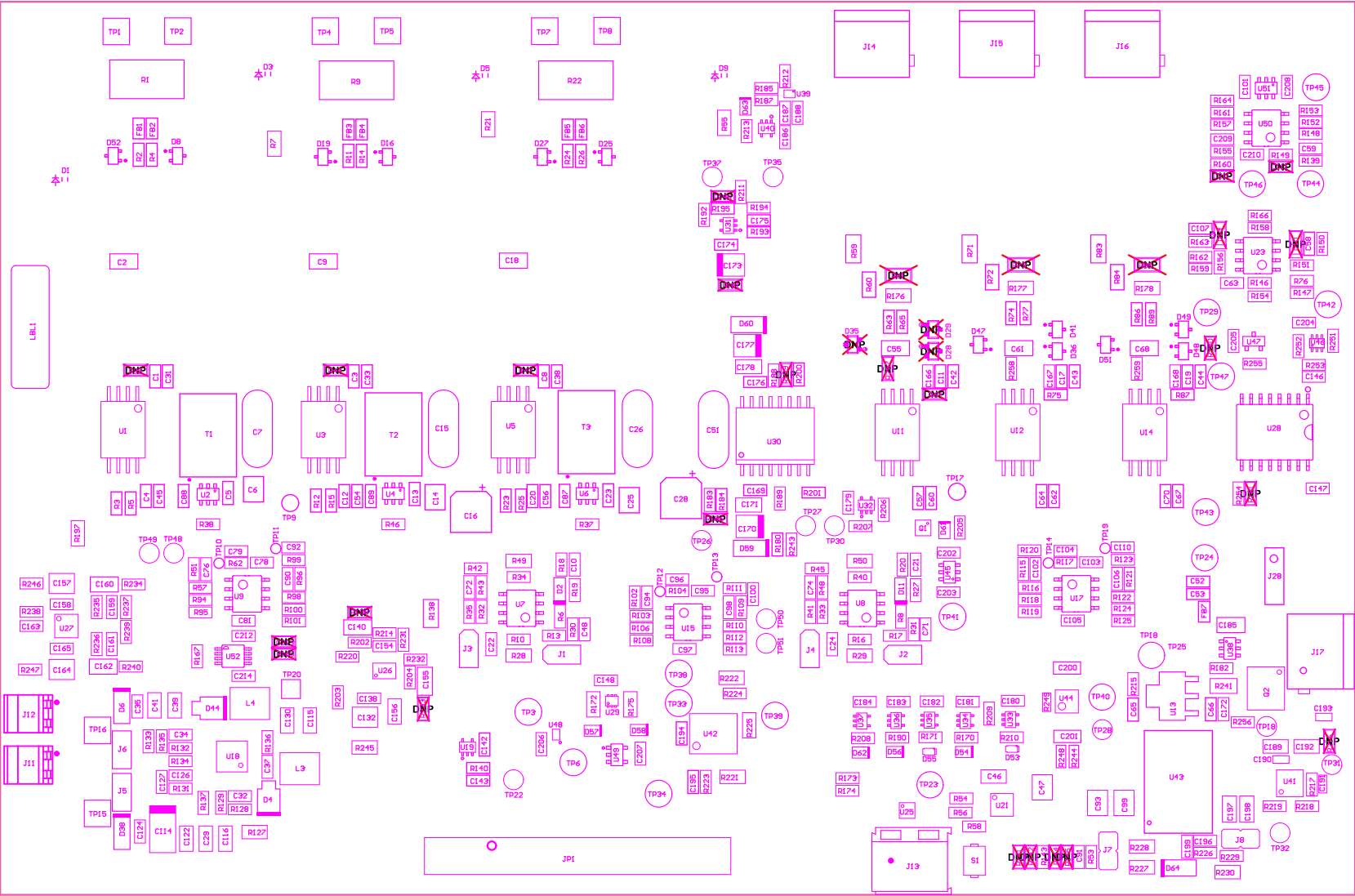


- 221 ■ Install label in silkscreened box after final wash. Text shall be 8 pt font. Text shall be per the Label Table in the PDF schematic.
- 222 ■ These assemblies are ESD sensitive, ESD precautions shall be observed.
- 223 ■ These assemblies must be clean and free from flux and all contaminants. Use of no clean flux is not acceptable.
- 224 ■ These assemblies must comply with workmanship standards IPC-A-610 Class 2, unless otherwise specified.

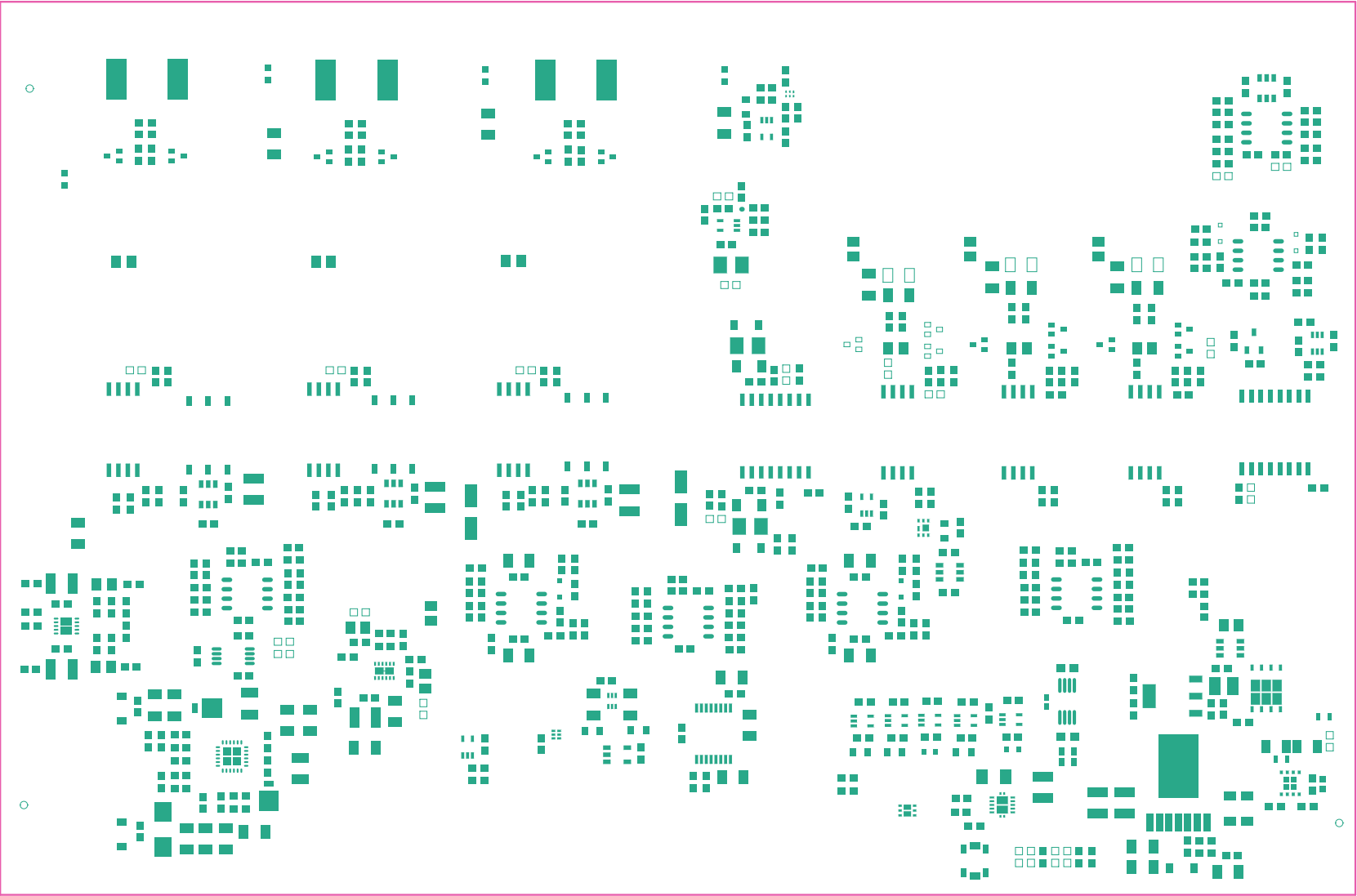


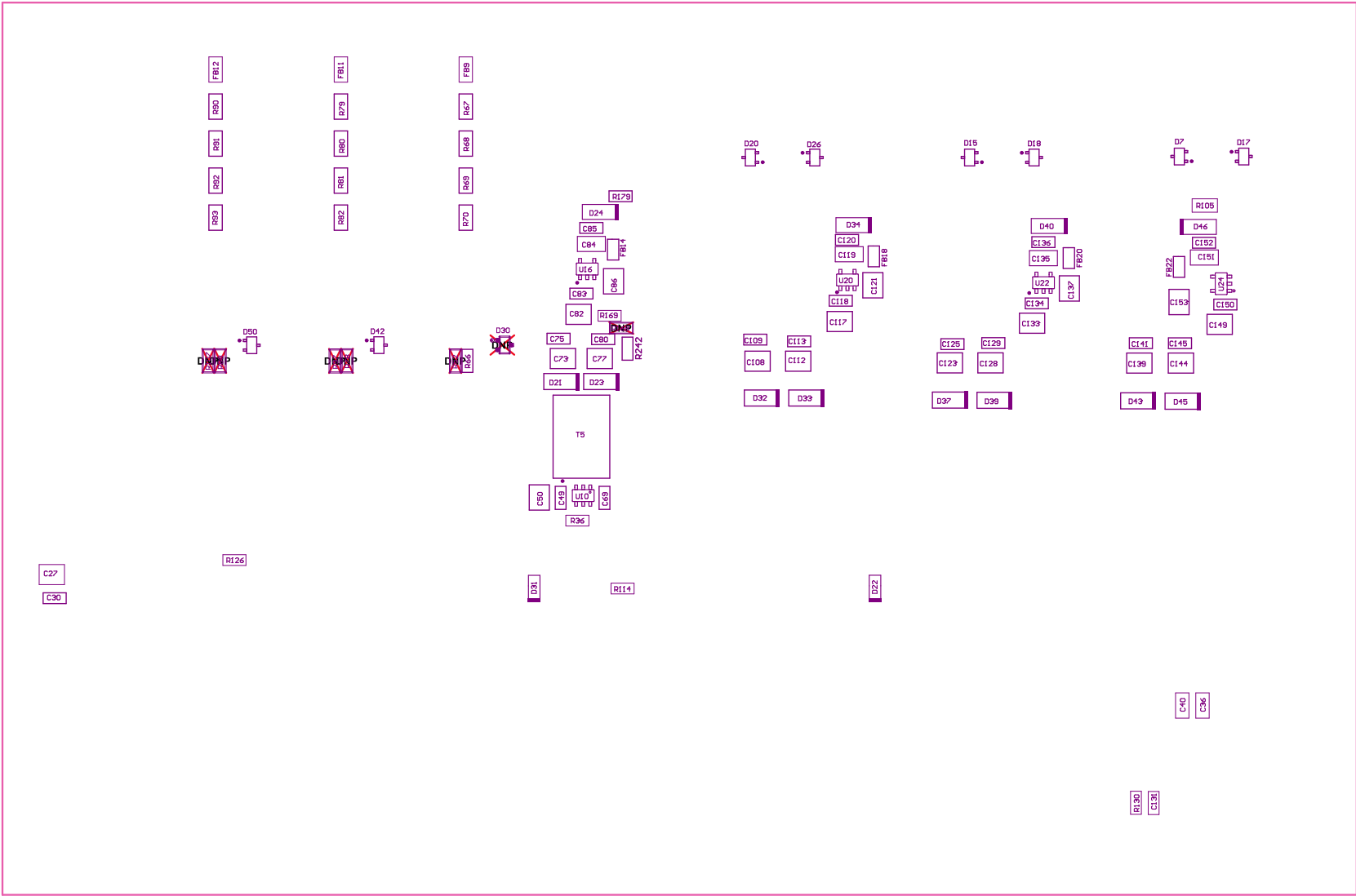
COMPONENTS MARKED 'DNP' SHOULD NOT BE POPULATED.

ASSEMBLY VARIANT:

001

PCB VIEWED FROM TOP SIDE	BOARD #:	TIDA-010065_A0C_A1H	REV:	E2	SUN REV:	Not In VersionControl
LAYER NAME =	Top Assembly	TID#:	010065			
PLOT NAME =	Top LayerAssembly Drawing	GENERATED :	9/12/2019	10:53:20 AM	TEXAS INSTRUMENTS	





COMPONENTS MARKED "DNP" SHOULD NOT BE POPULATED.

ASSEMBLY VARIANT: 001

PCB VIEWED FROM BOTTOM SIDE	BOARD #:	TIDA-D10065_ADC_A1M1	REV:	E2	SUN REV:	Not In VersionControl
LAYER NAME =	Bottom Assembly	TID#: D10065				
PLOT NAME =	Bottom LayerAssembly Drawing	GENERATED :	9/12/2019	10:53:22 AM	TEXAS INSTRUMENTS	

