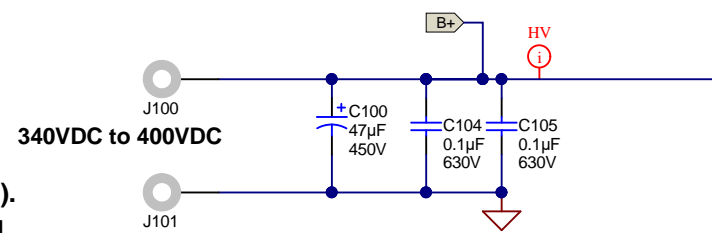
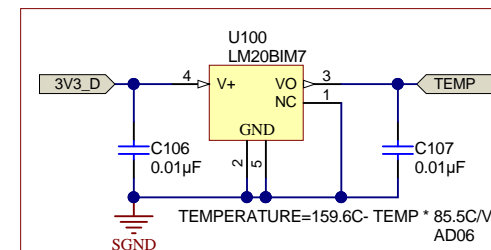
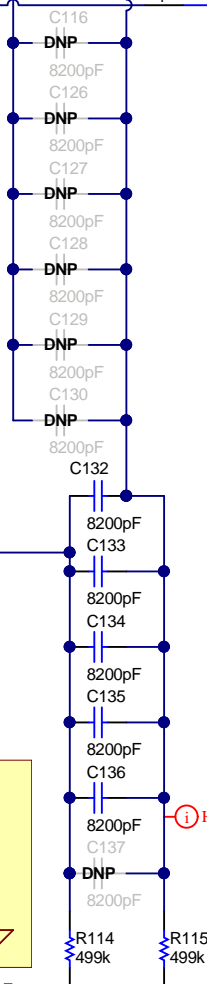
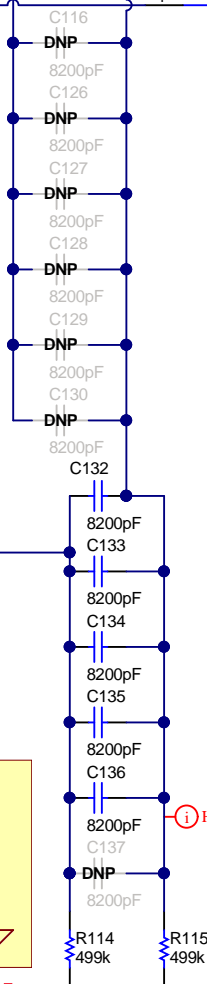
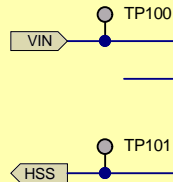
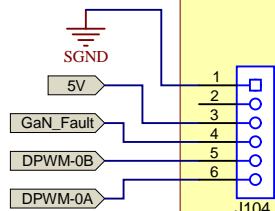


Notes:

1. Minimum switching frequency: 250kHz
2. Maximum switching frequency: 850kHz
3. Change R100 on PMP20285_UCD3138A_DC RevA to 10.0kohm).
4. Add C901, C902, D901, R901, R902, R903 circuit on main board.

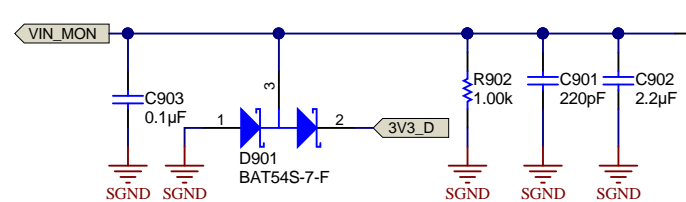


To LMG3410-HB-EVM (SV601254-E)

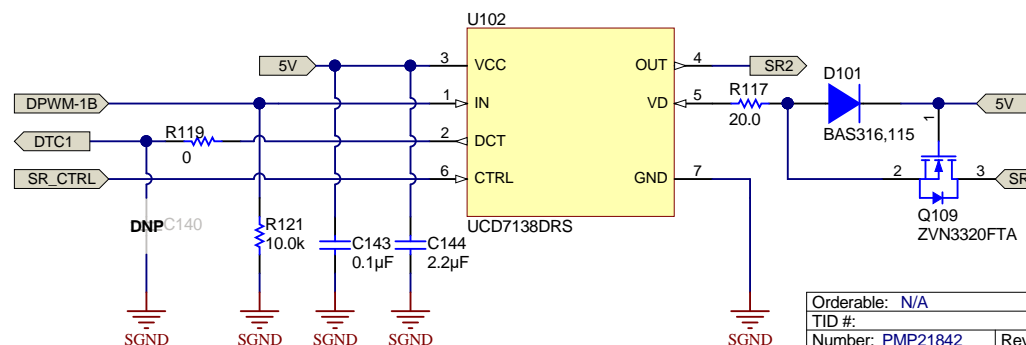
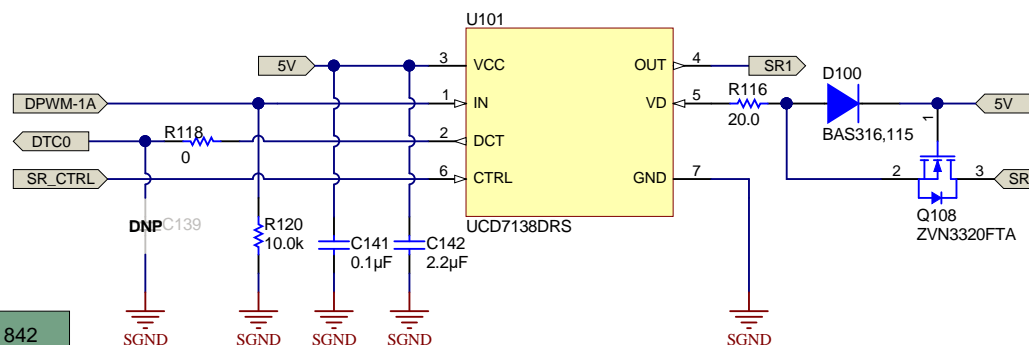


Build on PMP21309 PCB

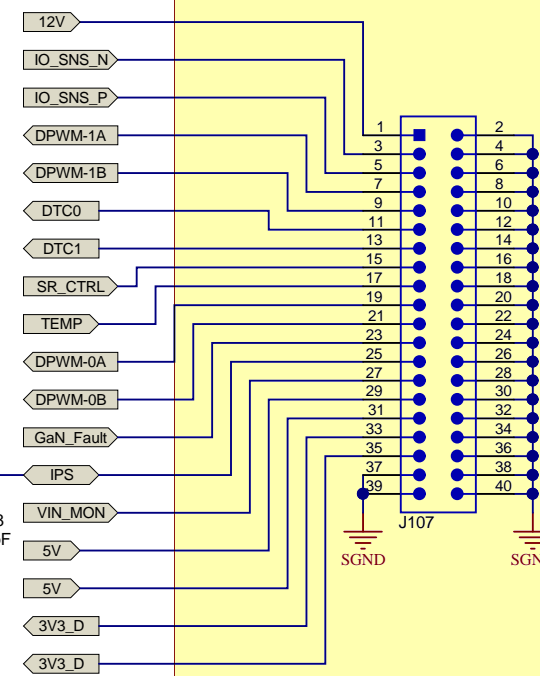
Link to bias supply daughter card (PMP20306RevA)



Secondary side Primary side



Link to controller card (PMP20285_UCD3138A_DC RevA)



PCB Number: PMP21842
PCB Rev: A

Texas Instruments and/or its licensors do not warrant the accuracy or completeness of this specification or any information contained therein. Texas Instruments and/or its licensors do not warrant that this design will meet the specifications, will be suitable for your application or fit for any particular purpose, or will operate in an implementation. Texas Instruments and/or its licensors do not warrant that the design is production worthy. You should completely validate and test your design implementation to confirm the system functionality for your application.

Orderable: N/A	Designed for: Public Release	Mod. Date: 11/29/2018
TID #: PMP21842	Project Title: 390V to 12V/500W LLC	
Number: PMP21842	Rev: A	Sheet Title:
SVN Rev: Not in version control	Assembly Variant: 001	Sheet: 1 of 1
Drawn By:	File: PMP11432_BlankSheet.SchDoc	Size: B
Engineer: Sheng-Yang Yu	Contact: http://www.ti.com/support	

TEXAS
INSTRUMENTS
http://www.ti.com
© Texas Instruments 2018