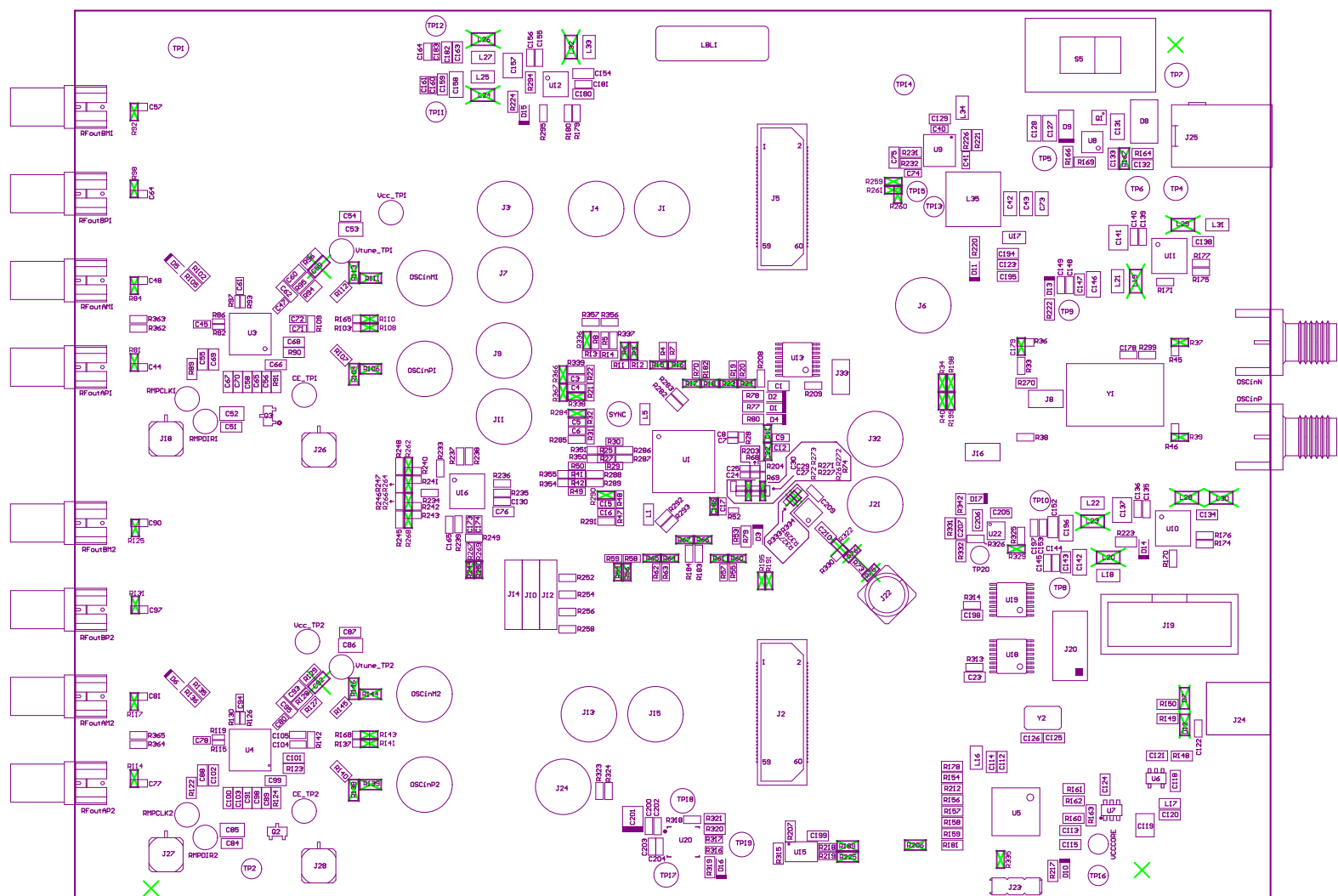
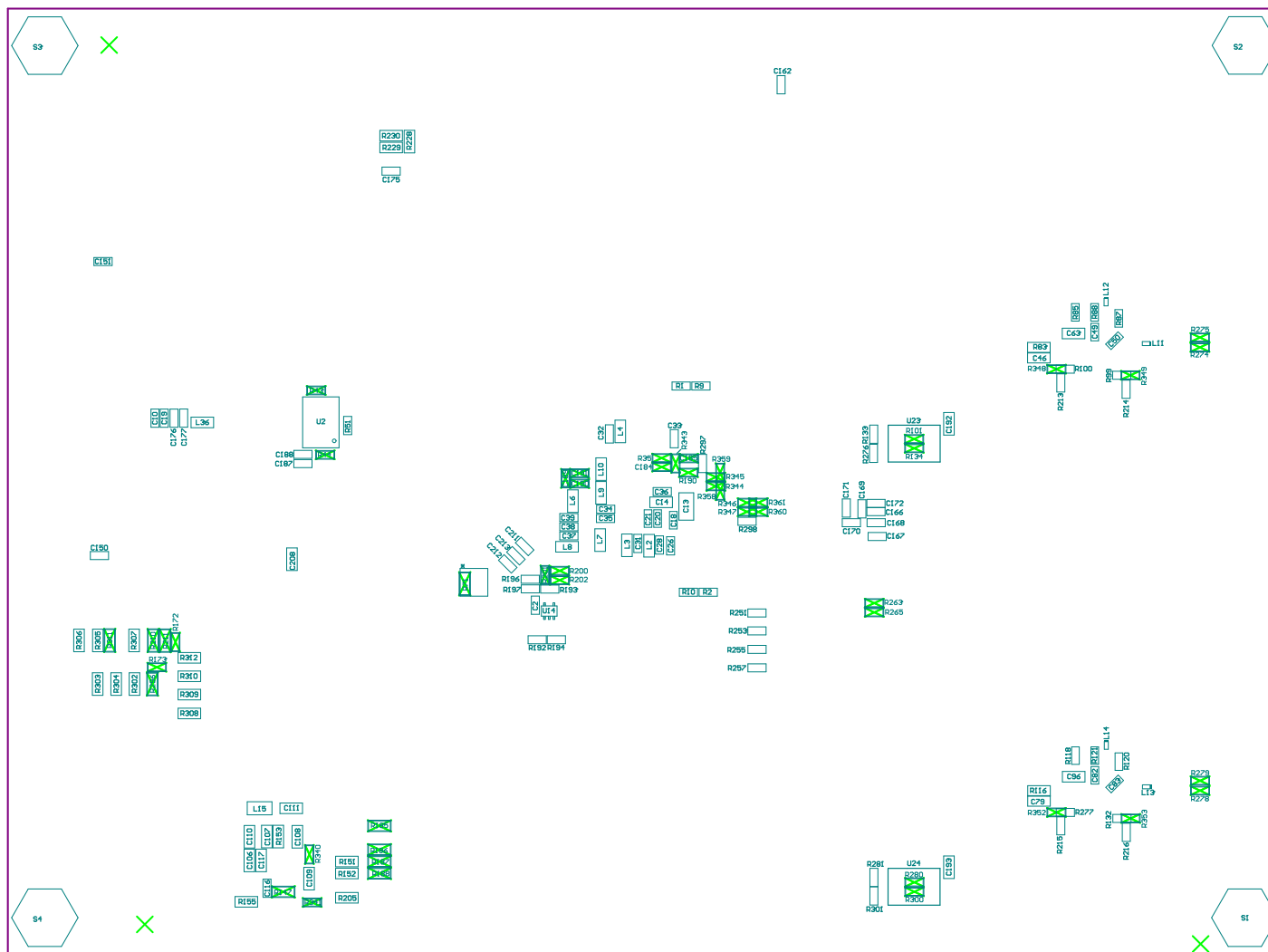


- Z21 ■ Install label in silkscreened box after final wash. Text shall be 8 pt font. Text shall be per the Label Table in the PDF schematic.  
 Z22 ■ These assemblies are ESD sensitive, ESD precautions shall be observed.  
 Z23 ■ These assemblies must be clean and free from flux and all contaminants. Use of no clean flux is not acceptable.  
 Z24 ■ These assemblies must comply with workmanship standards IPC-A-610 Class 2, unless otherwise specified.



COMPONENTS MARKED "DNP" SHOULD NOT BE POPULATED.  
 ASSEMBLY VARIANT: 001

PCB VIEWED FROM TOP SIDE	BOARD #:	TID-010131	REV: E3	SUN REV:
IGNORE -> ASSEMBLY TOP	TID #:	010131		
PLOT NAME = Top Assembly Drawing	GENERATED :	2/13/2019	3:52:54 PM	TEXAS INSTRUMENTS



COMPONENTS MARKED 'DNP' SHOULD NOT BE POPULATED.

ASSEMBLY VARIANT:

001

PCB VIEWED FROM BOTTOM SIDE:	BOARD #:	TIDA-01013K	REV:	E3	SUN REV:
LAYER NAME =	ASSEMBLY BOTTOM				
PLOT NAME =	TIO #:	01013K	[IGNORE ->]		
	GENERATED	2/13/2018	3:52:55 PM	TEXAS INSTRUMENTS	