

Precision Current Sources and Sinks Using Voltage References



Marcos Zamora

ABSTRACT

Current sources and sinks are common circuits for many applications such as LED drivers and sensor biasing. Popular current references like the [LM134](#) and [REF200](#) are designed to make this choice easier by requiring minimal external components to cover a broad range of applications. However, sometimes the requirements of the project demand a little more than what these devices can provide or set constraints that make them inconvenient to implement. For these cases, with a voltage reference such as the [TL431](#) and a few external components, one can create a simple current bias with high performance that is flexible to fit meet the application requirements. Current sources and sinks have been covered extensively in other Texas Instruments application notes such as [SBOA046](#) and [SLYC147](#), but this application note discusses other common current sources that have not been previously discussed.

Table of Contents

1 Precision Voltage References	2
2 Current Sink with Voltage References	2
2.1 Current Sink With the Shunt Voltage Reference ATL431LI (TL431 Equivalent).....	2
2.2 Current Sink With Series Reference.....	4
2.3 Current Sink With REF3425.....	4
3 Current Source With Voltage References	5
3.1 Current Source With the ATL431LI (TL431 Equivalent).....	5
3.2 Current Sourcing With the LM4041-N.....	6
3.3 Current Source With Series Voltage Reference.....	6
4 Summary	7
5 References	7
6 Revision History	8

Trademarks

All trademarks are the property of their respective owners.

1 Precision Voltage References

The key component in creating discrete precision current reference is a precision voltage reference. There are two types of voltage reference architectures, shunt and series. Shunt references are similar in functionality to Zener diodes whereas series references are similar to linear regulators. Series references are precision voltage regulators that generally are able to provide a higher accuracy voltage compared to shunt references. Shunt and series references are able to provide different levels of accuracy and architecture to meet most applications due to the internal bandgap with temperature compensation. While an ideal current source can sink and source current to load, a discrete current source is generally set up for either sinking or sourcing. The following application note discusses how to create current sources and sinks with both shunt and series references..

2 Current Sink with Voltage References

A precision current sink can be created with the combination of a transistor, amplifier, and voltage reference. [Figure 2-1](#) shows the basic concept of a current sink which consists of an op amp that regulates the voltage across the resistor to create a regulated current sink. In this configuration, V_X represents either a shunt or series voltage reference. The lower the V_X voltage the lower the head room that is required this configuration. This configuration is used in [Tips and tricks for designing with voltage references](#) in greater detail. Current sinks are often for applications such as LED driving, battery discharging, thermocouples, and sensor biasing.

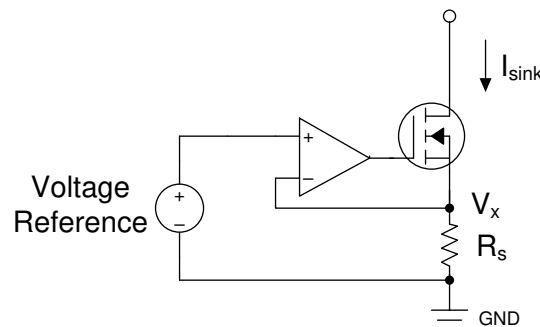


Figure 2-1. Current Sink Block Diagram

2.1 Current Sink With the Shunt Voltage Reference ATL431LI (TL431 Equivalent)

Shunt references come in fixed and adjustable voltage variants. The most common adjustable shunt references are the TL431 and [LM4041-N](#) that have similar functionality but different characteristic and functionality that allow them to be preferred in different current source and sink applications. A TL431 regulates the output voltage with the feedback loop from CATHODE and REF. The LM4041-N operated different compared to the TL431 because the LM4041-N feedback loop is between the FB and ANODE.

The schematic in [Figure 2-1](#) can further simplified by using a TL431 device by taking advantage of the internal error amplifier of the TL431 as this eliminates the need for an additional op amp. The TL431 CATHODE to REF feedback loop allows the insertion of a transistor to allow the regulation of V_X to be V_{REF} across R_S . This level of integration with the TL431 works for all 431 like products because they share the same architecture as shown in [Figure 2-2](#).

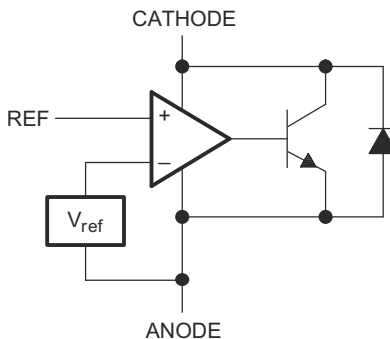


Figure 2-2. TL431 Functional Block Diagram

Figure 2-3 shows the ATL431LI which is a TL431 equivalent with a lower $I_{KA(min)}$ being used in current sink mode. This schematic is common in LED drivers as the level of accuracy and bandwidth allow for a higher level of accuracy with minimal external components.

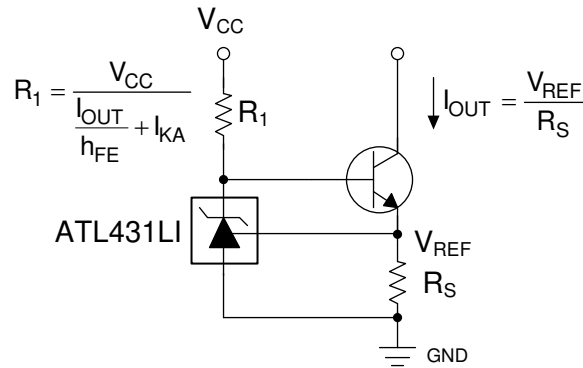


Figure 2-3. Current Sink with the ATL431LI

- R_1 = Input bias resistor (Ω)
- R_S = Current sense resistor(Ω)
- I_{OUT} = Output current source (A)
- I_{KA} = Cathode current (A)
- V_{REF} = Internal feedback reference (approximately 2.5V)
- V_{CC} = Input supply voltage (V)
- h_{FE} = Transistor DC current gain

The base of the transistor is controlled by the ATL431LI, which changes the base current in response to the change in voltage across R_S using feedback from the internal op amp. Since the only path for the load current to flow is through R_S , controlling the voltage across R_S controls the current through the load. Stability can be improved in the system with a biasing capacitor between cathode and reference but this lowers the response time of the circuit. The main sources of error in this application are the ATL431LI and the accuracy of R_S and temperature drift. The total error across temperature can be around 1% to 2% depending on ATL431LI accuracy grade variants.

The main benefit of using the ATL431LI is that the value of R_1 can be increased due to the lower $I_{KA(min)}$ of the ATL431LI which allows for a lower system I_Q . In this current sink application, the I_{KA} is separate from I_{OUT} which makes the I_{OUT} accuracy not be largely affected by variations on I_{KA} or V_{CC} . The ATL431LI is available in an X2SON package which allows for a much smaller footprint compared to a TL431 SOT23-3. A typical application for current sink is LED driving and with a smaller ATL431LI size, more LEDs can fit on a given PCB. TLV431 can also be used in place of the ATL431LI in situations where the system needs more head room due to the 1.24V bandgap of the TLV431.

In current sink applications such as Figure 2-3, the transistor can be interchanged between NPN and NMOS as long as the limitations are understood. NPNs require a smaller over head voltage compared to a NMOS but NPNs do have higher current sink requirements due to the base current. When using a NPN to sink high amounts of current in the magnitude of 1A and greater, use a Darlington pair due to the high base current requirement.

2.2 Current Sink With Series Reference

Figure 2-1 shows that a voltage reference is needed to create a precision current sink and while shunt references can be used in current sinks, they do not provide the high accuracy that a series voltage can provide. The REF3425 is a high precision voltage reference that can be used to create a 0.1% total error voltage reference as shown in Figure 2-4. This type of topology also has additional benefits in terms of voltage headroom for the load. The amount of headroom based on the type of transistor used as shown in Equation 1 and Equation 2. This headroom is the maximum voltage the load can have while maintaining the regulated current. For example, in certain applications such as LED drivers, the voltage headroom determines the amount of LEDs in series. When using a 5V rail, it can be difficult to stack two red LEDs or a blue LED when the voltage reference is 2.5V. In Figure 2-4, a voltage divider is used to divide the REF3425 voltage down to 0.5V which allows for more headroom.

$$V_{\text{headroom}} = V_{\text{DD}} - V_{\text{Rs}} - V_{\text{CE}} \quad (1)$$

$$V_{\text{headroom}} = V_{\text{DD}} - V_{\text{Rs}} - V_{\text{DS}} \quad (2)$$

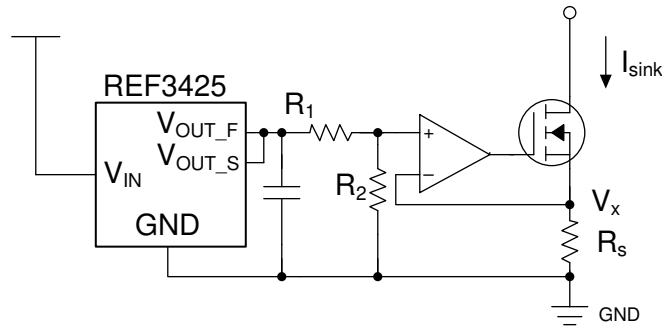


Figure 2-4. Current Sink Using Series Reference with Voltage Divider

2.3 Current Sink With REF3425

Voltage references such as the REF3425 can be used as single active device designs to current sink applications. The force and sense output of the REF34 family allows the NPN to be controlled and regulated by the REF3425 such as in Figure 2-5. In this application the REF3425 must be sourced with a voltage higher than $V_{\text{OUT}} (2.5\text{V}) + V_{\text{BE}} (0.7\text{V})$ for proper regulation.

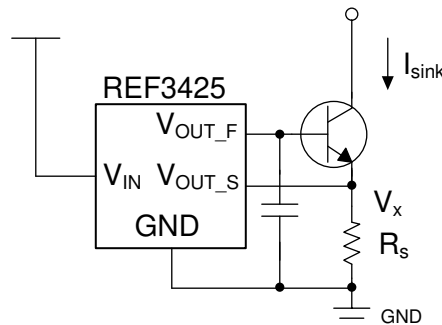


Figure 2-5. Current Sink Using the REF3425

3 Current Source With Voltage References

A precision current source can be created with a similar structure as a current sink. The main difference is the current source sources current to the load to ground which allows support for different kinds of applications. Current sources can be used to charge batteries, LED driving, temperature sensor biasing, and multimeters. Current sources have the benefit of having the load referenced connected directly to an independent ground. A direct connection for the load to ground allows the load voltage to be compared directly to ground for voltage and current measurement for sensors.

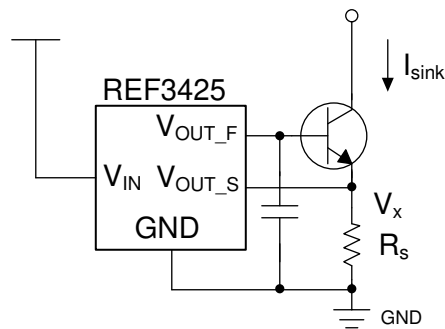


Figure 3-1. Temp Sensor with Current Source

3.1 Current Source With the ATL431LI (TL431 Equivalent)

The ATL431LI can also current source by connecting the load on the GND side. The main drawback of current sourcing the ATL431LI is that the accuracy of the current is a combination of the ATL431LI bias current and the current through the transistor. For a more accurate current sink the I_{R_S} must be significantly larger than I_{K_A} bias current.

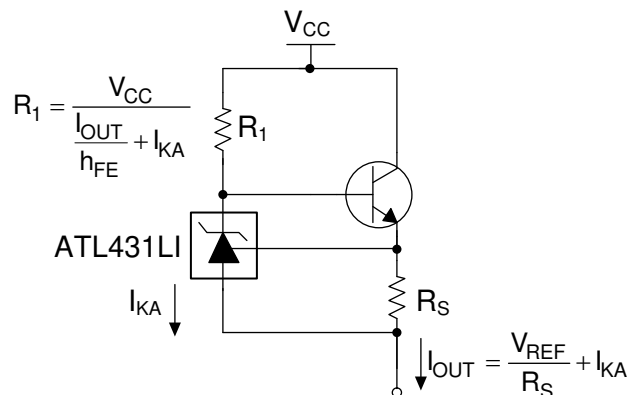


Figure 3-2. Current Sourcing with the ATL431LI

This application circuit is explored in greater detail in [SLYT768](#) with a stronger focus on the TLVH431 but the application concepts also applies to the ATL431LI and TL431.

3.2 Current Sourcing With the LM4041-N

TI's LM4041-N ADJ is a preferred design in current sourcing because the feedback voltage on FB is with respect to CATHODE unlike the ATL431LI. This allows the LM4041-N ADJ in current source configuration to have the I_{OUT} be independent of I_{KA} . The benefit of the LM4041-N ADJ over the ATL431LI is the higher accuracy and simplified schematic.

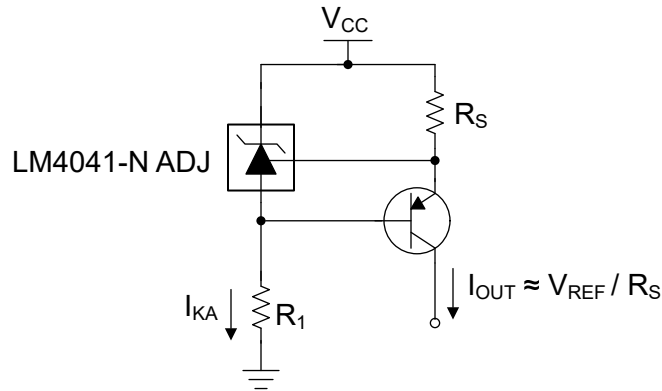


Figure 3-3. Current Sourcing with the LM4041-N ADJ

- R_1 = Input bias resistor (Ω)
- R_S = Current sense resistor(Ω)
- I_{OUT} = Output current source (A)
- I_{KA} = Cathode current (A)
- V_{REF} = Internal feedback reference (approximately 1.2V)
- h_{FE} = Transistor DC current gain

The current supplied to the load is controlled by the R_S resistor and the LM4041-N enforcing a 1.2 volt drop across it. The PNP transistor regulates the current through the load based on the feedback from the LM4041-N. If current supplied to the load decreases, the internal op amp of the LM4041 readjusts the correct voltage across R_S by draining more current from the base of the transistor. The I_{OUT} is reduced by the base current which is calculated using the h_{FE} . For high accuracy applications, a PNP Darlington pair can be used to reduce the base current draw.

3.3 Current Source With Series Voltage Reference

A series voltage reference can be used to increase the accuracy of a current source. In [SBVA001](#) and [SBOA046](#) demonstrates the use of a REF102 as a current source and sink. The REF102 current source application can be expanded other series voltage references.

4 Summary

5 References

- Texas Instruments, [Implementation and Application of Current Sources and Current Receivers](#), application note.
- Texas Instruments, [Tips and tricks for designing with voltage references](#), e-book.
- Texas Instruments, [High-side current sources for industrial applications](#), analog design journal.

6 Revision History

Changes from Revision * (June 2020) to Revision A (April 2026)	Page
• Updated the numbering format for tables, figures and cross-references throughout the document.....	2
• Updated Current Sourcing with the LM4041-N ADJ figure and removed redundant line items.....	6
• Added <i>Summary</i> section.....	7

IMPORTANT NOTICE AND DISCLAIMER

TI PROVIDES TECHNICAL AND RELIABILITY DATA (INCLUDING DATASHEETS), DESIGN RESOURCES (INCLUDING REFERENCE DESIGNS), APPLICATION OR OTHER DESIGN ADVICE, WEB TOOLS, SAFETY INFORMATION, AND OTHER RESOURCES "AS IS" AND WITH ALL FAULTS, AND DISCLAIMS ALL WARRANTIES, EXPRESS AND IMPLIED, INCLUDING WITHOUT LIMITATION ANY IMPLIED WARRANTIES OF MERCHANTABILITY, FITNESS FOR A PARTICULAR PURPOSE OR NON-INFRINGEMENT OF THIRD PARTY INTELLECTUAL PROPERTY RIGHTS.

These resources are intended for skilled developers designing with TI products. You are solely responsible for (1) selecting the appropriate TI products for your application, (2) designing, validating and testing your application, and (3) ensuring your application meets applicable standards, and any other safety, security, regulatory or other requirements.

These resources are subject to change without notice. TI grants you permission to use these resources only for development of an application that uses the TI products described in the resource. Other reproduction and display of these resources is prohibited. No license is granted to any other TI intellectual property right or to any third party intellectual property right. TI disclaims responsibility for, and you fully indemnify TI and its representatives against any claims, damages, costs, losses, and liabilities arising out of your use of these resources.

TI's products are provided subject to [TI's Terms of Sale](#), [TI's General Quality Guidelines](#), or other applicable terms available either on [ti.com](#) or provided in conjunction with such TI products. TI's provision of these resources does not expand or otherwise alter TI's applicable warranties or warranty disclaimers for TI products. Unless TI explicitly designates a product as custom or customer-specified, TI products are standard, catalog, general purpose devices.

TI objects to and rejects any additional or different terms you may propose.

Copyright © 2026, Texas Instruments Incorporated

Last updated 10/2025