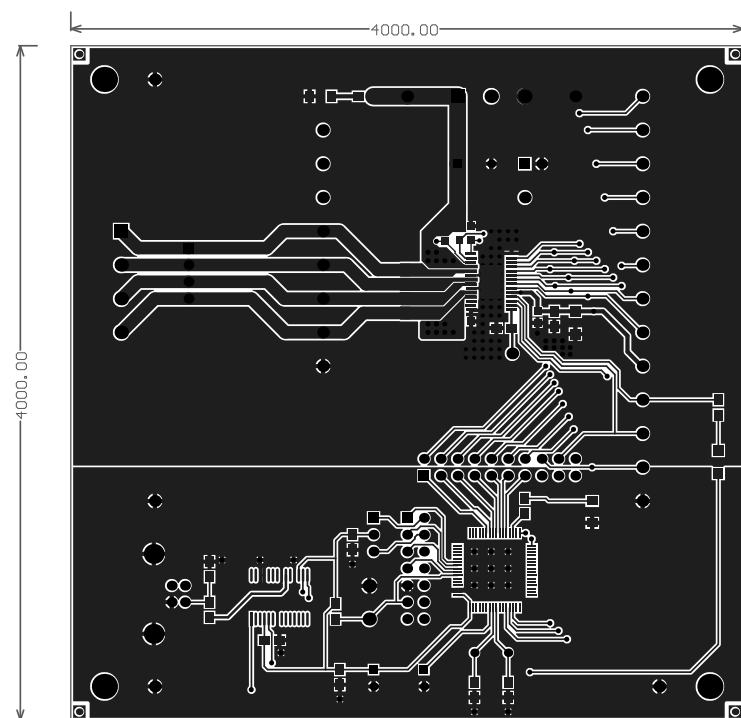
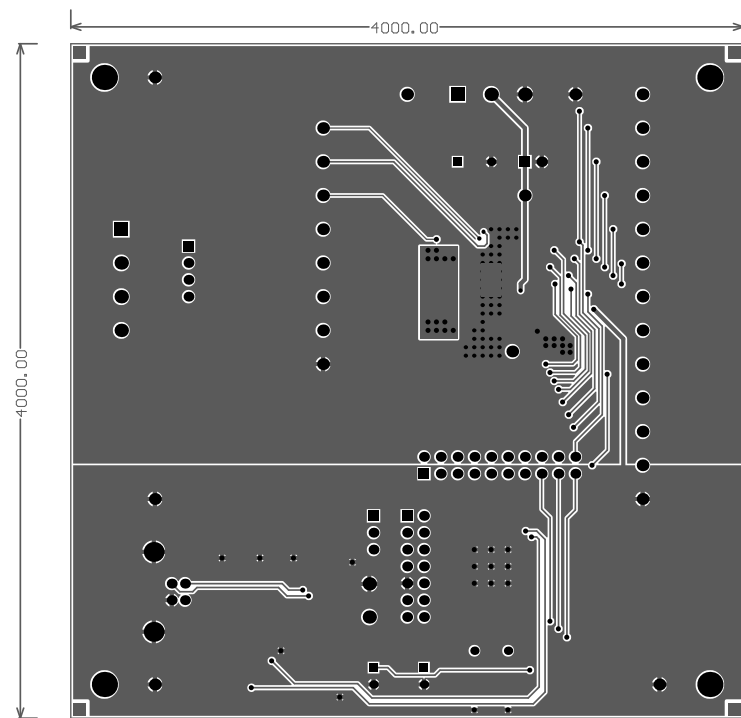


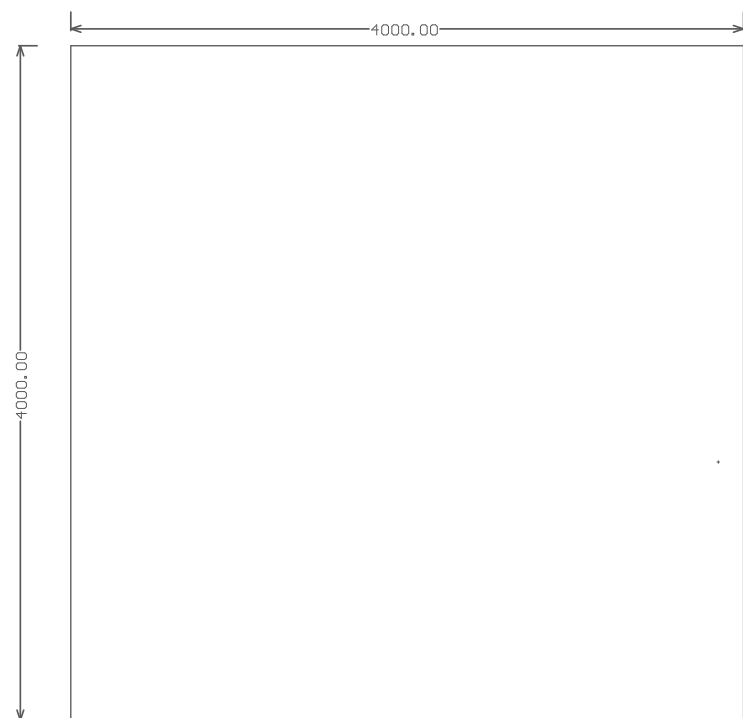
Top Layer

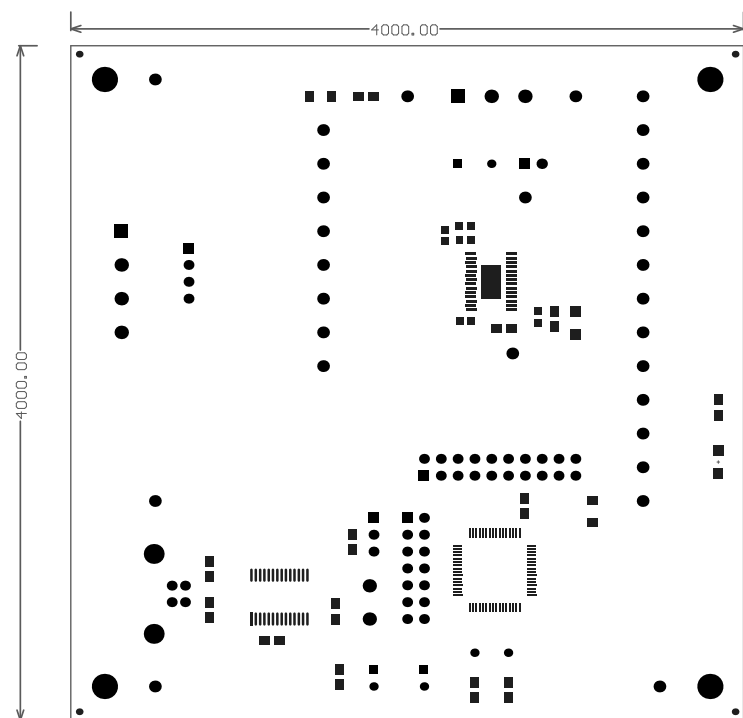


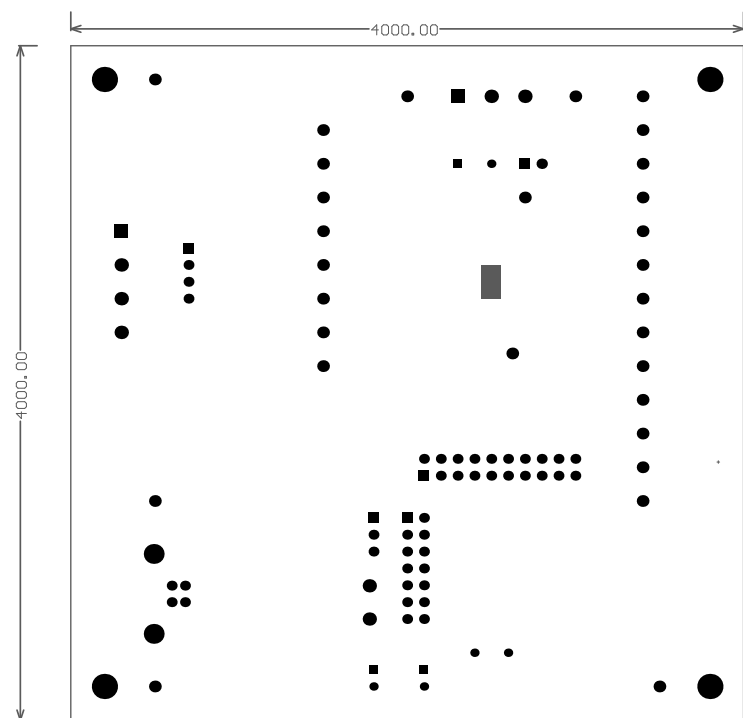
BottomLayer

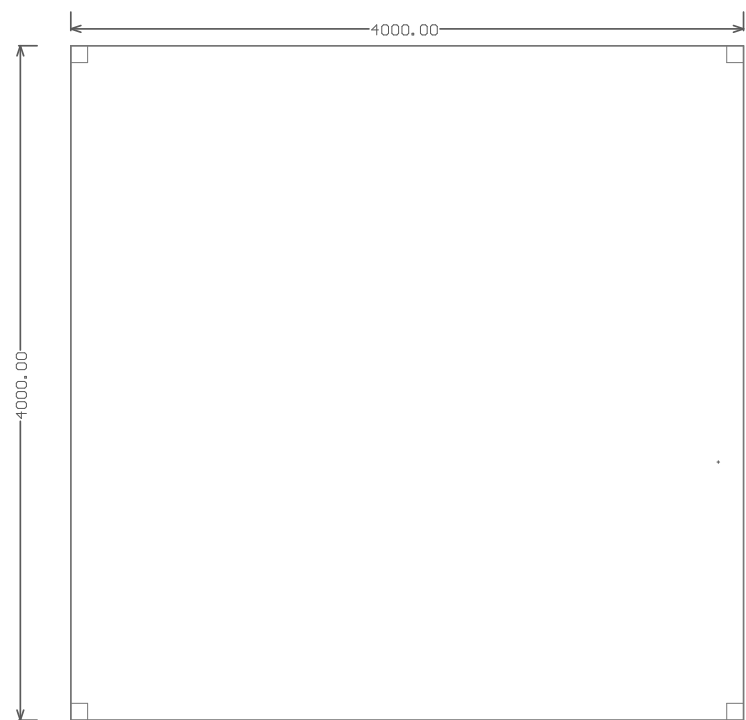


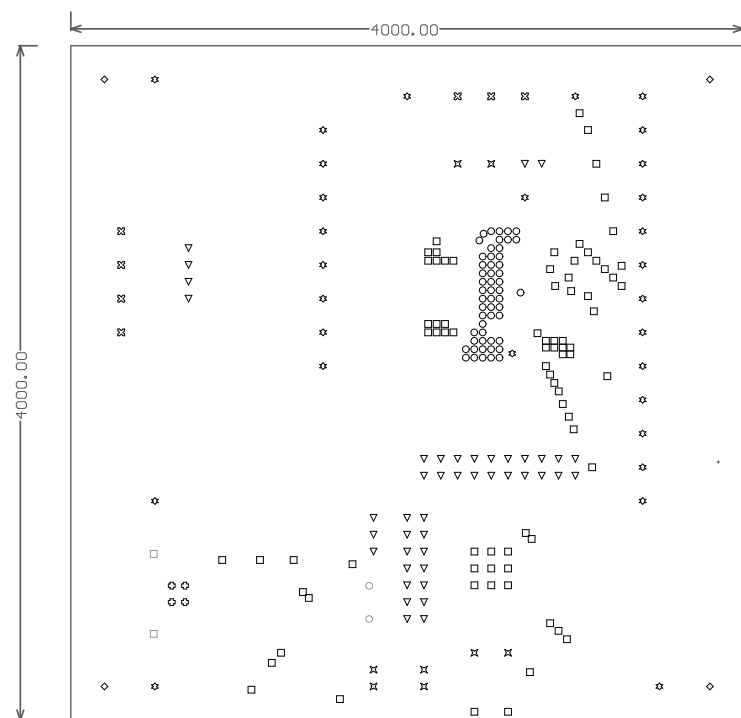












Notes:

1. NUMBER OF FINISHED LAYERS: 4
2. BOARD MATERIAL AND CONSTRUCTION TO BE UL  
APPROVED AND MARKED ON THE FINISHED BOARD.
3. LAMINATE MATERIAL: COPPER-CLAD FR-4
4. COPPER WEIGHT: 1oz FINISHED
5. FINISHED THICKNESS: .062 +/- .010
6. MIN PLATING THICKNESS IN THROUGH HOLES: .001"
7. ENIG Finish
8. LPI SOLDERMASK BOTH SIDES USING APPROPRIATE  
LAYER ARTWORK: COLOR = GREEN
9. LPI SILKSCREEN AS REQUIRED: COLOR - WHITE
10. VENDOR INFORMATION TO BE INCORPORATED  
ON BACK SIDE WHENEVER POSSIBLE
11. MINIMUM COPPER CONDUCTOR WIDTH IS: 8 MILS
12. MINIMUM CONDUCTOR SPACING IS: 8 MILS

Symbol	Hit Count	Tool Size	Plated	Hole Type
○	53	12mil (0.3048mm)	PTH	Round
□	80	16mil (0.4064mm)	PTH	Round
×	8	28mil (0.7112mm)	PTH	Round
▽	43	35mil (0.889mm)	PTH	Round
◇	4	36.614mil (0.93mm)	PTH	Round
○	2	39.37mil (1mm)	PTH	Round
⊗	7	45mil (1.143mm)	PTH	Round
✱	29	52mil (1.3208mm)	PTH	Round
□	2	90.551mil (2.3mm)	PTH	Round
◇	4	120mil (3.048mm)	PTH	Round
232 Total				

Drill Drawing.



