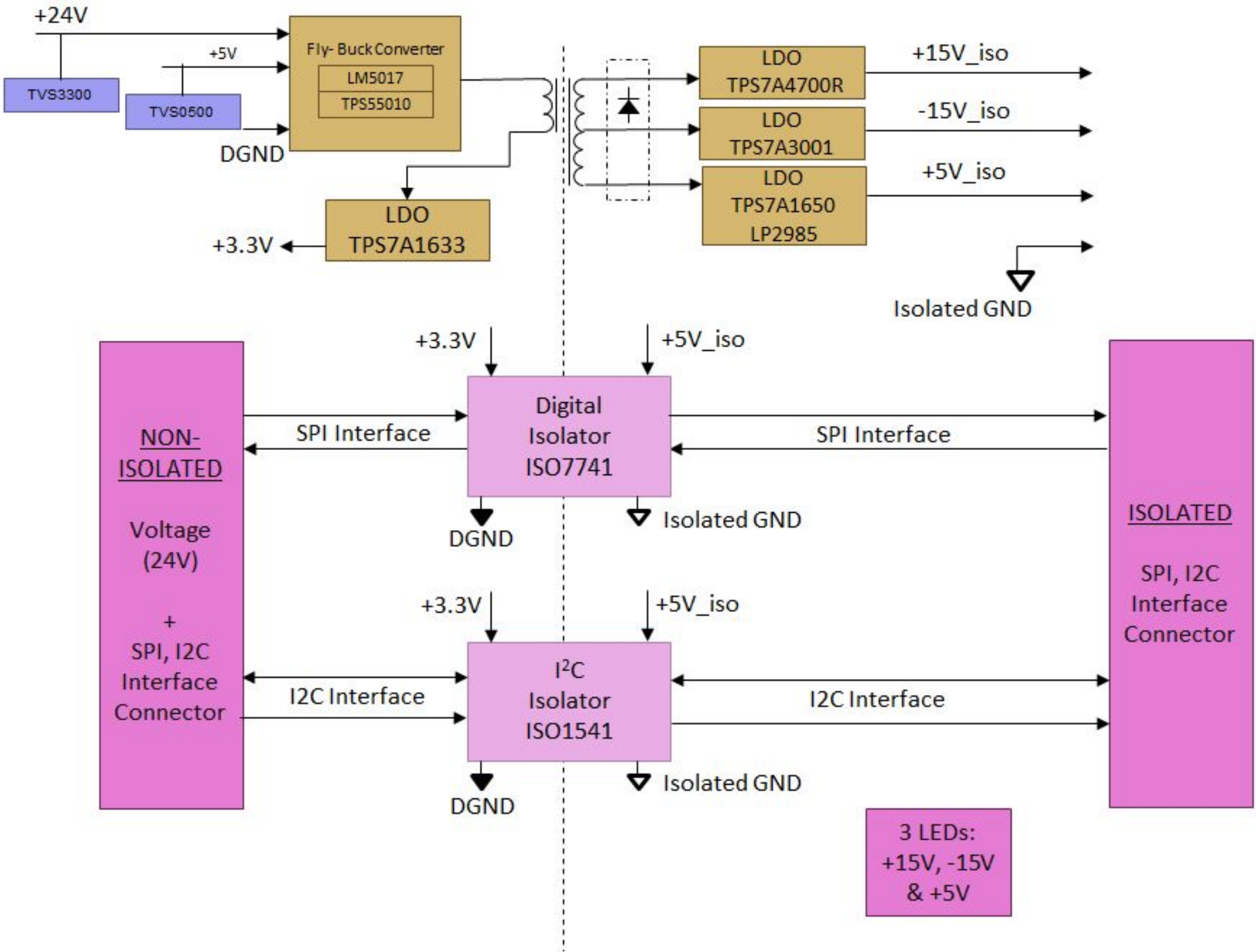

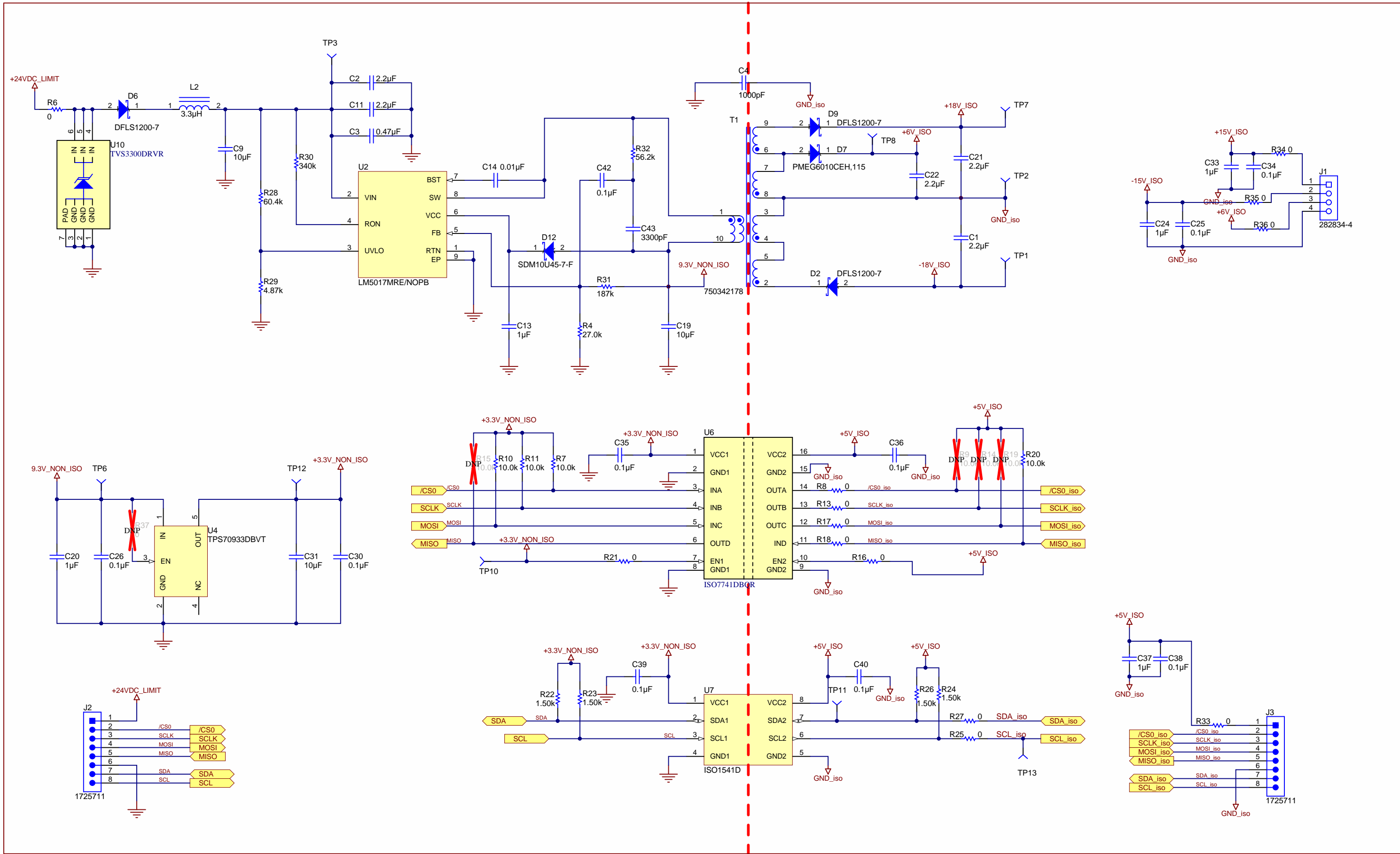


1		2		3		4		5		6	
										Revision History	
Rev	ECN #	Approved Date		Approved by		Notes					
N/A	N/A	N/A		N/A		N/A					
Page 2 Block Diagram											
Page 3 Isolated SPI & I2C, Isolated Fly buck Power Supply for +18V_ISO, -18V_ISO, +6V_ISO and 3.3V_NON_ISO											
Page 4 Isolated Power Supply_+15V_iso,-15V_iso & +5V_iso											
Page 5 Power stage											
Texas Instruments and/or its licensors do not warrant the accuracy or completeness of this specification or any information contained therein. Texas Instruments and/or its licensors do not warrant that this design will meet the specifications, will be suitable for your application or fit for any particular purpose, or will operate in an implementation. Texas Instruments and/or its licensors do not warrant that the design is production worthy. You should completely validate and test your design implementation to confirm the system functionality for your application.											
				Orderable: NA TID #: 00300 Number: TIDA-00300 Rev: E3 SVN Rev: Not in version control Drawn By: Sreenivasa Engineer: Sreenivasa				Designed for: Public Release Mod. Date: 4/8/2019 Project Title: Isolated Power Supply and Communication Interface Sheet Title: Coversheet Assembly Variant: 001 File: TIDA-00300_CoverSheet_Pg1.SchDoc Size: B Contact: http://www.ti.com/support			
								TEXAS INSTRUMENTS http://www.ti.com			
								© Texas Instruments 2019			
1		2		3		4		5		6	



Texas Instruments and/or its licensors do not warrant the accuracy or completeness of this specification or any information contained therein. Texas Instruments and/or its licensors do not warrant that this design will meet the specifications, will be suitable for your application or fit for any particular purpose, or will operate in an implementation. Texas Instruments and/or its licensors do not warrant that the design is production worthy. You should completely validate and test your design implementation to confirm the system functionality for your application.

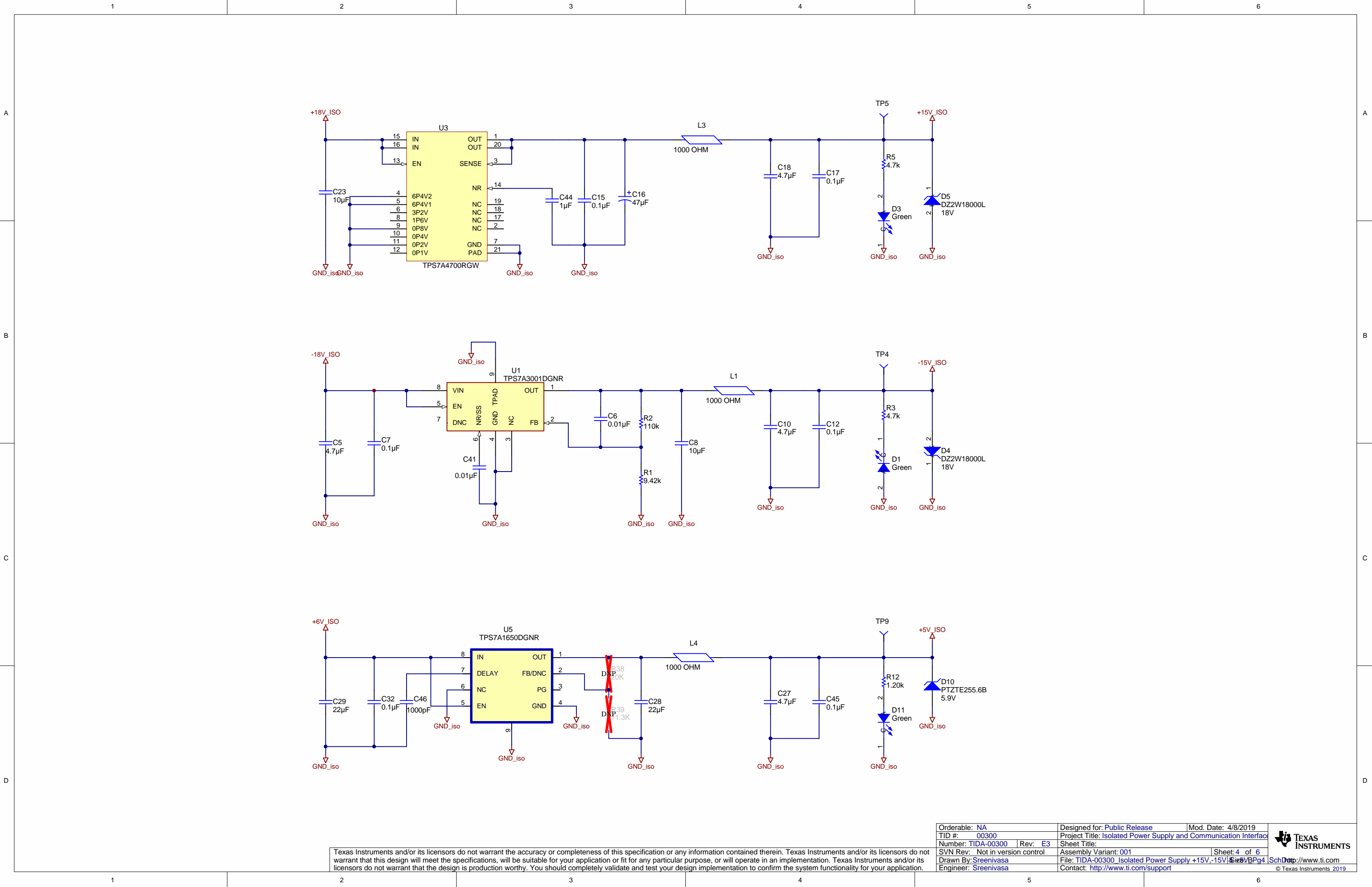
Orderable: NA	Designed for: Public Release	Mod. Date: 4/8/2019	 TEXAS INSTRUMENTS http://www.ti.com © Texas Instruments 2019
TID #: 00300	Project Title: Isolated Power Supply and Communication Interface	Sheet: 2 of 6	
Number: TIDA-00300	Rev: E3	File: TIDA-00300_Block Diagram_Pg2.SchDoc	
SVN Rev: Not in version control	Assembly Variant: 001	Size: B	
Drawn By: Sreenivasa	Engineer: Sreenivasa	Contact: http://www.ti.com/support	



Texas Instruments and/or its licensors do not warrant the accuracy or completeness of this specification or any information contained therein. Texas Instruments and/or its licensors do not warrant that this design will meet the specifications, will be suitable for your application or fit for any particular purpose, or will operate in an implementation. Texas Instruments and/or its licensors do not warrant that the design is production worthy. You should completely validate and test your design implementation to confirm the system functionality for your application.

Orderable: NA	Designed for: Public Release	Mod. Date: 4/8/2019
TID #: 00300	Project Title: Isolated Power Supply and Communication Interface	
Number: TIDA-00300	Rev: E3	Sheet Title:
SVN Rev: Not in version control	Assembly Variant: 001	Sheet: 3 of 6
Drawn By: Sreenivasa	File: TIDA-00300_Isolated SPI, I2C & Fly buck Power Supply	Sheet: 3 of 6
Engineer: Sreenivasa	Contact: http://www.ti.com/support	© Texas Instruments 2019

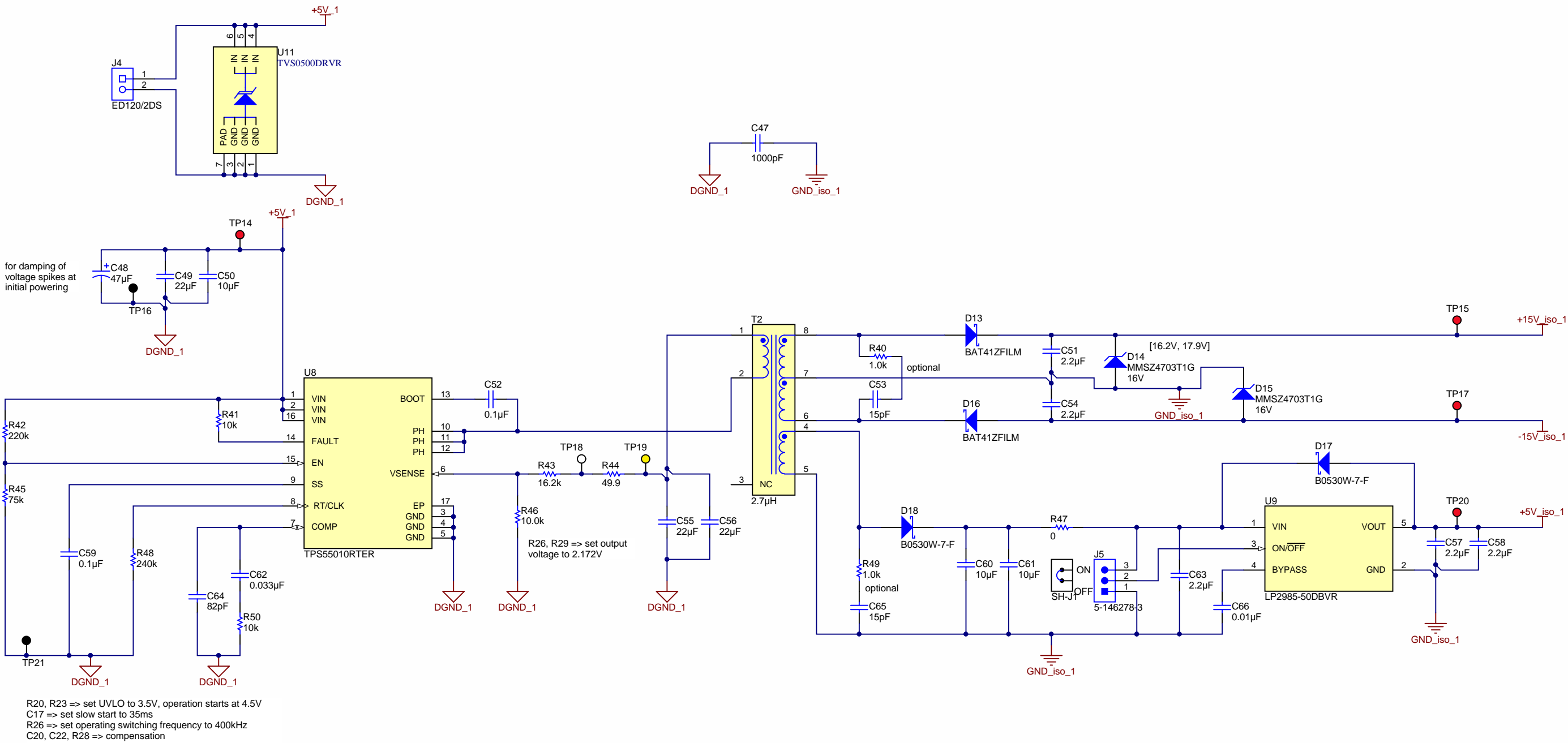


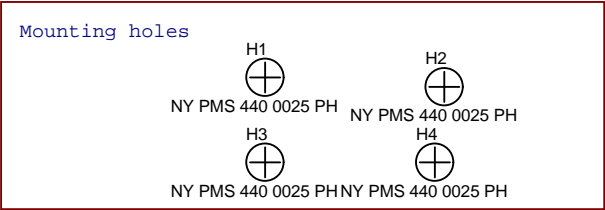
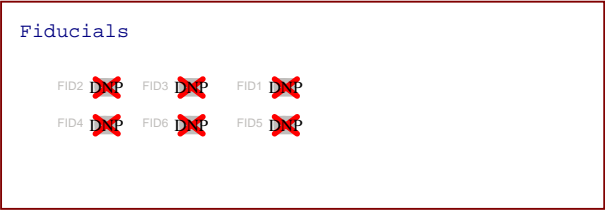


Texas Instruments and/or its licensors do not warrant the accuracy or completeness of this specification or any information contained therein. Texas Instruments and/or its licensors do not warrant that this design will meet the specifications, will be suitable for your application or fit for any particular purpose, or will operate in an implementation. Texas Instruments and/or its licensors do not warrant that the design is production worthy. You should completely validate and test your design implementation to confirm the system functionality for your application.

Orderable: NA	Designed for: Public Release	Mod. Date: 4/8/2019
TID #: 00300	Project Title: Isolated Power Supply and Communication Interface	
Number: TIDA-00300	Rev: E3	Sheet Title:
SVN Rev: Not in version control	Assembly Variant: 001	Sheet: 4 of 6
Drawn By: Sreenivasa	File: TIDA-00300_Isolated Power Supply +15V,-15V,5V,BP.g4	SchDoc: //www.ti.com
Engineer: Sreenivasa	Contact: http://www.ti.com/support	







PCB Number: TIDA-00300
PCB Rev: E3

PCB
LOGO

PCB
LOGO

Logo3
PCB
LOGO
WEEE logo

PCB
LOGO
Logo4

LBL1
PCB Label
Size: 0.65" x 0.20 "

ZZ1
Label Assembly Note
This Assembly Note is for PCB labels only

ZZ2
Assembly Note
These assemblies are ESD sensitive, ESD precautions shall be observed.

ZZ3
Assembly Note
These assemblies must be clean and free from flux and all contaminants. Use of no clean flux is not acceptable.

ZZ4
Assembly Note
These assemblies must comply with workmanship standards IPC-A-610 Class 2, unless otherwise specified.

Orderable: NA		Designed for: Public Release		Mod. Date: 4/8/2019	
TID #: 00300		Project Title: Isolated Power Supply and Communication Interface			
Number: TIDA-00300		Rev: E3		Sheet Title: Hardware	
SVN Rev: Not in version control		Assembly Variant: 001		Sheet: 6 of 6	
Drawn By: Sreenivasa		File: TIDA-00300_EVM_Hardware_Pg6.SchDoc		Size: B	
Engineer: Sreenivasa		Contact: http://www.ti.com/support			

1

2

3

4

5

6