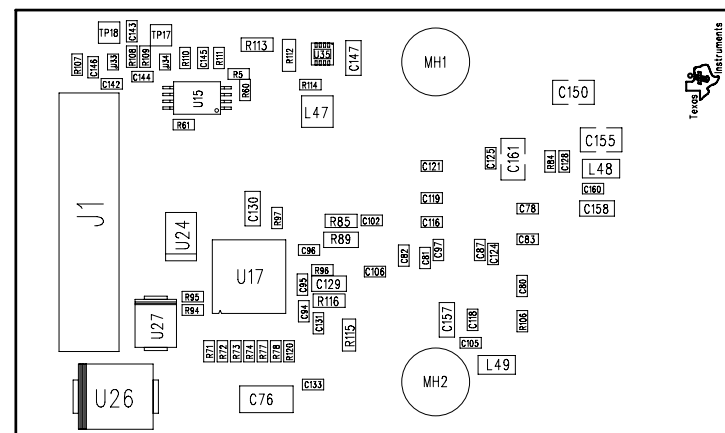


Notes:

- 1) Refer to BOM for stuffing options.
- 2) Observe polarity on diodes and capacitors.

REVISIONS				
	REV.	DESCRIPTION	DATE	APPROVED



Primary Side

APPLICATION		CONTRACT NO.	DWN: www.WSTScorp.com	9/14	TEXAS INSTRUMENTS									
USED ON	NEXT ASSY.		CHK:											
		UNLESS OTHERWISE SPECIFIED  1. TOLERANCES: LINEAR =     : 0.26 (.010) ANGULAR =    : 0.50 °  2. ALL DIMENSIONS ARE IN MM (INCHES).  3. INTERPRET DRAWING IN ACCORDANCE WITH DOD-STD-100.	P.E.:		TITLE:  ASSEMBLY DRAWING,  TIDEP0059									
			DES.ENG.:											
			P.C.:											
			Q.C.:											
			C.M.:											
			REL:											
			MFG:											
MATERIAL: SEE NOTE FINISH: SEE NOTE			ENG.MGR:							SIZE	CAGE CODE NO.	DRAWING NO.		REV:
			OTHER:							C				3
			OTHER:							SCALE: 1:1				
		OTHER:												
DO NOT SCALE DRAWING														