

## High-voltage battery monitor circuit: $\pm 20\text{V}$ , 0–10kHz, 18-bit fully differential

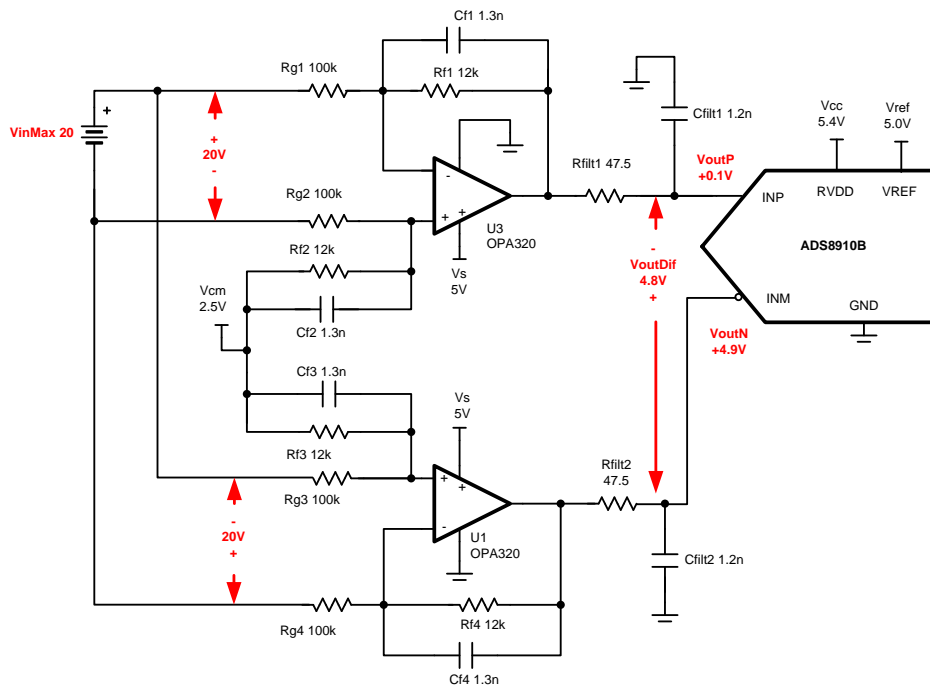
Bryan McKay, Arthur Kay

Input	ADC Input	Digital Output ADS8910
VinMin = -20V	VoutDif = 4.8V, VoutP = 4.9V, VoutN = 0.1V	1EB85 <sub>H</sub> or 125829 <sub>10</sub>
VinMax = 20V	VoutDif = -4.8V, VoutP = 0.1V, VoutN = 4.9V	2147B <sub>H</sub> or -125829 <sub>10</sub>
Power Supplies		
Vcc	Vee	Vref
5.3 V	0 V	5 V
		Vcm
		2.5 V

### Design Description

This design translates an input bipolar signal of  $\pm 20\text{V}$  into a fully differential ADC differential input scale of  $\pm 4.8\text{V}$ , which is within the output linear operation of amplifiers. The values in the *component selection* section can be adjusted to allow for different input voltage levels.

This circuit implementation is applicable in accurate voltage measurement applications such as Battery Maintenance Systems, Battery Analyzers, *Battery Testing Equipment*, *ATE*, and Remote Radio Units (RRU) in wireless base stations.



Copyright © 2017, Texas Instruments Incorporated

## Specifications

Specification	Calculated	Simulated	Measured
Transient ADC Input Settling	< 0.5LSB or 19 $\mu$ V	6.6 $\mu$ V	N/A
Noise	20.7 $\mu$ V rms	20.65 $\mu$ V rms	30.8 $\mu$ V rms
Bandwidth	10.2kHz	10.4kHz	10.4kHz

## Design Notes

1. Determine the linear range of the op amp based on common mode, output swing, and linear open-loop gain specification. This is covered in the *component selection* section.
2. For capacitors in the signal path, select COG type to minimize distortion. In this circuit Cf1, Cf2, Cf3, Cf4, Cfilt1, and Cfilt2 need to be COG type.
3. Use 0.1% 20ppm/ $^{\circ}$ C film resistors or better for good gain drift and to minimize distortion.
4. Precision labs video series covers methods for error analysis. Review the [Statistics Behind Error Analysis](#) for methods to minimize gain, offset, drift, and noise errors.
5. The [TI Precision Labs – ADCs](#) training video series covers methods for selecting the charge bucket circuit  $R_{\text{filt}}$  and  $C_{\text{filt}}$ . These component values are dependent on the amplifier bandwidth, data converter sampling rate, and data converter design. The values shown here will give good settling and AC performance for the amplifier, gain settings, and data converter in this example. If the design is modified, select a different RC filter. Refer to [Introduction to SAR ADC Front-End Component Selection](#) for an explanation of how to select the RC filter for best settling and AC performance.

### Component Selection

1. The general equation for this circuit.

$$V_{\text{outMinOpa}} = \frac{V_{\text{outDifMin}}}{2} + V_{\text{cm}}$$

$$V_{\text{outMaxOpa}} = \frac{V_{\text{outDifMax}}}{2} + V_{\text{cm}}$$

$$V_{\text{outDif}} = V_{\text{inDif}} \times \text{Gain}_{\text{dif}}$$

$$\text{Gain}_{\text{dif}} = 2 \times \frac{R_f}{R_g}$$

2. Find op amp maximum and minimum output for linear operation.

$$-0.1 \text{ V} < V_{\text{cm}} < 5.1 \text{ V} \quad \text{from OPA320 } V_{\text{cm}} \text{ specification}$$

$$0.035 \text{ V} < V_{\text{out}} < 4.965 \text{ V} \quad \text{from OPA320 } V_{\text{out}} \text{ swing specification}$$

$$0.1 \text{ V} < V_{\text{out}} < 4.9 \text{ V} \quad \text{from OPA320 } A_{\text{ol}} \text{ specification for linear operation}$$

$$0.1 \text{ V} < V_{\text{out}} < 4.9 \text{ V} \quad \text{Combined worst case}$$

3. Rearrange the equation from part 1 and solve for  $V_{\text{outDifMin}}$  and  $V_{\text{outDifMax}}$ . Find maximum and minimum differential output voltage based on combined worst case from step 2.

$$V_{\text{outDifMax}} = 2 \cdot V_{\text{outMaxOpa}} - 2 \cdot V_{\text{cm}} = 2 \cdot (4.9 \text{ V}) - 2 \cdot (2.5 \text{ V}) = 4.8 \text{ V}$$

$$V_{\text{outDifMin}} = 2 \cdot V_{\text{outMinOpa}} - 2 \cdot V_{\text{cm}} = 2 \cdot (0.1 \text{ V}) - 2 \cdot (2.5 \text{ V}) = -4.8 \text{ V}$$

4. Find differential gain based on results from step 3.

$$\text{Gain} = \frac{V_{\text{outDifMax}} - V_{\text{outDifMin}}}{V_{\text{inDifMax}} - V_{\text{inDifMin}}} = \frac{(4.8 \text{ V}) - (-4.8 \text{ V})}{(20 \text{ V}) - (-20 \text{ V})} = 0.24$$

5. Find standard resistor values for differential gain. Use [Analog Engineer's Calculator](#) ("Amplifier and Comparator\Find Amplifier Gain" section) to find standard values for  $R_f/R_g$  ratio.

$$\frac{\text{Gain}_{\text{dif}}}{2} = \frac{R_f}{R_g} = \frac{0.24}{2} = 0.12$$

$$\frac{R_f}{R_g} = 0.12 = \frac{12 \text{ k}\Omega}{100 \text{ k}\Omega} = 0.12$$

6. Find  $C_f$  for cutoff frequency.

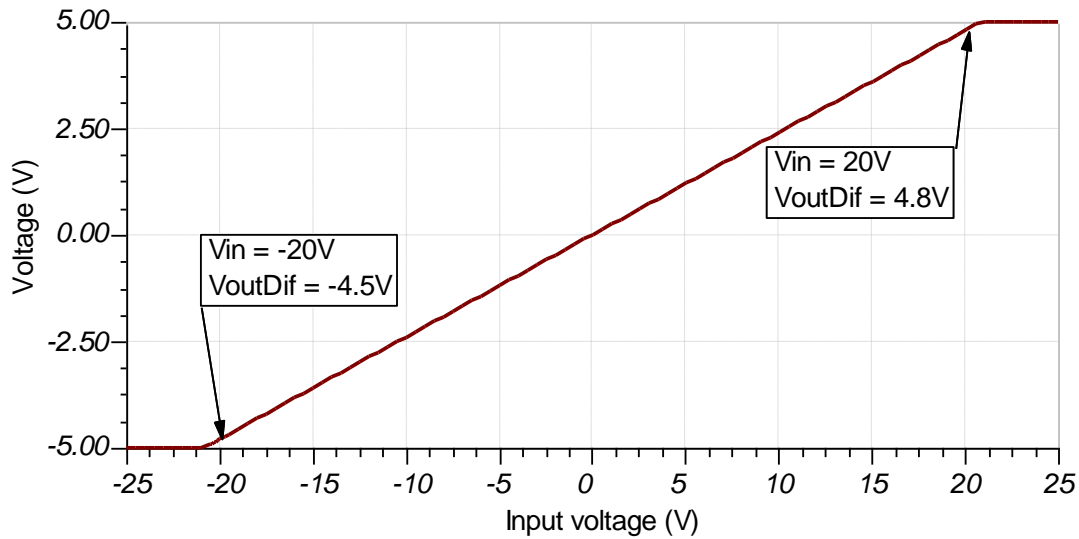
$$f = \frac{1}{2 \cdot \pi \cdot C_f \cdot R_f} = \frac{1}{2 \cdot \pi \cdot (1.3 \text{ nF}) \cdot (12 \text{ k}\Omega)} = 10.2 \text{ kHz}$$

$$C_f = \frac{1}{2 \cdot \pi \cdot f_c \cdot R_f} = \frac{1}{2 \cdot \pi \cdot (10 \text{ kHz}) \cdot (12 \text{ k}\Omega)} = 1.326 \text{ nF} \quad \text{or } 1.3 \text{ nF for standard value}$$

$$f = \frac{1}{2 \cdot \pi \cdot C_f \cdot R_f} = \frac{1}{2 \cdot \pi \cdot (1.3 \text{ nF}) \cdot (12 \text{ k}\Omega)} = 10.2 \text{ kHz}$$

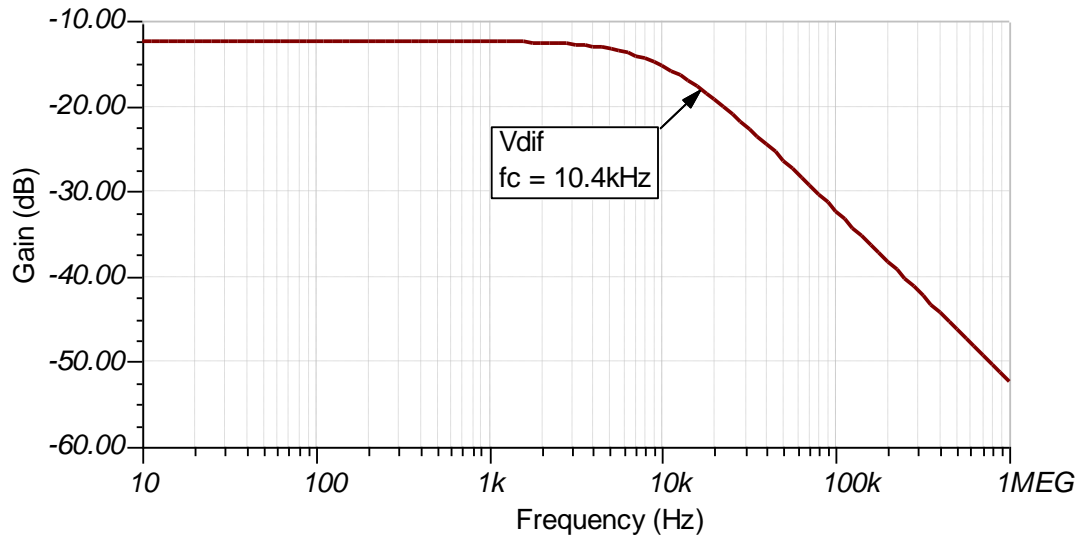
### DC Transfer Characteristics

The following graph shows a linear output response for inputs from  $-20\text{V}$  to  $+20\text{V}$ . Refer to [Determining a SAR ADC's Linear Range when using Operational Amplifiers](#) for detailed theory on this subject.



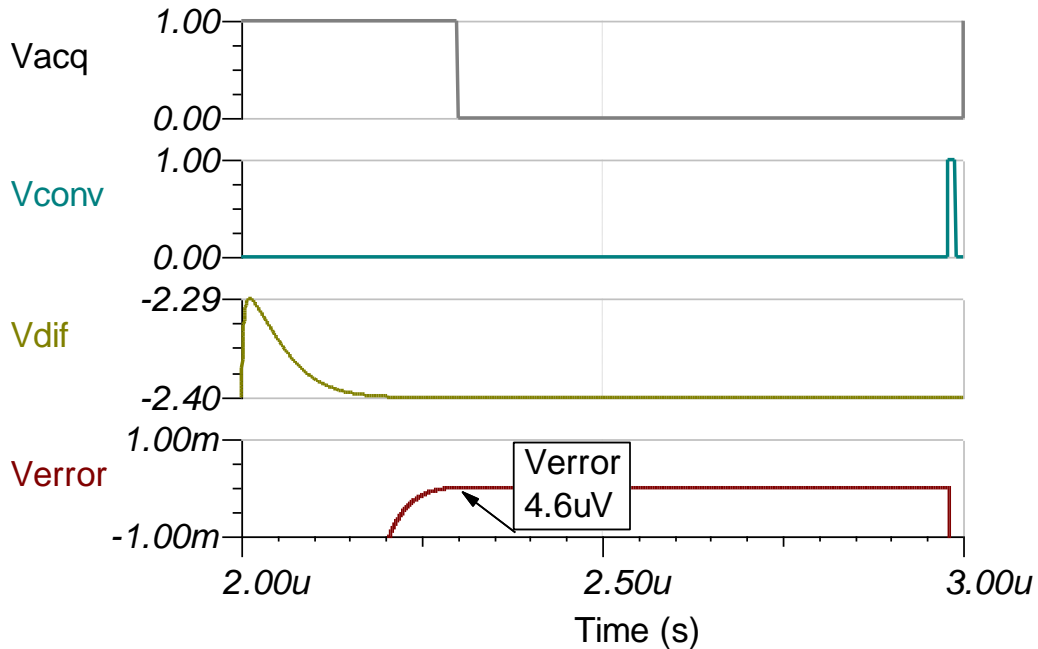
### AC Transfer Characteristics

The bandwidth is simulated to be  $10.4\text{ kHz}$ , and the gain is  $-12.4\text{ dB}$  which is a linear gain of  $0.12$ . See [Op Amps: Bandwidth 1](#) for more details on this subject.



### Transient ADC Input Settling Simulation

The following simulation shows settling to a -20V dc input signal. This type of simulation shows that the sample and hold kickback circuit is properly selected. Refer to [Introduction to SAR ADC Front-End Component Selection](#) for detailed theory on this subject.



### Noise Simulation

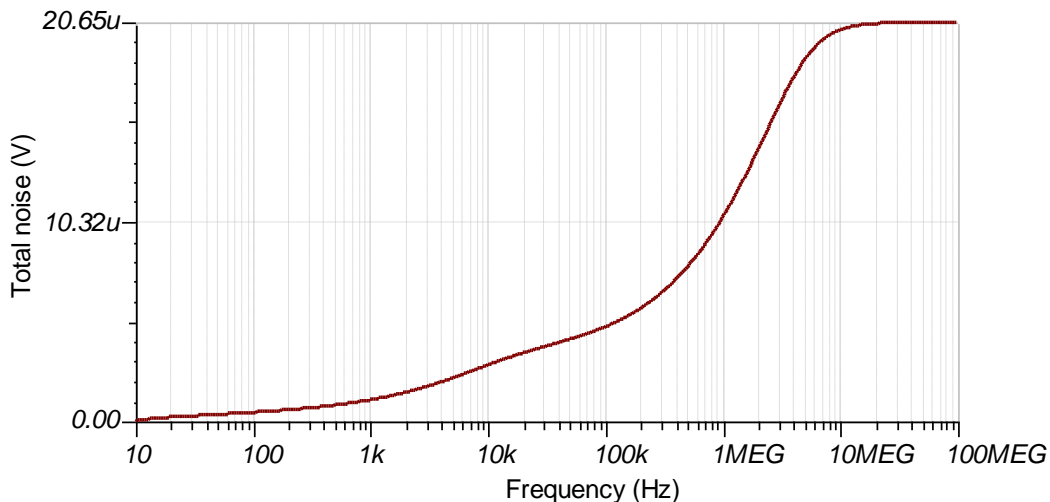
The following simplified noise calculation is provided for a rough estimate. We neglect resistor noise in this calculation as it is attenuated for frequencies greater than 10kHz.

$$f_c = \frac{1}{2 \cdot \pi \cdot R_{fit} \cdot C_{fit}} = \frac{1}{2 \cdot \pi \cdot (47.5\Omega) \cdot (1.2nF)} = 2.8MHz$$

$$E_{n\_se} = e_{n320} \cdot \sqrt{K_n \cdot f_c} = (7nV / \sqrt{Hz}) \cdot \sqrt{(1.57) \cdot (2.8MHz)} = 14.7\mu V_{rms} \text{ for a single ended input}$$

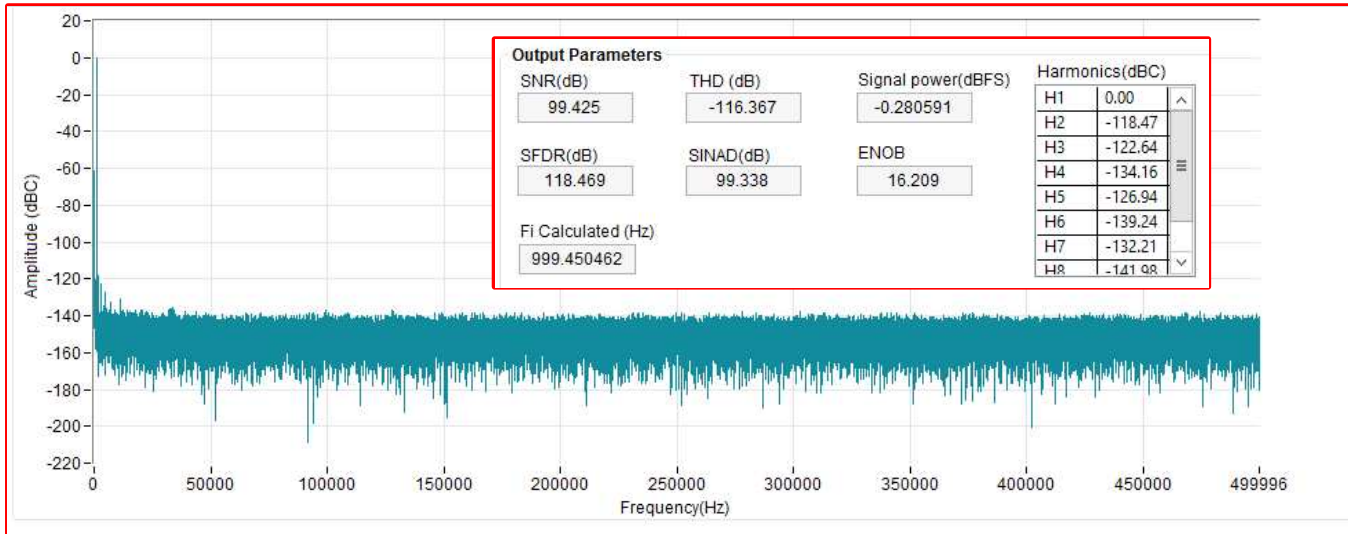
$$E_{n\_tot} = \sqrt{E_{n\_se}^2 + E_{n\_se}^2} = \sqrt{(14.7\mu V)^2 + (14.7\mu V)^2} = 20.7\mu V \text{ rms Total noise for differential amplifier}$$

Note that calculated and simulated match well. Refer to [Calculating the Total Noise for ADC Systems](#) for detailed theory on this subject.



## Measure FFT

This performance was measured on a modified version of the ADS8910BEVM. The AC performance indicates SNR = 99.4dB, and THD = -116.4dB. See [Introduction to Frequency Domain](#) for more details on this subject.

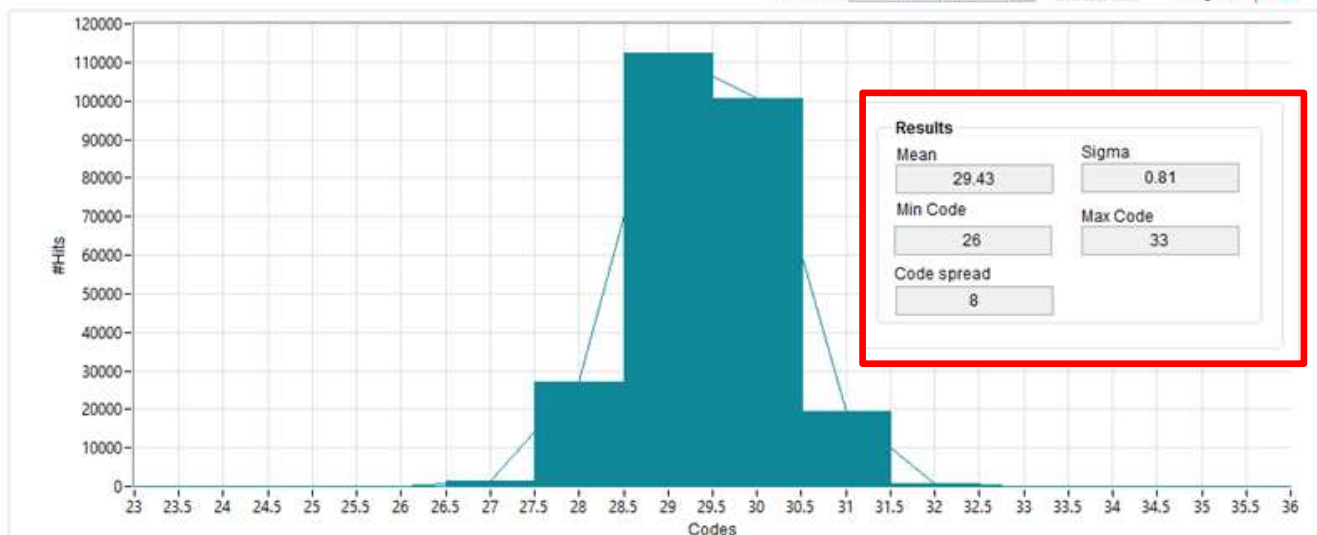


## Noise Measurement

The following measured result is for both inputs connected to ground. The histogram shows the system offset and noise. The standard deviation in codes is given by the EVM GUI (0.81), and this can be used to calculate the RMS noise (30.9µV rms) as shown in the following equation.

$$LSB = \frac{FSR}{2^N} = \frac{10 \text{ V}}{2^{18}} = 38.14 \mu\text{V}$$

$$E_{n\_measured} = E_{n\_Sigma} \cdot LSB = (0.81) \cdot (38.14 \mu\text{V}) = 30.9 \mu\text{Vrms}$$



## Design Featured Devices

Device	Key Features	Link	Similar Devices
<a href="#">ADS8900B</a> <sup>(1)</sup>	18-bit resolution, 1-Msps sample rate, Integrated reference buffer, fully differential input, Vref input range 2.5V to 5V.	<a href="http://www.ti.com/product/ADS8900B">www.ti.com/product/ADS8900B</a>	<a href="http://www.ti.com/adcs">www.ti.com/adcs</a>
<a href="#">OPA320</a> <sup>(2)</sup>	20-MHz bandwidth, Rail-to-Rail with Zero Crossover Distortion, VosMax = 150 $\mu$ V, VosDriftMax = 5 $\mu$ V/ $^{\circ}$ C, en = 7nV/rtHz	<a href="http://www.ti.com/product/OPA320">www.ti.com/product/OPA320</a>	<a href="http://www.ti.com/opamp">www.ti.com/opamp</a>
<a href="#">REF5050</a> <sup>(3)</sup>	3 ppm/ $^{\circ}$ C drift, 0.05% initial accuracy, 4 $\mu$ Vpp/V noise	<a href="http://www.ti.com/product/REF5050">www.ti.com/product/REF5050</a>	<a href="http://www.ti.com/vref">www.ti.com/vref</a>

- <sup>(1)</sup> The REF5050 can be directly connected to the ADS8910B without any buffer because the ADS8910B has a built in internal reference buffer. Also, the REF5050 has the required low noise and drift for precision SAR ADC applications. The OPA320 is also commonly used in 1Msps SAR applications as it has sufficient bandwidth to settle to charge kickback transients from the ADC input sampling. Furthermore, the zero crossover distortion rail-to-rail input allows for linear swing across most of the ADC input range.
- <sup>(2)</sup> The REF5050 can be directly connected to the ADS8910B without any buffer because the ADS8910B has a built in internal reference buffer. Also, the REF5050 has the required low noise and drift for precision SAR ADC applications. The OPA320 is also commonly used in 1Msps SAR applications as it has sufficient bandwidth.
- <sup>(3)</sup> The REF5050 can be directly connected to the ADS8910B without any buffer because the ADS8910B has a built in internal reference buffer. Also, the REF5050 has the required low noise and drift for precision SAR ADC applications. The OPA320 is also commonly used in 1Msps SAR applications as it has sufficient bandwidth.

### Link to Key Files for High Voltage Battery Monitor

See [Analog Engineer's Circuit Cookbooks](#) for TI's comprehensive circuit library.

Design files for this circuit – <http://www.ti.com/lit/zip/sbac171>.

### Revision History

Revision	Date	Change
A	January 2019	Downstyle title, update title role content, added link to circuit cookbook library page.

## IMPORTANT NOTICE AND DISCLAIMER

TI PROVIDES TECHNICAL AND RELIABILITY DATA (INCLUDING DATASHEETS), DESIGN RESOURCES (INCLUDING REFERENCE DESIGNS), APPLICATION OR OTHER DESIGN ADVICE, WEB TOOLS, SAFETY INFORMATION, AND OTHER RESOURCES "AS IS" AND WITH ALL FAULTS, AND DISCLAIMS ALL WARRANTIES, EXPRESS AND IMPLIED, INCLUDING WITHOUT LIMITATION ANY IMPLIED WARRANTIES OF MERCHANTABILITY, FITNESS FOR A PARTICULAR PURPOSE OR NON-INFRINGEMENT OF THIRD PARTY INTELLECTUAL PROPERTY RIGHTS.

These resources are intended for skilled developers designing with TI products. You are solely responsible for (1) selecting the appropriate TI products for your application, (2) designing, validating and testing your application, and (3) ensuring your application meets applicable standards, and any other safety, security, or other requirements. These resources are subject to change without notice. TI grants you permission to use these resources only for development of an application that uses the TI products described in the resource. Other reproduction and display of these resources is prohibited. No license is granted to any other TI intellectual property right or to any third party intellectual property right. TI disclaims responsibility for, and you will fully indemnify TI and its representatives against, any claims, damages, costs, losses, and liabilities arising out of your use of these resources.

TI's products are provided subject to TI's Terms of Sale ([www.ti.com/legal/termsofsale.html](http://www.ti.com/legal/termsofsale.html)) or other applicable terms available either on [ti.com](http://ti.com) or provided in conjunction with such TI products. TI's provision of these resources does not expand or otherwise alter TI's applicable warranties or warranty disclaimers for TI products.

Mailing Address: Texas Instruments, Post Office Box 655303, Dallas, Texas 75265  
Copyright © 2019, Texas Instruments Incorporated