

# Absolute Angle Measurements for Rotational Motion Using Hall-Effect Sensors



Scott Bryson

Current and Position Sensing

Rotation-based devices such as dials, joysticks, thermostats, electronic steering assemblies, and motor-controlled joints typical to gimbals or robotic arms all rely on the ability to accurately define angular position. While there are means to monitor rotation angle using mechanical contacts, these types of sensors are prone to wear out with use and can suffer performance loss in cases where dirt and grime are present. Hall-effect sensors are a contactless sensing alternative which can offer longer product life, improved reliability, and higher performance for angle sensing.

In applications where angular rotation is present, feedback to a controller can provide valuable insight to the device configuration. This might be user input from a knob or steering wheel, or exact position control for motor-driven configurations. Implementing this solution using a Hall-effect sensor normally requires placing a magnet on the rotating body with a nearby sensor capable of detecting the magnetic flux density produced by the magnet. Monitoring angles with linear Hall-effect sensors can be most easily achieved when using a diametric cylinder magnet installed along the axis of rotation.

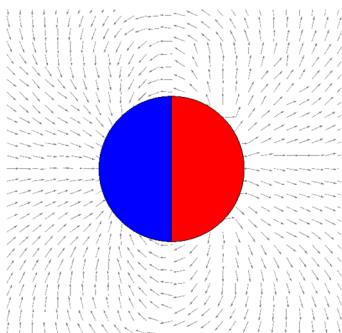


Figure 1. Diametric Magnet

As this type of magnet is rotated axially, the various components of field vectors (which are indicative of magnetic flux density) will vary cyclically. Depending on the position relative to the magnet, there will always be at least two components to select from. These components will be sinusoidal when the sensor is placed at an appropriate distance from the

surface of the magnet. Consider the following curves representing each component produced by a rotating magnet.

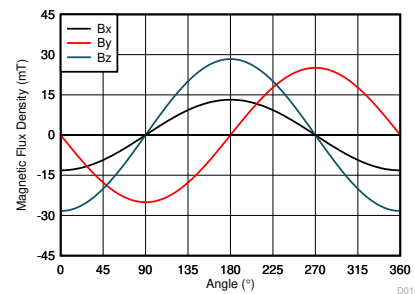


Figure 2. Magnetic Flux Density vs Magnet Angle

If a sensor element is oriented in the XZ plane, we would be able to monitor  $B_y$  which is the component of the vector directed in the Y direction. Using this input, it is possible to resolve up to  $180^\circ$  of rotation using the following relationship.

$$\text{Device Output} = a \sin(\theta) \tag{1}$$

Adding a second sensor  $90^\circ$  out of phase from the first enables expanding the absolute angle sensing solution to a full  $360^\circ$ .

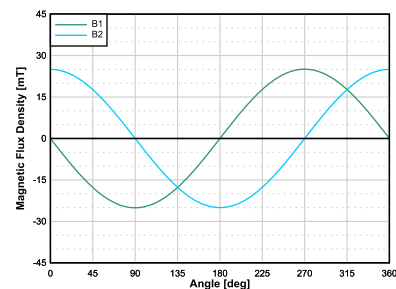


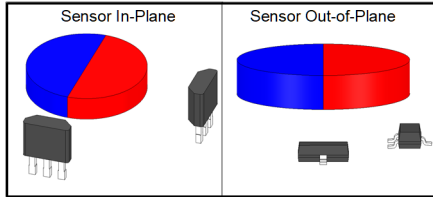
Figure 3. Field Components With  $90^\circ$  Phase Shift

When using two signals  $90^\circ$  out of phase, it is now possible to calculate angle using the arctangent function.

$$\theta = \text{atan}(B1/B2) \tag{2}$$

One method to set up an angle calculation is to use two one-dimensional sensors. For this method,

the two sensors must be placed such that they are physically spaced  $90^\circ$  about the center of the magnet. This can be done with the sensors either In-Plane (coplanar to the magnet polarization) or Out-of-Plane. The In-Plane approach places the sensors directly aligned with the magnet pole, and therefore the observed inputs will be larger, but the Out-of-Plane alignment requires less physical space.



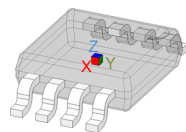
**Figure 4. Configurations for Angle Sense With One-Dimensional Hall-Effect Sensors**

A mechanical spacing of  $90^\circ$  guarantees the required phase shift at the output.

Since each device is monitoring the equivalent field components, this approach is easy to implement using a device such as [DRV5055](#), but this approach can have challenges related to sensitivity matching, mechanical alignment, and physical space.

Calibration can prove vital to achieving the highest level of precision when correcting for these errors.

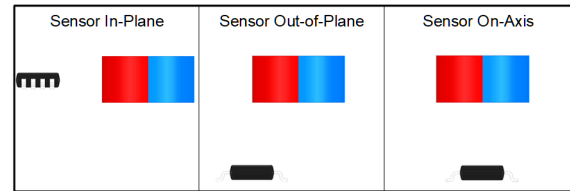
A second option is to implement the design using a 3D position sensor. Returning to the plot in [Figure 2](#), notice that the Y and Z components are naturally  $90^\circ$  out of phase. When using 3D position sensors, where more than one axis of sensitivity is available, it is possible to use a single device to simultaneously monitor each field component required for angle calculation.



**Figure 5. 3D Position Sensor**

Integrating multiple sensors in a single package has the benefit of more consistent channel to channel magnetic field sensitivity and minimizes the required PCB area needed for the sensors. This makes multi-axis sensors an attractive option when designing for this function. An additional feature for 3D position sensors is an integrated CORDIC calculator capable of replicating the results of the arctangent function and generating angular position directly from the output data of any two axes.

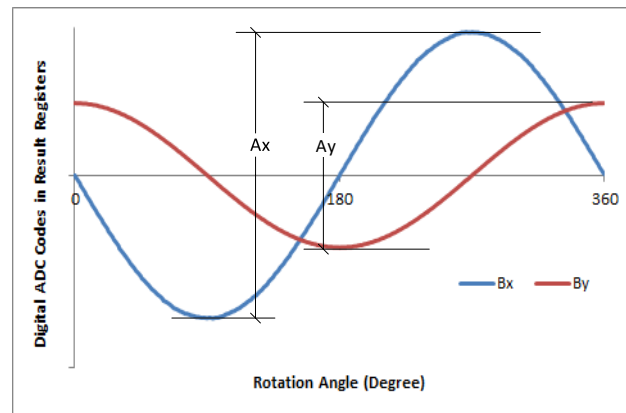
Generally, there are three different orientations possible for this measurement: On-Axis, In-Plane, and Out-of-Plane (Off-Axis).



**Figure 6. Configurations for Angle Sense With Multi-Axis Hall-Effect Sensors**

Of these three, the easiest to implement is On-Axis, where the field components will be naturally matched. An In-plane sensor placement can often be convenient, but there are only two measurable field components. Out-of-Plane essentially describes every other location. There will be measurable field in all three directions in various magnitudes and placement is flexible to the constraints of the design.

What should be considered, is that the input amplitudes of the magnetic field components are typically not equal in magnitude for most locations when using In-Plane or Out-of-Plane orientations.



**Figure 7. Unequal Magnetic Field Components.**

As a result, calculations using the arctangent will result in measurement error. This can be corrected for with careful placement to achieve matched inputs or by digitally scaling the outputs to match. This normalization function is built into devices such as [TMAG5170-Q1](#) and provides a great deal of design flexibility for all sensor placements, but could be achieved at the controller by implementing a scalar adjustment during calculations.

For more details and guides related to using linear Hall Effect sensors for absolute angle measurements with either one dimensional or 3D position sensors, see [Table 1](#) and [Table 2](#).

**Table 1. Alternate Device Recommendation**

Device	Characteristics	Design Considerations
<a href="#">DRV5055</a>	Single axis linear Hall-effect sensor with Analog output available in SOT-23 and TO-92 packages	Analog outputs are subject to electrical noise and calculations require MCU computations. This device provides the lowest cost solution. Full 360 monitoring requires two devices.
<a href="#">DRV5055-Q1</a>	Automotive grade single axis linear Hall-effect sensor with analog output available in SOT-23 and TO-92 packages	Similar to the commercial grade, but is guaranteed to operate over wider temperature range
<a href="#">DRV5057</a>	Single axis linear Hall-effect sensor with PWM output available in SOT-23 and TO-92 packages	PWM outputs require conversion, but are less susceptible to coupled noise. Full 360 monitoring requires two devices.
<a href="#">DRV5057-Q1</a>	Automotive grade single axis linear Hall-effect sensor with PWM output available in SOT-23 and TO-92 package	Similar to the commercial grade, but is guaranteed to operate over wider temperature range
<a href="#">TMAG5170-Q1</a>	Automotive grade linear 3D Hall-effect position sensor with SPI interface available in 8 pin DGK package	Is a single device solution capable of sensing all field components and integrates angle calculation and field normalization. This device operates over SPI.

**Table 2. Related Technical Resources**

Name	Description
<a href="#">DRV5055 Angle EVM</a>	A demonstration of angle measurement using one dimensional Hall-effect Sensors
<a href="#">TMAG5170 EVM</a>	GUI and attachments incorporate angle measurement using a three dimensional linear Hall-effect sensor
<a href="#">TMAG5170 2D Angle Error Calculator</a>	This tool helps evaluate expected errors that will come as a result of rotation speed, conversion settings, and device level errors.
<a href="#">SBAA463</a>	Angle Measurement With Multi-Axis Linear Hall-Effect Sensors Application Report
<a href="#">SLYA036</a>	Linear Hall-Effect Sensor Angle Measurement Theory, Implementation, and Calibration Application Report
<a href="#">TI Precision Labs - Magnetic Sensors</a>	A helpful video series describing the Hall Effect and how it is used in various applications

## **IMPORTANT NOTICE AND DISCLAIMER**

TI PROVIDES TECHNICAL AND RELIABILITY DATA (INCLUDING DATA SHEETS), DESIGN RESOURCES (INCLUDING REFERENCE DESIGNS), APPLICATION OR OTHER DESIGN ADVICE, WEB TOOLS, SAFETY INFORMATION, AND OTHER RESOURCES "AS IS" AND WITH ALL FAULTS, AND DISCLAIMS ALL WARRANTIES, EXPRESS AND IMPLIED, INCLUDING WITHOUT LIMITATION ANY IMPLIED WARRANTIES OF MERCHANTABILITY, FITNESS FOR A PARTICULAR PURPOSE OR NON-INFRINGEMENT OF THIRD PARTY INTELLECTUAL PROPERTY RIGHTS.

These resources are intended for skilled developers designing with TI products. You are solely responsible for (1) selecting the appropriate TI products for your application, (2) designing, validating and testing your application, and (3) ensuring your application meets applicable standards, and any other safety, security, regulatory or other requirements.

These resources are subject to change without notice. TI grants you permission to use these resources only for development of an application that uses the TI products described in the resource. Other reproduction and display of these resources is prohibited. No license is granted to any other TI intellectual property right or to any third party intellectual property right. TI disclaims responsibility for, and you will fully indemnify TI and its representatives against, any claims, damages, costs, losses, and liabilities arising out of your use of these resources.

TI's products are provided subject to [TI's Terms of Sale](#) or other applicable terms available either on [ti.com](http://ti.com) or provided in conjunction with such TI products. TI's provision of these resources does not expand or otherwise alter TI's applicable warranties or warranty disclaimers for TI products.

TI objects to and rejects any additional or different terms you may have proposed.

Mailing Address: Texas Instruments, Post Office Box 655303, Dallas, Texas 75265  
Copyright © 2022, Texas Instruments Incorporated