

AC coupled instrumentation amplifier circuit

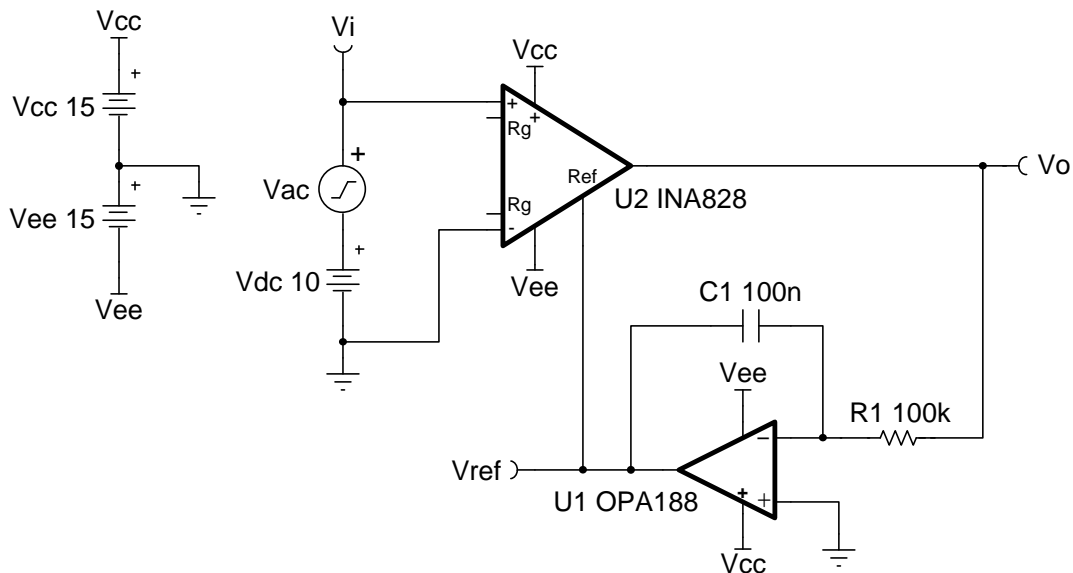
Design Goals

Input		Output		Supply	
V_{iMin}	V_{iMax}	V_{oMin}	V_{oMax}	V_{cc}	V_{ee}
-13V	13V	-14.85V	14.85	15	-15

Lower Cutoff Frequency (f_L)	Gain	Input
16Hz	1	$\pm 2V_{AC}$; +10VDC

Design Description

This circuit produces an AC-coupled output from a DC-coupled input to an instrumentation amplifier. The output is fed back through an integrator, and the output of the integrator is used to modulate the reference voltage of the amplifier. This creates a high-pass filter and effectively cancels the output offset. This circuit avoids the need for large capacitors and resistors on the input, which can significantly degrade CMRR due to component mismatch.



Design Notes

1. The DC correction from output to reference is unity-gain. U_1 can only correct for a signal within its input/output limitations, thus the magnitude of DC voltage that can be corrected for will degrade with increasing instrumentation amplifier gain. See the table in Design Steps for more information.
2. Large values of R_1 and C_1 will lower the cutoff frequency, but increase startup transient response time. Startup behavior can be observed in the Transient Simulation Results.
3. When AC-coupling this way, the total input voltage must remain within the common-mode input range of the instrumentation amplifier.

Design Steps

1. Set the lower cutoff frequency for circuit (integrator cutoff frequency). The upper cutoff frequency will be dictated by the gain and instrumentation amplifier bandwidth.

$$f_L = \frac{1}{2\pi \times R_1 \times C_1} = 16 \text{ Hz}$$

2. Choose a standard value for R_1 and C_1 .

$$C_1 = 100 \text{ nF}$$

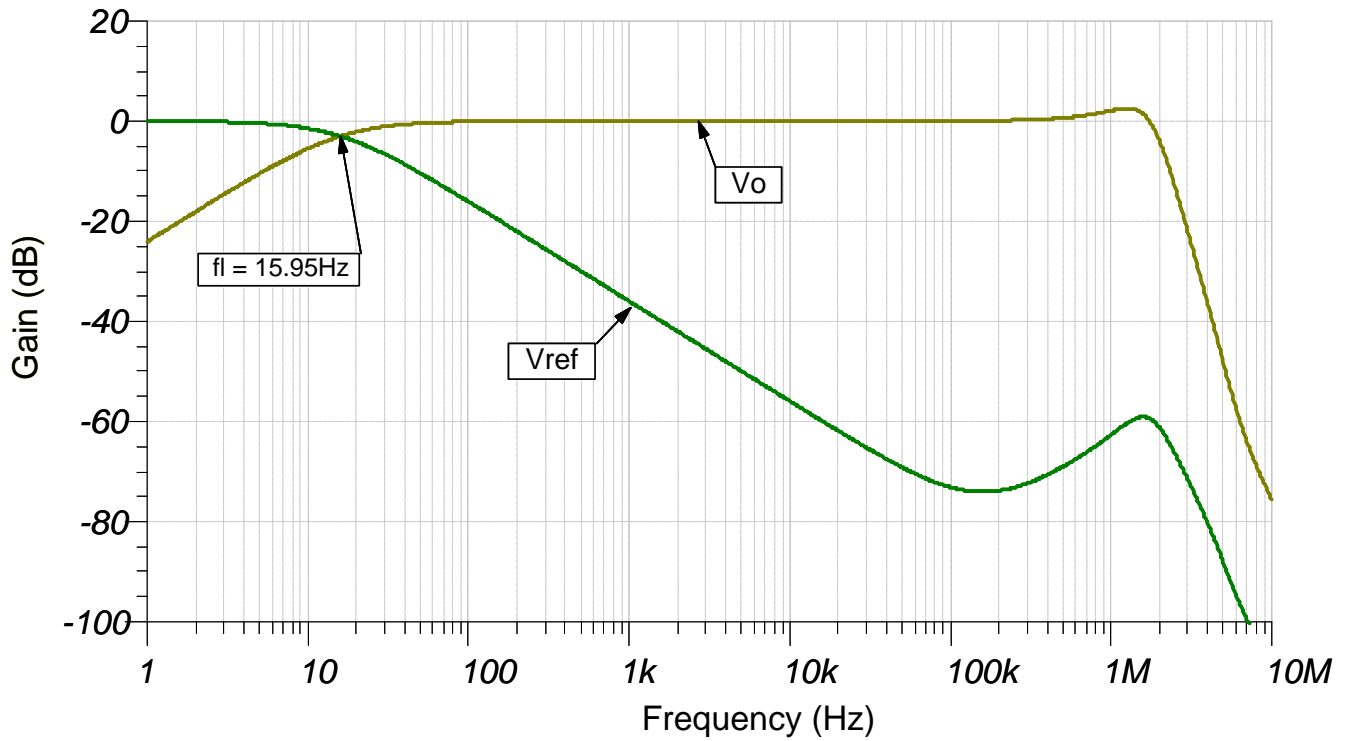
$$R_1 = \frac{1}{2\pi \times 100 \text{ nF} \times 16 \text{ Hz}} = 99.47 \text{ k}\Omega \approx 100 \text{ k}\Omega \text{ (standard value)}$$

3. The DC rejection capabilities of the circuit will degrade with gain. The following table provides a good estimate of the DC correction range for higher gains.

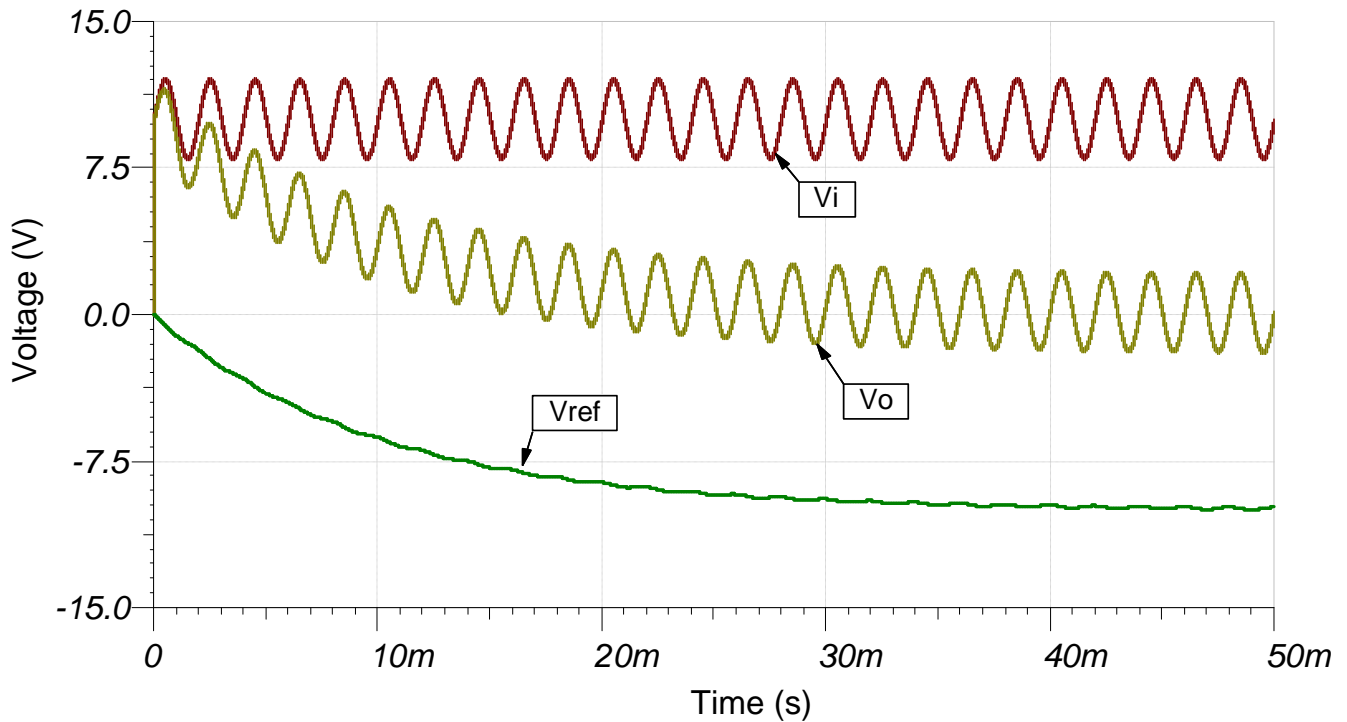
Gain	DC Correction Range
1V/V	±10V
10V/V	±1V
100V/V	±0.1V
1000V/V	±0.01V

Design Simulations

AC Simulation Results



Transient Simulation Results



Design References

See [Analog Engineer's Circuit Cookbooks](#) for TI's comprehensive circuit library.

See TINA-TI™ circuit simulation file, [SBOMAU0](#).

See TIPD191, <http://www.ti.com/tool/tipd191>.

Design Featured Instrumentation Amplifier

INA828	
V_{SS}	4.5V to 36V
V_{inCM}	$V_{ee}+2V$ to $V_{cc}-2V$
V_{out}	$V_{ee}+150mV$ to $V_{cc}-150mV$
V_{os}	20 μ V
I_q	600 μ A
I_b	150pA
UGBW	2MHz
SR	1.2V/ μ s
#Channels	1
www.ti.com/product/INA828	

Design Featured Op Amp

OPA188	
V_{SS}	8V to 36V
V_{inCM}	V_{ee} to $V_{cc}-1.5V$
V_{out}	Rail-to-rail
V_{os}	6 μ V
I_q	450 μ A
I_b	\pm 160pA
UGBW	2MHz
SR	0.8V/us
#Channels	1,2,4
www.ti.com/product/OPA188	

Design Alternate Op Amp

TLV171	
V_{SS}	2.7V to 36V
V_{inCM}	$V_{ee}-0.1V$ to $V_{cc}-2V$
V_{out}	Rail-to-rail
V_{os}	750 μ V
I_q	525 μ A
I_b	\pm 10pA
UGBW	3MHz
SR	1.5V/us
#Channels	1,2,4
www.ti.com/product/OPA188	

IMPORTANT NOTICE AND DISCLAIMER

TI PROVIDES TECHNICAL AND RELIABILITY DATA (INCLUDING DATA SHEETS), DESIGN RESOURCES (INCLUDING REFERENCE DESIGNS), APPLICATION OR OTHER DESIGN ADVICE, WEB TOOLS, SAFETY INFORMATION, AND OTHER RESOURCES "AS IS" AND WITH ALL FAULTS, AND DISCLAIMS ALL WARRANTIES, EXPRESS AND IMPLIED, INCLUDING WITHOUT LIMITATION ANY IMPLIED WARRANTIES OF MERCHANTABILITY, FITNESS FOR A PARTICULAR PURPOSE OR NON-INFRINGEMENT OF THIRD PARTY INTELLECTUAL PROPERTY RIGHTS.

These resources are intended for skilled developers designing with TI products. You are solely responsible for (1) selecting the appropriate TI products for your application, (2) designing, validating and testing your application, and (3) ensuring your application meets applicable standards, and any other safety, security, regulatory or other requirements.

These resources are subject to change without notice. TI grants you permission to use these resources only for development of an application that uses the TI products described in the resource. Other reproduction and display of these resources is prohibited. No license is granted to any other TI intellectual property right or to any third party intellectual property right. TI disclaims responsibility for, and you will fully indemnify TI and its representatives against, any claims, damages, costs, losses, and liabilities arising out of your use of these resources.

TI's products are provided subject to [TI's Terms of Sale](#) or other applicable terms available either on [ti.com](#) or provided in conjunction with such TI products. TI's provision of these resources does not expand or otherwise alter TI's applicable warranties or warranty disclaimers for TI products.

TI objects to and rejects any additional or different terms you may have proposed.

Mailing Address: Texas Instruments, Post Office Box 655303, Dallas, Texas 75265
Copyright © 2021, Texas Instruments Incorporated