

Driving a Peltier Element (TEC): Efficiency and Aging

Olivier Mellin, Florent Muret

ABSTRACT

The Peltier module is used on certain equipments in the industry that require critical temperature protection. However, it is often perceived as inefficient, cumbersome, and expensive. The purpose of this application report is to determine the module performances by driving it with Texas Instruments components, and seeing what performances can be achieved with reasonable power and equipment. A comparison between constant current drive and PWM drive is made, as constant current is often perceived as more efficient. Moreover, this application report gives a study of the aging of the module, depending on the drive.

Contents

1	Introduction	1
2	Definition of Peltier Efficiency	2
3	Setup TPS54201-Q1 and DRV8873-Q1	2
4	Peltier Aging	4
5	Conclusion	5
6	References	5

List of Figures

1	Peltier Module: Drive Schematic Example	1
2	Peltier Module: Cold Side Efficiency	1
3	Constant Current Setup	2
4	PWM Current Setup	2
5	Efficiency Test: 1 A Constant Current Drive	3
6	Efficiency Test: 2 A Peak - 50% Duty Cycle - 1 A Average PWM Current Drive	3
7	Performance Differences Between Ambient Temperature and Cold Side Temperature for Constant Current and PWM Current	3
8	Performance Differences Between Ambient Temperature and Hot Side Temperature for Constant Current and PWM Current	3
9	Peltier Aging Test Over One Month	4

List of Tables

Trademarks

All trademarks are the property of their respective owners.

1 Introduction

The Peltier Module is a device with an interesting feature. When voltage is applied across its inputs, a flow of DC current is created across the junction of the semiconductors, causing a temperature difference. The side with the cooling plate absorbs heat which is then moved to the other side of the device where the heat sink is. Thermoelectric coolers (TECs) are typically connected side-by-side and sandwiched between two ceramic plates. The cooling ability of the total unit is then proportional to the number of TECs in it.

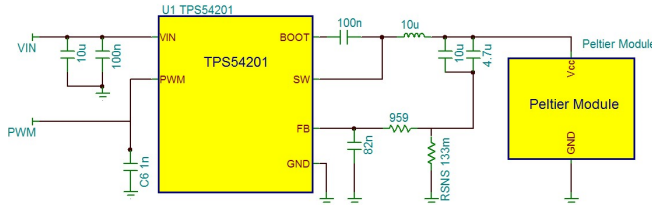


Figure 1. Peltier Module: Drive Schematic Example



Figure 2. Peltier Module: Cold Side Efficiency

This behavior can be used to generate heat, cold, or switch between the two options just by reversing the drive polarity.

2 Definition of Peltier Efficiency

This section gives an overview about the performance that can be reached using a reasonable amount of power. For this test, a 17.9 W, 3.9 A, 7.6 V, 30-mm x 15-mm ET-063-10-13 Peltier module is used. The performances can be defined by the difference of temperature between the ambient temperature and the cold side, as well as the difference of temperature between the ambient temperature and the hot side.

$$\Delta T = T_{\text{ambient}} - T_{\text{cold side}} \tag{1}$$

$$\Delta T = T_{\text{ambient}} - T_{\text{hot side}} \tag{2}$$

In order to test the Peltier performances, a [heat sink](#) is added, which allows dissipating the heat generated by the hot side. This is an important parameter, which needs to be seriously taken in to consideration, as it influences a lot of the performances of the Peltier.

3 Setup TPS54201-Q1 and DRV8873-Q1

In this study, the Peltier module is driven in current as it is made with PN junction. Therefore, it is more accurate to use constant current drive than voltage drive as its impedance varies with temperature. Delta T remains constant across the entire temperature range when driven in current. While driven in voltage, the delta T does not remain constant as the TEC impedance varies with temperature.

In order to determine which type of current is more efficient, tests are performed with both constant current and PWM current (at 50% duty cycle).

- Constant current: The simplest way to drive the module is with a constant current. In this application, a [TPS54201-Q1](#) was used to supply a constant current. Although it is a switcher, the output filter provides a near constant current source with only marginal ripple.
- PWM driving: A common way of modulating the current is to pulse current through the load, then keeping the peak current constant and varying the ON and OFF duty cycle to make the average current change. This is commonly referred to as PWM driving. In this use case, the full bridge motor driver [DRV8873-Q1](#) was used to reverse the heat and cold side when needed.

Figure 3 and Figure 4 show the two block diagrams of the two setups.

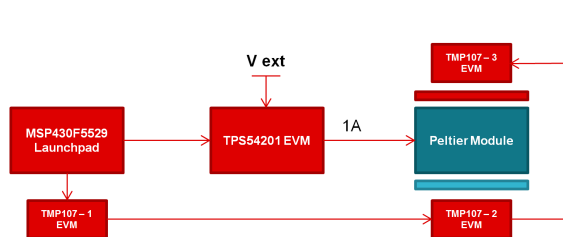


Figure 3. Constant Current Setup

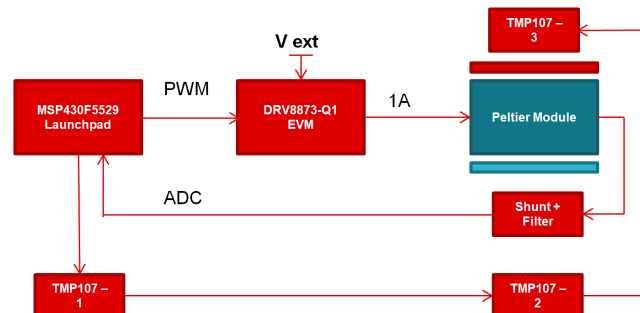


Figure 4. PWM Current Setup

Precise that no filtering is used between the H bridge driver and the Peltier module (the hardware used for this demo is the [DRV8873-Q1](#) without modification). The temperature is recorded by using three accurate sensors, the [TMP107-Q1](#), which respectively senses the hot side, the cold side, and the ambient temperature. Thermal paste is added under the temperature sensors to increase the thermal transfer, which leads to more accurate temperature reading.

[Figure 5](#) and [Figure 6](#) show the performances with a 1 A drive: one with constant current, and one with PWM current (0 A/2 A – 50% duty cycle which leads to a 1-A average current, with a 20-Khz PWM frequency).

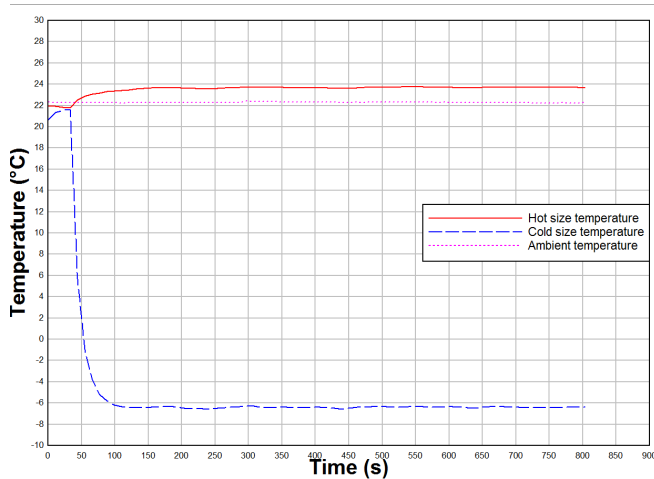


Figure 5. Efficiency Test: 1 A Constant Current Drive

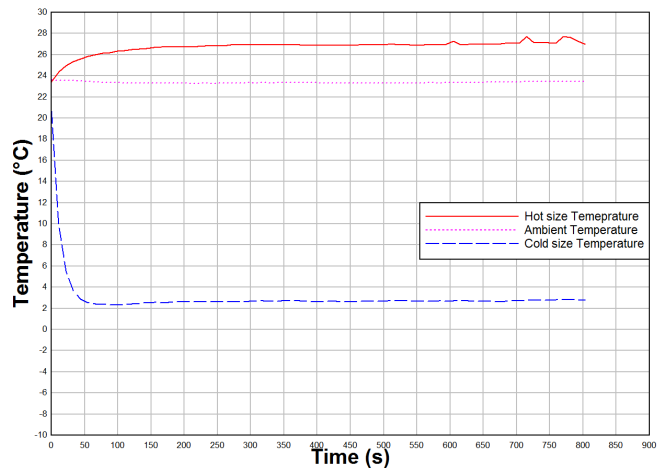


Figure 6. Efficiency Test: 2 A Peak - 50% Duty Cycle - 1 A Average PWM Current Drive

As seen in [Figure 6](#), while using constant current, the difference of temperature between the cold side and the ambient temperature is **8.1°C** greater than while using PWM current. Using constant current is **39.2%** more efficient than the PWM current. As the ambient temperature for the tests are around 25°C, ice was created all around the module, as seen in [Figure 2](#). After several tests at different currents, efficiency slopes were created to compare both drives. See [Figure 7](#) and [Figure 8](#) for the efficiency slopes.

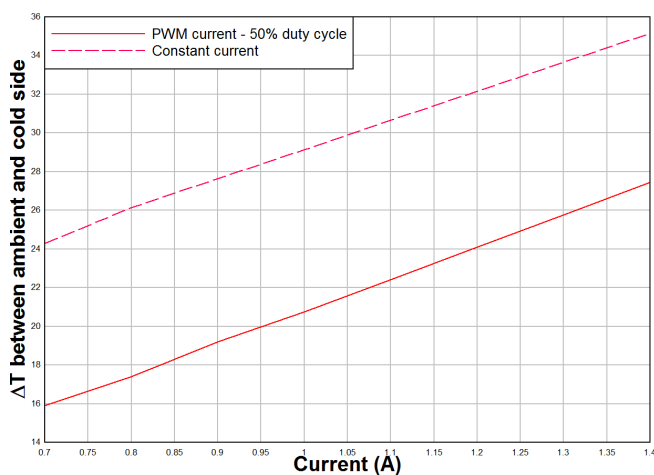


Figure 7. Performance Differences Between Ambient Temperature and Cold Side Temperature for Constant Current and PWM Current

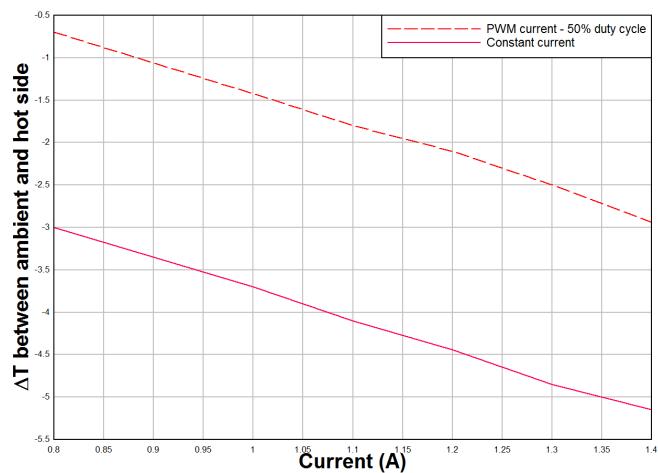


Figure 8. Performance Differences Between Ambient Temperature and Hot Side Temperature for Constant Current and PWM Current

As shown in [Figure 7](#) and [Figure 8](#), the PWM current is constantly inferior in terms of efficiency for a wide current range. The temperature differences created with the two types of drive are constant with a **8.2°C** gap between the cold side and the ambient temperature, and a **2.5°C** gap between the hot side and ambient temperature, for both current drive.

An alternative to the full bridge to drive the Peltier module in constant current while keeping the ability to reverse the drive polarity would have been to use a buck boost converter, such as the [TPS63020](#). See the [Low-power TEC Driver Application Report](#) for more information about this topology.

4 Peltier Aging

This section studies the impact of aging on the Peltier module. In order to know how much the performances are reduced due to the wear out, the following test was performed. During five months, two Peltier modules with the same efficiency performances were continuously submitted to a constant current drive of 1.4 A. One Peltier module was with PWM current, and the other one was with constant current (using the [DRV8873-Q1](#) and the [TPS54201-Q1](#) respectively).

During this time, an autonomous setup recorded the temperature of the cold side, the hot side, and the ambient temperature every 20 minutes. [Figure 9](#) shows the result of this test after one month of aging.

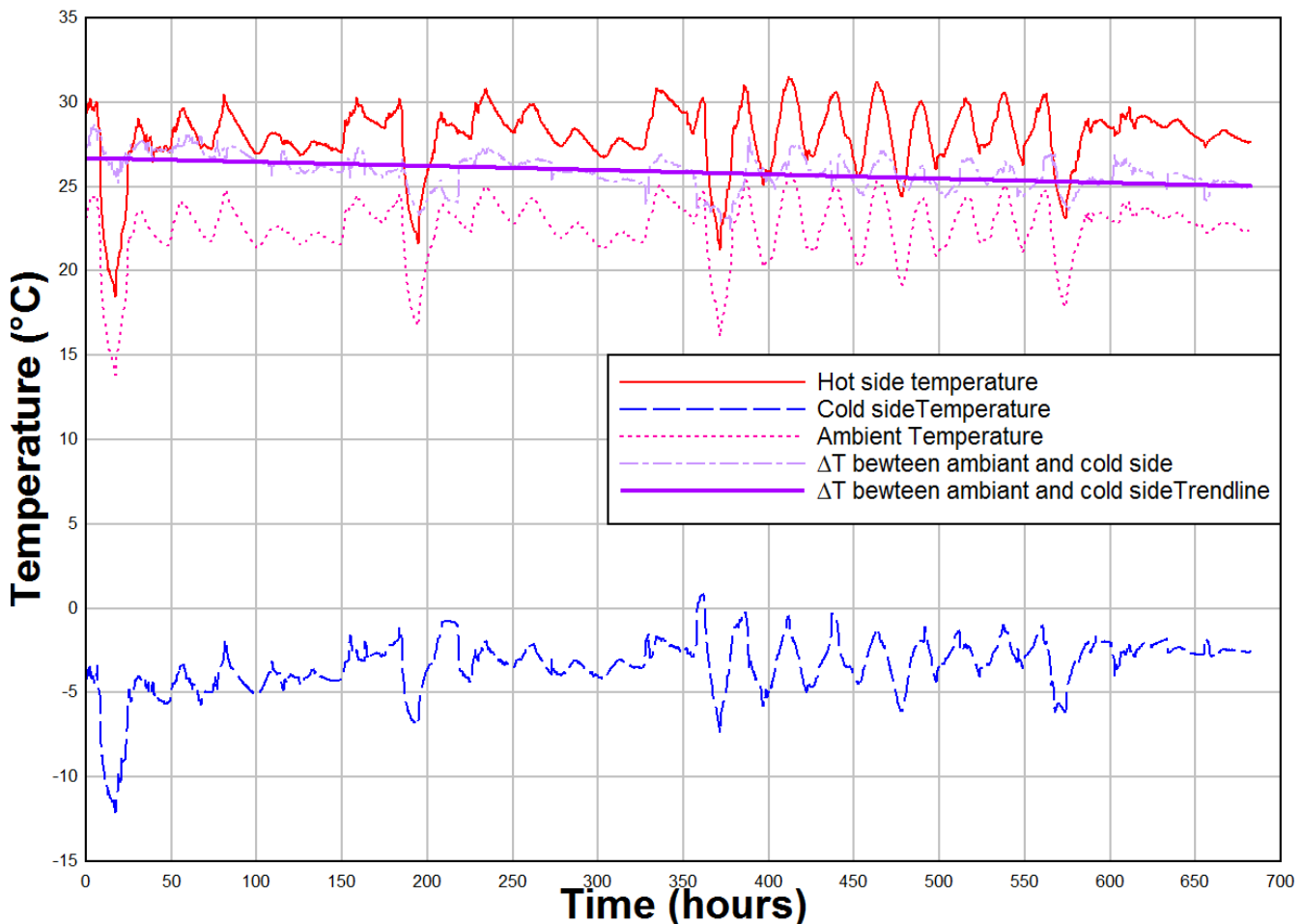


Figure 9. Peltier Aging Test Over One Month

As seen in [Figure 9](#), there is a constant fluctuation for all temperatures (hot side/cold side/ambient temperature), which is due to the variation of the temperature in the room where the tests are performed.

It shows that the temperature on the cold side of the Peltier module is really dependent on the ambient temperature. However, the performances (ΔT between ambient temperature and cold side) remain almost stable. The performance decreases slightly as shown by the purple trendline slope.

After this month of aging, the efficiency tests were performed again and showed no performance difference. The observed loss of efficiency actually corresponded to the degradation of the thermal paste (which permits to improve the thermal bonding) between the Peltier module and the temperature sensors.

The same test was then performed four months afterward. The following are the results:

- PWM current: The ΔT between the cold side and the ambient temperature does not change. The results stay the same over the time.
- Linear current: The ΔT between the cold side remains the exact same.

5 Conclusion

This application report shows that with a reasonable amount of power budget (2.5 V at 1 A, 2.5 W), even though the Peltier is not cooling anything, significant temperature differences were obtained, which can be interesting in some applications.

Moreover, constant current drive is definitively preferred over PWM drive. If the design requires the ability to reverse polarity, the full bridge is the most flexible option but it significantly reduces the efficiency. The buck boost [TPS63020](#) is an alternative. Finally, testing for five months continuously (3600 hours) does not seem to have any significant measurable performance influence.

6 References

- [TPS54201-Q1](#): TPS54201 4.5-V to 28-V Input Voltage, 1.5-A Output Current, Synchronous Buck Mono-Color or IR LED Driver
- [TPS54201 EVM](#): TPS54201 4.5V-to-28V Input Voltage, Synchronous Buck LED Driver Evaluation Module
- [DRV8873-Q1](#): Automotive H-bridge Motor Driver with Integrated Current Sensing and Current Sense Output
- [DRV8873-Q1 EVM](#): Automotive 10A H-Bridge Motor Driver with SPI Interface and Integrated Current Sensing EVM
- [TMP107-Q1](#): $\pm 0.4^\circ\text{C}$ Temperature Sensor with Daisy-Chain UART, EEPROM, and Alert Function,
- [TMP107EVM](#): TMP107 Evaluation Module
- [MSP430F5529 Launchpad](#): 25 MHz MCU with Integrated USB Phy, 128 KB Flash, 8 KB RAM, 12Bit/14 Channel ADC, 32BIT HW Multiplier
- [TPS63020](#): High Efficiency Single Inductor Buck-Boost Converter with 4 A Switch, [EVM](#)

Revision History

NOTE: Page numbers for previous revisions may differ from page numbers in the current version.

Changes from Original (July 2019) to A Revision	Page
• Updated content in Section 3	2

IMPORTANT NOTICE AND DISCLAIMER

TI PROVIDES TECHNICAL AND RELIABILITY DATA (INCLUDING DATASHEETS), DESIGN RESOURCES (INCLUDING REFERENCE DESIGNS), APPLICATION OR OTHER DESIGN ADVICE, WEB TOOLS, SAFETY INFORMATION, AND OTHER RESOURCES "AS IS" AND WITH ALL FAULTS, AND DISCLAIMS ALL WARRANTIES, EXPRESS AND IMPLIED, INCLUDING WITHOUT LIMITATION ANY IMPLIED WARRANTIES OF MERCHANTABILITY, FITNESS FOR A PARTICULAR PURPOSE OR NON-INFRINGEMENT OF THIRD PARTY INTELLECTUAL PROPERTY RIGHTS.

These resources are intended for skilled developers designing with TI products. You are solely responsible for (1) selecting the appropriate TI products for your application, (2) designing, validating and testing your application, and (3) ensuring your application meets applicable standards, and any other safety, security, or other requirements. These resources are subject to change without notice. TI grants you permission to use these resources only for development of an application that uses the TI products described in the resource. Other reproduction and display of these resources is prohibited. No license is granted to any other TI intellectual property right or to any third party intellectual property right. TI disclaims responsibility for, and you will fully indemnify TI and its representatives against, any claims, damages, costs, losses, and liabilities arising out of your use of these resources.

TI's products are provided subject to TI's Terms of Sale (www.ti.com/legal/termsofsale.html) or other applicable terms available either on ti.com or provided in conjunction with such TI products. TI's provision of these resources does not expand or otherwise alter TI's applicable warranties or warranty disclaimers for TI products.

Mailing Address: Texas Instruments, Post Office Box 655303, Dallas, Texas 75265
Copyright © 2020, Texas Instruments Incorporated