

Enabling Multiple TPS4019x Devices

Don Rhodes

Analog Field Applications

ABSTRACT

The TPS4019x (TPS40190, TPS40192, TPS40193, TPS40195, TPS40197) family of DC/DC synchronous buck controllers have an internal structure on the Enable input that is somewhat uncommon and requires care when connecting multiple enable pins together. This application report discusses specific solutions which address this issue so a single control signal can reliably drive the ENABLE pins of multiple TPS4019x devices.

The TPS4019x (TPS40190, TPS40192, TPS40193, TPS40195, TPS40197) family of DC/DC synchronous buck controllers have an internal structure on the Enable input that is somewhat uncommon and requires care when connecting multiple enable pins together. As shown in Figure 1, the structure of the Enable input of the TPS4019x family has a Darlington transistor followed by a diode in parallel with a 1k Ω pull-down resistor through an N-channel MOSFET. Once the Enable threshold has been achieved, the voltage on the ENABLE pin will be self-clamped. When that happens, one controller can meet its Enable V_{IH} requirement before the other(s), and it clamps the voltage on the common Enable node. This pulls the Enable voltage on the other part(s) below their respective Enable thresholds and can prevent them from turning on.

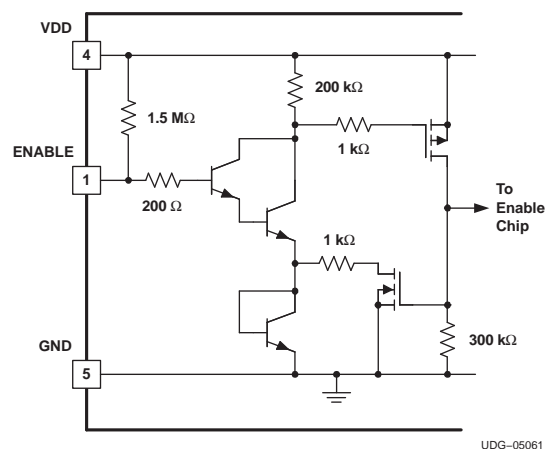


Figure 1. TPS4019x Enable Input Structure

Initially, the ENABLE pin voltage will be clamped to the three V_{be} forward voltages in series; this subsequently turns on the lower MOSFET pulling down the 1k Ω resistor, clamping the ENABLE pin to its steady-state voltage. The Enable voltage waveform is shown in Figure 2. The conditions for this waveform are the same as described in the Discrete Small Signal Transistor Method section, see Figure 3.

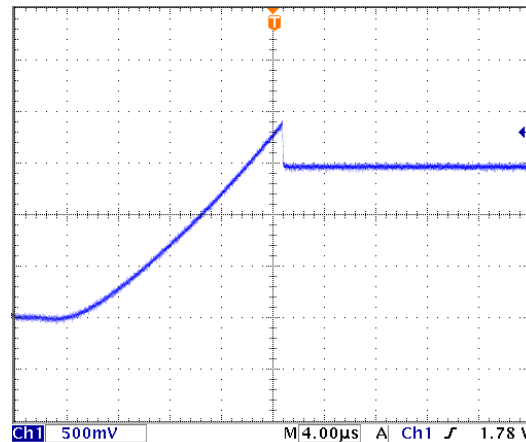


Figure 2. Voltage on the ENABLE Pin of a TPS4019x Device

There are a variety of solutions to this problem, all of which are relatively easy to implement and are very low in cost. The main idea of each solution should be to isolate/buffer the clamped voltage on the ENABLE pin of a given device from the ENABLE pins on subsequent TPS4019x controllers. The following are a few ideas which may benefit a designer in ensuring reliable turn-on of multiple TPS4019x controllers from a single enable control signal.

Discrete Small Signal Transistor Method

Using a single discrete small signal transistor is one alternative that is a low cost and effective means of buffering the ENABLE pin. This option could be configured as shown in the data sheet and as shown in Figure 3. Note that there is an internal 1.5MΩ pull-up resistor (see Figure 1) which satisfies the need for a pull-up resistor. Of course, the base/gates of the individual transistors could be tied together to enable multiple TPS4019x controllers with a single enable signal.

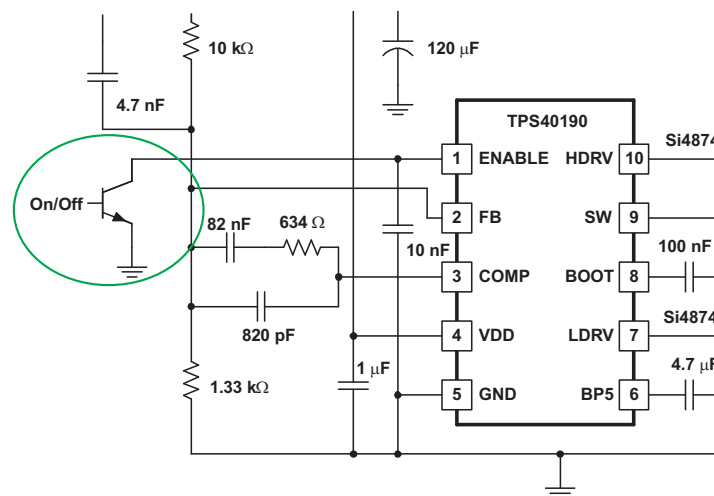


Figure 3. Discrete Transistor Buffer

An open drain buffer/driver like the SN74LVC2G07 could be used in place of the discrete transistor shown in Figure 3. Again the internal 1.5MΩ pull-up resistor could be used as noted previously. However, if an external pull-up resistor is required, the current into the ENABLE pin must be limited to less than 500µA. Therefore, it is important to correctly select the pull-up resistor on the open drain output of the buffer. The steady-state current into the ENABLE pin will simply be:

$$I_{enable} = (V_{cc} - V_{enable}) / R_{pullup} \quad (1)$$

V_{cc} is the supply voltage to pull up Enable. For V_{enable} , use V_{IL} (min) 0.6V from the datasheet.

Resistive Divider Method

Yet another option for isolating the ENABLE pins of multiple TPS4019x controllers is a resistive divider method as shown in [Figure 4](#).

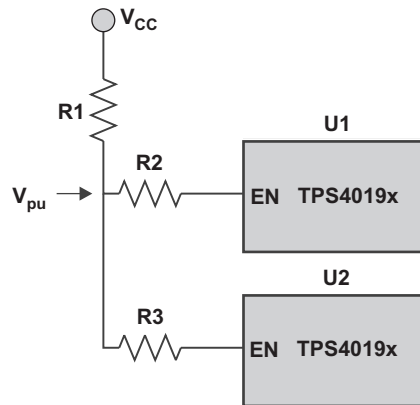


Figure 4. Block Diagram for Resistive Divider Method

In this case a designer selects the resistor values such that:

1. The current into the ENABLE pin is limited to less than 500 μ A
2. V_{pu} is high enough to enable both parts; though one before the other

The nodal equation for the enable circuit in [Figure 4](#) is as follows:

$$\frac{V_{cc} - V_{pu}}{R1} + \frac{V_{IL} - V_{pu}}{R2} - \frac{V_{dd} - V_{IH}}{1.5M\Omega} = 0 \quad (2)$$

Example:

Calculate the V_{pu} level using values in the TPS40190 datasheet for the values of V_{IL} and V_{IH} and selecting values for V_{cc} and V_{dd} based on a given design.

$V_{IL} = 0.6V$ (worst case clamped enable voltage on first TPS40190 enabled)

$V_{IH} = 2.8V$ (worst case threshold to enable the second TPS40190, use [Table 1](#) based on selected device)

Table 1. Enable V_{IH} Max Values of TPS4019x Devices

Device	TPS40190	TPS40192	TPS40193	TPS40195	TPS40197
Enable V_{IH} max (V)	2.8	3.0	3.0	3.0	3.0

Let $R1 = 4.9k\Omega$, $R2 = R3 = 24.9 k\Omega$, $V_{cc} = 3.3V$, $V_{dd} = 12V$

Solving for V_{pu} :

$$V_{pu} = \frac{V_{cc} \times R2 + V_{IL} \times R1}{R2 + R1} - \frac{(V_{dd} - V_{IH})(R1 \times R2)}{1.5M\Omega(R2 + R1)} \quad (3)$$

$V_{pu} = 2.83V$

Since V_{pu} is higher than V_{IH} , the second TPS40190 also can be turned on. The current into both ENABLE pins is limited to less than 500 μ A.

IMPORTANT NOTICE

Texas Instruments Incorporated and its subsidiaries (TI) reserve the right to make corrections, enhancements, improvements and other changes to its semiconductor products and services per JESD46C and to discontinue any product or service per JESD48B. Buyers should obtain the latest relevant information before placing orders and should verify that such information is current and complete. All semiconductor products (also referred to herein as "components") are sold subject to TI's terms and conditions of sale supplied at the time of order acknowledgment.

TI warrants performance of its components to the specifications applicable at the time of sale, in accordance with the warranty in TI's terms and conditions of sale of semiconductor products. Testing and other quality control techniques are used to the extent TI deems necessary to support this warranty. Except where mandated by applicable law, testing of all parameters of each component is not necessarily performed.

TI assumes no liability for applications assistance or the design of Buyers' products. Buyers are responsible for their products and applications using TI components. To minimize the risks associated with Buyers' products and applications, Buyers should provide adequate design and operating safeguards.

TI does not warrant or represent that any license, either express or implied, is granted under any patent right, copyright, mask work right, or other intellectual property right relating to any combination, machine, or process in which TI components or services are used. Information published by TI regarding third-party products or services does not constitute a license to use such products or services or a warranty or endorsement thereof. Use of such information may require a license from a third party under the patents or other intellectual property of the third party, or a license from TI under the patents or other intellectual property of TI.

Reproduction of significant portions of TI information in TI data books or data sheets is permissible only if reproduction is without alteration and is accompanied by all associated warranties, conditions, limitations, and notices. TI is not responsible or liable for such altered documentation. Information of third parties may be subject to additional restrictions.

Resale of TI components or services with statements different from or beyond the parameters stated by TI for that component or service voids all express and any implied warranties for the associated TI component or service and is an unfair and deceptive business practice. TI is not responsible or liable for any such statements.

Buyer acknowledges and agrees that it is solely responsible for compliance with all legal, regulatory and safety-related requirements concerning its products, and any use of TI components in its applications, notwithstanding any applications-related information or support that may be provided by TI. Buyer represents and agrees that it has all the necessary expertise to create and implement safeguards which anticipate dangerous consequences of failures, monitor failures and their consequences, lessen the likelihood of failures that might cause harm and take appropriate remedial actions. Buyer will fully indemnify TI and its representatives against any damages arising out of the use of any TI components in safety-critical applications.

In some cases, TI components may be promoted specifically to facilitate safety-related applications. With such components, TI's goal is to help enable customers to design and create their own end-product solutions that meet applicable functional safety standards and requirements. Nonetheless, such components are subject to these terms.

No TI components are authorized for use in FDA Class III (or similar life-critical medical equipment) unless authorized officers of the parties have executed a special agreement specifically governing such use.

Only those TI components which TI has specifically designated as military grade or "enhanced plastic" are designed and intended for use in military/aerospace applications or environments. Buyer acknowledges and agrees that any military or aerospace use of TI components which have **not** been so designated is solely at the Buyer's risk, and that Buyer is solely responsible for compliance with all legal and regulatory requirements in connection with such use.

TI has specifically designated certain components which meet ISO/TS16949 requirements, mainly for automotive use. Components which have not been so designated are neither designed nor intended for automotive use; and TI will not be responsible for any failure of such components to meet such requirements.

Products

Audio	www.ti.com/audio
Amplifiers	amplifier.ti.com
Data Converters	dataconverter.ti.com
DLP® Products	www.dlp.com
DSP	dsp.ti.com
Clocks and Timers	www.ti.com/clocks
Interface	interface.ti.com
Logic	logic.ti.com
Power Mgmt	power.ti.com
Microcontrollers	microcontroller.ti.com
RFID	www.ti-rfid.com
OMAP Mobile Processors	www.ti.com/omap
Wireless Connectivity	www.ti.com/wirelessconnectivity

Applications

Automotive and Transportation	www.ti.com/automotive
Communications and Telecom	www.ti.com/communications
Computers and Peripherals	www.ti.com/computers
Consumer Electronics	www.ti.com/consumer-apps
Energy and Lighting	www.ti.com/energy
Industrial	www.ti.com/industrial
Medical	www.ti.com/medical
Security	www.ti.com/security
Space, Avionics and Defense	www.ti.com/space-avionics-defense
Video and Imaging	www.ti.com/video

TI E2E Community e2e.ti.com