

## **DPI Evaluation TPS65381-Q1**

---

Michael Wendt

Mixed Signal Automotive-Catalog

### **ABSTRACT**

*The TPS65381 is a multi-rail power supply designed to supply microcontrollers in safety critical applications, such as those found in automotive. The device supports Texas Instruments TMS570LS series 16/32-Bit RISC Flash MCU and other microcontrollers with dual-core lockstep (LS) or loosely coupled architectures (LC).*

*The TPS65381 integrates multiple supply rails to power the MCU, CAN or FlexRay and an external sensor. An asynchronous buck switch-mode power supply converter with internal FET converts the input battery voltage to a 6V pre-regulator output. This 6V is used to supply the other regulators. A fixed 5V linear regulator with internal FET is integrated to be used as e.g. CAN supply. A second linear regulator with also internal FET regulates the 6V to a selectable 5V or 3.3V MCU IO voltage. The TPS65381 comprises a linear regulator controller with external FET and resistor divider, regulating the 6V to an externally adjustable core voltage between 0.8V and 3.3V. The DPI (Direct Power Injection) evaluation will show the robustness of the TPS65381 device during HF Power injection at Global Pins. This test cannot replace other customer tests like BCI (Bulk Current Injection), but it gives a first indication how the device behave under HF stress.*

## Contents

<b>1</b>	<b>DPI test TPS65381 .....</b>	<b>3</b>
<b>2</b>	<b>DPI set up.....</b>	<b>4</b>
<b>3</b>	<b>The test flow .....</b>	<b>5</b>
<b>4</b>	<b>Equipment used for the DPI test .....</b>	<b>6</b>
<b>5</b>	<b>Application data .....</b>	<b>6</b>
<b>6</b>	<b>The nodes stressed with DPI in application circuit TPS65381 .....</b>	<b>7</b>
<b>7</b>	<b>The observed signal during DPI stress .....</b>	<b>7</b>
<b>8</b>	<b>Test Results.....</b>	<b>8</b>
	8.1 VBATP+VBAT_SAFING, CW .....	8
	8.2 VBATP+VBAT_SAFING, AM.....	9
	8.3 IGN, CW.....	10
	8.4 IGN, AM.....	11
	8.5 VSOUT1, CW .....	12
	8.6 VSOUT1, AM.....	13
	8.7 VBATP+VBAT_SAFING, no load, CW.....	14
	8.8 VBATP+VBAT_SAFING+add. Cap, no load, AM.....	15
<b>9</b>	<b>DPI Test Summary.....</b>	<b>15</b>

## Figures

Figure 1, DPI Set Up.....		4
Figure 2, Test Flow.....		5
Figure 3, VBAT+VBAT_SAFING, CW .....		8
Figure 4, VBATP+VBAT_SAFING, AM .....		9
Figure 5, IGN, CW.....		10
Figure 6, IGN, AM .....		11
Figure 7, VSOUT1, CW.....		12
Figure 8, VSOUT1, AM .....		13
Figure 9, VBAT+VBAT_SAFING, no load, CW.....		14
Figure 10, VBATP+VBAT_SAFING, no load, AM.....		15

## 1 DPI test TPS65381

To ensure the EMC performance of the TPS65381, a BCI test in the real application is needed.

- The BCI (Bulk Current injection) test is difficult in an early phase of the system development since ECU is not available yet.
- Without BCI test results failures might be detected too late in the development flow.
- The DPI test is one way to detect EMC weakness of the device even if it does not ensure the pass of the BCI test.
- For the DPI test the TPS65381 is used on standard EVM at room temperature (about 25°C). The DUT (Device under Test) is soldered on the board. Additional capacitors of 100uF/50V and 100nF were added from VBATP to GND to bring the circuit closer to a real application and stabilize the supply voltage locally.
- The DPI tests were performed in DIAGNOSTIC or ACTIVE mode, all voltage regulators turned on with certain resistive loads, unless otherwise noted
- The TPS65381 was stressed with injected HF power at certain nodes and the reaction of the device will be observed. Step by step the forward power will be increased up to 30dBm(1W) maximum peak. This test was performed at certain frequencies.
- Certain signals are observed in digital way and analog output voltages with a multimeter/oscilloscope.
- For each first failure the HF power and the type of failure was documented.
- The same procedure will be performed for the next frequency.
- The 16 suggested frequencies are: 1MHz, 2MHz, 3MHz, 5MHz, 8MHz, 10MHz, 20MHz, 30MHz, 50MHz, 80MHz, 100MHz, 200MHz, 300MHz, 500MHz, 800MHz, 1GHz
- DPI test signal is CW and AM 1KHZ modulation and 80% modulation.

## 2 DPI set up

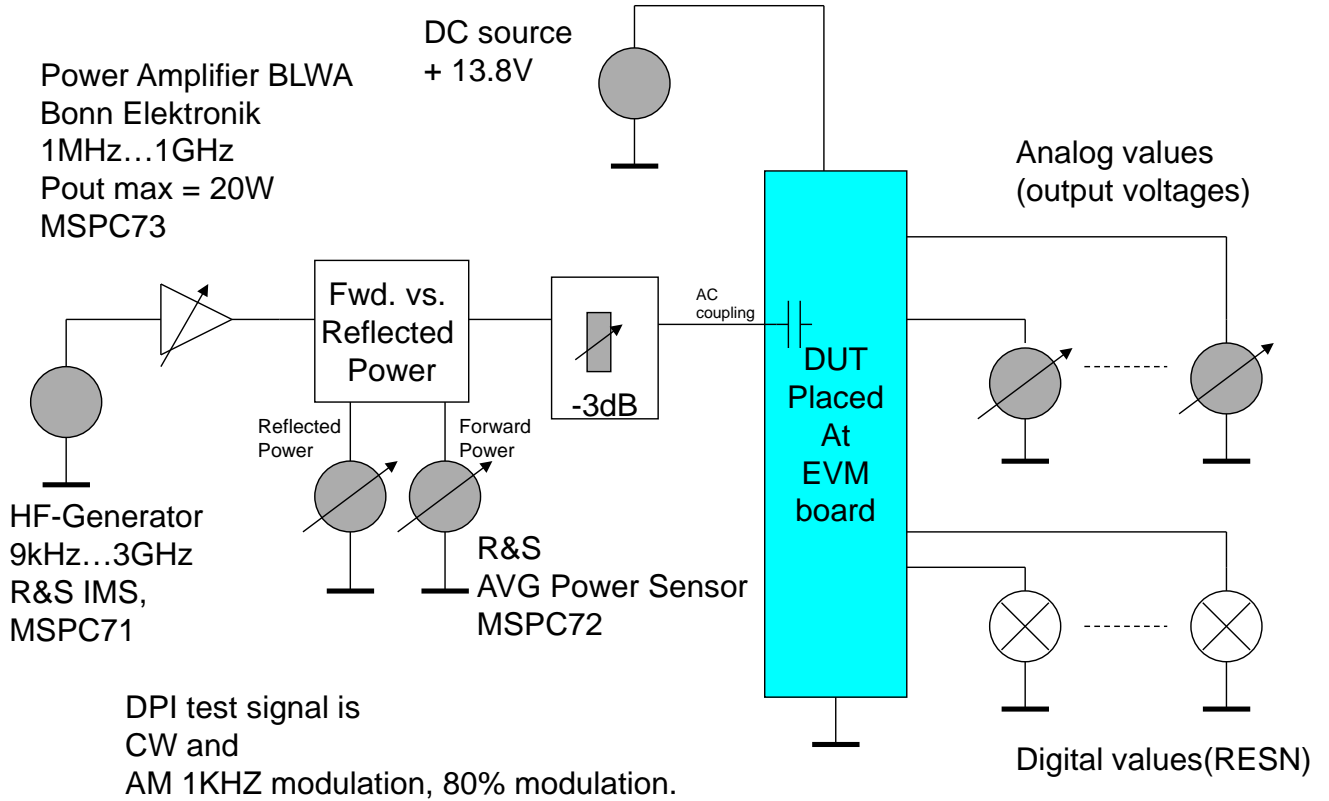
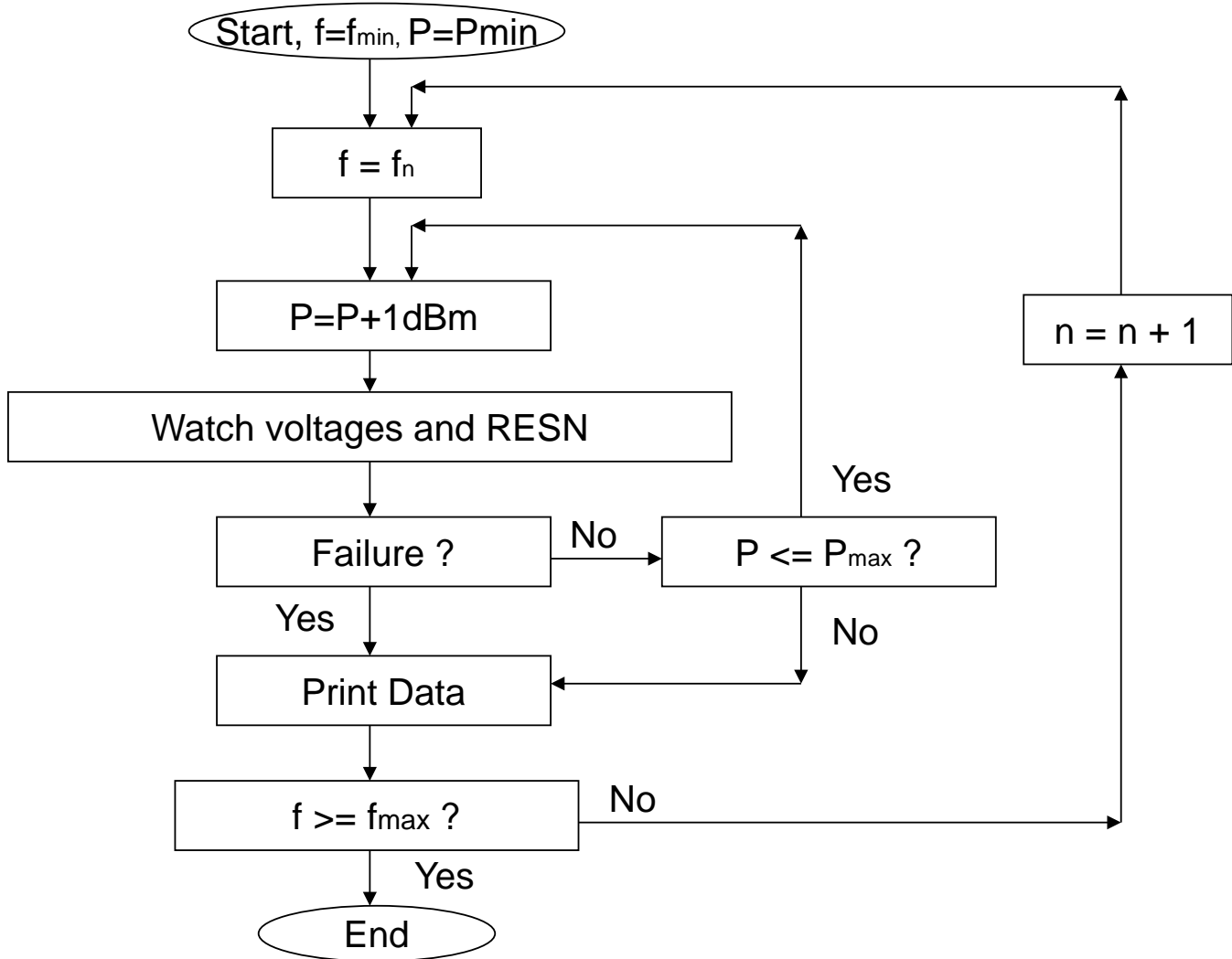


Figure 1, DPI Set Up

**3 The test flow**



**Figure 2, Test Flow**

## 4 Equipment used for the DPI test

- Standard EVM TPS65381\_RevB, additional Caps 100nF + 100 $\mu$ F at VBATP and VBAT\_SAFING
- Power Supply Statron, MSPC16
- HF-Generator, Rohde & Schwarz, IMS, 9kHz-3GHz, MSPC71
- HF Amplifier, Bonn Elektronik, BLWA 0110-20, 1MHz-1GHz, 20W, MSPC72
- Power Sensor, Rohde & Schwarz, NRP-Z91, MSPC72
- Multimeter Fluke 175, MSPC57, MSPC83
- Multimeter Keithley 2000, MSPC50
- MultiMate Keithley 2100, MSPC94, MSPC95
- Oscilloscope Le Croy 6100, MSPC9

## 5 Application data

Used board: Standard EVM TPS65381\_RevB, additional Caps at VBATP and VBAT\_SAFING (100nF + 100 $\mu$ F Elko). About 75% of max. load was defined as standard load. The device was stressed with standard load and for VBat=VBATP+VBAT\_SAFING with no load condition.

- VBat = 3.8V ,  $T_A = 25^\circ\text{C}$ ,  $I_{VBAT} = 0.444\text{A}$
- VDD6
  - 6V
  - No load
- VDD1
  - 1.2V, 0.444 (74% of  $I_{max}$ )A,  $P_v = 2.2\text{W}$
  - 2.7 $\Omega$  0.55W
- VDD3/5
  - 5V, 0.23A (77% of  $I_{max}$ ),  $P_v = 0.23\text{W}$
  - 22 $\Omega$  1.2W

- VDD5
  - 5.0V, 0.24A (77% of I<sub>max</sub>), P<sub>v</sub> = 0.23W
  - 22Ω 1.2W
- VSOUT
  - 5V, 0.073A (73% of I<sub>max</sub>), P<sub>v</sub> = 0.073W
  - 68Ω 0.4W

## **6 The nodes stressed with DPI in application circuit TPS65381**

- Global Pins
  - VBATP + VBAT\_SAFING
  - IGN
  - VSOUT1

## **7 The observed signal during DPI stress**

- Supply current
  - IVBAT
- Voltages
  - VDD1
  - VDD3/5
  - VDD5
  - NRES
  - VSOUT1 in case VSOUT1 was tested

## 8 Test Results

### 8.1 VBAT+VBAT\_SAFING, CW

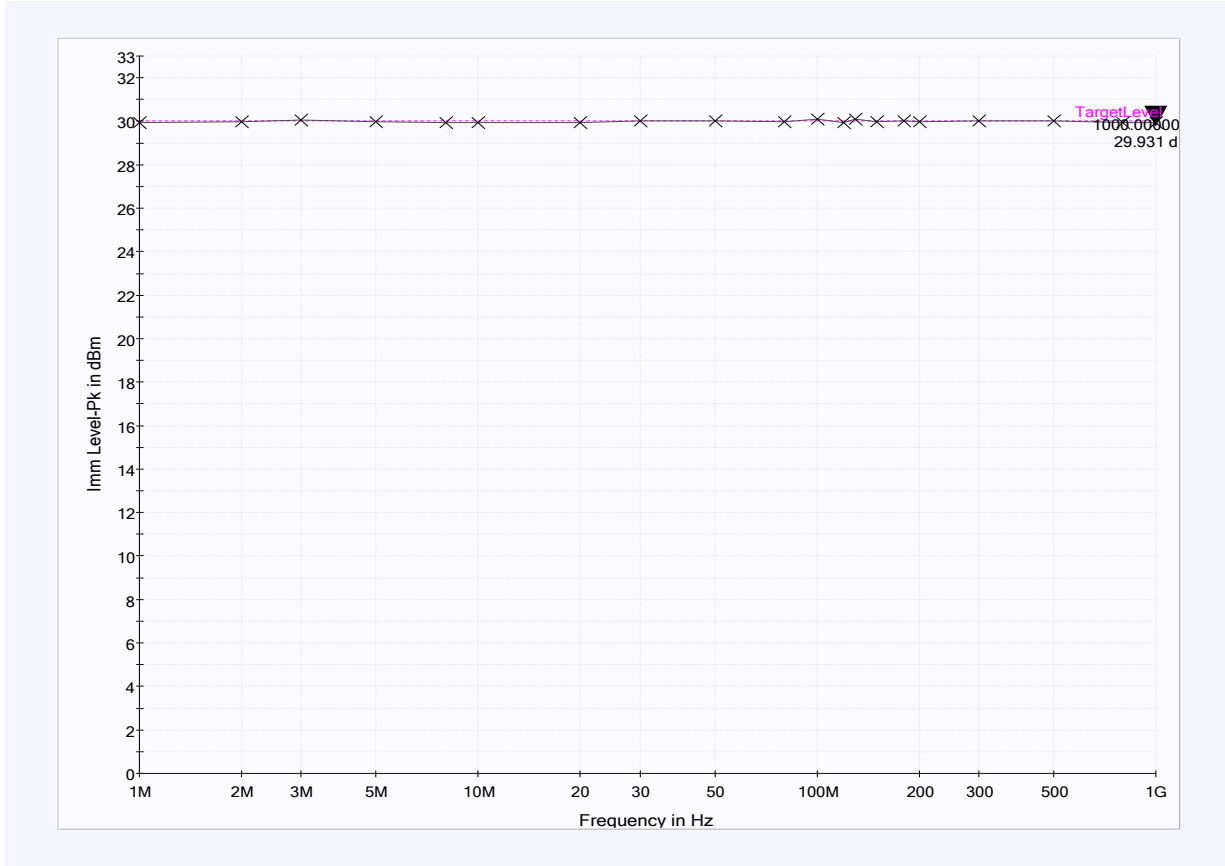


Figure 3, VBAT+VBAT\_SAFING, CW



## 8.2 VBATP+VBAT\_SAFING, AM

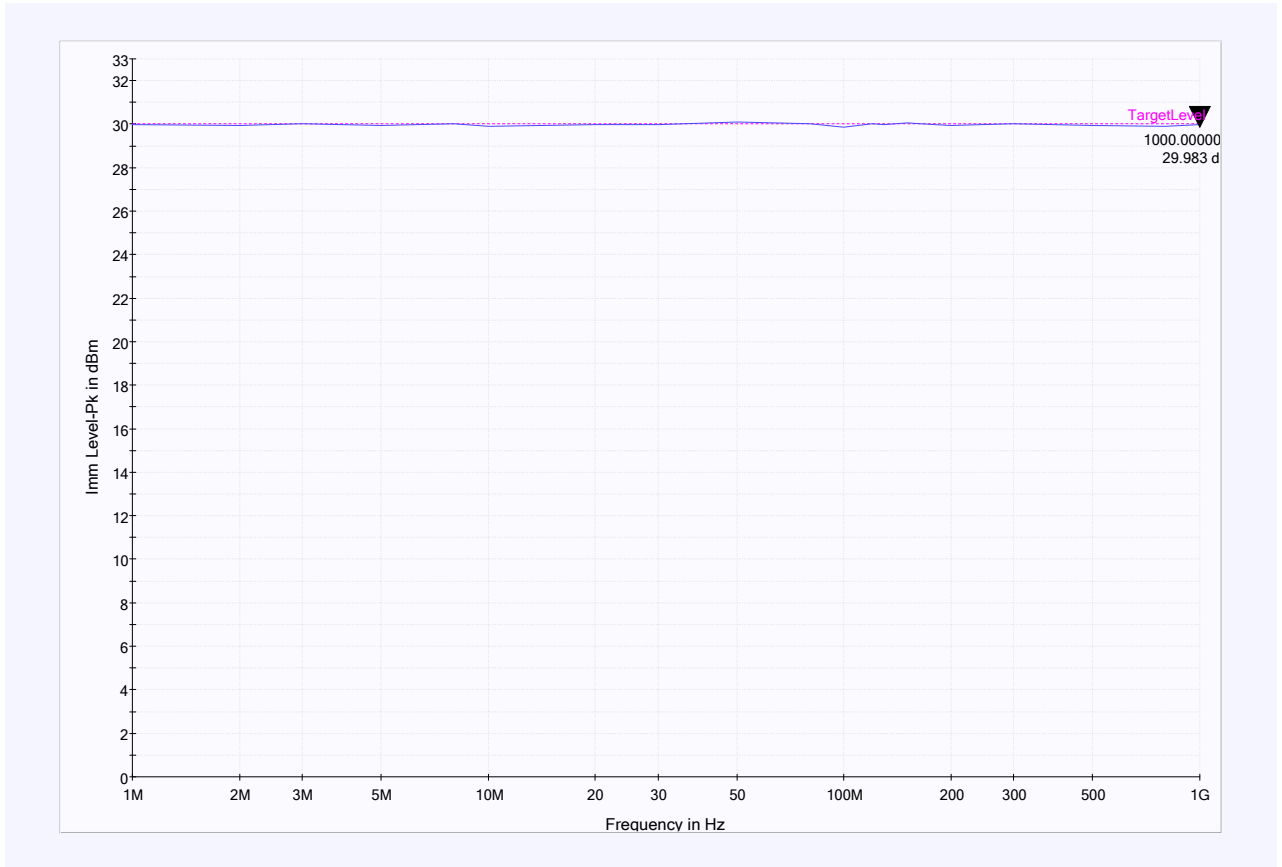


Figure 4, VBATP+VBAT\_SAFING, AM

### 8.3 IGN, CW

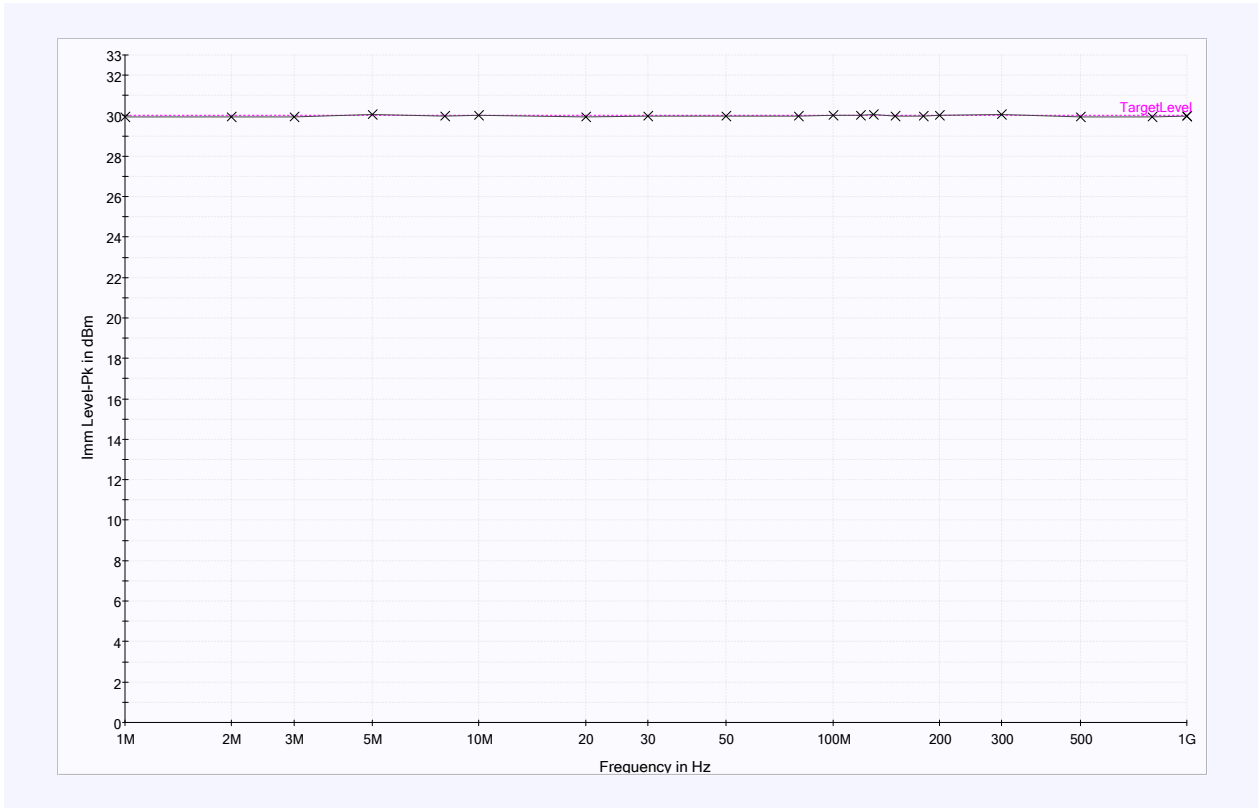


Figure 5, IGN, CW

## 8.4 IGN, AM

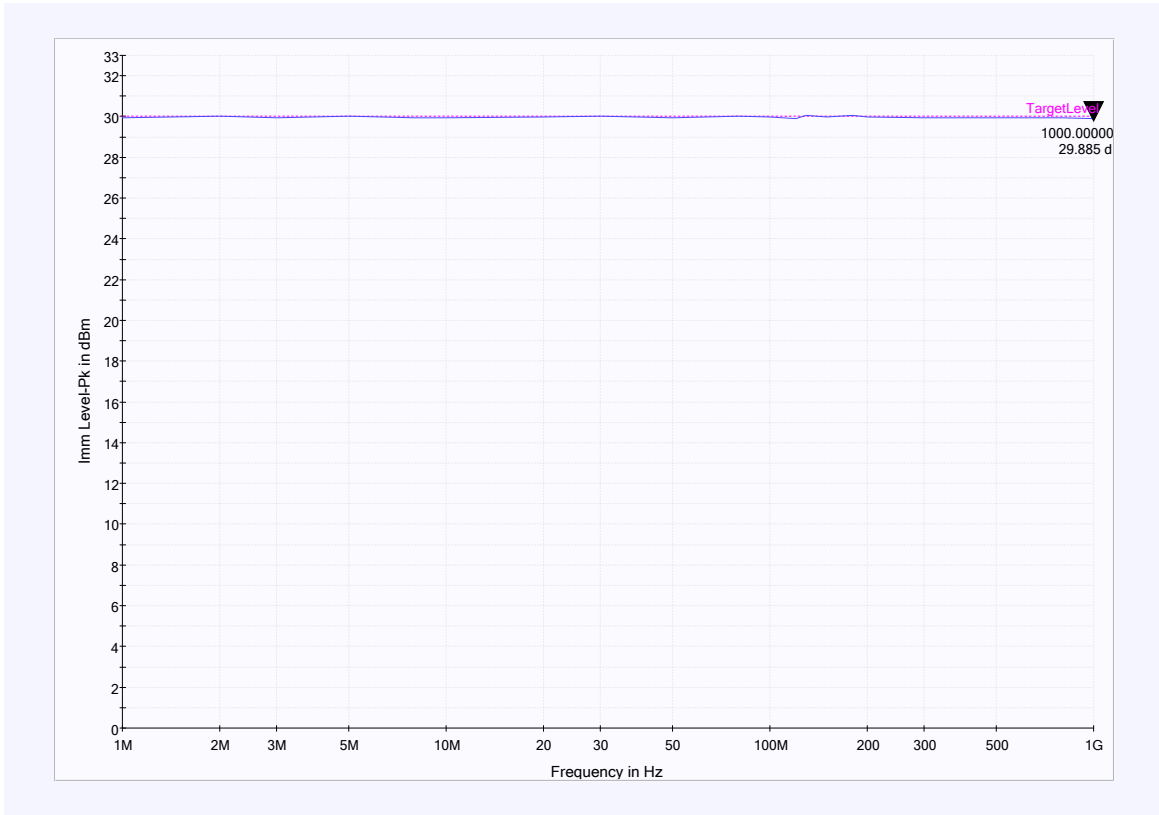


Figure 6, IGN, AM

### 8.5 VSOUT1, CW

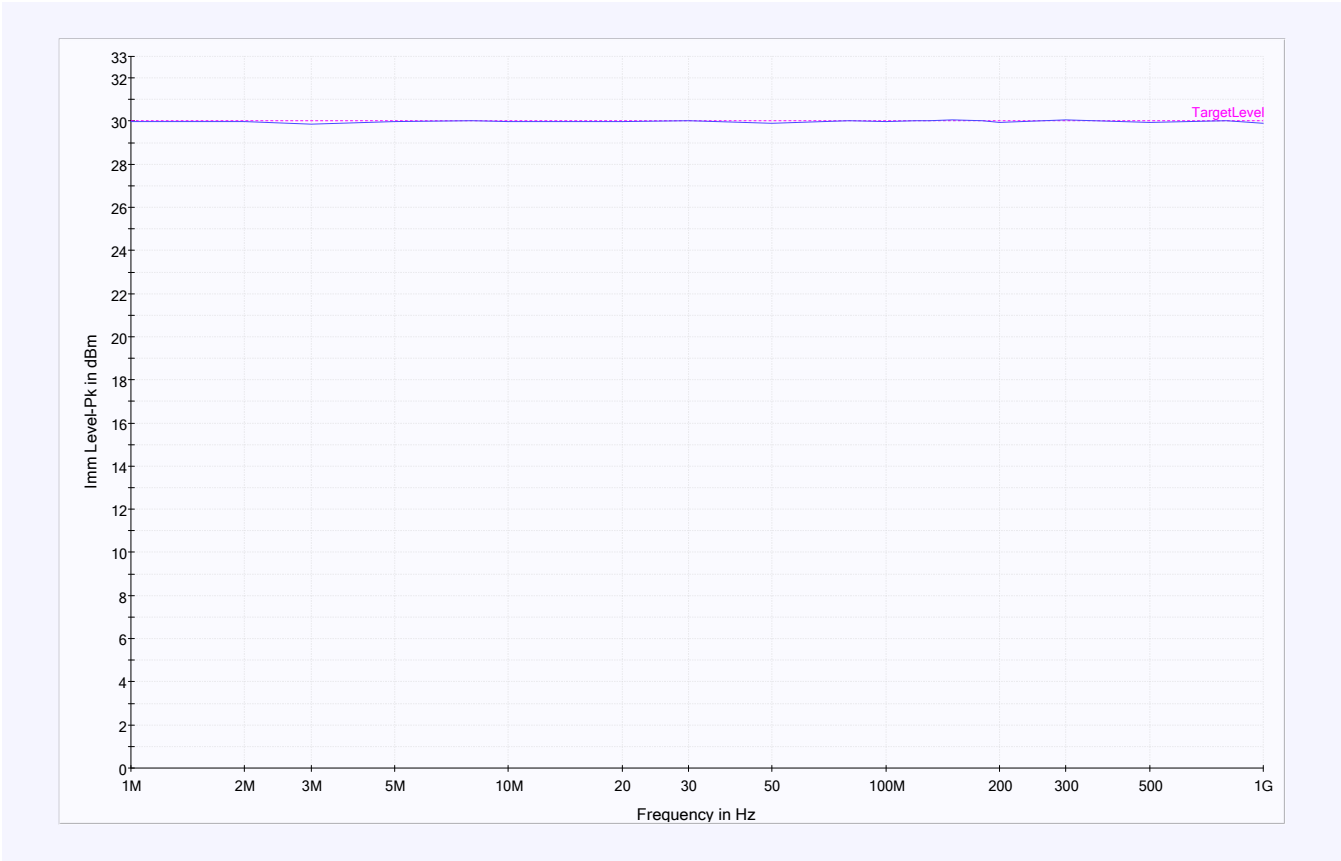


Figure 7, VSOUT1, CW

## 8.6 VSOUT1, AM

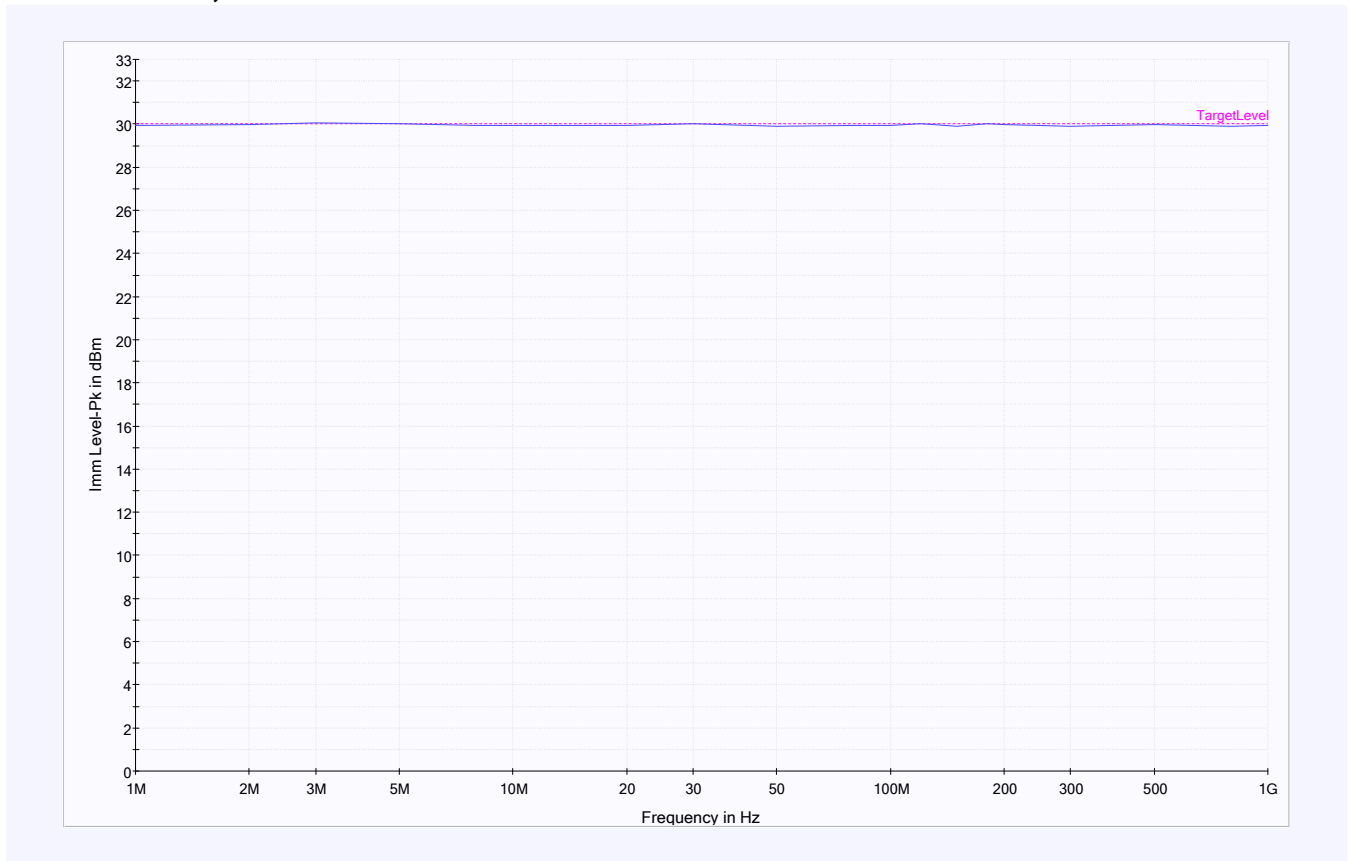


Figure 8, VSOUT1, AM

### 8.7 VBATP+VBAT\_SAFING, no load, CW

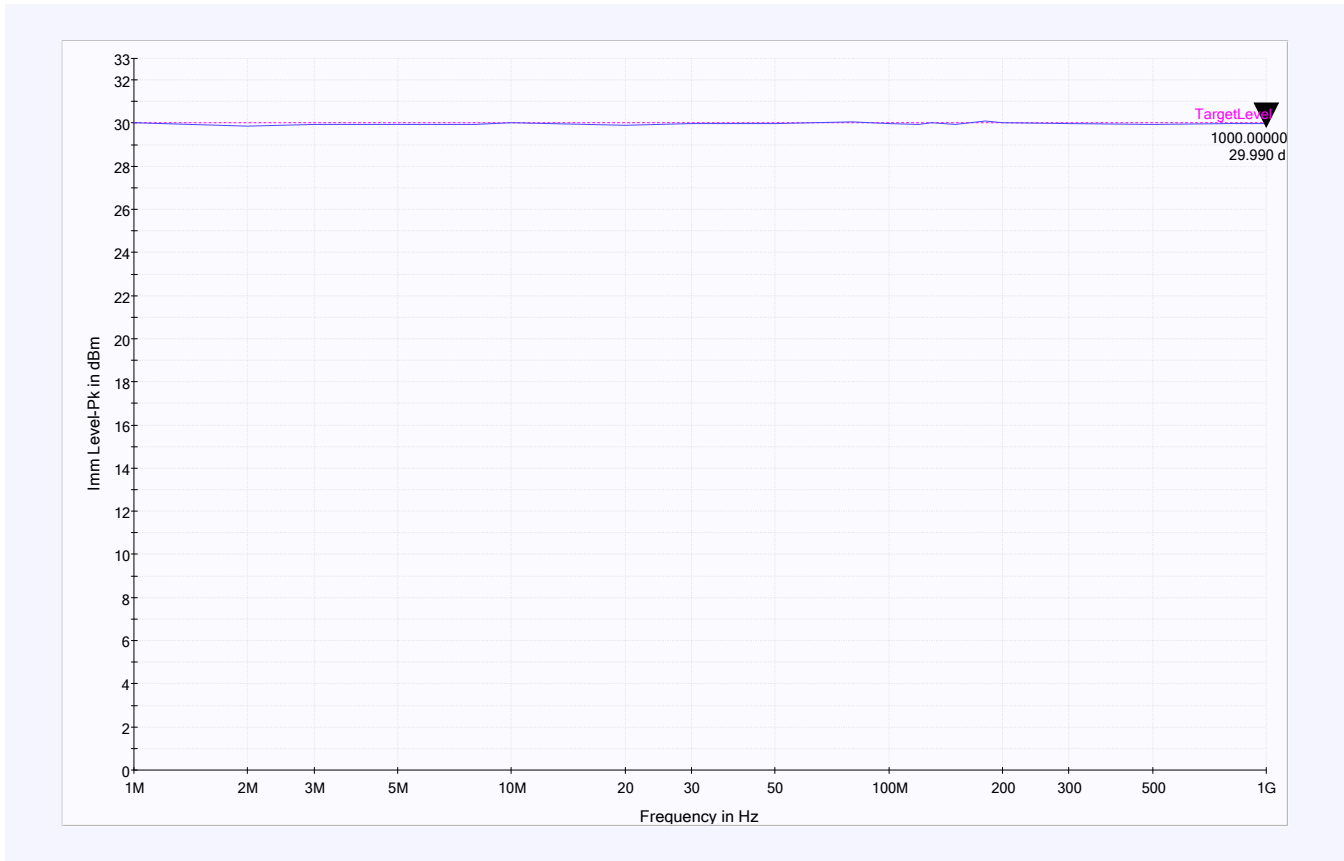
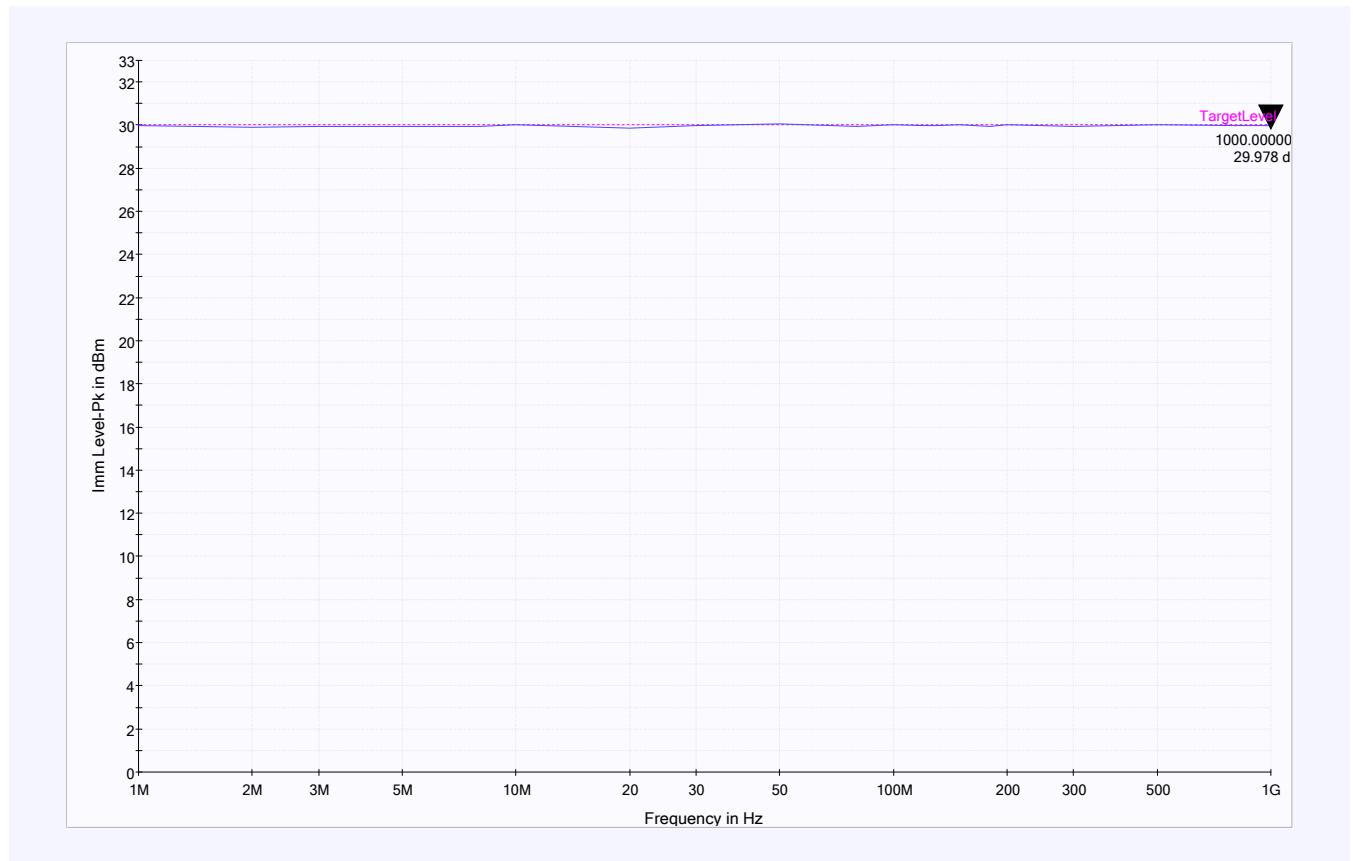


Figure 9, VBAT+VBAT\_SAFING, no load, CW

## 8.8 VBATP+VBAT\_SAFING+add. Cap, no load, AM



**Figure 10, VBATP+VBAT\_SAFING, no load, AM**

## 9 DPI Test Summary

- DPI Tests global pins
  - With typical load and no external load conditions the device can withstand DPI at global pins up to 30dBm in frequency range from 1MHz to 1GHz without any observed influence to functionality.

## IMPORTANT NOTICE

Texas Instruments Incorporated and its subsidiaries (TI) reserve the right to make corrections, enhancements, improvements and other changes to its semiconductor products and services per JESD46, latest issue, and to discontinue any product or service per JESD48, latest issue. Buyers should obtain the latest relevant information before placing orders and should verify that such information is current and complete. All semiconductor products (also referred to herein as "components") are sold subject to TI's terms and conditions of sale supplied at the time of order acknowledgment.

TI warrants performance of its components to the specifications applicable at the time of sale, in accordance with the warranty in TI's terms and conditions of sale of semiconductor products. Testing and other quality control techniques are used to the extent TI deems necessary to support this warranty. Except where mandated by applicable law, testing of all parameters of each component is not necessarily performed.

TI assumes no liability for applications assistance or the design of Buyers' products. Buyers are responsible for their products and applications using TI components. To minimize the risks associated with Buyers' products and applications, Buyers should provide adequate design and operating safeguards.

TI does not warrant or represent that any license, either express or implied, is granted under any patent right, copyright, mask work right, or other intellectual property right relating to any combination, machine, or process in which TI components or services are used. Information published by TI regarding third-party products or services does not constitute a license to use such products or services or a warranty or endorsement thereof. Use of such information may require a license from a third party under the patents or other intellectual property of the third party, or a license from TI under the patents or other intellectual property of TI.

Reproduction of significant portions of TI information in TI data books or data sheets is permissible only if reproduction is without alteration and is accompanied by all associated warranties, conditions, limitations, and notices. TI is not responsible or liable for such altered documentation. Information of third parties may be subject to additional restrictions.

Resale of TI components or services with statements different from or beyond the parameters stated by TI for that component or service voids all express and any implied warranties for the associated TI component or service and is an unfair and deceptive business practice. TI is not responsible or liable for any such statements.

Buyer acknowledges and agrees that it is solely responsible for compliance with all legal, regulatory and safety-related requirements concerning its products, and any use of TI components in its applications, notwithstanding any applications-related information or support that may be provided by TI. Buyer represents and agrees that it has all the necessary expertise to create and implement safeguards which anticipate dangerous consequences of failures, monitor failures and their consequences, lessen the likelihood of failures that might cause harm and take appropriate remedial actions. Buyer will fully indemnify TI and its representatives against any damages arising out of the use of any TI components in safety-critical applications.

In some cases, TI components may be promoted specifically to facilitate safety-related applications. With such components, TI's goal is to help enable customers to design and create their own end-product solutions that meet applicable functional safety standards and requirements. Nonetheless, such components are subject to these terms.

No TI components are authorized for use in FDA Class III (or similar life-critical medical equipment) unless authorized officers of the parties have executed a special agreement specifically governing such use.

Only those TI components which TI has specifically designated as military grade or "enhanced plastic" are designed and intended for use in military/aerospace applications or environments. Buyer acknowledges and agrees that any military or aerospace use of TI components which have **not** been so designated is solely at the Buyer's risk, and that Buyer is solely responsible for compliance with all legal and regulatory requirements in connection with such use.

TI has specifically designated certain components as meeting ISO/TS16949 requirements, mainly for automotive use. In any case of use of non-designated products, TI will not be responsible for any failure to meet ISO/TS16949.

### Products

Audio	<a href="http://www.ti.com/audio">www.ti.com/audio</a>
Amplifiers	<a href="http://amplifier.ti.com">amplifier.ti.com</a>
Data Converters	<a href="http://dataconverter.ti.com">dataconverter.ti.com</a>
DLP® Products	<a href="http://www.dlp.com">www.dlp.com</a>
DSP	<a href="http://dsp.ti.com">dsp.ti.com</a>
Clocks and Timers	<a href="http://www.ti.com/clocks">www.ti.com/clocks</a>
Interface	<a href="http://interface.ti.com">interface.ti.com</a>
Logic	<a href="http://logic.ti.com">logic.ti.com</a>
Power Mgmt	<a href="http://power.ti.com">power.ti.com</a>
Microcontrollers	<a href="http://microcontroller.ti.com">microcontroller.ti.com</a>
RFID	<a href="http://www.ti-rfid.com">www.ti-rfid.com</a>
OMAP Applications Processors	<a href="http://www.ti.com/omap">www.ti.com/omap</a>
Wireless Connectivity	<a href="http://www.ti.com/wirelessconnectivity">www.ti.com/wirelessconnectivity</a>

### Applications

Automotive and Transportation	<a href="http://www.ti.com/automotive">www.ti.com/automotive</a>
Communications and Telecom	<a href="http://www.ti.com/communications">www.ti.com/communications</a>
Computers and Peripherals	<a href="http://www.ti.com/computers">www.ti.com/computers</a>
Consumer Electronics	<a href="http://www.ti.com/consumer-apps">www.ti.com/consumer-apps</a>
Energy and Lighting	<a href="http://www.ti.com/energy">www.ti.com/energy</a>
Industrial	<a href="http://www.ti.com/industrial">www.ti.com/industrial</a>
Medical	<a href="http://www.ti.com/medical">www.ti.com/medical</a>
Security	<a href="http://www.ti.com/security">www.ti.com/security</a>
Space, Avionics and Defense	<a href="http://www.ti.com/space-avionics-defense">www.ti.com/space-avionics-defense</a>
Video and Imaging	<a href="http://www.ti.com/video">www.ti.com/video</a>

### TI E2E Community

[e2e.ti.com](http://e2e.ti.com)