

Lead-Acid Charger and LED Driver using TPS5402

Aditya Ambardar

ABSTRACT

The TPS5402 device is a non-synchronous buck regulator with a wide operating range from 3.5 to 28 V. The switching frequency of the converters can be set from 50 kHz to 1.1 MHz with an external resistor. Frequency-spread spectrum operation is introduced for EMI reduction. TPS5402 supports pulse-skipping mode to enhance the efficiency at light load, making this device an ideal pick for applications where efficiencies at full load and light loads are a key concern.

This application note focuses on applications beyond the fixed voltage operation of the device, with modification on the standard EVM board available for the part.

Two applications are demonstrated using the TPS5402 device:

1. Lead-acid battery charger
2. LED driver

Design is focused on simple methods to convert a constant voltage supply to constant current supply using the TPS5402.

Contents

1	Lead-Acid Battery Charger	2
	1.1 Modifications to the EVM: Feedback Loop	2
	1.2 Constant Current – Constant Voltage Charger	4
	1.3 Results	6
2	LED Driver Design	7
	2.1 Feedback Section	7
	2.2 Results	8
3	Conclusion	8
4	References	8

List of Figures

1	Linear Current Tapering Charger Using TPS5402	2
2	Charger Current, Current Sense Voltage and Feedback Voltage vs. V_{OUT} (Battery Voltage)	3
3	Linear Current Tapering Feedback Section	3
4	Constant Current and Constant Voltage Charger Implementation using TPS5402	4
5	Constant Current and Constant Voltage Charger Feedback Section	5
6	Feedback Pin Voltage Change vs. Charge Current, Showing 800 mV at 1.48 A	5
7	Feedback Voltage vs. Battery Voltage	6
8	Low Loss Implementation of Reverse Battery Connection Circuit using MOSFET	6
9	Bench Result of Charge Current vs. Battery Voltage using EVM Modification of TPS5402	6
10	Efficiency Plot vs. Charge Current using EVM Modification of TPS5402	6
11	Simple LED Driver Implementation using TPS5402	7
12	Efficiency vs. Input Voltage for LED Driver using TPS5402	8

1 Lead-Acid Battery Charger

The TPS5402 device is used to charge the lead-acid batteries. Lead-acid batteries follow three stages of charging: constant current, constant voltage (current tappers), and trickle.

With the TPS5402 device, a simple circuit is implemented to charge a lead-acid battery in constant current and constant voltage mode. This circuit is designed to efficiently charge the small lead-acid-battery chargers, which require charge currents up to 1.7 A. Two topologies of battery charging are discussed below:

1. Linear current-tapering charger – lowest cost
2. Constant current – constant voltage charger

Specifications:

A 12-V lead-acid battery is used to test the design. The charger was designed considering the minimum changes required on the standard TPS5402 EVM for the following specifications:

1. Battery charge voltage: 14.6 V
2. Charge current peak: 1.5 A
3. Input voltage: 16 – 28 V_{max}
4. Switching frequency: 270 kHz

Design:

The TPS5402 has an on-board resistance of 100 kΩ at R_{osc} pin, which sets the frequency at 270 kHz. Set the jumper to this option.

Below are the quick calculations for the minimum inductor value. For a detailed discussion on power stage design, refer to the TPS5402 datasheet ([SLVSBK4](#)).

$$L_{\min} = \frac{V_{\text{OUT}} \times (V_{\text{IN(max)}} - V_{\text{OUT}})}{V_{\text{IN(max)}} \times I_{\text{Lripple\%}} \times I_{\text{OUT}} \times f_{\text{SW}}} \quad (1)$$

The $I_{\text{Lripple\%}}$ for this application is 0.3 – 0.4, $I_{\text{OUT}} = 1.5$ A, and the minimum inductor is around 76 μH. The EVM has 82 μH which is sufficient for this design; the 82 μH creates lower ripple current than calculated in the inductor.

Input capacitor and output capacitor selection were done using the equations in datasheet, and resulted in component values close to the values present on the EVM.

1.1 Modifications to the EVM: Feedback Loop

Linear Current Tapering Charger – Lowest Cost

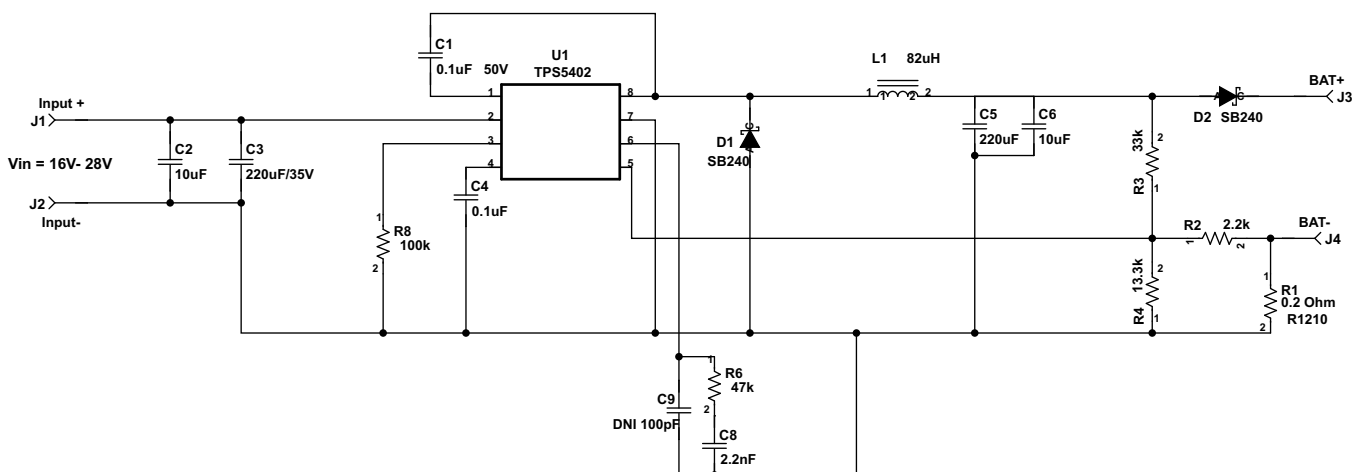


Figure 1. Linear Current Tapering Charger Using TPS5402

The circuit in Figure 1 shows a simple implementation of a battery charger. The charge current tapers off as the battery voltage increases. Diode D2 protects the circuit in case the battery terminals are connected in reverse and it reduces any leakage current from the battery to the circuit.

Resistance R3 and R4||R2 are designed for the maximum output voltage of 14.6 V, eventually charging the battery to 14.3 V.

The V_{fb} voltage due to the battery voltage and the current-sense voltage is plotted in the graph below (see Figure 2).

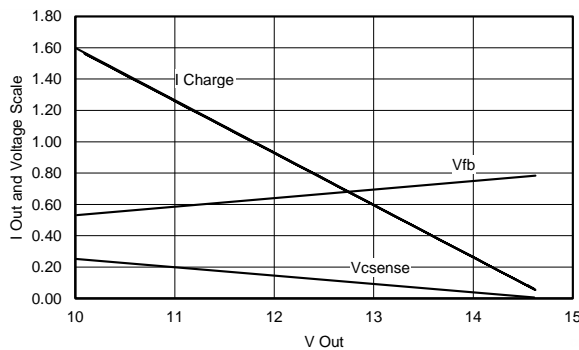


Figure 2. Charger Current, Current Sense Voltage and Feedback Voltage vs. V_{OUT} (Battery Voltage)

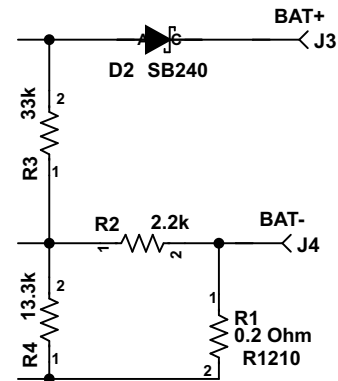


Figure 3. Linear Current Tapering Feedback Section

For an output voltage of 14.6 V and reference voltage of 0.8 V, choose $R3 = 33 \text{ k}\Omega$ and $R4||R2 = 1.88 \text{ k}\Omega$.

Applying Kirchoff's law, voltage at V_{fb} node, the voltage across the R4 is actually given by Equation 2.

$$V_{R4} = \frac{14.6 \times R4R2}{R3R4 + R2R4 + R2R3} + \frac{V_{R1} \times R3R4}{R3R4 + R2R4 + R2R3} \quad (2)$$

Choosing the voltage divide ratio of about 0.8 for the current sense voltage across R1, solving for the second part of the equation, the results are:

$$R2 = 1.88\text{k} / 0.8 = 2.35 \text{ k}\Omega, \text{ choose } 2.2 \text{ k}\Omega$$

$$R4 = 12.9 \text{ k}\Omega, \text{ choose } 13 \text{ k}\Omega \quad (3)$$

Current sense is calculated at a 12-V charging voltage or the user can choose the maximum current from the converter at the worst-case battery voltage. This topology is best suited for applications where the user cuts off the battery from the system well in advance, before the battery enters deep discharge voltages of 9 V or below, or where the user wants to charge the battery at lower currents and at a higher battery voltage, thus allowing a maximum current of about 1.7 A at 9 V. The worst-case battery voltage of 10.3 V, is assumed in this application note so:

$$R1 = \frac{\left[V_{ref} - \left(10 \text{ V} \times \frac{R4 || R2}{R4 || R2 + R3} \right) \right]}{0.8 \times 1.7}$$

- $R1 = 0.19 \Omega \sim 0.2 \Omega$ (4)

Where $V_{ref} = 0.8 \text{ V}$ feedback reference of TPS5402, 10 V is used in calculation, considering the 300-mV drop of diode.

The above implementation ensures that feedback gets the appropriate offset voltage at 10.3-V battery voltage, and does not overload the converter. A more rugged solution is discussed in Section 1.2.

1.2 Constant Current – Constant Voltage Charger

An offset to current-sense feedback is actually derived from a fixed reference voltage. Because the reference voltage is set, the output voltage or battery voltage has no effect on the peak charging current of the battery. The design is implemented with the consideration that the current tapers off or begins to taper off before the battery voltage reaches approximately 13.4 V.

The schematic in Figure 4 shows the implementation of the constant current and constant voltage charger.

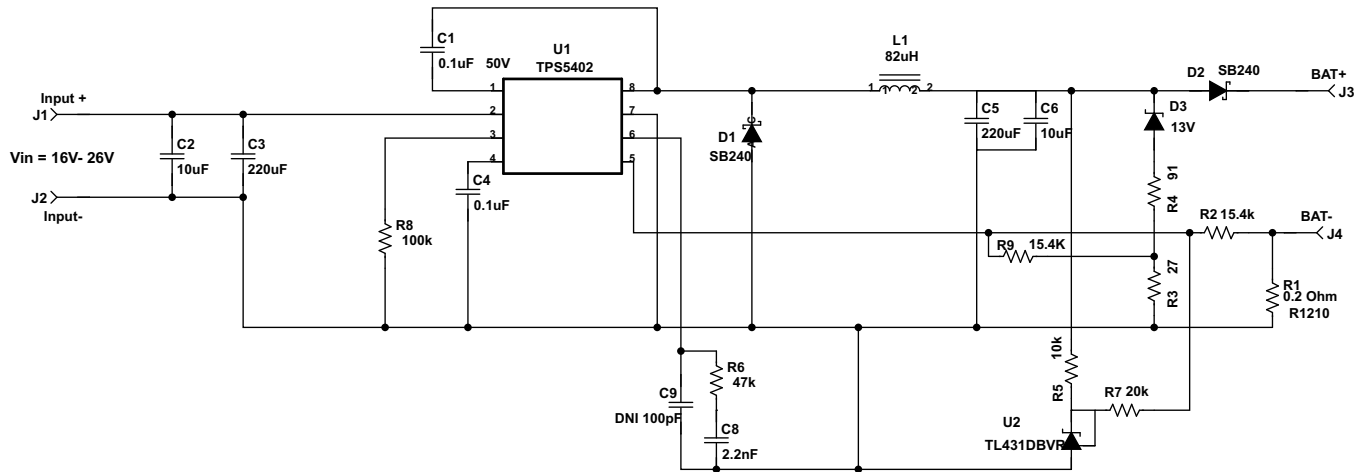


Figure 4. Constant Current and Constant Voltage Charger Implementation using TPS5402

Power stage components remain the same as in the previously discussed design. Note only the feedback section is changed to keep the charge current independent of the battery voltage. The main purpose of this change is to incorporate an external reference to keep the current sense resistance low and improve the efficiency of the circuit.

The feedback consists of two components: a feedback-pin offset circuit consisting of the TL431 device for current sense, and an overvoltage circuit consisting of Zener D3, R4 and R3. Equation 5 calculates the feedback voltage, as seen on pin 5, which is compared to the internal 0.8 V used to regulate the power stage.

$$V_{fb} = \frac{2.5 \times R9R2}{R9R2 + R9R7 + R7R2} + \frac{V_{R1} \times R9R7}{R9R2 + R9R7 + R7R2} + \frac{V_{R3} \times R2R7}{R9R2 + R9R7 + R7R2} \text{ Volts} \quad (5)$$

Note that the TL431 device reference voltage is 2.5 V, the voltage across the current sense resistor is V_{R1} and is the voltage used for the overvoltage or constant voltage feedback is V_{R3} . Equation 5 is written assuming $R9 \gg R3$ and $R2 \gg R1$, which in this case always holds true.

The first part of the equation is set so that 0.7 V is added through the TL431 device as shown in Equation 6.

$$\frac{2.5 \times R9R2}{R9R2 + R9R7 + R7R2} = 0.7 \text{ V} \quad (6)$$

To design a sensing part, the user must watch for a momentary short of the Bat+ terminal at the current sense resistors. This short creates a momentary surge at the sense pin. To keep the surge within limits choose $R2 = R9$, creating approximately less than 0.4 ratio and simplifying Equation 3.

Choosing $R7 = 20 \text{ k}\Omega$, $R2 = R9 = 15.55 \text{ k}\Omega$, and choosing a standard value of 15.4 kΩ, results in a correct value of Equation 4 at approximately 0.694 (see Equation 7).

$$\frac{V_{R3} \times R2R7}{R9R2 + R9R7 + R7R2} = V_{R1} \times 0.361 = V_{ref} - 0.694 \quad (7)$$

(from Equation 6)

Note that V_{R3} is not considered at this stage because it adds voltage only after the Zener starts conducting.

$$V_{R1} = 0.293 \text{ V}$$

Now designing for I_{OUT} of 1.5 A, $R_1 = 0.195 \Omega$. Choose a standard value resistance of 0.2 Ω . The graph in Figure 6 shows the variation of the feedback voltage with the current through the sense resistor.

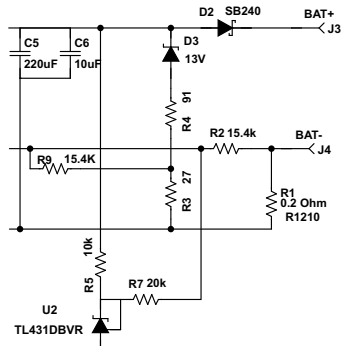


Figure 5. Constant Current and Constant Voltage Charger Feedback Section

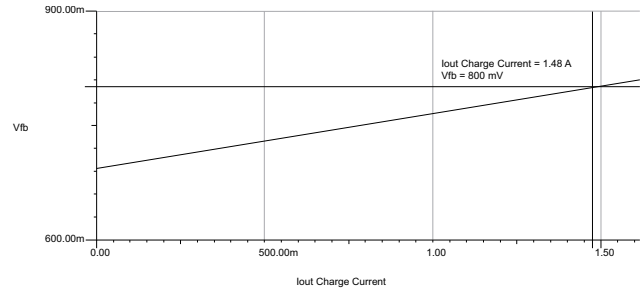


Figure 6. Feedback Pin Voltage Change vs. Charge Current, Showing 800 mV at 1.48 A

For the output constant voltage section, use the Zener diode D3 of 13 V. The purpose is to measure 14.3 V across the battery and add the remaining 0.1 V to the feedback voltage, just like in the current sense section (see Equation 8).

$$\frac{V_{R3} \times R2R7}{R9R2 + R9R7 + R7R2} = V_{R1} \times 0.361 = V_{ref} - 0.694$$

(from Equation 6)

- $V_{R3} = 0.293 \text{ V}$ at 14.3 V (8)

The Zener diode 13-V current for this calculation is around 11 mA as implied in Equation 9.

$$\frac{V_{bat} - V_{zener}}{R4 + R3} = 11 \text{ mA} \Rightarrow R4 + R3 = 118 \Omega$$

where

- $R3 = 0.293 / 0.01 = 26.6 \Omega$, choosing 27 Ω , $R4 = 91 \Omega$ (9)

The following relationship between V_{fb} and battery voltage is shown in [Figure 7](#).

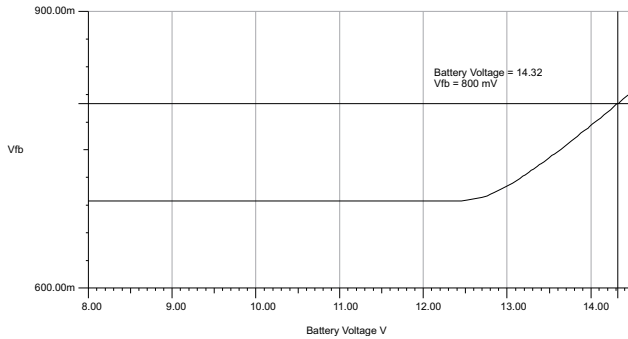


Figure 7. Feedback Voltage vs. Battery Voltage

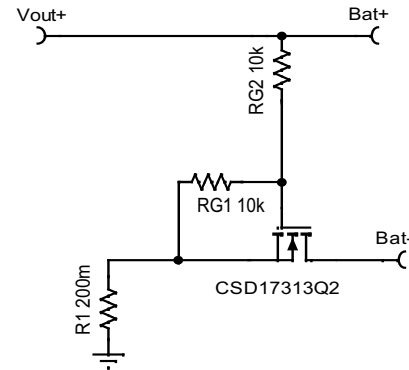


Figure 8. Low Loss Implementation of Reverse Battery Connection Circuit using MOSFET

The user is able to also remove the D2 and use a MOSFET in the configuration shown in [Figure 8](#) to improve efficiency. A lower R_{dson} MOSFET ensures better efficiencies at higher charge currents.

1.3 Results

The circuit was tested in the lab with a slight modification to charge the battery to 14.8 V. A lower Zener voltage of 13.3 V causes the current to taper early at approximately 12 V (see [Figure 7](#)). This taper voltage changes by using a Zener voltage close to the cut-off voltage and choosing the R4 and R3 resistance according to [Equation 9](#).

[Figure 9](#) shows the constant-current behavior of the design, and that the current reaches zero when the battery charges to 14.8 V.

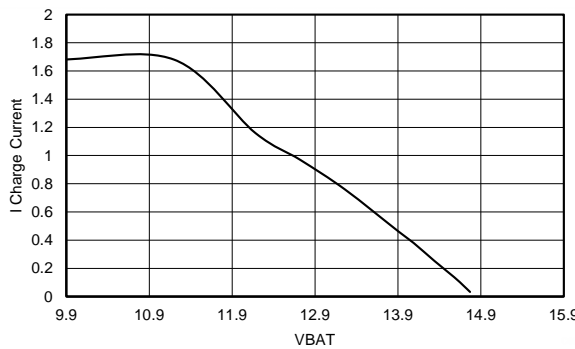


Figure 9. Bench Result of Charge Current vs. Battery Voltage using EVM Modification of TPS5402

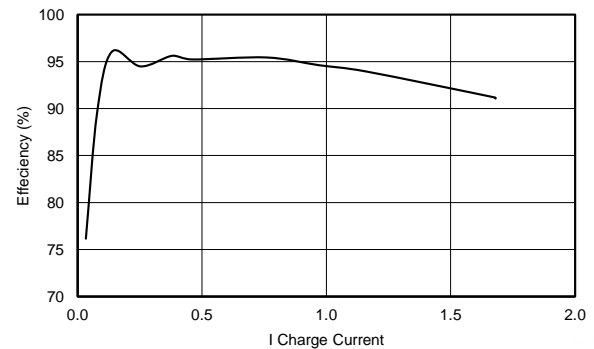


Figure 10. Efficiency Plot vs. Charge Current using EVM Modification of TPS5402

Efficiency measurements were performed at 16-V input voltage and at the battery terminals before the D2 diode, so diode power loss was not considered (see [Figure 10](#)). The efficiency stayed above 91% throughout the operation, mostly at 95%, until the battery entered a sub 100-mA charge current range, where the efficiency was measured at 86% with a 70-mA charge current.

2 LED Driver Design

The TPS5402 device, as discussed in the above battery charge configuration, is used in the below configuration to drive LEDs.

A simple LED-driver design is designed with the specifications below:

1. LED voltage 3.3-V LEDs and three in series: 9.9 V
2. LED current : 0.5 A
3. Input voltage: 10 – 28 V_{max}
4. Switching frequency: 270 kHz

Again, with minimum changes to the EVM and using Equation 1: L = 150 μH. The inductor is unchanged at 82 μH, which results in higher ripple current in the inductor. Note that for improved performance, change the inductor for the reference design on the board.

Keeping the power section the same without changing the input, output capacitors, and compensation values, the schematic is shown in Figure 11.

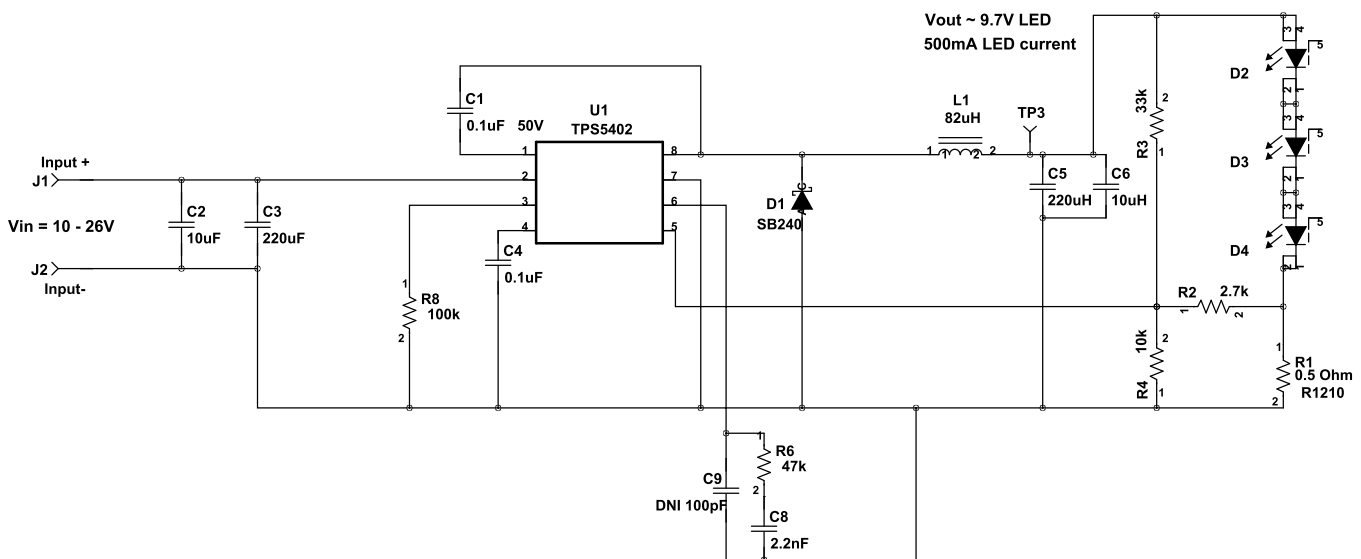


Figure 11. Simple LED Driver Implementation using TPS5402

2.1 Feedback Section

For feedback design, use Equation 2, and change the values of output voltage to 9 V:

$$V_{R4} = \frac{9.9 \times R4R2}{R3R4 + R2R4 + R2R3} + \frac{V_{R1} \times R3R4}{R3R4 + R2R4 + R2R3} \quad (10)$$

Choose a reference offset from output around 0.6 V:

$$\frac{9.9 \times R4R2}{R3R4 + R2R4 + R2R3} = 0.6 \quad (11)$$

Using R3 = 33 kΩ, and using R4 || R2 as a standard value of 2.13 kΩ.

Keeping the ratio R2 / (R2 + R4) = 0.8 (approximately) in calculations, to create a smaller sense resistance and to lower the conduction loss, use R4 = 10 kΩ, and R2 = 2.7 kΩ as standard values. The actual ratio value is given by Equation 9, resulting in Equation 12.

$$V_{R1} = \frac{(0.8 - 0.6) \times (R3R4 + R2R4 + R2R3)}{R3R4} = 0.263 \text{ V} = I_{\text{led}} \times R1 \quad (12)$$

Solving for a 0.5-A current, R1 = 0.526 Ω, choose R1 = 0.5 Ω.

Because the switch current for the internal MOSFET of the TPS5402 device is 2.2 A, the user can design LED drivers up to 1.7-A of continuous current for specific input and output voltages.

2.2 Results

The efficiency versus input voltage for the schematic in [Figure 11](#) is shown in [Figure 12](#).

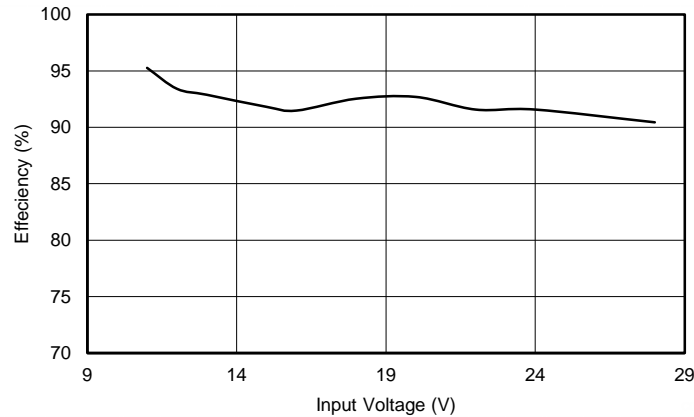


Figure 12. Efficiency vs. Input Voltage for LED Driver using TPS5402

The efficiency for the design is above 90% at a higher voltage of 28 V, and at a lower voltage of 10 V, the efficiency is approximately 93%.

3 Conclusion

The TPS5402 device works in constant current for lead-acid-charging and LED-driver applications. The methods to achieve high efficiencies by altering the feedback sections are discussed in this application note. As observed in this application note, the TPS5402 device shows high efficiency characteristics.

4 References

1. TPS5402 Data Sheet ([SLVSBK4](#))
2. TPS5402 EVM User's Guide ([SLVU775](#))
3. *Understanding Buck Power Stages in Switch Mode Power Supplier* ([SLVA057](#))

IMPORTANT NOTICE

Texas Instruments Incorporated and its subsidiaries (TI) reserve the right to make corrections, enhancements, improvements and other changes to its semiconductor products and services per JESD46, latest issue, and to discontinue any product or service per JESD48, latest issue. Buyers should obtain the latest relevant information before placing orders and should verify that such information is current and complete. All semiconductor products (also referred to herein as "components") are sold subject to TI's terms and conditions of sale supplied at the time of order acknowledgment.

TI warrants performance of its components to the specifications applicable at the time of sale, in accordance with the warranty in TI's terms and conditions of sale of semiconductor products. Testing and other quality control techniques are used to the extent TI deems necessary to support this warranty. Except where mandated by applicable law, testing of all parameters of each component is not necessarily performed.

TI assumes no liability for applications assistance or the design of Buyers' products. Buyers are responsible for their products and applications using TI components. To minimize the risks associated with Buyers' products and applications, Buyers should provide adequate design and operating safeguards.

TI does not warrant or represent that any license, either express or implied, is granted under any patent right, copyright, mask work right, or other intellectual property right relating to any combination, machine, or process in which TI components or services are used. Information published by TI regarding third-party products or services does not constitute a license to use such products or services or a warranty or endorsement thereof. Use of such information may require a license from a third party under the patents or other intellectual property of the third party, or a license from TI under the patents or other intellectual property of TI.

Reproduction of significant portions of TI information in TI data books or data sheets is permissible only if reproduction is without alteration and is accompanied by all associated warranties, conditions, limitations, and notices. TI is not responsible or liable for such altered documentation. Information of third parties may be subject to additional restrictions.

Resale of TI components or services with statements different from or beyond the parameters stated by TI for that component or service voids all express and any implied warranties for the associated TI component or service and is an unfair and deceptive business practice. TI is not responsible or liable for any such statements.

Buyer acknowledges and agrees that it is solely responsible for compliance with all legal, regulatory and safety-related requirements concerning its products, and any use of TI components in its applications, notwithstanding any applications-related information or support that may be provided by TI. Buyer represents and agrees that it has all the necessary expertise to create and implement safeguards which anticipate dangerous consequences of failures, monitor failures and their consequences, lessen the likelihood of failures that might cause harm and take appropriate remedial actions. Buyer will fully indemnify TI and its representatives against any damages arising out of the use of any TI components in safety-critical applications.

In some cases, TI components may be promoted specifically to facilitate safety-related applications. With such components, TI's goal is to help enable customers to design and create their own end-product solutions that meet applicable functional safety standards and requirements. Nonetheless, such components are subject to these terms.

No TI components are authorized for use in FDA Class III (or similar life-critical medical equipment) unless authorized officers of the parties have executed a special agreement specifically governing such use.

Only those TI components which TI has specifically designated as military grade or "enhanced plastic" are designed and intended for use in military/aerospace applications or environments. Buyer acknowledges and agrees that any military or aerospace use of TI components which have **not** been so designated is solely at the Buyer's risk, and that Buyer is solely responsible for compliance with all legal and regulatory requirements in connection with such use.

TI has specifically designated certain components as meeting ISO/TS16949 requirements, mainly for automotive use. In any case of use of non-designated products, TI will not be responsible for any failure to meet ISO/TS16949.

Products

Audio	www.ti.com/audio
Amplifiers	amplifier.ti.com
Data Converters	dataconverter.ti.com
DLP® Products	www.dlp.com
DSP	dsp.ti.com
Clocks and Timers	www.ti.com/clocks
Interface	interface.ti.com
Logic	logic.ti.com
Power Mgmt	power.ti.com
Microcontrollers	microcontroller.ti.com
RFID	www.ti-rfid.com
OMAP Applications Processors	www.ti.com/omap
Wireless Connectivity	www.ti.com/wirelessconnectivity

Applications

Automotive and Transportation	www.ti.com/automotive
Communications and Telecom	www.ti.com/communications
Computers and Peripherals	www.ti.com/computers
Consumer Electronics	www.ti.com/consumer-apps
Energy and Lighting	www.ti.com/energy
Industrial	www.ti.com/industrial
Medical	www.ti.com/medical
Security	www.ti.com/security
Space, Avionics and Defense	www.ti.com/space-avionics-defense
Video and Imaging	www.ti.com/video

TI E2E Community

e2e.ti.com