



The push for smart peripherals and autonomous driving is ever present with increasing electrification in the automotive industry. With that, the complexity and robustness of the advanced driver assistance systems (ADAS) have also greatly increased. One of the key focus areas in ADAS is front camera modules. Camera modules, specifically the front cameras, are crucial to the system as they take in video data and interpret information such as stop signs, people, and other cars. However, accurate turn on and turn off control of these modules increases overall system efficiency including monitoring and mitigating different faults such as short to battery, open load. Powering of these front camera modules is typically done using a smart high side switch similar to TPS1HC100-Q1.

Camera Modules



Figure 1. Camera Application

Camera modules are typically electronic control units (ECU) that are powered from the car battery or another control module with on board DC/DC's. These modules have microcontrollers for the digital processing along with a defogger (heater) for when the camera gets fogged up and diagnostics and or monitoring to make sure the signal coming in is correct. Typically it is a smart high side switch that delivers power to camera modules from other upstream power distribution blocks and or modules. Additionally, on these camera modules, a smart high side switch would be used to power on and off the defogger. Both of these loads (the full module and the defogger) have distinct challenges associated with driving them.

Driving Front Camera Modules (Capacitive Loads)

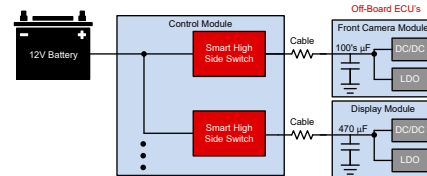


Figure 2. Sample Vehicle Architecture

The full camera module has DC/DC's and or LDO's powering other circuitry on the board. These DC/DC's and LDO's have a typical current draw of $\leq 2A$ but have large input capacitors which can result in high inrush current spikes when turning on the module. These capacitance's are in the 100's μF range that, if not regulated, would pull $>30A$ until the voltage on the capacitor was charged up.

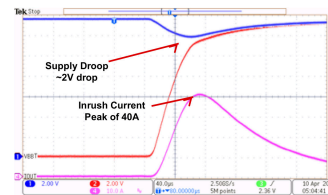


Figure 3. Unregulated Inrush Current Charging a 330 μF Capacitor

TPS1HC100-Q1 Driving Front Camera Modules

TI's TPS1HC100-Q1 is a single-channel smart high-side switch with adjustable current limiting that can enable robust protection of the front camera module. The current limit is set externally by a resistor (or internally by leaving the pin floating or shorted to ground) and follows the KCL ratio to determine the value that it will regulate the output current. Additionally, adding a resistor in parallel through a switch can turn the static current limit, into a dynamic one.

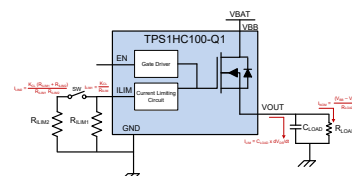


Figure 4. Dynamic Current Limit with TPS1HC100-Q1

When the system turns the TPS1HC100-Q1 on, the SW switch in the picture above is closed causing the effective resistance at the ILIM pin to be reduced thereby making the current limit higher. Then, after the output is charged up, the SW can be disabled causing the effective resistance at the ILIM pin to increase and setting the current limit threshold to a lower value that is near the nominal load current. This timing is shown in Figure 5.

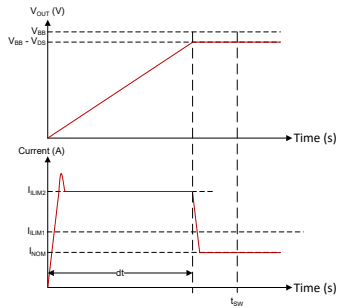


Figure 5. Dynamic Current Limiting Waveform

For additional general information about driving capacitive loads with smart high side switches, please see [SLVAF30](#) application report.

Driving Defoggers (Resistive Loads)

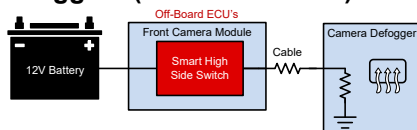


Figure 6. Camera Defogger Application

Defoggers in the camera module can be thought of as heaters or resistive loads. These heaters are turned on to remove the condensation on the cameras so they can have a more clear image. The key careabouts when driving heaters is to have great short circuit protection and accurate current sensing. The short circuit protection protects the system as a whole, including the cables, from seeing high currents during the short circuit event. The current sensing is necessary because the current through the heater load is directly proportional to the heat. This current must be accurately monitored by the system if the temperature is required. Additionally, diagnostics must be done on the sense line that goes into the ADC of the microcontroller on the camera module.

TPS1HC100-Q1 Driving Camera Defoggers

Similar to the capacitive inrush current clamping, the excellent current limiting feature of TPS1HC100-Q1 will once again protect the system during a short circuit event. The output current will be limited to the value set by the current limiting resistor. Additionally, the TPS1HC100-Q1 has accurate current sensing that can reliably sense down to 5mA which is enough to determine if there is an open load condition and only gets more accurate as the load current increases. However, a unique benefit of the TPS1HC100-Q1 is the ability to make sure that when there is a fault (overcurrent, thermal shutdown, open load, and so on), the maximum output voltage on the SNS pin is acceptable for the ADC into which it is going. This is possible by the fault voltage scaling done in the device that makes sure the voltage coming in from the microcontroller on DIAG_EN is the maximum voltage that the SNS pin can put out during a fault.

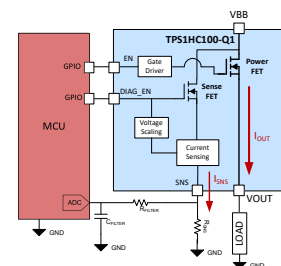


Figure 7. Current Sensing with Fault Voltage Scaling

The range for the current sense is set by the sense resistor chosen. Figure 8 is the range with user-defined head room between a fault signal and the proportional current sense output.

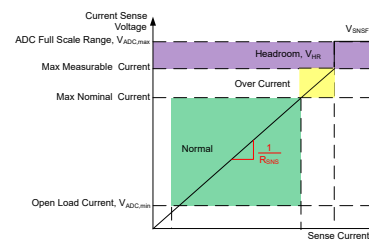


Figure 8. Current Sense Range

For a more in-depth look at this feature and all of the features of the TPS1HC100-Q1, check out the [TPS1HC100-Q1](#) data sheet.

IMPORTANT NOTICE AND DISCLAIMER

TI PROVIDES TECHNICAL AND RELIABILITY DATA (INCLUDING DATASHEETS), DESIGN RESOURCES (INCLUDING REFERENCE DESIGNS), APPLICATION OR OTHER DESIGN ADVICE, WEB TOOLS, SAFETY INFORMATION, AND OTHER RESOURCES "AS IS" AND WITH ALL FAULTS, AND DISCLAIMS ALL WARRANTIES, EXPRESS AND IMPLIED, INCLUDING WITHOUT LIMITATION ANY IMPLIED WARRANTIES OF MERCHANTABILITY, FITNESS FOR A PARTICULAR PURPOSE OR NON-INFRINGEMENT OF THIRD PARTY INTELLECTUAL PROPERTY RIGHTS.

These resources are intended for skilled developers designing with TI products. You are solely responsible for (1) selecting the appropriate TI products for your application, (2) designing, validating and testing your application, and (3) ensuring your application meets applicable standards, and any other safety, security, or other requirements. These resources are subject to change without notice. TI grants you permission to use these resources only for development of an application that uses the TI products described in the resource. Other reproduction and display of these resources is prohibited. No license is granted to any other TI intellectual property right or to any third party intellectual property right. TI disclaims responsibility for, and you will fully indemnify TI and its representatives against, any claims, damages, costs, losses, and liabilities arising out of your use of these resources.

TI's products are provided subject to TI's Terms of Sale (<https://www.ti.com/legal/termsofsale.html>) or other applicable terms available either on [ti.com](https://www.ti.com) or provided in conjunction with such TI products. TI's provision of these resources does not expand or otherwise alter TI's applicable warranties or warranty disclaimers for TI products.

Mailing Address: Texas Instruments, Post Office Box 655303, Dallas, Texas 75265
Copyright © 2021, Texas Instruments Incorporated