

OA-27 Low-Sensitivity, Lowpass Filter Design

ABSTRACT

This application report covers the design of a Sallen-Key (also called KRC or VCVS [voltage-controlled, voltage-source]) lowpass biquad with low component and op amp sensitivities. This method is valid for either voltage-feedback or current-feedback op amps. Basic techniques for evaluating filter sensitivity performance are included. A filter design example illustrates the method.

Contents

| | | |
|------------|---|----|
| 1 | Introduction | 2 |
| 2 | KRC Lowpass Biquad | 2 |
| 3 | Design Example | 5 |
| | 3.1 Overall Design | 5 |
| | 3.2 Section A Design | 6 |
| | 3.3 Section B Design | 6 |
| 4 | SPICE Models | 8 |
| 5 | Summary | 8 |
| 6 | References | 9 |
| Appendix A | Transfer Function Examples | 10 |
| Appendix B | Biquad Section, s Term in the Denominator That Includes K | 11 |

List of Figures

| | | |
|---|--------------------------------------|---|
| 1 | Lowpass Biquad..... | 2 |
| 2 | Lowpass Filter | 5 |
| 3 | Monte-Carlo Simulation Results | 8 |

1 Introduction

Changes in component values over process, environment and time affect the performance of a filter. To achieve a greater production yield, we need to make the filter insensitive to these changes. This application report presents a design algorithm that results in low sensitivity to component variation.

Lowpass biquad filter sections have the transfer function:

$$\frac{V_o}{V_{IN}} \approx \frac{H_o}{1 + (1/(\omega_p Q_p))s + (1/\omega_p^2)s^2} \quad (1)$$

where, $s=j\omega$, H_o is the DC gain, ω_p is the pole frequency, and Q_p is the pole quality factor. Both ω_p and Q_p affect the filter phase response, ω_p the filter cutoff frequency, Q_p the peaking, and H_o the gain. For these reasons, we will minimize the sensitivities of H_o , ω_p and Q_p to all of the components (see [Appendix A](#)).

To achieve the best production yield, the nominal filter design must also compensate for component and board parasitics. For information on filter component pre-distortion, see [5]. SPICE simulations, with good component and board models, help adjust the nominal design point to compensate for parasitics.

For an overview of sensitivity analysis, with applications to filter design, see [Appendix A](#). For useful sensitivity properties and formulas, see [Appendix B](#). For a more complete discussion of sensitivity functions, their applications, and other approaches to improving the manufacturing yield of your filter, see the references listed in [Section 6](#).

2 KRC Lowpass Biquad

The biquad shown in [Figure 1](#) is a Sallen-Key lowpass biquad. V_{IN} needs to be a voltage source with low output impedance. R_1 and R_2 attenuate V_{IN} to keep the signal within the op amp's dynamic range. The Thevenin equivalent of V_{IN} , R_1 and R_2 is a voltage source αV_{IN} , with an output impedance of R_{12} , where:

$$\alpha = R_2/(R_1 + R_2)$$

$$R_{12} = (R_1 \parallel R_2)$$

The input impedance in the passband is:

$$Z_{IN} = R_1 + R_2, \quad \omega \ll \omega_p$$

The transfer function is:

$$\frac{V_o}{V_{IN}} \approx \frac{H_o}{1 + (1/(\omega_p Q_p))s + (1/\omega_p^2)s^2}$$

where:

$$K = 1 + R_f/R_g$$

$$H_o = \alpha K$$

$$1/(\omega_p Q_p) = R_{12} C_5 (1 - K) + R_3 C_4 + R_{12} C_4$$

$$1/\omega_p^2 = R_{12} R_3 C_4 C_5 \quad (2)$$

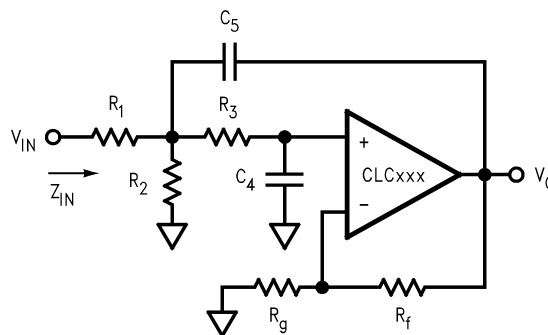


Figure 1. Lowpass Biquad

To achieve low sensitivities, use this design algorithm:

1. Partition the gain for good Q_p sensitivity and dynamic range performance:

- (a) Use a low noise amplifier before this biquad if you need a large gain.

- (b) Select K for good sensitivity with this empirical formula:

$$K = \begin{cases} 1 & , 0.1 \leq Q_p \leq 1.1 \\ \frac{2.2 Q_p - 0.9}{Q_p + 0.2} & , 1.1 < Q_p < 5 \end{cases} \quad (3)$$

- (c) These values also reduce the op amp bandwidth's impact on the filter response, and increase the bandwidth for voltage-feedback op amps. When $Q_p \geq 5$, the sensitivities of this biquad are very high

- (d) Set α as close to 1 as possible while keeping the signal within the op amp's dynamic range

2. Select an op amp with adequate bandwidth ($f_{3\text{ dB}}$) and slew rate: (SR):

- (a) $f_{3\text{ dB}} \geq 10f_c$

- (b) $SR > 5f_c V_{\text{peak}}$

- (c) where f_c is the corner frequency of the filter, and V_{peak} is the largest peak voltage. Make sure the op amp is stable at a gain of $A_v = K$.

3. Select R_f and R_g so that:

- (a) $K = 1 + R_f/R_g$

- (b) For current-feedback op amps, use the recommended value of R_f for a gain of $A_v = K$. For voltage-feedback op amps, select R_f for noise and distortion performance.

4. Initialize the resistance level ($R = \sqrt{R_{12} R_3}$). This value is a compromise between noise performance, distortion performance, and adequate isolation between the op amp outputs and the capacitors.

5. Initialize the capacitance level ($C = \sqrt{C_4 C_5}$), the resistor ratio ($r^2 = R_{12} / R_3$), the capacitor ratio ($c^2 = C_4/C_5$) and the capacitors:

- (a) $C = 1/(R\omega_p)$

- (b) $r^2 = 0.10$

$$c^2 = \max \left(\left(\frac{1 + \sqrt{1 + 4Q_p^2(1+r^2)(K-1)}}{2 \cdot Q_p \cdot (1+r^2)/r} \right)^2, 0.10 \right) \quad (4)$$

- (c) $C_4 = cC$

- (d) $C_5 = C/c$

6. Set the capacitors C_4 and C_5 to the nearest standard values.

7. Recalculate C , c^2 , R and r^2 :

- (a) $C = \sqrt{C_4 C_5}$

- (b) $c^2 = C_4/C_5$

- (c) $R = 1/(C\omega_p)$

$$r^2 = \left(\frac{2 \cdot cQ_p}{1 + \sqrt{1 + 4Q_p^2(K-1-c^2)}} \right)^2 \quad (5)$$

8. Calculate R_{12} and the resistors

- (a) $R_{12} = rR$

- (b) $R_1 = R_{12}/\alpha$

- (c) $R_2 = R_{12}/(1-\alpha)$

- (d) $R_3 = R/r$

V_{IN} can represent a source driving a transmission line, with R_1 and R_2 the source and terminating resistances. For this type of application, make these modifications to the design algorithm:

- Select R_1 and R_2 to properly terminate the transmission line (R_1 includes the source resistance)
- Calculate α and R_{12}

- Adjust C and R so that $R_{12} = rR$

To evaluate the sensitivity performance of this design, follow these steps:

- Calculate the resulting sensitivities:

| α_i | $S_{\alpha_i}^{H_o}$ | $S_{\alpha_i}^{\omega_p}$ | $S_{\alpha_i}^{Q_p}$ |
|------------|----------------------|---------------------------|---|
| K | 1 | 0 | $\left(K \cdot Q_p \cdot \frac{r}{c} \right)$ |
| R_1 | $-(1-\alpha)$ | $-\frac{\alpha}{2}$ | $(\alpha) \cdot \left(Q_p \cdot \frac{c}{r} - \frac{1}{2} \right)$ |
| R_2 | $(1-\alpha)$ | $-\frac{1-\alpha}{2}$ | $(1-\alpha) \cdot \left(Q_p \cdot \frac{c}{r} - \frac{1}{2} \right)$ |
| R_3 | 0 | $-\frac{1}{2}$ | $-\left(Q_p \cdot \frac{c}{r} - \frac{1}{2} \right)$ |
| R_f | $\frac{K-1}{K}$ | 0 | $\left((K-1) \cdot Q_p \cdot \frac{r}{c} \right)$ |
| R_g | $-\frac{K-1}{K}$ | 0 | $-\left((K-1) \cdot Q_p \cdot \frac{r}{c} \right)$ |
| C_4 | 0 | $-\frac{1}{2}$ | $-\left((K-1) \cdot Q_p \cdot \frac{r}{c} + \frac{1}{2} \right)$ |
| C_5 | 0 | $-\frac{1}{2}$ | $\left((K-1) \cdot Q_p \cdot \frac{r}{c} + \frac{1}{2} \right)$ |

Reducing $\left| S_K^{Q_p} \right|$ lowers the biquad's sensitivity to the op amp bandwidth.

- Calculate the relative standard deviations of H_o , ω_p and Q_p : $\left(\frac{\sigma_x}{X} \right)^2 \approx \sum_i \left(\left| S_{\alpha_i}^X \right| \cdot \frac{\sigma_{\alpha_i}}{\alpha_i} \right)^2$ In this formula, use:
 - The nominal values of H_o , ω_p and Q_p for X
 - The nominal values of R_1 , R_2 , R_3 , R_f , R_g , C_4 and C_5 for α_i (do not use K since it is not a component)
 - The capacitor and resistor standard deviations for σ_{α_i} . For parts with a uniform probability distribution,

$$\sigma_{\alpha_i} = \frac{\max(\alpha_i) - \min(\alpha_i)}{\sqrt{12}} \quad (6)$$

- If temperature performance is a concern, then estimate the change in nominal values of H_o , ω_p and Q_p over the design temperature range:

$$X(T) \approx X \left(1 + \sum_i \left(S_{\alpha_i}^X \cdot \frac{\alpha_i(T) - \alpha_i}{\alpha_i} \right) \right)$$

In this formula, use:

- The nominal values, at room temperature, of H_o , ω_p and Q_p for X
 - The nominal values, at room temperature, of R_1 , R_2 , R_3 , R_f , R_g , C_4 and C_5 for α_i (do not use K since it is not a component)
 - The nominal resistor and capacitor values at temperature T for $\alpha_i(T)$
- Estimate the probable ranges of values for H_o , ω_p and Q_p :
 - $X \geq (1-3 \cdot \sigma_x/X) \cdot \min(X(T))$
 - $X \leq 1+3 \cdot \sigma_x/X) \cdot \max(X(T))$
 - where X is H_o , ω_p and Q_p

3 Design Example

The circuit shown in Figure 2 is a third order Chebyshev lowpass filter. Section 3.2 is a buffered single pole section, and Section 3.3 is a lowpass biquad. Use a voltage source with low output impedance, such as the CLC111 buffer, for V_{IN} .

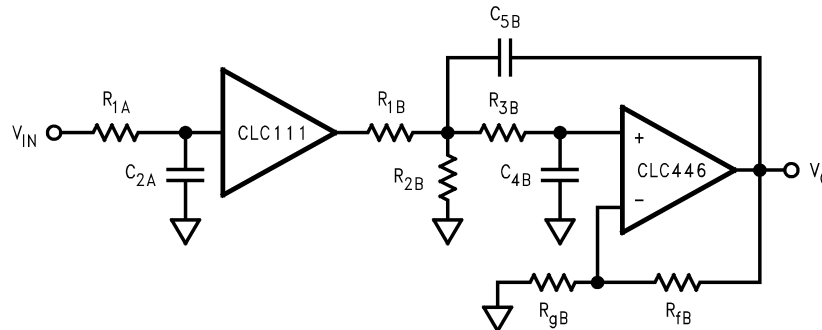


Figure 2. Lowpass Filter

The nominal filter specifications are:

$$f_c = 500 \text{ MHz (passband edge frequency)}$$

$$f_s = 100 \text{ MHz (stopband edge frequency)}$$

$$A_p = 0.5 \text{ dB (maximum passband ripple)}$$

$$A_s = 19 \text{ dB (minimum stopband attenuation)}$$

$$H_0 = 0 \text{ dB (DC voltage gain)}$$

The third order Chebyshev filter meets our specifications (see References [1] through [4]). The resulting -3 dB frequency is 58.4 MHz. The pole frequencies and quality factors are:

| Section | A | B |
|-----------------------|-------|-------|
| $\omega_p/2\pi$ [MHz] | 53:45 | 31:30 |
| Q_p [] | 1.706 | — |

3.1 Overall Design

1. Restrict the resistor and capacitor ratios to:
 - (a) $0.1 \leq r^2 \leq 10$
 - (b) $0.1 \leq c^2 \leq 10$
2. Use 1% resistors (chip metal film, 1206 SMD, 25 ppm/°C)
3. Use 1% capacitors (ceramic chip, 1206 SMD, 100 ppm/°C)
4. Use standard resistor and capacitor values
5. The temperature range is -40°C to 85°C , and room temperature is 25°C

3.2 Section A Design

- Use the CLC111. This is a closed-loop buffer.
 - $f_{3\text{ dB}} = 800\text{ MHz} > 10 f_c = 500\text{ MHz}$
 - $SR = 3500\text{V}/\mu\text{s}$, while a 50 MHz, 2V_{pp} sinusoid requires more than 250V/μs
 - $C_{ni(111)} = 1.3\text{ pF}$ (input capacitance)
- We selected R_{1A} for noise, distortion and to properly isolate the CLC111's output and C_{2A}. The capacitor C_{2A} then sets the pole frequency: $1/\omega_p = R_{1A}C_{2A}$. The results are in the table below:
 - The Initial Value column shows values from the calculations above
 - The Adjusted Value column shows the component values that compensate for C_{ni(111)} and for the CLC111's finite bandwidth (see Comlinear's application report on filter component pre-distortion [5])
 - The Standard Value column shows the nearest available standard 1% resistors and capacitors

| Component | Value | | |
|----------------------|---------|----------|----------|
| | Initial | Adjusted | Standard |
| R _{1A} | 108Ω | 100Ω | 100Ω |
| C _{2A} | 47 pF | 47 pF | 47 pF |
| C _{ni(111)} | — | 1.3 pF | 1.3 pF |

3.3 Section B Design

- The recommended value of K_B for Q_p = 1.706 is: $K_B = \frac{2.2(1.706) - 0.9}{(1.706) + 0.2} = 1.50$ Set $\alpha_B = H_0/K_B = 0.667$.
- Use the CLC446. This is a current-feedback op amp
 - $f_{3\text{ dB}} = 400\text{ MHz} \approx 10 f_c = 500\text{ MHz}$
 - $SR = 2000\text{V}/\mu\text{s} > 250\text{V}/\mu\text{s}$ (see Item #1 in "Section A Design")
 - $C_{ni(446)} = 1.0\text{ pF}$ (non-inverting input capacitance)
- Set R_{1B} to the CLC446's recommended R_f at A_v = +15:
 - R_{1B} = 348Ω
 - Then set R_{gB} = 696Ω so that K_B = 1.50.
- Initialize the resistor level for noise and distortion performance:
 - R ≈ 200Ω
- Initialize the capacitor level, resistor and capacitor ratios, and the capacitors:

$$C \approx \frac{1}{(200\Omega) \cdot (2\pi(53.45\text{ MHz}))} = 15\text{ pF}$$
 - r² ≈ 0.10
 - c² ≈ max (0.0983, 0.10) = 0.1000
 - C_{4B} ≈ 4.7 pF
 - C_{5B} ≈ 4.7 pF
- Set the capacitors to the nearest standard values:
 - C_{4B} = 4.7 pF
 - C_{5B} = 4.7 pF

$$C = \sqrt{(4.7\text{ pF}) \cdot (47\text{ pF})} = 14.86\text{ pF}$$

$$c^2 = (4.7\text{ pF})/(47\text{ pF}) = 0.1000$$

$$R = \frac{1}{(14.86\text{ pF}) \cdot (2\pi(53.45\text{ MHz}))} = 200.4\Omega$$

- Recalculate the capacitor level and ratio, and the resistor level and ratio: r² = 0.1020

8. Calculate R_{12B} and the resistor values:

- (a) $R_{12B} = 64.0\Omega$
- (b) $R_{1B} = 96.0\Omega$
- (c) $R_{2B} = 192\Omega$
- (d) $R_{3B} = 627\Omega$
- (e) The resulting component values are:

| Component | Value | | |
|---------------|---------------|---------------|---------------|
| | Initial | Adjusted | Standard |
| R_{1B} | 96.0 Ω | 78.9 Ω | 78.7 Ω |
| R_{2B} | 192 Ω | 158 Ω | 158 Ω |
| R_{3B} | 627 Ω | 582 Ω | 576 Ω |
| C_{4B} | 4.7 pF | 3.7 pF | 3.6 pF |
| $C_{ni(446)}$ | — | 1.0 pF | 1.0 pF |
| C_{5B} | 47 pF | 47 pF | 47 pF |
| R_{fB} | 348 Ω | 348 Ω | 348 Ω |
| R_{gB} | 696 Ω | 696 Ω | 698 Ω |

9. The sensitivities for this design are:

| α_i | $\frac{H_o}{S_{\alpha i}}$ | $\frac{\omega_p}{S_{\alpha i}}$ | $\frac{Q_p}{S_{\alpha i}}$ |
|------------|----------------------------|---------------------------------|----------------------------|
| K | 1.00 | 0.00 | 2.58 |
| R_{1B} | -0.33 | -0.33 | 0.79 |
| R_{2B} | 0.33 | -0.17 | 0.40 |
| R_{3B} | 0.00 | -0.50 | -1.19 |
| R_{fB} | 0.33 | 0.00 | 0.86 |
| R_{gB} | -0.33 | 0.00 | -0.86 |
| C_{4B} | 0.00 | -0.50 | -1.36 |
| C_{5B} | 0.00 | -0.50 | 1.36 |

10. The relative standard deviations of H_o , ω_p and Q_p are:

- (a) $\sigma_{H_o}/H_o \approx 0.38\%$
- (b) $\sigma_{\omega_p}/\omega_p \approx 0.55\%$
- (c) $\sigma_{Q_p}/Q_p \approx 1.58\%$

These standard deviations are based on a uniform distribution, with all resistors and capacitor values being independent:

$$\frac{\sigma_R}{R} \approx \frac{\sigma_C}{C} \approx \frac{1.00\% - (-1.00\%)}{\sqrt{12}} \approx 0.58\% \quad (7)$$

11. The nominal values of H_o , ω_p and Q_p over the design temperature range are:

| T [°C] | -40 | 25 | 85 |
|-----------------------|-------|-------|-------|
| H_o [V/V] | 1.000 | 1.000 | 1.000 |
| $\omega_p/2\pi$ [MHz] | 53.88 | 53.45 | 53.00 |
| Q_p [] | 1.706 | 1.706 | 1.706 |

12. The probable ranges of values for H_o , ω_p and Q_p , over the design temperature range, are:

- (a) $0.99 \leq H_o \leq 1.01$
- (b) $52.1 \text{ MHz} \leq (\omega_p/2\pi) \leq 54.8 \text{ MHz}$
- (c) $1.63 \leq Q_p \leq 1.79$

13. Based on the results in #10 and #12, we can conclude that:
- The DC gain and cutoff frequency change little with component value and temperature changes
 - Q_p has the greatest sensitivity to fabrication changes
 - The greatest filter response variation is in the peaking near the cutoff frequency

Figure 3 shows the results of a Monte-Carlo simulation at room temperature, with 100 cases simulated. These simulations used the “Standard Values” of the components. The gain curves are:

- Lower 3-sigma limit (mean minus 3 times the standard deviation)
- Mean value
- Upper 3-sigma limit (mean plus 3 times the standard deviation)

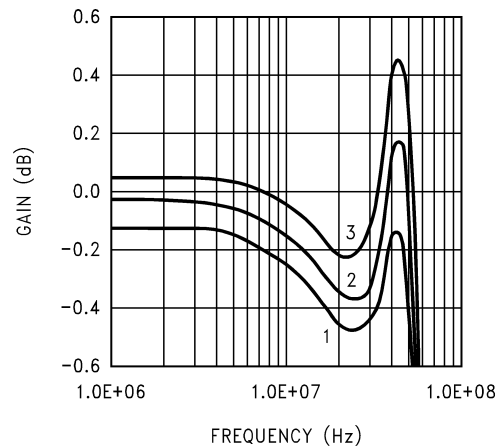


Figure 3. Monte-Carlo Simulation Results

4 SPICE Models

SPICE models are available for most of Comlinear’s amplifiers. These models support nominal DC, AC, AC noise and transient simulations at room temperature.

It is recommended simulating with Comlinear’s SPICE models to:

- Predict the op amp’s influence on filter response
- Support quicker design cycles

Include board and component parasitic models to obtain a more accurate prediction of the filter’s response.

To verify your simulations, we recommend bread-boarding your circuit.

5 Summary

This application report contains an easy to use design algorithm for a low sensitivity, Sallen-Key lowpass biquad, which works for $Q_p < 5$. It also shows the basics of evaluating filter sensitivity performance.

Designing for low ω_p and Q_p sensitivities gives:

- Reduced filter variation over process, temperature and time
- Higher manufacturing yield
- Lower component cost

A low sensitivity design is not enough to produce high manufacturing yields. The nominal design must also compensate for any component parasitics, board parasitics, and op amp bandwidth (see Comlinear’s application report on filter component pre-distortion [5]). The components must also have low enough tolerance and temperature coefficients.

6 References

1. R. Schaumann, M. Ghausi and K. Laker, *Design of Analog Filters: Passive, Active RC, and Switched Capacitor*. New Jersey: Prentice Hall, 1990.
2. A. Zverev, *Handbook of FILTER SYNTHESIS*. John Wiley & Sons, 1967.
3. A. Willaims and F. Taylor, *Electronic Filter Design Handbook*, McGraw Hill, 1995.
4. S. Natarajan, *Theory and Design of Linear Active Networks*. Macmillan, 1987.
5. *OA-21 Component Pre-Distortion for Sallen Key Filters* ([SNOA369](#))
6. K. Antreich, H. Graeb, and C. Wieser, "Circuit Analysis and Optimization Driven by Worst-Case Distances," *IEEE Trans. Computer-Aided Design*, vol. 13(1), pp. 59–71, Jan. 1994.
7. K. Krishna and S. Director, "The Linearized Performance Penalty (LPP) Method for Optimization of Parametric Yield and Its Reliability," *IEEE Trans. Computer-Aided Design*, vol. 14(12), pp. 1557–68, Dec. 1995.
8. A. Lokanathan and J. Brockman, "Efficient Worst Case Analysis of Integrated Circuits," *IEEE 1995 Custom Integrated Circuits Conf.*, pp. 11.4.1–4, 1995.

Appendix A Transfer Function Examples

A.1 Sensitivity Analysis Overview

The classic logarithmic sensitivity function is:

$$\begin{aligned}
 S_{\alpha_i}^X &= \frac{\partial(\ln X)}{\partial(\ln \alpha_i)} ; \alpha_i, X \neq 0 \\
 &= \frac{\alpha_i}{X} \cdot \frac{\partial X}{\partial \alpha_i} \\
 &\approx \frac{\Delta X / X}{\Delta \alpha_i / \alpha_i}
 \end{aligned} \tag{8}$$

where, α_i is a component value, and X is a filter performance measure (in the most general case, this is a complex-value function or frequency). The sensitivity function is a dimensionless figure of merit used in filter design.

You can approximate the relative change in X caused by the relative changes in the components α_i as:

$$\frac{\Delta X}{X} \approx \sum_i S_{\alpha_i}^X \cdot \frac{\Delta \alpha_i}{\alpha_i} \tag{9}$$

where,

$$\begin{aligned}
 &\alpha_i, X \neq 0 \\
 &\left| \frac{\Delta \alpha_i}{\alpha_i} \right|, \left| \frac{\Delta X}{X} \right| \ll 1
 \end{aligned} \tag{10}$$

The relative standard deviation of X is calculated using:

$$\left(\frac{\sigma_X}{X} \right)^2 \approx \sum_i \left(\left| S_{\alpha_i}^X \right| \cdot \frac{\sigma_{\alpha_i}}{\alpha_i} \right)^2 \tag{11}$$

where,

- The summation is over all component values (α_i) that affect X
- All component values (α_i) are physically independent (no statistical correlation)

The nominal value of X is a function of temperature:

$$\begin{aligned}
 X(T) &= X \left(1 + \frac{X(T) - X}{X} \right) \\
 &\approx X \left(1 + \sum_i \left(S_{\alpha_i}^X \cdot \frac{\alpha_i(T) - \alpha_i}{\alpha_i} \right) \right)
 \end{aligned} \tag{12}$$

where,

- X is the nominal value of X at room temperature
- $\alpha_i(T)$ is the nominal value of α_i at temperature T
- $X(T)$ is the nominal value of X at temperature T

To help reduce variation in filter performance:

- Reduce the sensitivity function magnitudes $\left| S_{\alpha_i}^X \right|$, where X is H_o , ω_p and Q_p , and α_i is any of the component values, the gain K , or operating conditions (such as temperature or supply voltage)
- Use components with smaller tolerances
- Use components with lower temperature coefficients

Appendix B Biquad Section, s Term in the Denominator That Includes K

B.1 Handy Sensitivity Formulas

Notation:

- k, m, n = constants
- α, β = [non-zero] component parameters
- X, Y = [non-zero] performance measures

Formulas:

1. $S_{\alpha}^{k\alpha^n} = n$
2. $S_{\alpha}^{kX} = S_{k\alpha}^X = S_{\alpha}^X$
3. $S_{\alpha}^{X^m Y^n} = \frac{m}{k} \cdot S_{\alpha}^X + \frac{n}{k} \cdot S_{\alpha}^Y$
4. $S_{\alpha}^X = 1/S_X^{\alpha}$
5. $S_{\alpha}^{Y(X(\alpha))} = S_X^Y S_{\alpha}^X$
6. $S_{\gamma}^{X(\alpha, \beta)} = S_{\alpha}^X S_{\gamma}^{\alpha} + S_{\beta}^X S_{\gamma}^{\beta}$
7. $S_{\alpha}^X = \text{Re}(S_{\alpha}^X) + j \text{Im}(S_{\alpha}^X)$

where:

$$\begin{aligned} \text{Re}(S_{\alpha}^X) &= S_{\alpha}^{|X|} \\ \text{Im}(S_{\alpha}^X) &= \arg(X) \cdot S_{\alpha}^{\arg(X)} = \alpha \cdot \frac{\partial(\arg(X))}{\partial(\alpha)} \end{aligned}$$

(13)

IMPORTANT NOTICE

Texas Instruments Incorporated and its subsidiaries (TI) reserve the right to make corrections, enhancements, improvements and other changes to its semiconductor products and services per JESD46, latest issue, and to discontinue any product or service per JESD48, latest issue. Buyers should obtain the latest relevant information before placing orders and should verify that such information is current and complete. All semiconductor products (also referred to herein as "components") are sold subject to TI's terms and conditions of sale supplied at the time of order acknowledgment.

TI warrants performance of its components to the specifications applicable at the time of sale, in accordance with the warranty in TI's terms and conditions of sale of semiconductor products. Testing and other quality control techniques are used to the extent TI deems necessary to support this warranty. Except where mandated by applicable law, testing of all parameters of each component is not necessarily performed.

TI assumes no liability for applications assistance or the design of Buyers' products. Buyers are responsible for their products and applications using TI components. To minimize the risks associated with Buyers' products and applications, Buyers should provide adequate design and operating safeguards.

TI does not warrant or represent that any license, either express or implied, is granted under any patent right, copyright, mask work right, or other intellectual property right relating to any combination, machine, or process in which TI components or services are used. Information published by TI regarding third-party products or services does not constitute a license to use such products or services or a warranty or endorsement thereof. Use of such information may require a license from a third party under the patents or other intellectual property of the third party, or a license from TI under the patents or other intellectual property of TI.

Reproduction of significant portions of TI information in TI data books or data sheets is permissible only if reproduction is without alteration and is accompanied by all associated warranties, conditions, limitations, and notices. TI is not responsible or liable for such altered documentation. Information of third parties may be subject to additional restrictions.

Resale of TI components or services with statements different from or beyond the parameters stated by TI for that component or service voids all express and any implied warranties for the associated TI component or service and is an unfair and deceptive business practice. TI is not responsible or liable for any such statements.

Buyer acknowledges and agrees that it is solely responsible for compliance with all legal, regulatory and safety-related requirements concerning its products, and any use of TI components in its applications, notwithstanding any applications-related information or support that may be provided by TI. Buyer represents and agrees that it has all the necessary expertise to create and implement safeguards which anticipate dangerous consequences of failures, monitor failures and their consequences, lessen the likelihood of failures that might cause harm and take appropriate remedial actions. Buyer will fully indemnify TI and its representatives against any damages arising out of the use of any TI components in safety-critical applications.

In some cases, TI components may be promoted specifically to facilitate safety-related applications. With such components, TI's goal is to help enable customers to design and create their own end-product solutions that meet applicable functional safety standards and requirements. Nonetheless, such components are subject to these terms.

No TI components are authorized for use in FDA Class III (or similar life-critical medical equipment) unless authorized officers of the parties have executed a special agreement specifically governing such use.

Only those TI components which TI has specifically designated as military grade or "enhanced plastic" are designed and intended for use in military/aerospace applications or environments. Buyer acknowledges and agrees that any military or aerospace use of TI components which have **not** been so designated is solely at the Buyer's risk, and that Buyer is solely responsible for compliance with all legal and regulatory requirements in connection with such use.

TI has specifically designated certain components as meeting ISO/TS16949 requirements, mainly for automotive use. In any case of use of non-designated products, TI will not be responsible for any failure to meet ISO/TS16949.

Products

| | |
|------------------------------|--|
| Audio | www.ti.com/audio |
| Amplifiers | amplifier.ti.com |
| Data Converters | dataconverter.ti.com |
| DLP® Products | www.dlp.com |
| DSP | dsp.ti.com |
| Clocks and Timers | www.ti.com/clocks |
| Interface | interface.ti.com |
| Logic | logic.ti.com |
| Power Mgmt | power.ti.com |
| Microcontrollers | microcontroller.ti.com |
| RFID | www.ti-rfid.com |
| OMAP Applications Processors | www.ti.com/omap |
| Wireless Connectivity | www.ti.com/wirelessconnectivity |

Applications

| | |
|-------------------------------|--|
| Automotive and Transportation | www.ti.com/automotive |
| Communications and Telecom | www.ti.com/communications |
| Computers and Peripherals | www.ti.com/computers |
| Consumer Electronics | www.ti.com/consumer-apps |
| Energy and Lighting | www.ti.com/energy |
| Industrial | www.ti.com/industrial |
| Medical | www.ti.com/medical |
| Security | www.ti.com/security |
| Space, Avionics and Defense | www.ti.com/space-avionics-defense |
| Video and Imaging | www.ti.com/video |

TI E2E Community

e2e.ti.com