

LMZ1050x / LMZ1050xEXT SIMPLE SWITCHER® Power Module - Quick Compensation Design

Yang Zhang, Akshay Mehta

ABSTRACT

The LMZ1050x is fully supported by WEBENCH®, which is the fastest way to design a complete power solution, including loop compensation. This application note provides the power supply designer with more detailed design information for stabilizing the LMZ1050x using any type of output capacitor material. The LMZ1050x can achieve stability with a wide range of output capacitances (C_o) and equivalent series resistance (ESR).

Contents

1	Conclusion	8
---	------------------	---

List of Figures

1	Typical Application Schematic	3
2	Complete Loop Gain Schematic	4
3	Power Stage Gain	5
4	Compensation Stage Gain.....	6
5	Complete Loop Gain	6
6	Power Stage Phase	7
7	Compensation Stage Phase.....	7
8	Complete Loop Phase	8

List of Tables

1	LMZ10505/LMZ10504 Compensation Component Values.....	2
2	LMZ10503 Compensation Component Values	3

SIMPLE SWITCHER, WEBENCH are registered trademarks of Texas Instruments.
All other trademarks are the property of their respective owners.

Introduction

Feedback loop system stability is one of the most important design aspects of switching power supplies. Stabilizing the feedback loop requires control theory knowledge and its design can be an intimidating and daunting task. Fortunately, the LMZ1050x simplifies the compensation design by integrating type II compensation that reduces the number of external compensation components to two. A few equations can be used to easily optimize transient performance and stability for any application.

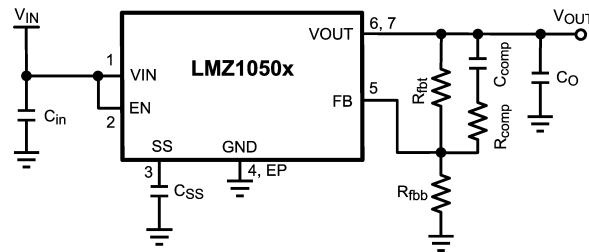
Below are several equations to quickly calculate the compensation components for the LMZ1050x. [Compensation Equation Background](#) is background information showing how these equations were derived. [Table 1](#) and [Table 2](#) are included for quick component selection in common applications.

Table 1. LMZ10505/LMZ10504 Compensation Component Values

V_{IN} (V)	C_o (μ F)	ESR (m Ω)		R_{fbt} (k Ω)	C_{comp} (pF)	R_{comp} (k Ω)
		Min	Max			
5.0	22	2	20	200	27	1.5
	47	2	20	124	68	1.4
	100	1	10	82.5	150	0.681
	150	1	5	63.4	220	1
	150	10	25	63.4	220	3.48
	150	26	50	226	62	12.1
	220	15	30	150	100	6.98
	220	31	60	316	560	14
3.3	22	2	20	118	43	9.09
	47	2	20	76.8	100	3.32
	100	1	10	49.9	180	2.49
	150	1	5	40.2	330	1
	150	10	25	43.2	330	4.99
	150	26	50	143	100	7.5
	220	15	30	100	180	4.99
	220	31	60	200	100	8.06

Table 2. LMZ10503 Compensation Component Values

V _{IN} (V)	C _O (μF)	ESR (mΩ)		R _{fbt} (kΩ)	C _{comp} (pF)	R _{comp} (kΩ)
		Min	Max			
5.0	22	2	20	150	47	1
	47	2	20	100	100	4.53
	100	1	10	71.5	180	2
	150	1	5	56.2	270	0.499
	150	10	25	100	180	4.53
	150	26	50	182	100	8.25
	220	15	30	133	160	4.99
	220	31	60	200	100	6.98
3.3	22	2	20	100	56.2	5.62
	47	2	20	76.8	120	3.32
	100	1	10	49.9	220	1
	150	1	5	40.2	430	1
	150	10	25	43.2	390	3.32
	150	26	50	100	180	4.53
	220	15	30	80.6	240	3.32
	220	31	60	140	150	4.99


Figure 1. Typical Application Schematic

Simplified Compensation Equations

For the voltage mode architecture, we know

$$f_{LC} = \frac{1}{2 \times \pi \times \sqrt{L \times C_O}} \quad (1)$$

To counter this double pole we place the zero caused by C_{comp}, R_{fbt}, and R_{comp} at this frequency. There is one additional zero caused by R_{CINT} and C_{CINT} (internal compensation components) at 17.6 kHz as shown in Figure 4. Therefore,

$$f_{zeroext} = f_{LC} \quad (2)$$

$$f_{LC} = \frac{1}{2 \times \pi \times C_{comp} \times (R_{fbt} + R_{comp})} \quad (3)$$

And,

$$f_{pole} = \frac{1}{2 \times \pi \times R_{comp} \times C_{comp}} \quad (4)$$

f_{pole} is the pole frequency caused by the R_{comp} and C_{comp} components. Placing this pole is important for good response and also good gain margin. This pole also counters the effect of the ESR zero. In this methodology, we place the f_{pole} at 200 kHz when the f_{ESR} is less than 200 kHz. For f_{ESR} greater than 200 kHz, the f_{pole} is kept at f_{ESR} as shown in Equation 5.

$$\begin{aligned} f_{pole} &= 200\text{kHz}; f_{ESR} \leq 200\text{kHz} \\ f_{pole} &= f_{ESR}; f_{ESR} > 200\text{kHz} \end{aligned} \quad (5)$$

$$Gain = 20 \times \log_{10} \left(\frac{V_{IN}}{V_{RAMP}} \right) + 10 \times \log_{10} \left(1 + \left(\frac{f_X}{f_{ESR}} \right)^2 \right) - 10 \times \log_{10} \left(\left(1 + \left(\frac{f_X}{f_{LC}} \right)^2 \right)^2 + \left(\frac{f_X}{Q \times f_{LC}} \right)^2 \right) \quad (11)$$

This gain is what needs to be added in order to obtain the desired crossover. At crossover frequency, this gain should be negative. Therefore negating it would give the positive gain required to be added.

The LMZ1050X has partial internal compensation. The R_{CINT} and C_{CINT} are internal components. This means that the upper feedback resistor can now be calculated based on the known internal compensation values. But since this device employs voltage mode control architecture, type III compensation is almost inevitable. Therefore along with the internal compensation components, the external compensation components need to be considered too.

$$10^{\frac{-Gain}{20}} = R_{CINT} \times \frac{\left(1 + \left(2 \times \pi \times f_X \times C_{comp} \times (R_{comp} + R_{fbt}) \right) \right)}{R_{fbt} \times \left(1 + \left(2 \times \pi \times f_X \times C_{comp} \times R_{comp} \right) \right)} \quad (12)$$

We can now re-write Equation 12 for R_{fbt} .

$$R_{fbt} = \frac{R_{CINT} + \left(2 \times \pi \times f_X \times C_{comp} \times R_{comp} \times R_{CINT} \right)}{10^{\frac{-Gain}{20}} \times \left(1 + \left(2 \times \pi \times f_X \times C_{comp} \times R_{comp} \right) \right) - \left(2 \times \pi \times f_X \times C_{comp} \times R_{CINT} \right)} \quad (13)$$

Equation 11 and Equation 13 then can be simplified to obtain Equation 6

These are the basic guidelines to calculate the compensation components. Additionally depending on the choice of output capacitors and whether the parasitic information is known or not, it might be required to tweak the component values to get a good loop response.

Furthermore the equations listed in this application note are designed for a single output capacitor or, in other words, capacitors of the same type. For a mixed type of capacitors at the output, the above equations do not hold. The figures shown below depict the compensation strategy as explained above.

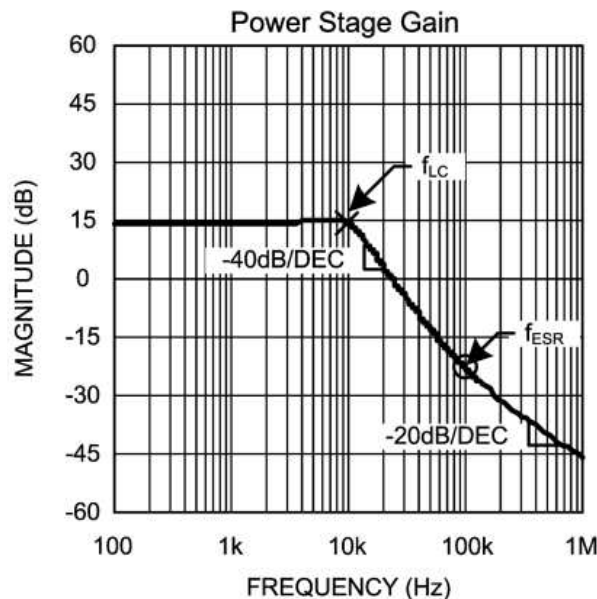


Figure 3. Power Stage Gain

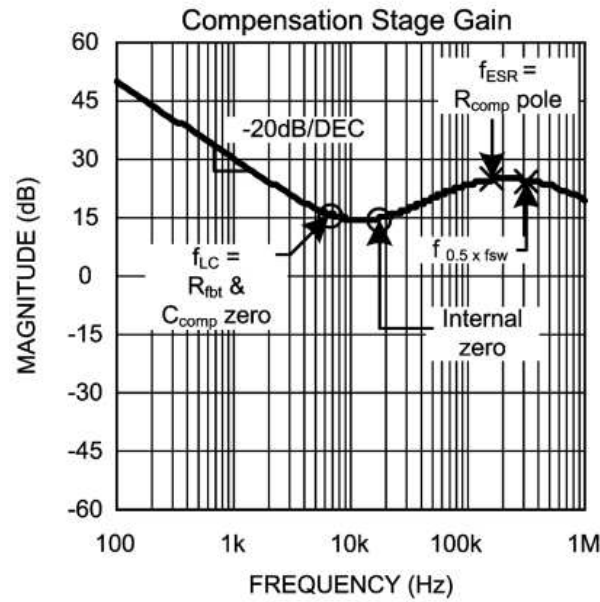


Figure 4. Compensation Stage Gain

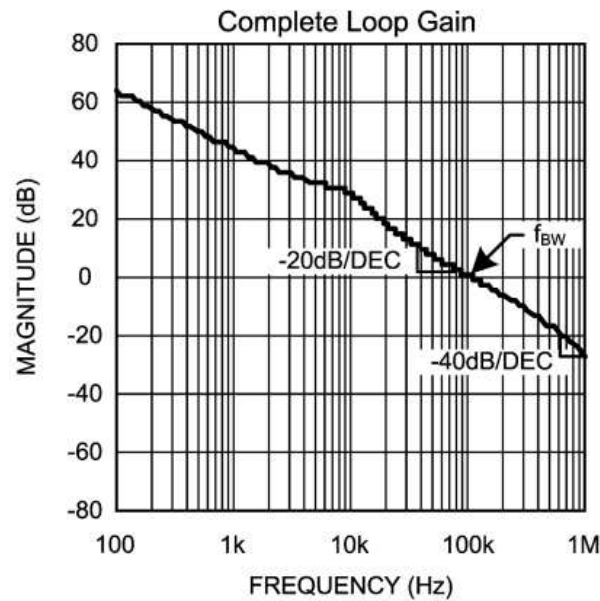


Figure 5. Complete Loop Gain

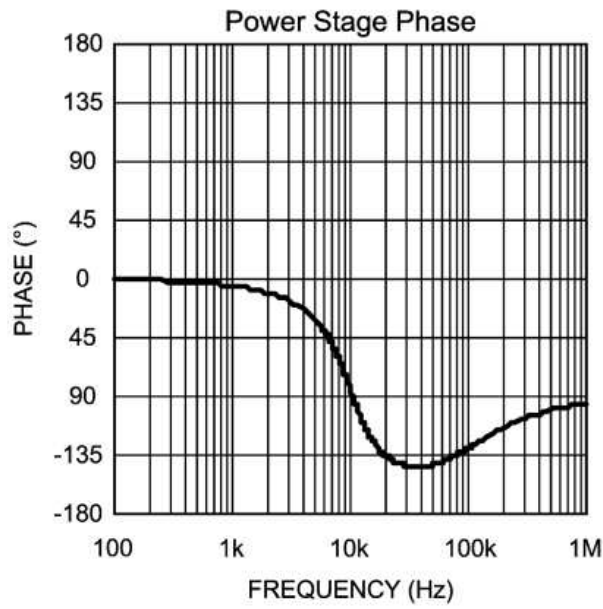


Figure 6. Power Stage Phase

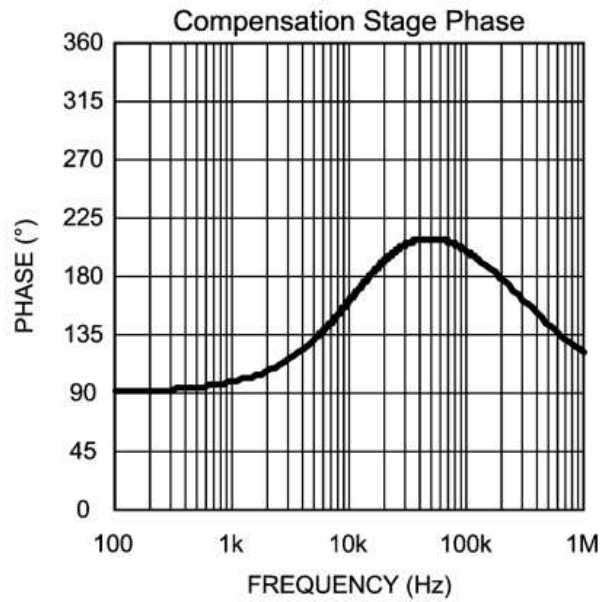


Figure 7. Compensation Stage Phase

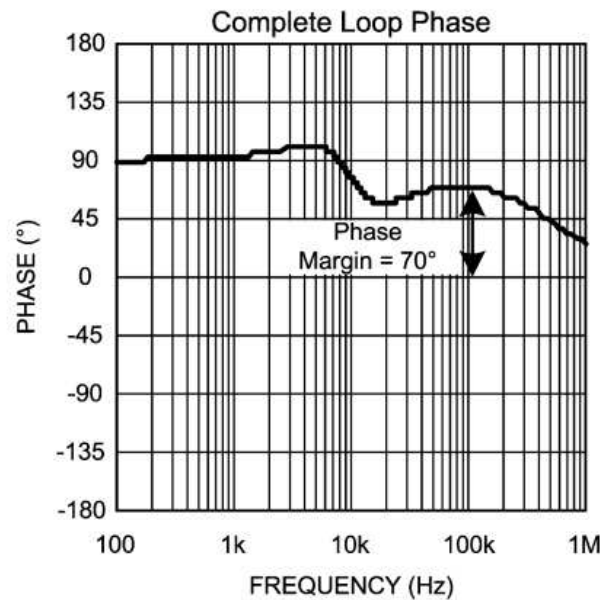


Figure 8. Complete Loop Phase

1 Conclusion

The LMZ1050x provides simplified type III compensation for the voltage mode control architecture and is flexible enough to allow all types of output capacitor material designs. The LMZ1050x is well balanced to support a wide range of R_{ESR} and C_O values while reducing the number of compensation components to two. For the device-specific data sheet, WEBENCH, evaluation board, application report, and reference design information go to: <http://www.ti.com/product/LMZ10504>

Revision History

Changes from C Revision (April 2013) to D Revision Page

- Changed all the contents from the previous version 8
-

NOTE: Page numbers for previous revisions may differ from page numbers in the current version.

IMPORTANT NOTICE

Texas Instruments Incorporated and its subsidiaries (TI) reserve the right to make corrections, enhancements, improvements and other changes to its semiconductor products and services per JESD46, latest issue, and to discontinue any product or service per JESD48, latest issue. Buyers should obtain the latest relevant information before placing orders and should verify that such information is current and complete. All semiconductor products (also referred to herein as "components") are sold subject to TI's terms and conditions of sale supplied at the time of order acknowledgment.

TI warrants performance of its components to the specifications applicable at the time of sale, in accordance with the warranty in TI's terms and conditions of sale of semiconductor products. Testing and other quality control techniques are used to the extent TI deems necessary to support this warranty. Except where mandated by applicable law, testing of all parameters of each component is not necessarily performed.

TI assumes no liability for applications assistance or the design of Buyers' products. Buyers are responsible for their products and applications using TI components. To minimize the risks associated with Buyers' products and applications, Buyers should provide adequate design and operating safeguards.

TI does not warrant or represent that any license, either express or implied, is granted under any patent right, copyright, mask work right, or other intellectual property right relating to any combination, machine, or process in which TI components or services are used. Information published by TI regarding third-party products or services does not constitute a license to use such products or services or a warranty or endorsement thereof. Use of such information may require a license from a third party under the patents or other intellectual property of the third party, or a license from TI under the patents or other intellectual property of TI.

Reproduction of significant portions of TI information in TI data books or data sheets is permissible only if reproduction is without alteration and is accompanied by all associated warranties, conditions, limitations, and notices. TI is not responsible or liable for such altered documentation. Information of third parties may be subject to additional restrictions.

Resale of TI components or services with statements different from or beyond the parameters stated by TI for that component or service voids all express and any implied warranties for the associated TI component or service and is an unfair and deceptive business practice. TI is not responsible or liable for any such statements.

Buyer acknowledges and agrees that it is solely responsible for compliance with all legal, regulatory and safety-related requirements concerning its products, and any use of TI components in its applications, notwithstanding any applications-related information or support that may be provided by TI. Buyer represents and agrees that it has all the necessary expertise to create and implement safeguards which anticipate dangerous consequences of failures, monitor failures and their consequences, lessen the likelihood of failures that might cause harm and take appropriate remedial actions. Buyer will fully indemnify TI and its representatives against any damages arising out of the use of any TI components in safety-critical applications.

In some cases, TI components may be promoted specifically to facilitate safety-related applications. With such components, TI's goal is to help enable customers to design and create their own end-product solutions that meet applicable functional safety standards and requirements. Nonetheless, such components are subject to these terms.

No TI components are authorized for use in FDA Class III (or similar life-critical medical equipment) unless authorized officers of the parties have executed a special agreement specifically governing such use.

Only those TI components which TI has specifically designated as military grade or "enhanced plastic" are designed and intended for use in military/aerospace applications or environments. Buyer acknowledges and agrees that any military or aerospace use of TI components which have **not** been so designated is solely at the Buyer's risk, and that Buyer is solely responsible for compliance with all legal and regulatory requirements in connection with such use.

TI has specifically designated certain components as meeting ISO/TS16949 requirements, mainly for automotive use. In any case of use of non-designated products, TI will not be responsible for any failure to meet ISO/TS16949.

Products

Audio	www.ti.com/audio
Amplifiers	amplifier.ti.com
Data Converters	dataconverter.ti.com
DLP® Products	www.dlp.com
DSP	dsp.ti.com
Clocks and Timers	www.ti.com/clocks
Interface	interface.ti.com
Logic	logic.ti.com
Power Mgmt	power.ti.com
Microcontrollers	microcontroller.ti.com
RFID	www.ti-rfid.com
OMAP Applications Processors	www.ti.com/omap
Wireless Connectivity	www.ti.com/wirelessconnectivity

Applications

Automotive and Transportation	www.ti.com/automotive
Communications and Telecom	www.ti.com/communications
Computers and Peripherals	www.ti.com/computers
Consumer Electronics	www.ti.com/consumer-apps
Energy and Lighting	www.ti.com/energy
Industrial	www.ti.com/industrial
Medical	www.ti.com/medical
Security	www.ti.com/security
Space, Avionics and Defense	www.ti.com/space-avionics-defense
Video and Imaging	www.ti.com/video

TI E2E Community

e2e.ti.com