

# PGA460-Q1 in Automotive Ultrasonic Kick-to-Open Liftgate Systems

Brian Rodriguez, Sensor Products



Also known as a Smart Trunk Opener (STO), the kick-to-open trunk application has grown significantly over recent years, especially in SUVs and high-end passenger vehicles. This feature allows the vehicle owner hands-free access to open the trunk with a simple kicking motion near the rear bumper.

## The Kick to Open System

Traditional kick-to-open liftgate systems use capacitive sensing strips located across the bottom of the bumper. However, many automotive Tier-1 suppliers are exploring ultrasonic sensing for this application, with some systems already in mass production. The advantage of ultrasonic sensing versus capacitive sensing is the former's reliability and robustness against environmental factors such as dirt and water. Capacitive sensing, on the other hand, is very sensitive to environmental factors and may not work when a car is dirty.

Ultrasonic sensors in the kick-to-open application have good sensitivity in the acoustical zone of the transducer – a sensing element used in ultrasonic sensing - with a decrease in response as the angular distance (horizontal offset) from the transducer increases. This differs from capacitive based solutions which have less sensitivity to the location of the kick. One potential way to address this issue is by placing an LED or other indicator on the bumper or tailgate to indicate the place which the user should kick.

The repeatability of the kick detection depends on several factors, such as the distance to the kick, the type of shoe or other material covering the foot or leg, and the orientation and positioning of the shoe.

## Key System Requirements

The following is a list of common requirements in ultrasonic solutions for kick-to-open systems:

1. Ability to detect objects from 15cm – 1m
2. Low quiescent current
3. Ability to operate off of a 12V car battery supply

### 1 - Ability to Detect Objects From 15cm - 1m

One of the challenges with using ultrasonic sensing in a kick-to-open liftgate application is the close distance detection range. The ability for an ultrasonic sensor to accurately detect near-field objects depends on the quality and specification of the transducer, the driver method and design, and the performance of the receive path (analog front-end and digital processing).

High-quality transducers such as Murata's MA58MF14-7N have more stable and reliable decay or "ringing" during transducer excitation. By selecting a high-quality transducer, you can reduce the length of time of the decay and more accurately predict the stability of the decay as well. (See [Figure 1](#).)



Figure 1. Typical Ultrasonic Decay Profile

The method and design of the transducer driver can also significantly impact the ultrasonic decay period and profile. In kick-to-open applications requiring near-field performance, TI recommends using a transformer drive topology. [Figure 2](#) is an example transformer drive schematic using the PGA460-Q1.

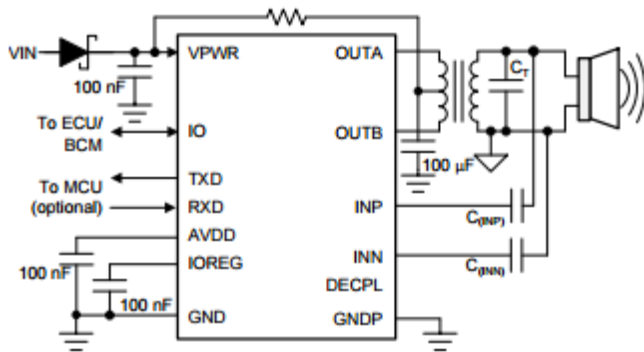


Figure 2. PGA460-Q1 Transformer Drive Schematic

When using a transformer to increase the supply voltage to excite the transducer, the decay profile is more predictable and less “choppy,” resulting in better near-range object-detection performance.

Finally, the performance of the AFE and digital processing affect both near and far object detection. For example, the PGA460-Q1 has a low-noise amplifier followed by a programmable time-varying gain stage feeding into a 12-bit successive approximation register analog-to-digital converter. The low-noise amplifier reduces noise from the received signal, and the programmable gain amplifier’s time-varying gain feature enables small gain applied to near-field objects and larger gain for far-field object detection. You can set the gain profile settings in the register for storage in electrically erasable programmable read-only memory (EEPROM).

**2 - Low Quiescent Current**

Since kick-to-open ultrasonic sensors must operate with the vehicle off, system quiescent current is critical and specified aggressively by OEMs. The PGA460-Q1 has a ~500µA sleep mode that you can leverage intermittently to bring the overall system’s current consumption to the necessary levels.

**3 - Ability to Operate Off of a 12V Car Battery Supply**

The PGA460-Q1 device is designed to operate from an input voltage supply range from 6V to 28V. In kick-to-open liftgate applications, the PGA460-Q1 device connects directly to a car battery. Proper external component safeguards such as a transient voltage suppression (TVS) diode help protect the device from battery transients and reverse-battery currents.

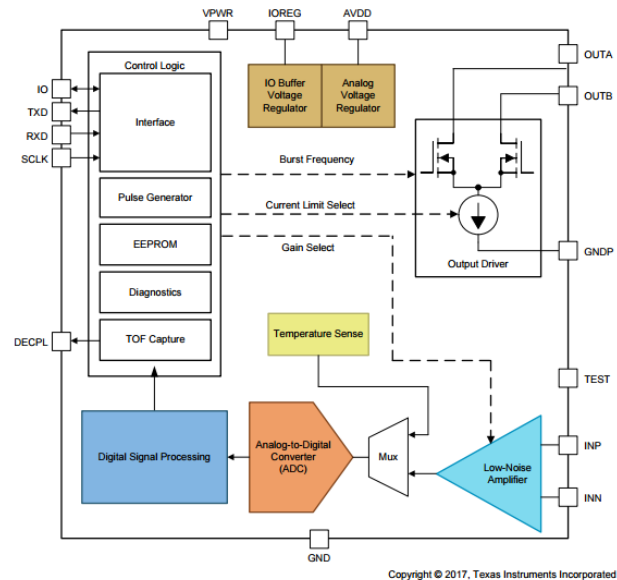


Figure 3. PGA460-Q1 Block Diagram

**Additional Resources**

- Order the [PGA460-Q1 evaluation module \(EVM\)](#).
- Watch [PGA460-Q1 EVM training video series](#).
- Download the [PGA460 frequently asked questions \(FAQ\) and EVM troubleshooting guide](#).
- Download the [PGA460 ultrasonic module hardware and software optimization application report](#).

**Revision History**

NOTE: Page numbers for previous revisions may differ from page numbers in the current version.

Changes from A Revision (September 2017) to B Revision	Page
• Deleted author Akeem Whitehead from document which was added in error .....	1

Changes from Original (July 2017) to A Revision	Page
• Added additional author Akeem Whitehead to document.....	1

## IMPORTANT NOTICE FOR TI DESIGN INFORMATION AND RESOURCES

Texas Instruments Incorporated ("TI") technical, application or other design advice, services or information, including, but not limited to, reference designs and materials relating to evaluation modules, (collectively, "TI Resources") are intended to assist designers who are developing applications that incorporate TI products; by downloading, accessing or using any particular TI Resource in any way, you (individually or, if you are acting on behalf of a company, your company) agree to use it solely for this purpose and subject to the terms of this Notice.

TI's provision of TI Resources does not expand or otherwise alter TI's applicable published warranties or warranty disclaimers for TI products, and no additional obligations or liabilities arise from TI providing such TI Resources. TI reserves the right to make corrections, enhancements, improvements and other changes to its TI Resources.

You understand and agree that you remain responsible for using your independent analysis, evaluation and judgment in designing your applications and that you have full and exclusive responsibility to assure the safety of your applications and compliance of your applications (and of all TI products used in or for your applications) with all applicable regulations, laws and other applicable requirements. You represent that, with respect to your applications, you have all the necessary expertise to create and implement safeguards that (1) anticipate dangerous consequences of failures, (2) monitor failures and their consequences, and (3) lessen the likelihood of failures that might cause harm and take appropriate actions. You agree that prior to using or distributing any applications that include TI products, you will thoroughly test such applications and the functionality of such TI products as used in such applications. TI has not conducted any testing other than that specifically described in the published documentation for a particular TI Resource.

You are authorized to use, copy and modify any individual TI Resource only in connection with the development of applications that include the TI product(s) identified in such TI Resource. NO OTHER LICENSE, EXPRESS OR IMPLIED, BY ESTOPPEL OR OTHERWISE TO ANY OTHER TI INTELLECTUAL PROPERTY RIGHT, AND NO LICENSE TO ANY TECHNOLOGY OR INTELLECTUAL PROPERTY RIGHT OF TI OR ANY THIRD PARTY IS GRANTED HEREIN, including but not limited to any patent right, copyright, mask work right, or other intellectual property right relating to any combination, machine, or process in which TI products or services are used. Information regarding or referencing third-party products or services does not constitute a license to use such products or services, or a warranty or endorsement thereof. Use of TI Resources may require a license from a third party under the patents or other intellectual property of the third party, or a license from TI under the patents or other intellectual property of TI.

TI RESOURCES ARE PROVIDED "AS IS" AND WITH ALL FAULTS. TI DISCLAIMS ALL OTHER WARRANTIES OR REPRESENTATIONS, EXPRESS OR IMPLIED, REGARDING TI RESOURCES OR USE THEREOF, INCLUDING BUT NOT LIMITED TO ACCURACY OR COMPLETENESS, TITLE, ANY EPIDEMIC FAILURE WARRANTY AND ANY IMPLIED WARRANTIES OF MERCHANTABILITY, FITNESS FOR A PARTICULAR PURPOSE, AND NON-INFRINGEMENT OF ANY THIRD PARTY INTELLECTUAL PROPERTY RIGHTS.

TI SHALL NOT BE LIABLE FOR AND SHALL NOT DEFEND OR INDEMNIFY YOU AGAINST ANY CLAIM, INCLUDING BUT NOT LIMITED TO ANY INFRINGEMENT CLAIM THAT RELATES TO OR IS BASED ON ANY COMBINATION OF PRODUCTS EVEN IF DESCRIBED IN TI RESOURCES OR OTHERWISE. IN NO EVENT SHALL TI BE LIABLE FOR ANY ACTUAL, DIRECT, SPECIAL, COLLATERAL, INDIRECT, PUNITIVE, INCIDENTAL, CONSEQUENTIAL OR EXEMPLARY DAMAGES IN CONNECTION WITH OR ARISING OUT OF TI RESOURCES OR USE THEREOF, AND REGARDLESS OF WHETHER TI HAS BEEN ADVISED OF THE POSSIBILITY OF SUCH DAMAGES.

You agree to fully indemnify TI and its representatives against any damages, costs, losses, and/or liabilities arising out of your non-compliance with the terms and provisions of this Notice.

This Notice applies to TI Resources. Additional terms apply to the use and purchase of certain types of materials, TI products and services. These include; without limitation, TI's standard terms for semiconductor products (<http://www.ti.com/sc/docs/stdterms.htm>), [evaluation modules](#), and [samples](http://www.ti.com/sc/docs/sampterm.htm) (<http://www.ti.com/sc/docs/sampterm.htm>).

Mailing Address: Texas Instruments, Post Office Box 655303, Dallas, Texas 75265  
Copyright © 2018, Texas Instruments Incorporated