

# Configuring Code Composer Studio for XML-Defined Devices

---

Dana Smith

## 1.1 Introduction

Historically, drivers exposed register information for each device through the Target Protocol Interface (TPI) layer, which required code changes for every new device. Starting with Code Composer Studio (CCStudio) 3.2, a new approach was taken: a Register Server component can optionally read device-specific XML files that define all the registers for a device.

These XML files are generated by the chip design teams, based on their internal database of registers (ASHA). The files are stored in the <CCStudio install>\drivers\TargetDB folder. Only devices created since CCStudio 3.2 have XML files.

Because the XML files completely define the devices, setting up CCStudio using CCSetup is now partially automated. You can easily pick the appropriate XML file and your device scanchain could be configured for simple devices. Complex devices that include routers may require additional adjustments to the scanchain configuration (see below for an example).

However, CCStudio must associate the appropriate XML file with the configuration loaded through CCSetup. This is accomplished by adding another step to the creation of a device configuration. Note that TPI was not removed, so creating a configuration in the traditional way still works. The steps to create an XML based configuration are shown in [Section 1.2](#), using a DaVinci device as an example.

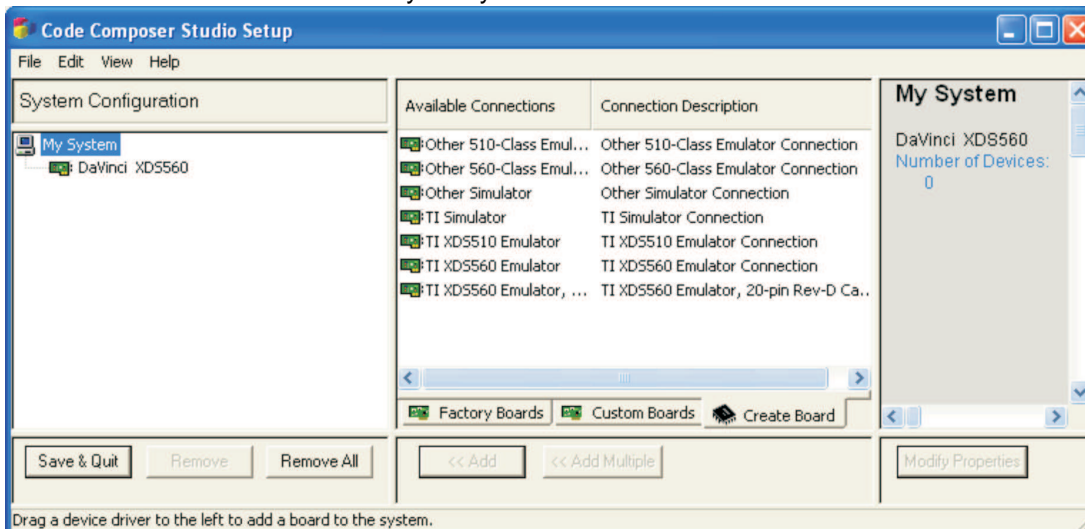
## 1.2 Creating a Connection

To create your new device connection in CCStudio, you must create a new board type in CCSetup.

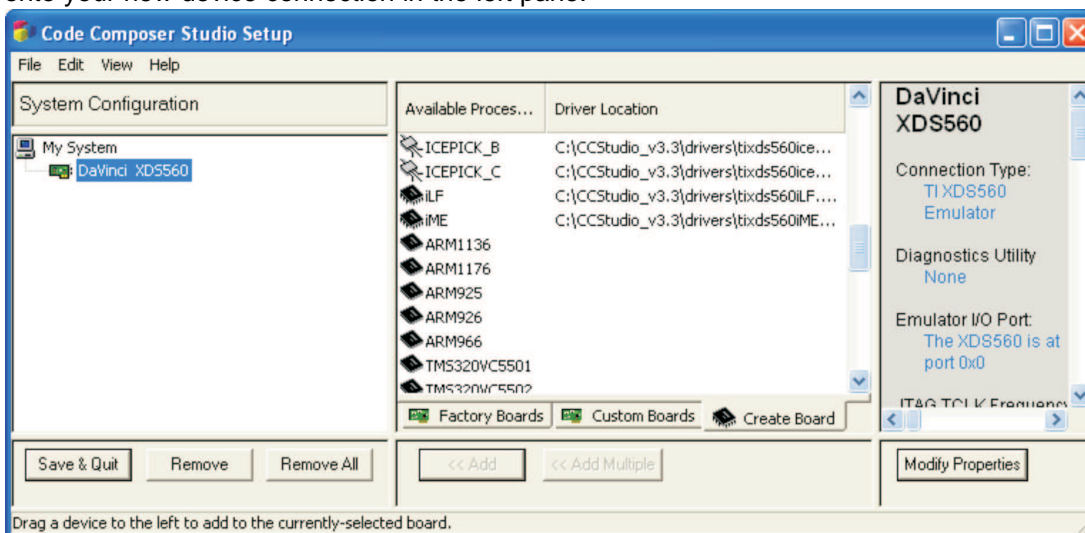
1. Start Code Composer Studio Setup by double-clicking on the Setup CCStudio desktop icon, or by selecting Start→Programs→Texas Instruments→Code Composer Studio→Setup Code Composer Studio.
2. Select the the Create Board tab in the middle pane.
3. From the list of Available Connections, select the configuration that matches your system. This example uses the TI XDS560 Emulator. Click Add to move it to your system list.

## Creating a Connection

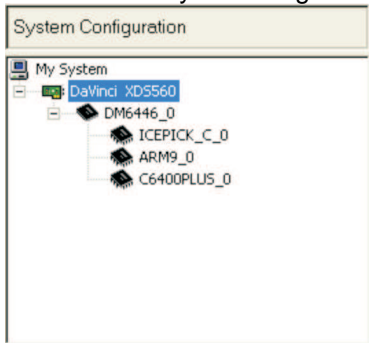
4. A dialog appears, asking you to name the new connection. Name it DaVinci XDS560 and click on Finish to create the connection in your system list.



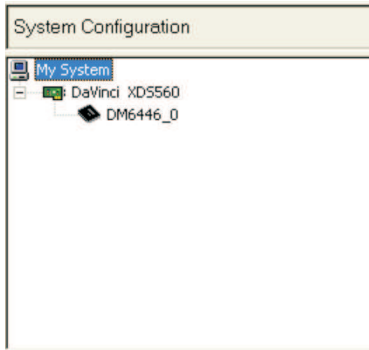
5. In your system list, click on the new connection and then scroll to the bottom of the Available Processor Types in the middle pane. Note that there are two types of Available Processor Types. The original core drivers list a Driver Location next to the processor. The entries with no Driver Location represent the new Device XML files. Select one of the Device XML files (such as DM6446) and drop it onto your new device setup connection in the left pane.



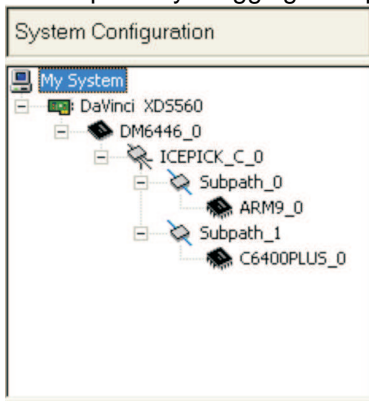
- CCSetup now parses the XML file, which brings up the configuration dialogs for each of the identified cores. In this example, an ICEPick device is found first, followed by an ARM9. As CCStudio currently does not distinguish between a C64x and a C64x+ core, an additional dialog appears for you to select the appropriate driver. DaVinci is C64x+ based, so choose the C6400PLUS driver from the list and click OK. Now your configuration looks like this:



- As CCSetup currently does not handle routers (like ICEPick), you must delete the three processor cores from this configuration. Do not erase the DM6446\_0 processor that ties the configuration to the XML file.



- Finally, select the DM6446\_0 processor and add the ICEPick and the other cores back in from the middle pane by dragging the appropriate drivers from the middle pane onto the DM6446\_0 device.



Your configuration is now complete, and you can launch CCStudio by choosing Start Code Composer Studio from the File menu.

## IMPORTANT NOTICE

Texas Instruments Incorporated and its subsidiaries (TI) reserve the right to make corrections, modifications, enhancements, improvements, and other changes to its products and services at any time and to discontinue any product or service without notice. Customers should obtain the latest relevant information before placing orders and should verify that such information is current and complete. All products are sold subject to TI's terms and conditions of sale supplied at the time of order acknowledgment.

TI warrants performance of its hardware products to the specifications applicable at the time of sale in accordance with TI's standard warranty. Testing and other quality control techniques are used to the extent TI deems necessary to support this warranty. Except where mandated by government requirements, testing of all parameters of each product is not necessarily performed.

TI assumes no liability for applications assistance or customer product design. Customers are responsible for their products and applications using TI components. To minimize the risks associated with customer products and applications, customers should provide adequate design and operating safeguards.

TI does not warrant or represent that any license, either express or implied, is granted under any TI patent right, copyright, mask work right, or other TI intellectual property right relating to any combination, machine, or process in which TI products or services are used. Information published by TI regarding third-party products or services does not constitute a license from TI to use such products or services or a warranty or endorsement thereof. Use of such information may require a license from a third party under the patents or other intellectual property of the third party, or a license from TI under the patents or other intellectual property of TI.

Reproduction of information in TI data books or data sheets is permissible only if reproduction is without alteration and is accompanied by all associated warranties, conditions, limitations, and notices. Reproduction of this information with alteration is an unfair and deceptive business practice. TI is not responsible or liable for such altered documentation.

Resale of TI products or services with statements different from or beyond the parameters stated by TI for that product or service voids all express and any implied warranties for the associated TI product or service and is an unfair and deceptive business practice. TI is not responsible or liable for any such statements.

TI products are not authorized for use in safety-critical applications (such as life support) where a failure of the TI product would reasonably be expected to cause severe personal injury or death, unless officers of the parties have executed an agreement specifically governing such use. Buyers represent that they have all necessary expertise in the safety and regulatory ramifications of their applications, and acknowledge and agree that they are solely responsible for all legal, regulatory and safety-related requirements concerning their products and any use of TI products in such safety-critical applications, notwithstanding any applications-related information or support that may be provided by TI. Further, Buyers must fully indemnify TI and its representatives against any damages arising out of the use of TI products in such safety-critical applications.

TI products are neither designed nor intended for use in military/aerospace applications or environments unless the TI products are specifically designated by TI as military-grade or "enhanced plastic." Only products designated by TI as military-grade meet military specifications. Buyers acknowledge and agree that any such use of TI products which TI has not designated as military-grade is solely at the Buyer's risk, and that they are solely responsible for compliance with all legal and regulatory requirements in connection with such use.

TI products are neither designed nor intended for use in automotive applications or environments unless the specific TI products are designated by TI as compliant with ISO/TS 16949 requirements. Buyers acknowledge and agree that, if they use any non-designated products in automotive applications, TI will not be responsible for any failure to meet such requirements.

Following are URLs where you can obtain information on other Texas Instruments products and application solutions:

<b>Products</b>		<b>Applications</b>	
Amplifiers	<a href="http://amplifier.ti.com">amplifier.ti.com</a>	Audio	<a href="http://www.ti.com/audio">www.ti.com/audio</a>
Data Converters	<a href="http://dataconverter.ti.com">dataconverter.ti.com</a>	Automotive	<a href="http://www.ti.com/automotive">www.ti.com/automotive</a>
DSP	<a href="http://dsp.ti.com">dsp.ti.com</a>	Broadband	<a href="http://www.ti.com/broadband">www.ti.com/broadband</a>
Interface	<a href="http://interface.ti.com">interface.ti.com</a>	Digital Control	<a href="http://www.ti.com/digitalcontrol">www.ti.com/digitalcontrol</a>
Logic	<a href="http://logic.ti.com">logic.ti.com</a>	Military	<a href="http://www.ti.com/military">www.ti.com/military</a>
Power Mgmt	<a href="http://power.ti.com">power.ti.com</a>	Optical Networking	<a href="http://www.ti.com/opticalnetwork">www.ti.com/opticalnetwork</a>
Microcontrollers	<a href="http://microcontroller.ti.com">microcontroller.ti.com</a>	Security	<a href="http://www.ti.com/security">www.ti.com/security</a>
Low Power Wireless	<a href="http://www.ti.com/lpw">www.ti.com/lpw</a>	Telephony	<a href="http://www.ti.com/telephony">www.ti.com/telephony</a>
		Video & Imaging	<a href="http://www.ti.com/video">www.ti.com/video</a>
		Wireless	<a href="http://www.ti.com/wireless">www.ti.com/wireless</a>

Mailing Address: Texas Instruments, Post Office Box 655303, Dallas, Texas 75265  
Copyright © 2007, Texas Instruments Incorporated