

Register View in SmartRF® Studio

By Øyvind Kjernli

Keywords

- *SmartRF® Studio*
- *Register View*
- *Link*

1 Introduction

This design note describes how the register view in SmartRF® Studio can be

used to change specific registers of the connected CCxxxx device.

2 Abbreviations

EB	Evaluation Board
EM	Evaluation Module

Table of Contents

KEYWORDS.....	1
1 INTRODUCTION.....	1
2 ABBREVIATIONS.....	1
3 HOW TO SET UP A LINK USING CUSTOMIZED REGISTER SETTINGS	3
4 GENERAL INFORMATION	6
4.1 DOCUMENT HISTORY.....	6
5 IMPORTANT NOTICE	7

3 How to set up a Link Using Customized Register Settings

Two EB boards equipped with EM modules can be connected to one PC and a link between the two boards can be set up.

Select the “SmartRF® 04 DK” tab. The two connected devices should appear as shown in Figure 1. It will be shown with the chip name and “new device” (e.g. CC2511 – new device). Make sure that the USB DID (Device ID) is different for each connected EB. Start one session for each device.

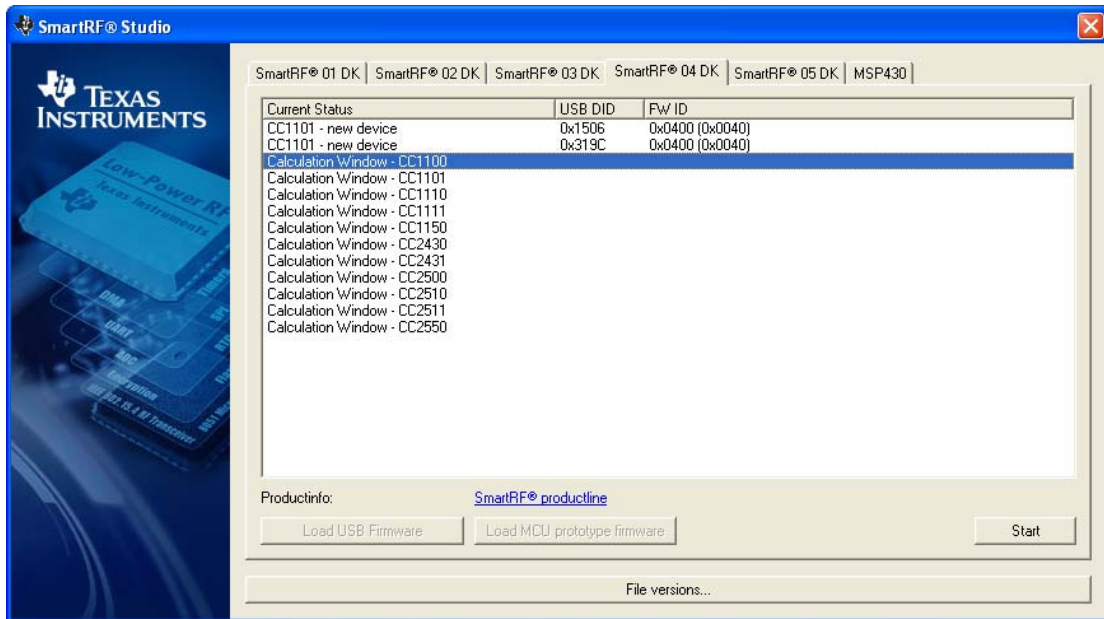


Figure 1. SmartRF® 04 DK Tab

When starting a session the window shown in will be opened.

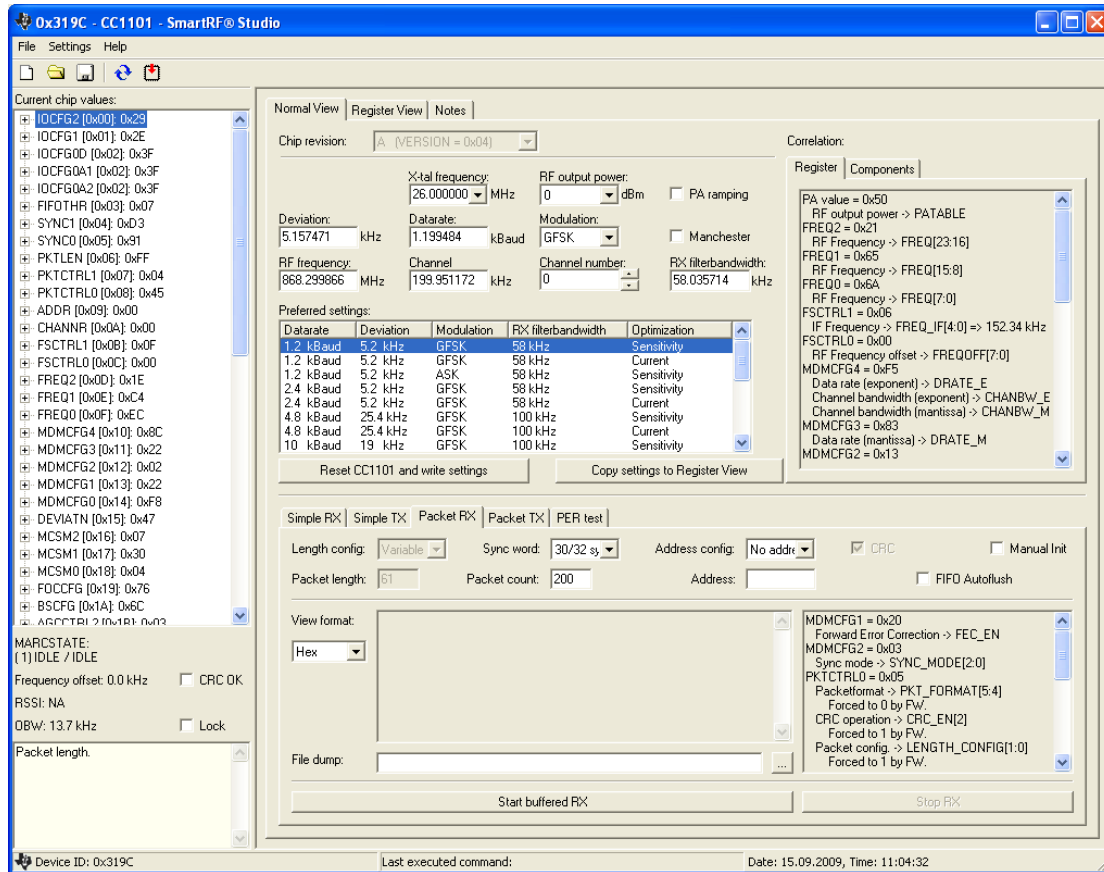


Figure 2, Normal view

Receiver:

- Chose preferred settings in Normal View
- Select "Packet RX" tab
- Start buffered RX

Transmitter:

- Chose preferred settings in Normal View (same as for the receiver)
- Select "Packet TX" tab
- Start buffered TX

To use customized register settings, the following steps will apply both for the receiver and the transmitter:

- Chose preferred settings in normal View
- Reset and write settings to the chip Reset CC1100 and write settings
- Copy settings to register view Copy settings to Register View
- Select manual init Manual Init
- Go to register view and change the required registers
- Return to normal view and start the test

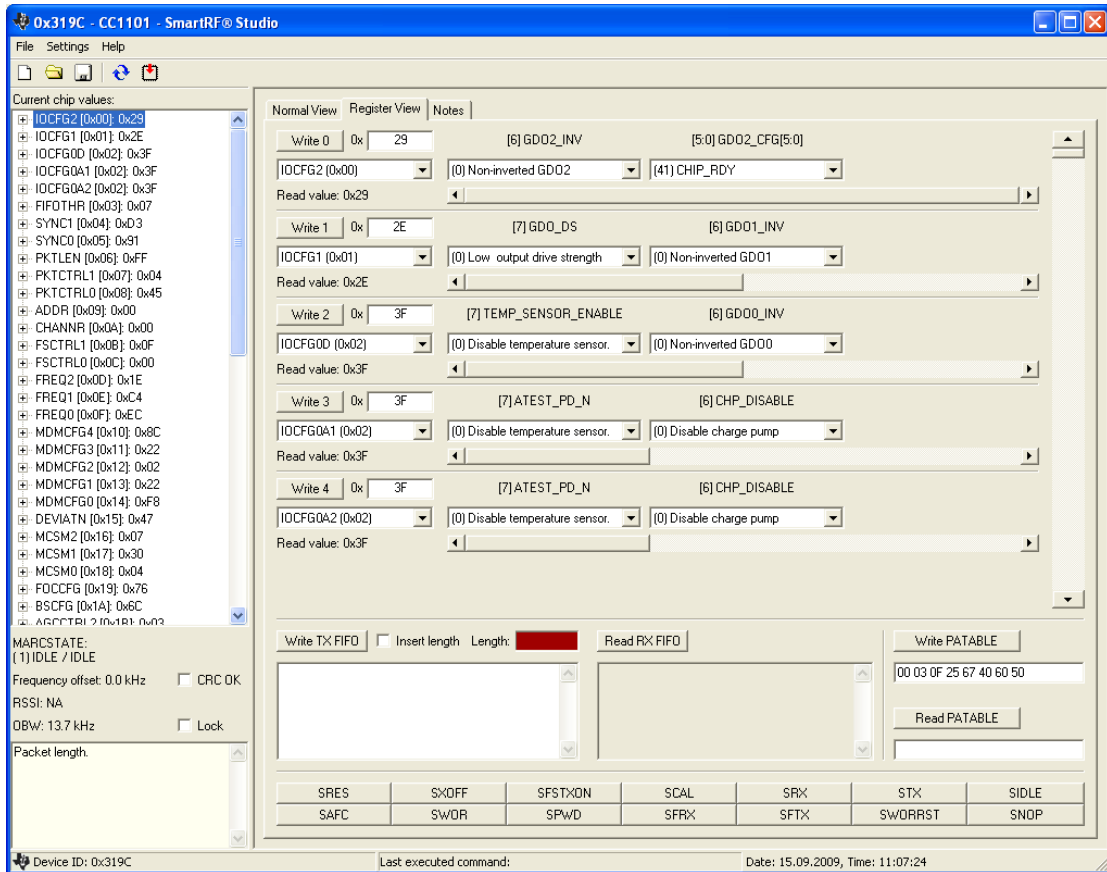


Figure 3, Register view

4 General Information

4.1 Document History

Revision	Date	Description/Changes
SWRA107	2006.07.06	Initial release.
SWRA107A	2009.09.15	Screen shots have been updated.

5 Important Notice

Texas Instruments Incorporated and its subsidiaries (TI) reserve the right to make corrections, modifications, enhancements, improvements, and other changes to its products and services at any time and to discontinue any product or service without notice. Customers should obtain the latest relevant information before placing orders and should verify that such information is current and complete. All products are sold subject to TI's terms and conditions of sale supplied at the time of order acknowledgment.

TI warrants performance of its hardware products to the specifications applicable at the time of sale in accordance with TI's standard warranty. Testing and other quality control techniques are used to the extent TI deems necessary to support this warranty. Except where mandated by government requirements, testing of all parameters of each product is not necessarily performed. TI assumes no liability for applications assistance or customer product design. Customers are responsible for their products and applications using TI components. To minimize the risks associated with customer products and applications, customers should provide adequate design and operating safeguards.

TI does not warrant or represent that any license, either express or implied, is granted under any TI patent right, copyright, mask work right, or other TI intellectual property right relating to any combination, machine, or process in which TI products or services are used. Information published by TI regarding third-party products or services does not constitute a license from TI to use such products or services or a warranty or endorsement thereof. Use of such information may require a license from a third party under the patents or other intellectual property of the third party, or a license from TI under the patents or other intellectual property of TI.

Reproduction of information in TI data books or data sheets is permissible only if reproduction is without alteration and is accompanied by all associated warranties, conditions, limitations, and notices. Reproduction of this information with alteration is an unfair and deceptive business practice. TI is not responsible or liable for such altered documentation.

Resale of TI products or services with statements different from or beyond the parameters stated by TI for that product or service voids all express and any implied warranties for the associated TI product or service and is an unfair and deceptive business practice. TI is not responsible or liable for any such statements.

Following are URLs where you can obtain information on other Texas Instruments products and application solutions:

Products

Amplifiers	amplifier.ti.com
Data Converters	dataconverter.ti.com
DSP	dsp.ti.com
Interface	interface.ti.com
Logic	logic.ti.com
Power Mgmt	power.ti.com
Microcontrollers	microcontroller.ti.com
Low Power Wireless	www.ti.com/lpw

Applications

Audio	www.ti.com/audio
Automotive	www.ti.com/automotive
Broadband	www.ti.com/broadband
Digital Control	www.ti.com/digitalcontrol
Military	www.ti.com/military
Optical Networking	www.ti.com/opticalnetwork
Security	www.ti.com/security
Telephony	www.ti.com/telephony
Video & Imaging	www.ti.com/video
Wireless	www.ti.com/wireless

Mailing Address: Texas Instruments
Post Office Box 655303 Dallas, Texas 75265

© 2006, Texas Instruments. All rights reserved.