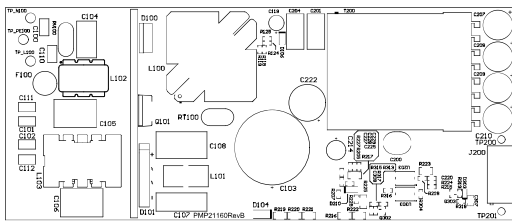
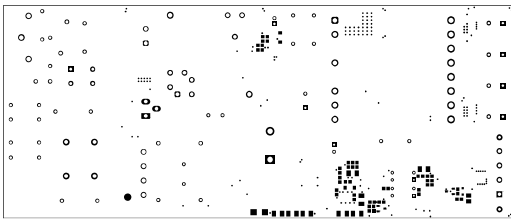


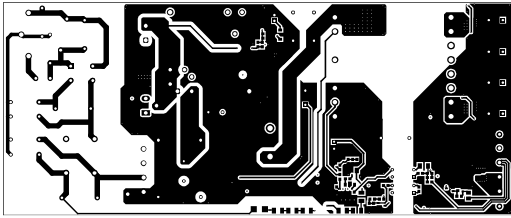
PMP22087 was built using PMP21160 Rev B



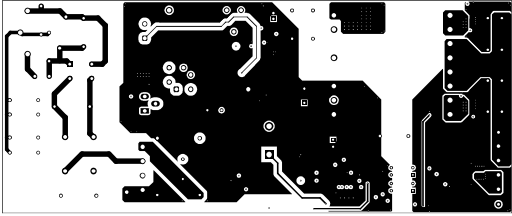
ALL NETWORK VIEWED FROM TOP SIDE	BOARD #: PMP21160	REV: B	SAN: REV: Not In UserControl
LAYER NAME = Top OverLay	TID #: N/A		
PLOT NAME = Top OverLay	GENERATED: 1/10/24/2018 10:36:50 AM		TEXAS INSTRUMENTS



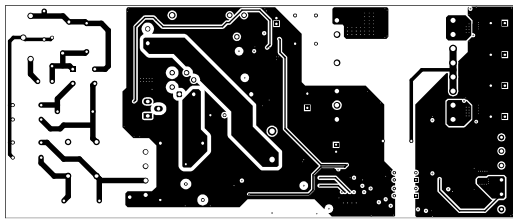
ALL NETWORK VIEWED FROM TOP SIDE	BOARD #: PPR2162	REV: B	SAN REV: Not In VersionControl
LAYER NAME = Top Solder	TID #: N/A		
PLOT NAME = Top Solder Mask	GENERATED: 1/10/24/2018 10:36:52 AM		TEXAS INSTRUMENTS



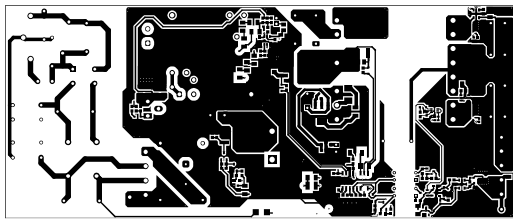
ALL NETWORK VIEWED FROM TOP SIDE	BOARD #: PPR2162	REV: B	SAN REV: Not In VersionControl
LAYER NAME = Top Layer	TID #: N/A		
PLOT NAME = Top Layer	GENERATED: 1/10/24/2018 10:36:54 AM		TEXAS INSTRUMENTS



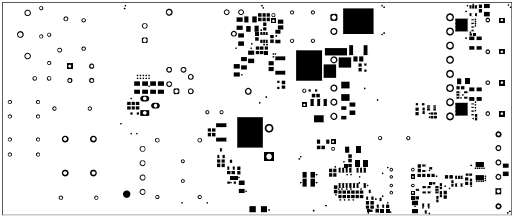
ALL NETWORK VIEWED FROM TOP SIDE	BOARD #: PPR2162	REV: B	SAN REV: Not In VersionControl
LAYER NAME =	TID #: N/A		
PLOT NAME = Signal Layer 1	GENERATED: 1/10/24/2018 10:36:55 AM		TEXAS INSTRUMENTS



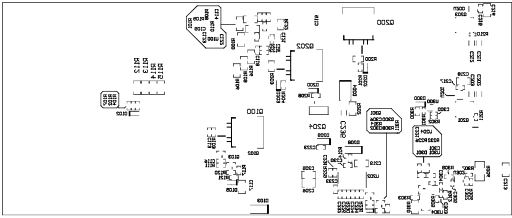
ALL NETWORK VIEWED FROM TOP SIDE	BOARD #: PPR2162	REV: B	SAN REV: Not In VersionControl
LAYER NAME =	TID #: N/A		
PLOT NAME = Signal Layer 2	GENERATED: 1/10/24/2018 10:36:57 AM		TEXAS INSTRUMENTS



ALL NETWORK VIEWED FROM TOP SIDE	BOARD #: PPR2162	REV: B	SAN_DIEGO Net In VersterCentral
LAYER NAME = Bottom Layer	TID #: N/A		
PLOT NAME = Bottom Layer	GENERATED: 1/10/24/2018 10:36:58 AM		TEXAS INSTRUMENTS

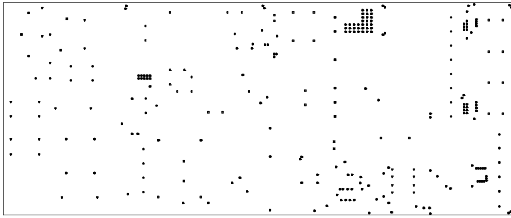


ALL NETWORK VIEWED FROM TOP SIDE	BOARD #: PPR2162	REV: B	SAN REV: Not In VersionControl
LAYER NAME = Bottom Solder	TID #: N/A		
PLOT NAME = Bottom Solder Mask	GENERATED: 1/10/24/2018 10:36:59 AM		TEXAS INSTRUMENTS

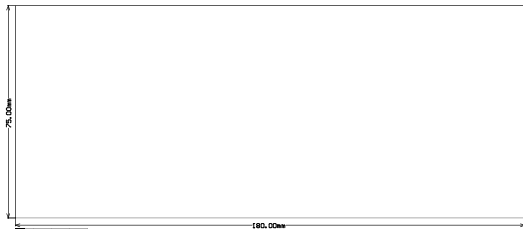


ALL NETWORK VIEWED FROM TOP SIDE	BOARD #: PPR2160	REV: B	SN: REV: Not In VersionControl
LAYER NAME = Bottom Overlay	TID #: N/A		
PLOT NAME = Bottom Overlay	GENERATED: 1/10/24/2008 10:37:00 AM		TEXAS INSTRUMENTS

Symbol	Count	Hole Size	Plated	Hole Type	Drill	Layer Pair	Via/Pad	Pad Shape	Template	Description	Hole Tolerance (<-)	Hole Tolerance (->)
O	2	35.37x1 (±.000mm)	PTH	Round		Top Layer - Bottom Layer	Pad	Rounded	c150x100			
M	2	41.34x1 (±.000mm)	PTH	Round		Top Layer - Bottom Layer	Pad	Rounded	c150x100			
X	2	43.35x1 (±.100mm)	PTH	Round		Top Layer - Bottom Layer	Pad	Rounded	c150x110			
E	2	55.12x1 (±.400mm)	PTH	Round		Top Layer - Bottom Layer	Pad	(Fluxed)	(Fluxed)			
D	2	45.02x1 (±.950mm)	PTH	Round		Top Layer - Bottom Layer	Pad	Rounded	c239x199(Tol3-3)	1.18mil (0.030mm)	1.18mil (0.030mm)	
*	2	75.74x1 (±.000mm)	PTH	Round		Top Layer - Bottom Layer	Pad	(Fluxed)	(Fluxed)			
■	3	63.00x1 (±.600mm)	PTH	Round		Top Layer - Bottom Layer	Pad	Rounded	c221x160			
XI	4	25.53x1 (±.750mm)	PTH	Round		Top Layer - Bottom Layer	Pad	(Fluxed)	(Fluxed)			
O	4	45.21x1 (±.200mm)	PTH	Round		Top Layer - Bottom Layer	Pad	(Fluxed)	(Fluxed)			
O	4	50.00x1 (±.200mm)	PTH	Round		Top Layer - Bottom Layer	Pad	(Fluxed)	(Fluxed)			
●	4	50.00x1 (±.300mm)	PTH	Round		Top Layer - Bottom Layer	Pad	Rounded	c200x130			
A	4	50.00x1 (±.500mm)	PTH	Round		Top Layer - Bottom Layer	Pad	Rounded	c200x150			
o	5	40.00x1 (±.060mm)	PTH	Round		Top Layer - Bottom Layer	Pad	(Fluxed)	(Fluxed)			
■	6	40.89x1 (±.600mm)	PTH	Round		Top Layer - Bottom Layer	Pad	(Fluxed)	(Fluxed)	1.18mil (0.030mm)	1.18mil (0.030mm)	
Y	8	25.10x1 (±.050mm)	PTH	Round		Top Layer - Bottom Layer	Pad	(Fluxed)	(Fluxed)			
O	8	75.87x1 (±.800mm)	PTH	Round		Top Layer - Bottom Layer	Pad	Rounded	c270x180(Tol3-3)	1.18mil (0.030mm)	1.18mil (0.030mm)	
C	9	55.18x1 (±.300mm)	PTH	Round		Top Layer - Bottom Layer	Pad	(Fluxed)	(Fluxed)			
Y	18	35.43x1 (±.050mm)	PTH	Round		Top Layer - Bottom Layer	Pad	Rounded	(Fluxed)	1.18mil (0.030mm)	1.18mil (0.030mm)	
□	22	33.47x1 (±.850mm)	PTH	Round		Top Layer - Bottom Layer	Pad	(Fluxed)	(Fluxed)			
B	16'	10.00x1 (±.250mm)	PTH	Round		Top Layer - Bottom Layer	Via	Rounded	v51x25			
379 Total												



ALL NETWORK VIEWED FROM TOP SIDE	BOARD #: PPR2160	REV: B	SN: Rev Not In VersionControl
LAYER NAME = Dr11 Drawing	TID #: N/A		
PLOT NAME = Dr11 Drawing	GENERATED: 1/10/24/2018 10:37:03 AM		TEXAS INSTRUMENTS



ALL NETWORK VIEWED FROM TOP SIDE	BOARD #: PPR2162	REV: B	SMA REV: Not In VersionControl
LAYER NAME = PD Board Dimensions	TID #: N/A		
PLOT NAME = Board Dimensions	GENERATED: 1/10/24/2018 10:37:05 AM		TEXAS INSTRUMENTS

IMPORTANT NOTICE AND DISCLAIMER

TI PROVIDES TECHNICAL AND RELIABILITY DATA (INCLUDING DATASHEETS), DESIGN RESOURCES (INCLUDING REFERENCE DESIGNS), APPLICATION OR OTHER DESIGN ADVICE, WEB TOOLS, SAFETY INFORMATION, AND OTHER RESOURCES "AS IS" AND WITH ALL FAULTS, AND DISCLAIMS ALL WARRANTIES, EXPRESS AND IMPLIED, INCLUDING WITHOUT LIMITATION ANY IMPLIED WARRANTIES OF MERCHANTABILITY, FITNESS FOR A PARTICULAR PURPOSE OR NON-INFRINGEMENT OF THIRD PARTY INTELLECTUAL PROPERTY RIGHTS.

These resources are intended for skilled developers designing with TI products. You are solely responsible for (1) selecting the appropriate TI products for your application, (2) designing, validating and testing your application, and (3) ensuring your application meets applicable standards, and any other safety, security, or other requirements. These resources are subject to change without notice. TI grants you permission to use these resources only for development of an application that uses the TI products described in the resource. Other reproduction and display of these resources is prohibited. No license is granted to any other TI intellectual property right or to any third party intellectual property right. TI disclaims responsibility for, and you will fully indemnify TI and its representatives against, any claims, damages, costs, losses, and liabilities arising out of your use of these resources.

TI's products are provided subject to TI's Terms of Sale (www.ti.com/legal/termsofsale.html) or other applicable terms available either on ti.com or provided in conjunction with such TI products. TI's provision of these resources does not expand or otherwise alter TI's applicable warranties or warranty disclaimers for TI products.

Mailing Address: Texas Instruments, Post Office Box 655303, Dallas, Texas 75265
Copyright © 2019, Texas Instruments Incorporated