

# LM4921 Boomer® Audio Power Amplifier Series Low Voltage I<sup>2</sup>S 16-Bit Stereo DAC with Stereo Headphone Power Amplifiers and Volume Control

Check for Samples: [LM4921](#)

## FEATURES

- 16-Bit Resolution Stereo DAC
- I<sup>2</sup>S Digital Audio Data Serial Interface
- SPI Serial Interface (Control Register)
- Volume Control (32 steps; 1.5 dB Increments)
- Up to 50mW/Channel Stereo Headphone Amplifier
- Zero Crossing Detection for Silent Attenuation Steps
- 2.6V<sub>DC</sub> to 5.0V<sub>DC</sub> Digital Supply Voltage Range
- 2.6V<sub>DC</sub> to 5.5V<sub>DC</sub> Analog Supply Voltage Range (See <sup>(1)</sup>)
- Unity-Gain Stable Headphone Amplifiers
- Available in the 20-bump DSBGA Package

## KEY SPECIFICATIONS

- PSRR at 217Hz, A/DV<sub>DD</sub> = 3V, (See [Figure 1](#)): 52dB (typ)
  - P<sub>OUT</sub> at AV<sub>DD</sub> = 3.0V, 32Ω
    - < 0.05% THD: 13mW (typ)
    - < 0.05% THD: 26mW (typ)
  - Supply Voltage Range
    - DV<sub>DD</sub>: 2.6V to 5.0V
    - AV<sub>DD</sub>: (See <sup>(1)</sup>) 2.6V to 5.5V
  - Shutdown Current: 1μA (typ)
- (1) Best operation is achieved by maintaining 3.0V ≤ AV<sub>DD</sub> ≤ 5.0V and 3.0V ≤ DV<sub>DD</sub> ≤ 5.0V.

## APPLICATIONS

- Mobile Phones
- PDAs
- Portable Electronic Devices

## DESCRIPTION

The LM4921 combines a 16-bit resolution stereo I<sup>2</sup>S input digital-to-analog converter (DAC) with a stereo headphone audio power amplifier. It is primarily designed for demanding applications in mobile phones and other portable communication device applications. The LM4921 features an I<sup>2</sup>S serial interface for the digital audio information and a 16-bit SPI serial interface for internal register control and communication. With AV<sub>DD</sub> and DV<sub>DD</sub> = 3.0V<sub>DC</sub> and driving a 32Ω single-ended load to a 26mW<sub>RMS</sub> output level the distortion (THD+N) of the LM4921 will be less than 0.5%. The LM4921 also features a programmable 32-step digital volume control accessed through an SPI interface.

Boomer audio power amplifiers were designed specifically to provide high quality output power with a minimal amount of external components. It is, therefore, ideally suited for mobile phone and other low voltage applications where minimal power consumption is a primary requirement.

The LM4921 features a low-power consumption shutdown mode, and also has an internal thermal shutdown protection mechanism.



Please be aware that an important notice concerning availability, standard warranty, and use in critical applications of Texas Instruments semiconductor products and disclaimers thereto appears at the end of this data sheet.

All trademarks are the property of their respective owners.

Typical Application

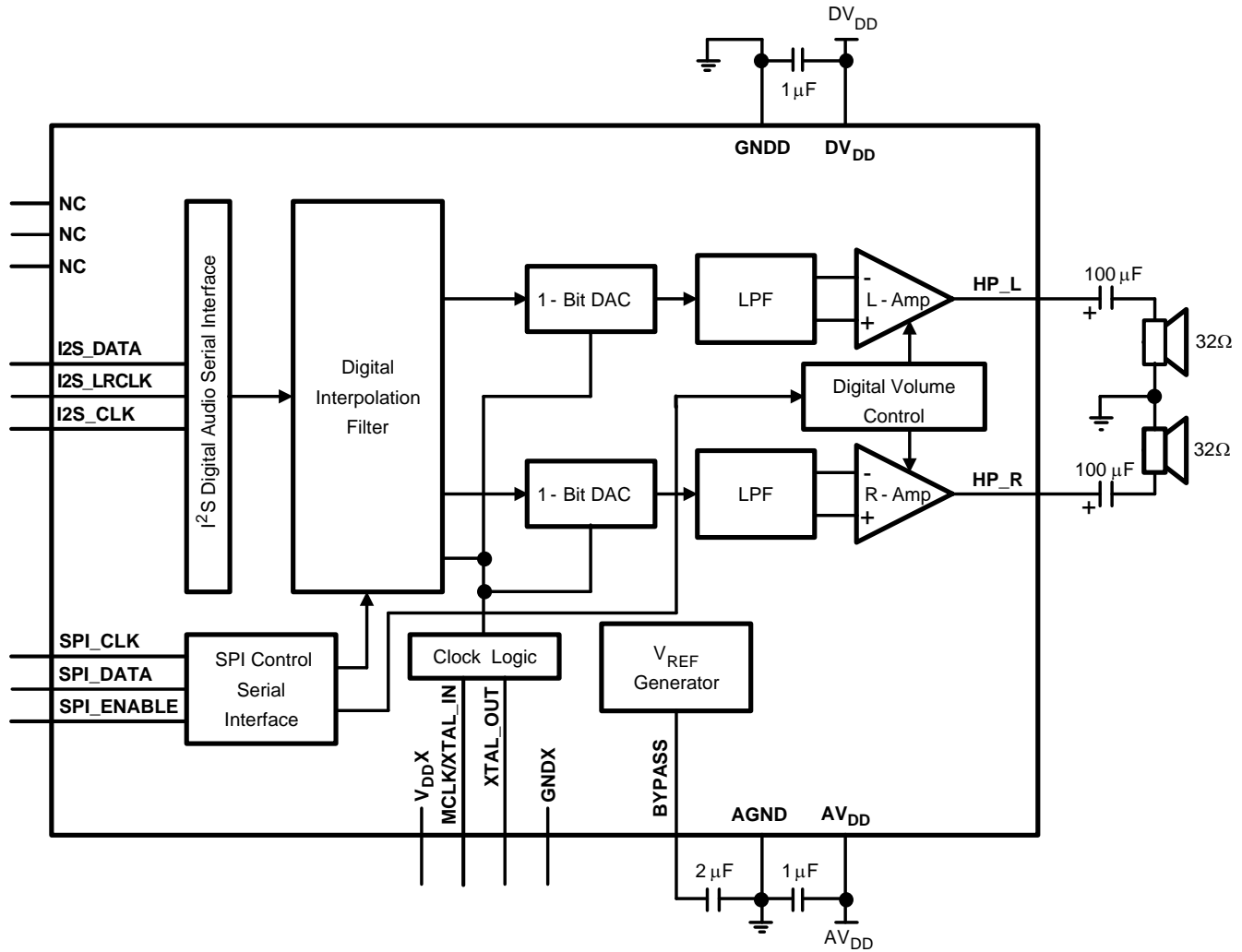
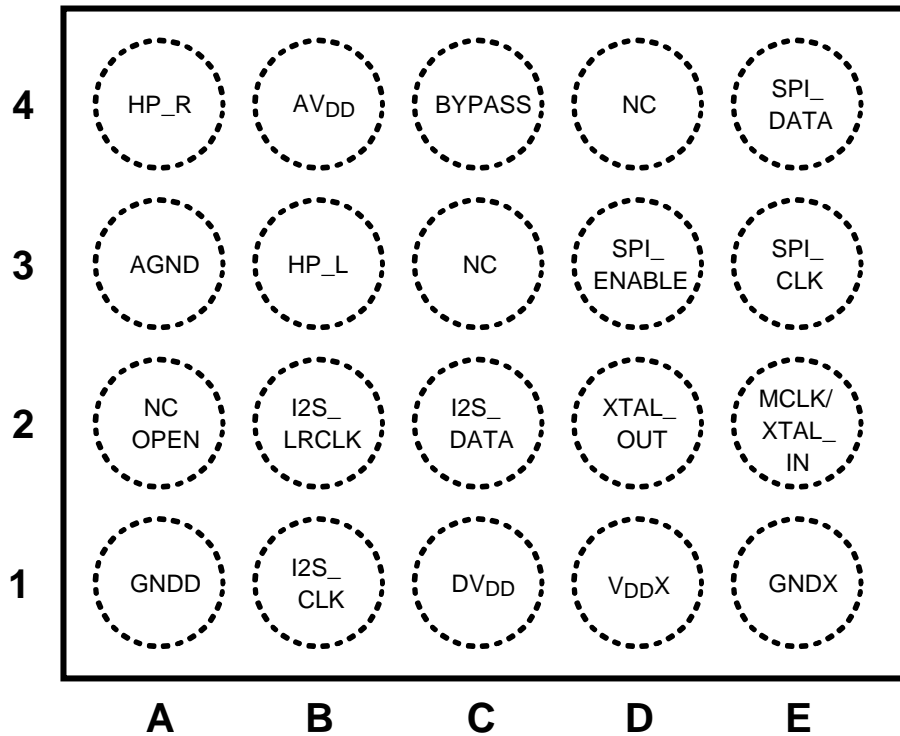


Figure 1. Typical Audio Amplifier Application Circuit

Connection Diagrams



(1) NC - No Connection

Figure 2. LM4921 20-Bump DSBGA Pin Configuration – Top View  
See Package Number YZR0020

## LM4921 I/O PIN DESCRIPTIONS

PIN # (ITL)	PIN NAME	PIN TYPE Input-I, Output-O, Power-P, No Connect- NC	PIN DESCRIPTION
B1	I2S_CLK	I/O	I2S Clock
C2	I2S_DATA	I	I2S data
B2	I2S_WS	I/O	I2S L/R word select
E3	SPI_CLK	I	SPI clock
E4	SPI_DATA	I	SPI data
D3	SPI_ENABLE	I	SPI Enable
E2	MCLK/XTAL_IN	I	Master Clock / Xtal input
D2	XTAL_OUT	O	Xtal output
C4	BYPASS	I/O	Analog VDD/2 bypass capacitor connection point
B4	AV <sub>DD</sub>	P	Analog supply
A3	AGND	P	Analog Ground
C1	DV <sub>DD</sub>	P	Digital Supply
A1	GNDD	P	Digital ground
D1	VDDX	P	XTAL Oscillator circuit supply
E1	GNDX	P	XTAL Oscillator circuit ground
B3	HP_L	O	HP left output
A4	HP_R	O	HP right output
A2	No Connect	O	Must let float
C3	No Connect	NC	NC
D4	No Connect	NC	NC



These devices have limited built-in ESD protection. The leads should be shorted together or the device placed in conductive foam during storage or handling to prevent electrostatic damage to the MOS gates.

### Absolute Maximum Ratings<sup>(1)(2)</sup>

Supply Voltage		6.0V
Storage Temperature		-65°C to +150°C
Input Voltage		-0.3V to $V_{DD} + 0.3V$
Power Dissipation <sup>(3)</sup>		Internally Limited
ESD Susceptibility	Human body model <sup>(4)</sup>	2000V
	Machine model <sup>(5)</sup>	200V
Junction Temperature		150°C
Thermal Resistance	$\theta_{JA}$	60°C/W

- (1) Absolute Maximum Ratings indicate limits beyond which damage to the device may occur. Operating Ratings indicate conditions for which the device is functional, but do not ensure specific performance limits. Electrical Characteristics state DC and AC electrical specifications under particular test conditions which ensure specific performance limits. This assumes that the device is within the Operating Ratings. Specifications are not ensured for parameters where no limit is given, however, the typical value is a good indication of device performance.
- (2) All voltages are measured with respect to the GND pin, unless otherwise specified.
- (3) The maximum power dissipation must be derated at elevated temperatures and is dictated by  $T_{JMAX}$ ,  $\theta_{JA}$ , and the ambient temperature  $T_A$ . The maximum allowable power dissipation is  $P_{DMAX} = (T_{JMAX} - T_A) / \theta_{JA}$  or the number given in Absolute Maximum Ratings, whichever is lower.
- (4) Human body model, 100pF discharged through a 1.5k $\Omega$  resistor.
- (5) Machine Model, 220pF – 240pF discharged through all pins.

### Operating Ratings

Temperature Range		
$T_{MIN} \leq T_A \leq T_{MAX}$		$-40^\circ\text{C} \leq T_A \leq 85^\circ\text{C}$
Supply Voltage	$DV_{DD}$	$2.6V \leq DV_{DD} \leq 5.0V$
	$AV_{DD}$	$2.6V \leq AV_{DD} \leq 5.5V$

**Electrical Characteristics**  $DV_{DD} = 3.0V$ ,  $AV_{DD} = 5.0V$ ,  $R_L = 32\Omega$ <sup>(1)(2)</sup>

The following specifications apply for the circuit shown in [Figure 1](#) unless otherwise specified. Limits apply for  $T_A = 25^\circ C$ .

Symbol	Parameter	Conditions	LM4921		Units (Limits)
			Typical <sup>(3)</sup>	Limit <sup>(4)(5)</sup>	
$DV_{DD}$	Digital Power Supply Voltage	See <sup>(6)</sup>	3.0		V
$AV_{DD}$	Analog Power Supply Voltage	See <sup>(6)</sup>	5.0		V
$DI_{DD}$	Digital Power Supply Quiescent Current	$R_{Load} = \infty$ , $f_{MCLK} = 11.2896MHz$	3.5	7.5	mA (max)
$AI_{DD}$	Analog Power Supply Quiescent Current	$R_{Load} = \infty$ , $f_{MCLK} = 0MHz$	6	10	mA (max)
$I_{SD}$	Total Shutdown Power Supply Current	SHUTDOWN SPI bits 1 & 2 set to logic 0, SPI, MCLK and I <sup>2</sup> S inputs at GND	1	5	uA(max)
$I_{SB}$	Standby Current	Analog and Digital together All clocks off	25		uA
$V_{FS}$	Full-Scale Output Voltage	Gain set at max	3.5		$V_{P-P}$
THD+N	Total Harmonic Distortion + Noise	$f_{IN} = 1kHz$ , $P_{OUT} = 12mW$ (Vol Control = 11111, I <sup>2</sup> S input adj to get 12mW at output)	0.03		%
$P_O$	Headphone Amplifier Output Power	THD = (0.5%), $f_{OUT} = 1kHz$	50	40	mW (min)
PSRR	Power Supply Rejection Ratio	$AV_{DD} C_{BYPASS} = 2.0\mu F$ $V_{RIPPLE} = 200mV_{P-P} 217Hz$	62	45	dB (min)
SNR	Signal-to-Noise Ratio	$f_{IN} = 1kHz$ sinewave at $-60dB_{FS}$ , A-weighted- $f_{CONV} = 44.1kHz$	82		dB
DR	Dynamic Range	$f_{IN} = 1kHz$ sinewave at $-60dB_{FS}$ , A-weighted	84		dB
$\Delta A_{CH-CH}$	Channel-to-Channel Gain Mismatch	$f_{IN} = 1kHz$	0.06		dB
$X_{TALK}$	Channel-to-Channel Crosstalk	$f_{CONV} = 44.1kHz$ , $f_{IN} = 1kHz$ sinewave at $-3dB_{FS}$	72		dB
	Volume Control Range	Minimum Attenuation Maximum Attenuation	+3.0 -43.5		dB dB
	Volume Control Control Step Size		1.5		dB
	Mute Attenuation		-102		dB

- (1) Absolute Maximum Ratings indicate limits beyond which damage to the device may occur. Operating Ratings indicate conditions for which the device is functional, but do not ensure specific performance limits. Electrical Characteristics state DC and AC electrical specifications under particular test conditions which ensure specific performance limits. This assumes that the device is within the Operating Ratings. Specifications are not ensured for parameters where no limit is given, however, the typical value is a good indication of device performance.
- (2) All voltages are measured with respect to the GND pin, unless otherwise specified.
- (3) Typicals are measured at  $25^\circ C$  and represent the parametric norm.
- (4) Limits are specified to AOQL (Average Outgoing Quality Level).
- (5) Datasheet min/max specification limits are specified by design, test, or statistical analysis.
- (6) Best operation is achieved by maintaining  $3.0V \leq AV_{DD} \leq 5.0V$  and  $3.0V \leq DV_{DD} \leq 5.0V$ .

**Electrical Characteristics  $DV_{DD} = 3.0V$ ,  $AV_{DD} = 3.0V$ ,  $R_L = 32\Omega$ <sup>(1)(2)</sup>**

 The following specifications apply for the circuit shown in [Figure 1](#) unless otherwise specified. Limits apply for  $T_A = 25^\circ C$ .

Symbol	Parameter	Conditions	LM4921		Units (Limits)
			Typical <sup>(3)</sup>	Limit <sup>(4)(5)</sup>	
$DV_{DD}$	Digital Power Supply Voltage	See <sup>(6)</sup>	3.0		V
$AV_{DD}$	Analog Power Supply Voltage	See <sup>(6)</sup>	3.0		V
$DI_{DD}$	Digital Power Supply Quiescent Current	$R_{Load} = \infty$ , $f_{MCLK} = 11.2896MHz$	3.5	7.5	mA (max)
$AI_{DD}$	Analog Power Supply Quiescent Current	$R_{Load} = \infty$ , $f_{MCLK} = 0MHz$	5	9.0	mA (max)
$I_{SD}$	Total Shutdown Power Supply Current	SHUTDOWN SPI bits 1 & 2 set to logic 0, SPI, MCLK and I <sup>2</sup> S inputs at GND	1		uA(max)
$I_{SB}$	Standby Current	Analog and Digital together All clocks off	15		uA
$V_{FS}$	Full-Scale Output Voltage	Gain set at max	2.6		$V_{P-P}$
THD+N	Total Harmonic Distortion + Noise	$f_{IN} = 1kHz$ , $P_{OUT} = 12mW$ (Vol Cont = 11011, I <sup>2</sup> S input adj to get 12mW at output)	0.05		%
$P_O$	Headphone Amplifier Output Power	THD = (0.5%), $f_{OUT} = 1kHz$	26		mW (min)
PSRR	Power Supply Rejection Ratio	$AV_{DD} C_{BYPASS} = 2.0\mu F$ $V_{RIPPLE} = 200mV_{P-P} 217Hz$	52		dB (min)
SNR	Signal-to-Noise Ratio	$f_{IN} = 1kHz$ sinewave at $-60dB_{FS}$ , A-weighted- $f_{CONV} = 44.1kHz$	79		dB
DR	Dynamic Range	$f_{IN} = 1kHz$ sinewave at $-60dB_{FS}$ , A-weighted	81		dB
$\Delta A_{CH-CH}$	Channel-to-Channel Gain Mismatch	$f_{IN} = 1kHz$	0.06		dB
$X_{TALK}$	Channel-to-Channel Crosstalk	$f_{CONV} = 44.1kHz$ , $f_{IN} = 1kHz$ sinewave at $-3dB_{FS}$	72		dB
	Volume Control Range	Minimum Attenuation Maximum Attenuation	0 -43.5		dB dB
	Volume Control Control Step Size		1.5		dB
	Mute Attenuation		-100		dB

- (1) Absolute Maximum Ratings indicate limits beyond which damage to the device may occur. Operating Ratings indicate conditions for which the device is functional, but do not ensure specific performance limits. Electrical Characteristics state DC and AC electrical specifications under particular test conditions which ensure specific performance limits. This assumes that the device is within the Operating Ratings. Specifications are not ensured for parameters where no limit is given, however, the typical value is a good indication of device performance.
- (2) All voltages are measured with respect to the GND pin, unless otherwise specified.
- (3) Typicals are measured at  $25^\circ C$  and represent the parametric norm.
- (4) Limits are specified to AOQL (Average Outgoing Quality Level).
- (5) Datasheet min/max specification limits are specified by design, test, or statistical analysis.
- (6) Best operation is achieved by maintaining  $3.0V \leq AV_{DD} \leq 5.0V$  and  $3.0V \leq DV_{DD} \leq 5.0V$ .

## Electrical Characteristics-Digital Inputs $DV_{DD} = 3.0V^{(1)(2)}$

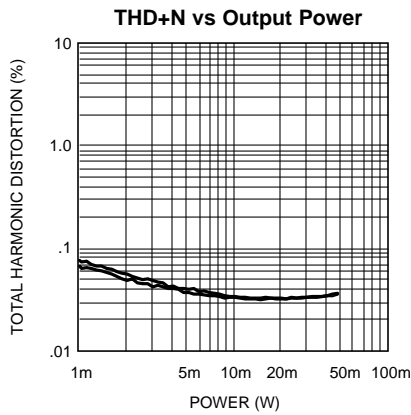
The following specifications apply for the circuit shown in [Figure 1](#) unless otherwise specified. Limits apply for  $T_A = 25^\circ C$ .

Symbol	Parameter	Conditions	LM4921		Units (Limits)
			Typical <sup>(3)</sup>	Limit <sup>(4)(5)</sup>	
	Resolution		16		Bits
I <sup>2</sup> S	Audio Data Interface Format	Standard, I <sup>2</sup> S, Left Justified			
f <sub>MCLK</sub>	Master Clock Frequency		11.2896 (256FS)		MHz
f <sub>CONV</sub>	Sampling Clock Frequency Range		44.1	48	kHz
V <sub>IL</sub>	Digital Input: Logic Low Voltage Level			0.3 X DV <sub>DD</sub>	V (max)
V <sub>IH</sub>	Digital Input: Logic High Voltage Level			0.7 X DV <sub>DD</sub>	V (min)
t <sub>ES</sub>	SPI_ENB Setup Time			20	ns (min)
t <sub>EH</sub>	SPI_ENB Hold Time			20	ns (min)
t <sub>EL</sub>	SPI_ENB Low Time			30	ns (min)
t <sub>DS</sub>	SPI_Data Setup Time			20	ns (min)
t <sub>DH</sub>	SPI_Data Hold Time			20	ns (min)
t <sub>CS</sub>	SPI_CLK Setup Time			20	ns (min)
t <sub>CH</sub>	SPI_CLK High Pulse Width			100	ns (min)
t <sub>CL</sub>	SPI_CLK Low Pulse Width			100	ns (min)
f <sub>CLK</sub>	SPI_CLK Frequency			5	MHz (max)
t <sub>CLKI</sub> <sup>2</sup> S	I <sup>2</sup> S_CLK Period			50	ns (min)
t <sub>HI</sub> <sup>2</sup> S	I <sup>2</sup> S_CLK High Pulse Width			20	ns (min)
t <sub>LO</sub> <sup>2</sup> S	I <sup>2</sup> S_CLK Low Pulse Width			20	ns (min)
	I <sup>2</sup> S_LRCLK Duty Cycle		50		%
t <sub>SLRCLK</sub>	I <sup>2</sup> S_LRCLK to I <sup>2</sup> S_CLK Setup Time			20	ns (min)
t <sub>HLRCLK</sub>	I <sup>2</sup> S_LRCLK to I <sup>2</sup> S_CLK Hold Time			20	ns (min)
t <sub>SDI</sub> <sup>2</sup> S	I <sup>2</sup> S_Data to I <sup>2</sup> S_CLK Setup Time			20	ns (min)
t <sub>HDI</sub> <sup>2</sup> S	I <sup>2</sup> S_Data to I <sup>2</sup> S_CLK Hold Time			20	ns (min)

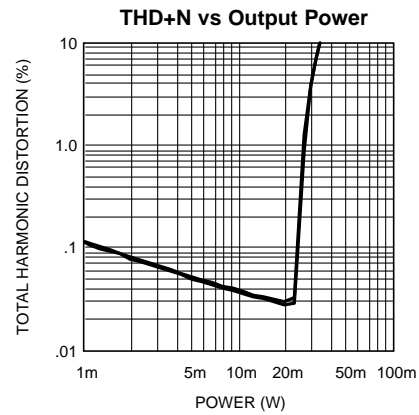
- (1) Absolute Maximum Ratings indicate limits beyond which damage to the device may occur. Operating Ratings indicate conditions for which the device is functional, but do not ensure specific performance limits. Electrical Characteristics state DC and AC electrical specifications under particular test conditions which ensure specific performance limits. This assumes that the device is within the Operating Ratings. Specifications are not ensured for parameters where no limit is given, however, the typical value is a good indication of device performance.
- (2) All voltages are measured with respect to the GND pin, unless otherwise specified.
- (3) Typicals are measured at 25°C and represent the parametric norm.
- (4) Limits are specified to AOQL (Average Outgoing Quality Level).
- (5) Datasheet min/max specification limits are specified by design, test, or statistical analysis.



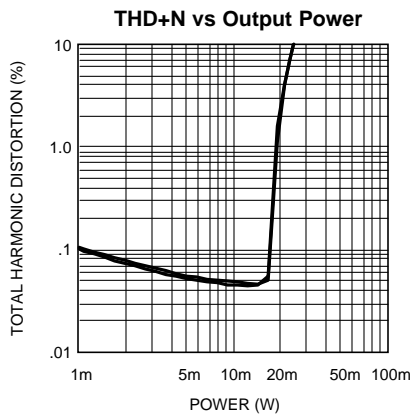
Typical Performance Characteristics



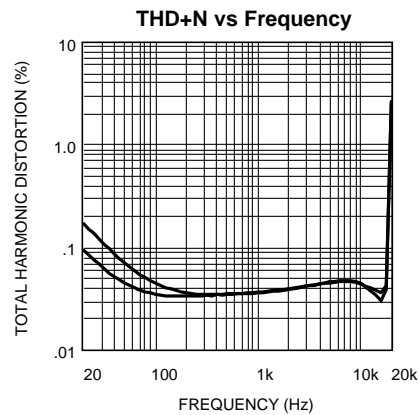
1. Analog  $V_{DD} = 5V$ , Digital  $V_{DD} = 3V$   
 $R_L = 32\Omega$ , 44.1 kHz Sample Rate  
 R & L Channels, Vol = 3dB, Frequency in = 1kHz  
**Figure 3.**



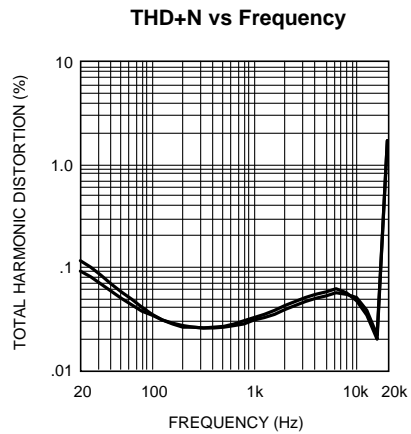
Analog  $V_{DD} = 3V$ , Digital  $V_{DD} = 3V$   
 $R_L = 32\Omega$ , 44.1 kHz Sample Rate R & L Channels Shown  
 Vol = 3dB, Frequency in = 1kHz  
**Figure 4.**



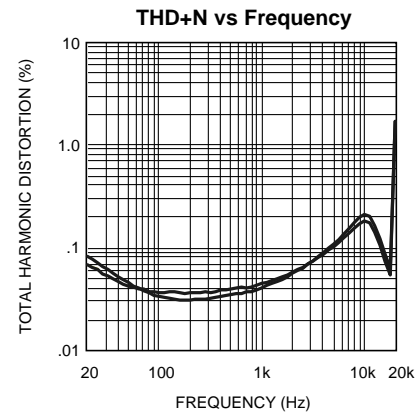
Analog  $V_{DD} = 2.6V$ , Digital  $V_{DD} = 2.6V$   
 $R_L = 32\Omega$ , 4.1 kHz Sample Rate  
 R & L Channels Shown, Vol = 3dB, Frequency in = 1kHz  
**Figure 5.**



Analog  $V_{DD} = 5V$ , Digital  $V_{DD} = 3V$   
 $R_L = 32\Omega$ , Power Level = 50mW,  
 R & L Channels Shown, 44.1kHz Sample Rate  
**Figure 6.**

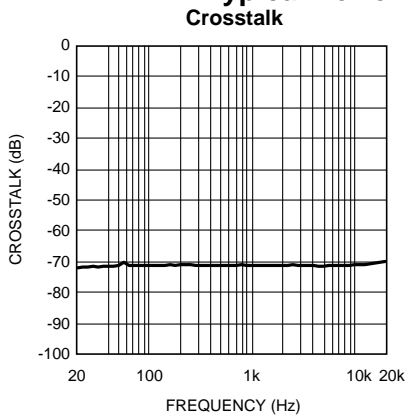


Analog  $V_{DD} = 3V$ , Digital  $V_{DD} = 3V$   
 $R_L = 32\Omega$ , Power Level = 12mW  
 R & L Channels Shown, 44.1kHz Sample Rate  
**Figure 7.**



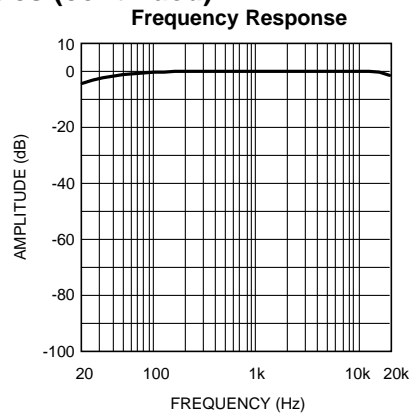
Analog  $V_{DD} = 2.6V$ , Digital  $V_{DD} = 2.6V$   
 $R_L = 32\Omega$ , Power Level = 12mW  
 R & L Channels Shown, 44.1kHz Sample Rate  
**Figure 8.**

**Typical Performance Characteristics (continued)**



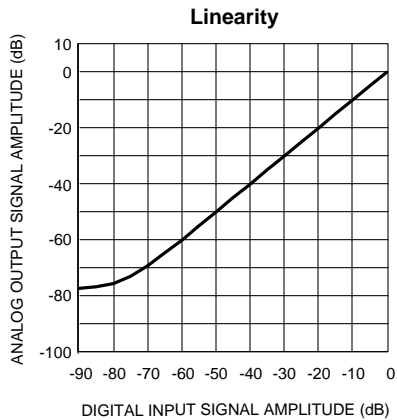
Analog  $V_{DD} = 3V$ , Digital  $V_{DD} = 3V$   
 $R_L = 32\Omega$ ,  $V_{ol} = 3dB$   
 44.1kHz Sample Rate, -3dB FFS

**Figure 9.**



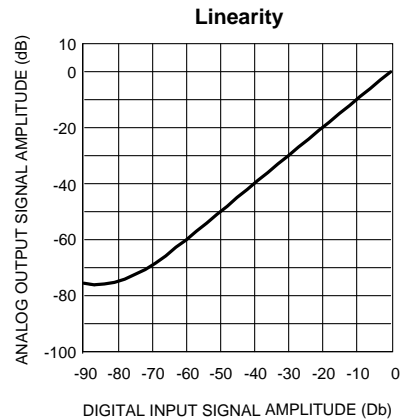
Analog  $V_{DD} = 5V$ , Digital  $V_{DD} = 3V$   
 $R_L = 32\Omega$ ,  $V_{ol} = 0dB$   
 44.1kHz Sample Rate, 0dB FFS

**Figure 10.**



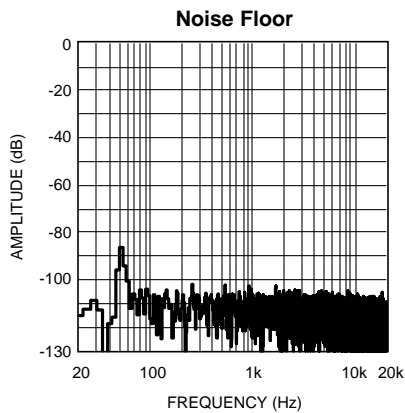
Analog  $V_{DD} = 5V$ , Digital  $V_{DD} = 3V$   
 $R_L = 32\Omega$ , 44.1kHz Sample Rate

**Figure 11.**



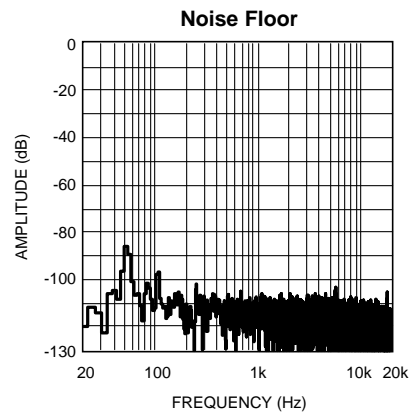
Analog  $V_{DD} = 3V$ , Digital  $V_{DD} = 3V$   
 $R_L = 32\Omega$ , 44.1kHz Sample Rate

**Figure 12.**



Analog  $V_{DD} = 5V$ , Digital  $V_{DD} = 3V$   
 $R_L = 32\Omega$ ,  $V_{ol} = 3dB$   
 44.1kHz Sample Rate

**Figure 13.**

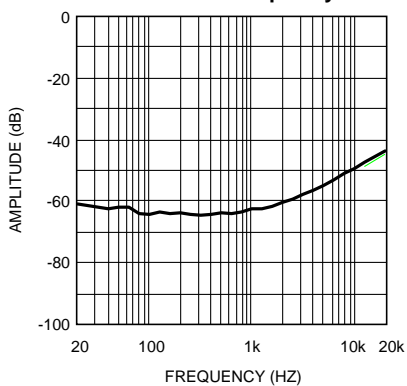


Analog  $V_{DD} = 3V$ , Digital  $V_{DD} = 3V$   
 $R_L = 32\Omega$ ,  $V_{ol} = 0dB$   
 44.1kHz Sample Rate

**Figure 14.**

Typical Performance Characteristics (continued)

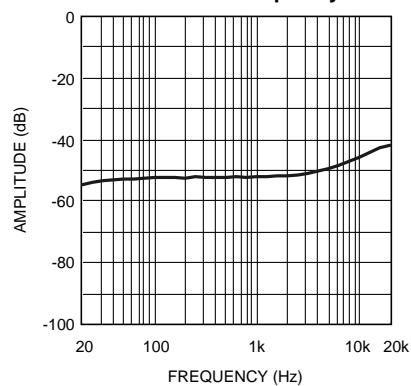
PSRR vs Frequency



Analog  $V_{DD} = 5V$ , Digital  $V_{DD} = 3V$   
 $R_L = 32\Omega$ ,  $V_{ol} = 3dB$   
 44.1kHz Sample Rate

Figure 15.

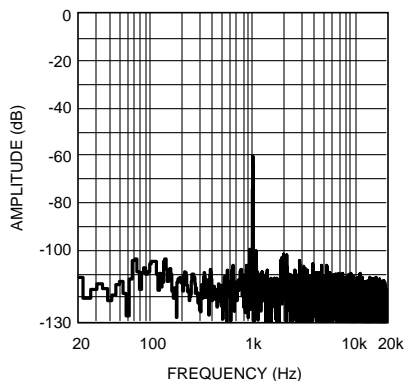
PSRR vs Frequency



Analog  $V_{DD} = 3V$ , Digital  $V_{DD} = 3V$   
 $R_L = 32\Omega$ ,  $V_{ol} = 0dB$   
 44.1kHz Sample Rate

Figure 16.

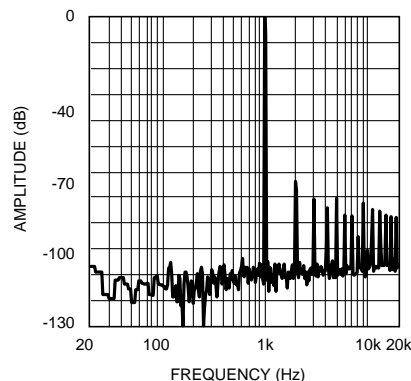
FFT @ 1kHz -60dB



Analog  $V_{DD} = 5V$ , Digital  $V_{DD} = 3V$   
 $R_L = 32\Omega$ ,  $V_{ol} = 3dB$   
 44.1kHz Sample Rate

Figure 17.

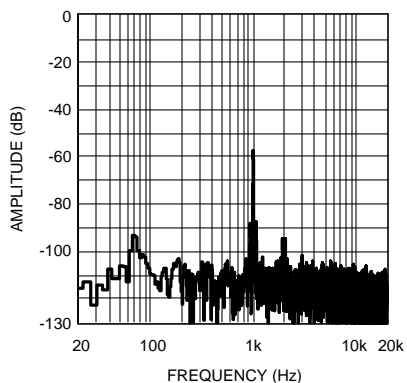
FFT @ 1kHz 0dB



Analog  $V_{DD} = 5V$ , Digital  $V_{DD} = 3V$   
 $R_L = 32\Omega$ ,  $V_{ol} = 3dB$   
 44.1 kHz Sample Rate

Figure 18.

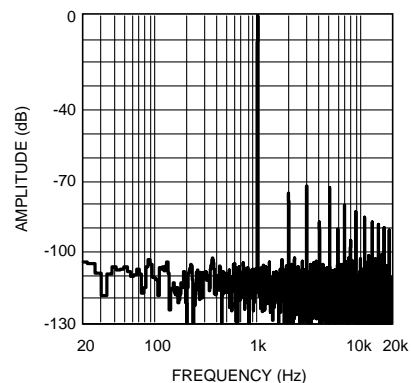
FFT @ 1kHz -60dB



Analog  $V_{DD} = 3V$ , Digital  $V_{DD} = 3V$   
 $R_L = 32\Omega$ ,  $V_{ol} = 0dB$   
 44.1kHz Sample Rate

Figure 19.

FFT @ 1kHz 0dB



Analog  $V_{DD} = 3V$ , Digital  $V_{DD} = 3V$   
 $R_L = 32\Omega$ ,  $V_{ol} = 0dB$   
 44.1kHz Sample Rate

Figure 20.

## APPLICATION INFORMATION

### SPI OPERATIONAL DESCRIPTION

The serial data bits are organized into a field which contains 16 bits of data defined by [Table 1](#). Bits 1 & 2 determine the output mode of the LM4921 as shown in [Table 2](#). Bits 7 through 11 determine the volume level setting as illustrated by [Table 3](#). Bit 12 sets the Bypass capacitor charging time.

**Table 1. Bit Allocation**

BIT #	Default Val	Function	Description
0 (LSB)	0	RESET_B	RESET_B = 0, Resets the DAC Must be high for the part to run.
1	0	MODE CONTROL	See <a href="#">Table 2</a>
2	0		
3	0	MASTER/SLAVE	0 = SLAVE, 1 = MASTER
4	0	RESOLUTION	0 = 16 bit, 1 = 32 bit
5	0	RESERVED	Should always be set to '1'
6	0	ZERO CROSSING SET	0 = ZXD ENABLE, 1 = ZXD DISABLE
7	0	VOLUME CONTROL	See <a href="#">Table 3</a>
8	0		
9	0		
10	0		
11	0		
12	0	BYP CHARGE RATE	0 = 1X, 1 = 2X
13	0	RESERVED	
14	0	RESERVED	
15 (MSB)	0	RESERVED	Should always be set to '0'

### MODE CONTROL

Sets the modes as outlined in [Table 2](#).

**Table 2. Output Mode Selection (Bits 1 & 2 above)**

Output Mode #	BIT 2	BIT 1	MODE
0	0	0	SD
1	0	1	STANDBY
2	1	0	MUTE
3	1	1	ACTIVE

Shutdown turns off the part completely for maximum power savings. The Standby mode turns off the clock but still consumes more power than the shutdown mode. However, coming out of standby mode allows the part to turn back on faster than from shutdown. In Mute mode the clocks remain on which uses more power but allows faster recovery and the ability to supply clock signals to other devices which is important when the part is used in master mode. Active mode turns the part on for normal operation.

### MASTER/SLAVE SELECT

Allows the part to act as a master and supply the clock for the rest of the system or be a slave to the system clock.

### RESOLUTION SET

Sets the resolution to be either 16 or 32 bits of stereo audio information. For most applications this will be set at 16 bits.

## ZERO CROSSING DETECT SET

This pin turns on the zero crossing detection circuit. With this circuit enabled the part will not allow a volume step change, or shutdown mode, or standby mode to occur until the audio input signal passes through zero. This pin should be set to on for most applications.

## VOLUME CONTROL

The internal Stereo Volume Control is set by changing bits 7 through 11 in the SPI interface, as shown in [Table 3](#) below. The zero dB setting is for 3V VDD operation and the +3dB is for 5V VDD.

**Table 3. Volume Control Settings**

Gain (dB) HP_L & HP_R	Bit 11	Bit 10	Bit 9	Bit 8	Bit 7
-43.5	0	0	0	0	0
-42.0	0	0	0	0	1
-40.5	0	0	0	1	0
-39.0	0	0	0	1	1
-37.5	0	0	1	0	0
-36.0	0	0	1	0	1
-34.5	0	0	1	1	0
-33.0	0	0	1	1	1
-31.5	0	1	0	0	0
-30.0	0	1	0	0	1
-28.5	0	1	0	1	0
-27.0	0	1	0	1	1
-25.5	0	1	1	0	0
-24.0	0	1	1	0	1
-22.5	0	1	1	1	0
-21.0	0	1	1	1	1
-19.5	1	0	0	0	0
-18.0	1	0	0	0	1
-16.5	1	0	0	1	0
-15.0	1	0	0	1	1
-13.5	1	0	1	0	0
-12.0	1	0	1	0	1
-10.5	1	0	1	1	0
-9.0	1	0	1	1	1
-7.5	1	1	0	0	0
-6.0	1	1	0	0	1
-4.5	1	1	0	1	0
-3.0	1	1	0	1	1
-1.5	1	1	1	0	0
0.0	1	1	1	0	1
1.5	1	1	1	1	0
3.0	1	1	1	1	1

## BYPASS CHARGE RATE BIT 12

This control pin allows the user to change the Bypass Capacitor's charge rate by a factor of two. Setting this bit at zero will set the circuit to its normal 1x rate. Setting the bit to High will double the charge rate and allow the part to turn on faster with a slight degradation in turn on click/pop noise.

## BITS 5, 13, 14, and 15

Bits 13, 14, and 15 are all reserve bits and must be set to low/zero/ground.

Bit 5 must be set High.

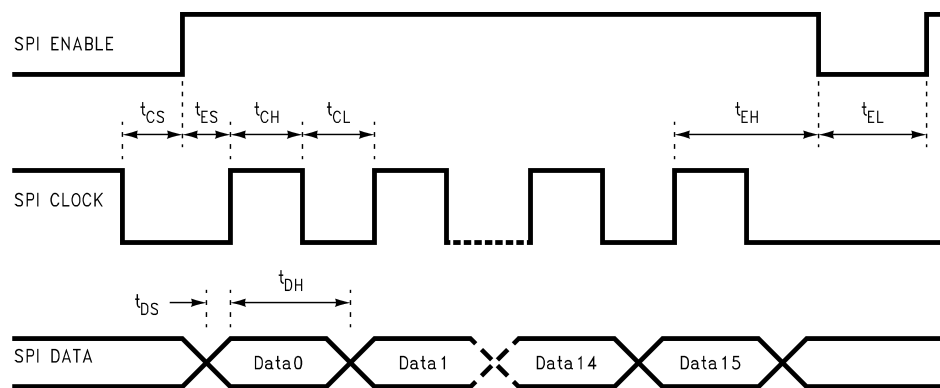
## SPI CONTROL INTERFACE BUS (J1)

SPI DATA: This is the serial data pin.

SPI CLK: This is the clock input pin.

SPI ENABLE: This is the SPI enable pin.

## SPI TIMING DIAGRAM



## SPI OPERATIONAL REQUIREMENTS

1. The maximum clock rate is 5MHz for the CLK pin.
2. CLK must remain logic-high for at least 100ns ( $t_{CH}$ ) after the rising edge of CLK, and CLK must remain logic-low for at least 100ns ( $t_{CL}$ ) after the falling edge of CLK.
3. Data bits are written to the DATA pin with the least significant bit (LSB) first.
4. The serial data bits are sampled at the rising edge of CLK. Any transition on DATA must occur at least 20ns ( $t_{DS}$ ) before the rising edge of CLK. Also, any transition on DATA must occur at least 20ns ( $t_{DH}$ ) after the rising edge of CLK and stabilize before the next rising edge of CLK.
5. ENABLE should be logic-high only during serial data transmission.
6. ENABLE must be logic-high at least 20ns ( $t_{ES}$ ) before the first rising edge of CLK, and ENABLE has to remain logic-high at least 20ns ( $t_{EH}$ ) after the sixteenth rising edge of CLK.
7. If ENABLE remains logic-low for more than 10ns before all 16 bits are transmitted then the data latch will be aborted.
8. If ENABLE is logic-high for more than 16 CLK pulses then only the first 16 data bits will be latched and activated at rising edge of sixteenth CLK.
9. ENABLE must remain logic-low for at least 30ns ( $t_{EL}$ ).
10. Coincidental rising or falling edges of CLK and ENABLE are not allowed. If CLK is to be held logic-high after the data transmission, the falling edge of CLK must occur at least 20ns ( $t_{CS}$ ) before ENABLE transitions to logic-high for the next set of data.

## I2S INTERFACE BUS (J2 - See [Figure 21](#) )

The I2S standard provides a uni-directional serial interface designed specifically for digital audio. For the LM4921, the interface provides access to a 48kHz, 16 bit full-range stereo audio DAC. This interface uses a three wire system of clock (I2S\_CLK), data (I2S\_DATA), and word select (I2S\_WS, sometimes called Right/Left Select).

A bit clock (I2S\_CLK) at 32 or 64 times the sample frequency is established by the I2S system master and the word select (I2S\_WS) line is driven at a frequency equal to the sampling rate of the audio data, in this case 48kHz. The word line is registered to change on the positive edge of the bit clock. The serial data (I2S\_DATA) is sent MSB first, again registers on the positive edge of the bit clock, delayed by 1 bit clock cycle relative to the changing of the word line (typical I<sup>2</sup>S format).

## MCLK/XTAL\_IN (S1 MCLK SEL - See [Figure 21](#))

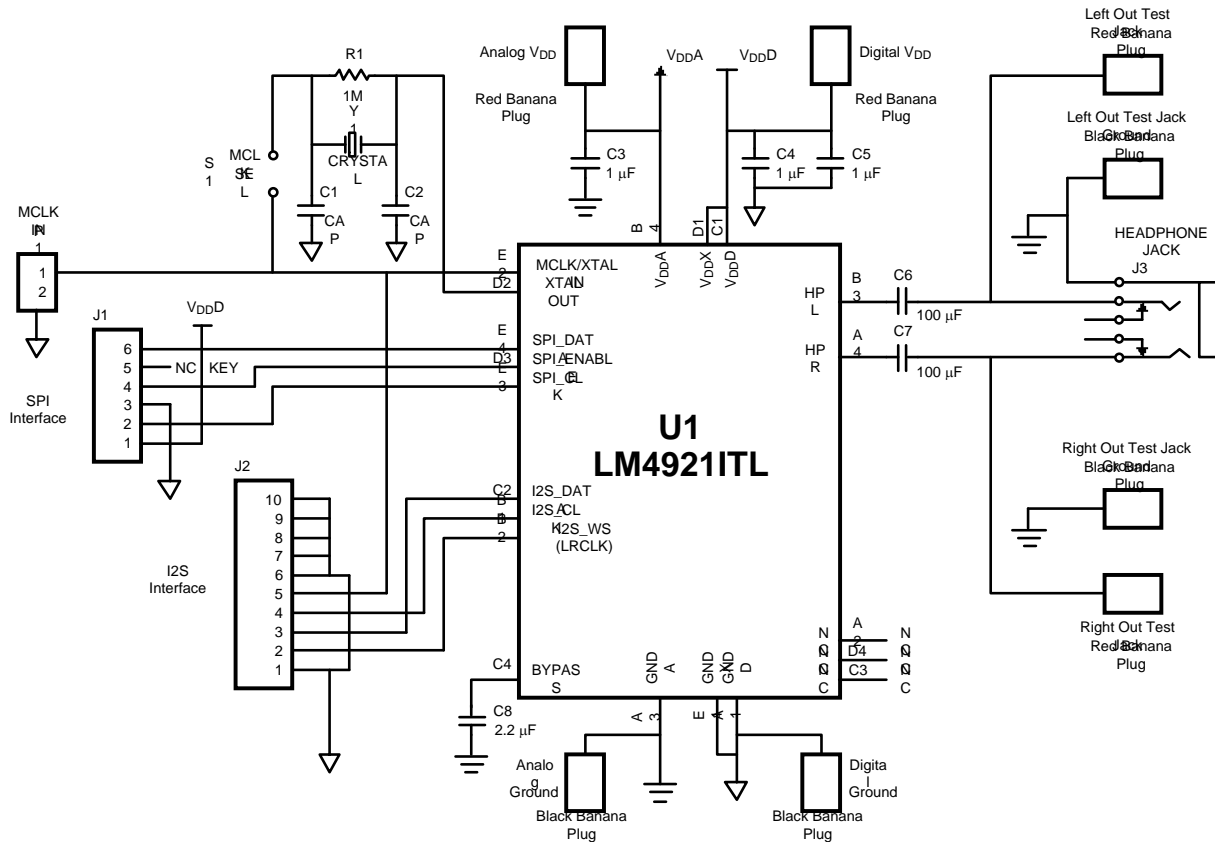
This is the input for an external Master Clock. The jumper at S1 must be removed (disconnecting the onboard crystal from the circuit) when using an external Master Clock.

## STEREO HEADPHONE OUTPUT JACK (J3 - See [Figure 21](#))

This is the stereo headphone output. Each channel is single-ended, with 100uF DC output blocking capacitors mounted on the demo board (C6 and C7). These capacitors are necessary to block the 1/2 VDD DC bias and prevent it from flowing through the headphone speakers (DC current will destroy most audio speakers) while allowing the audio ac signal to pass through. The jack features a typical stereo headphone pinout.

## LM4921ITL DEMO BOARD OPERATION

The LM4921ITL demo board is a complete evaluation platform (Parallel Port SPI Interface Card and control software available), designed to give easy access to the control pins of the part and comprise all the necessary external passive components. There are separate analog and digital supply connectors, SPI interface bus (J1) for the control lines, I<sup>2</sup>S interface bus (J2) for full-range digital audio, stereo headphone output (J3), and an external MCLK input (P1) for use in place of the crystal on the demoboard.



(1) Parallel Port SPI Interface Card and control software available.

**Figure 21. LM4921ITL Demo Board Schematic**



**DEMO BOARD BILL OF MATERIALS**

Texas Instruments Bill of Material				
Analog Audio LM4921ITL20 Eval Board				
Assembly Part Number: 980011973-100				
Revision A				
Item	Part Number	Part Description	Qty	Ref Designator
1	551011973-001	LM4921 Eval Board PCB etch 001	1	
2		LM4921 ITL20 DSBGA 20 Bumps	1	U1
3		Cer Cap 22pF 50V 10%, size 1206	2	C1, C2
4		Cer Cap 0.1pF 50V 10%, size 1206	1	C4
5		Tant Cap 1μF 16V 10%, 3216	3	C3, C5, C8
6		Tant Cap 220μF 16V 10%, 7243	2	C6, C7
7		1 meg ohm	1	R1
8		Crystal 11.2896MHz	1	Y1
9		Phone Jack 3.5mm Stereo	1	J3
10		Jumper Header 1X2	2	P1, S1
11		Jumper Header 1X3	2	J1
12		Jumper Header 1X5	2	J2
13		PCB Banana Jack, Black-Mouser 164-6218	4	A GND, D GND, GND (2)
14		PCB Banana Jack, Red-Mouser 164-6219	4	A VDD, D VDD, HP L, HP R

DEMO BOARD ARTWORKS

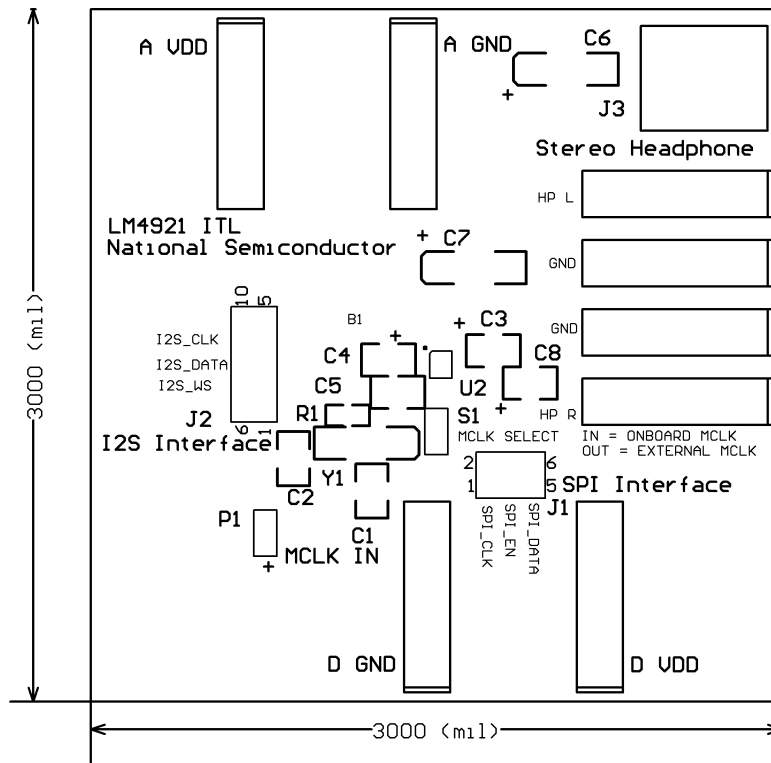


Figure 22. Silkscreen Layer

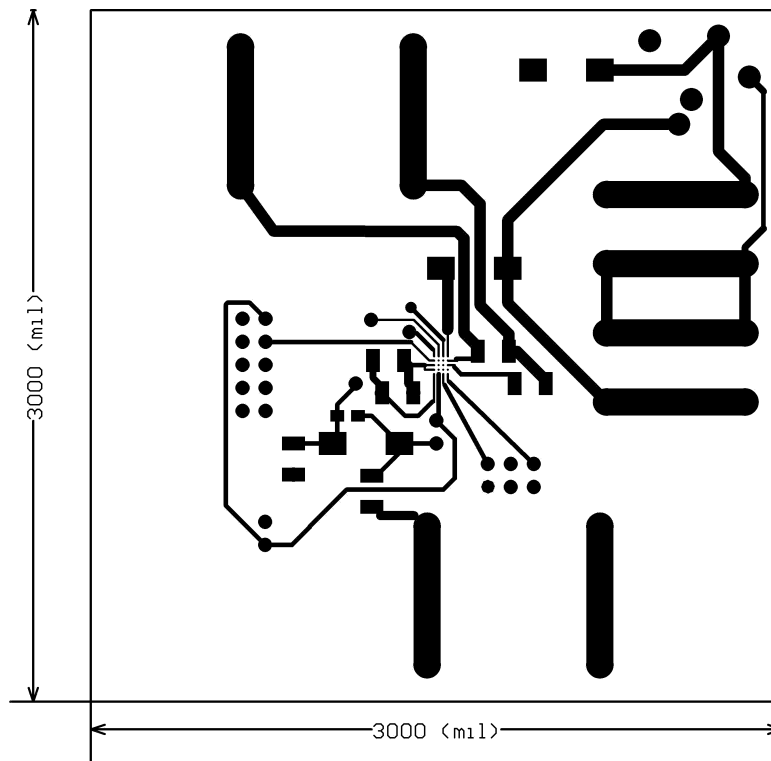


Figure 23. Top Layer

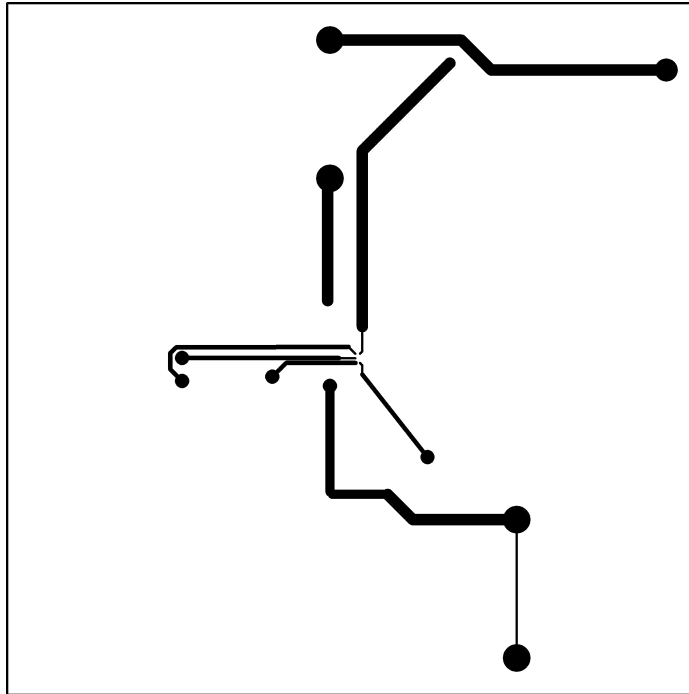


Figure 24. Mid Layer 1

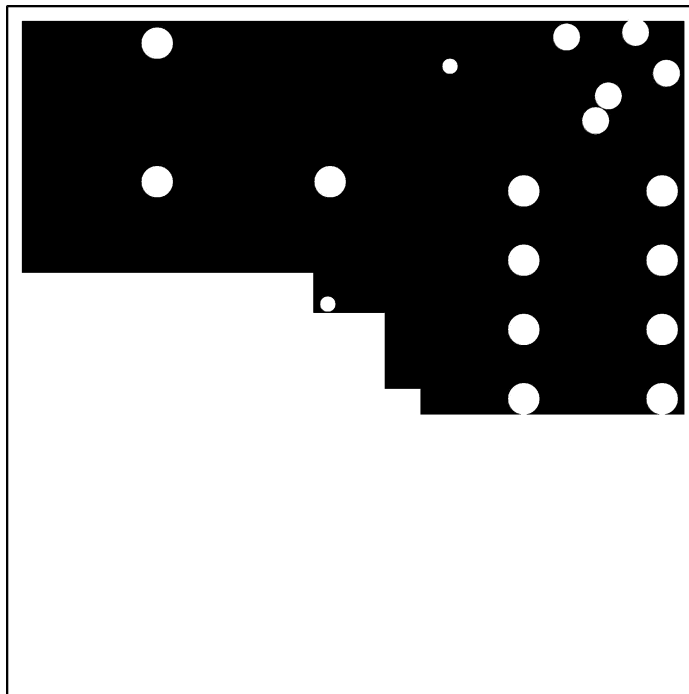


Figure 25. Mid Layer 2

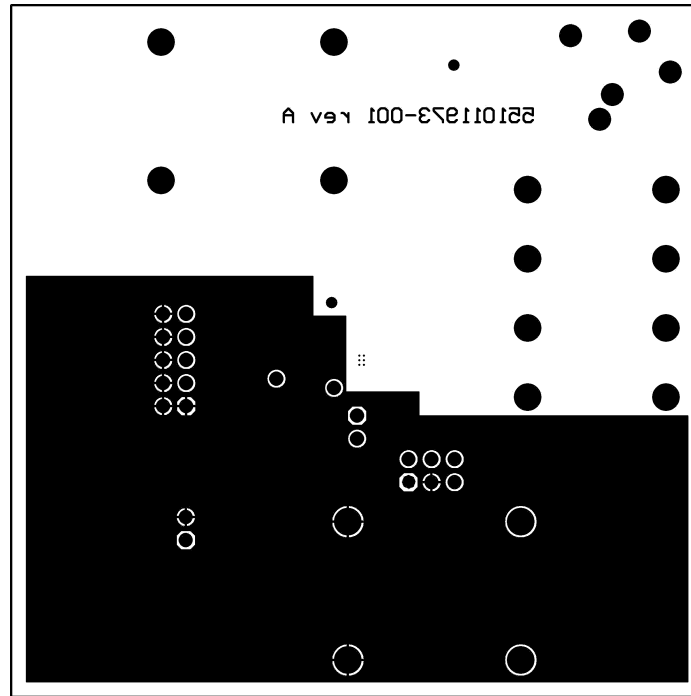


Figure 26. Bottom Layer

---

**REVISION HISTORY**

<b>Changes from Revision D (May 2013) to Revision E</b>	<b>Page</b>
<hr/> <ul style="list-style-type: none"><li>• Changed layout of National Data Sheet to TI format .....</li></ul>	<hr/> <a href="#">20</a>

**PACKAGING INFORMATION**

Orderable part number	Status (1)	Material type (2)	Package   Pins	Package qty   Carrier	RoHS (3)	Lead finish/ Ball material (4)	MSL rating/ Peak reflow (5)	Op temp (°C)	Part marking (6)
<a href="#">LM4921ITL/NOPB</a>	Active	Production	DSBGA (YZR)   20	250   SMALL T&R	Yes	SNAGCU	Level-1-260C-UNLIM	-40 to 85	G B9
LM4921ITL/NOPB.A	Active	Production	DSBGA (YZR)   20	250   SMALL T&R	Yes	SNAGCU	Level-1-260C-UNLIM	-40 to 85	G B9
<a href="#">LM4921ITLX/NOPB</a>	Active	Production	DSBGA (YZR)   20	3000   LARGE T&R	Yes	SNAGCU	Level-1-260C-UNLIM	-40 to 85	G B9
LM4921ITLX/NOPB.A	Active	Production	DSBGA (YZR)   20	3000   LARGE T&R	Yes	SNAGCU	Level-1-260C-UNLIM	-40 to 85	G B9

(1) **Status:** For more details on status, see our [product life cycle](#).

(2) **Material type:** When designated, preproduction parts are prototypes/experimental devices, and are not yet approved or released for full production. Testing and final process, including without limitation quality assurance, reliability performance testing, and/or process qualification, may not yet be complete, and this item is subject to further changes or possible discontinuation. If available for ordering, purchases will be subject to an additional waiver at checkout, and are intended for early internal evaluation purposes only. These items are sold without warranties of any kind.

(3) **RoHS values:** Yes, No, RoHS Exempt. See the [TI RoHS Statement](#) for additional information and value definition.

(4) **Lead finish/Ball material:** Parts may have multiple material finish options. Finish options are separated by a vertical ruled line. Lead finish/Ball material values may wrap to two lines if the finish value exceeds the maximum column width.

(5) **MSL rating/Peak reflow:** The moisture sensitivity level ratings and peak solder (reflow) temperatures. In the event that a part has multiple moisture sensitivity ratings, only the lowest level per JEDEC standards is shown. Refer to the shipping label for the actual reflow temperature that will be used to mount the part to the printed circuit board.

(6) **Part marking:** There may be an additional marking, which relates to the logo, the lot trace code information, or the environmental category of the part.

Multiple part markings will be inside parentheses. Only one part marking contained in parentheses and separated by a "-" will appear on a part. If a line is indented then it is a continuation of the previous line and the two combined represent the entire part marking for that device.

**Important Information and Disclaimer:** The information provided on this page represents TI's knowledge and belief as of the date that it is provided. TI bases its knowledge and belief on information provided by third parties, and makes no representation or warranty as to the accuracy of such information. Efforts are underway to better integrate information from third parties. TI has taken and continues to take reasonable steps to provide representative and accurate information but may not have conducted destructive testing or chemical analysis on incoming materials and chemicals. TI and TI suppliers consider certain information to be proprietary, and thus CAS numbers and other limited information may not be available for release.

In no event shall TI's liability arising out of such information exceed the total purchase price of the TI part(s) at issue in this document sold by TI to Customer on an annual basis.



**TAPE AND REEL INFORMATION**

**QUADRANT ASSIGNMENTS FOR PIN 1 ORIENTATION IN TAPE**


\*All dimensions are nominal

Device	Package Type	Package Drawing	Pins	SPQ	Reel Diameter (mm)	Reel Width W1 (mm)	A0 (mm)	B0 (mm)	K0 (mm)	P1 (mm)	W (mm)	Pin1 Quadrant
LM4921ITL/NOPB	DSBGA	YZR	20	250	178.0	8.4	2.34	2.85	0.76	4.0	8.0	Q1
LM4921ITLX/NOPB	DSBGA	YZR	20	3000	178.0	8.4	2.34	2.85	0.76	4.0	8.0	Q1

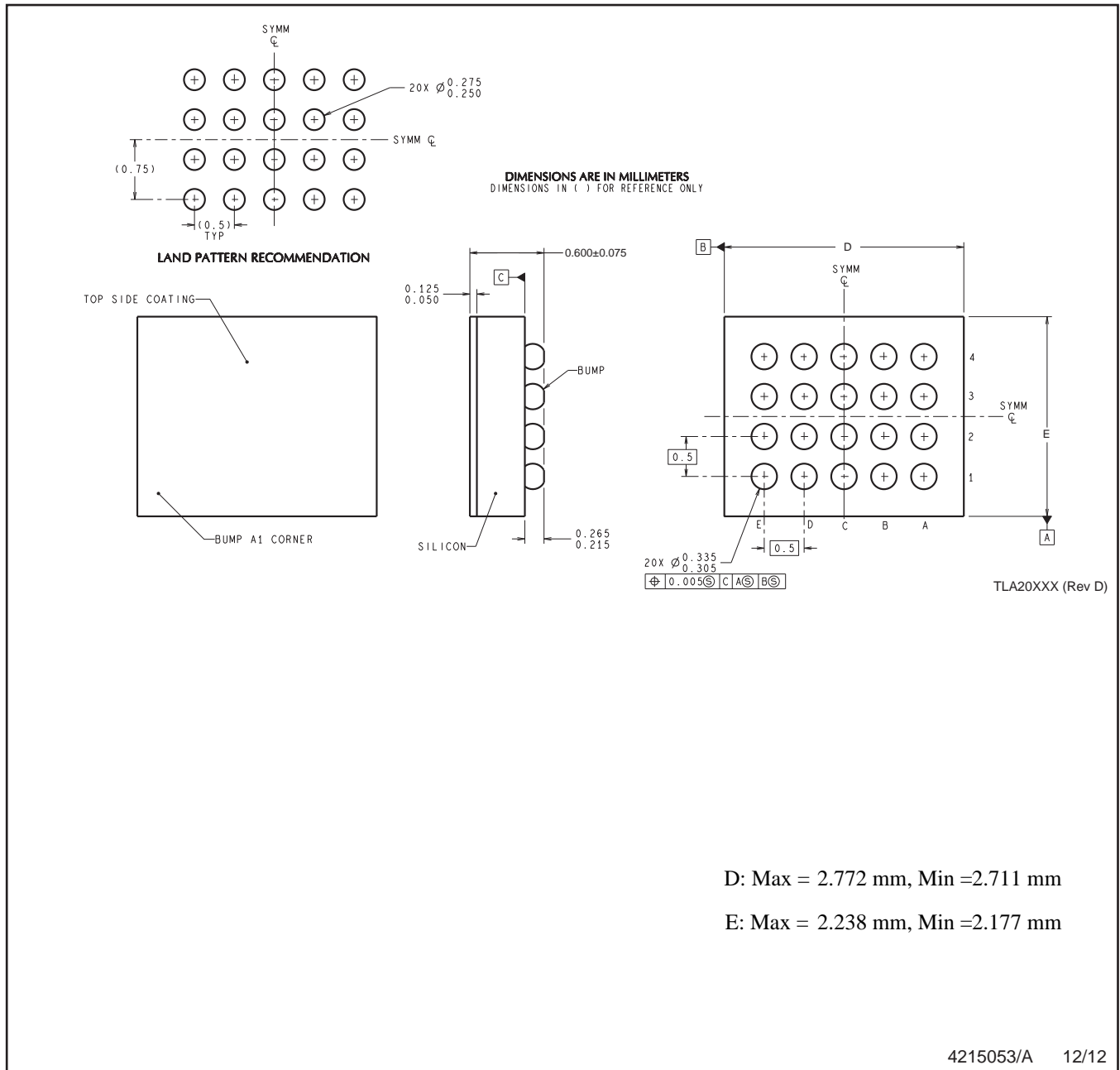


**TAPE AND REEL BOX DIMENSIONS**


\*All dimensions are nominal

Device	Package Type	Package Drawing	Pins	SPQ	Length (mm)	Width (mm)	Height (mm)
LM4921ITL/NOPB	DSBGA	YZR	20	250	208.0	191.0	35.0
LM4921ITLX/NOPB	DSBGA	YZR	20	3000	208.0	191.0	35.0

YZR0020



D: Max = 2.772 mm, Min = 2.711 mm

E: Max = 2.238 mm, Min = 2.177 mm

4215053/A 12/12

NOTES: A. All linear dimensions are in millimeters. Dimensioning and tolerancing per ASME Y14.5M-1994.  
B. This drawing is subject to change without notice.

## IMPORTANT NOTICE AND DISCLAIMER

TI PROVIDES TECHNICAL AND RELIABILITY DATA (INCLUDING DATASHEETS), DESIGN RESOURCES (INCLUDING REFERENCE DESIGNS), APPLICATION OR OTHER DESIGN ADVICE, WEB TOOLS, SAFETY INFORMATION, AND OTHER RESOURCES "AS IS" AND WITH ALL FAULTS, AND DISCLAIMS ALL WARRANTIES, EXPRESS AND IMPLIED, INCLUDING WITHOUT LIMITATION ANY IMPLIED WARRANTIES OF MERCHANTABILITY, FITNESS FOR A PARTICULAR PURPOSE OR NON-INFRINGEMENT OF THIRD PARTY INTELLECTUAL PROPERTY RIGHTS.

These resources are intended for skilled developers designing with TI products. You are solely responsible for (1) selecting the appropriate TI products for your application, (2) designing, validating and testing your application, and (3) ensuring your application meets applicable standards, and any other safety, security, regulatory or other requirements.

These resources are subject to change without notice. TI grants you permission to use these resources only for development of an application that uses the TI products described in the resource. Other reproduction and display of these resources is prohibited. No license is granted to any other TI intellectual property right or to any third party intellectual property right. TI disclaims responsibility for, and you fully indemnify TI and its representatives against any claims, damages, costs, losses, and liabilities arising out of your use of these resources.

TI's products are provided subject to [TI's Terms of Sale](#), [TI's General Quality Guidelines](#), or other applicable terms available either on [ti.com](#) or provided in conjunction with such TI products. TI's provision of these resources does not expand or otherwise alter TI's applicable warranties or warranty disclaimers for TI products. Unless TI explicitly designates a product as custom or customer-specified, TI products are standard, catalog, general purpose devices.

TI objects to and rejects any additional or different terms you may propose.

Copyright © 2025, Texas Instruments Incorporated

Last updated 10/2025