

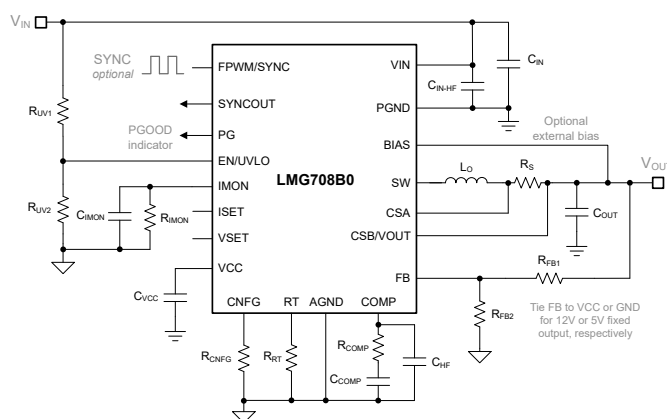
# LMG708B0 80V<sub>IN</sub>, 20A<sub>OUT</sub>, High Power Density GaN Synchronous Buck Converter

## 1 Features

- 20A synchronous buck DC/DC converter
  - Low  $R_{DS(on)}$  gallium-nitride (GaN) power FETs
  - Wide input voltage range of 5V to 80V
  - Adjustable output voltage from 1V to 55V, or fixed output options of 5V or 12V
  - Maximum junction temperature of 125°C
  - Frequency adjustable from 200kHz to 2.64MHz
  - 25ns  $t_{ON(min)}$  for high step-down conversion
  - CV or CC regulation with dynamic adjustment
- High efficiency across the full load range
  - 97% at 48V<sub>IN</sub>, 12V<sub>OUT</sub>, 20A, 400kHz
  - Optimized near-zero deadtime switching
  - Multiphase stackable for higher output current
  - Dual-input VCC subregulator with BIAS option
  - Thermally-enhanced eQFN-22 package with optional top-side cooling
- Designed for ultra-low emissions requirements
  - Spread spectrum (DRSS) frequency modulation
  - Optional external clock synchronization
  - Selectable FPWM or PFM mode at light loads
  - Integrated bootstrap capacitor
- Integrated protection features for robust design
  - Hiccup-mode overcurrent protection
  - Average output current monitoring (IMON)
  - Precision enable and PGOOD functions
  - VIN, VCC, and gate-drive UVLO protection
- Create a custom design using the LMG708B0 with the [WEBENCH® Power Designer](#)

## 2 Applications

- **Communications systems:** wireless infrastructure
- **Industrial:** test and measurement, power delivery
- **Enterprise systems:** high-performance computing



**Typical Schematic**

## 3 Description

The LMG708B0 is a GaN synchronous buck DC/DC converter offered from a family of devices that provide ultra-high current density and excellent power conversion efficiency. The integrated low  $R_{DS(on)}$  GaN FETs with near-zero deadtime switching performance enable up to 20A of output current across a wide input voltage range of 5V to 80V.

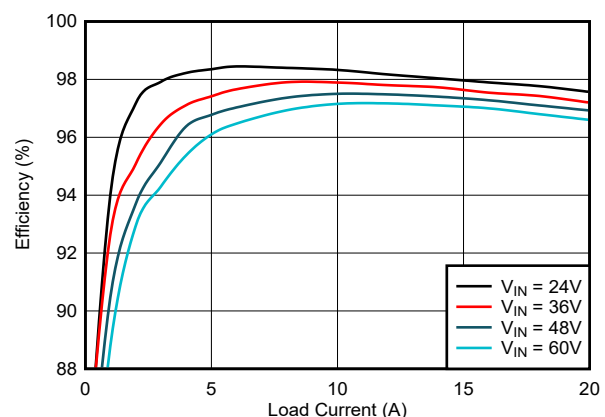
Phase stackable with synchronized interleaving, the peak current-mode architecture of the LMG708B0 supports accurate current sharing with paralleled phases for even higher output current. Along with constant-voltage (CV) operation, a dual-loop architecture with shared compensation provides constant-current (CC) regulation for battery charging and other current-source type loads. This cohesive approach enables a seamless transition between CV and CC modes, and high accuracy for voltage ( $\pm 1\%$ ) and current ( $\pm 4.5\%$ ) regulation, effectively reducing the bill-of-materials (BOM) cost for applications that require average output current control. VSET and ISET inputs facilitate dynamic adjustment of the respective CV and CC loop setpoints, and an IMON output provides average output current monitoring.

The LMG708B0 has a thermally enhanced package (TEP) with optional top-side cooling (TSC) through exposed package connections and low package parasitic inductance for quiet switching performance.

### Package Information

PART NUMBER	PACKAGE <sup>(1)</sup>	PACKAGE SIZE <sup>(2)</sup>
LMG708B0	VBT (VQFN, 22)	4.5mm × 6mm

- (1) For more information, see [Section 5](#).
- (2) The package size (length × width) is a nominal value and includes pins, where applicable.



**Efficiency, V<sub>OUT</sub> = 12V, F<sub>SW</sub> = 400kHz**



A high-side switch minimum on-time of 25ns facilitates large step-down ratios, enabling the direct conversion from 24V or 48V inputs to low-voltage rails for reduced system design cost and complexity. The LMG708B0 continues to operate during input voltage dips as low as 5V, at close to 100% duty cycle if needed. The 20μA sleep quiescent current with the output voltage in regulation extends operating run-time in battery-powered systems.

The LMG708B0 includes several features to simplify compliance with CISPR 11 and CISPR 32 conducted emissions requirements. Predictably timed GaN FET gate drivers along with integrated bootstrap switch and capacitor minimize deadtime during switching transitions, reducing switching losses and improving EMI performance at high input voltage and high switching frequency. To reduce input capacitor ripple current and EMI filter size, interleaved operation using a SYNCOUT signal with programmable phase shift works well for cascaded, multichannel or multiphase designs. Resistor-adjustable switching frequency as high as 2.2MHz can be synchronized to an external clock source up to 2.64MHz to eliminate beat frequencies in noise-sensitive applications. Finally, the LMG708B0 has dual-random spread spectrum (DRSS), a unique EMI-reduction feature that combines low-frequency triangular and high-frequency random modulations to mitigate EMI disturbances across lower and higher frequency bands, respectively.

Additional features of the LMG708B0 include 125°C maximum junction temperature operation, user-selectable PFM mode for lower current consumption during light-load conditions, integrated bootstrap capacitor with synchronous charging for robust level shifting, open-drain power-good (PG) indicator for fault reporting and output monitoring, precision enable input for input UVLO, monotonic start-up into prebiased loads, dual-input VCC bias subregulator, 30mV full-scale current sensing, hiccup-mode overload protection, and thermal shutdown protection with automatic recovery for the controller.

The LMG708B0 comes in a 4.5mm × 6mm, thermally enhanced, 22-pin eQFN package using a flip-chip routable leadframe (FCRLF) packaging technique. Leveraging high-performance GaN power FETs (based on TI's proprietary [GaN](#) IC technology), thermal management and EMI mitigation features, CC/CV operation, and small design size, the LMG708B0 represents an excellent point-of-load regulator choice for applications requiring the most efficient GaN design with useable current, lifetime reliability, and cost advantages.

## 4 Device and Documentation Support

### 4.1 Device Support

#### 4.1.1 Development Support

For development support, see the following:

- LMG708B0 [Quickstart Calculator](#)
- LMG708B0 [Simulation Models](#)
- LMG708B0 Altium [layout](#) source files
- For TI's reference design library, visit [TI Designs](#)
- For TI's WEBENCH Design Environment, visit the [WEBENCH® Design Center](#)
- EVM user's guides:
  - [LMG708B0 80V<sub>IN</sub>, 20A<sub>OUT</sub> GaN Buck Converter Evaluation Module](#)
- TI Designs:
  - [Automotive EMI and Thermally Optimized Synchronous Buck Converter Reference Design](#)
  - [Wide Input Synchronous Buck Converter Reference Design With Frequency Spread Spectrum](#)
- Technical articles:
  - [Increasing Power Density with an Integrated GaN Solution](#)
  - [High-Density PCB Layout of DC/DC Converters](#)
- To view a related device of this product, see the [LM5190](#) CC/CV synchronous buck controller

##### 4.1.1.1 Custom Design With WEBENCH® Tools

[Click here](#) to create a custom design using the LMG708B0 device with the WEBENCH® Power Designer.

1. Start by entering the input voltage ( $V_{IN}$ ), output voltage ( $V_{OUT}$ ), and output current ( $I_{OUT}$ ) requirements.
2. Optimize the design for key parameters such as efficiency, footprint, and cost using the optimizer dial.
3. Compare the generated design with other possible designs from Texas Instruments.

The WEBENCH Power Designer gives a customized schematic along with a list of materials with real-time pricing and component availability.

In most cases, these actions are available:

- Run electrical simulations to see important waveforms and circuit performance
- Run thermal simulations to understand board thermal performance
- Export customized schematic and layout into popular CAD formats
- Print PDF reports for the design, and share the design with colleagues

Get more information about WEBENCH tools at [www.ti.com/WEBENCH](http://www.ti.com/WEBENCH).

### 4.2 Documentation Support

#### 4.2.1 Related Documentation

For related documentation, see the following:

- Texas Instruments, [LM5190-Q1 CC-CV Buck Controller Evaluation Module](#) EVM user's guide
- Application briefs:
  - Texas Instruments, [Key Parameters and Driving Requirements of GaN FETs](#)
  - Texas Instruments, [Nomenclature, Types, and Structure of GaN Transistors](#)
  - Texas Instruments, [GaN Applications](#)
  - Texas Instruments, [GaN Driver Schematic and Layout Recommendations](#)

##### 4.2.1.1 Low-EMI Design Resources

- Texas Instruments, [Low EMI](#) landing page
- Texas Instruments, [Tackling the EMI challenge](#) company blog
- Texas Instruments, [An Engineer's Guide to Low EMI in DC/DC Regulators](#) e-book
- Texas Instruments, [Designing a low-EMI power supply](#) video series
- White papers:

- Texas Instruments, [An Overview of Conducted EMI Specifications for Power Supplies](#)
- Texas Instruments, [An Overview of Radiated EMI Specifications for Power Supplies](#)
- Texas Instruments, [Time-Saving and Cost-Effective Innovations for EMI Reduction in Power Supplies](#)
- Texas Instruments, [Valuing Wide  \$V\_{IN}\$ , Low EMI Synchronous Buck Circuits for Cost-driven, Demanding Applications](#)
- Texas Instruments, [Improve High-Current DC/DC Regulator EMI for Free With Optimized Power Stage Layout](#) application brief
- Texas Instruments, [Reduce Buck Converter EMI and Voltage Stress by Minimizing Inductive Parasitics](#) analog design journal

#### 4.2.1.2 Thermal Design Resources

- Texas Instruments, [Improving Thermal Performance in High Ambient Temperature Environments With Thermally Enhanced Packaging](#) white paper
- Applications notes:
  - Texas Instruments, [Thermal Design by Insight, Not Hindsight](#)
  - Texas Instruments, [A Guide to Board Layout for Best Thermal Resistance for Exposed Pad Packages](#)
  - Texas Instruments, [Semiconductor and IC Package Thermal Metrics](#)
  - Texas Instruments, [PowerPAD™ Thermally Enhanced Package](#)
  - Texas Instruments, [Using New Thermal Metrics](#)
- Texas Instruments, [PowerPAD™ Made Easy](#) application brief

#### 4.2.1.3 PCB Layout Resources

- LMG708B0-EVM12V [Altium layout](#) source files
- Texas Instruments, [Improve High-Current DC/DC Regulator EMI Performance for Free With Optimized Power Stage Layout](#) application brief
- Texas Instruments, [AN-1149 Layout Guidelines for Switching Power Supplies](#) application note
- Texas Instruments, [Constructing Your Power Supply – Layout Considerations](#) seminar

### 4.3 Receiving Notification of Documentation Updates

To receive notification of documentation updates, navigate to the device product folder on [ti.com](https://www.ti.com). Click on [Notifications](#) to register and receive a weekly digest of any product information that has changed. For change details, review the revision history included in any revised document.

### 4.4 Support Resources

[TI E2E™ support forums](#) are an engineer's go-to source for fast, verified answers and design help — straight from the experts. Search existing answers or ask your own question to get the quick design help you need.

Linked content is provided "AS IS" by the respective contributors. They do not constitute TI specifications and do not necessarily reflect TI's views; see TI's [Terms of Use](#).

### 4.5 Trademarks

PowerPAD™ and TI E2E™ are trademarks of Texas Instruments.

WEBENCH® is a registered trademark of Texas Instruments.

is a registered trademark of Texas Instruments.

All trademarks are the property of their respective owners.

### 4.6 Electrostatic Discharge Caution



This integrated circuit can be damaged by ESD. Texas Instruments recommends that all integrated circuits be handled with appropriate precautions. Failure to observe proper handling and installation procedures can cause damage.

ESD damage can range from subtle performance degradation to complete device failure. Precision integrated circuits may be more susceptible to damage because very small parametric changes could cause the device not to meet its published specifications.

### 4.7 Glossary

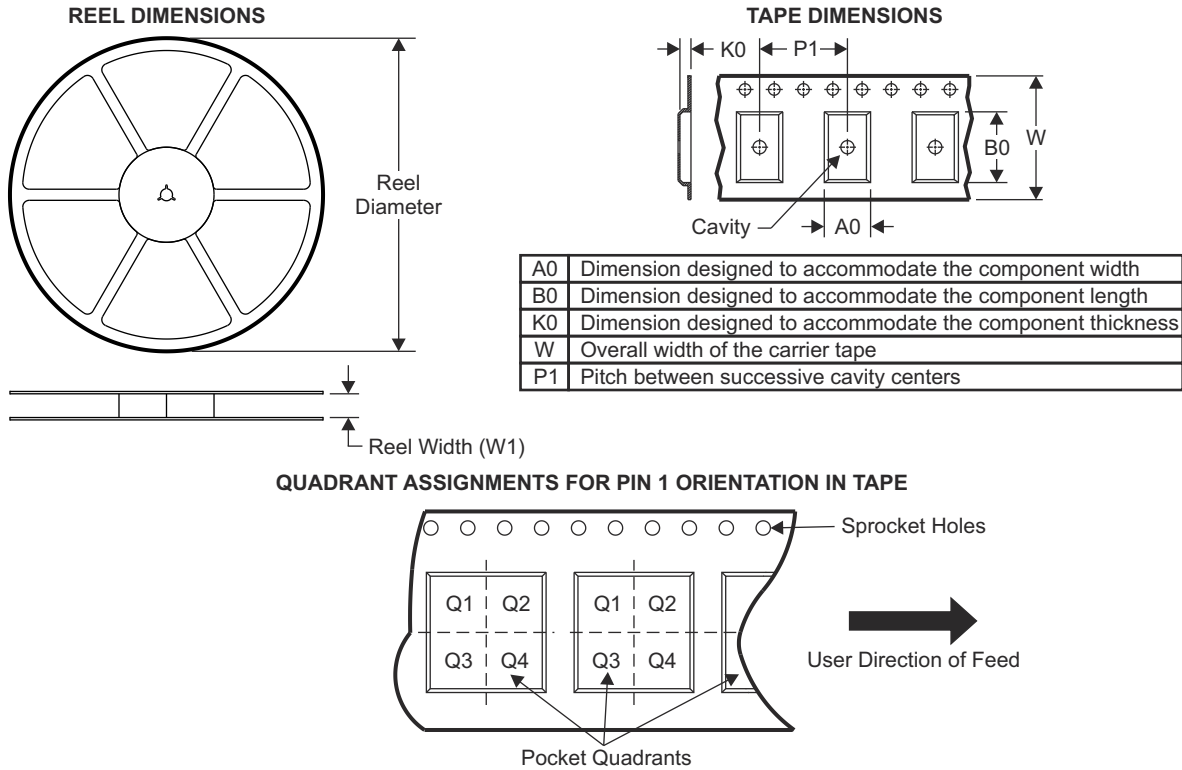
#### TI Glossary

This glossary lists and explains terms, acronyms, and definitions.

## 5 Mechanical, Packaging, and Orderable Information

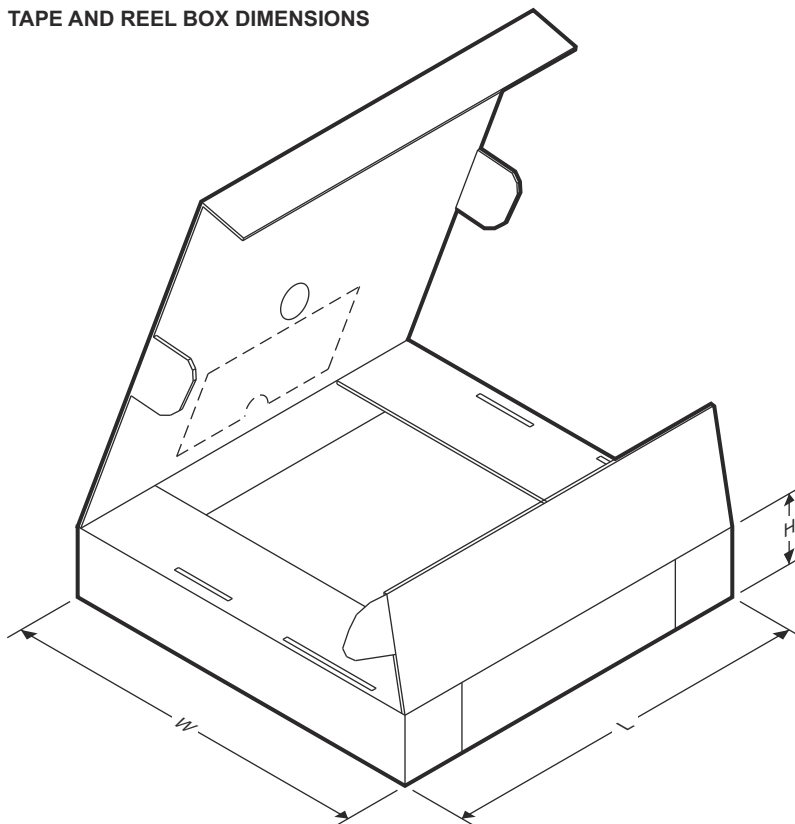
The following pages show mechanical, packaging, and orderable information. This information is the most current data available for the designated devices. This data is subject to change without notice and revision of this document. For browser-based versions of this data sheet, refer to the left-hand navigation.

### 5.1 Tape and Reel Information

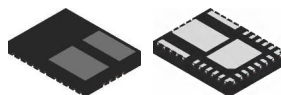


Device	Package Type	Package Drawing	Pins	SPQ	Reel Diameter (mm)	Reel Width W1 (mm)	A0 (mm)	B0 (mm)	K0 (mm)	P1 (mm)	W (mm)	Pin1 Quadrant
PLMG708B0VBTR	VQFN-FCRLF	VBTR	22	3000	330.0	16.4	4.8	6.3	1.1	8.0	16.0	Q1

# TAPE AND REEL BOX DIMENSIONS



Device	Package Type	Package Drawing	Pins	SPQ	Length (mm)	Width (mm)	Height (mm)
PLMG708B0VBTR	VQFN-FCRLF	VBTR	22	3000	367.0	367.0	38.0

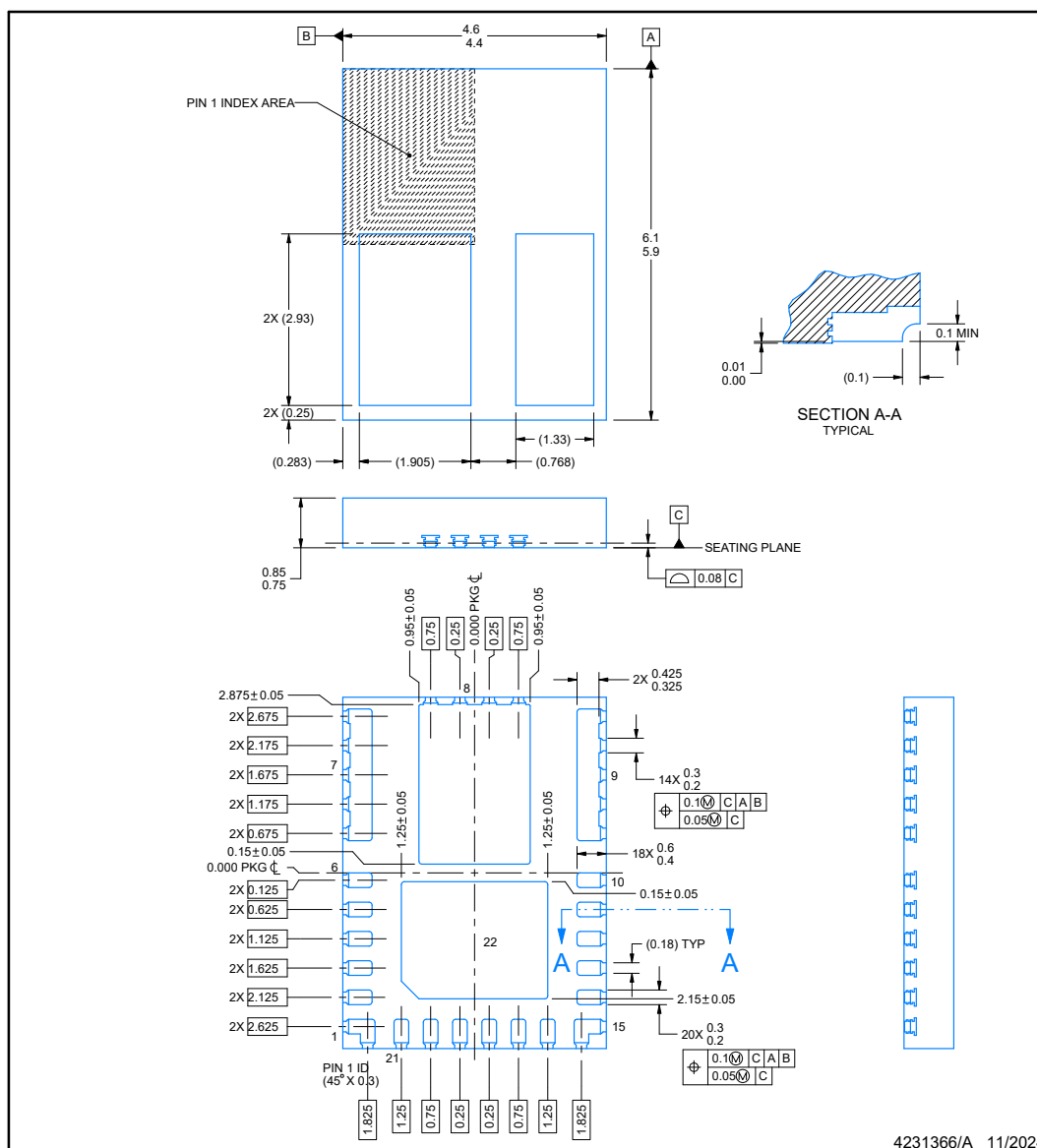


## PACKAGE OUTLINE

**VB T0022B**

**VQFN-FCRLF - 0.85 mm max height**

PLASTIC QUAD FLATPACK - NO LEAD



## ADVANCE INFORMATION

NOTES:

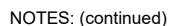
1. All linear dimensions are in millimeters. Any dimensions in parenthesis are for reference only. Dimensioning and tolerancing per ASME Y14.5M.
2. This drawing is subject to change without notice.
3. The package thermal pad must be soldered to the printed circuit board for thermal and mechanical performance.





**VQFN-FCRLF - 0.85 mm max height**

## ADVANCE INFORMATION



6. Laser cutting apertures with trapezoidal walls and rounded corners may offer better paste release. IPC-7525 may have alternate design recommendations.

## PACKAGING INFORMATION

Orderable part number	Status (1)	Material type (2)	Package   Pins	Package qty   Carrier	RoHS (3)	Lead finish/ Ball material (4)	MSL rating/ Peak reflow (5)	Op temp (°C)	Part marking (6)
PLMG708B0VBTR	Active	Preproduction	VQFN-FCRLF (VBT)   22	3000   LARGE T&R	-	Call TI	Call TI	-40 to 150	

<sup>(1)</sup> **Status:** For more details on status, see our [product life cycle](#).

<sup>(2)</sup> **Material type:** When designated, preproduction parts are prototypes/experimental devices, and are not yet approved or released for full production. Testing and final process, including without limitation quality assurance, reliability performance testing, and/or process qualification, may not yet be complete, and this item is subject to further changes or possible discontinuation. If available for ordering, purchases will be subject to an additional waiver at checkout, and are intended for early internal evaluation purposes only. These items are sold without warranties of any kind.

<sup>(3)</sup> **RoHS values:** Yes, No, RoHS Exempt. See the [TI RoHS Statement](#) for additional information and value definition.

<sup>(4)</sup> **Lead finish/Ball material:** Parts may have multiple material finish options. Finish options are separated by a vertical ruled line. Lead finish/Ball material values may wrap to two lines if the finish value exceeds the maximum column width.

<sup>(5)</sup> **MSL rating/Peak reflow:** The moisture sensitivity level ratings and peak solder (reflow) temperatures. In the event that a part has multiple moisture sensitivity ratings, only the lowest level per JEDEC standards is shown. Refer to the shipping label for the actual reflow temperature that will be used to mount the part to the printed circuit board.

<sup>(6)</sup> **Part marking:** There may be an additional marking, which relates to the logo, the lot trace code information, or the environmental category of the part.

Multiple part markings will be inside parentheses. Only one part marking contained in parentheses and separated by a "~" will appear on a part. If a line is indented then it is a continuation of the previous line and the two combined represent the entire part marking for that device.

**Important Information and Disclaimer:** The information provided on this page represents TI's knowledge and belief as of the date that it is provided. TI bases its knowledge and belief on information provided by third parties, and makes no representation or warranty as to the accuracy of such information. Efforts are underway to better integrate information from third parties. TI has taken and continues to take reasonable steps to provide representative and accurate information but may not have conducted destructive testing or chemical analysis on incoming materials and chemicals. TI and TI suppliers consider certain information to be proprietary, and thus CAS numbers and other limited information may not be available for release.

In no event shall TI's liability arising out of such information exceed the total purchase price of the TI part(s) at issue in this document sold by TI to Customer on an annual basis.

## PACKAGING INFORMATION

Orderable part number	Status (1)	Material type (2)	Package   Pins	Package qty   Carrier	RoHS (3)	Lead finish/ Ball material (4)	MSL rating/ Peak reflow (5)	Op temp (°C)	Part marking (6)
PLMG708B0VBTR	Active	Preproduction	VQFN-FCRLF (VBT)   22	3000   LARGE T&R	-	Call TI	Call TI	-40 to 125	

<sup>(1)</sup> **Status:** For more details on status, see our [product life cycle](#).

<sup>(2)</sup> **Material type:** When designated, preproduction parts are prototypes/experimental devices, and are not yet approved or released for full production. Testing and final process, including without limitation quality assurance, reliability performance testing, and/or process qualification, may not yet be complete, and this item is subject to further changes or possible discontinuation. If available for ordering, purchases will be subject to an additional waiver at checkout, and are intended for early internal evaluation purposes only. These items are sold without warranties of any kind.

<sup>(3)</sup> **RoHS values:** Yes, No, RoHS Exempt. See the [TI RoHS Statement](#) for additional information and value definition.

<sup>(4)</sup> **Lead finish/Ball material:** Parts may have multiple material finish options. Finish options are separated by a vertical ruled line. Lead finish/Ball material values may wrap to two lines if the finish value exceeds the maximum column width.

<sup>(5)</sup> **MSL rating/Peak reflow:** The moisture sensitivity level ratings and peak solder (reflow) temperatures. In the event that a part has multiple moisture sensitivity ratings, only the lowest level per JEDEC standards is shown. Refer to the shipping label for the actual reflow temperature that will be used to mount the part to the printed circuit board.

<sup>(6)</sup> **Part marking:** There may be an additional marking, which relates to the logo, the lot trace code information, or the environmental category of the part.

Multiple part markings will be inside parentheses. Only one part marking contained in parentheses and separated by a "~" will appear on a part. If a line is indented then it is a continuation of the previous line and the two combined represent the entire part marking for that device.

**Important Information and Disclaimer:** The information provided on this page represents TI's knowledge and belief as of the date that it is provided. TI bases its knowledge and belief on information provided by third parties, and makes no representation or warranty as to the accuracy of such information. Efforts are underway to better integrate information from third parties. TI has taken and continues to take reasonable steps to provide representative and accurate information but may not have conducted destructive testing or chemical analysis on incoming materials and chemicals. TI and TI suppliers consider certain information to be proprietary, and thus CAS numbers and other limited information may not be available for release.

In no event shall TI's liability arising out of such information exceed the total purchase price of the TI part(s) at issue in this document sold by TI to Customer on an annual basis.

## GENERIC PACKAGE VIEW

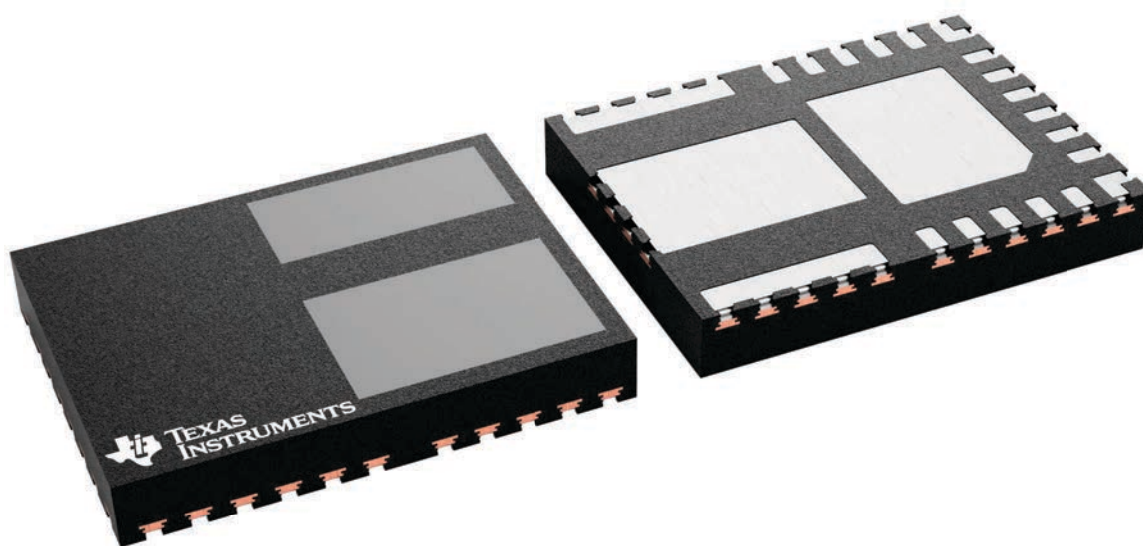
**VBT 22**

**VQFN-FCRLF - 0.85 mm max height**

4.5 x 6, 0.5 mm pitch

PLASTIC QUAD FLATPACK - NO LEAD

This image is a representation of the package family, actual package may vary.  
Refer to the product data sheet for package details.



4231389/A

## IMPORTANT NOTICE AND DISCLAIMER

TI PROVIDES TECHNICAL AND RELIABILITY DATA (INCLUDING DATASHEETS), DESIGN RESOURCES (INCLUDING REFERENCE DESIGNS), APPLICATION OR OTHER DESIGN ADVICE, WEB TOOLS, SAFETY INFORMATION, AND OTHER RESOURCES "AS IS" AND WITH ALL FAULTS, AND DISCLAIMS ALL WARRANTIES, EXPRESS AND IMPLIED, INCLUDING WITHOUT LIMITATION ANY IMPLIED WARRANTIES OF MERCHANTABILITY, FITNESS FOR A PARTICULAR PURPOSE OR NON-INFRINGEMENT OF THIRD PARTY INTELLECTUAL PROPERTY RIGHTS.

These resources are intended for skilled developers designing with TI products. You are solely responsible for (1) selecting the appropriate TI products for your application, (2) designing, validating and testing your application, and (3) ensuring your application meets applicable standards, and any other safety, security, regulatory or other requirements.

These resources are subject to change without notice. TI grants you permission to use these resources only for development of an application that uses the TI products described in the resource. Other reproduction and display of these resources is prohibited. No license is granted to any other TI intellectual property right or to any third party intellectual property right. TI disclaims responsibility for, and you fully indemnify TI and its representatives against any claims, damages, costs, losses, and liabilities arising out of your use of these resources.

TI's products are provided subject to [TI's Terms of Sale](#), [TI's General Quality Guidelines](#), or other applicable terms available either on [ti.com](#) or provided in conjunction with such TI products. TI's provision of these resources does not expand or otherwise alter TI's applicable warranties or warranty disclaimers for TI products. Unless TI explicitly designates a product as custom or customer-specified, TI products are standard, catalog, general purpose devices.

TI objects to and rejects any additional or different terms you may propose.

Copyright © 2025, Texas Instruments Incorporated

Last updated 10/2025