

SN74LVCC3245A Octal Bus Transceiver With Adjustable Output Voltage and 3-State Outputs

1 Features

- 8-bit direction controlled translating bus transceiver
- 2.3V to 3.6V on A port and 3V to 5.5V on B port
- Robust, glitch-free power supply sequencing
- V_{CC} isolation and VCC Disconnect feature
 - If either V_{CC} input is below 100mV or left floating, all I/O outputs are disabled and become high impedance
- Control inputs V_{IH} and V_{IL} levels are referenced to V_{CCA} voltage
- High drive strength for heavier loads: 24mA drive at 3V supply
- Latch-up performance exceeds 250mA per JESD 17
- Operating temperature range from -40°C to 85°C
- ESD protection exceeds JESD 22
 - 2000V Human Body Model (A114-A)
 - 1000V Charged-Device Model (C101)

2 Applications

- Ultrasound Scanner
- [String Inverter](#)
- [Central Inverter](#)
- [Single Board Computer](#)

3 Description

The SN74LVCC3245A device is an 8-bit (octal) noninverting bus transceiver contains two separate supply rails. The B port is designed to track V_{CCB} , which accepts voltages from 3V to 5.5V, and the A port is designed to track V_{CCA} , which operates at 2.3V to 3.6V. This allows for translation from a 3.3V to a 5V system environment and vice versa, from a 2.5V to a 3.3V system environment and vice versa.

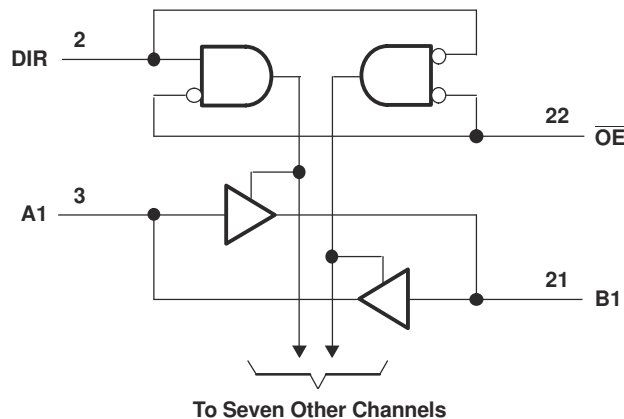
This device is fully specified for partial-power-down applications using Ioff. The Ioff circuitry disables the outputs, preventing damaging current backflow through the device when it is powered down. The V_{CC} isolation feature is designed so that if either V_{CCA} or V_{CCB} is less than 100mV, both I/O ports enter a high-impedance state by disabling the outputs.

Package Information

PART NUMBER	PACKAGE ⁽¹⁾	PACKAGE SIZE ⁽²⁾
SN74LVCC3245A	DB (SSOP, 24)	8.2mm × 7.8mm
	DW (SOIC, 24)	15.5mm × 10.3mm
	DBQ (SSOP, 24)	8.65mm × 6mm
	NS (SO, 24)	15mm × 7.8mm
	PW (TSSOP, 24)	7.8mm × 6.4mm

(1) For more information, see [Section 11](#).

(2) The package size (length × width) is a nominal value and includes pins, where applicable.



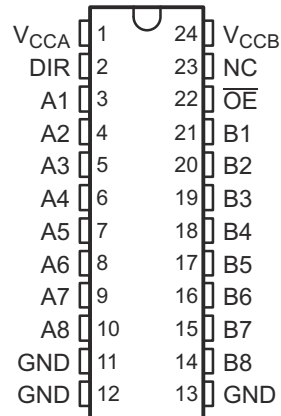
Functional Block Diagram



Table of Contents

1 Features	1	7.1 Overview.....	13
2 Applications	1	7.2 Functional Block Diagram.....	13
3 Description	1	7.3 Feature Description.....	13
4 Pin Configuration and Functions	3	7.4 Glitch-free Power Supply Sequencing.....	13
5 Specifications	4	7.5 V_{CC} Isolation and V_{CC} Disconnect	13
5.1 Absolute Maximum Ratings.....	4	7.6 Device Functional Modes.....	13
5.2 ESD Ratings.....	4	8 Application and Implementation	14
5.3 Recommended Operating Conditions	4	8.1 Application Information.....	14
5.4 Thermal Information.....	6	8.2 Typical Application.....	14
5.5 Electrical Characteristics.....	6	8.3 Power Supply Recommendations.....	15
5.6 Switching Characteristics.....	7	8.4 Layout.....	15
5.7 Operating Characteristics.....	8	9 Device and Documentation Support	17
5.8 Typical Characteristics.....	8	9.1 Documentation Support.....	17
6 Parameter Measurement Information	9	9.2 Receiving Notification of Documentation Updates....	17
6.1 A Port ($V_{CCA} = 2.5V \pm 0.2V$ and $V_{CCB} = 3.3V \pm$ $0.3V$).....	9	9.3 Support Resources.....	17
6.2 B Port ($V_{CCA} = 2.5V \pm 0.2V$ and $V_{CCB} = 3.3V \pm$ $0.3V$).....	10	9.4 Trademarks.....	17
6.3 B Port ($V_{CCA} = 3.6V$ and $V_{CCB} = 5.5V$).....	11	9.5 Electrostatic Discharge Caution.....	17
6.4 A and B Port (V_{CCA} and $V_{CCB} = 3.6V$).....	12	9.6 Glossary.....	17
7 Detailed Description	13	10 Revision History	17
		11 Mechanical, Packaging, and Orderable Information	18

4 Pin Configuration and Functions



NC – No internal connection

See [Section 11](#) for dimensions.

Figure 4-1. DB, DBQ, DW, NS, or PW Package, 24-Pin SSOP, SOIC, SO, or TSSOP (Top View)

Table 4-1. Pin Functions

PIN		TYPE ⁽¹⁾	DESCRIPTION
NAME	NO.		
A1	3	I/O	A1 port
A2	4	I/O	A2 port
A3	5	I/O	A3 port
A4	6	I/O	A4 port
A5	7	I/O	A5 port
A6	8	I/O	A6 port
A7	9	I/O	A7 port
A8	10	I/O	A8 port
B1	21	I/O	B1 port
B2	20	I/O	B2 port
B3	19	I/O	B3 port
B4	18	I/O	B4 port
B5	17	I/O	B5 port
B6	16	I/O	B6 port
B7	15	I/O	B7 port
B8	14	I/O	B8 port
DIR	2	I	Dir input
GND	11	—	Ground
	12		
	13		
NC	23	—	Unconnected
\overline{OE}	22	I	Output Enable active low
V _{CCA}	1	—	A port power
V _{CCB}	24	—	B port power

(1) I = input, O = output, P = power

5 Specifications

5.1 Absolute Maximum Ratings

over operating free-air temperature range (unless otherwise noted)⁽¹⁾

		MIN	MAX	UNIT	
V_{CCA} V_{CCB}	Supply voltage	-0.5	6	V	
V_I	Input voltage	All A ports ⁽²⁾	-0.5	$V_{CCA} + 0.5$	V
		All B ports ⁽³⁾	-0.5	$V_{CCB} + 0.5$	
		Except I/O ports ⁽²⁾	-0.5	$V_{CCA} + 0.5$	
V_O	Output voltage ⁽³⁾	All A ports	-0.5	$V_{CCA} + 0.5$	V
		All B ports	-0.5	$V_{CCB} + 0.5$	
I_{IK}	Input clamp current	$V_I < 0$	-50	mA	
I_{OK}	Output clamp current	$V_O < 0$	-50	mA	
I_O	Continuous output current		±50	mA	
	Continuous current through V_{CCA} , V_{CCB} , or GND		±100	mA	
T_J	Junction temperature		150	°C	
$R_{\theta JA}$	Junction-to-ambient thermal resistance	DW	46	°C/W	
		NS	65		
T_{stg}	Storage temperature	-65	150	°C	

(1) Stresses beyond those listed under *Absolute Maximum Ratings* may cause permanent damage to the device. These are stress ratings only, and functional operation of the device at these or any other conditions beyond those indicated under *Recommended Operating Conditions* is not implied. Exposure to absolute-maximum-rated conditions for extended periods may affect device reliability.

(2) This value is limited to 4.6V maximum.

(3) This value is limited to 6V maximum.

5.2 ESD Ratings

		VALUE	UNIT
$V_{(ESD)}$	Electrostatic discharge	Human body model (HBM), per ANSI/ESDA/JEDEC JS-001 ⁽¹⁾	±2000
		Charged-device model (CDM), per JEDEC specification JESD22-C101 ⁽²⁾	±1000

(1) JEDEC document JEP155 states that 500V HBM allows safe manufacturing with a standard ESD control process.

(2) JEDEC document JEP157 states that 250V CDM allows safe manufacturing with a standard ESD control process.

5.3 Recommended Operating Conditions

		V_{CCA}	V_{CCB}	MIN	NOM	MAX	UNIT
V_{CCA}	Supply voltage			2.3	3.3	3.6	V
V_{CCB}	Supply voltage			3	5	5.5	V
V_{IHA}	High-level input voltage	2.3V	3V	1.7			V
		2.7V	3V	2			
		3V	3.6V	2			
		3.6V	5.5V	2			
V_{IHB}	High-level input voltage	2.3V	3V	2			V
		2.7V	3V	2			
		3V	3.6V	2			
		3.6V	5.5V	3.85			

5.3 Recommended Operating Conditions (continued)

		V _{CCA}	V _{CCB}	MIN	NOM	MAX	UNIT
V _{ILA}	Low-level input voltage	2.3V	3V			0.7	V
		2.7V	3V			0.8	
		3V	3.6V			0.8	
		3.6V	5.5V			0.8	
V _{ILB}	Low-level input voltage	2.3V	3V			0.8	V
		2.7V	3V			0.8	
		3V	3.6V			0.8	
		3.6V	5.5V			1.65	
V _{IH}	High-level input voltage (control terminals) (referenced to V _{CCA})	2.3V	3V	1.7			V
		2.7V	3V	2			
		3V	3.6V	2			
		3.6V	5.5V	2			
V _{IL}	Low-level input voltage (control terminals) (referenced to V _{CCA})	2.3V	3V			0.7	V
		2.7V	3V			0.8	
		3V	3.6V			0.8	
		3.6V	5.5V			0.8	
V _{IA}	Input voltage			0		V _{CCA}	V
V _{IB}	Input voltage			0		V _{CCB}	V
V _{OA}	Output voltage			0		V _{CCA}	V
V _{OB}	Output voltage			0		V _{CCB}	V
I _{OHA}	High-level output current	2.3V	3V			-8	mA
		2.7V	3V			-12	
		3V	3V			-24	
		2.7V	4.5V			-24	
I _{OHB}	High-level output current	2.3V	3V			-12	mA
		2.7V	3V			-12	
		3V	3V			-24	
		2.7V	4.5V			-24	
I _{OLA}	Low-level output current	2.3V	3V			8	mA
		2.7V	3V			12	
		3V	3V			24	
		2.7V	4.5V			24	
I _{OLB}	Low-level output current	2.3V	3V			12	mA
		2.7V	3V			12	
		3V	3V			24	
		2.7V	4.5V			24	
Δt/Δv	Input transition rise or fall rate					10	ns/V
T _A	Operating free-air temperature			-40		85	°C

5.4 Thermal Information

THERMAL METRIC ⁽¹⁾		SN74LVCC3245A			UNIT
		DB (SSOP)	DBQ (SSOP)	PW (TSSOP)	
		24 PINS	24 PINS	24 PINS	
R _{θJA}	Junction-to-ambient thermal resistance	90.7	61	100.6	°C/W
R _{θJC(top)}	Junction-to-case (top) thermal resistance	51.9	44.8	44.7	°C/W
R _{θJB}	Junction-to-board thermal resistance	49.7	34.5	55.8	°C/W
ψ _{JT}	Junction-to-top characterization parameter	18.8	9.5	6.8	°C/W
ψ _{JB}	Junction-to-board characterization parameter	49.3	37.2	55.4	°C/W

(1) For more information about traditional and new thermal metrics, see the application note, [Semiconductor and IC Package Thermal Metrics](#).

5.5 Electrical Characteristics

over recommended operating free-air temperature range (unless otherwise noted)

PARAMETER	TEST CONDITIONS	V _{CCA}	V _{CCB}	MIN	TYP	MAX	UNIT
V _{OHA}	I _{OH} = -100μA	3V	3V	2.9	3		V
	I _{OH} = -8mA	2.3V	3V	2			
	I _{OH} = -12mA	2.7V	3V	2.2	2.5		
		3V	3V	2.4	2.8		
	I _{OH} = -24mA	3V	3V	2.2	2.6		
2.7V		4.5V	2	2.3			
V _{OHB}	I _{OH} = -100μA	3V	3V	2.9	3		V
	I _{OH} = -12mA	2.3V	3V	2.4			
		2.7V	3V	2.4	2.8		
	I _{OH} = -24mA	3V	3V	2.2	2.6		
2.7V		4.5V	3.2	4.2			
V _{OLA}	I _{OL} = 100μA	3V	3V			0.1	V
	I _{OL} = 8mA	2.3V	3V			0.6	
	I _{OL} = 12mA	2.7V	3V		0.1	0.5	
		3V	3V		0.2	0.5	
V _{OLB}	I _{OL} = 24mA	2.7V	4.5V		0.2	0.5	V
		3V	3V		0.2	0.5	
	I _{OL} = 12mA	2.3V	3V			0.4	
		3V	3V			0.5	
I _I	Control inputs V _I = V _{CCA} or GND	3.6V	3.6V		±0.1	±1	μA
			5.5V		±0.1	±1	
I _{off}	Input and output power-off leakage current V _I or V _O = 0 to 5.5V	V _{CCA} = 0 to 5.5V	V _{CCB} = 0V		±0.5	±2	μA
			V _{CCB} = 0V		±0.5	±2	
I _{OZ} ⁽¹⁾	A or B ports	V _O = V _{CCA/B} or GND, V _I = V _{IL} or V _{IH}	3.6V	3.6V	±0.5	±5	μA
I _{CCA}	B to A	A port = V _{CCA} or GND, I _O = 0	3.6V	Open	5	15	μA
		B port = V _{CCB} or GND, I _O = 0	3.6V	3.6V	5	15	
				5.5V	5	15	

5.5 Electrical Characteristics (continued)

over recommended operating free-air temperature range (unless otherwise noted)

PARAMETER		TEST CONDITIONS	V _{CCA}	V _{CCB}	MIN	TYP	MAX	UNIT
I _{CCB}	A to B	A port = V _{CCA} or GND, I _O = 0	3.6V	3.6V		5	15	μA
				5.5V		8	18	
ΔI _{CCA} ⁽²⁾	A port	V _I = V _{CCA} – 0.6V, Other inputs at V _{CCA} or GND, \overline{OE} at GND and DIR at V _{CCA}	3.6V	3.6V		0.35	0.5	mA
	\overline{OE}	V _I = V _{CCA} – 0.6V, Other inputs at V _{CCA} or GND, DIR at V _{CCA}	3.6V	3.6V		0.35	0.5	
	DIR	V _I = V _{CCA} – 0.6V, Other inputs at V _{CCA} or GND, \overline{OE} at GND	3.6V	3.6V		0.35	0.5	
ΔI _{CCB} ⁽²⁾	B port	V _I = V _{CCB} – 2.1V, Other inputs at V _{CCB} or GND, \overline{OE} at GND and DIR at GND	3.6V	5.5V		1	1.5	mA
C _i	Control inputs	V _I = V _{CCA} or GND	Open	Open		4		pF
C _{io}	A or B ports	V _O = V _{CCA/B} or GND	3.3V	5V		18.5		pF

- (1) For I/O ports, the parameter I_{OZ} includes the input leakage current.
(2) This is the increase in supply current for each input that is at one of the specified voltage levels, rather than 0V or the associated V_{CC}.

5.6 Switching Characteristics

over recommended operating free-air temperature range (unless otherwise noted) (see [Figure 6-1](#) through [Figure 6-4](#))

PARAMETER	FROM (INPUT)	TO (OUTPUT)	V _{CCA} , V _{CCB}	MIN	MAX	UNIT
t _{PHL}	A	B	V _{CCA} = 2.5V ± 0.2V, V _{CCB} = 3.3V ± 0.3V	1	9.4	ns
			V _{CCA} = 2.7V TO 3.6V, V _{CCB} = 5V ± 0.5V	1	6	
			V _{CCA} = 2.7V TO 3.6V, V _{CCB} = 3.3V ± 0.3V	1	7.1	
t _{PLH}	A	B	V _{CCA} = 2.5V ± 0.2V, V _{CCB} = 3.3V ± 0.3V	1	9.1	ns
			V _{CCA} = 2.7V TO 3.6V, V _{CCB} = 5V ± 0.5V	1	5.3	
			V _{CCA} = 2.7V TO 3.6V, V _{CCB} = 3.3V ± 0.3V	1	7.2	
t _{PHL}	B	A	V _{CCA} = 2.5V ± 0.2V, V _{CCB} = 3.3V ± 0.3V	1	11.2	ns
			V _{CCA} = 2.7V TO 3.6V, V _{CCB} = 5V ± 0.5V	1	5.8	
			V _{CCA} = 2.7V TO 3.6V, V _{CCB} = 3.3V ± 0.3V	1	6.4	
t _{PLH}	B	A	V _{CCA} = 2.5V ± 0.2V, V _{CCB} = 3.3V ± 0.3V	1	9.9	ns
			V _{CCA} = 2.7V TO 3.6V, V _{CCB} = 5V ± 0.5V	1	7	
			V _{CCA} = 2.7V TO 3.6V, V _{CCB} = 3.3V ± 0.3V	1	7.6	
t _{PZL}	\overline{OE}	A	V _{CCA} = 2.5V ± 0.2V, V _{CCB} = 3.3V ± 0.3V	1	14.5	ns
			V _{CCA} = 2.7V TO 3.6V, V _{CCB} = 5V ± 0.5V	1	9.2	
			V _{CCA} = 2.7V TO 3.6V, V _{CCB} = 3.3V ± 0.3V	1	9.7	
t _{PZH}	\overline{OE}	A	V _{CCA} = 2.5V ± 0.2V, V _{CCB} = 3.3V ± 0.3V	1	12.9	ns
			V _{CCA} = 2.7V TO 3.6V, V _{CCB} = 5V ± 0.5V	1	9.5	
			V _{CCA} = 2.7V TO 3.6V, V _{CCB} = 3.3V ± 0.3V	1	9.5	
t _{PZL}	\overline{OE}	B	V _{CCA} = 2.5V ± 0.2V, V _{CCB} = 3.3V ± 0.3V	1	13	ns
			V _{CCA} = 2.7V TO 3.6V, V _{CCB} = 5V ± 0.5V	1	8.1	
			V _{CCA} = 2.7V TO 3.6V, V _{CCB} = 3.3V ± 0.3V	1	9.2	

5.6 Switching Characteristics (continued)

over recommended operating free-air temperature range (unless otherwise noted) (see Figure 6-1 through Figure 6-4)

PARAMETER	FROM (INPUT)	TO (OUTPUT)	V _{CCA} , V _{CCB}	MIN	MAX	UNIT
t _{PZH}	\overline{OE}	B	V _{CCA} = 2.5V ± 0.2V, V _{CCB} = 3.3V ± 0.3V	1	12.8	ns
			V _{CCA} = 2.7V TO 3.6V, V _{CCB} = 5V ± 0.5V	1	8.4	
			V _{CCA} = 2.7V TO 3.6V, V _{CCB} = 3.3V ± 0.3V	1	9.9	
t _{PLZ}	\overline{OE}	A	V _{CCA} = 2.5V ± 0.2V, V _{CCB} = 3.3V ± 0.3V	1	7.1	ns
			V _{CCA} = 2.7V TO 3.6V, V _{CCB} = 5V ± 0.5V	1	7	
			V _{CCA} = 2.7V TO 3.6V, V _{CCB} = 3.3V ± 0.3V	1	6.6	
t _{PHZ}	\overline{OE}	A	V _{CCA} = 2.5V ± 0.2V, V _{CCB} = 3.3V ± 0.3V	1	7.3	ns
			V _{CCA} = 2.7V TO 3.6V, V _{CCB} = 5V ± 0.5V	1	7.8	
			V _{CCA} = 2.7V TO 3.6V, V _{CCB} = 3.3V ± 0.3V	1	6.9	
t _{PLZ}	\overline{OE}	B	V _{CCA} = 2.5V ± 0.2V, V _{CCB} = 3.3V ± 0.3V	1	8.8	ns
			V _{CCA} = 2.7V TO 3.6V, V _{CCB} = 5V ± 0.5V	1	7.3	
			V _{CCA} = 2.7V TO 3.6V, V _{CCB} = 3.3V ± 0.3V	1	7.5	
t _{PHZ}	\overline{OE}	B	V _{CCA} = 2.5V ± 0.2V, V _{CCB} = 3.3V ± 0.3V	1	8.9	ns
			V _{CCA} = 2.7V TO 3.6V, V _{CCB} = 5V ± 0.5V	1	7	
			V _{CCA} = 2.7V TO 3.6V, V _{CCB} = 3.3V ± 0.3V	1	7.9	

5.7 Operating Characteristics

V_{CCA} = 3.3V, V_{CCB} = 5V, T_A = 25°C

PARAMETER		TEST CONDITIONS	TYP	UNIT
C _{pd}	Power dissipation capacitance per transceiver	Outputs enabled	C _L = 50, f = 10MHz	38
		Outputs disabled		4.5

5.8 Typical Characteristics

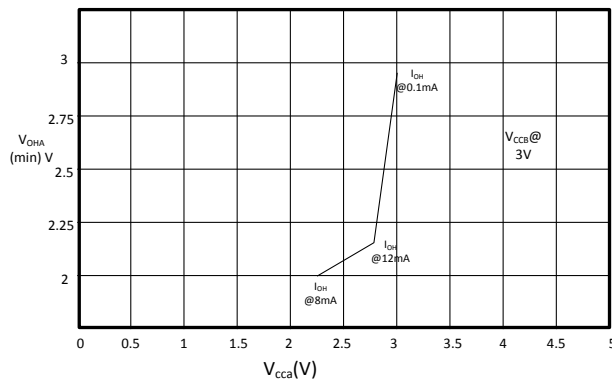
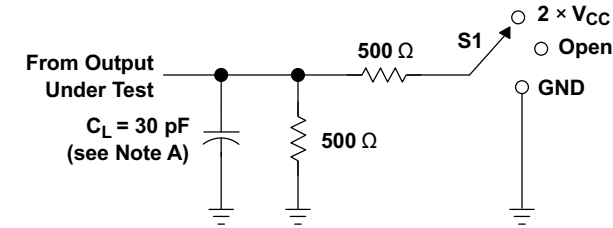


Figure 5-1. V_{OHA(min)} VS V_{CCA}

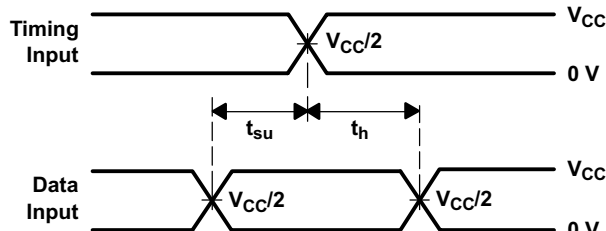
6 Parameter Measurement Information

6.1 A Port ($V_{CCA} = 2.5V \pm 0.2V$ and $V_{CCB} = 3.3V \pm 0.3V$)

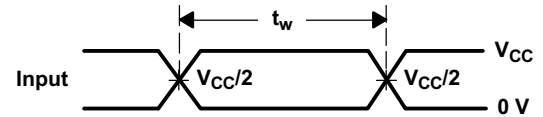


LOAD CIRCUIT

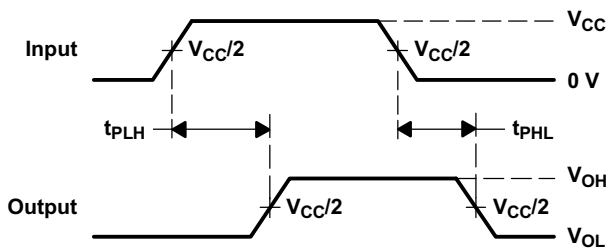
TEST	S1
t_{pd}	Open
t_{PLZ}/t_{PZL}	2 $\times V_{CC}$
t_{PHZ}/t_{PZH}	GND



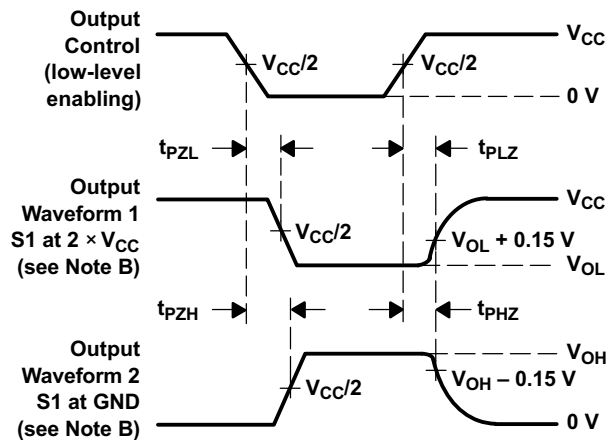
VOLTAGE WAVEFORMS
SETUP AND HOLD TIMES



VOLTAGE WAVEFORMS
PULSE DURATION



VOLTAGE WAVEFORMS
PROPAGATION DELAY TIMES

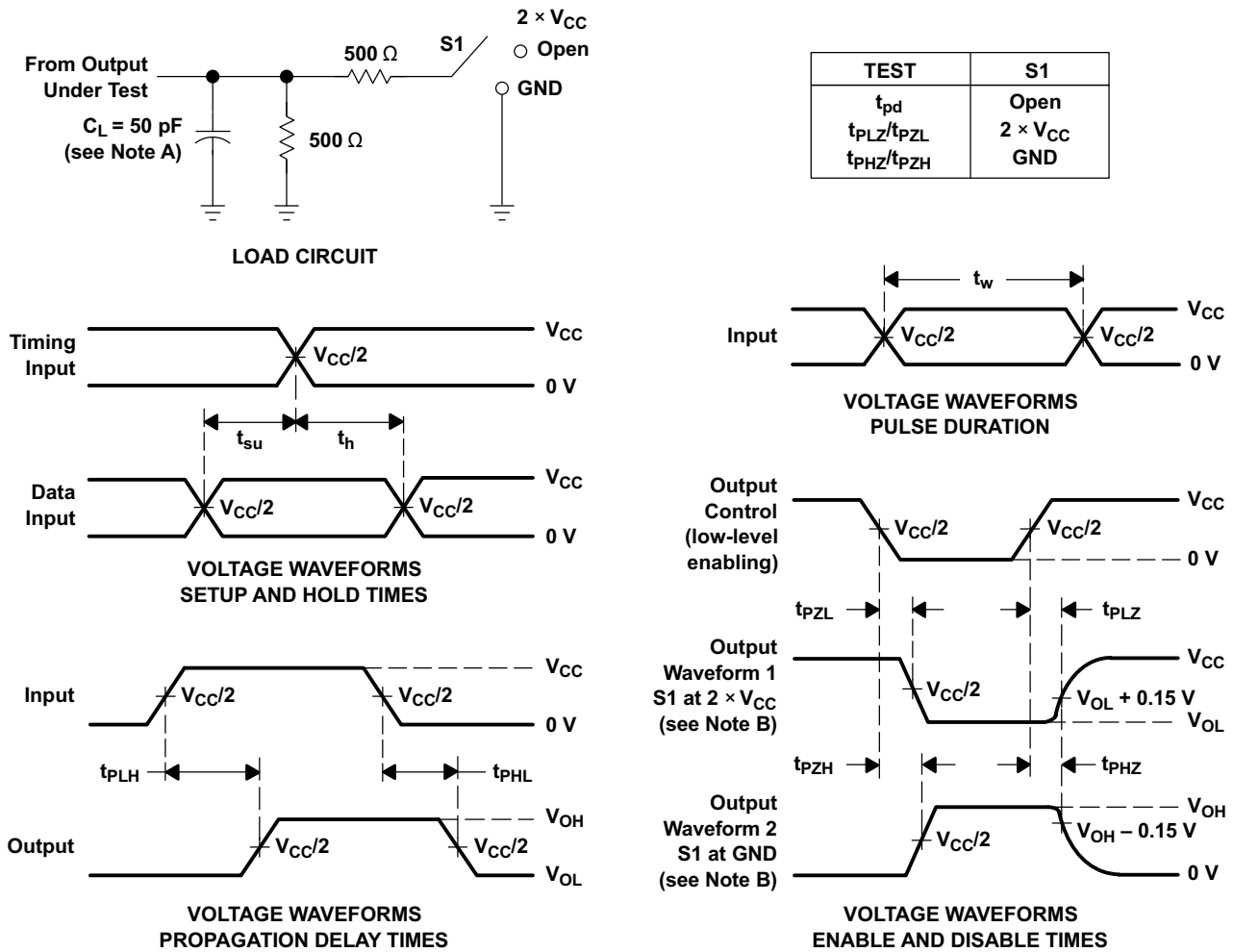


VOLTAGE WAVEFORMS
ENABLE AND DISABLE TIMES

- C_L includes probe and jig capacitance.
- Waveform 1 is for an output with internal conditions such that the output is low, except when disabled by the output control. Waveform 2 is for an output with internal conditions such that the output is high, except when disabled by the output control.
- All input pulses are supplied by generators having the following characteristics: $PRR \leq 10\text{MHz}$, $Z_O = 50\Omega$, $t_r \leq 2\text{ns}$, $t_f \leq 2\text{ns}$.
- The outputs are measured one at a time, with one transition per measurement.
- t_{PZL} and t_{PZH} are the same as t_{dis} .
- t_{PZL} and t_{PZH} are the same as t_{en} .
- t_{PLH} and t_{PHL} are the same as t_{pd} .
- All parameters and waveforms are not applicable to all devices.

Figure 6-1. Load Circuit and Voltage Waveforms

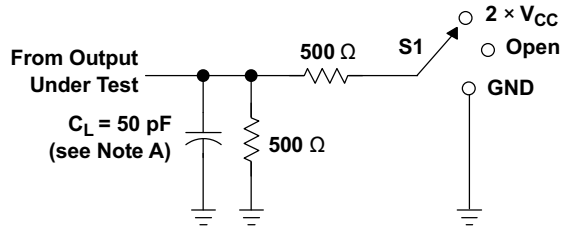
6.2 B Port ($V_{CCA} = 2.5V \pm 0.2V$ and $V_{CCB} = 3.3V \pm 0.3V$)



- A. C_L includes probe and jig capacitance.
- B. Waveform 1 is for an output with internal conditions such that the output is low, except when disabled by the output control. Waveform 2 is for an output with internal conditions such that the output is high, except when disabled by the output control.
- C. All input pulses are supplied by generators having the following characteristics: $PRR \leq 10\text{MHz}$, $Z_O = 50\Omega$, $t_r \leq 2\text{ns}$, $t_f \leq 2\text{ns}$.
- D. The outputs are measured one at a time, with one transition per measurement.
- E. t_{PLZ} and t_{PHZ} are the same as t_{dis} .
- F. t_{PZL} and t_{PZH} are the same as t_{en} .
- G. t_{PLH} and t_{PHL} are the same as t_{pd} .
- H. All parameters and waveforms are not applicable to all devices.

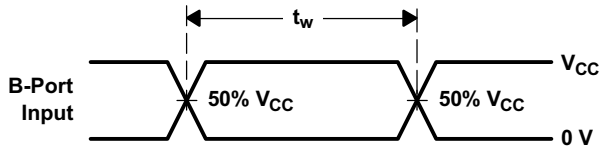
Figure 6-2. Load Circuit and Voltage Waveforms

6.3 B Port ($V_{CCA} = 3.6V$ and $V_{CCB} = 5.5V$)

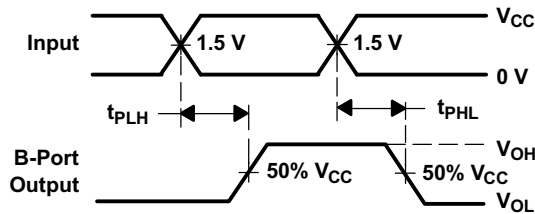


LOAD CIRCUIT

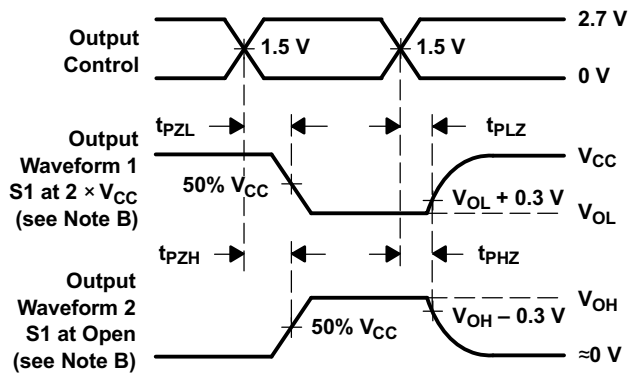
TEST	S1
t_{PLH}/t_{PHL}	Open
t_{PLZ}/t_{PZL}	$2 \times V_{CC}$
t_{PHZ}/t_{PZH}	Open



VOLTAGE WAVEFORMS
PULSE DURATION



VOLTAGE WAVEFORMS
PROPAGATION DELAY TIMES
NONINVERTING OUTPUTS

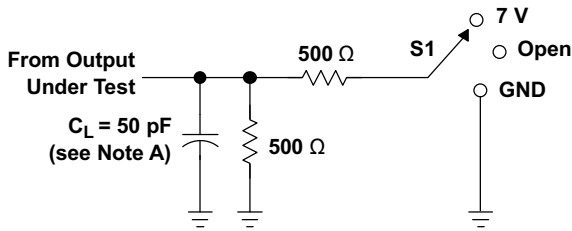


VOLTAGE WAVEFORMS
ENABLE AND DISABLE TIMES
LOW- AND HIGH-LEVEL ENABLING

- C_L includes probe and jig capacitance.
- Waveform 1 is for an output with internal conditions such that the output is low, except when disabled by the output control. Waveform 2 is for an output with internal conditions such that the output is high, except when disabled by the output control.
- All input pulses are supplied by generators having the following characteristics: $PRR \leq 10\text{MHz}$, $Z_O = 50\Omega$, $t_r \leq 2.5\text{ns}$, $t_f \leq 2.5\text{ns}$.
- The outputs are measured one at a time, with one transition per measurement.
- All parameters and waveforms are not applicable to all devices.

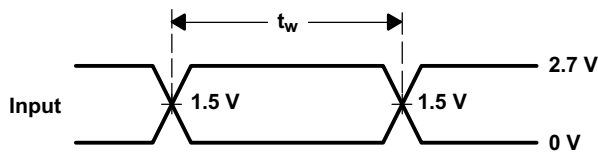
Figure 6-3. Load Circuit and Voltage Waveforms

6.4 A and B Port (V_{CCA} and $V_{CCB} = 3.6V$)

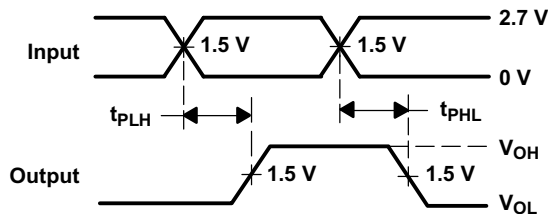


LOAD CIRCUIT

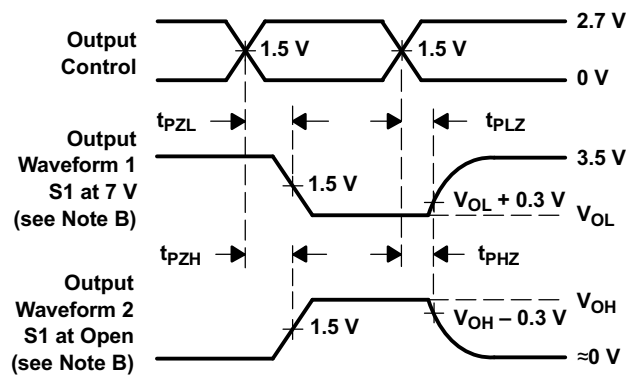
TEST	S1
t_{PLH}/t_{PHL}	Open
t_{PLZ}/t_{PZL}	7 V
t_{PHZ}/t_{PZH}	Open



**VOLTAGE WAVEFORMS
PULSE DURATION**



**VOLTAGE WAVEFORMS
PROPAGATION DELAY TIMES
NONINVERTING OUTPUTS**



**VOLTAGE WAVEFORMS
ENABLE AND DISABLE TIMES
LOW- AND HIGH-LEVEL ENABLING**

- A. C_L includes probe and jig capacitance.
- B. Waveform 1 is for an output with internal conditions such that the output is low, except when disabled by the output control. Waveform 2 is for an output with internal conditions such that the output is high, except when disabled by the output control.
- C. All input pulses are supplied by generators having the following characteristics: $PRR \leq 10MHz$, $Z_O = 50\Omega$, $t_r \leq 2.5ns$, $t_f \leq 2.5ns$.
- D. The outputs are measured one at a time, with one transition per measurement.
- E. All parameters and waveforms are not applicable to all devices.

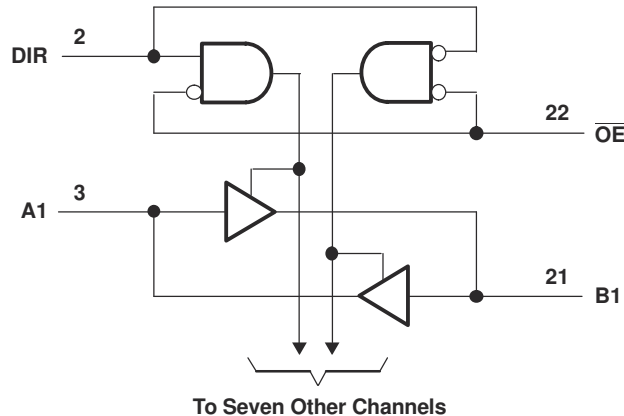
Figure 6-4. Load Circuit and Voltage Waveforms

7 Detailed Description

7.1 Overview

The SN74LVCC3245A device is designed for asynchronous communication between data buses. Glitch-free power supply sequencing allows either supply rail to be powered on or off in any order while providing robust power sequencing performance. The device transmits data from the A bus to the B bus or from the B bus to the A bus, depending on the logic level at the direction-control (DIR) input. The output-enable (\overline{OE}) input can be used to disable the device so the buses are effectively isolated. The control circuitry (DIR, \overline{OE}) is powered by V_{CCA} .

7.2 Functional Block Diagram



7.3 Feature Description

This device is a bidirectional level translator designed to operate from 2.3V to 3.6V on Port A and 3V to 5.5V on B port. The control inputs recommended operating specifications are referenced with respect to V_{CCA} Voltage.

7.4 Glitch-free Power Supply Sequencing

Either supply rail can be powered on or off in any order without producing a glitch on the I/Os (that is, where the output erroneously transitions to V_{CC} when it must be held low or vice versa). Glitches of this nature can be misinterpreted by a peripheral as a valid data bit, which could trigger a false device reset of the peripheral, a false device configuration of the peripheral, or even a false data initialization by the peripheral.

7.5 V_{CC} Isolation and V_{CC} Disconnect

The I/O's enter a high-impedance state when either supply is $<100\text{mV}$ or left floating (disconnected), while the other supply is still connected to the device. It is recommended that the I/O's for this device are not driven or kept low before floating (disconnecting) either supply. The maximum leakage into or out of any input or output pin on the device is specified by I_{off} in the *Electrical Characteristics*.

7.6 Device Functional Modes

Table 7-1 lists the functional modes of the SN74LVCC3245A.

Table 7-1. Function Table (Each Transceiver)

INPUTS		OPERATION
\overline{OE}	DIR	
L	L	B data to A bus
L	H	A data to B bus
H	X	Isolation

8 Application and Implementation

Note

Information in the following applications sections is not part of the TI component specification, and TI does not warrant its accuracy or completeness. TI's customers are responsible for determining suitability of components for their purposes, as well as validating and testing their design implementation to confirm system functionality.

8.1 Application Information

The SN74LVCC3245A device is a bidirectional level translator designed to operate from 2.3V to 3.6V on Port A and 3V to 5.5V on B port and designed for asynchronous communication between data buses. The device transmits data from the A bus to the B bus or from the B bus to the A bus, depending on the logic level at the direction-control (DIR) input.

8.2 Typical Application

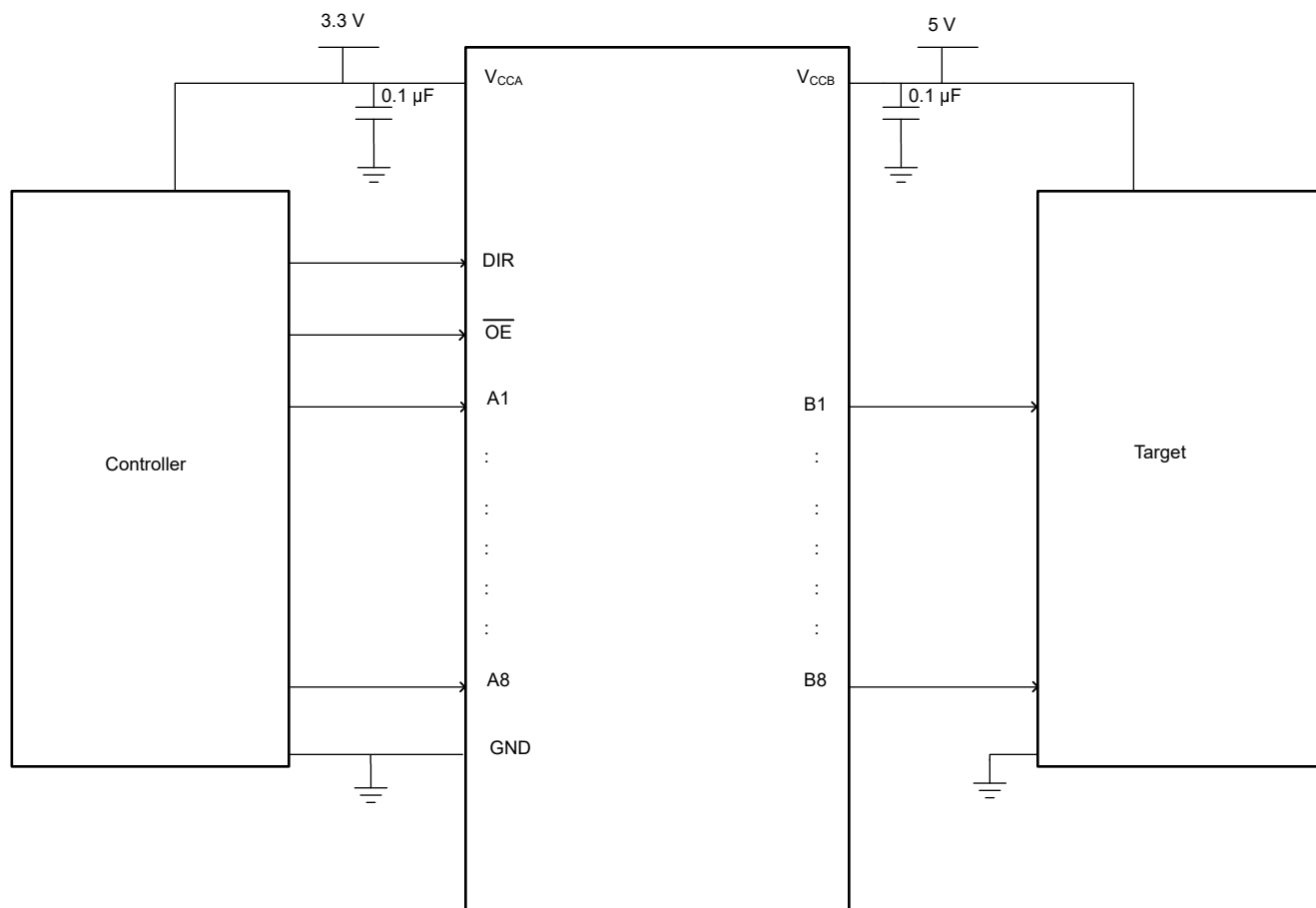


Figure 8-1. Typical Application

8.2.1 Design Requirements

This device can be used as bidirectional level translator depending on the DIR pin. The application describes the level translation of controller with signals at 3.3V to target operating at 5V. The $\overline{\text{OE}}$ pin is low and DIR pin is 3.3V high.

8.2.2 Detailed Design Procedure

Use the procedure that follows for the design:

1. Recommended Input Conditions
 - Rise time and fall time specs. See ($\Delta t/\Delta V$) in the [Recommended Operating Conditions](#) table.
 - Specified high and low levels. See (V_{IH} and V_{IL}) in the [Recommended Operating Conditions](#) table.
 - Inputs are overvoltage tolerant allowing them to go as high as (V_I max) in the [Recommended Operating Conditions](#) table at any valid V_{CC} .
2. Absolute Maximum Output Conditions
 - Load currents should not exceed (I_O max) per output and should not exceed total current (continuous current through V_{CC} or GND) for the part. These limits are located in the [Absolute Maximum Ratings](#) table.
 - All the voltages on A and B ports should not exceed above V_{CCA} or V_{CCB} to prevent the biasing of Electrostatic discharge (ESD) diodes.

8.2.3 Application Curve

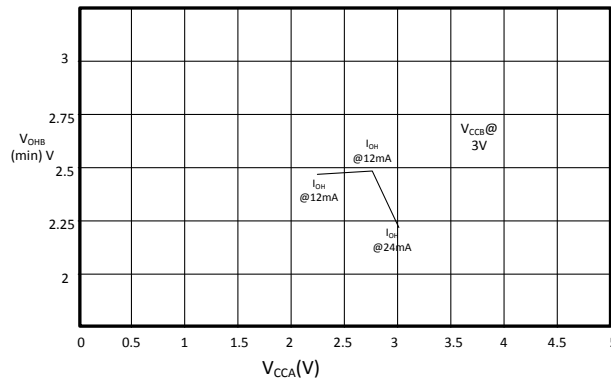


Figure 8-2. $V_{OH(min)}$ vs V_{CCA}

8.3 Power Supply Recommendations

The power supply can be any voltage between the minimum and maximum supply voltage rating located in the [Recommended Operating Conditions](#) table.

Each V_{CC} pin should have a good bypass capacitor to prevent power disturbance. For devices with a single supply, a 0.1 μF capacitor is recommended and if there are multiple V_{CC} pins then 0.01 μF or 0.022 μF capacitor is recommended for each power pin. It is okay to parallel multiple bypass capacitors to reject different frequencies of noise. 0.1 μF and 1 μF capacitors are commonly used in parallel. The bypass capacitor must be installed as close to the power pin as possible for best results.

8.4 Layout

8.4.1 Layout Guidelines

When using multiple bit logic devices inputs should not ever float. In many cases, functions or parts of functions of digital logic devices are unused; for example, when only two inputs of a triple-input AND gate are used or only 3 of the 4 buffer gates are used. Such input pins should not be left unconnected because the undefined voltages at the outside connections result in undefined operational states. Specified below are the rules that must be observed under all circumstances. All unused inputs of digital logic devices must be connected to a high or low bias to prevent them from floating. The logic level that must be applied to any particular unused input depends on the function of the device. Generally they will be tied to GND or V_{CC} whichever make more sense or is more convenient.

8.4.2 Layout Example

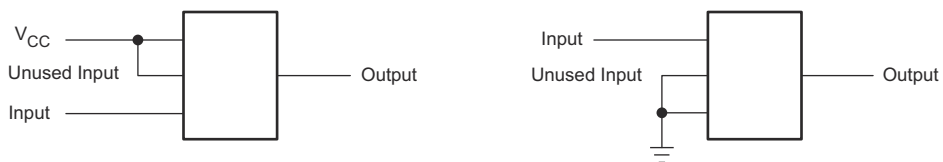


Figure 8-3. Layout Example

8.4.3 Power-Up Considerations

Always apply a ground reference to the GND pins first. This device is designed for glitch free power sequencing without any supply sequencing requirements such as ramp order. This device was designed with various power supply sequencing methods in mind to help prevent unintended triggering of downstream devices, as described in Glitch-free Power Supply Sequencing.

9 Device and Documentation Support

9.1 Documentation Support

9.1.1 Related Documentation

For related documentation, see the following:

- Texas Instruments, [Implications of Slow or Floating CMOS Inputs](#)
- Texas Instruments, [Voltage-Level-Translation Devices](#)

9.2 Receiving Notification of Documentation Updates

To receive notification of documentation updates, navigate to the device product folder on ti.com. Click on *Notifications* to register and receive a weekly digest of any product information that has changed. For change details, review the revision history included in any revised document.

9.3 Support Resources

[TI E2E™ support forums](#) are an engineer's go-to source for fast, verified answers and design help — straight from the experts. Search existing answers or ask your own question to get the quick design help you need.

Linked content is provided "AS IS" by the respective contributors. They do not constitute TI specifications and do not necessarily reflect TI's views; see TI's [Terms of Use](#).

9.4 Trademarks

TI E2E™ is a trademark of Texas Instruments.

All trademarks are the property of their respective owners.

9.5 Electrostatic Discharge Caution



This integrated circuit can be damaged by ESD. Texas Instruments recommends that all integrated circuits be handled with appropriate precautions. Failure to observe proper handling and installation procedures can cause damage.

ESD damage can range from subtle performance degradation to complete device failure. Precision integrated circuits may be more susceptible to damage because very small parametric changes could cause the device not to meet its published specifications.

9.6 Glossary

[TI Glossary](#) This glossary lists and explains terms, acronyms, and definitions.

10 Revision History

NOTE: Page numbers for previous revisions may differ from page numbers in the current version.

Changes from Revision Q (December 2022) to Revision R (May 2026)	Page
• Updated the Description.....	1
• Updated the current values in the <i>Electrical Characteristics</i> section	6
• Added the IOFF characteristics in the <i>Electrical Characteristics</i> section	6
• Added the <i>VCC Isolation and VCC</i> section	13
• Added the <i>Glitch-free Power Supply Sequencing</i> section	13
• Updated the <i>Power Supply Recommendations</i> section.....	15

Changes from Revision P (December 2015) to Revision Q (December 2022)	Page
• Updated the numbering format for tables, figures, and cross-references throughout the document.....	1
• Added thermal information for DB and PW package.....	6
• Added inclusive terminology.....	14

11 Mechanical, Packaging, and Orderable Information

The following pages include mechanical packaging and orderable information. This information is the most current data available for the designated devices. This data is subject to change without notice and revision of this document. For browser based versions of this data sheet, refer to the left hand navigation.

PACKAGING INFORMATION

Orderable part number	Status (1)	Material type (2)	Package Pins	Package qty Carrier	RoHS (3)	Lead finish/ Ball material (4)	MSL rating/ Peak reflow (5)	Op temp (°C)	Part marking (6)
SN74LVCC3245ADBQR	Active	Production	SSOP (DBQ) 24	2500 LARGE T&R	Yes	NIPDAU	Level-2-260C-1 YEAR	-40 to 85	LVCC3245A
SN74LVCC3245ADBQR.B	Active	Production	SSOP (DBQ) 24	2500 LARGE T&R	Yes	NIPDAU	Level-2-260C-1 YEAR	-40 to 85	LVCC3245A
SN74LVCC3245ADBR	Active	Production	SSOP (DB) 24	2000 LARGE T&R	Yes	NIPDAU	Level-1-260C-UNLIM	-40 to 85	LH245A
SN74LVCC3245ADBR.A	Active	Production	SSOP (DB) 24	2000 LARGE T&R	Yes	NIPDAU	Level-1-260C-UNLIM	-40 to 85	LH245A
SN74LVCC3245ADBR.B	Active	Production	SSOP (DB) 24	2000 LARGE T&R	Yes	NIPDAU	Level-1-260C-UNLIM	-40 to 85	LH245A
SN74LVCC3245ADBRE4	Active	Production	SSOP (DB) 24	2000 LARGE T&R	Yes	NIPDAU	Level-1-260C-UNLIM	-40 to 85	LH245A
SN74LVCC3245ADBRG4	Active	Production	SSOP (DB) 24	2000 LARGE T&R	Yes	NIPDAU	Level-1-260C-UNLIM	-40 to 85	LH245A
SN74LVCC3245ADW	Active	Production	SOIC (DW) 24	25 TUBE	Yes	NIPDAU	Level-1-260C-UNLIM	-40 to 85	LVCC3245A
SN74LVCC3245ADW.B	Active	Production	SOIC (DW) 24	25 TUBE	Yes	NIPDAU	Level-1-260C-UNLIM	-40 to 85	LVCC3245A
SN74LVCC3245ADWE4	Active	Production	SOIC (DW) 24	25 TUBE	Yes	NIPDAU	Level-1-260C-UNLIM	-40 to 85	LVCC3245A
SN74LVCC3245ADWG4	Active	Production	SOIC (DW) 24	25 TUBE	Yes	NIPDAU	Level-1-260C-UNLIM	-40 to 85	LVCC3245A
SN74LVCC3245ADWR	Active	Production	SOIC (DW) 24	2000 LARGE T&R	Yes	NIPDAU SN	Level-1-260C-UNLIM	-40 to 85	LVCC3245A
SN74LVCC3245ADWR.B	Active	Production	SOIC (DW) 24	2000 LARGE T&R	Yes	NIPDAU	Level-1-260C-UNLIM	-40 to 85	LVCC3245A
SN74LVCC3245ADWRG4	Active	Production	SOIC (DW) 24	2000 LARGE T&R	Yes	NIPDAU	Level-1-260C-UNLIM	-40 to 85	LVCC3245A
SN74LVCC3245ADWRG4.B	Active	Production	SOIC (DW) 24	2000 LARGE T&R	Yes	NIPDAU	Level-1-260C-UNLIM	-40 to 85	LVCC3245A
SN74LVCC3245ANSR	Active	Production	SOP (NS) 24	2000 LARGE T&R	Yes	NIPDAU	Level-1-260C-UNLIM	-40 to 85	LVCC3245A
SN74LVCC3245ANSR.B	Active	Production	SOP (NS) 24	2000 LARGE T&R	Yes	NIPDAU	Level-1-260C-UNLIM	-40 to 85	LVCC3245A
SN74LVCC3245APW	Active	Production	TSSOP (PW) 24	60 TUBE	Yes	NIPDAU	Level-1-260C-UNLIM	-40 to 85	LH245A
SN74LVCC3245APW.B	Active	Production	TSSOP (PW) 24	60 TUBE	Yes	NIPDAU	Level-1-260C-UNLIM	-40 to 85	LH245A
SN74LVCC3245APWR	Active	Production	TSSOP (PW) 24	2000 LARGE T&R	Yes	NIPDAU	Level-1-260C-UNLIM	-40 to 85	LH245A
SN74LVCC3245APWR.A	Active	Production	TSSOP (PW) 24	2000 LARGE T&R	Yes	NIPDAU	Level-1-260C-UNLIM	-40 to 85	LH245A
SN74LVCC3245APWRE4	Active	Production	TSSOP (PW) 24	2000 LARGE T&R	Yes	NIPDAU	Level-1-260C-UNLIM	-40 to 85	LH245A
SN74LVCC3245APWRG4	Active	Production	TSSOP (PW) 24	2000 LARGE T&R	Yes	NIPDAU	Level-1-260C-UNLIM	-40 to 85	LH245A
SN74LVCC3245APWT	Active	Production	TSSOP (PW) 24	250 SMALL T&R	Yes	NIPDAU	Level-1-260C-UNLIM	-40 to 85	LH245A
SN74LVCC3245APWT.B	Active	Production	TSSOP (PW) 24	250 SMALL T&R	Yes	NIPDAU	Level-1-260C-UNLIM	-40 to 85	LH245A
SN74LVCC3245APWTG4	Active	Production	TSSOP (PW) 24	250 SMALL T&R	Yes	NIPDAU	Level-1-260C-UNLIM	-40 to 85	LH245A

(1) **Status:** For more details on status, see our [product life cycle](#).

(2) **Material type:** When designated, preproduction parts are prototypes/experimental devices, and are not yet approved or released for full production. Testing and final process, including without limitation quality assurance, reliability performance testing, and/or process qualification, may not yet be complete, and this item is subject to further changes or possible discontinuation. If available for ordering, purchases will be subject to an additional waiver at checkout, and are intended for early internal evaluation purposes only. These items are sold without warranties of any kind.

(3) **RoHS values:** Yes, No, RoHS Exempt. See the [TI RoHS Statement](#) for additional information and value definition.

(4) **Lead finish/Ball material:** Parts may have multiple material finish options. Finish options are separated by a vertical ruled line. Lead finish/Ball material values may wrap to two lines if the finish value exceeds the maximum column width.

(5) **MSL rating/Peak reflow:** The moisture sensitivity level ratings and peak solder (reflow) temperatures. In the event that a part has multiple moisture sensitivity ratings, only the lowest level per JEDEC standards is shown. Refer to the shipping label for the actual reflow temperature that will be used to mount the part to the printed circuit board.

(6) **Part marking:** There may be an additional marking, which relates to the logo, the lot trace code information, or the environmental category of the part.

Multiple part markings will be inside parentheses. Only one part marking contained in parentheses and separated by a "~" will appear on a part. If a line is indented then it is a continuation of the previous line and the two combined represent the entire part marking for that device.

Important Information and Disclaimer: The information provided on this page represents TI's knowledge and belief as of the date that it is provided. TI bases its knowledge and belief on information provided by third parties, and makes no representation or warranty as to the accuracy of such information. Efforts are underway to better integrate information from third parties. TI has taken and continues to take reasonable steps to provide representative and accurate information but may not have conducted destructive testing or chemical analysis on incoming materials and chemicals. TI and TI suppliers consider certain information to be proprietary, and thus CAS numbers and other limited information may not be available for release.

In no event shall TI's liability arising out of such information exceed the total purchase price of the TI part(s) at issue in this document sold by TI to Customer on an annual basis.

OTHER QUALIFIED VERSIONS OF SN74LVCC3245A :

- Enhanced Product : [SN74LVCC3245A-EP](#)

NOTE: Qualified Version Definitions:

- Enhanced Product - Supports Defense, Aerospace and Medical Applications

TAPE AND REEL INFORMATION

QUADRANT ASSIGNMENTS FOR PIN 1 ORIENTATION IN TAPE

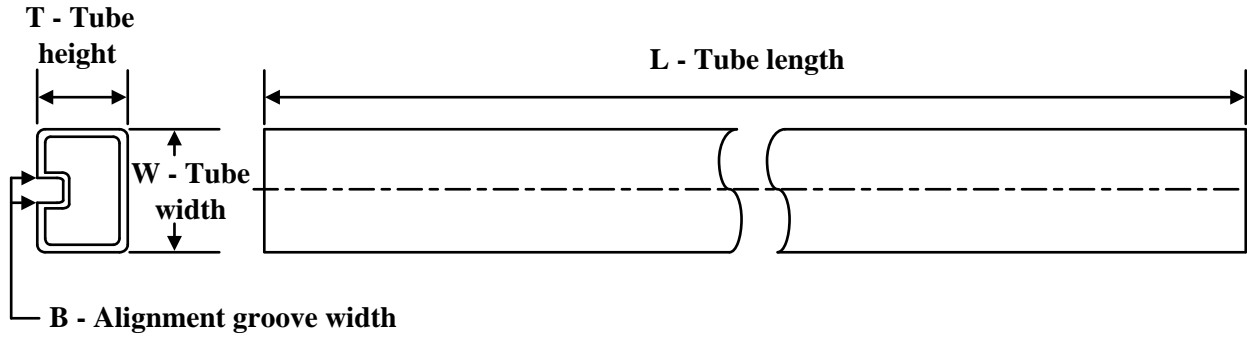

*All dimensions are nominal

Device	Package Type	Package Drawing	Pins	SPQ	Reel Diameter (mm)	Reel Width W1 (mm)	A0 (mm)	B0 (mm)	K0 (mm)	P1 (mm)	W (mm)	Pin1 Quadrant
SN74LVCC3245ADBQR	SSOP	DBQ	24	2500	330.0	16.4	6.5	9.0	2.1	8.0	16.0	Q1
SN74LVCC3245ADBR	SSOP	DB	24	2000	330.0	16.4	8.2	8.8	2.5	12.0	16.0	Q1
SN74LVCC3245ADWR	SOIC	DW	24	2000	330.0	24.4	10.75	15.7	2.7	12.0	24.0	Q1
SN74LVCC3245ADWRG4	SOIC	DW	24	2000	330.0	24.4	10.75	15.7	2.7	12.0	24.0	Q1
SN74LVCC3245ANSR	SOP	NS	24	2000	330.0	24.4	8.3	15.4	2.6	12.0	24.0	Q1
SN74LVCC3245APWR	TSSOP	PW	24	2000	330.0	16.4	6.95	8.3	1.6	8.0	16.0	Q1
SN74LVCC3245APWT	TSSOP	PW	24	250	330.0	16.4	6.95	8.3	1.6	8.0	16.0	Q1

TAPE AND REEL BOX DIMENSIONS


*All dimensions are nominal

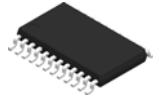
Device	Package Type	Package Drawing	Pins	SPQ	Length (mm)	Width (mm)	Height (mm)
SN74LVCC3245ADBQR	SSOP	DBQ	24	2500	353.0	353.0	32.0
SN74LVCC3245ADBR	SSOP	DB	24	2000	353.0	353.0	32.0
SN74LVCC3245ADWR	SOIC	DW	24	2000	350.0	350.0	43.0
SN74LVCC3245ADWRG4	SOIC	DW	24	2000	350.0	350.0	43.0
SN74LVCC3245ANSR	SOP	NS	24	2000	356.0	356.0	45.0
SN74LVCC3245APWR	TSSOP	PW	24	2000	353.0	353.0	32.0
SN74LVCC3245APWT	TSSOP	PW	24	250	353.0	353.0	32.0

TUBE


*All dimensions are nominal

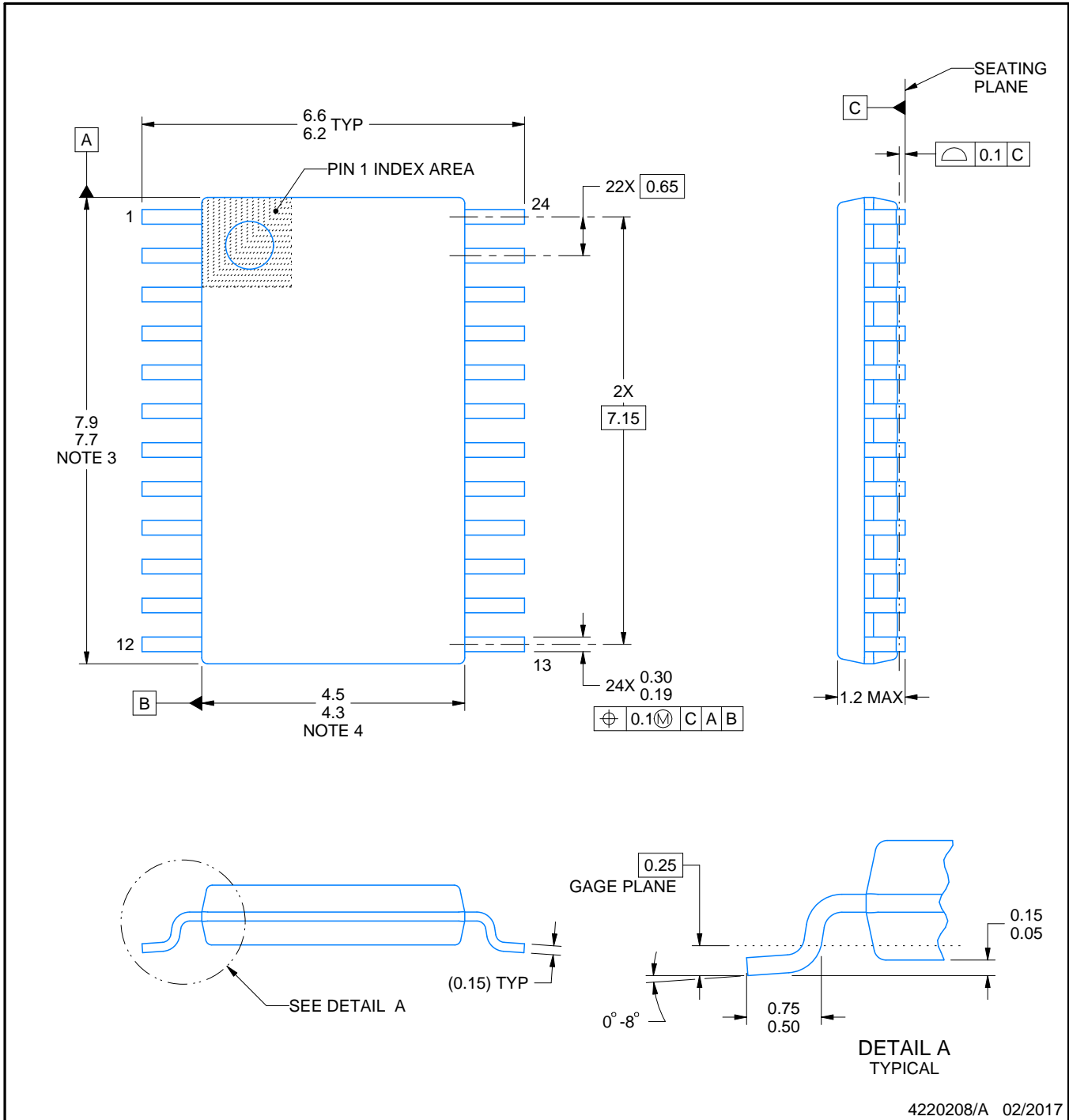
Device	Package Name	Package Type	Pins	SPQ	L (mm)	W (mm)	T (μm)	B (mm)
SN74LVCC3245ADW	DW	SOIC	24	25	506.98	12.7	4826	6.6
SN74LVCC3245ADW.B	DW	SOIC	24	25	506.98	12.7	4826	6.6
SN74LVCC3245ADWE4	DW	SOIC	24	25	506.98	12.7	4826	6.6
SN74LVCC3245ADWG4	DW	SOIC	24	25	506.98	12.7	4826	6.6
SN74LVCC3245APW	PW	TSSOP	24	60	530	10.2	3600	3.5
SN74LVCC3245APW.B	PW	TSSOP	24	60	530	10.2	3600	3.5

PW0024A



PACKAGE OUTLINE
TSSOP - 1.2 mm max height

SMALL OUTLINE PACKAGE



NOTES:

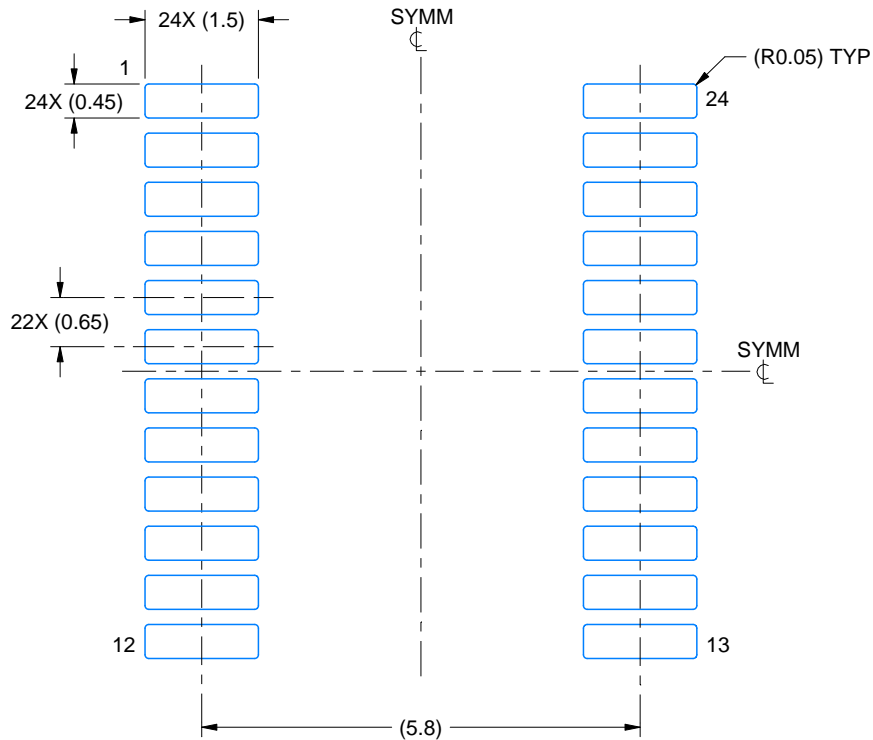
1. All linear dimensions are in millimeters. Any dimensions in parenthesis are for reference only. Dimensioning and tolerancing per ASME Y14.5M.
2. This drawing is subject to change without notice.
3. This dimension does not include mold flash, protrusions, or gate burrs. Mold flash, protrusions, or gate burrs shall not exceed 0.15 mm per side.
4. This dimension does not include interlead flash. Interlead flash shall not exceed 0.25 mm per side.
5. Reference JEDEC registration MO-153.

EXAMPLE BOARD LAYOUT

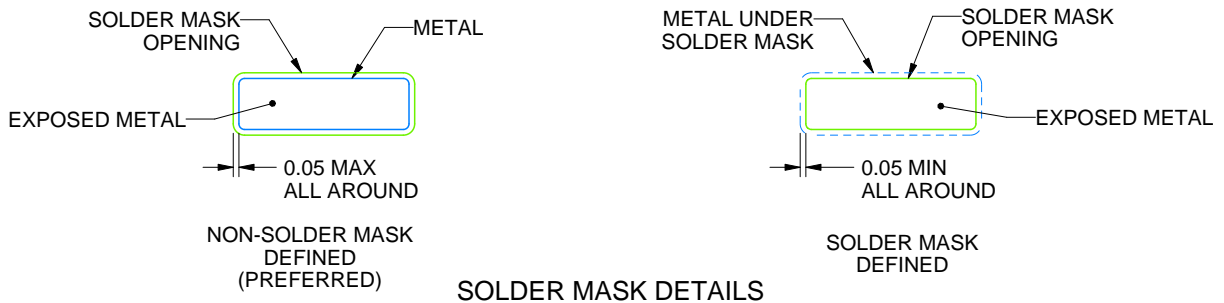
PW0024A

TSSOP - 1.2 mm max height

SMALL OUTLINE PACKAGE



LAND PATTERN EXAMPLE
EXPOSED METAL SHOWN
SCALE: 10X



SOLDER MASK DETAILS

4220208/A 02/2017

NOTES: (continued)

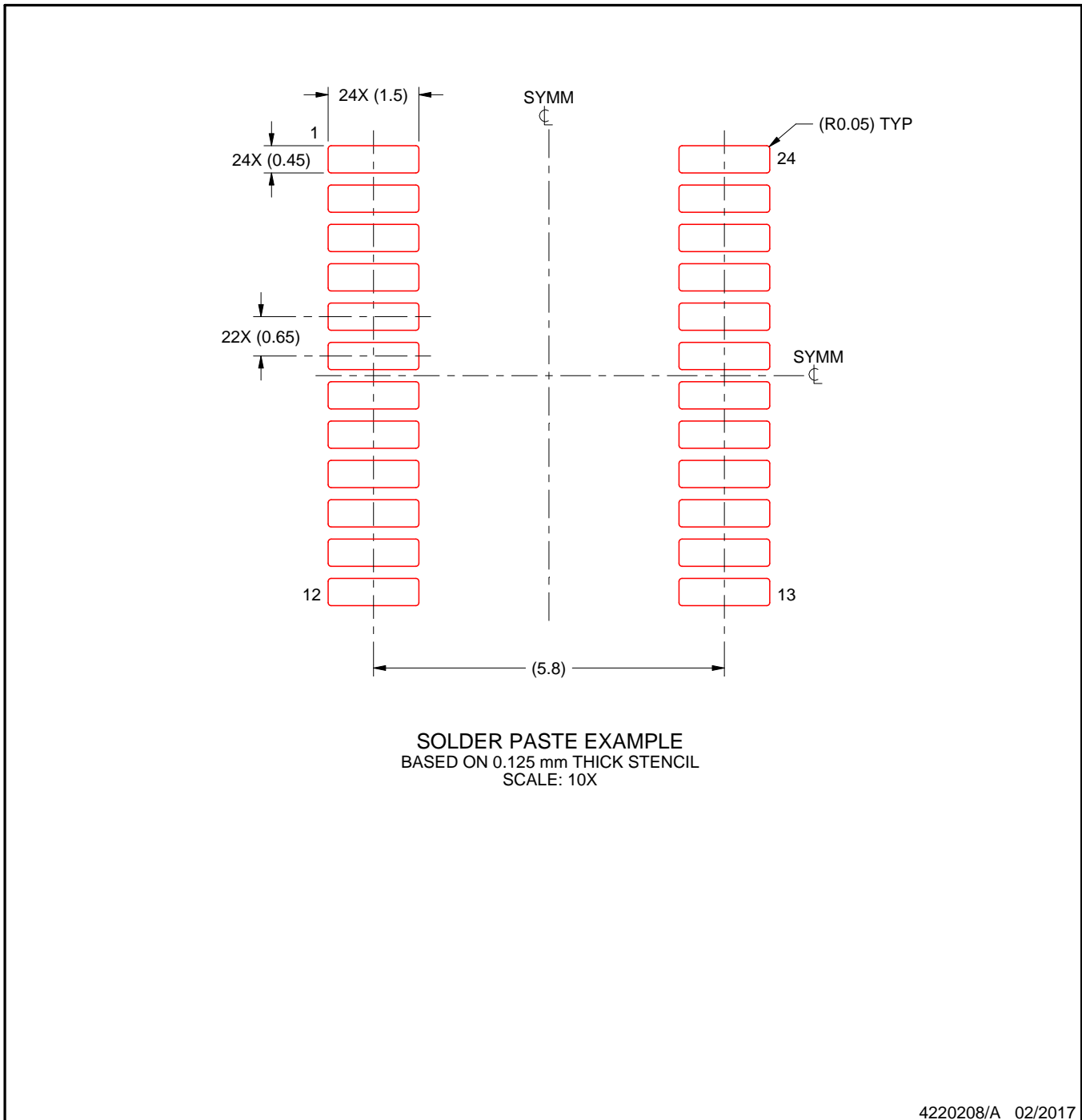
- 6. Publication IPC-7351 may have alternate designs.
- 7. Solder mask tolerances between and around signal pads can vary based on board fabrication site.

EXAMPLE STENCIL DESIGN

PW0024A

TSSOP - 1.2 mm max height

SMALL OUTLINE PACKAGE



NOTES: (continued)

8. Laser cutting apertures with trapezoidal walls and rounded corners may offer better paste release. IPC-7525 may have alternate design recommendations.
9. Board assembly site may have different recommendations for stencil design.

MECHANICAL DATA

NS (R-PDSO-G**)

PLASTIC SMALL-OUTLINE PACKAGE

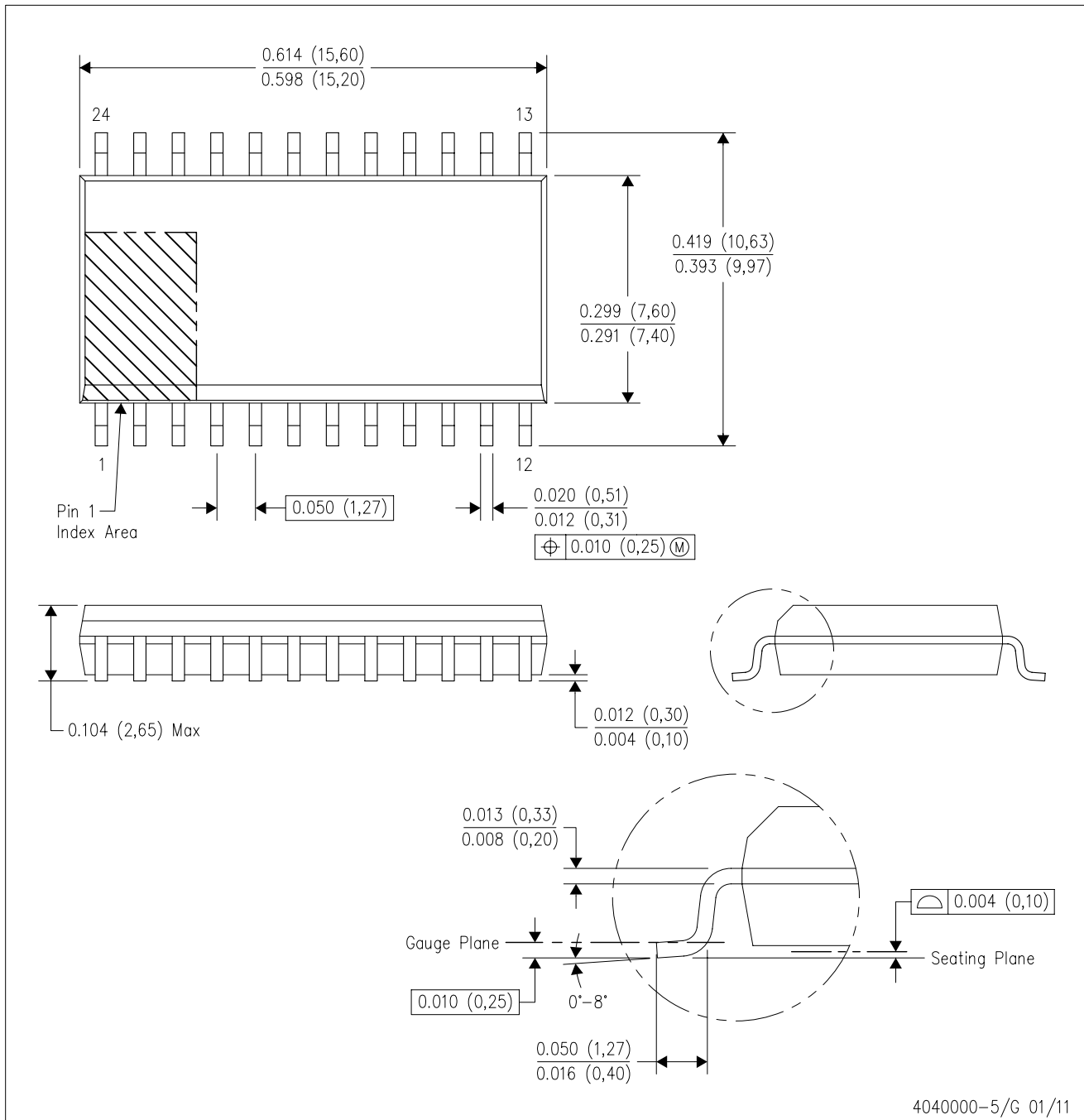
14-PINS SHOWN



- NOTES:
- A. All linear dimensions are in millimeters.
 - B. This drawing is subject to change without notice.
 - C. Body dimensions do not include mold flash or protrusion, not to exceed 0,15.

DW (R-PDSO-G24)

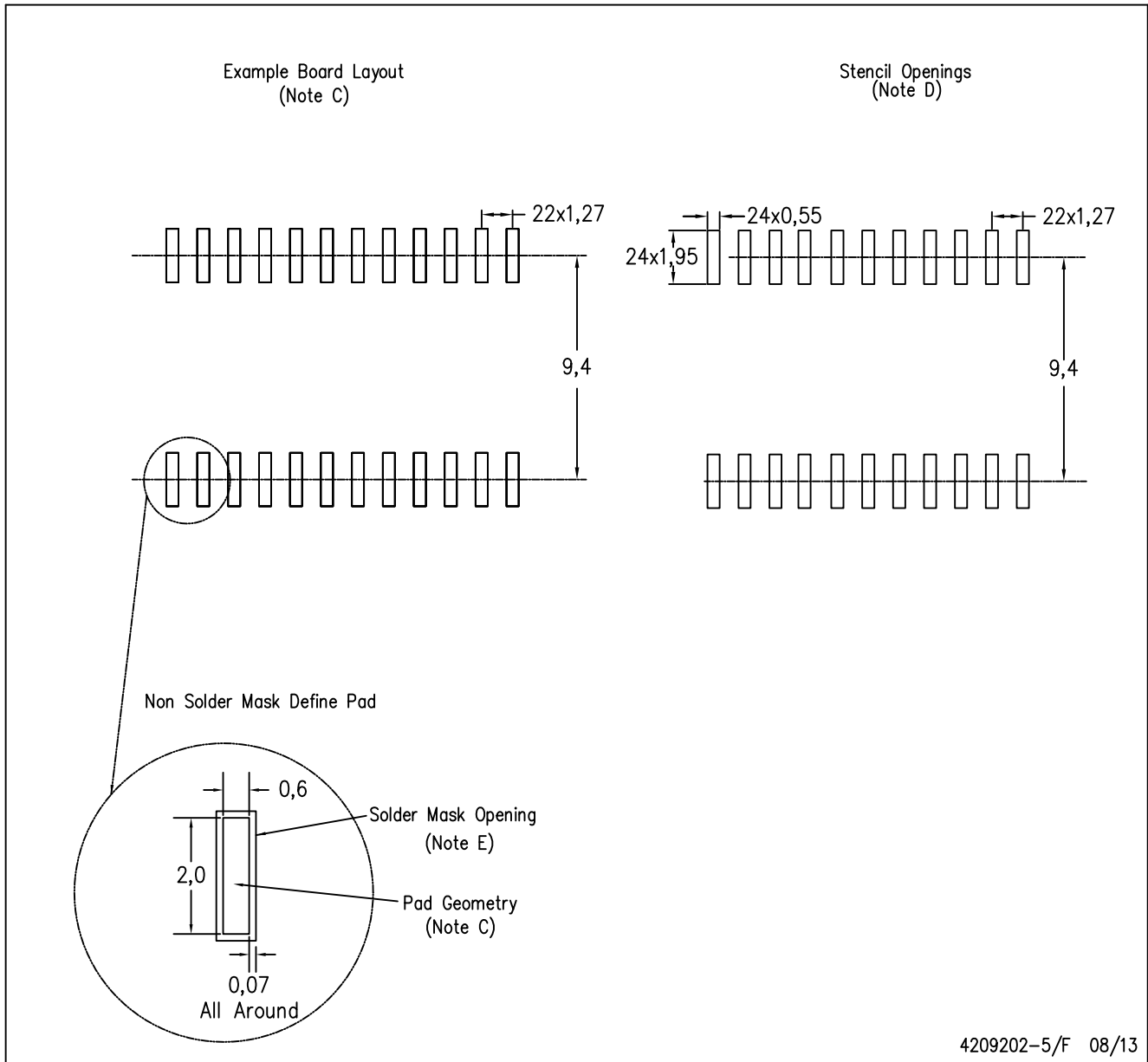
PLASTIC SMALL OUTLINE



- NOTES:
- A. All linear dimensions are in inches (millimeters). Dimensioning and tolerancing per ASME Y14.5M-1994.
 - B. This drawing is subject to change without notice.
 - C. Body dimensions do not include mold flash or protrusion not to exceed 0.006 (0,15).
 - D. Falls within JEDEC MS-013 variation AD.

DW (R-PDSO-G24)

PLASTIC SMALL OUTLINE



- NOTES:
- A. All linear dimensions are in millimeters.
 - B. This drawing is subject to change without notice.
 - C. Refer to IPC7351 for alternate board design.
 - D. Laser cutting apertures with trapezoidal walls and also rounding corners will offer better paste release. Customers should contact their board assembly site for stencil design recommendations. Refer to IPC-7525
 - E. Customers should contact their board fabrication site for solder mask tolerances between and around signal pads.

DB (R-PDSO-G**)

PLASTIC SMALL-OUTLINE

28 PINS SHOWN



- NOTES: A. All linear dimensions are in millimeters.
 B. This drawing is subject to change without notice.
 C. Body dimensions do not include mold flash or protrusion not to exceed 0,15.
 D. Falls within JEDEC MO-150

IMPORTANT NOTICE AND DISCLAIMER

TI PROVIDES TECHNICAL AND RELIABILITY DATA (INCLUDING DATASHEETS), DESIGN RESOURCES (INCLUDING REFERENCE DESIGNS), APPLICATION OR OTHER DESIGN ADVICE, WEB TOOLS, SAFETY INFORMATION, AND OTHER RESOURCES "AS IS" AND WITH ALL FAULTS, AND DISCLAIMS ALL WARRANTIES, EXPRESS AND IMPLIED, INCLUDING WITHOUT LIMITATION ANY IMPLIED WARRANTIES OF MERCHANTABILITY, FITNESS FOR A PARTICULAR PURPOSE OR NON-INFRINGEMENT OF THIRD PARTY INTELLECTUAL PROPERTY RIGHTS.

These resources are intended for skilled developers designing with TI products. You are solely responsible for (1) selecting the appropriate TI products for your application, (2) designing, validating and testing your application, and (3) ensuring your application meets applicable standards, and any other safety, security, regulatory or other requirements.

These resources are subject to change without notice. TI grants you permission to use these resources only for development of an application that uses the TI products described in the resource. Other reproduction and display of these resources is prohibited. No license is granted to any other TI intellectual property right or to any third party intellectual property right. TI disclaims responsibility for, and you fully indemnify TI and its representatives against any claims, damages, costs, losses, and liabilities arising out of your use of these resources.

TI's products are provided subject to [TI's Terms of Sale](#), [TI's General Quality Guidelines](#), or other applicable terms available either on [ti.com](#) or provided in conjunction with such TI products. TI's provision of these resources does not expand or otherwise alter TI's applicable warranties or warranty disclaimers for TI products. Unless TI explicitly designates a product as custom or customer-specified, TI products are standard, catalog, general purpose devices.

TI objects to and rejects any additional or different terms you may propose.

Copyright © 2026, Texas Instruments Incorporated

Last updated 10/2025