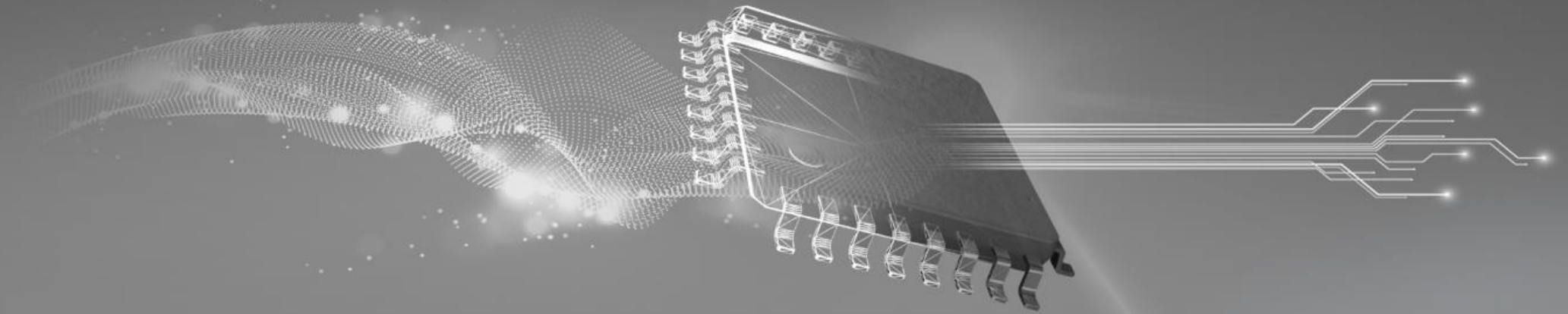


TI TECH DAYS



Overview and demonstration of the new features of Bluetooth 5.0, 5.1 and 5.2

Rafael de Souza

Bluetooth Low Energy software applications team

What is *Bluetooth*® Low Energy?

- Defined by Bluetooth SIG
 - Part of *Bluetooth* after the 4.0 Spec (2010)
 - Uses the same 2.4 GHz band as classic Bluetooth with different modulation, channels, and frequency hopping scheme
- Synchronous Protocol designed for low power
- Target Applications
 - Low Power
 - Low Latency
 - Low Throughput
- Bluetooth 5 comes to improve power consumption, data throughput, range and provides the enabling infrastructure for additional applications

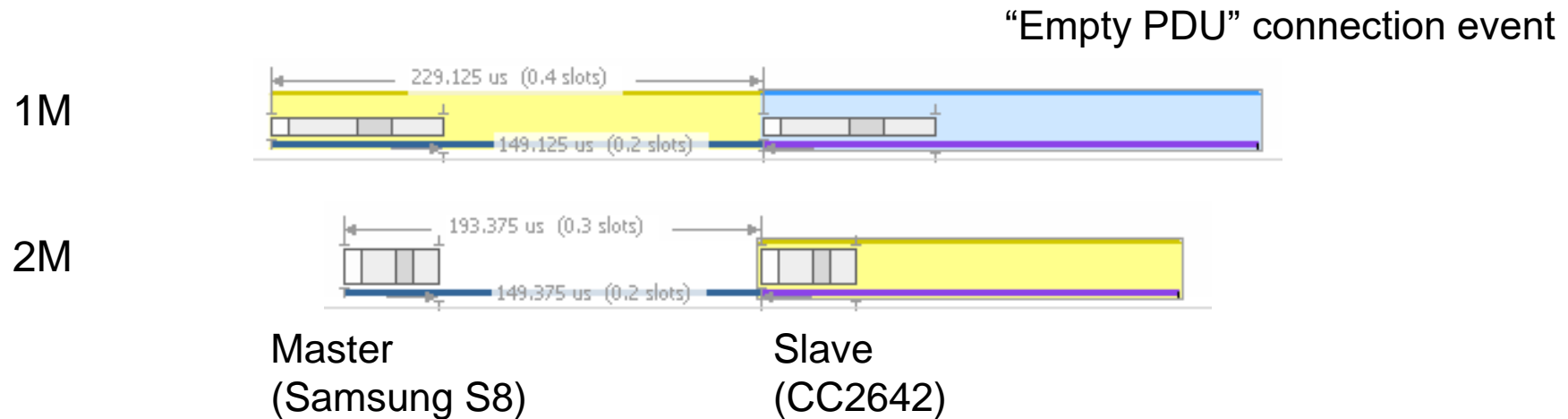


Bluetooth 5.0 Features

- Additional PHY's beyond the original 1M
 - 2M (for increased throughput) and Coded (for increased range)
- Advertising improvements through “Advertising Extension”
 - Increased possibilities for advertisement data configuration that opens various BLE beacon applications
- Improved Frequency Hopping (CSA#2)
 - Hopping sequences are now pseudo random and the distinct sequences which are possible are very large
 - Improves the interference tolerance of the Bluetooth radio
 - Is more effective at avoiding multi-path fading effects than CSA#1
 - Especially for high throughput scenarios

Bluetooth 5.0 Feature: 2M PHY

- Double symbol rate compared to 1M
- Almost half the energy consumption per frame
- Twice as fast? Not quite.
 - Still the same inter-frame spacing of 150 μ s contributing to overhead, but it can use **Data Length extensions**



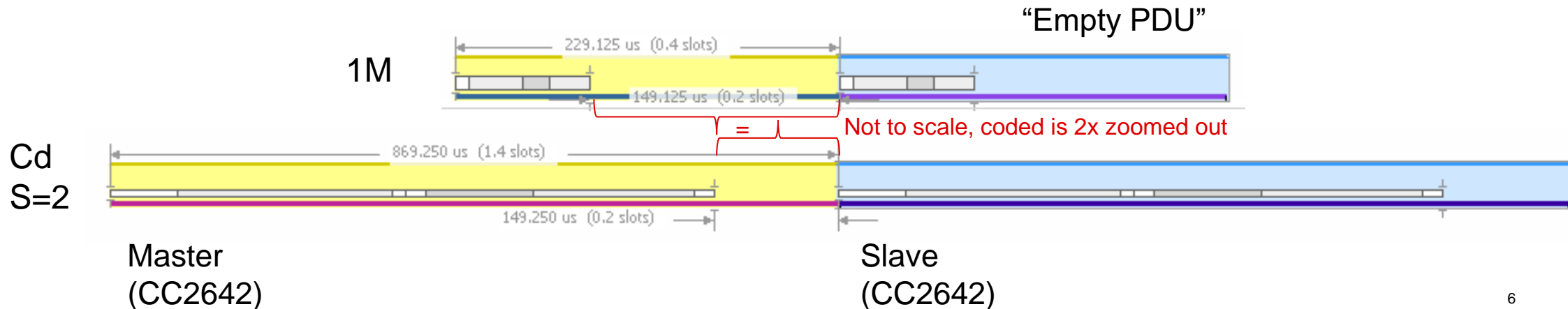
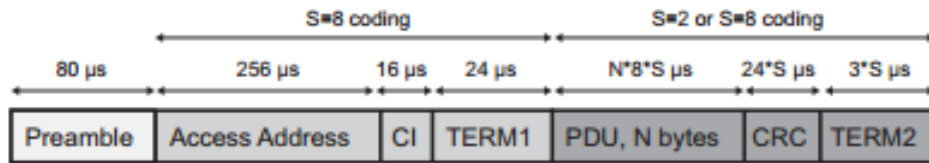
Bluetooth 5.0 Feature: Coded PHY

- Allows for enhanced range
- There are two ways to improve the link budget:
 - Increase the output power
 - Improve (reduce) the receiver sensitivity level
- The receiver sensitivity level is increased two ways:
 - The data rate is reduced.
 - Forward Error Correction (FEC), correlators in the radio search for known symbol sequences in the received symbols.

Bluetooth 5.0 Feature: Coded PHY

Coded PHYs:

- 500kbps (S=2) – Use two symbols per bit, with forward error correction
- 125kbps (S=8) – Use eight symbols per bit, cleverly repeats the S=2 symbols



Bluetooth 5.0 Feature: PHY Comparison

Parameter	LE 1M	LE 2M	LE Coded S=2	LE Coded S=8
Symbol Rate	1Msps	2Msps	1Msps	1Msps
Data Rate	1Mbps	2Mbps	500kbps	125kbps
Error Correction	None	None	FEC*	FEC*
Range Multiplier	1	~0.8	~2	~4

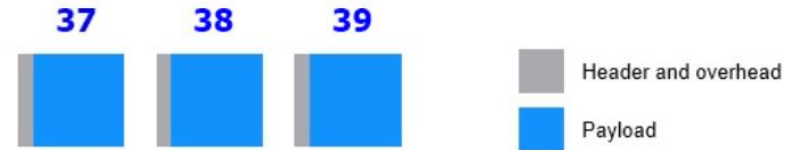
* Forward Error Correction: the error correction mechanism used to improve the sensitivity of the receiver

<https://www.bluetooth.com/blog/exploring-bluetooth-5-going-the-distance/>

Bluetooth 5.0 Feature: Advertising Extension

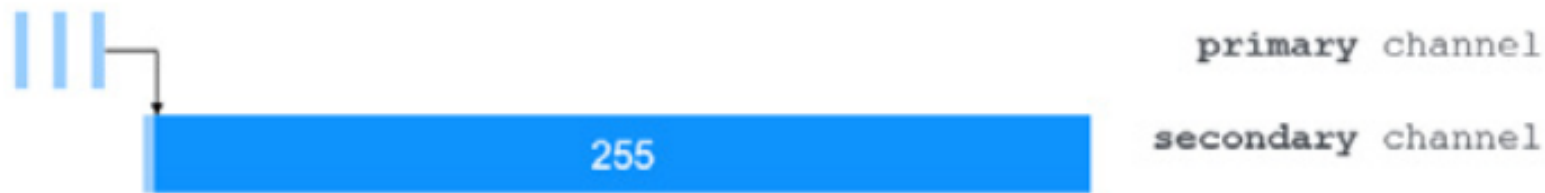
Legacy advertising

- Maximum broadcast data size of 27 bytes
- Only 3 channels are used for advertising



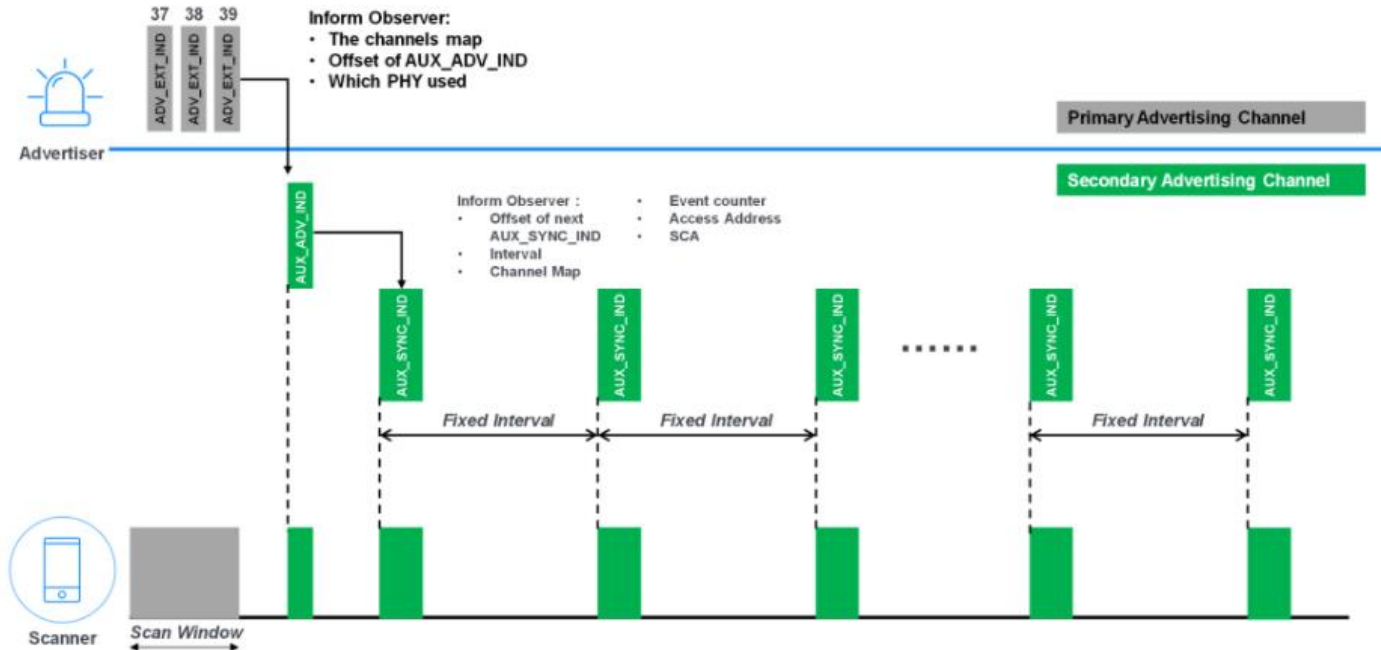
Advertising extensions

- Maximum broadcast data size of 255 bytes
- Utilizes all possible Bluetooth channels to send data
- Accomplished via a primary / secondary channel pointer mechanism



Bluetooth 5.0 Feature: Periodic Advertising

- Normal advertising includes a random jitter to prevent persistent packet collisions
- Bluetooth 5 introduces “Periodic Advertising”
 - allows scanners to synchronize their scanning for packets with the schedule of the advertising device to perform deterministic advertising



Bluetooth 5.1 Features

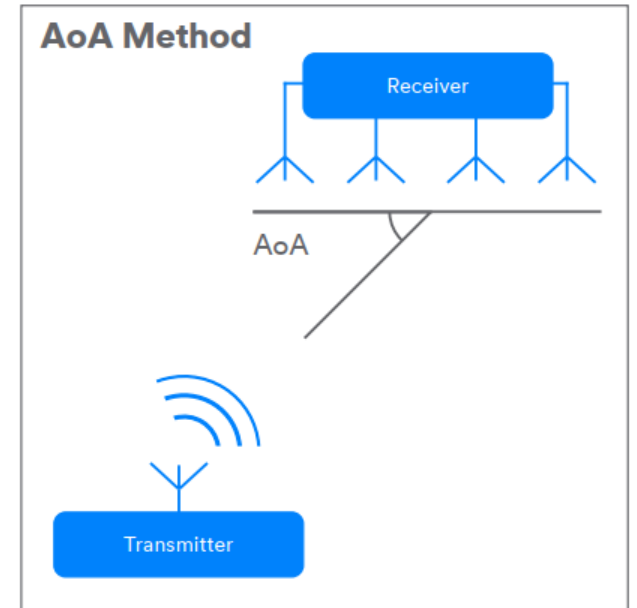
- Direction Finding
 - Previous proximity / positioning solutions relied on RSSI
 - BT 5.1 adds Angle of Arrival (AoA) and Angle of Departure (AoD)
- GATT Caching
 - Simplifies service discovery to save power
- Advertising Enhancements
 - Randomized Advertising Channel Indexing
 - Periodic Advertising Sync Transfer

Bluetooth 5.1 Feature: Angle of Arrival (AoA)

- A constant tone extension (CTE) is appended to the transmitter packet
 - provides constant frequency and wavelength signal material

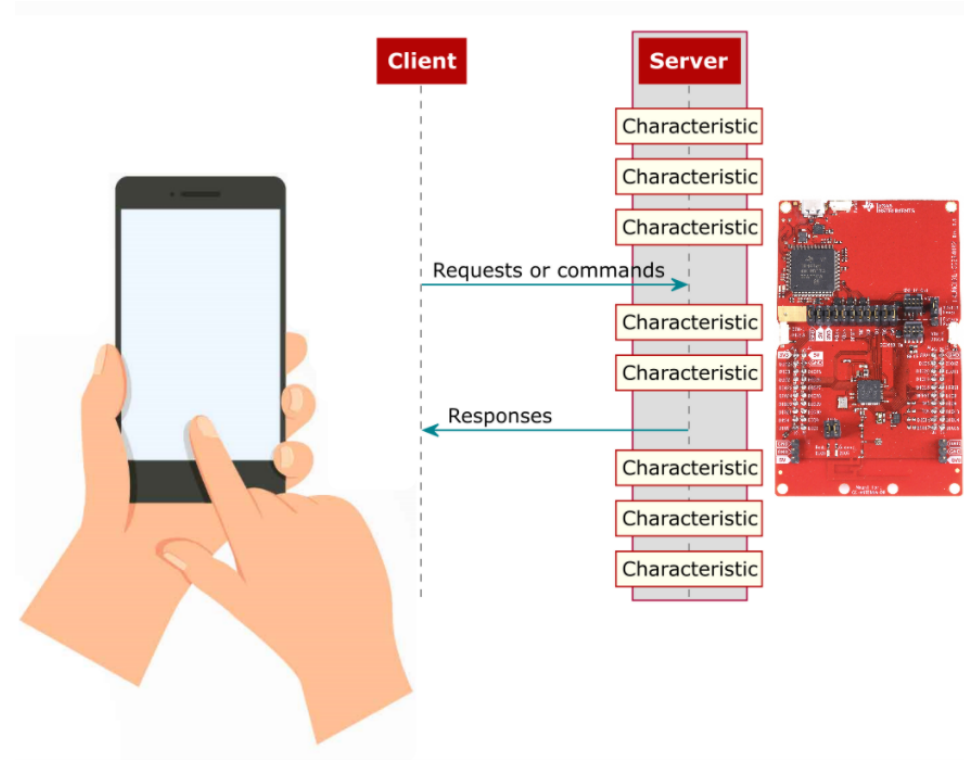


- Antenna switching used to find angle
 - The receiving device contains an antenna array
 - Switching between antennas allows In-Phase and Quadrature (IQ) sampling to measure the phase of radio waves incident upon an antenna at a specific time



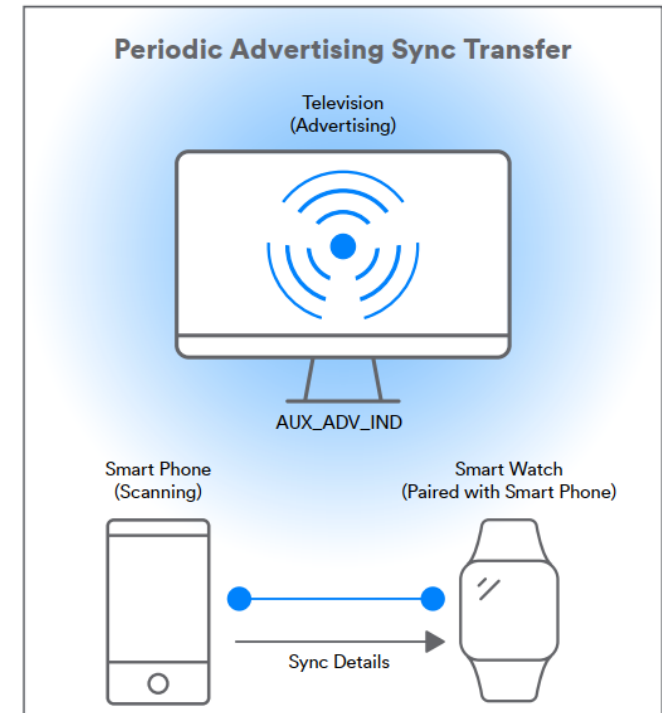
Bluetooth 5.1 feature: GATT caching

- Bluetooth Low Energy devices use the Generic Attribute Profile (GATT) to discover and send data
 - Client must discover all attributes upon connecting which consumes power
- Bluetooth 5.1 allows the client to cache this attribute table after the first discovery
 - Avoids rediscovery on subsequent connections



Bluetooth 5.1 Feature: Advertising Enhancements

- Randomized Advertising Channel Indexing
 - Previously the sequence of primary advertising channels was always 37, 38, 39
 - Bluetooth 5.1 allows for this sequence to be randomized to decrease packet collisions
- Periodic Advertising Sync Transfer
 - Periodic advertising synchronization can be a relatively processing-expensive operation
 - Bluetooth 5.1 allows simple end devices the possibility to offload some of this complexity to a second device
 - Primarily build to enable LE Audio in Bluetooth Low Energy 5.2



Bluetooth 5.2 Features

- Enhanced Attribute Protocol (EATT)
- LE Power Control
- LE Isochronous Channels

Bluetooth 5.2 Enhanced Attribute Protocol (EATT)

- Improved version of the Attribute protocol (ATT)
- Supports concurrent transactions
- Allows interleaving of L2CAP packets relating to ATT packets from different applications
- Allows ATT MTU to be changed during a connection

Bluetooth 5.2 LE Power Control

What is it?

- Possible to dynamically optimize the transmission power used in communication between connected devices
- BLE receivers can now monitor signal strength and request transmission power level changes

Benefits

- Helps the reduction of overall power consumption by transmitters through dynamic power management on connections
- Improved reliability through active maintenance of receiver signal strength
- Improvements to coexistence with other wireless devices

Bluetooth 5.2 LE Isochronous Channels

- Primarily designed to support LE Audio
- Allows the communication of time-bound data to one or more devices for time synchronized processing
- Primarily targeted towards hearing aids and assisted hearing systems in diverse locations such as theaters, conferences, lecture halls, etc.

Bluetooth Low Energy 5 Resources

- TI Bluetooth 5 overview page:
 - <https://www.ti.com/wireless-connectivity/bluetooth/overview/bluetooth-5.html>
- Connect Videos at training.ti.com
 - [Connect: What's new with Bluetooth® 5.0?](#)
- TI Developer's Portal (<https://dev.ti.com>)
 - [SimpleLink™ Academy training modules](#)
 - Bluetooth Low Energy 5 Stack Quick Start Guide and comprehensive User's Guide
- At Bluetooth.org
 - [Bluetooth 5.0 Feature Overview](#)
 - [Bluetooth 5.1 Feature Overview](#)
 - [Bluetooth 5.2 Feature Overview](#)



©2020 Texas Instruments Incorporated. All rights reserved.

The material is provided strictly "as-is" for informational purposes only and without any warranty.
Use of this material is subject to TI's **Terms of Use**, viewable at [TI.com](https://www.ti.com)

IMPORTANT NOTICE AND DISCLAIMER

TI PROVIDES TECHNICAL AND RELIABILITY DATA (INCLUDING DATASHEETS), DESIGN RESOURCES (INCLUDING REFERENCE DESIGNS), APPLICATION OR OTHER DESIGN ADVICE, WEB TOOLS, SAFETY INFORMATION, AND OTHER RESOURCES "AS IS" AND WITH ALL FAULTS, AND DISCLAIMS ALL WARRANTIES, EXPRESS AND IMPLIED, INCLUDING WITHOUT LIMITATION ANY IMPLIED WARRANTIES OF MERCHANTABILITY, FITNESS FOR A PARTICULAR PURPOSE OR NON-INFRINGEMENT OF THIRD PARTY INTELLECTUAL PROPERTY RIGHTS.

These resources are intended for skilled developers designing with TI products. You are solely responsible for (1) selecting the appropriate TI products for your application, (2) designing, validating and testing your application, and (3) ensuring your application meets applicable standards, and any other safety, security, or other requirements. These resources are subject to change without notice. TI grants you permission to use these resources only for development of an application that uses the TI products described in the resource. Other reproduction and display of these resources is prohibited. No license is granted to any other TI intellectual property right or to any third party intellectual property right. TI disclaims responsibility for, and you will fully indemnify TI and its representatives against, any claims, damages, costs, losses, and liabilities arising out of your use of these resources.

TI's products are provided subject to TI's Terms of Sale (www.ti.com/legal/termsofsale.html) or other applicable terms available either on ti.com or provided in conjunction with such TI products. TI's provision of these resources does not expand or otherwise alter TI's applicable warranties or warranty disclaimers for TI products.

Mailing Address: Texas Instruments, Post Office Box 655303, Dallas, Texas 75265
Copyright © 2020, Texas Instruments Incorporated