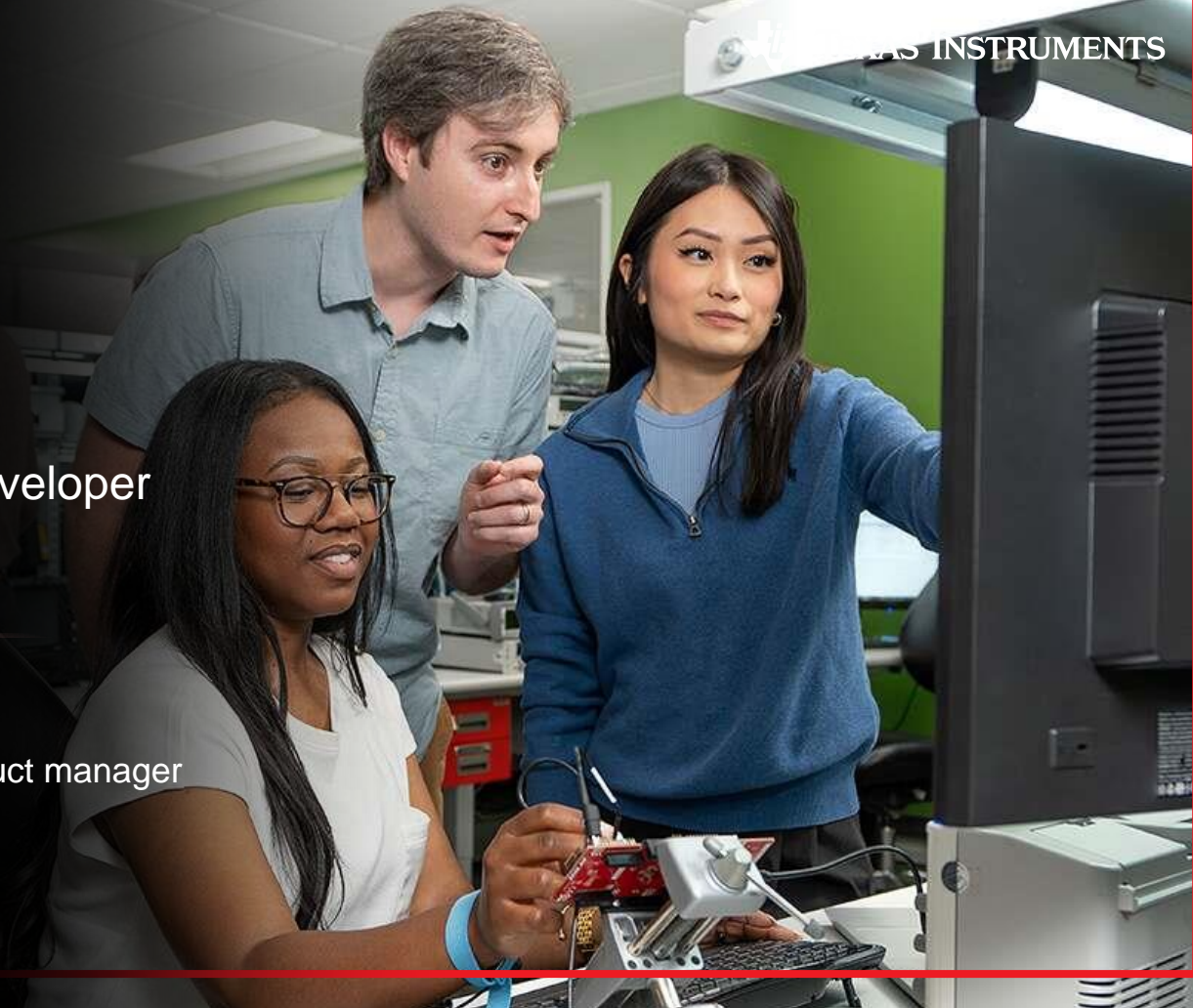


Webinar

Easily start embedded
development in the TI Developer
Zone

John Stevenson

Software development tools product manager

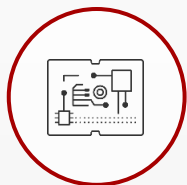


Fastest path to embedded development



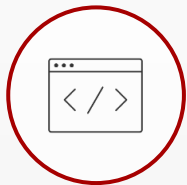
TI Developer Zone

Access everything you need to evaluate, prototype and develop



Software

Wide selection of proven, royalty-free and validated software



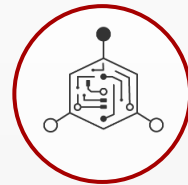
Hardware

100s of hardware kits and reference designs



Educational resources

Extensive library of hands-on technical academies, training videos and articles



Partners

Connect with a wide ecosystem of TI partner companies to aid in development



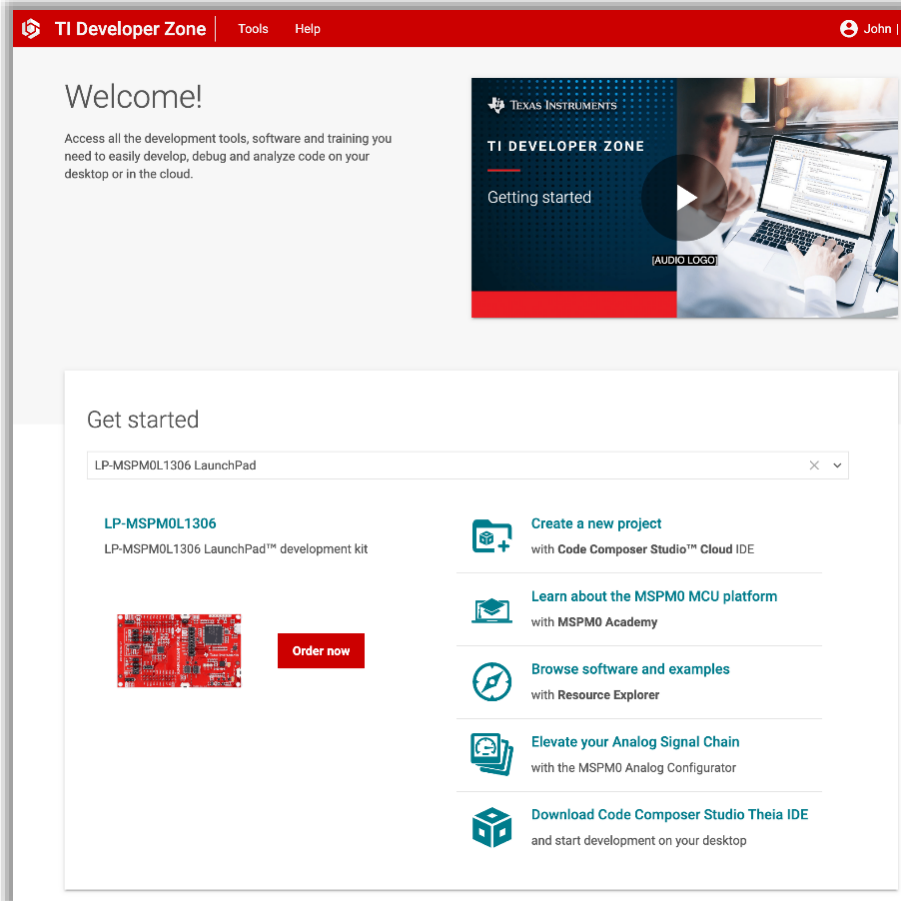
Online support

Get help expert help with the E2E™ design support forums

TI Developer Zone

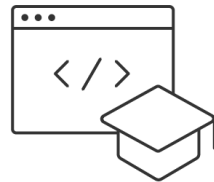
What is TI Developer Zone

- Online development environment for TI's embedded portfolio:
 - Microcontrollers
 - Processors
 - Wireless connectivity devices
 - Radar sensors
- Home to software, tools and trainings for every step of development

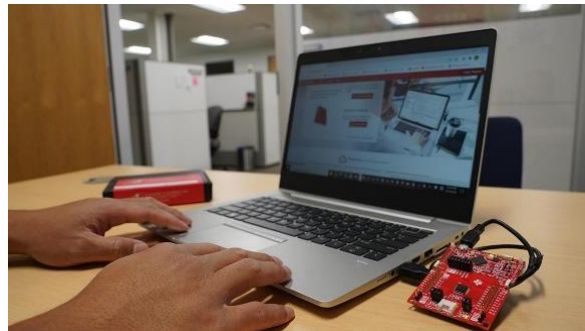


Why use the TI Developer Zone?

**Everything needed for
development in one place**



**Ability to detect your device or
board**



**Start working on your desktop or
in the cloud**

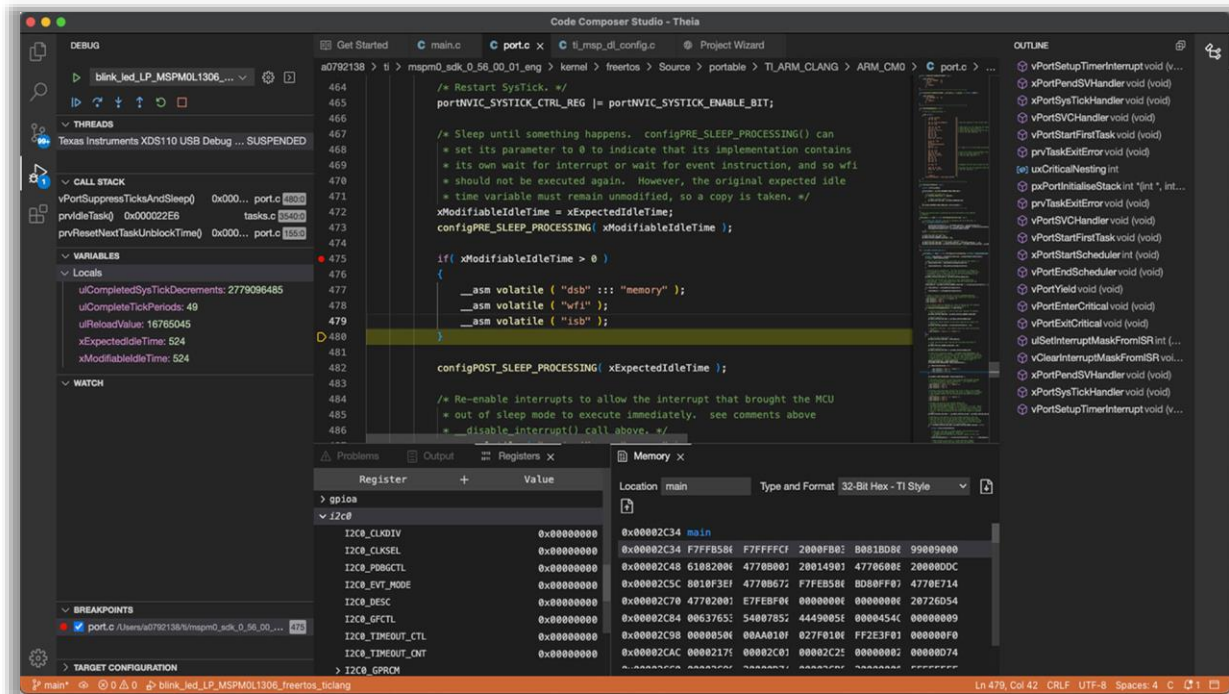


Code Composer Studio™ Cloud IDE

Edit, build and debug embedded applications

Benefits

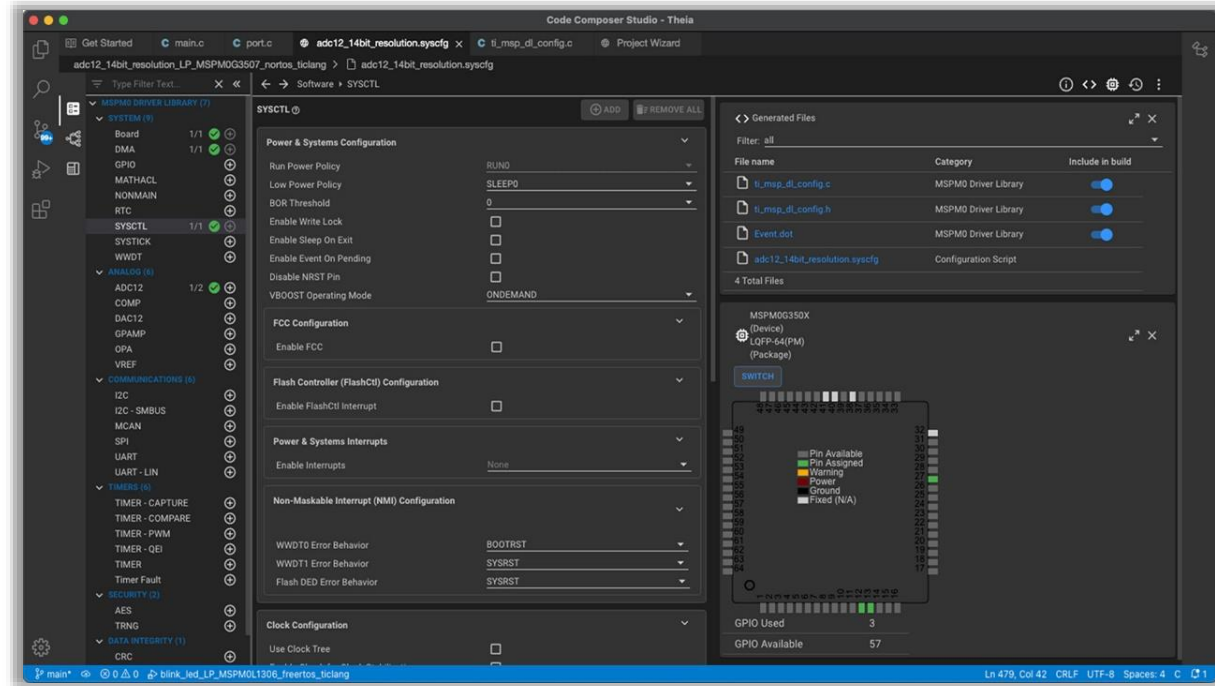
- Simple user interface
- Feature-rich
- Access from anywhere



SysConfig | System configuration tool

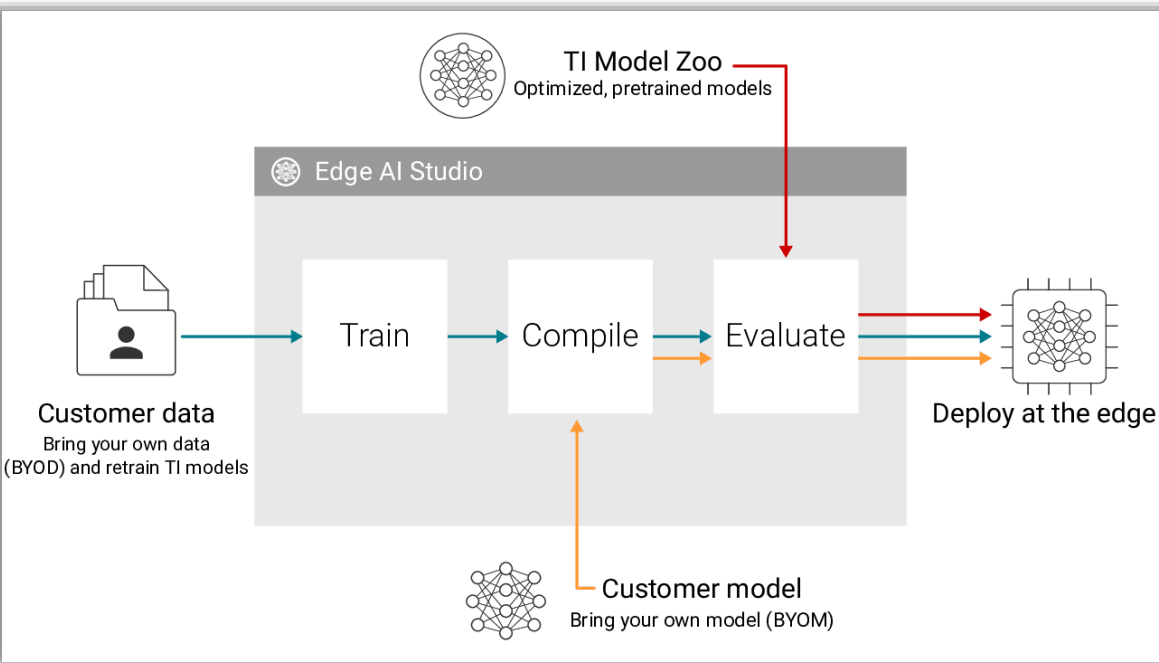
Features & benefits

- Automatically detect and resolve resource conflicts
- Simplify hardware and software configuration



Edge AI Studio

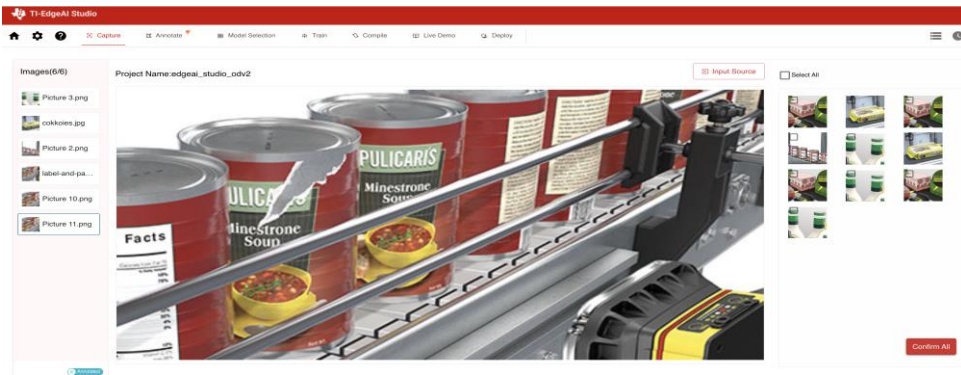
Collect and annotate data, and train and compile modules for deployment on edge devices



Features & benefits

- Hundreds of optimized pre-trained models
- Ability to use a custom model
- Obtain data on latency, frames per second processing, DDR bandwidth, and accuracy benchmarks

Model composer | Edge AI Studio

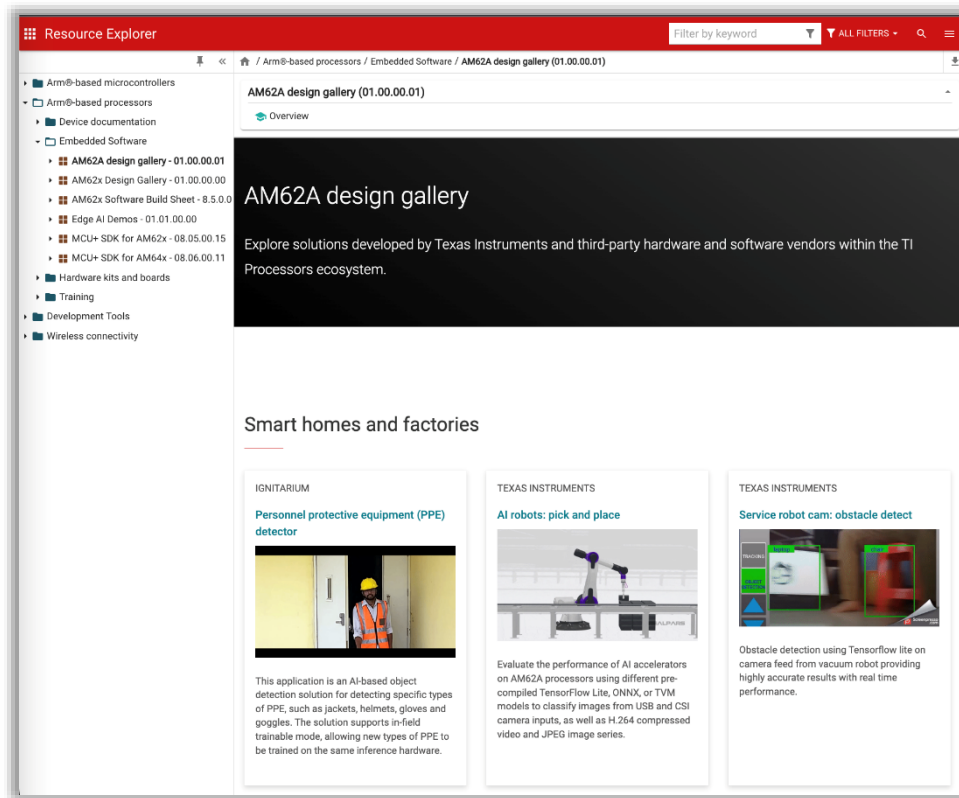


- Quick, Easy, End-to-End AI development environment in the cloud
- Transfer learning on state-of-the-art deep learning models like YOLO-X
- Targeted for Industrial applications: Machine vision, factory / warehouse automation, agriculture, ...

Find a wealth of content in Resource Explorer

20 software
development
kits

10,000 example
projects



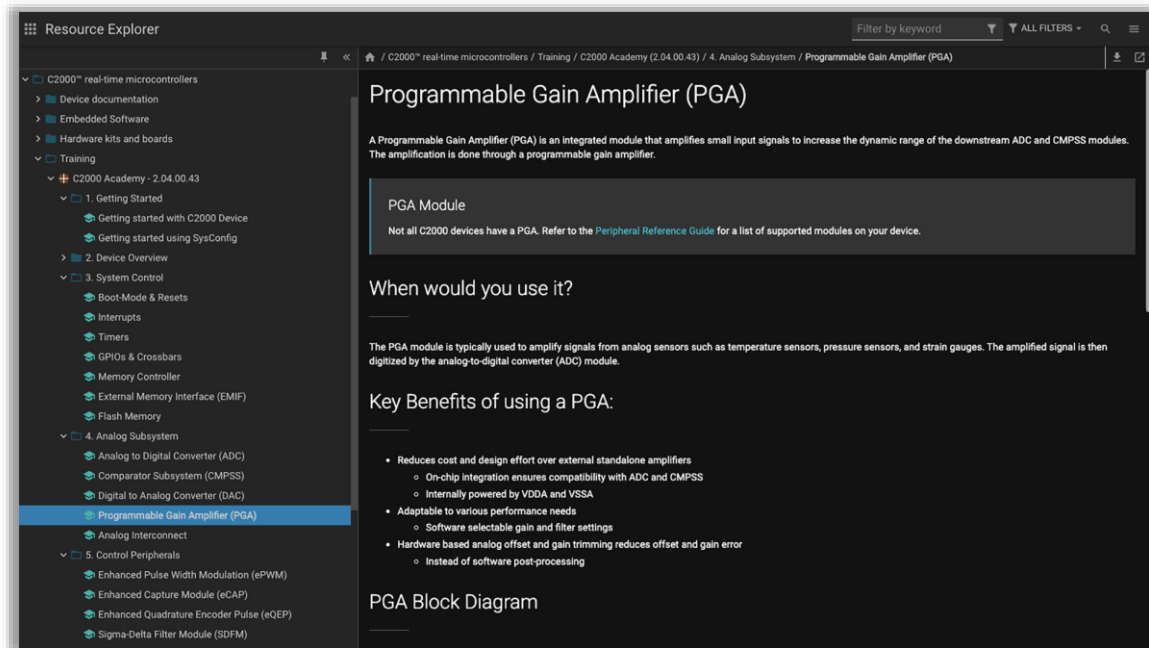
Academies

Get up to speed with a product family

800 training
modules

Getting started
through advanced
topics

Hands-on labs



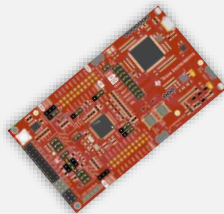
MSPM0 software and tools ecosystem | Demo

Rapidly develop with low-cost MSPM0 microcontrollers



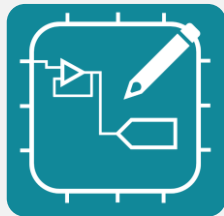
MSPM0 SDK

Software, tools, and documentation to accelerate product development



MSPM0 LaunchPad

An unconstrained prototyping platform



SysConfig & Analog Configurator

Intuitive graphical configuration and code generation



CCS Theia

A modern, high performance integrated development environment



© Copyright 2023 Texas Instruments Incorporated. All rights reserved.

This material is provided strictly “as-is,” for informational purposes only, and without any warranty.
Use of this material is subject to TI’s **Terms of Use**, viewable at [TI.com](https://www.ti.com)

IMPORTANT NOTICE AND DISCLAIMER

TI PROVIDES TECHNICAL AND RELIABILITY DATA (INCLUDING DATA SHEETS), DESIGN RESOURCES (INCLUDING REFERENCE DESIGNS), APPLICATION OR OTHER DESIGN ADVICE, WEB TOOLS, SAFETY INFORMATION, AND OTHER RESOURCES "AS IS" AND WITH ALL FAULTS, AND DISCLAIMS ALL WARRANTIES, EXPRESS AND IMPLIED, INCLUDING WITHOUT LIMITATION ANY IMPLIED WARRANTIES OF MERCHANTABILITY, FITNESS FOR A PARTICULAR PURPOSE OR NON-INFRINGEMENT OF THIRD PARTY INTELLECTUAL PROPERTY RIGHTS.

These resources are intended for skilled developers designing with TI products. You are solely responsible for (1) selecting the appropriate TI products for your application, (2) designing, validating and testing your application, and (3) ensuring your application meets applicable standards, and any other safety, security, regulatory or other requirements.

These resources are subject to change without notice. TI grants you permission to use these resources only for development of an application that uses the TI products described in the resource. Other reproduction and display of these resources is prohibited. No license is granted to any other TI intellectual property right or to any third party intellectual property right. TI disclaims responsibility for, and you will fully indemnify TI and its representatives against, any claims, damages, costs, losses, and liabilities arising out of your use of these resources.

TI's products are provided subject to [TI's Terms of Sale](#) or other applicable terms available either on [ti.com](https://www.ti.com) or provided in conjunction with such TI products. TI's provision of these resources does not expand or otherwise alter TI's applicable warranties or warranty disclaimers for TI products.

TI objects to and rejects any additional or different terms you may have proposed.

Mailing Address: Texas Instruments, Post Office Box 655303, Dallas, Texas 75265
Copyright © 2023, Texas Instruments Incorporated