

Stepper RDK README FIRST

Stellaris® Stepper Motor Control RDK

Stellaris Reference Design Kits (RDKs) from Texas Instruments accelerate product development by providing ready-to-run hardware, a typical motor and comprehensive documentation including hardware design files. Using the Stepper Motor RDK, designers without prior motor control experience can successfully implement a sophisticated motor control system.

Installing and Using the Stepper Motor Control RDK

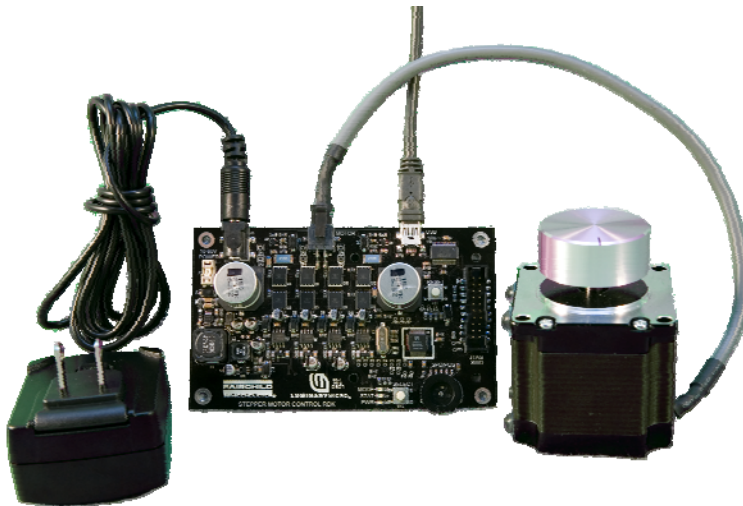
Kit Contents

The RDK includes the following items:

- Stepper Motor Control Board
- Stepper Motor NEMA23 (166 oz-in with 12-inch cable)
- Wall Adapter 24V_{dc} 15W with plug adapters for US, UK, EU, and AUST.
- USB Cable Mini-B to USB-A (3ft)
- CD containing User's Manual, RDK GUI, source code, and datasheet
- This Quickstart Guide

Step 1: Running the Motor

Follow these steps to start running the motor using the on-board speed/position knob and button.



1. Connect the Stepper motor power cable to the control board. The four-position plug should be inserted in the socket labeled MOTOR on the control board. The connector is keyed and cannot be inserted incorrectly.

Stepper RDK README FIRST

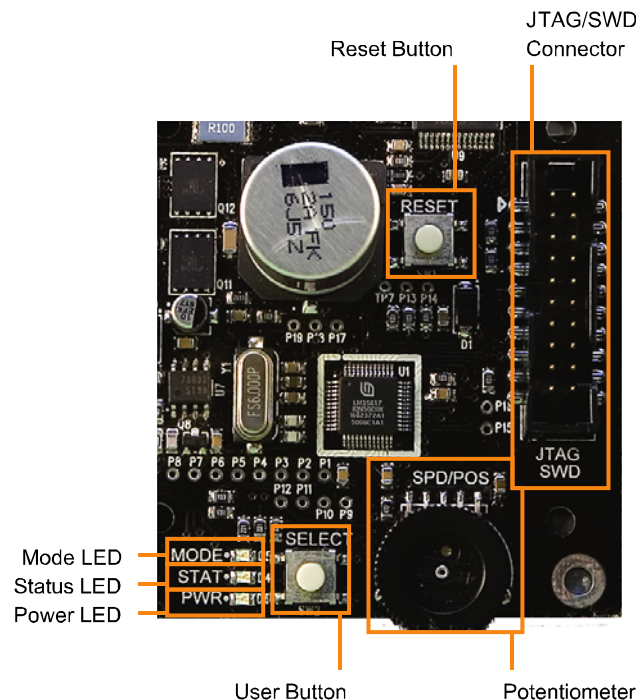
2. Apply power by selecting the appropriate plug adapter (the RDK includes plugs for most countries) and slide it into the wall adapter. If necessary, the adapter can be removed by pressing the release latch.
3. Plug the DC plug into the socket labeled POWER on the control board.
4. Connect the wall adapter to a standard AC electrical outlet (115 or 230 V). The green power LED (PWR) illuminates.

Controlling the Motor Using Speed Mode

1. Press and release the SELECT button to start, stop, and change motor direction.
2. Use the Speed/Position potentiometer to adjust motor speed between 10 steps/second and 1000 steps/second.

Controlling the Motor Using Position Mode

1. To change mode, press and hold the Select button for 5 seconds until the Mode LED flashes twice.
2. Rotate the Speed/Position potentiometer and the motor will follow its position.
3. To return to Speed mode, press and hold the Select button for 5 seconds until the Mode LED flashes once.



Stepper RDK README FIRST

Installing and Using the RDK GUI Software

Using the RDK GUI provides a greater level of control than the on-board interface. Through the RDK GUI, you can set specific values for speed, acceleration, and deceleration, as well as a number of other parameters to tune the operation of the motor. The RDK GUI program communicates with the RDK board using a virtual serial port over a USB cable.

Features

- Real-time display of control board parameters
- Control motor speed and direction
- Configure over a dozen parameters to customize operation for specific applications
- Requires a PC, with a USB interface, running Microsoft® Windows 98, 2000, XP, Vista or 2003

Step 1: Insert CD

1. Insert the RDK Documentation and Software CD into the CD-ROM drive of your computer. If Autoplay is enabled on your PC, the index.htm file automatically opens in your default web browser. If not, use Windows Explorer or other browser to open the index.htm file manually.
2. From the CD menu, select the Software button to open a page from which you will be able to download the GUI software and RDK firmware.

To install the GUI software and RDK firmware, you will perform the following steps:

- Install the USB serial and virtual COM port drivers
- Install the GUI software
- Review documentation and other tools on the CD
- Install the firmware development package (optional, not required to run the motor or GUI out of the box)

Step 2: Install the USB serial and virtual COM port drivers

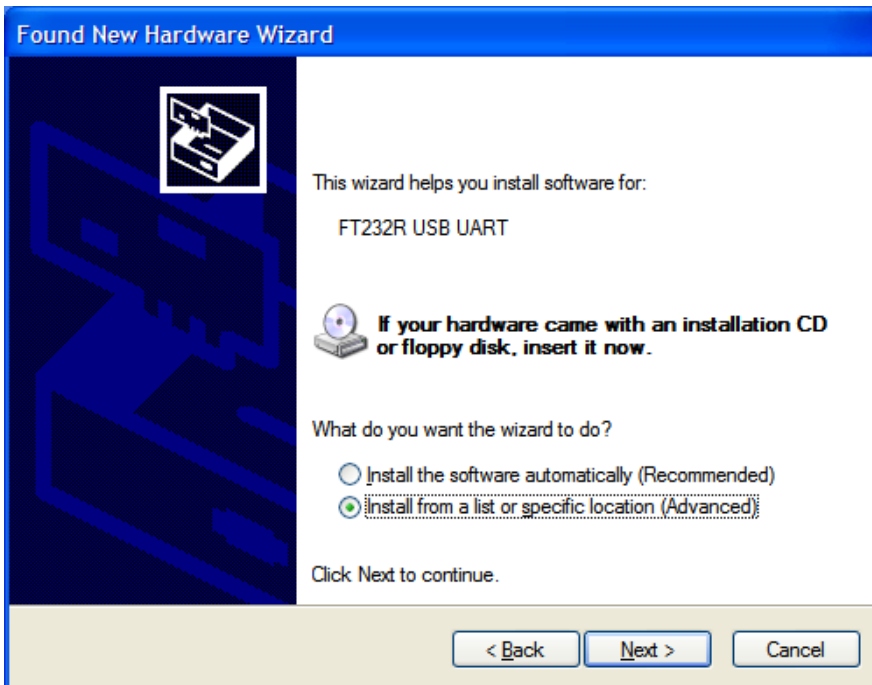
You must install the USB driver software before you can use the GUI. This includes the drivers for the two parts of the included composite USB device, which are the USB serial converter and the Virtual COM port. To do this:

1. Connect the mini-b (smaller) end of the USB cable to the connector labeled USB on the RDK
2. Connect the other end (Type A) to a free USB port on your host computer.
3. When you plug in the EVB for the first time, Windows starts the Found New Hardware Wizard and asks if Windows can connect to Windows Update to search for software.
4. Select **No, not this time** and then click “Next.”

Stepper RDK README FIRST

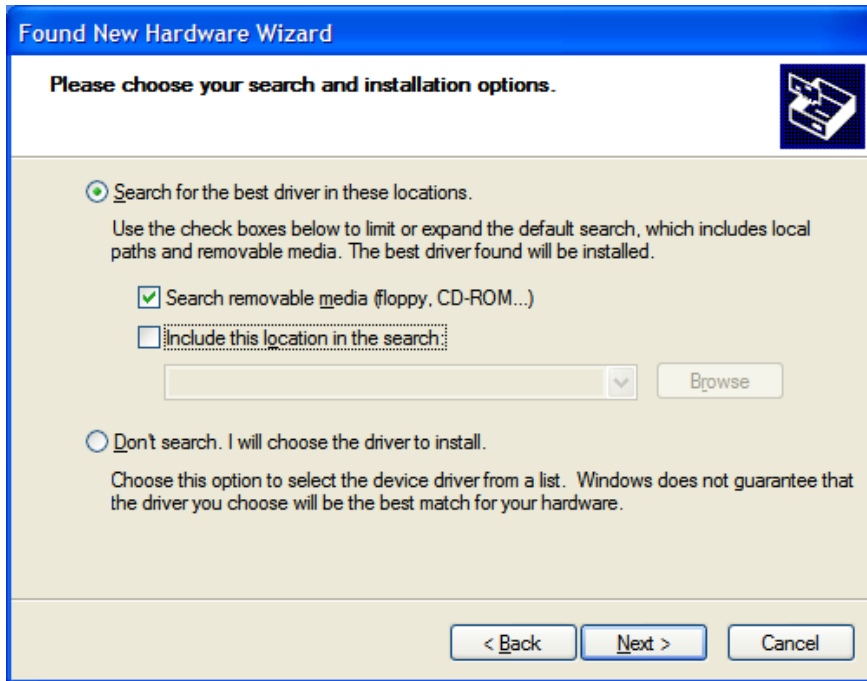


5. Select **Install from a list or specific location** and click **Next**. If needed, insert the documentation and software CD into the CD-ROM drive.

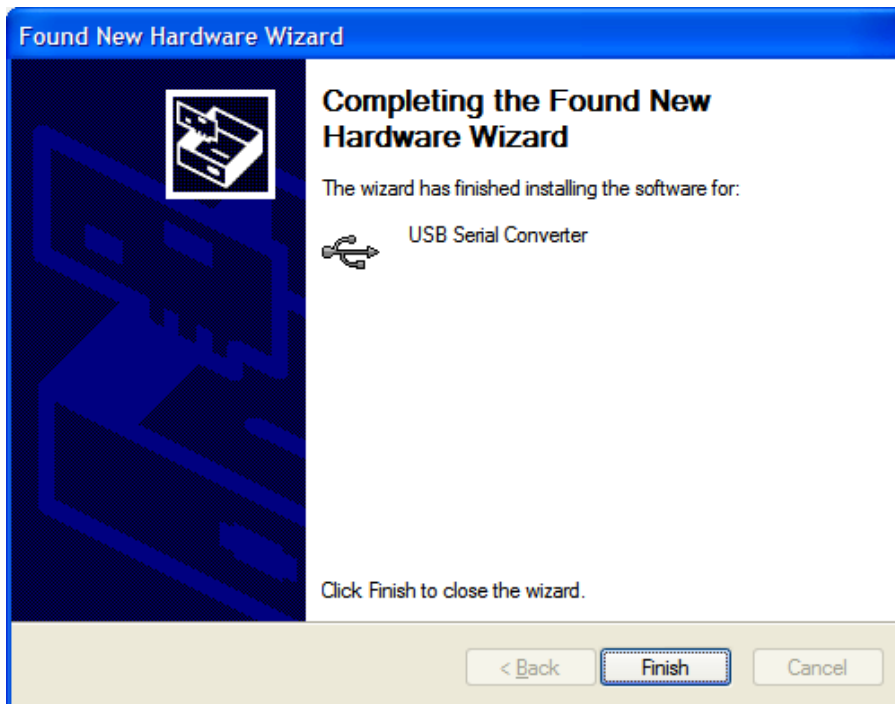


6. Select **Search for the best driver in these locations** and **Search removable media**. Click **Next**.

Stepper RDK README FIRST



7. Windows finishes installing the drivers for the “USB Serial Converter” and the Found New Hardware wizard reports the completion of the process.



8. Click “Finish.” The dialog box closes.
9. The Found New Hardware Wizard reopens for installation of the next driver.

Stepper RDK README FIRST

10. Repeat these steps to install the driver for the virtual COM port.

Installation of all drivers required for the Stepper RDK is now complete.

Step 3: Install the GUI software

1. Click the [RDK-Stepper GUI Software](#) link. Your web browser prompts you to save a zip archive containing the GUI software to your PC. Once downloaded, extract the contents of this file to a convenient location (for example, your Desktop).
2. Within the extracted SW-RDK-Stepper-gui-`nnn` directory, double-click `setup.exe`. Installation of the GUI software begins.
3. The first screen of the installer allows you to select the installation path for the target application and Run-Time Engine. If you are satisfied with the default location, click "Next".
4. After selecting the installation location, the installer assumes you accept the license agreement and continues. When the installer completes, complete the installation by clicking "Finish."

Step 4: Review documentation and other tools on the CD

On the Software page of the CD, you will find links to the user's guides for the RDK-Stepper Firmware Development Package, the StellarisWare® Peripheral Driver Library, and the boot loader. You will also find a link for installing the LM Flash Programmer tool. There is also a link for the FTDI USB driver in case you need to reinstall it on your system (it should have been installed in Step 2).

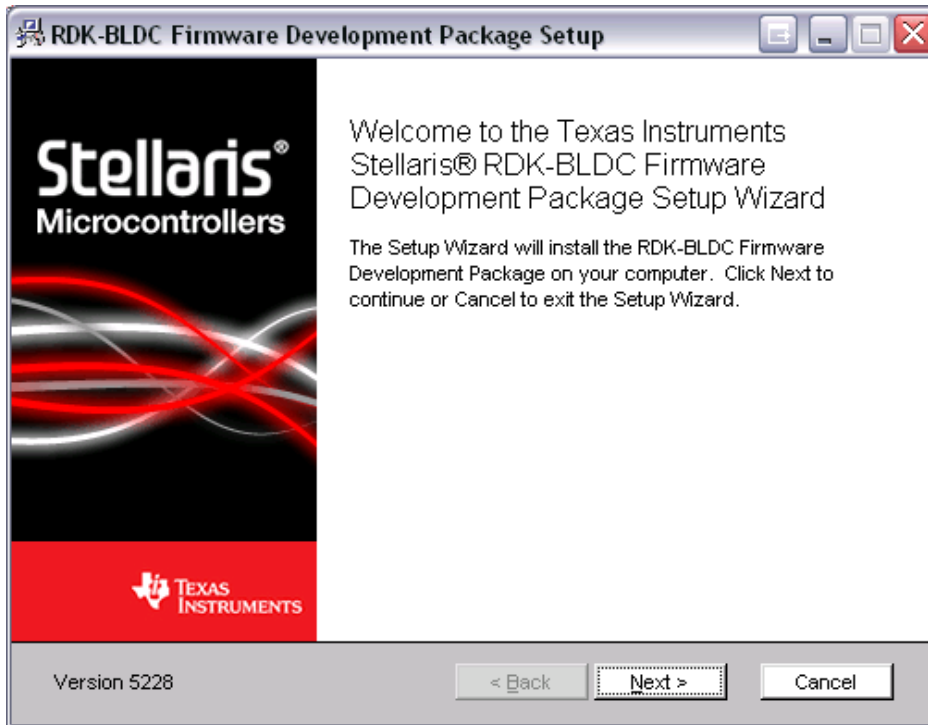
On the Documentation page of the CD, you will find detailed documentation for the RDK board, including a board user's manual, schematics, and other design files. There are also data sheets for the Stellaris microcontroller and other devices used in the RDK design. You will also find documentation for the ARM® Cortex™-M3.

Optional Step: Install the firmware development package

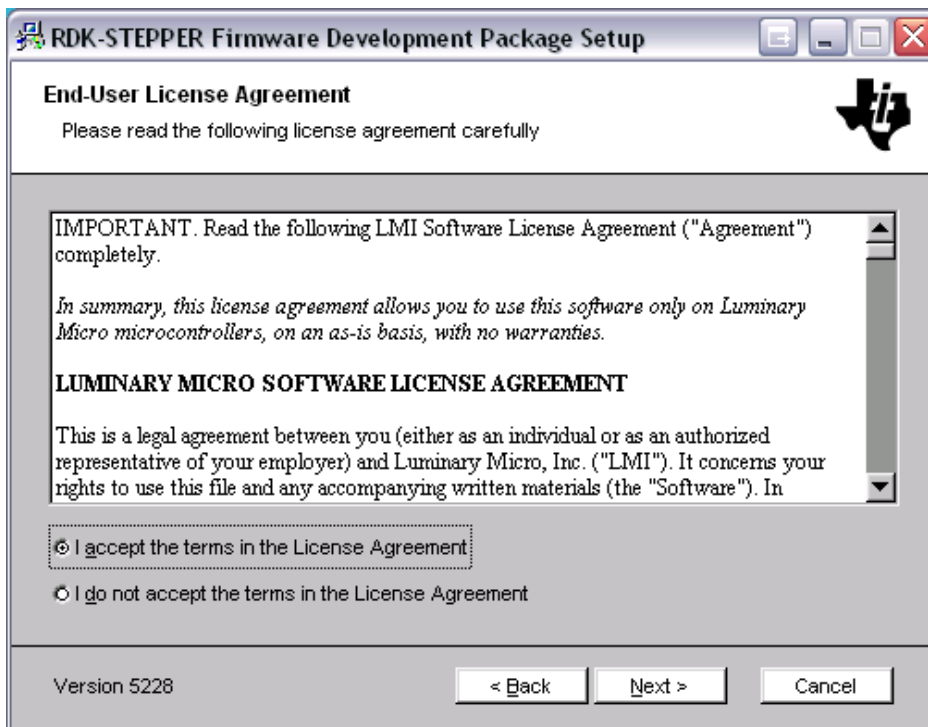
Installing the firmware development package is not required to run the motor or the GUI out of the box.

1. Click the "Install" link next to "StellarisWare RDK-Stepper Firmware Development Package". Your web browser prompts you to save an executable file containing the Firmware Development Package to your PC.
2. Find the location where the SW-RDK-Stepper-`nnnn.exe` file was saved (for example, your Desktop), and double-click the file name. The installer should run and show you the opening screen. Click the Next button.

Stepper RDK README FIRST

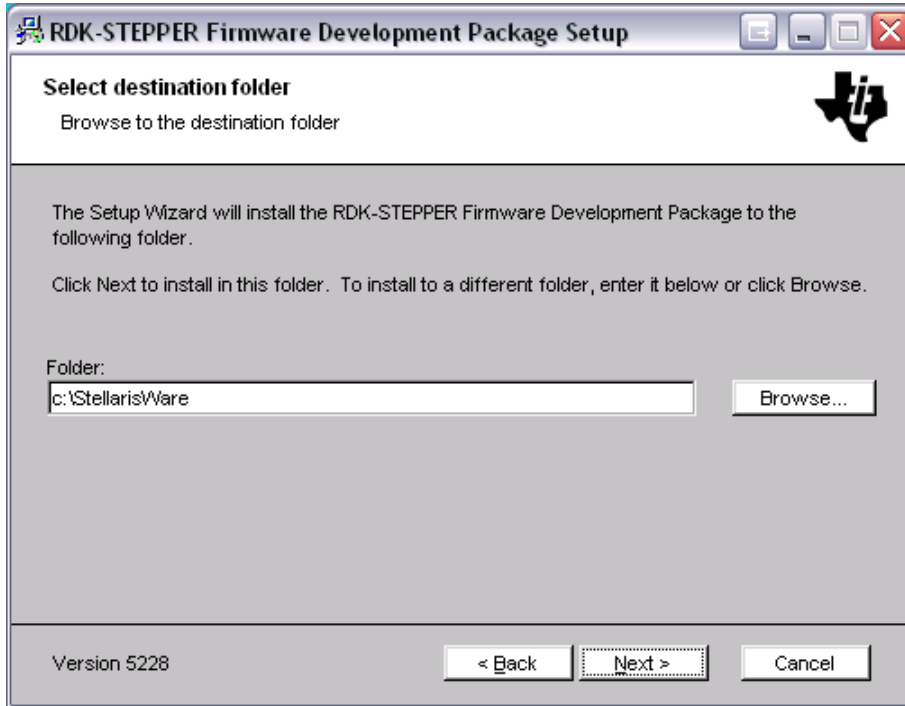


3. Read the license agreement. Select the button that says "I accept ..." and then click the Next button.

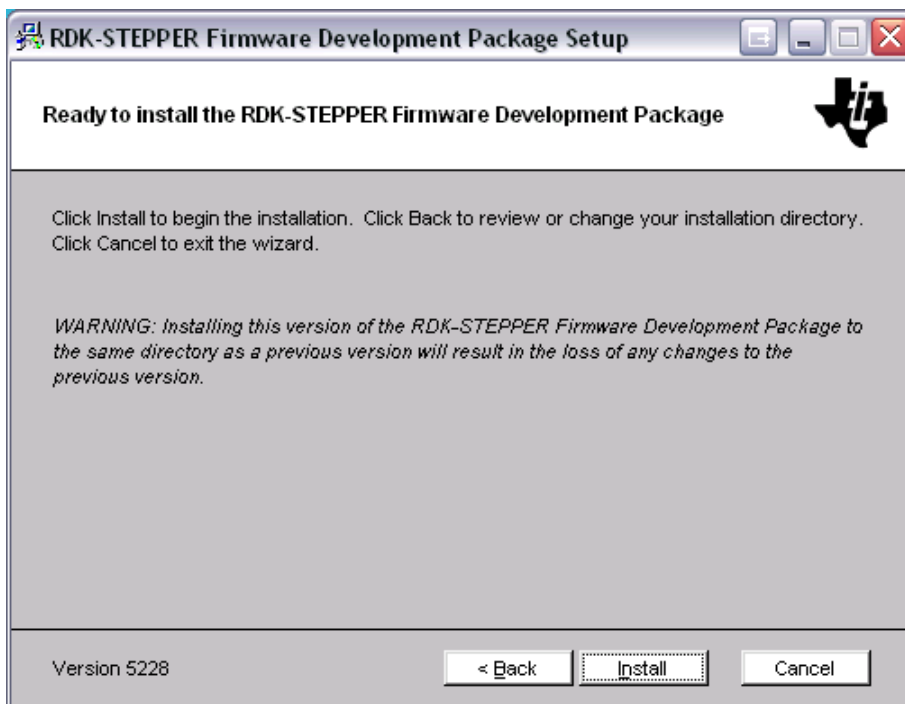


Stepper RDK README FIRST

- The installation path for the RDK firmware package displays. You can use the suggested path or change it. When you are satisfied with the location, click the Next button.

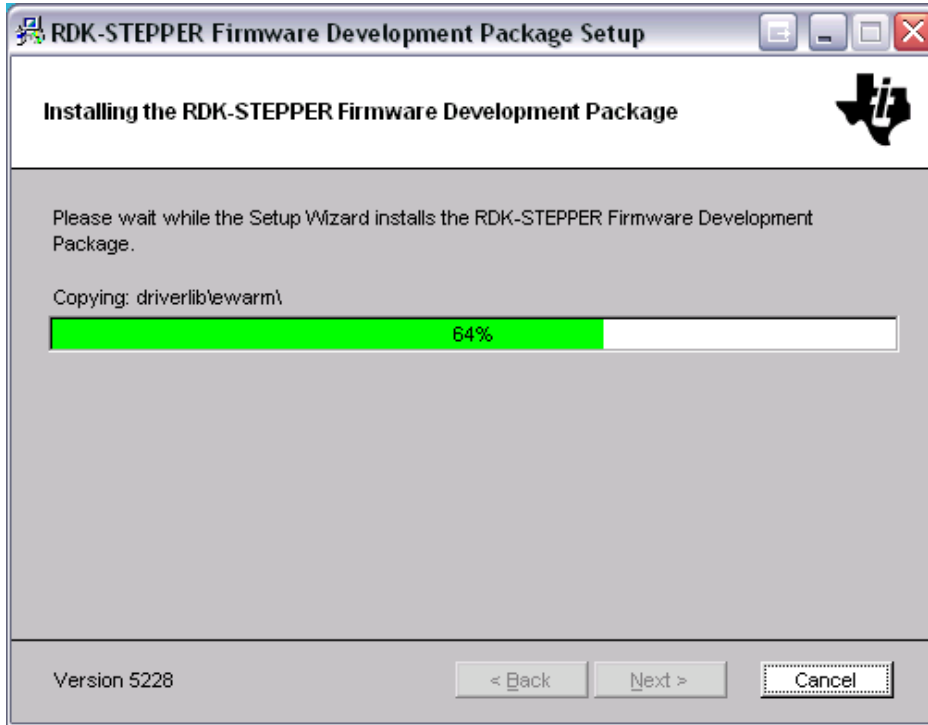


- You are now ready to install the Firmware Development Package. Click the Next button to begin the installation.



Stepper RDK README FIRST

6. You will be shown a progress screen as the software is installed.



7. When the installation is finished, click the Finish button to close the installer. The RDK firmware development package is now installed on your system.



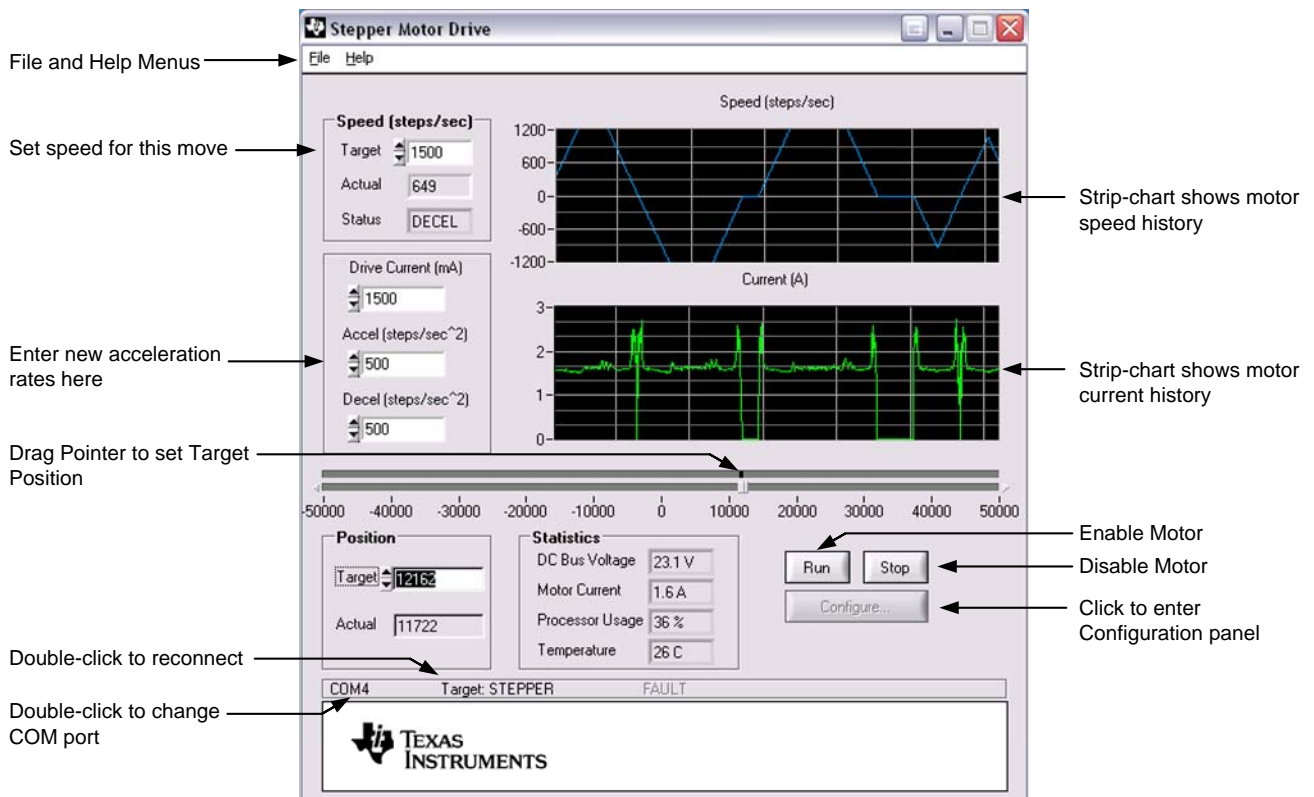
Stepper RDK README FIRST

Starting the RDK GUI

The following figure shows information about connecting to and operating the motor control using the RDK GUI. For now, use the main window for monitoring and control only. Read the *Stepper RDK User's Manual* before attempting to adjust operating parameters using the Configuration window.

Upon starting the RDK GUI program, the on-board interface on the RDK board is disabled, and the Speed/Position potentiometer and Select button will have no effect.

If the program has not been used before, then a dialog box appears that lets you select the COM port. Once you select a COM port, the program remembers the choice and does not ask again. However, at any time you can reopen the COM port dialog box by double-clicking on the COM port indicator on the main window (see next figure).



Other window controls are explained in the detail in the *Stepper Motor RDK User's Manual*.

Troubleshooting

Getting started with the Stepper RDK is easy, however, in case of problems with the Stepper RDK, here is some basic troubleshooting information. Additional troubleshooting information can be found in the *Stepper Motor RDK User's Manual*.

Stepper RDK README FIRST

Power LED is not ON when power is applied

- Check the fuse (see *Stepper Motor RDK User's Manual* for instructions on fuse replacement)
- Try reducing the motor Drive Current. The RDK power supply is limited to 15 W peak and is recommended primarily for initial evaluation.
- Cycle power to the wall adapter power supply.

Unable to connect to control using RDK GUI over USB

- Check virtual COM port assignment using Windows Device Manager. Windows may periodically assign a different COM port number when the Stepper RDK is connected.
- Remove any other virtual COM port devices from the PC.
- Reset the motor control board by pressing the RESET button.

The motor is no longer running smoothly

- The parameter settings have changed and are no longer optimal. Refer to the *Stepper Motor RDK User's Manual* for a detailed explanation on tuning motor parameters.
- The torque and/or inertia of the load may have changed. Stepper motors have complex characteristics that may require parameter adjustments for new operating conditions.

Conclusion

You have now successfully operated the stepper motor using the RDK in both standalone and RDK GUI-controlled modes. From here we recommend reading the *Stepper Motor RDK User's Manual*, which explains how to use the parameters accessible through the RDK GUI. Once you have completed that step, you'll be prepared to start adapting the software and hardware for a specific application. The *Stepper Motor RDK User's Manual* also contains information to assist with that process.

Stepper RDK README FIRST

References

The following references are included on the Stepper Motor Control RDK documentation CD and are also available for download at www.luminarymicro.com:

- *Stellaris Stepper Motor Control RDK User's Manual*, publication number RDK-Stepper
- *Stellaris Stepper Motor RDK Software Reference Manual*, publication number RDK-Stepper-srm

In addition, the following website may be useful:

- *Control of Stepping Motors – A Tutorial*, by Douglas W. Jones at <http://www.cs.uio.edu/~jones/step/>

Copyright © 2007–2009 Texas Instruments, Inc. All rights reserved. Stellaris and StellarisWare are registered trademarks of Texas Instruments. ARM and Thumb are registered trademarks, and Cortex is a trademark of ARM Limited. Other names and brands may be claimed as the property of others.

Texas Instruments
108 Wild Basin Rd., Suite 350
Austin, TX 78746
Main: +1-512-279-8800
Fax: +1-512-279-8879
<http://www.luminarymicro.com>



IMPORTANT NOTICE

Texas Instruments Incorporated and its subsidiaries (TI) reserve the right to make corrections, modifications, enhancements, improvements, and other changes to its products and services at any time and to discontinue any product or service without notice. Customers should obtain the latest relevant information before placing orders and should verify that such information is current and complete. All products are sold subject to TI's terms and conditions of sale supplied at the time of order acknowledgment.

TI warrants performance of its hardware products to the specifications applicable at the time of sale in accordance with TI's standard warranty. Testing and other quality control techniques are used to the extent TI deems necessary to support this warranty. Except where mandated by government requirements, testing of all parameters of each product is not necessarily performed.

TI assumes no liability for applications assistance or customer product design. Customers are responsible for their products and applications using TI components. To minimize the risks associated with customer products and applications, customers should provide adequate design and operating safeguards.

TI does not warrant or represent that any license, either express or implied, is granted under any TI patent right, copyright, mask work right, or other TI intellectual property right relating to any combination, machine, or process in which TI products or services are used. Information published by TI regarding third-party products or services does not constitute a license from TI to use such products or services or a warranty or endorsement thereof. Use of such information may require a license from a third party under the patents or other intellectual property of the third party, or a license from TI under the patents or other intellectual property of TI.

Reproduction of TI information in TI data books or data sheets is permissible only if reproduction is without alteration and is accompanied by all associated warranties, conditions, limitations, and notices. Reproduction of this information with alteration is an unfair and deceptive business practice. TI is not responsible or liable for such altered documentation. Information of third parties may be subject to additional restrictions.

Resale of TI products or services with statements different from or beyond the parameters stated by TI for that product or service voids all express and any implied warranties for the associated TI product or service and is an unfair and deceptive business practice. TI is not responsible or liable for any such statements.

TI products are not authorized for use in safety-critical applications (such as life support) where a failure of the TI product would reasonably be expected to cause severe personal injury or death, unless officers of the parties have executed an agreement specifically governing such use. Buyers represent that they have all necessary expertise in the safety and regulatory ramifications of their applications, and acknowledge and agree that they are solely responsible for all legal, regulatory and safety-related requirements concerning their products and any use of TI products in such safety-critical applications, notwithstanding any applications-related information or support that may be provided by TI. Further, Buyers must fully indemnify TI and its representatives against any damages arising out of the use of TI products in such safety-critical applications.

TI products are neither designed nor intended for use in military/aerospace applications or environments unless the TI products are specifically designated by TI as military-grade or "enhanced plastic." Only products designated by TI as military-grade meet military specifications. Buyers acknowledge and agree that any such use of TI products which TI has not designated as military-grade is solely at the Buyer's risk, and that they are solely responsible for compliance with all legal and regulatory requirements in connection with such use.

TI products are neither designed nor intended for use in automotive applications or environments unless the specific TI products are designated by TI as compliant with ISO/TS 16949 requirements. Buyers acknowledge and agree that, if they use any non-designated products in automotive applications, TI will not be responsible for any failure to meet such requirements.

Following are URLs where you can obtain information on other Texas Instruments products and application solutions:

Products

Amplifiers	amplifier.ti.com
Data Converters	dataconverter.ti.com
DLP® Products	www.dlp.com
DSP	dsp.ti.com
Clocks and Timers	www.ti.com/clocks
Interface	interface.ti.com
Logic	logic.ti.com
Power Mgmt	power.ti.com
Microcontrollers	microcontroller.ti.com
RFID	www.ti-rfid.com
RF/IF and ZigBee® Solutions	www.ti.com/lprf

Applications

Audio	www.ti.com/audio
Automotive	www.ti.com/automotive
Broadband	www.ti.com/broadband
Digital Control	www.ti.com/digitalcontrol
Medical	www.ti.com/medical
Military	www.ti.com/military
Optical Networking	www.ti.com/opticalnetwork
Security	www.ti.com/security
Telephony	www.ti.com/telephony
Video & Imaging	www.ti.com/video
Wireless	www.ti.com/wireless

Mailing Address: Texas Instruments, Post Office Box 655303, Dallas, Texas 75265
Copyright © 2009, Texas Instruments Incorporated