

LM3S9D96 DEVELOPMENT KIT README FIRST

Stellaris® LM3S9D96 Development Kit

The Stellaris LM3S9D96 Development Kit provides a feature-rich development platform to help familiarize the user with Stellaris microcontrollers. The highly integrated LM3S9D96 microcontroller features on-chip Ethernet MAC+PHY, USB OTG, External Peripheral Interface (EPI), and Controller Area Network (CAN), providing flexibility never before seen on ARM-based microcontrollers.

LM3S9D96 Development Board

Requirements

- You have a PC, with a USB interface, running Microsoft® Windows 2000, XP, or Vista
- You have the Stellaris LM3S9D96 Development Kit Documentation and Software CD

Board Set-Up

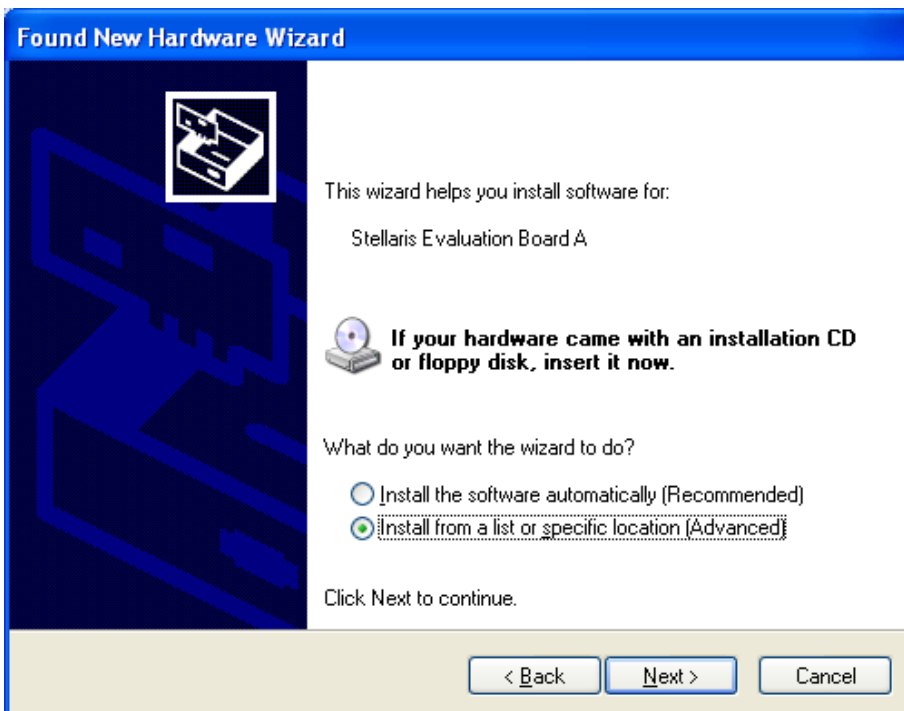
The LM3S9D96 Development Board is configured for immediate use. To power the board, use the 5 V power supply included in the kit. For debug and Virtual COM Port connectivity, use the supplied USB cable (type mini-B) to connect to the “ICDI USB” connector on the upper left corner of the board. Connect the other end (type A) to a free USB port on your host PC. If connecting the board through a USB hub, it must be a powered hub.

When you plug in the debug portion of the board for the first time, Windows starts the Found New Hardware Wizard and asks if Windows can connect to Windows Update to search for software. Select “No, not this time” and then click Next.

LM3S9D96 DEVELOPMENT KIT README FIRST

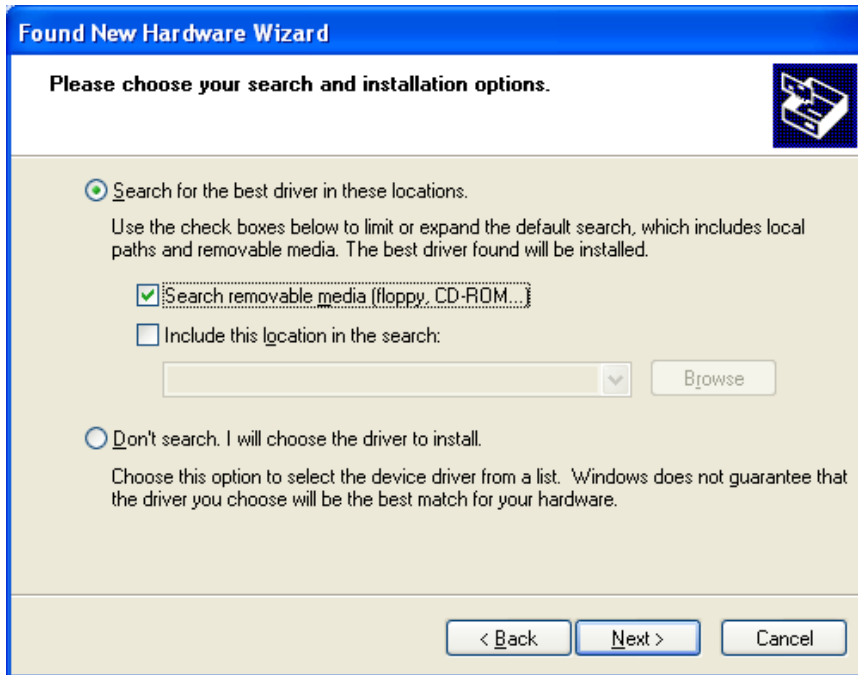


Next, the Found New Hardware Wizard asks from where to install the software. Select “Install from a list or specific location (Advanced)” and click Next.



LM3S9D96 DEVELOPMENT KIT README FIRST

Make sure the “Documentation and Software” CD that came with the development kit is in your CD-ROM drive. Select “Search for the best driver in these locations,” and check the “Search removable media (floppy, CD-ROM...)” option. Click Next.

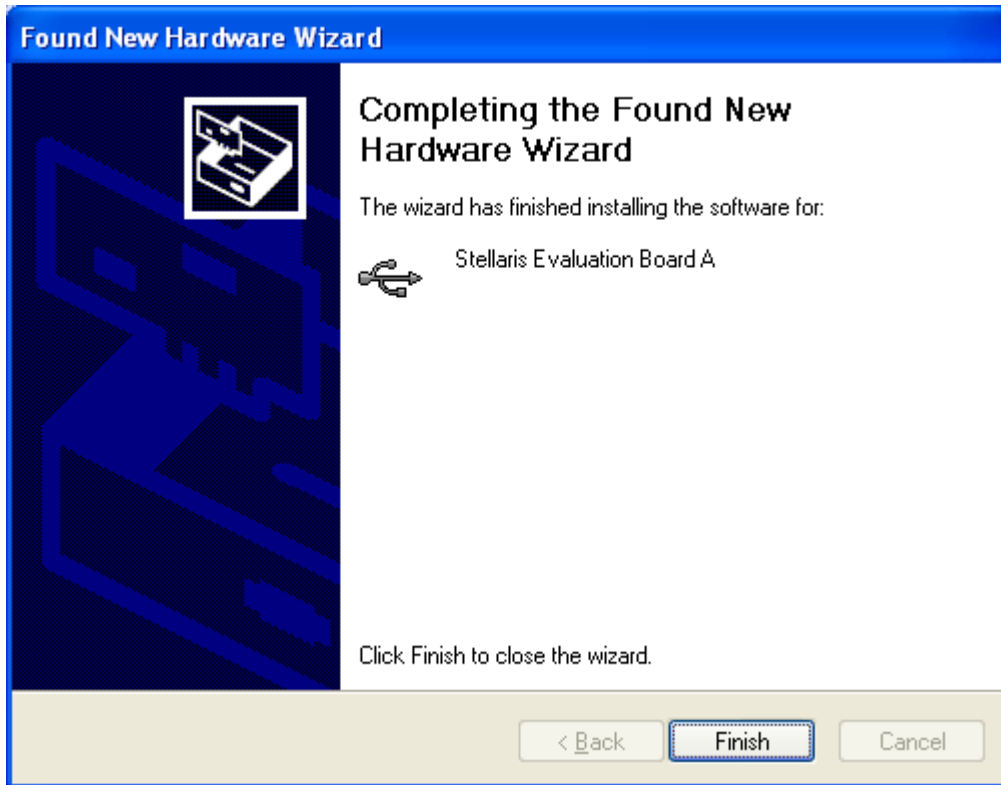


A warning may pop up during the Hardware Installation like the one below; click Continue Anyway.



LM3S9D96 DEVELOPMENT KIT README FIRST

Windows finishes installing the drivers for “Stellaris Evaluation Board A.” When the driver install is finished, the Found New Hardware Wizard window appears like the one below. Click Finish to close the dialog box.



You have just installed the drivers for “Stellaris Evaluation Board A.” The USB device built into the board is a composite USB device. After you click Finish, Windows automatically installs a driver for the “Stellaris Evaluation Board B” part of the composite USB device. Follow the same instructions as above to install the drivers for this device.

The Found New Hardware Wizard appears one last time. This is to install the drivers for the “Stellaris Virtual COM Port.” Again, follow the same instructions to install the drivers for this device.

Now all of the hardware drivers for the LM3S9D96 Development Board have been installed. These drivers give the debugger access to the JTAG interface and the host PC access to the Virtual COM Port.

With the drivers installed, Windows automatically detects any new Stellaris boards that you attach, and install the drivers for you.

LM3S9D96 DEVELOPMENT KIT

README FIRST

Quickstart Application

The LM3S9D96 Development Board comes pre-programmed with a quickstart application. Once you have powered the board, this application runs automatically. You have probably already noticed this running as you installed the drivers. A Stellaris menu appears that lets you select a variety of interesting applications.

The quickstart application is actually a collection of smaller applications. These include:

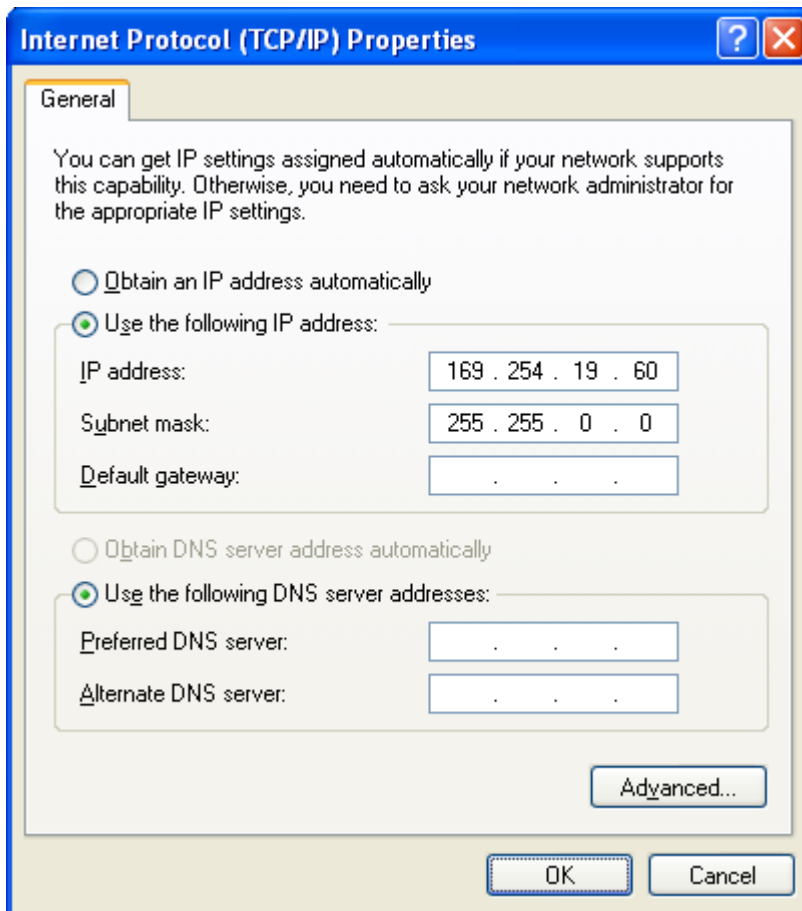
- **IO Examples**
Ethernet IP address, file system status, board IO status (POT value, mouse pointer location, LED on/off)
- **Graphics Demo**
Demonstrates the features of the Stellaris Graphics Library
- **Audio Player**
Browse and play WAV files from the included microSD card or USB stick
- **Image Viewer**
Browse and view images from the installed file system image (if present)
- **Web Server**

When the application starts running, you can use the touchscreen to navigate through the different applications. Note that the audio player can play uncompressed, PCM format WAV files from either the microSD card slot or a USB flash stick. When using a USB flash stick, the bit rate for the audio must be less than 64 Kbytes/sec for the audio to play smoothly.

If there is a DHCP server present on the LAN, the board attempts to obtain an IP address from the DHCP server. After about a minute, if no DHCP server is found, the board defaults to an IP address in the range of 169.254.xx.xx using AutoIP. The IP address then displays in the IO Examples sub application. To view the web page you must configure your host machine to be on the same subnet as the board. If connecting to a LAN, your PC's configuration should match the board's configuration, except for the IP address. In most cases, if you connect the board directly to your PC, your machine automatically detects the correct IP address and subnet settings after several seconds.

LM3S9D96 DEVELOPMENT KIT README FIRST

In some cases, you need to manually configure your IP address and mask subnet. To do this, disable the machine's wireless network connection and any other internet connections that could interfere with the network being created. Select the Internet Protocol (TCP/IP) connection within the Local Area Connection Properties and click Properties. Next, manually configure your IP address as 169.254.xx.yy (that is, use something different than the board) and your subnet mask to 255.255.0.0, as shown below.



Now you can connect your host machine directly to the LM3S9D96 Development Board with the Ethernet cable provided in the development kit. The integrated PHY on the LM3S9D96 has an Auto-MDX feature which allows you to use either a straight-through or cross-over Ethernet cable. To access the board's web page, simply type in the address IO Examples sub application (for example, <http://169.254.19.63>) into the address bar of your host's web browser and the web page will be loaded from the LM3S9D96 Development Board.

LM3S9D96 DEVELOPMENT KIT README FIRST

When the web server loads, there are a variety of things that you can view. You can browse the filesystems of the attached devices (microSD card or USB flash stick), as well as launch the Photo Gallery. The DK board is shipped with a suitable file system image for the Image Viewer in the serial flash device. If at any point, you need to replace this image, you can do so using TFTP. Locate the “ramfs_data.bin” file found in StellarisWare/boards/dk-lm3s9D96/qs-checkout, then type the following into the command line to install it over TFTP (assuming you already have TFTP installed):

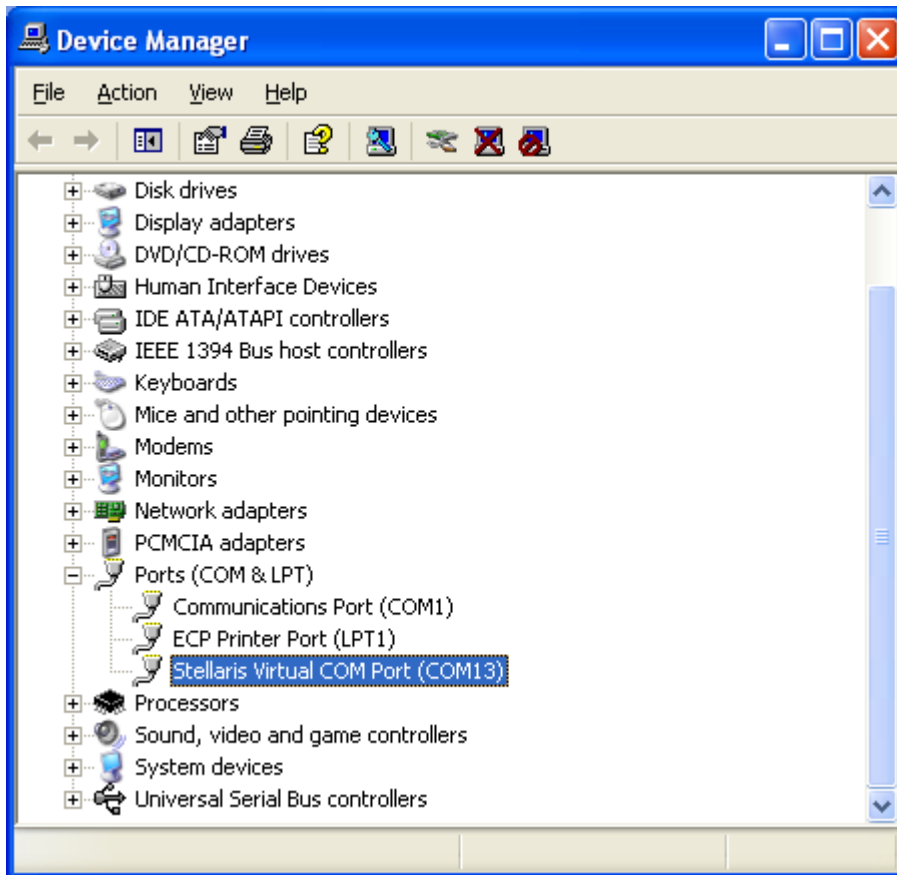
```
tftp -i <ip_address> PUT ramfs_data.bin eeprom
```

Once the filesystem image is installed, the board must be rebooted for the web server and Image Viewer applications to find it. The board can also receive commands over the UART. If you have connected to the ICDI interface, you will have a Virtual COM Port available to communicate with the board since UART0 of the LM3S9D96 is connected to the FTDI’s second serial channel. To view the command line, open up a terminal application such as HyperTerminal. Connect using COM#, where # is the number Windows has assigned the Virtual COM port. Set the serial connection to a baud rate of 115200, 8 data bits, no parity, 1 stop bit, and no flow control.

To determine which COM# Windows has assigned to the Virtual COM port on the LM3S9D96 microcontroller, follow these steps:

- 1) From the Start Menu, select Control Panel, then double-click the System icon.
- 2) Select the Hardware tab.
- 3) Click the Device Manager button.
- 4) Click the + symbol to expand the Ports (COM & LPT) group.
- 5) “Stellaris Virtual COM Port (COM#)” is listed as shown in the figure below. This COM# is the device you connect to using your terminal application. In this example, the COM port is COM13.

LM3S9D96 DEVELOPMENT KIT README FIRST



You have the following options when connected to the serial interface:

```
> help
```

```
Available commands
```

```
-----  
help      : Display list of commands  
h         : alias for help  
?         : alias for help  
addr      : Show ethernet and IP addresses  
ls        : Display list of files  
chdir     : Change directory  
cd <dir>  : alias for chdir  
pwd       : Show current working directory  
cat <file>: Show contents of a text file
```


LM3S9D96 DEVELOPMENT KIT README FIRST

Software Development Tools

The next step is to install and run the software development tools included in the development kit. For more information, see the quickstart guides included on the Stellaris LM3S9D96 Development Kit CD. Additional tools may be available through the www.ti.com/stellaris web site.

References

The following references are included on the Stellaris LM3S9D96 Development Kit Documentation and Software CD and are also available for download at www.ti.com/stellaris:

- *Stellaris LM3S9D96 Development Kit User's Manual*
- *DK-LM3S9D96 Firmware Development Package User's Guide*
- DK-LM3S9D96 Firmware Development Package
- *StellarisWare® Driver Library User's Manual*
- Stellaris LM3S9D96 Microcontroller Data Sheet

Copyright © 2011 Texas Instruments, Inc. All rights reserved. Stellaris and StellarisWare are registered trademarks of Texas Instruments. ARM and Thumb are registered trademarks, and Cortex is a trademark of ARM Limited. Other names and brands may be claimed as the property of others.

Texas Instruments
108 Wild Basin Rd., Suite 350
Austin, TX 78746
<http://www.ti.com/stellaris>



IMPORTANT NOTICE

Texas Instruments Incorporated and its subsidiaries (TI) reserve the right to make corrections, modifications, enhancements, improvements, and other changes to its products and services at any time and to discontinue any product or service without notice. Customers should obtain the latest relevant information before placing orders and should verify that such information is current and complete. All products are sold subject to TI's terms and conditions of sale supplied at the time of order acknowledgment.

TI warrants performance of its hardware products to the specifications applicable at the time of sale in accordance with TI's standard warranty. Testing and other quality control techniques are used to the extent TI deems necessary to support this warranty. Except where mandated by government requirements, testing of all parameters of each product is not necessarily performed.

TI assumes no liability for applications assistance or customer product design. Customers are responsible for their products and applications using TI components. To minimize the risks associated with customer products and applications, customers should provide adequate design and operating safeguards.

TI does not warrant or represent that any license, either express or implied, is granted under any TI patent right, copyright, mask work right, or other TI intellectual property right relating to any combination, machine, or process in which TI products or services are used. Information published by TI regarding third-party products or services does not constitute a license from TI to use such products or services or a warranty or endorsement thereof. Use of such information may require a license from a third party under the patents or other intellectual property of the third party, or a license from TI under the patents or other intellectual property of TI.

Reproduction of TI information in TI data books or data sheets is permissible only if reproduction is without alteration and is accompanied by all associated warranties, conditions, limitations, and notices. Reproduction of this information with alteration is an unfair and deceptive business practice. TI is not responsible or liable for such altered documentation. Information of third parties may be subject to additional restrictions.

Resale of TI products or services with statements different from or beyond the parameters stated by TI for that product or service voids all express and any implied warranties for the associated TI product or service and is an unfair and deceptive business practice. TI is not responsible or liable for any such statements.

TI products are not authorized for use in safety-critical applications (such as life support) where a failure of the TI product would reasonably be expected to cause severe personal injury or death, unless officers of the parties have executed an agreement specifically governing such use. Buyers represent that they have all necessary expertise in the safety and regulatory ramifications of their applications, and acknowledge and agree that they are solely responsible for all legal, regulatory and safety-related requirements concerning their products and any use of TI products in such safety-critical applications, notwithstanding any applications-related information or support that may be provided by TI. Further, Buyers must fully indemnify TI and its representatives against any damages arising out of the use of TI products in such safety-critical applications.

TI products are neither designed nor intended for use in military/aerospace applications or environments unless the TI products are specifically designated by TI as military-grade or "enhanced plastic." Only products designated by TI as military-grade meet military specifications. Buyers acknowledge and agree that any such use of TI products which TI has not designated as military-grade is solely at the Buyer's risk, and that they are solely responsible for compliance with all legal and regulatory requirements in connection with such use.

TI products are neither designed nor intended for use in automotive applications or environments unless the specific TI products are designated by TI as compliant with ISO/TS 16949 requirements. Buyers acknowledge and agree that, if they use any non-designated products in automotive applications, TI will not be responsible for any failure to meet such requirements.

Following are URLs where you can obtain information on other Texas Instruments products and application solutions:

Products

Audio	www.ti.com/audio
Amplifiers	amplifier.ti.com
Data Converters	dataconverter.ti.com
DLP® Products	www.dlp.com
DSP	dsp.ti.com
Clocks and Timers	www.ti.com/clocks
Interface	interface.ti.com
Logic	logic.ti.com
Power Mgmt	power.ti.com
Microcontrollers	microcontroller.ti.com
RFID	www.ti-rfid.com
RF/IF and ZigBee® Solutions	www.ti.com/lprf

Applications

Communications and Telecom	www.ti.com/communications
Computers and Peripherals	www.ti.com/computers
Consumer Electronics	www.ti.com/consumer-apps
Energy and Lighting	www.ti.com/energy
Industrial	www.ti.com/industrial
Medical	www.ti.com/medical
Security	www.ti.com/security
Space, Avionics and Defense	www.ti.com/space-avionics-defense
Transportation and Automotive	www.ti.com/automotive
Video and Imaging	www.ti.com/video
Wireless	www.ti.com/wireless-apps

TI E2E Community Home Page

e2e.ti.com

Mailing Address: Texas Instruments, Post Office Box 655303, Dallas, Texas 75265
Copyright © 2011, Texas Instruments Incorporated