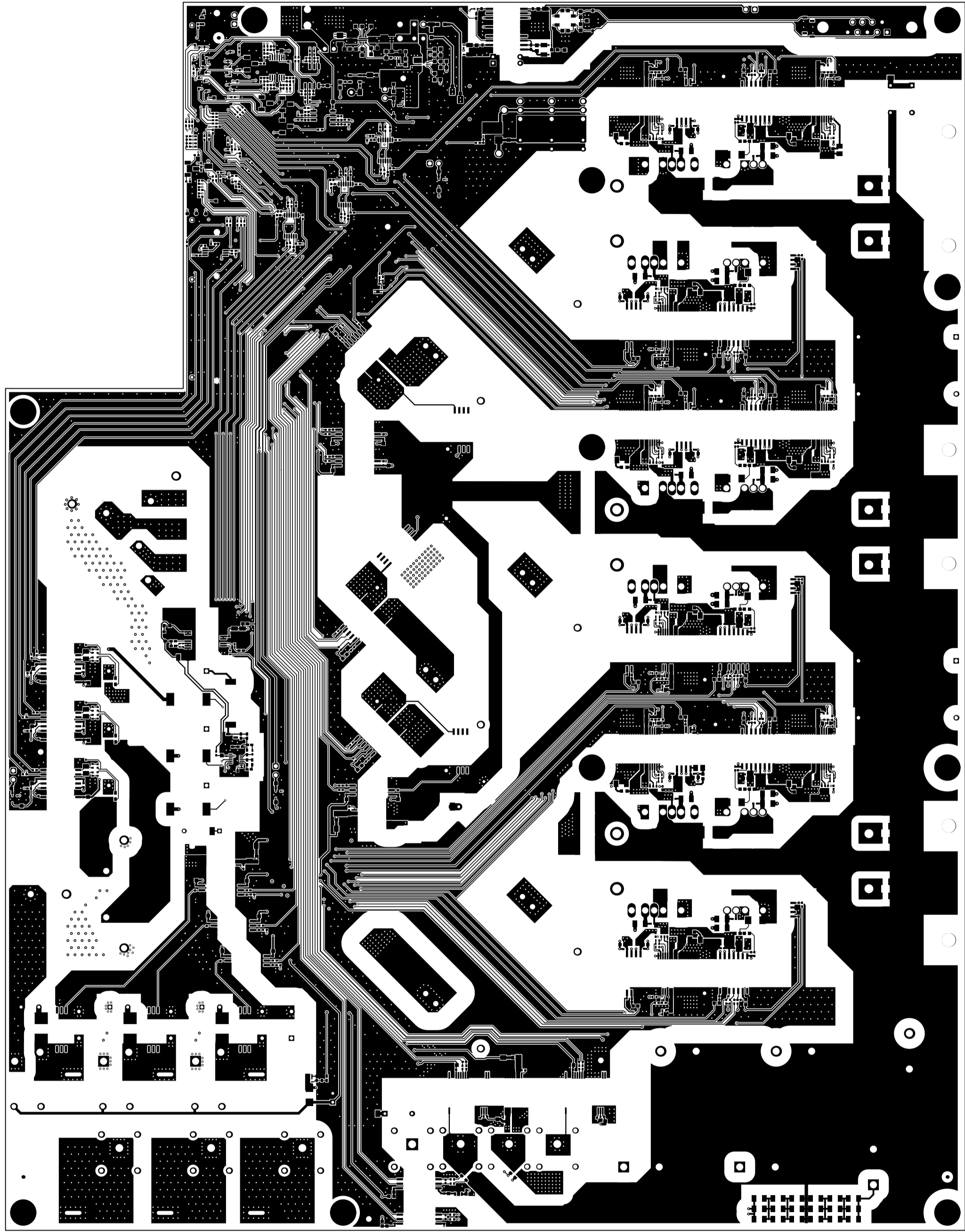
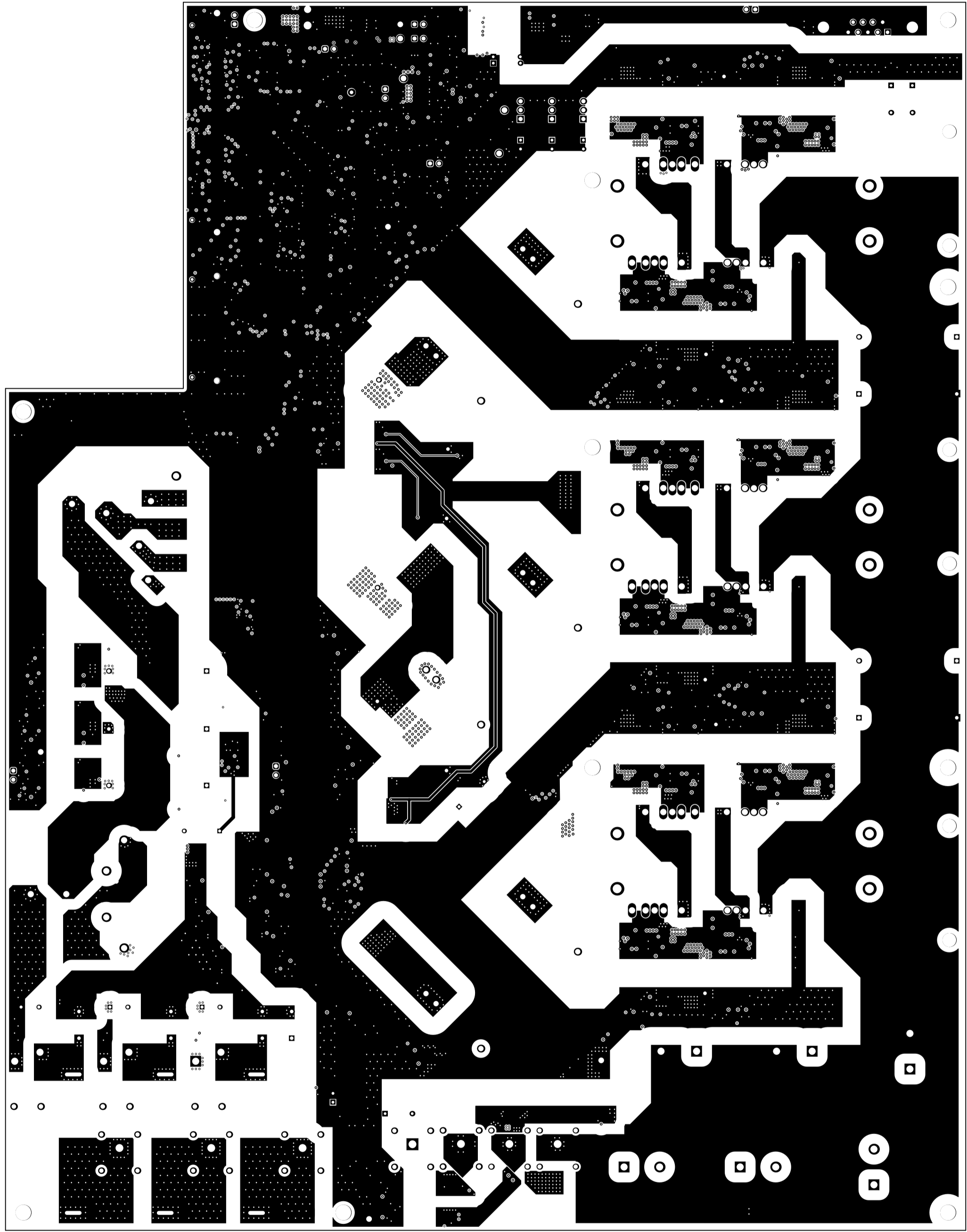


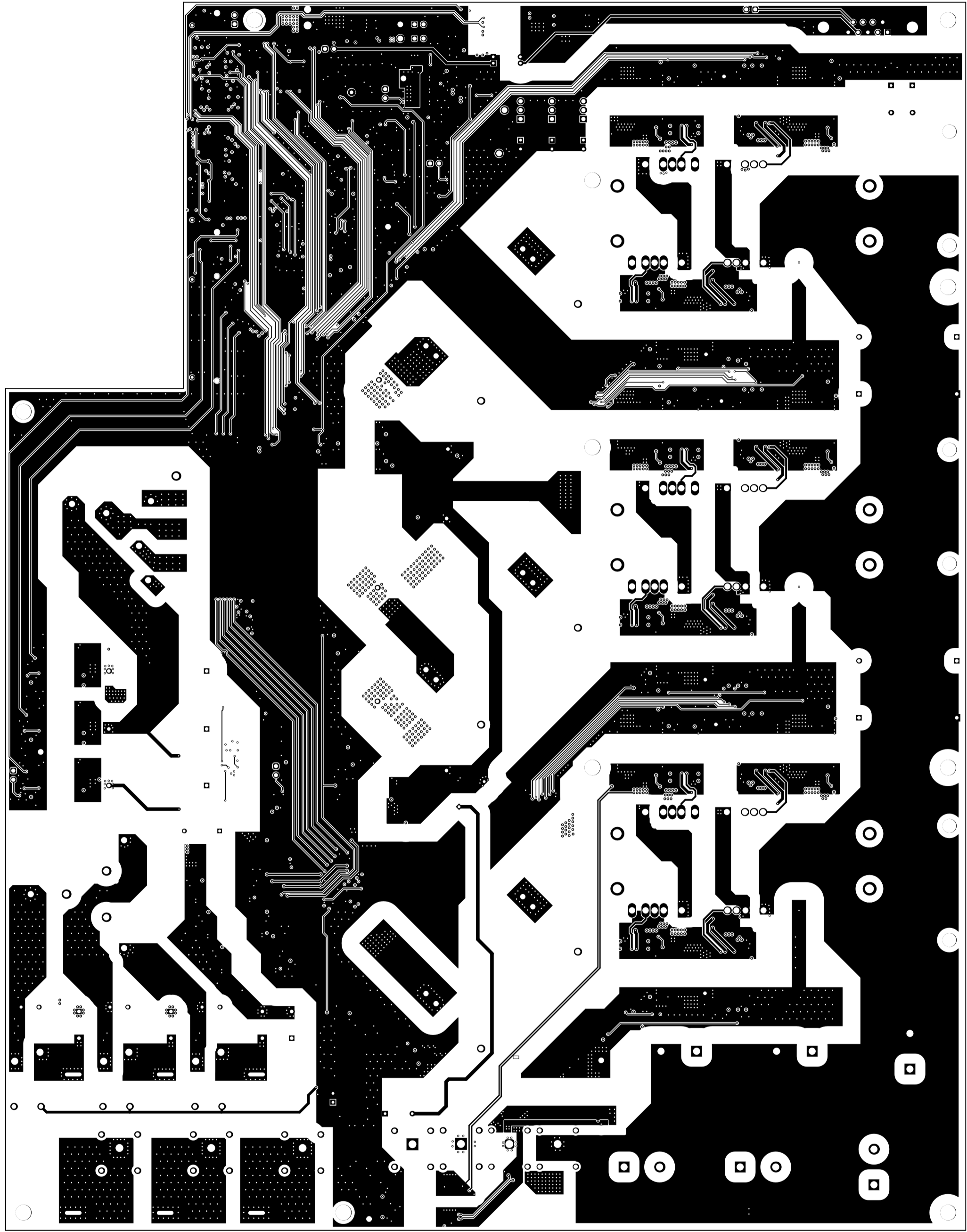
1 TOP SIDE	BOARD #	TIDM-06406	REV#	E7.1	BAW REV#	Not In VersionControl
Top Solder						
Top Solder Mask	GENERATED	3-11-2024	10:49:10 AM	TEXAS INSTRUMENTS		



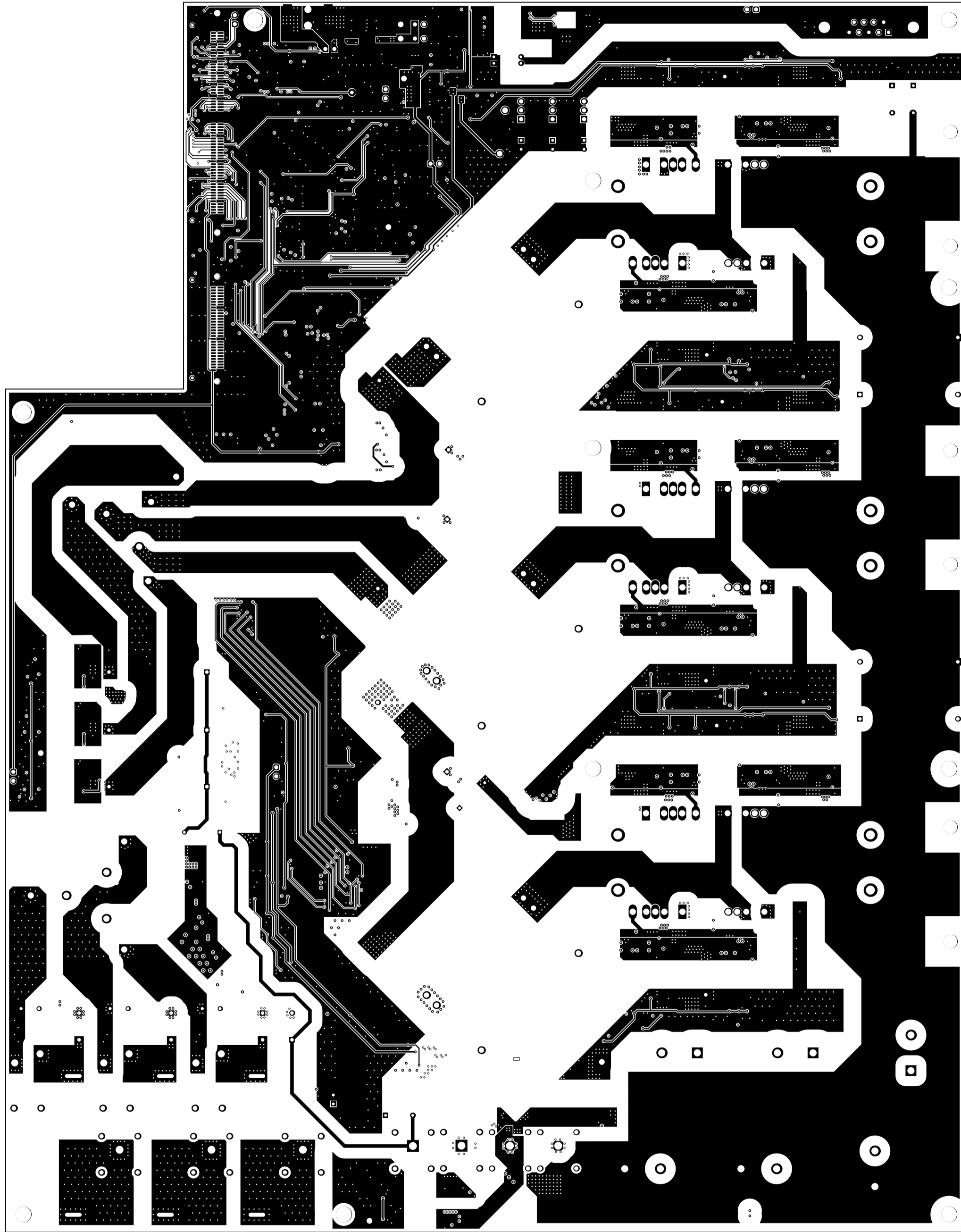
1 TOP SIDE	BOARD #	TDA-0606	REV	E7.1	BAI REV	Not In VersionControl
Top Layer	GENERATED	1	3-11-2024	10:49:10 AM	TEXAS INSTRUMENTS	



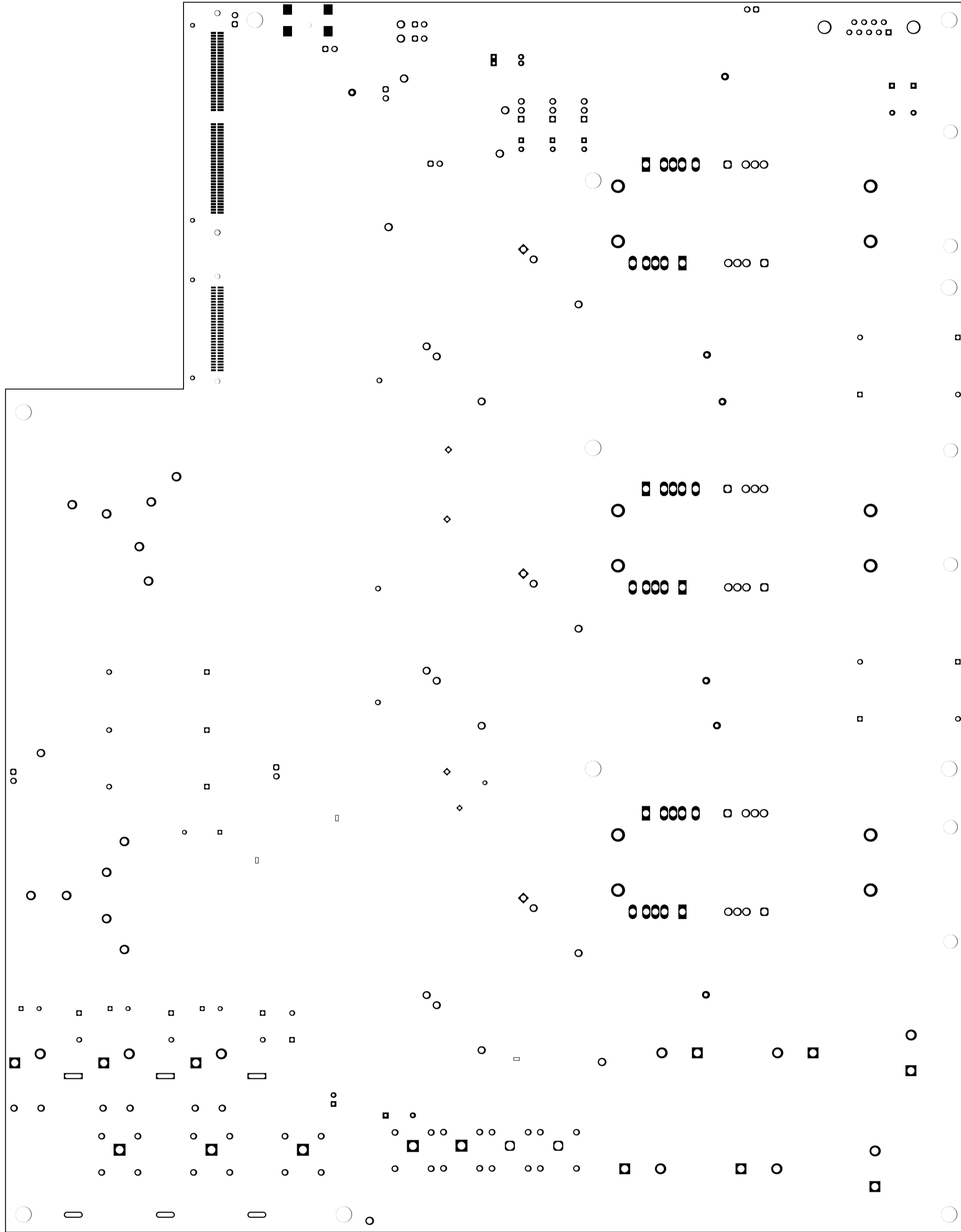
1 TOP SIDE	BOARD #	TIDM-0606	REV	E7.1	BAI REV	Not In VersionControl
Signal Layer 1	GENERATED	1	3-11-2024	10:49:10 AM	TEXAS INSTRUMENTS	



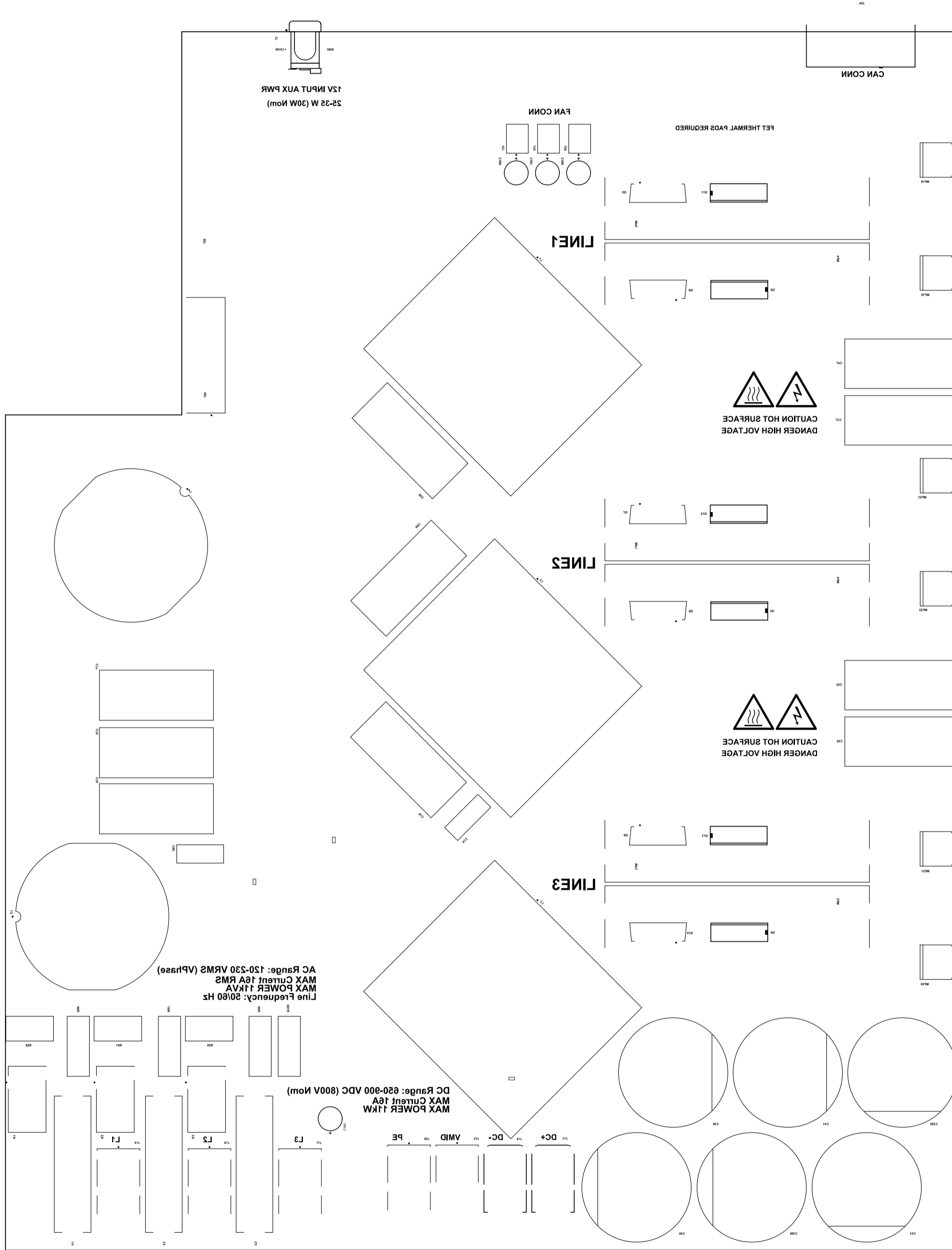
1 TOP SIDE	BOARD #	TDA-0606	REV	E7.1	BAI REV	Not In VersionControl
Signal Layer 2	GENERATED	1	3-11-2024	10:49:11 AM	TEXAS INSTRUMENTS	



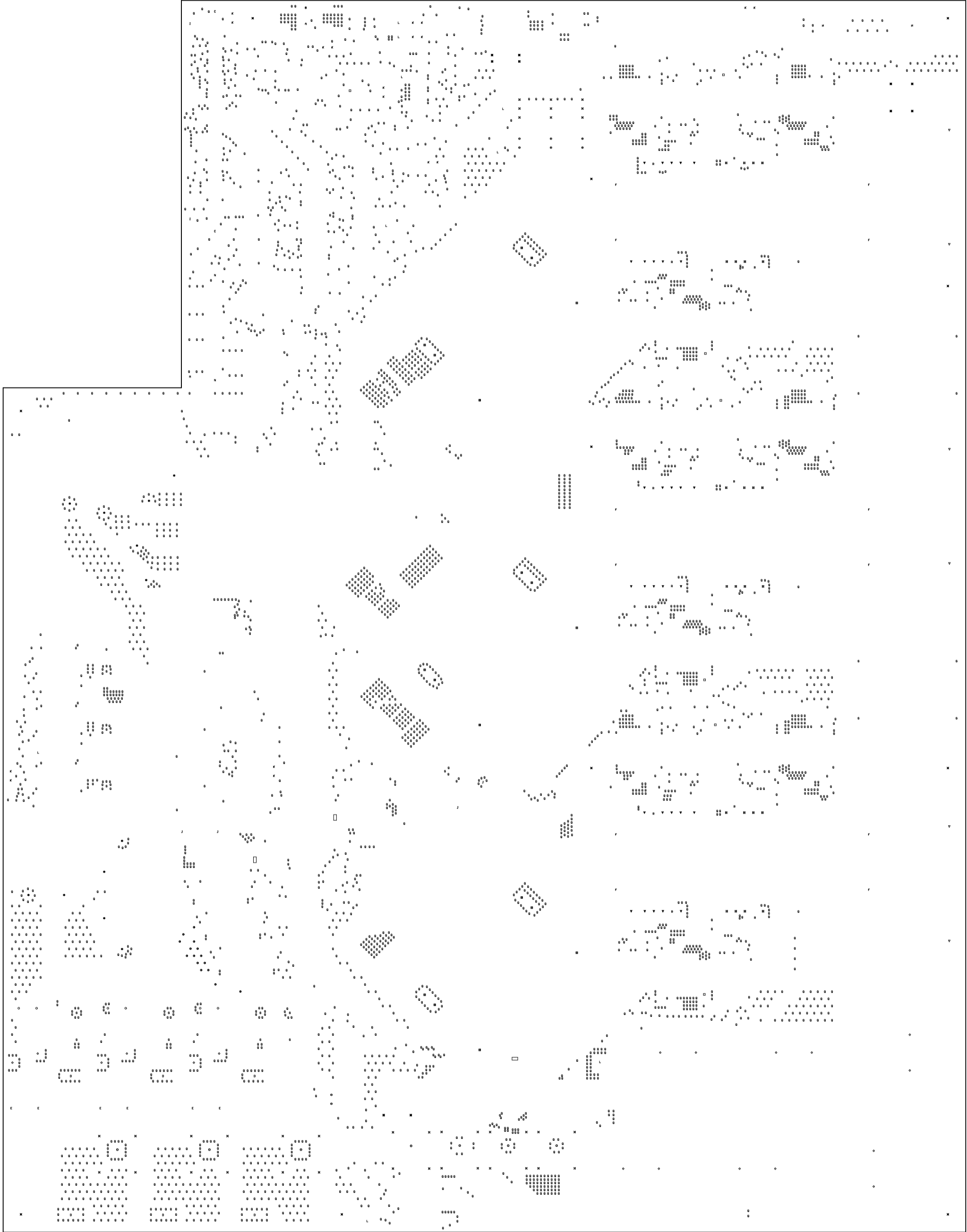
1 TOP SIDE	BOARD #	TDA-0606	REV	E7.1	BAI REV	Not In VersionControl
Bottom Layer	GENERATED	1	3-11-2026	10:49:11 AM	TEXAS INSTRUMENTS	



1 TOP SIDE	BOARD #	TID#-0606	REV#	EP:1	BA# REV#	Not In VersionControl
Bottom Solder						
Bottom Solder Mask						
GENERATED	1	3-11-2026	10:49:11 AM	TEXAS INSTRUMENTS		



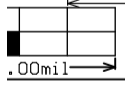
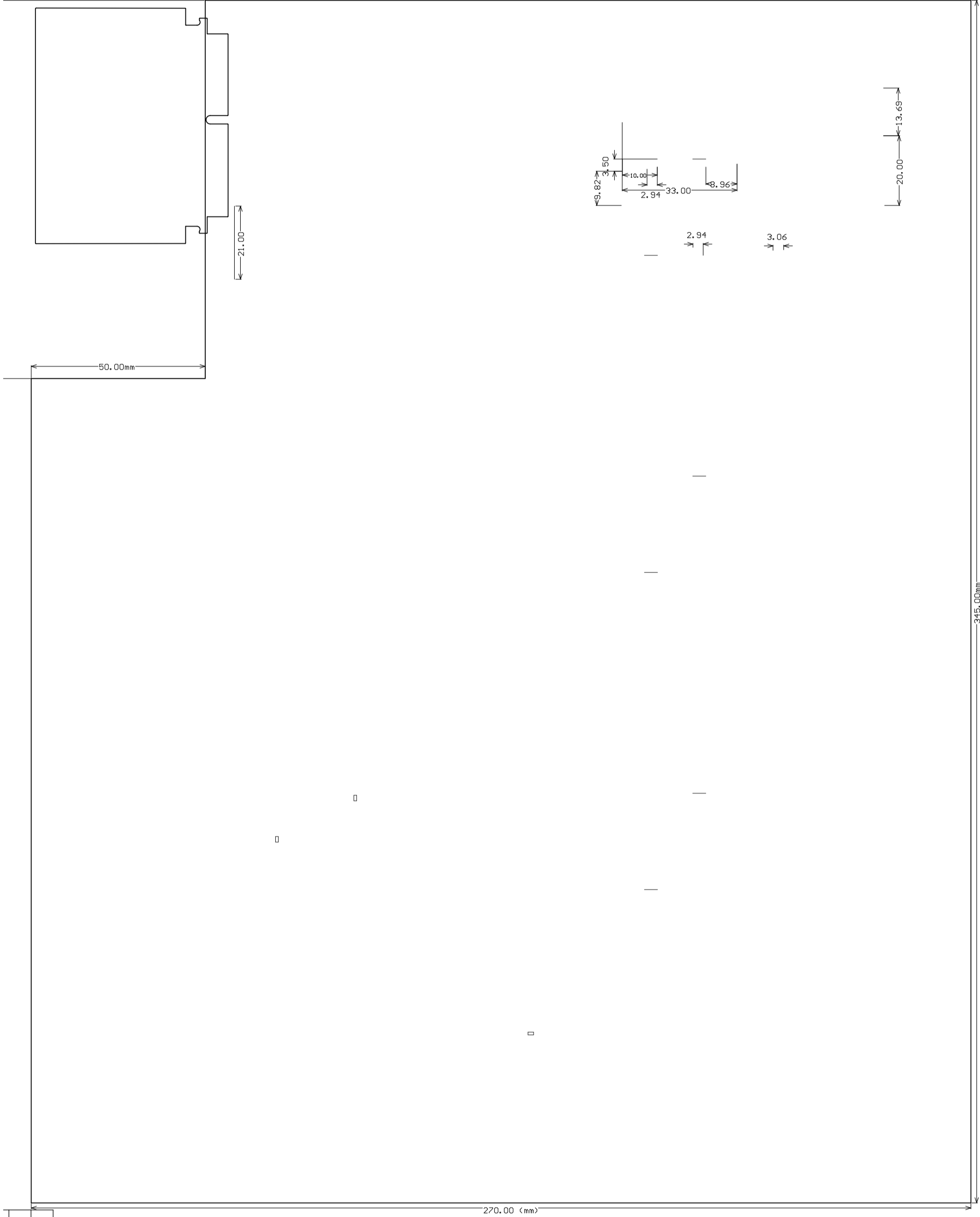
1 TOP SIDE	BOMREV	TID# 05605	REV	EP1	BAV REV	Not In VersionControl
Bottom Overlay	GENERATED	2022-11-24	11:49:10 AM			TEXAS INSTRUMENTS



Symbol	Count
B	1
A	1
I	2
M	2
N	2
C	2
H	2
J	4
O	6
E	6
∇	6
D	6
□	7
⊗	7
⊙	8
L	9
⊠	10
⊞	11
R	12
⊛	12
F	12
●	15
K	18
⊞	18
◇	18
⊞	24
∇	30
G	37
X	37
0	4117
4442 Total	

Slot definitions : R
H

1 TOP SIDE	BORD #	TID-0606	REV	EX1	BAI REV	Not In VersionControl
Dr11 Drawing						
Dr11 Drawing	GENERATED	3-11-2026	10:49:11 AM	TEXAS INSTRUMENTS		



TOP SIDE	BOARD #	TID#	REV#	EX#	BAK REV#	Not In VersionControl
PC Board Dimensions						
Board Dimensions	GENERATED	3-11-2026	10-19-12 AM			TEXAS INSTRUMENTS

IMPORTANT NOTICE AND DISCLAIMER

TI PROVIDES TECHNICAL AND RELIABILITY DATA (INCLUDING DATASHEETS), DESIGN RESOURCES (INCLUDING REFERENCE DESIGNS), APPLICATION OR OTHER DESIGN ADVICE, WEB TOOLS, SAFETY INFORMATION, AND OTHER RESOURCES "AS IS" AND WITH ALL FAULTS, AND DISCLAIMS ALL WARRANTIES, EXPRESS AND IMPLIED, INCLUDING WITHOUT LIMITATION ANY IMPLIED WARRANTIES OF MERCHANTABILITY, FITNESS FOR A PARTICULAR PURPOSE OR NON-INFRINGEMENT OF THIRD PARTY INTELLECTUAL PROPERTY RIGHTS.

These resources are intended for skilled developers designing with TI products. You are solely responsible for (1) selecting the appropriate TI products for your application, (2) designing, validating and testing your application, and (3) ensuring your application meets applicable standards, and any other safety, security, regulatory or other requirements.

These resources are subject to change without notice. TI grants you permission to use these resources only for development of an application that uses the TI products described in the resource. Other reproduction and display of these resources is prohibited. No license is granted to any other TI intellectual property right or to any third party intellectual property right. TI disclaims responsibility for, and you fully indemnify TI and its representatives against any claims, damages, costs, losses, and liabilities arising out of your use of these resources.

TI's products are provided subject to [TI's Terms of Sale](#), [TI's General Quality Guidelines](#), or other applicable terms available either on [ti.com](#) or provided in conjunction with such TI products. TI's provision of these resources does not expand or otherwise alter TI's applicable warranties or warranty disclaimers for TI products. Unless TI explicitly designates a product as custom or customer-specified, TI products are standard, catalog, general purpose devices.

TI objects to and rejects any additional or different terms you may propose.

Copyright © 2026, Texas Instruments Incorporated

Last updated 10/2025