

# Technical White Paper

## Using Lasers with DLP® DMD Technology

---



### ABSTRACT

TI DMD technology can be viewed as a two dimensional diffraction grating. This application note details DMD diffraction, how to achieve blaze conditions, and discover useful formulas. This document examines the two-dimensional diffraction characteristics of DMDs, detailing both the advantages and challenges they present in optical applications.

---

### Table of Contents

<b>1 Introduction</b> .....	2
<b>2 Understanding Diffraction – An Intuitive View</b> .....	2
2.1 Single Slit Diffraction.....	2
2.2 Multiple Slit Diffraction.....	3
2.3 Reflective Diffraction Gratings.....	3
2.4 Extending to Two Dimensional Gratings.....	5
2.5 The DLP® DMD as a Two Dimensional Grating .....	6
2.6 Blaze Formulas.....	8
<b>3 Advantages and Considerations</b> .....	9
<b>4 Conclusion</b> .....	9
<b>5 References</b> .....	9
<b>6 Revision History</b> .....	9

### List of Figures

Figure 2-1. Location of Diffraction Orders.....	4
Figure 2-2. Location of Sinc Envelope Center.....	4
Figure 2-3. Blaze Condition (2 <sup>nd</sup> Order).....	5
Figure 2-4. 2D Sinc envelope (grayscale).....	6
Figure 2-5. 3D Hemisphere View Of Orders .....	6
Figure 2-6. View of Orders From Above (mapped Space).....	6
Figure 2-7. View of Numbered Orders And Envelope Center for a DMD .....	7
Figure 2-8. Relationship Between Incident, Tilt and Blaze.....	7

### Trademarks

DLP® is a registered trademark of Texas Instruments Incorporated.  
All trademarks are the property of their respective owners.

## 1 Introduction

The DLP® Digital Micromirror Device (DMD) has long been used in video projection systems for commercial and consumer applications. The DMD is also an attractive Spatial Light Modulator (SLM) for applications that can use monochromatic or coherent light sources both inside and outside of the visible spectrum.

The DMD presents some unique advantages and considerations that must be understood for these applications particularly when using coherent or semi-coherent sources with the DMD. When used with such sources the fact that the DMD is a 2D array of periodically spaced mirrors cannot be ignored, rather the diffractive effects can be understood and even exploited.

The purpose of this paper is to present an intuitive understanding of the 2D diffraction properties of the DMD and the advantages and challenges that result.

## 2 Understanding Diffraction – An Intuitive View

### 2.1 Single Slit Diffraction

Consider diffraction from a single slit. Assume that the length of the slit is much larger than the height  $a$  of the slit so that the height along the slit is not considered. Assume that the distance  $D$  to the “screen” is much larger than the slit width. If the incident light is a monochromatic plane wave, then there are some angles in which the overall light from the slit constructively interferes and others that destructively interfere giving rise to light and dark bands on the screen. This is illustrated in [Single-Slit Diffraction](#).

---

#### Note

If the normal to the plane of the slit opening (also normal to the screen) is 0 degrees and the center of the slit is the origin, then the intensity at the screen is proportional to  $\left(\frac{\sin(U \times \sin(\theta))}{U \times \sin(\theta)}\right)^2$ . This is simply the "Sinc" function with the argument being  $(U \times \sin(\theta))$

---

Now let us replace the flat screen with a cylindrical screen centered on the slit and let the distance to the screen be  $R$ , the radius of the semicircle. Then for every angle to the screen we can project back to the plane of the slit such that we can now map every angle to  $x$  on a line such that the distance from the origin is given by  $x = R \times \sin(\theta)$ <sup>1</sup>. For ease,  $R = 1$  so that  $x = \sin(\theta)$ . With this mapping to angular space,  $x$  ranges from  $[-1$  to  $1]$  as  $\theta$  ranges from  $[-90^\circ$  to  $90^\circ]$ . All values outside of that range are non-physical.

The intensity profile of the bands is proportional to

$$\text{Sinc}^2\left[\pi\frac{a}{\lambda}\sin(\theta)\right] \quad (1)$$

which, with the mapping chosen becomes

$$\text{Sinc}^2\left[\pi\frac{a}{\lambda}x\right] \quad (2)$$

2

To determine how much light goes into each subtended angle, all of the light that enters the slit must be accounted for. The profile function accommodates any  $x$  such that

$$-\infty \leq x \leq \infty \quad (3)$$

but  $x$  is restricted to

$$-1 \leq x \leq 1 \quad (4)$$

as previously noted.

---

<sup>1</sup> See Harvey-Shack *Cosine space*

<sup>2</sup> This function has zeros when  $\frac{a}{\lambda} = k$ , ( $k \neq 0$ ) where  $k$  is an interger, so that the spacing between minima is  $\Delta x = \frac{\lambda}{a}$ .

When the far field is integrated,

$$A \int_{-1}^1 \text{Sinc}^2 \left[ \pi \frac{a}{\lambda} (x - x_i) \right] dx = \Phi \text{ (total flux at the slit).} \quad (5)$$

All the light goes somewhere into the space restricted by  $\pm 90^\circ$ . This normalization allows to determine the proportionality constant  $A$  that gives the intensity at each angle. All of the angles outside  $\pm 90^\circ$  must be zero, therefore integrating the intensity of all the bands calculates  $A$ .

## 2.2 Multiple Slit Diffraction

If users introduce multiple identical slits so that the distance from slit center to slit center is “ $d$ ” and if the number of slits is very large, then, because of phase relationships between the slits, light is restricted to very narrow lines called diffraction orders. These orders are located at:  $\sin(\theta) = m \frac{\lambda}{d}$  (where  $m$  is an integer<sup>3</sup>).

Changing the incident angle of the light simply slides the orders over to be centered on the principle ray. In other words the 0<sup>th</sup> order moves and is also located at  $(\theta_r = -\theta_i)$ . Now the orders are located at:

$$\sin(\theta) = m \frac{\lambda}{d} - \sin(\theta_i) \text{ or } x = m \frac{\lambda}{d} - x_i$$

The interesting feature of the resulting pattern is that the relative intensity envelope of these orders is just the intensity profile of a single slit. Notice that this is an envelope. Light is only allowed at the order locations but the relative intensity is obtained by the height of the  $\text{Sinc}^2$  profile at the order location. The following link has a very good illustration: [Multi-Slit Diffraction](#)

Since the orders and the envelope move together with changing incident angle, the 0<sup>th</sup> order and the peak of the  $\text{Sinc}^2$  envelope are locked together. This means that the 0<sup>th</sup> order receives more energy than any other order. How much more is determined by the width of the slits, “ $a$ ”, relative to the spacing (pitch), “ $d$ ”.

Again all of the light must be accounted for but now because of the discrete orders the equation becomes

$$A \sum_m \text{Sinc}^2 \left( \pi \frac{\lambda}{a} \left( m \frac{\lambda}{d} - x_i \right) \right) = \Phi \text{ for all orders such that } -1 \leq \left( m \frac{\lambda}{d} - x_i \right) \leq 1 .$$

In other words, only those orders that lie in the real space  $[\pm 90^\circ]$  can receive light.

## 2.3 Reflective Diffraction Gratings

Consider a reflective grating so that mirror faces replace the slits. The incident light (plane wave) is now on the same side as the reflected light. All of the previous discussion applies to the grating, but now we add one more degree of control to the light. As before, the order locations are determined by the grating pitch, the wavelength and the incident angle. The 0<sup>th</sup> order simply follows the specular reflection relative to the normal of the grating surface  $(\theta_r = -\theta_i)$ .

<sup>3</sup> The integer, “ $m$ ”, is called number of the diffraction order and can be negative or positive. The order at a given “ $m$ ” is called the “ $m^{\text{th}}$ ” order

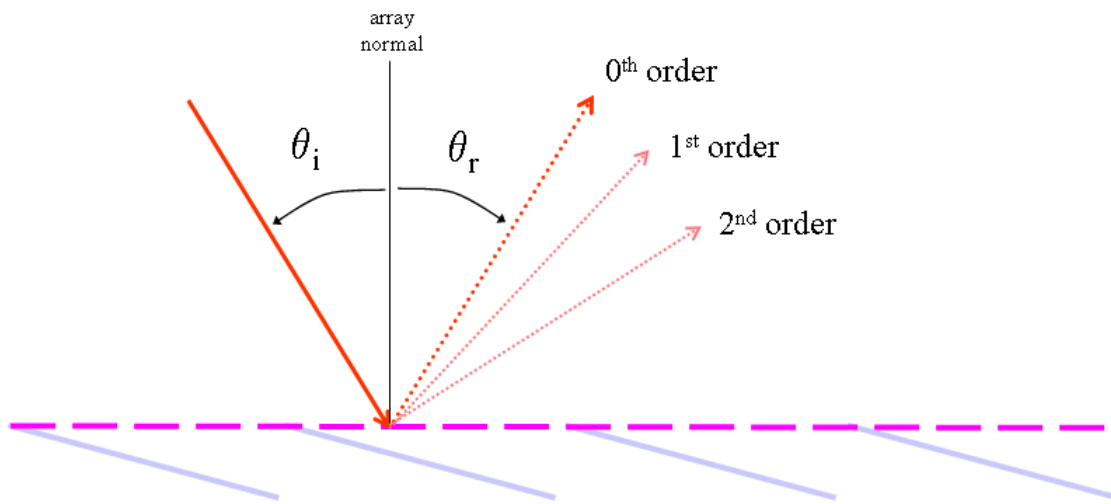


Figure 2-1. Location of Diffraction Orders

Now, however, the groove faces can be made with a normal that is not collinear with the grating normal. The result being that the center of the  $\text{Sinc}^2$  envelope is now decoupled from the 0<sup>th</sup> order. Rather than being locked to the 0<sup>th</sup> order the center of the envelope now points in the direction of the specular reflection from the individual groove faces. [i.e.  $(\phi_r = -\phi_i)$  relative to the groove face normal]

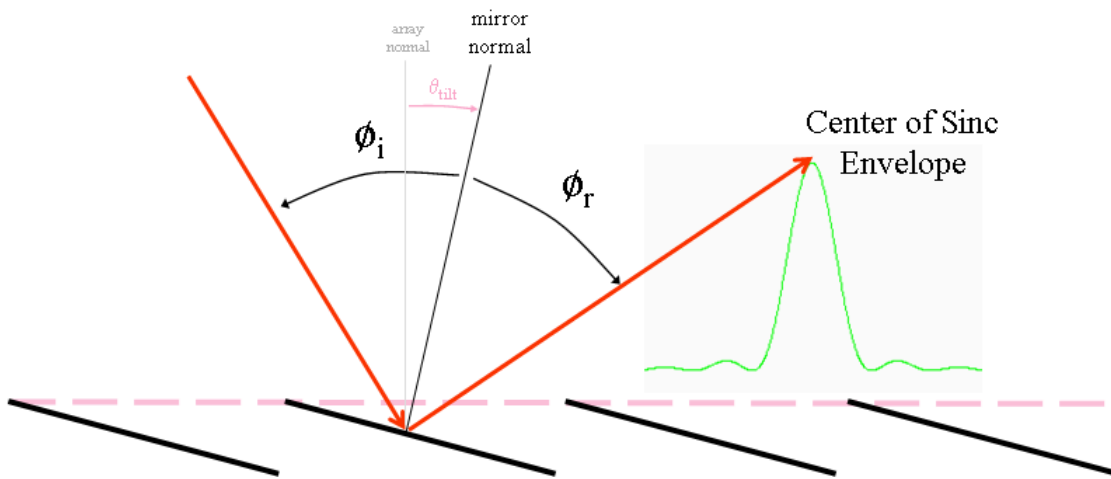


Figure 2-2. Location of Sinc Envelope Center

When the incident angle and the groove tilt are arranged so that the  $\text{Sinc}^2$  envelope center (peak) lines up with an order, then the order is said to be “blazed”. A majority of the energy is directed into the “blazed” order.<sup>4</sup> When the envelope center falls between orders then energy is distributed into multiple orders. The consequence is that no one order receives a majority of the light. A condition often referred to as “off-blaze”.

<sup>4</sup> When the blaze condition is arranged so that the incident light and the order of interest are collinear the condition is referred to as a “Littrow” blaze. This condition can allow the same optics to be used for both input and output of the order of interest.

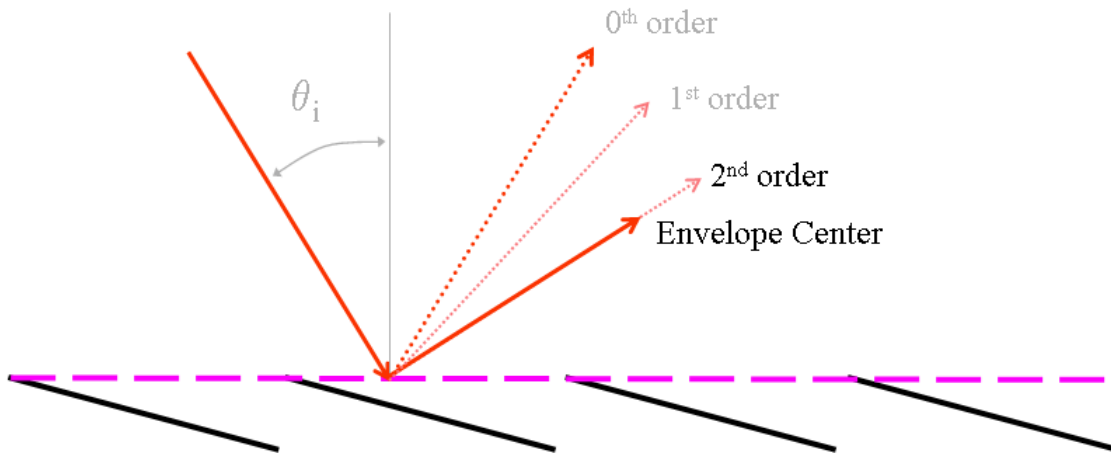


Figure 2-3. Blaze Condition (2<sup>nd</sup> Order)

The location of the 0<sup>th</sup> order depends only on the incident angle but all other orders depend on incident angle, grating pitch and wavelength. Similarly the location of the Sinc envelope peak is only dependent on the incident angle and the tilt of the groove faces, but the nulls of the envelope are dependent on the width of the slit and wavelength. The consequence is that for all  $m \neq 0$  a given order is only blazed for one wavelength.

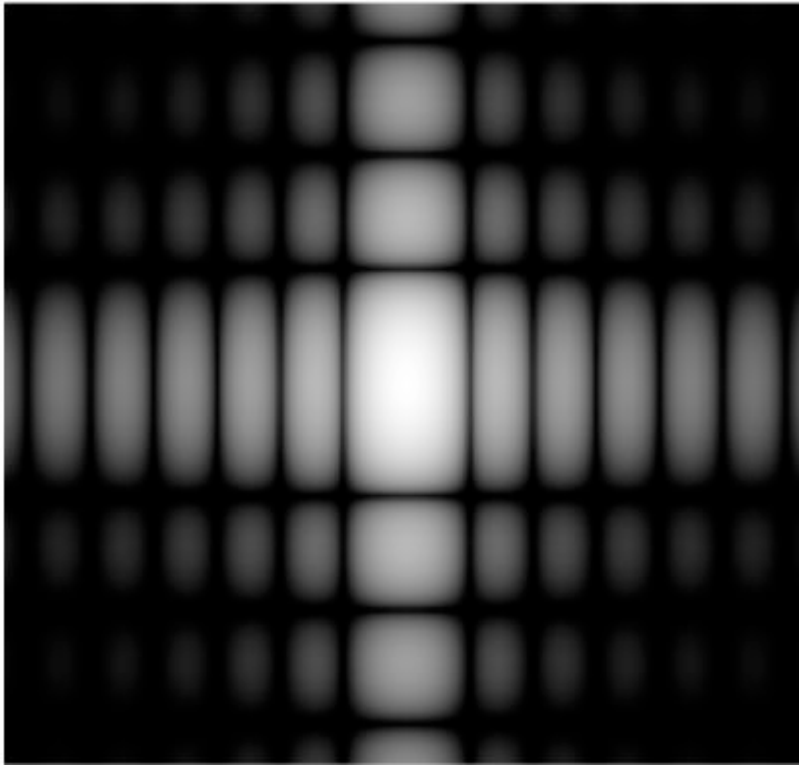
Notice that only the 0<sup>th</sup> order and the envelope peak moves geometrically with changes in incident angle. All other orders are equally spaced from 0<sup>th</sup> order in the mapped space. This means that as we change the incident angle, if the groove tilt is not 0 then the non-zero orders move relative to the Sinc envelope peak. Therefore, in a “non-blaze” arrangement, changing the incident angle such that, when possible, one of the orders lines up with the Sinc envelope peak produces a “blaze” condition.

## 2.4 Extending to Two Dimensional Gratings

Armed with the understanding of 1D grating diffraction we can extend this same understanding to two dimensions. We restrict our consideration to a grating with two orthogonal groove systems. Let the new dimensions be  $a_x$  and  $a_y$  for the face dimensions (mirror) and  $d_x$  and  $d_y$  for the grating pitches.

Now, orders are no longer lines, but rather, since the orders are constrained in two dimensions to particular directions the orders become *dots* on our mapped space. These orders are located at  $\left[ m \frac{\lambda}{d_x}, n \frac{\lambda}{d_y} \right]$  with the

(0,0) order at the specular grating reflection and a  $\text{Sinc}^2 \left[ \pi \frac{a_x}{\lambda} (x - x_i) \right] \text{Sinc}^2 \left[ \pi \frac{a_y}{\lambda} (y - y_i) \right]$  envelope centered on the specular reflection of the faces. A link showing a 2D (no tilt) pattern can be found at: [2D Grating](#)

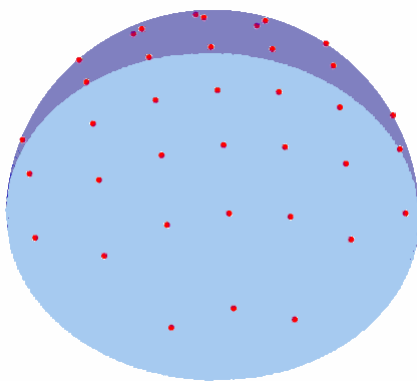


**Figure 2-4. 2D Sinc envelope (grayscale)**

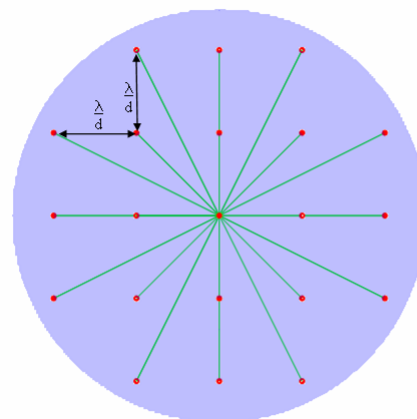
As before all the light that is incident on the array must be accounted for. Some is lost in the fill factor, but the remaining light must go into the real space. As in the 1D case we can renormalize to determine the light going into each order for a given set of geometries, wavelength and incident angle.

**2.5 The DLP® DMD as a Two Dimensional Grating**

DMDs employ square mirrors so that  $a_x = a_y$  and  $d_x = d_y$  so from here on we only refer to “a” and “d”. Furthermore, the mirror tilts +/-  $\theta_{\text{tilt}}$  about an axis that runs diagonally on the pixel. The result is that the only orders the envelope can be centered on lie along the line of the  $m = n$  orders.



**Figure 2-5. 3D Hemisphere View Of Orders**



**Figure 2-6. View of Orders From Above (mapped Space)**

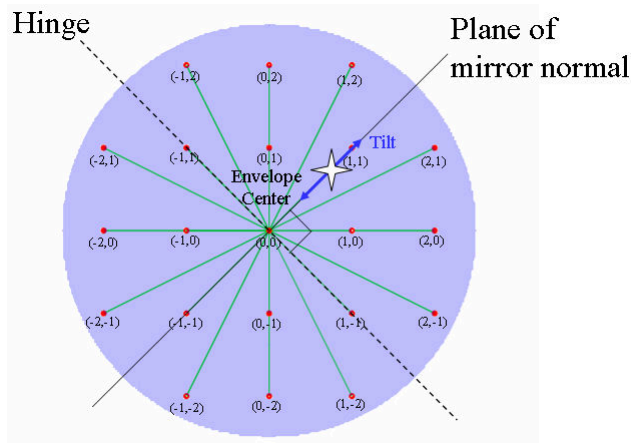


Figure 2-7. View of Numbered Orders And Envelope Center for a DMD

The objective then, for most applications, is to arrange the geometries so that for the wavelength of interest the envelope center lines up with an order. For the DMD the pitch and mirror tilt are fixed. However, try moving the incident angle to arrange a blaze for a given (n,n) order. In the following illustration the (n,n) order is referred to simply as the n<sup>th</sup> order. The following illustration shows the relationship between incident angle, tilt angle and blaze.

Please notice that along this line  $x = y$  so that the Envelope function is falling off as  $\text{Sinc}^4$ . This means that when the DMD switches from on to off the intensity of the orders that were previously blazed have excellent extinction.

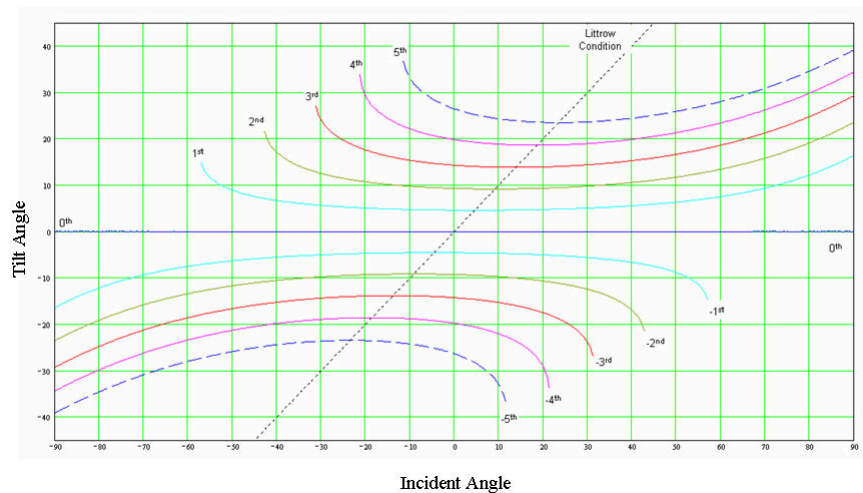


Figure 2-8. Relationship Between Incident, Tilt and Blaze

**Note**

The (n,n) order is referred to simply as the n<sup>th</sup> order in this diagram.

Notice the special blaze condition (represented by the dashed diagonal line) where the incident angle and the tilt angle are the same. This is known as the Littrow condition and is advantageous when using the same optics for inbound and outbound light.

## 2.6 Blaze Formulas

### Tilt Angle

A blaze chart can be created using the following formula:

$$\theta_{\text{tilt}}(n, \lambda, d, \theta_i) = \frac{1}{2} \left( \text{asin} \left( n \frac{\lambda}{d} \sqrt{2} - \sin(\theta_i) \right) + \theta_i \right) \quad (6)$$

where  $n$  is the integer order number for the  $(n,n)$  order,  $\lambda$  is the wavelength,  $d$  is the pixel pitch and  $\theta_i$  is the incident angle relative to the DMD array normal.

The blaze chart can be used to determine the range of incident angles that results in an  $n^{\text{th}}$  order blaze for a given tilt angle range. A blaze condition is not possible for all combinations of parameters. If no real answers to the equation exist, then a blaze condition is not possible for the given parameters.

### Anti-Blaze

Using values of  $n + \frac{1}{2}$  *anti-blaze* curves can also be plotted. An anti-blaze occurs when the envelope peak falls centered in the middle of four adjacent orders so that the four orders equally share the energy. These four orders combined have considerably less energy than a single blazed order.

### Incident Angle

DMDs have a prescribed tilt angle plus or minus a specified range use the following formula to calculate the incident angle ( $\theta_i$ ) for a blaze conditions:

$$\theta_i(n, \lambda, d, \theta_{\text{tilt}}) = \theta_{\text{tilt}} - \text{acos} \left( n \frac{\lambda}{d \sqrt{2}} \times \frac{1}{\sin(\theta_{\text{tilt}})} \right) \quad (7)$$

where  $n$  is the integer order number for the  $(n,n)$  order,  $\lambda$  is the wavelength,  $d$  is the pixel pitch and  $\theta_{\text{tilt}}$  is the specified tilt angle of the DMD pixels. If no real answers to the equation exist, then a blaze condition is not possible for the given parameters.

### Littrow Blaze

When the incident light and the reflected light traverse the same path this is known as the Littrow condition. When this condition also co-incides with a blaze condition a Littrow Blaze occurs. Therefore the incident angle and the tilt angle coincide which we label  $\theta_{\text{Littrow}}$ . Use this formula for Littrow Blaze:

$$\theta_{\text{Littrow}}(n, \lambda, d) = \text{asin} \left( \frac{1}{2} \left( n \frac{\lambda}{d} \sqrt{2} \right) \right) \quad (8)$$

where  $n$  is the integer order number for the  $(n,n)$  order,  $\lambda$  is the wavelength, and  $d$  is the pixel pitch.



### 3 Advantages and Considerations

Using the DMD with coherent light result in diffraction and consequently these effects must be taken into account, but the diffraction also provides advantages in many applications. Some of these advantages are:

- At large wavelengths (IR):
  - The blaze condition is fairly insensitive to production variation in tilt angle.
  - The *on* and *off* state blaze orders are separated on the diagonal of the 2D Sinc envelope giving an excellent extinction ratio from *on* to *off*.
  - Because light is separated into discrete orders, optics can easily be made that gather only the order of interest.
- At small wavelength (UV):
  - Tuning can usually be accomplished by changing incident angle less than +/- 2 degrees
- If the input beam is collimated then the individual orders are also collimated (that is these orders retain the characteristics of the input beam).

There are also some special considerations when using the DMD with coherent light that are a result of the nature of diffraction:

- For a given wavelength and pixel pitch, orders are fixed in direction space by the incident angle alone (switching the mirrors does not move them).
- The intensity envelope of the orders is determined by the shape of the mirrors (square for the DMD) so that individual orders cannot be arbitrarily extinguished without affecting all the other orders.

### 4 Conclusion

The DLP® DMD is an attractive spatial light modulator for use with coherent light applications. The reflective nature of our device allows large amounts of light energy to be modulated with a modicum absorbed by the device.

Learn more about DLP DMD technology with the links in the following section.

### 5 References

- Texas Instruments, [Getting Started with DLP Technology](#)
- Texas Instruments, [Digital Micromirror Device Thermal Considerations Including Pulsed Optical Sources](#), application note
- Texas Instruments, [System Design Considerations Using TI DLP® Technology down to 400 nm](#), application note
- Texas Instruments, [DLP® Optical Design Guidelines](#)

### 6 Revision History

NOTE: Page numbers for previous revisions may differ from page numbers in the current version.

<b>Changes from Revision * (June 2013) to Revision A (August 2025)</b>	<b>Page</b>
• Added <i>Blaze Formulas</i> section.....	8
• Updated learn more links.....	9

## IMPORTANT NOTICE AND DISCLAIMER

TI PROVIDES TECHNICAL AND RELIABILITY DATA (INCLUDING DATA SHEETS), DESIGN RESOURCES (INCLUDING REFERENCE DESIGNS), APPLICATION OR OTHER DESIGN ADVICE, WEB TOOLS, SAFETY INFORMATION, AND OTHER RESOURCES "AS IS" AND WITH ALL FAULTS, AND DISCLAIMS ALL WARRANTIES, EXPRESS AND IMPLIED, INCLUDING WITHOUT LIMITATION ANY IMPLIED WARRANTIES OF MERCHANTABILITY, FITNESS FOR A PARTICULAR PURPOSE OR NON-INFRINGEMENT OF THIRD PARTY INTELLECTUAL PROPERTY RIGHTS.

These resources are intended for skilled developers designing with TI products. You are solely responsible for (1) selecting the appropriate TI products for your application, (2) designing, validating and testing your application, and (3) ensuring your application meets applicable standards, and any other safety, security, regulatory or other requirements.

These resources are subject to change without notice. TI grants you permission to use these resources only for development of an application that uses the TI products described in the resource. Other reproduction and display of these resources is prohibited. No license is granted to any other TI intellectual property right or to any third party intellectual property right. TI disclaims responsibility for, and you will fully indemnify TI and its representatives against, any claims, damages, costs, losses, and liabilities arising out of your use of these resources.

TI's products are provided subject to [TI's Terms of Sale](#) or other applicable terms available either on [ti.com](https://www.ti.com) or provided in conjunction with such TI products. TI's provision of these resources does not expand or otherwise alter TI's applicable warranties or warranty disclaimers for TI products.

TI objects to and rejects any additional or different terms you may have proposed.

Mailing Address: Texas Instruments, Post Office Box 655303, Dallas, Texas 75265

Copyright © 2025, Texas Instruments Incorporated