

TPS54228 Step-Down Converter Evaluation Module User's Guide



ABSTRACT

This user's guide contains information for the TPS54228 as well as support documentation for the TPS54228EVM-686 evaluation module. Included are the performance specifications, schematic, and the bill of materials of the TPS54228EVM-686.

Table of Contents

1 Introduction	2
2 Performance Specification Summary	2
3 Modifications	2
3.1 Output Voltage Setpoint	2
3.2 Output Filter and Closed-Loop Response	3
4 Test Setup and Results	3
4.1 Input/Output Connections	3
4.2 Start-Up Procedure	3
4.3 Efficiency	5
4.4 Load Regulation	6
4.5 Line Regulation	7
4.6 Load Transient Response	7
4.7 Output Voltage Ripple	8
4.8 Input Voltage Ripple	9
4.9 Start-Up	10
5 Board Layout	11
5.1 Layout	11
6 Schematic, Bill of Materials, and Reference	14
6.1 Schematic	14
6.2 Bill of Materials	14
6.3 Reference	14
7 Revision History	15

Trademarks

D-CAP2™ are trademarks of Texas Instruments.

All trademarks are the property of their respective owners.

1 Introduction

The TPS54228 is a single, adaptive on-time, D-CAP2™-mode, synchronous buck converter requiring a low, external component count. The D-CAP2™ control circuit is optimized for low-ESR output capacitors such as POSCAP, SP-CAP, or ceramic types and features fast transient response with no external compensation. The switching frequency is internally set at a nominal 700 kHz. The high-side and low-side switching MOSFETs are incorporated inside the TPS54228 package along with the gate drive circuitry. The low drain-to-source on resistance of the MOSFETs allows the TPS54228 to achieve high efficiencies and helps keep the junction temperature low at high-output currents. The TPS54228 also features auto-skip Eco-mode operation for improved light-load efficiency. The TPS54228 dc/dc synchronous converter is designed to provide up to a 2-A output from an input voltage source of 4.5 V to 18 V. The output voltage range is from 0.76 V to 7.0 V. Rated input voltage and output current range for the evaluation module are given in [Table 1-1](#).

The TPS54228EVM-686 evaluation module is a single, synchronous buck converter providing 1.05 V at 2 A from 4.5-V to 18-V input. This user's guide describes the TPS54228EVM-686 performance.

Table 1-1. Input Voltage and Output Current Summary

EVM	Input Voltage Range	Output Current Range
TPS54228EVM-686	$V_{IN} = 4.5 \text{ V to } 18 \text{ V}$	0 A to 2 A

2 Performance Specification Summary

A summary of the TPS54228EVM-686 performance specifications is provided in [Table 2-1](#). Specifications are given for an input voltage of $V_{IN} = 12 \text{ V}$ and an output voltage of 1.05 V, unless otherwise noted. The ambient temperature is 25°C for all measurement, unless otherwise noted.

Table 2-1. TPS54228EVM-686 Performance Specifications Summary

Specifications	Test Conditions	Min	Typ	Max	Unit
Input voltage range (V_{IN})		4.5	12	18	V
Output voltage			1.05		V
Operating frequency	$V_{IN} = 12 \text{ V}, I_O = 1 \text{ A}$		700		kHz
Output current range		0		2	A
Line regulation	$I_O = 1 \text{ A}$		+/- 0.22		%
Load regulation	$V_{IN} = 12 \text{ V}$		+0.85/- 0.02		%
Over current limit	$V_{IN} = 12 \text{ V}, L_O = 1.5 \mu\text{H}$	2.5	3.3	4.7	A
Output ripple voltage	$V_{IN} = 12 \text{ V}, I_O = 3 \text{ A}$		15		mV _{pp}
Maximum efficiency	$V_{IN} = 5 \text{ V}, I_O = 0.3 \text{ A}$		85.1		%

3 Modifications

These evaluation modules are designed to provide access to the features of the TPS54228. Some modifications can be made to this module.

3.1 Output Voltage Setpoint

To change the output voltage of the EVMs, it is necessary to change the value of resistor R1. Changing the value of R1 can change the output voltage above 0.765 V. The value of R1 for a specific output voltage can be calculated using [Equation 1](#).

For output voltage from 0.76 V to 7.0 V:

$$V_O = 0.765 \times \left(1 + \frac{R_1}{R_2} \right) \quad (1)$$

[Table 3-1](#) lists the R1 values for some common output voltages. For higher output voltages of 1.8 V or above, a feedforward capacitor (C4) may be required to improve phase margin. Pads for this component (C4) are

provided on the printed-circuit board. Note that the resistor values given in [Table 3-1](#) are standard values and not the exact value calculated using [Equation 1](#).

Table 3-1. Output Voltages

Output Voltage (V)	R1 (k Ω)	R2 (k Ω)	C4 (pF)	L1 (μ H)	C9, C10, C11 Total Capacitance (μ F)
1.0	6.81	22.1		1.5 - 2.2	22 - 68
1.05	8.25	22.1		1.5 - 2.2	22 - 68
1.2	12.7	22.1		2.2	22 - 68
1.5	21.5	22.1		2.2	22 - 68
1.8	30.1	22.1	5 - 22	3.3	22 - 68
2.5	49.9	22.1	5 - 22	3.3	22 - 68
3.3	73.2	22.1	5 - 22	3.3	22 - 68
5.0	124	22.1	5 - 22	4.7	22 - 68
6.5	165	22.1	5 - 22	4.7	22 - 68

3.2 Output Filter and Closed-Loop Response

The TPS54228 relies on the output filter characteristics to ensure stability of the control loop. The recommended output filter components for common output voltages are given in [Table 3-1](#). It may be possible for other output filter component values to provide acceptable closed-loop characteristics. R3 and TP4 are provided for convenience in breaking the control loop and measuring the closed-loop response.

4 Test Setup and Results

This section describes how to properly connect, set up, and use the TPS54228EVM-686. The section also includes test results typical for the evaluation modules and efficiency, output load regulation, output line regulation, load transient response, output voltage ripple, input voltage ripple, start-up, and switching frequency.

4.1 Input/Output Connections

The TPS54228EVM-686 is provided with input/output connectors and test points as shown in [Table 4-1](#). A power supply capable of supplying 2 A must be connected to J1 through a pair of 20 AWG wires. The load must be connected to J2 through a pair of 20 AWG wires. The maximum load current capability is 2 A. Wire lengths must be minimized to reduce losses in the wires. Test point TP1 provides a place to monitor the input voltages (V_{IN}) with TP2 providing a convenient ground reference. TP8 is used to monitor the output voltage with TP9 as the ground reference.

Table 4-1. Connection and Test Points

Reference Designator	Function
J1	V_{IN} (see Table 1-1 for V_{IN} range)
J2	V_{OUT} , 1.05 V at 3 A maximum.
JP1	EN control. Connect EN to OFF to disable, connect EN to ON to enable.
TP1	V_{IN} test point at V_{IN} connector.
TP2	GND test point at V_{IN} .
TP3	EN test point.
TP4	Loop response measurement test point.
TP5	VREG5 test point.
TP6	Switch node test point.
TP7	Analog ground test point.
TP8	Output voltage test point.
TP9	Ground test point at output connector.

4.2 Start-Up Procedure

1. Ensure that the jumper at JP1 (Enable control) is set from EN to OFF.

2. Apply appropriate V_{IN} voltage to VIN and PGND terminals at J1.
3. Move the jumper at JP1 (Enable control) to cover EN and ON. The EVM enables the output voltage.

4.3 Efficiency

Figure 4-1 shows the efficiency for the TPS54228EVM-686 at an ambient temperature of 25°C.

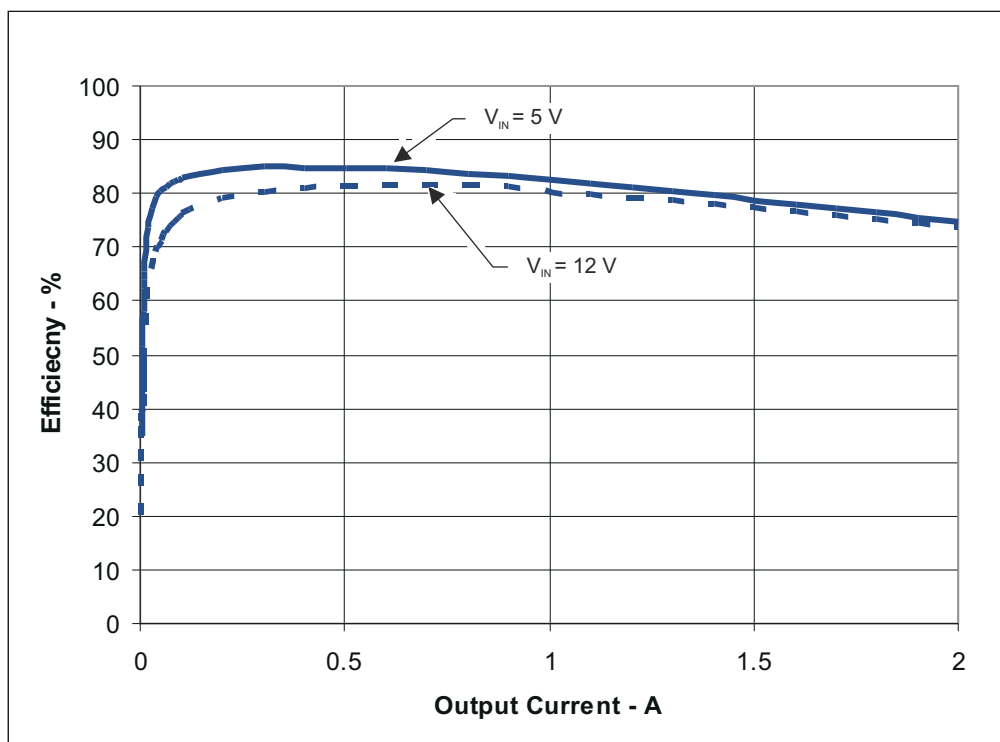


Figure 4-1. TPS54228EVM-686 Efficiency

Figure 4-2 shows the efficiency at light loads for the TPS54228EVM-686 at an ambient temperature of 25°C.

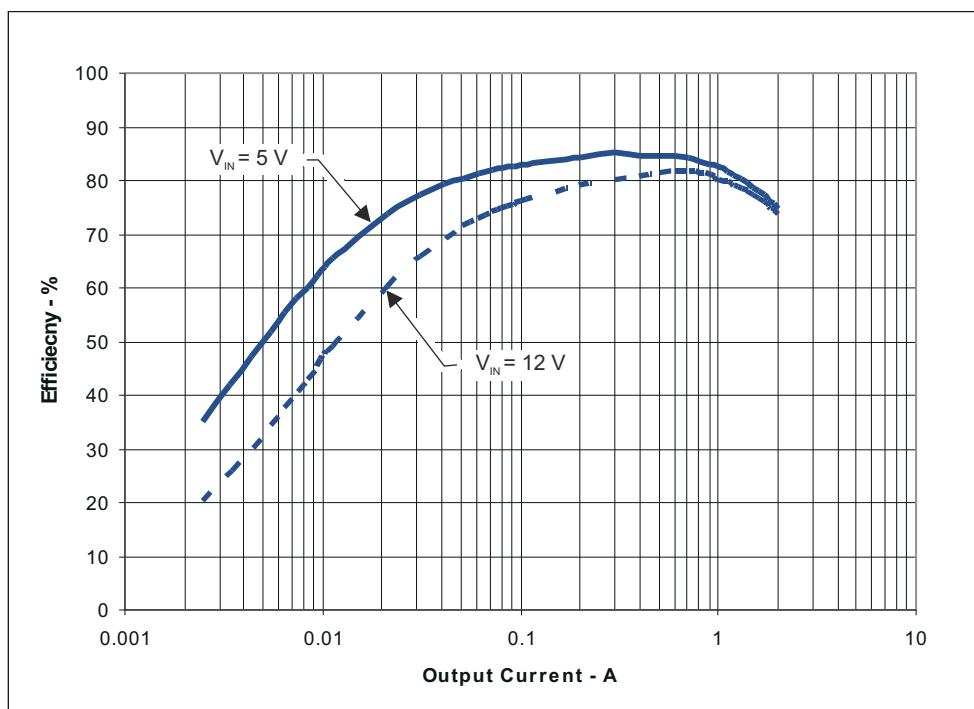


Figure 4-2. TPS54228EVM-686 Light-Load Efficiency

4.4 Load Regulation

The load regulation for the TPS54228EVM-686 is shown in Figure 4-3 and Figure 4-4 .

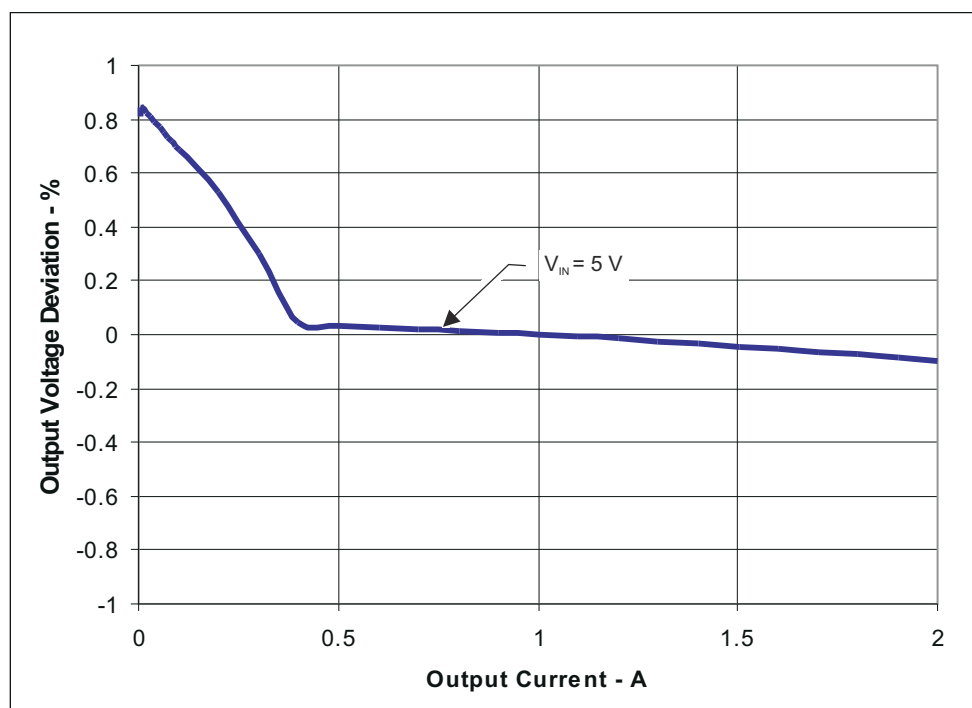


Figure 4-3. TPS54228EVM-686 Load Regulation, $V_{IN} = 5\text{ V}$

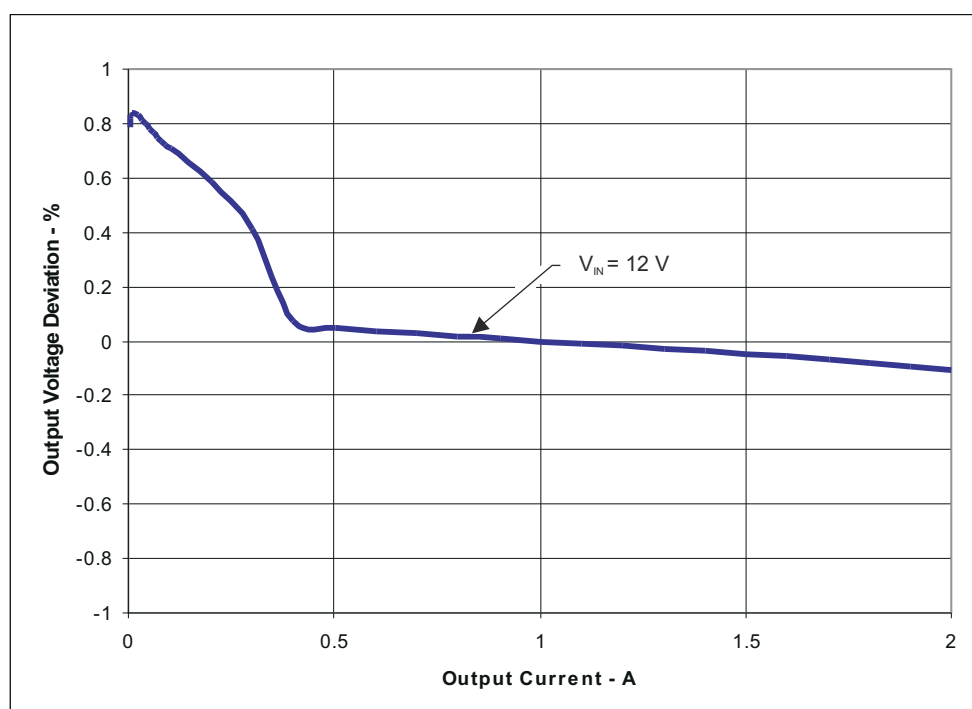


Figure 4-4. TPS54228EVM-686 Load Regulation, $V_{IN} = 12\text{ V}$

4.5 Line Regulation

The line regulation for the TPS54228EVM-686 is shown in Figure 4-5.

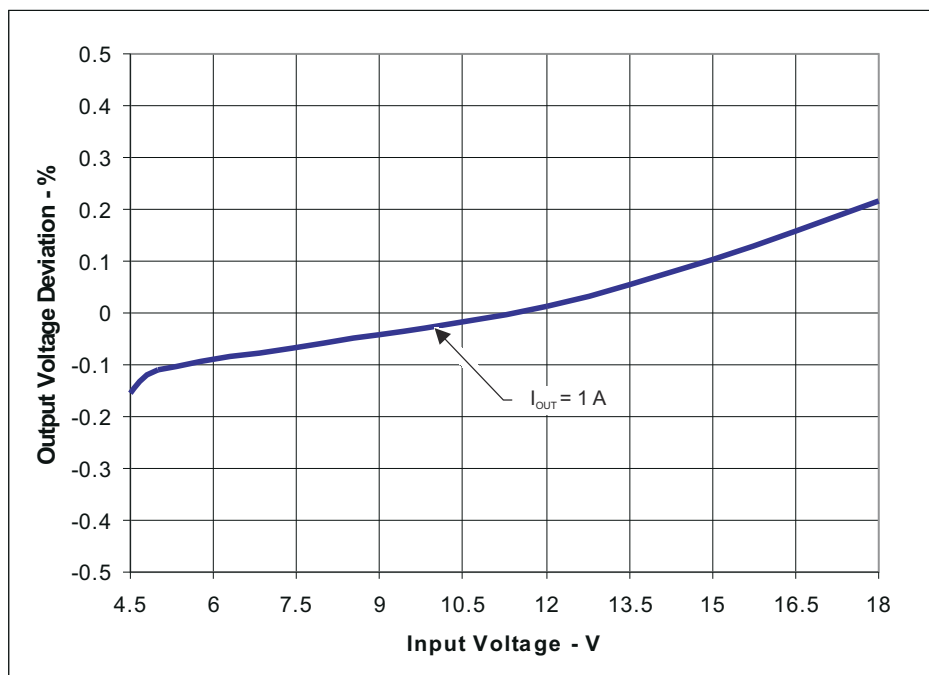


Figure 4-5. TPS54228EVM-686 Line Regulation

4.6 Load Transient Response

The TPS54228EVM-686 response to load transient is shown in Figure 4-6. The current step is from 0.5 A to 1.5 A. Total peak-to-peak voltage variation is as shown.

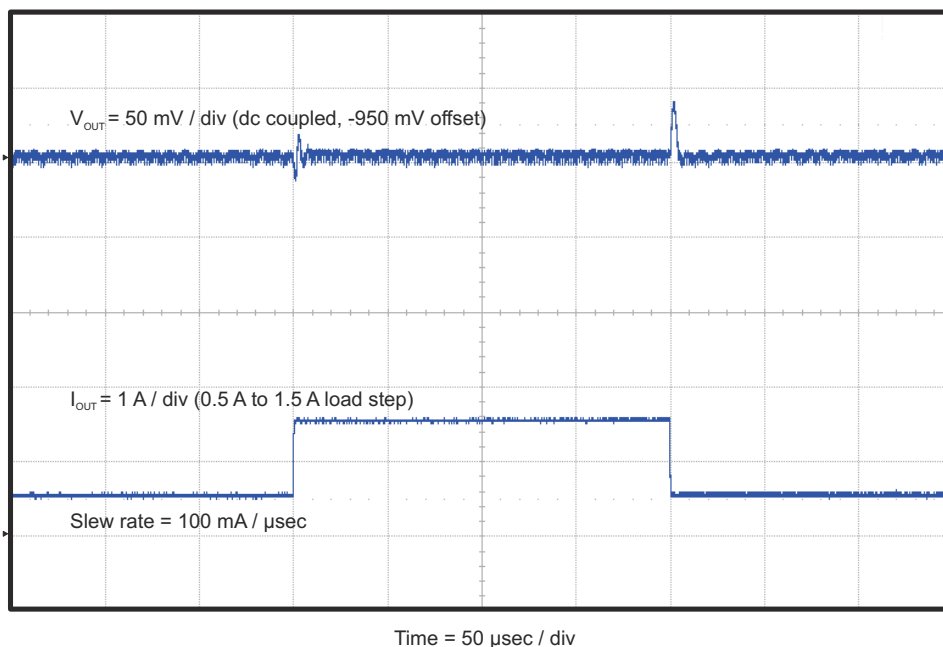


Figure 4-6. TPS54228EVM-686 Load Transient Response

4.7 Output Voltage Ripple

The TPS54228EVM-686 output voltage ripple is shown in [Figure 4-7](#). The output current is the rated full load of 2 A.

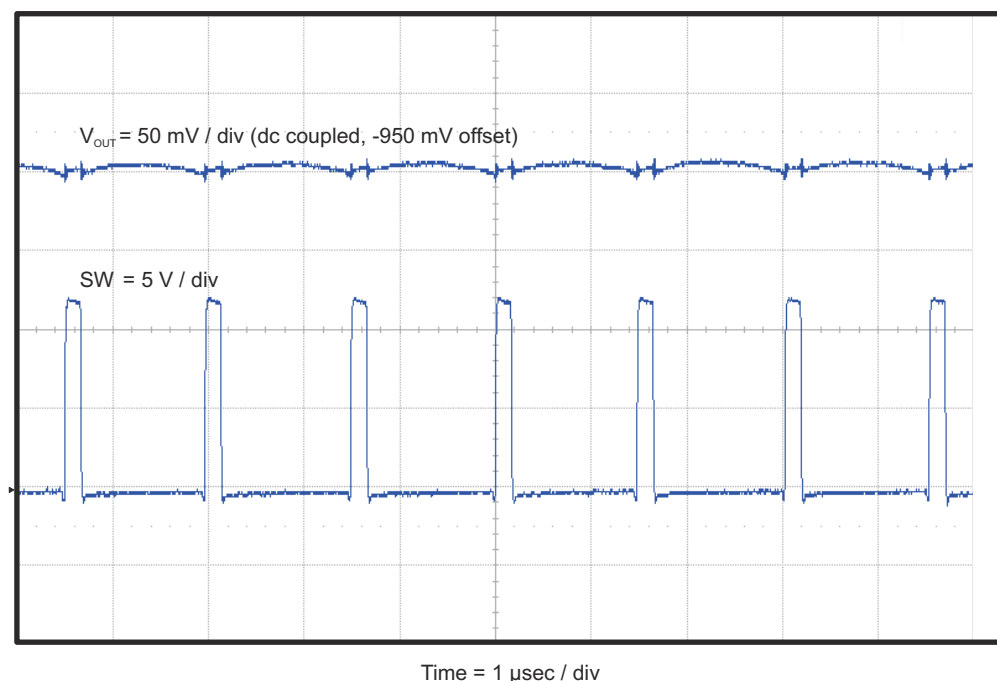


Figure 4-7. TPS54228EVM-686 Output Voltage Ripple

The TPS54228EVM-686 output voltage ripple during the start of Eco-mode operation is shown in [Figure 4-8](#). The output current is 30 mA.

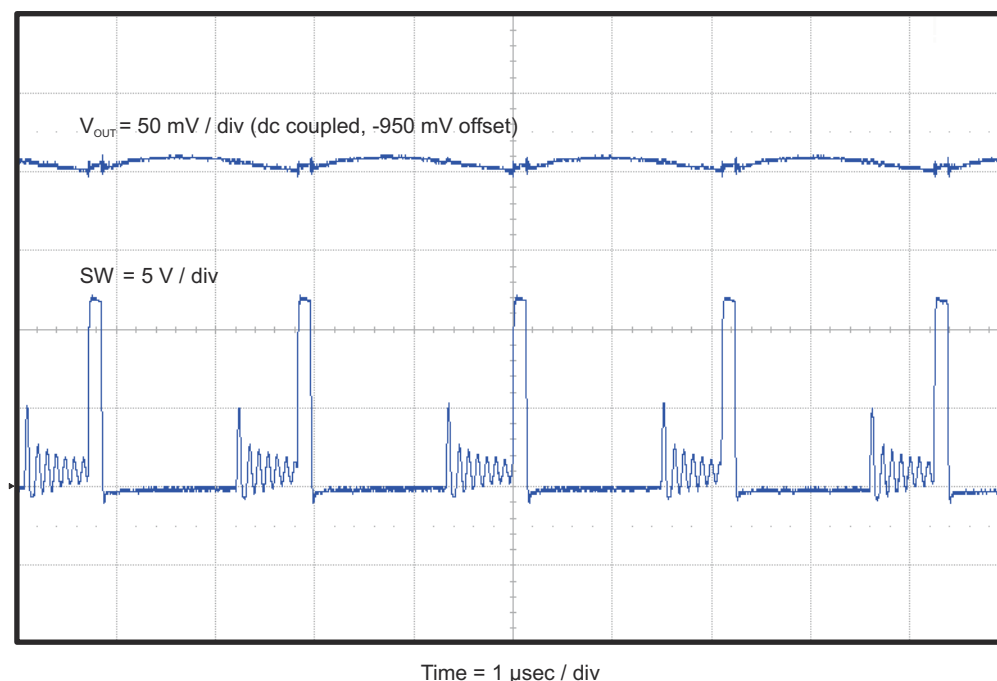


Figure 4-8. TPS54228EVM-686 Start of Eco-mode Output Voltage Ripple

The TPS54228EVM-686 output voltage ripple during Eco-mode operation is shown in [Figure 4-9](#). The output current is 0 mA.

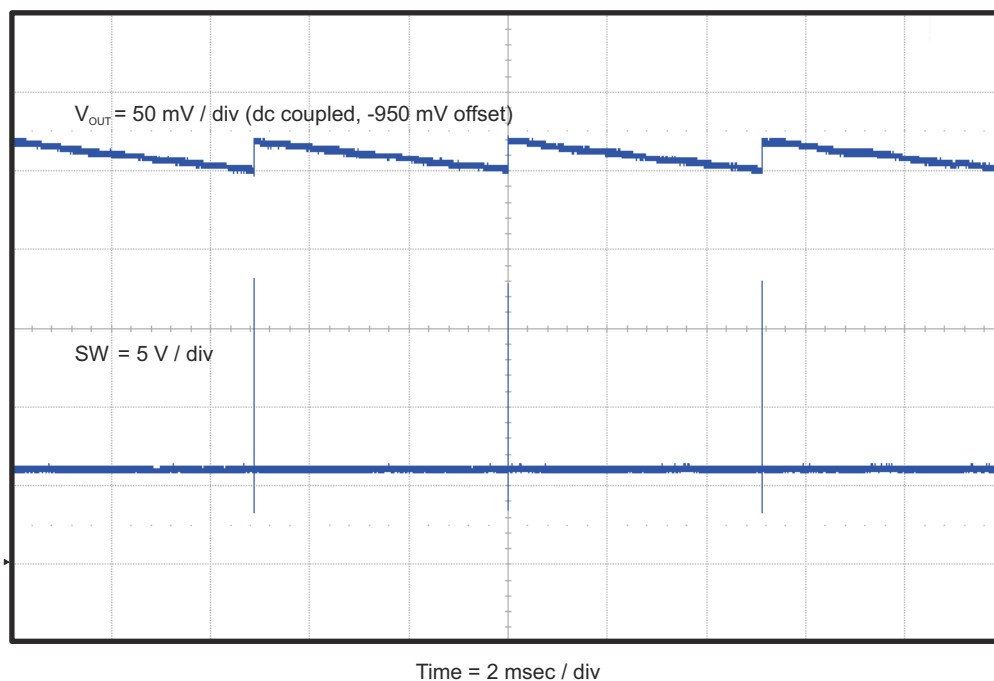


Figure 4-9. TPS54228EVM-686 Eco-mode Output Voltage Ripple

4.8 Input Voltage Ripple

The TPS54228EVM-686 input voltage ripple is shown in [Figure 4-10](#). The output current is the rated full load of 2 A.

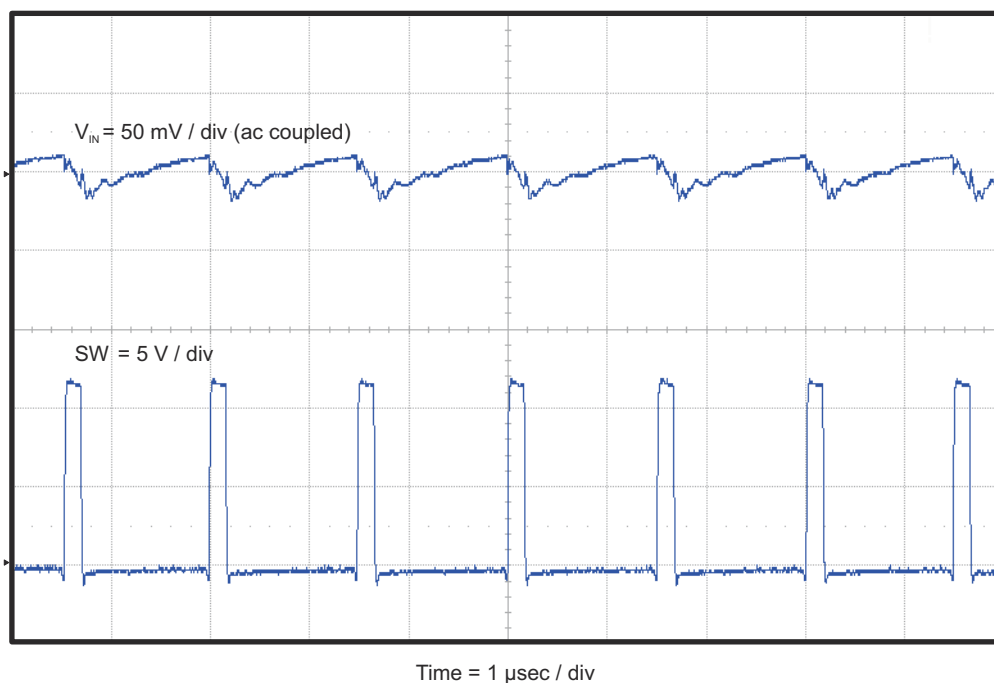


Figure 4-10. TPS54228EVM-686 Input Voltage Ripple

4.9 Start-Up

The TPS54228EVM-686 start-up waveform relative to V_{IN} is shown in Figure 4-11.

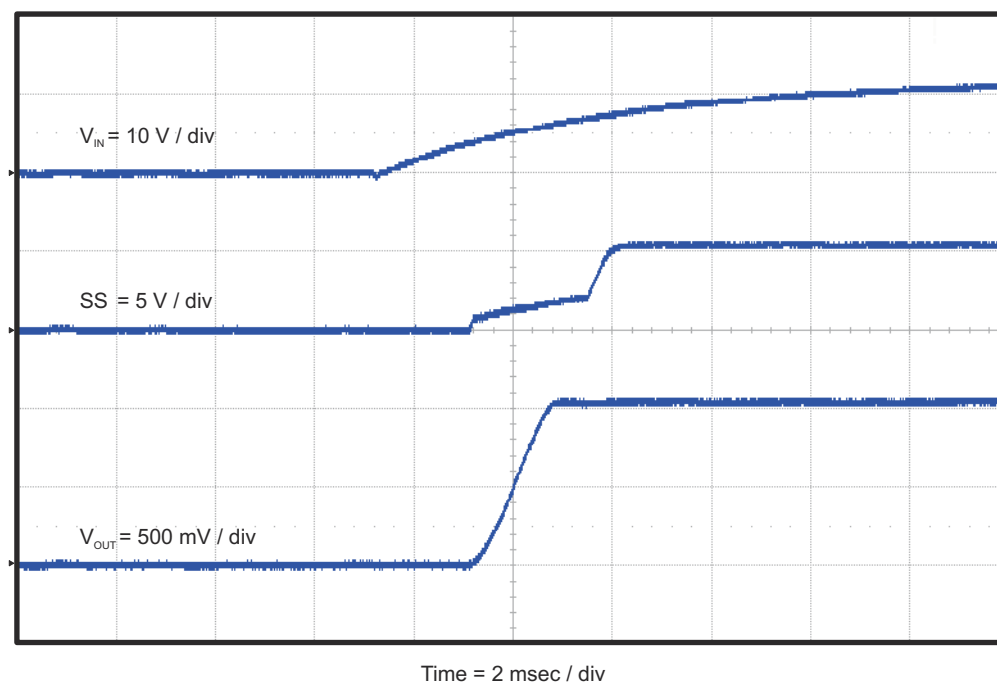


Figure 4-11. TPS54228EVM-686 Start-Up Relative to V_{IN}

The TPS54228EVM-686 start-up waveform relative to enable (EN) is shown in Figure 4-12.

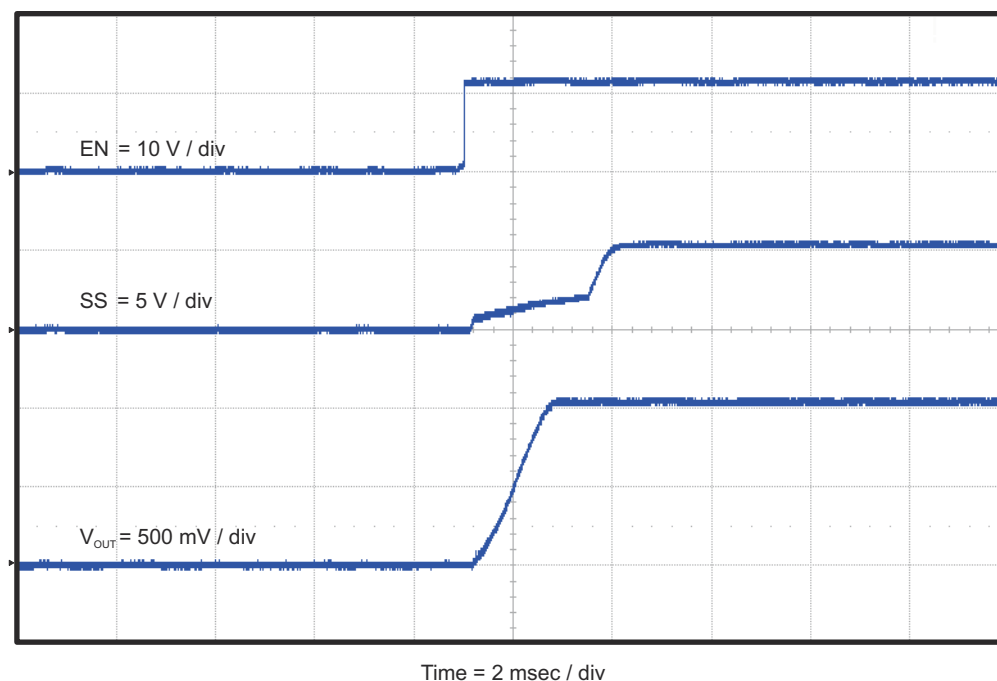


Figure 4-12. TPS54228EVM-686 Start-Up Relative to EN

5 Board Layout

This section provides description of the TPS54228EVM-686, board layout, and layer illustrations.

5.1 Layout

The board layout for the TPS54228EVM-686 is shown in [Figure 5-1](#) through [Figure 5-4](#). The top layer contains the main power traces for VIN, VO, and ground. Also on the top layer are connections for the pins of the TPS54228 and a large area filled with ground. Many of the signal traces also are located on the top side. The input decoupling capacitors are located as close to the IC as possible. The input and output connectors, test points, and all of the components are located on the top side. An analog ground (GND) area is provided on the top side. Analog ground (GND) and power ground (PGND) are connected at a single point on the top layer near C6. The bottom layer is primarily power ground but also has a trace to connect VIN to the enable jumper, a trace to connect VREG5 to TP5, and the feedback trace from VOUT to the voltage setpoint divider network.

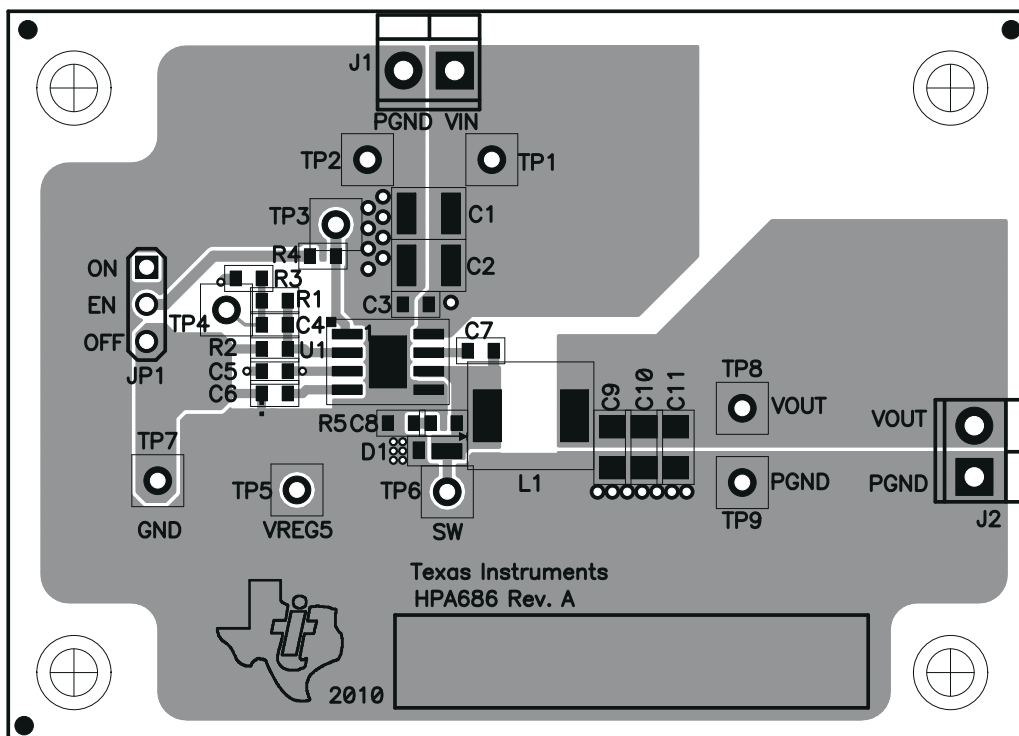


Figure 5-1. Top Assembly

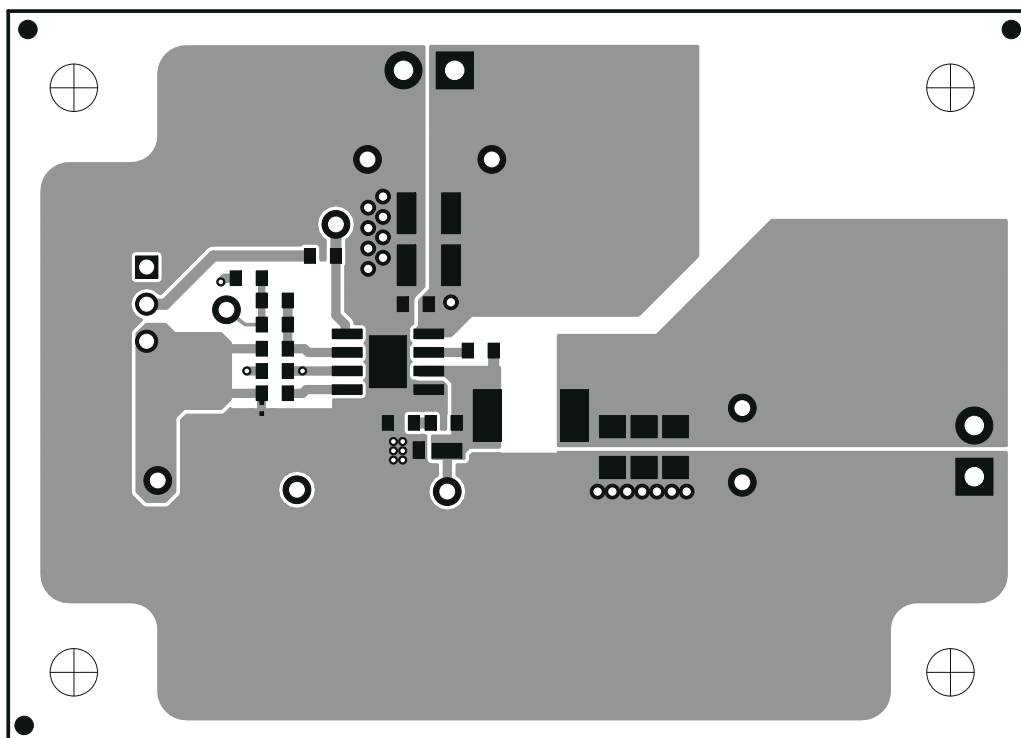


Figure 5-2. Top Layer

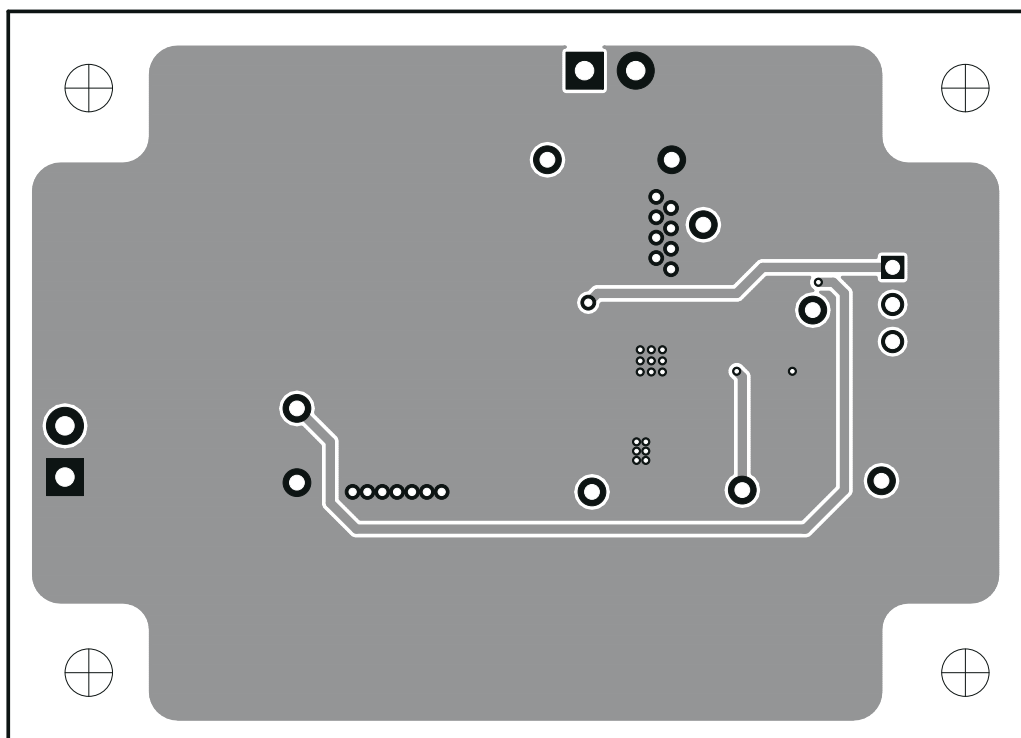


Figure 5-3. Bottom Layer

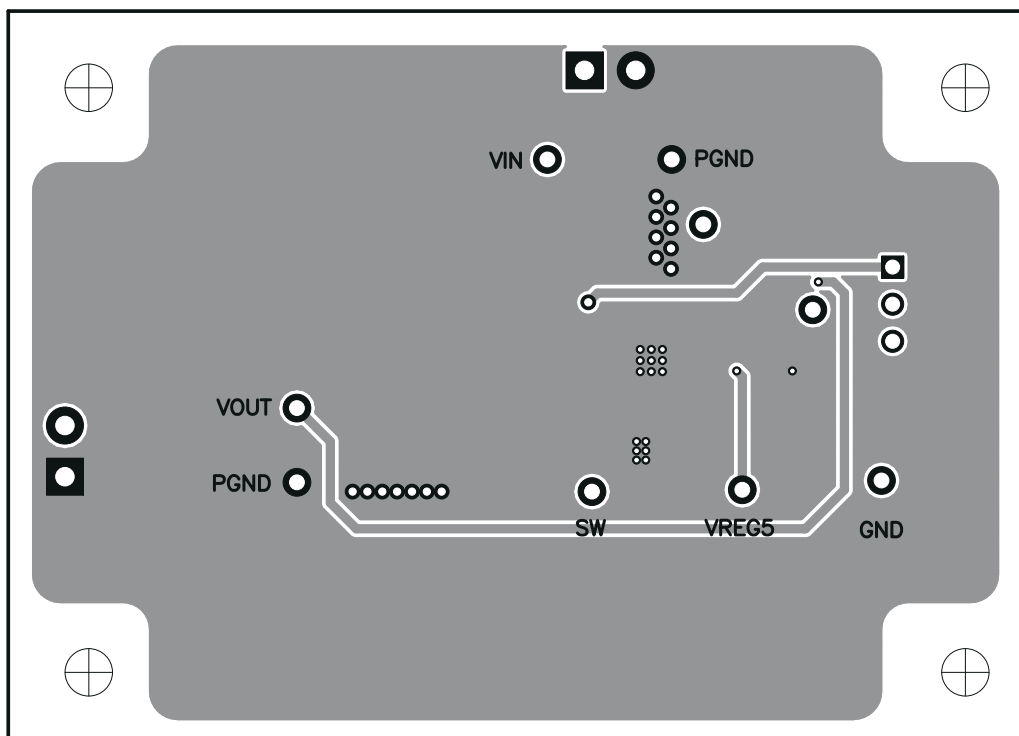


Figure 5-4. Bottom Assembly

7 Revision History

NOTE: Page numbers for previous revisions may differ from page numbers in the current version.

Changes from Revision * (May 2011) to Revision A (October 2021)	Page
• Updated the numbering format for tables, figures, and cross-references throughout the document.	2
• Updated the user's guide title.....	2

IMPORTANT NOTICE AND DISCLAIMER

TI PROVIDES TECHNICAL AND RELIABILITY DATA (INCLUDING DATASHEETS), DESIGN RESOURCES (INCLUDING REFERENCE DESIGNS), APPLICATION OR OTHER DESIGN ADVICE, WEB TOOLS, SAFETY INFORMATION, AND OTHER RESOURCES "AS IS" AND WITH ALL FAULTS, AND DISCLAIMS ALL WARRANTIES, EXPRESS AND IMPLIED, INCLUDING WITHOUT LIMITATION ANY IMPLIED WARRANTIES OF MERCHANTABILITY, FITNESS FOR A PARTICULAR PURPOSE OR NON-INFRINGEMENT OF THIRD PARTY INTELLECTUAL PROPERTY RIGHTS.

These resources are intended for skilled developers designing with TI products. You are solely responsible for (1) selecting the appropriate TI products for your application, (2) designing, validating and testing your application, and (3) ensuring your application meets applicable standards, and any other safety, security, regulatory or other requirements.

These resources are subject to change without notice. TI grants you permission to use these resources only for development of an application that uses the TI products described in the resource. Other reproduction and display of these resources is prohibited. No license is granted to any other TI intellectual property right or to any third party intellectual property right. TI disclaims responsibility for, and you fully indemnify TI and its representatives against any claims, damages, costs, losses, and liabilities arising out of your use of these resources.

TI's products are provided subject to [TI's Terms of Sale](#), [TI's General Quality Guidelines](#), or other applicable terms available either on [ti.com](https://www.ti.com) or provided in conjunction with such TI products. TI's provision of these resources does not expand or otherwise alter TI's applicable warranties or warranty disclaimers for TI products. Unless TI explicitly designates a product as custom or customer-specified, TI products are standard, catalog, general purpose devices.

TI objects to and rejects any additional or different terms you may propose.

Copyright © 2026, Texas Instruments Incorporated

Last updated 10/2025