

# TPS92410EVM-001 Offline LED Driver Evaluation Module

## User's Guide



Literature Number: SLVUA49

April 2014

---



---



---

<b>1</b>	<b>Introduction</b> .....	<b>4</b>
<b>2</b>	<b>Warnings and Cautions</b> .....	<b>4</b>
<b>3</b>	<b>Description</b> .....	<b>5</b>
	3.1 Typical Applications.....	5
	3.2 Connector Descriptions .....	5
<b>4</b>	<b>Electrical Performance Specifications</b> .....	<b>6</b>
<b>5</b>	<b>TPS92410EVM-001 Schematic</b> .....	<b>7</b>
<b>6</b>	<b>Performance Data and Typical Characteristic Curves</b> .....	<b>8</b>
	6.1 Power Factor.....	8
	6.2 Line Regulation .....	8
	6.3 Input Voltage and Input Current.....	9
	6.4 Linear Regulator Drain Voltage and Input Current.....	9
	6.5 Output Current .....	10
	6.6 Drain Overvoltage (DOV) Event (80-V Stack Shorted then Released).....	10
	6.7 Triac Dimming Waveforms .....	11
	6.8 EMI Performance .....	14
<b>7</b>	<b>TPS92410EVM-001 PCB Layout</b> .....	<b>15</b>
<b>8</b>	<b>Bill of Materials</b> .....	<b>16</b>

## List of Figures

1	TPS92410EVM-001 Schematic .....	7
2	Power Factor Versus Input Voltage .....	8
3	Input (Linear Regulator) Current Versus Input Voltage .....	8
4	Input Voltage (Top) and Input Current (Bottom) .....	9
5	Drain Voltage (Top) and Input Current (Bottom).....	9
6	80-V Stack (Top), 40-V Stack (Middle), and 20-V Stack (Bottom).....	10
7	Drain Voltage (Top), DOV Pin Voltage (Middle), and Input Current (Bottom).....	10
8	Forward Phase Triac Dimming: Rectified Input Voltage (Top) and Input Current (Bottom) – Full.....	11
9	Forward Phase Triac Dimming: Rectified Input Voltage (Top) and Input Current (Bottom) – Half .....	11
10	Forward Phase Triac Dimming: Rectified Input Voltage (Top) and Input Current (Bottom) – Low .....	12
11	Reverse Phase Dimming: Rectified Input Voltage (Top) and Input Current (Bottom) – Full .....	12
12	Reverse Phase Dimming: Rectified Input Voltage (Top) and Input Current (Bottom) – Half.....	13
13	Reverse Phase Dimming: Rectified Input Voltage (Top) and Input Current (Bottom) – Low.....	13
14	Conducted EMI Performance .....	14
15	Top Layer and Top Overlay (Top View) .....	15
16	Bottom Layer and Bottom Overlay (Bottom View) .....	15

## List of Tables

1	TPS92410EVM-001 Electrical Performance Specifications .....	6
2	TPS92410EVM-001 Bill of Materials.....	16

# **Switch Controlled Direct Drive Linear Controller for Offline LED Drivers**

## **1 Introduction**

The TPS92410EVM-001 evaluation module (EVM) helps designers evaluate the operation and performance of the TPS92410 direct drive linear controller designed for use with the TPS92411 in offline LED-drive applications. The TPS92410 is designed to control the drive of high-brightness light emitting diodes (LEDs) and features a wide input voltage range (9.5 V to 400 V), thermal foldback, analog dimming capability, and linear FET overvoltage protection.

## **2 Warnings and Cautions**

Observe the following precautions when using the TPS92410EVM-001.

### **WARNING**



**High Voltage**

### **CAUTION**



**DO NOT STARE DIRECTLY INTO THE LED LIGHT SOURCE.**

Intense light sources have a high secondary blinding effect. A temporary reduction in visual acuity and afterimages can occur, leading to irritation, annoyance, visual impairment, and even accidents – depending on the situation. Always consider the use of light filtering and darkening protective eyewear and be fully aware of surrounding laboratory type set-ups when viewing intense light sources to minimize or eliminate such risks in order to avoid accidents related to temporary blindness.

### **WARNING**



**Do not stare at the operating LED – (Risk Group 1 (RG1)). See IEC62471-1 ed1.0:2009-08 for risk group definitions.**

### 3 Description

The TPS92410EVM-001 provides a high-brightness LED driver based on the TPS92410 in conjunction with the TPS92411 direct drive switch. It is designed to operate with an input voltage in the range of 90 VAC to 135 VAC with a 120 VAC nominal input voltage. This input voltage range is typical for offline applications. The EVM is set up for a default input current of 58 mA for 6.8 W total power and 3 LED voltage stacks of 20 V, 40 V, and 80 V. The TPS92410 helps provide high efficacy, good power factor, low THD, and flicker-free triac and phase dimming, due to its dimmer detect function that switches the input current mode to a DC level.

#### 3.1 Typical Applications

This converter design describes an application of the TPS92410 as an LED driver controller with the specifications listed in [Section 4](#). For applications with a different input voltage range or different output voltage range, refer to the TPS92410 datasheet ([SLUSBW9](#)) and TPS92411 datasheet ([SLUSBQ6](#)).

#### 3.2 Connector Descriptions

This section describes the connectors and test points on the EVM and how to properly connect, setup, and use the TPS92410EVM-001.

##### 3.2.1 J1

The screw down connector J1 is for the input voltage supply to the LED driver. The leads to the input supply should be twisted and kept as short as possible to minimize voltage drop, inductance, and EMI transmission. The input is not polarized. Line and neutral may be connected to either terminal.

##### 3.2.2 VPx, VSx, ISx

The test points VP1, VS1, IS1, VP2, VS2, IS2, VP3, VS3, and IS3 are for testing the different LED stack voltages and currents. For example, connect a voltmeter from VP1 to IS1 across the 1- $\Omega$  resistor, R1, to measure the current in the top (80 V) LED string (1 mV = 1 mA). Connect a voltmeter from VP1 to VS1 to measure the top stack voltage. The middle and lower stack currents and voltages can be measured in the same way using the test points labeled with 2 and 3, respectively.

##### 3.2.3 ADIM

The test point ADIM connects directly to the ADIM pin of the TPS92410. The voltage range is 0 V to 3 V. Applying a voltage between 1.5 V and 3 V allows the internal reference to take over, resulting in a 1.5-V reference at the CS pin. Applying a voltage below 1.5 V results in the applied voltage being the reference at the CS pin down to 50 mV. Below 50 mV, the linear regulator is disabled and the GDL pin is pulled to ground.

## 4 Electrical Performance Specifications

Table 1 contains the electrical performance specifications for the EVM.

**Table 1. TPS92410EVM-001 Electrical Performance Specifications**

Parameter	Test Conditions	MIN	TYP	MAX	Units
<b>Input Characteristics</b>					
Voltage range		90	120	135	VAC
Maximum input current			58		mA
<b>Output Characteristics</b>					
Output voltage, $V_{OUT}$	Upper LED stack		80		V
	Middle LED stack		40		
	Lower LED stack		20		
Flicker Index			0.03		
Output current ripple percent			12		%
Output current ripple	Each stack		23		mApp
Overvoltage protection level	Each individual TPS92410		100		V
Linear FET overvoltage protection level			51		V
<b>Systems Characteristics</b>					
Efficiency	Input voltage = 120 VAC, No triac dimmer		79.5		%
Power factor	Input voltage = 120 VAC, No triac dimmer		0.99		
THD	Input voltage = 120 VAC, No triac dimmer		7.5		%

## 5 TPS92410EVM-001 Schematic

Figure 1 illustrates the TPS92410EVM-001 schematic.

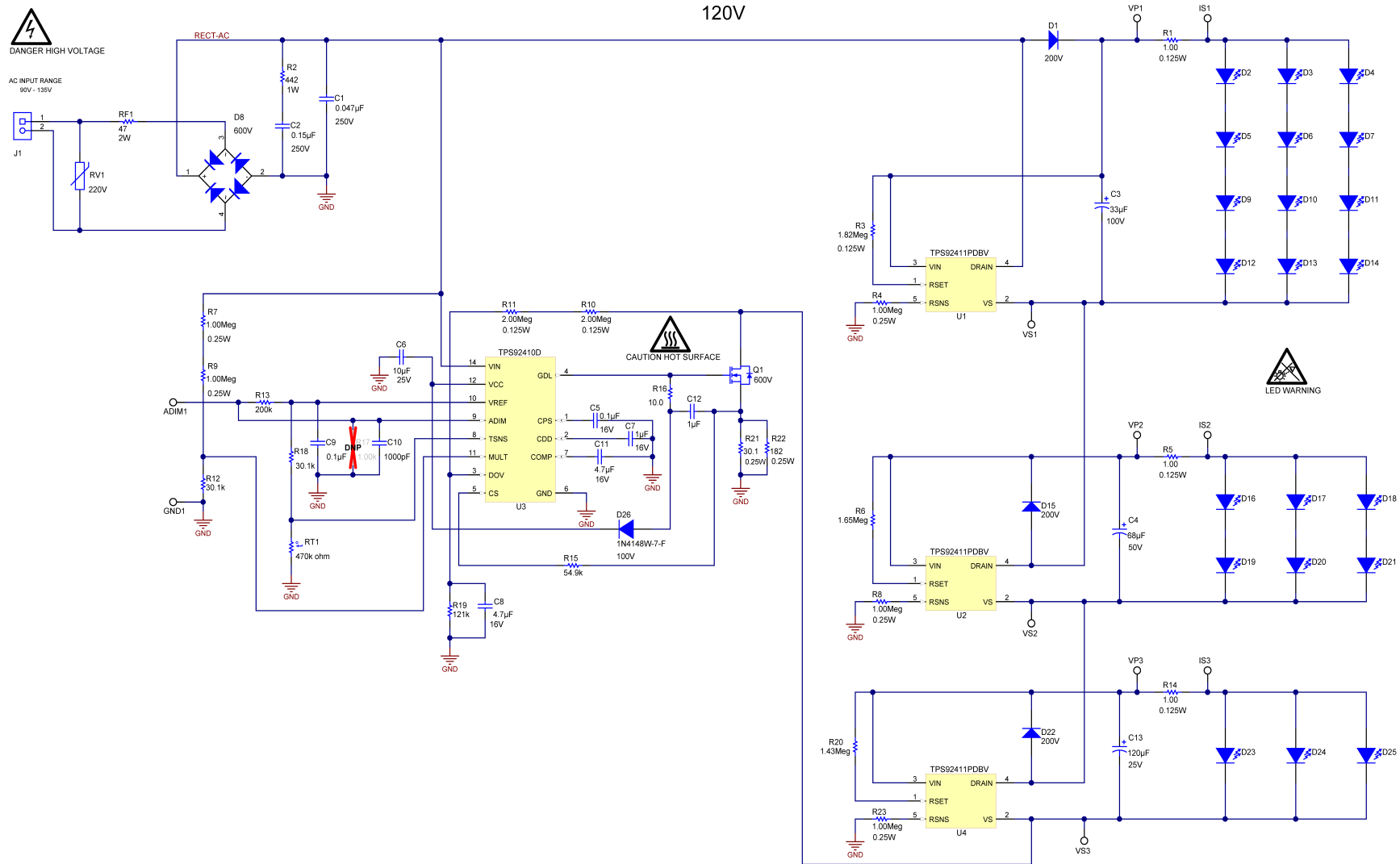


Figure 1. TPS92410EVM-001 Schematic

## 6 Performance Data and Typical Characteristic Curves

Figure 2 through Figure 13 present typical performance curves for the TPS92410EVM-001.

### 6.1 Power Factor

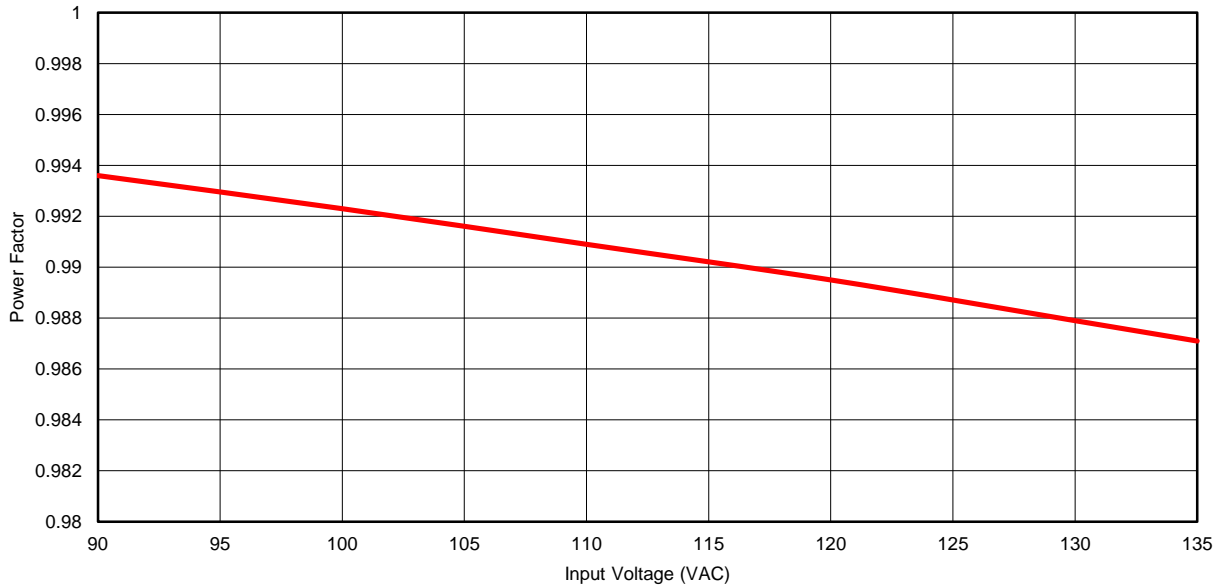


Figure 2. Power Factor Versus Input Voltage

### 6.2 Line Regulation

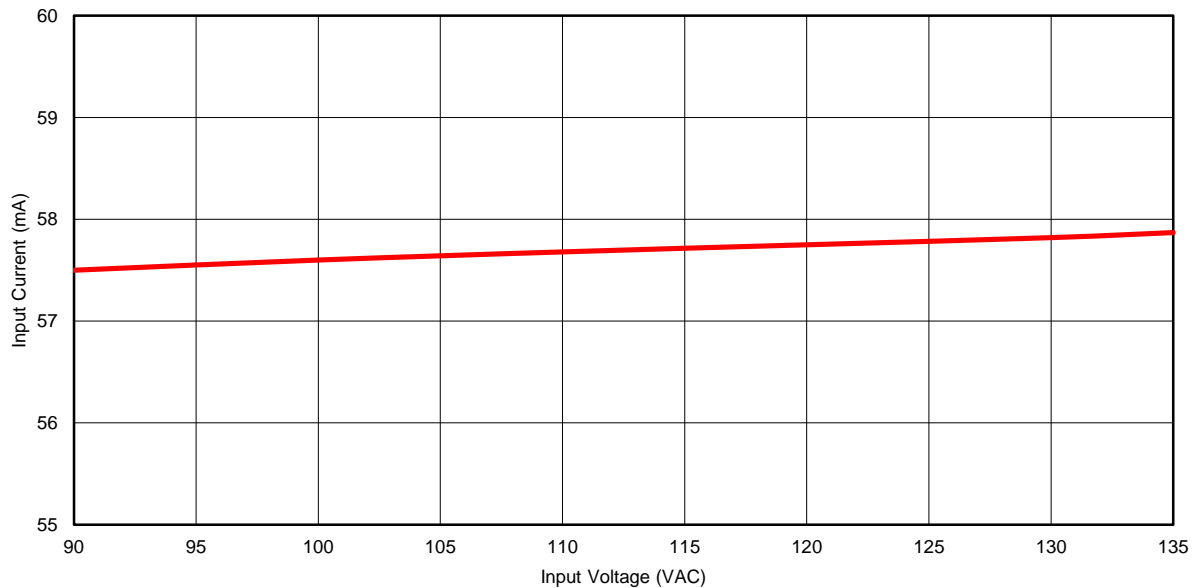


Figure 3. Input (Linear Regulator) Current Versus Input Voltage



### 6.3 Input Voltage and Input Current

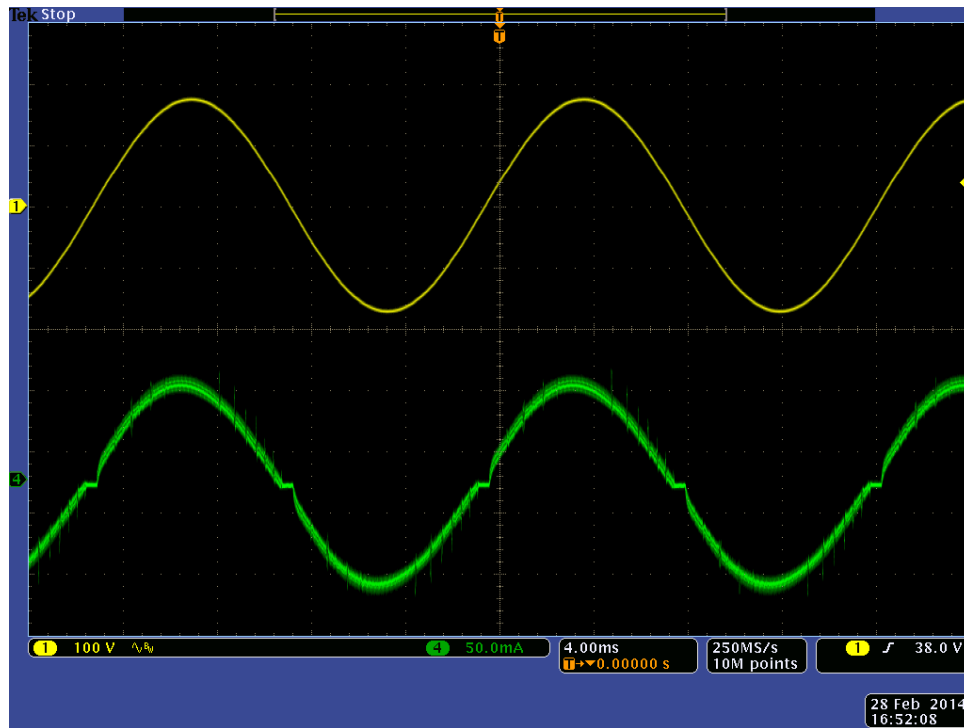


Figure 4. Input Voltage (Top) and Input Current (Bottom)

### 6.4 Linear Regulator Drain Voltage and Input Current

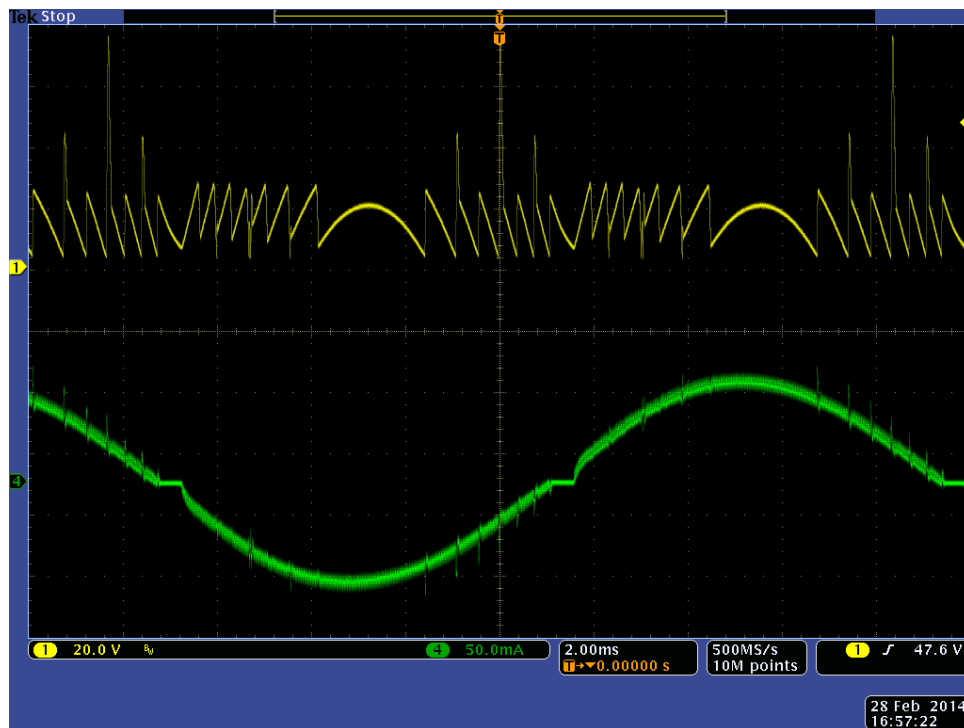


Figure 5. Drain Voltage (Top) and Input Current (Bottom)

### 6.5 Output Current



Figure 6. 80-V Stack (Top), 40-V Stack (Middle), and 20-V Stack (Bottom)

### 6.6 Drain Overvoltage (DOV) Event (80-V Stack Shorted then Released)

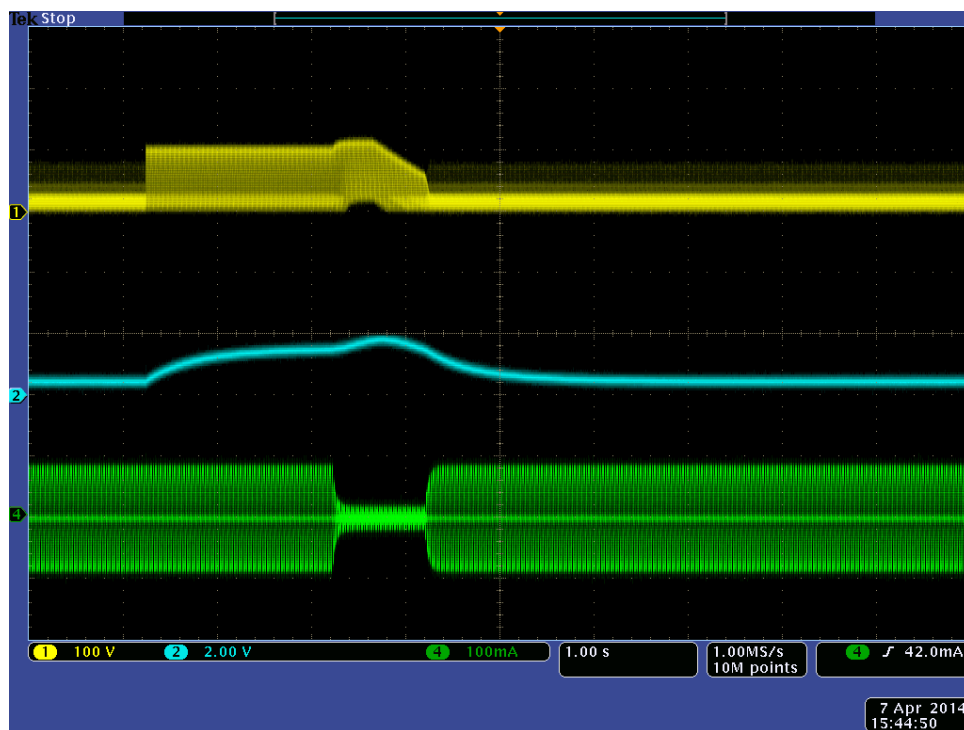


Figure 7. Drain Voltage (Top), DOV Pin Voltage (Middle), and Input Current (Bottom)

### 6.7 Triac Dimming Waveforms

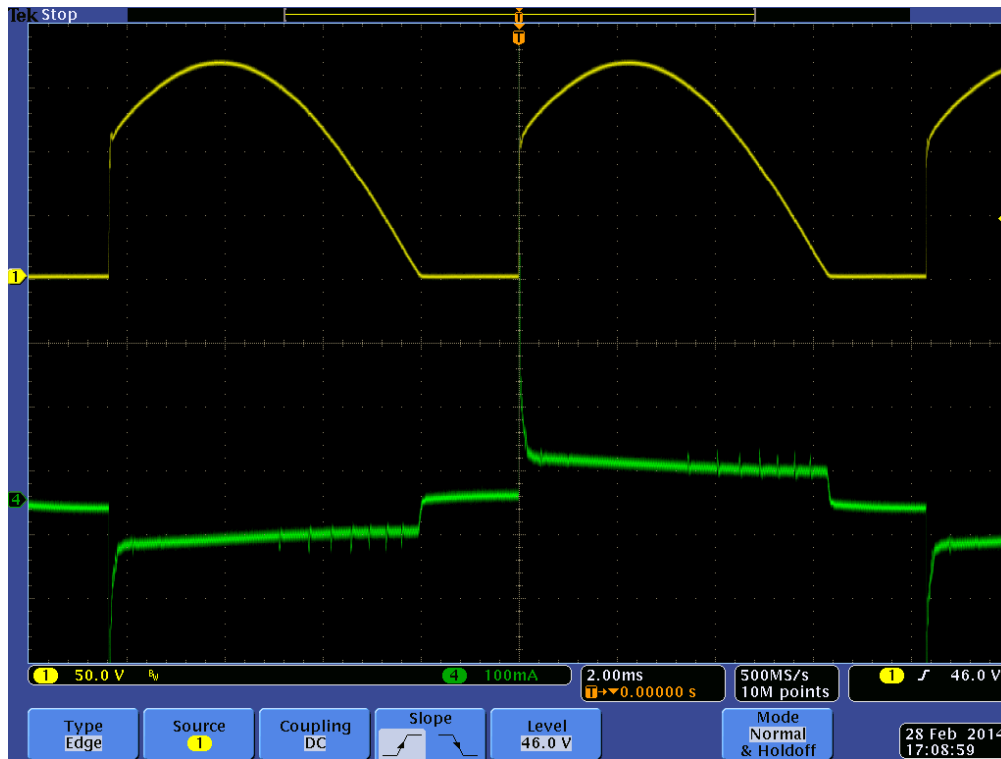


Figure 8. Forward Phase Triac Dimming: Rectified Input Voltage (Top) and Input Current (Bottom) – Full

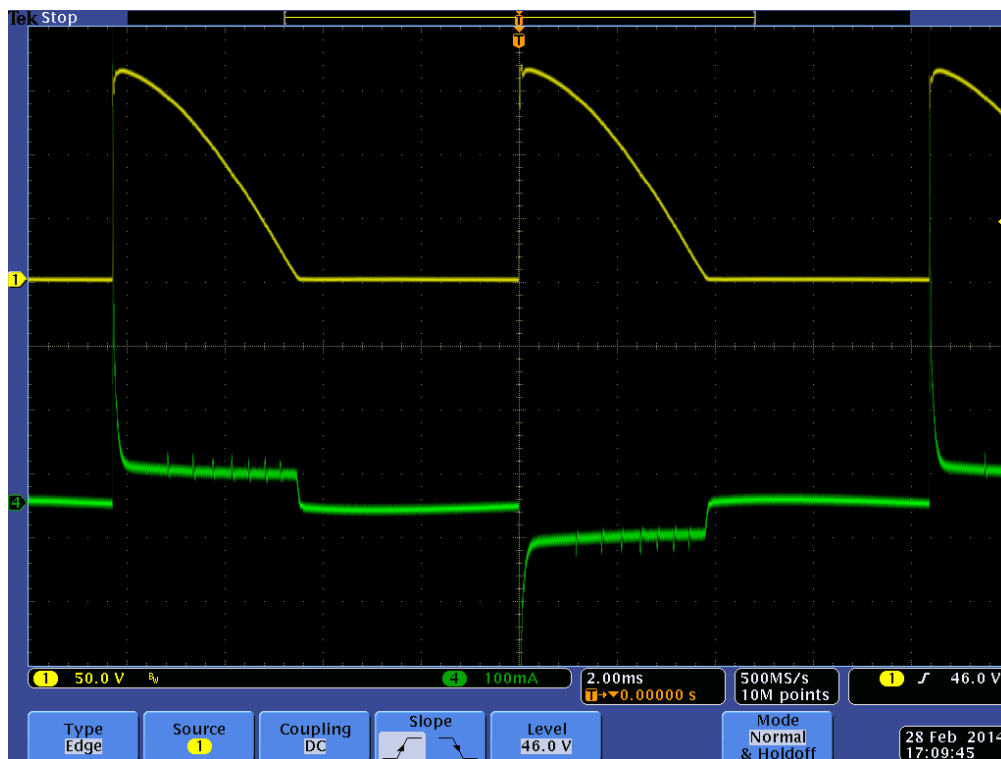


Figure 9. Forward Phase Triac Dimming: Rectified Input Voltage (Top) and Input Current (Bottom) – Half

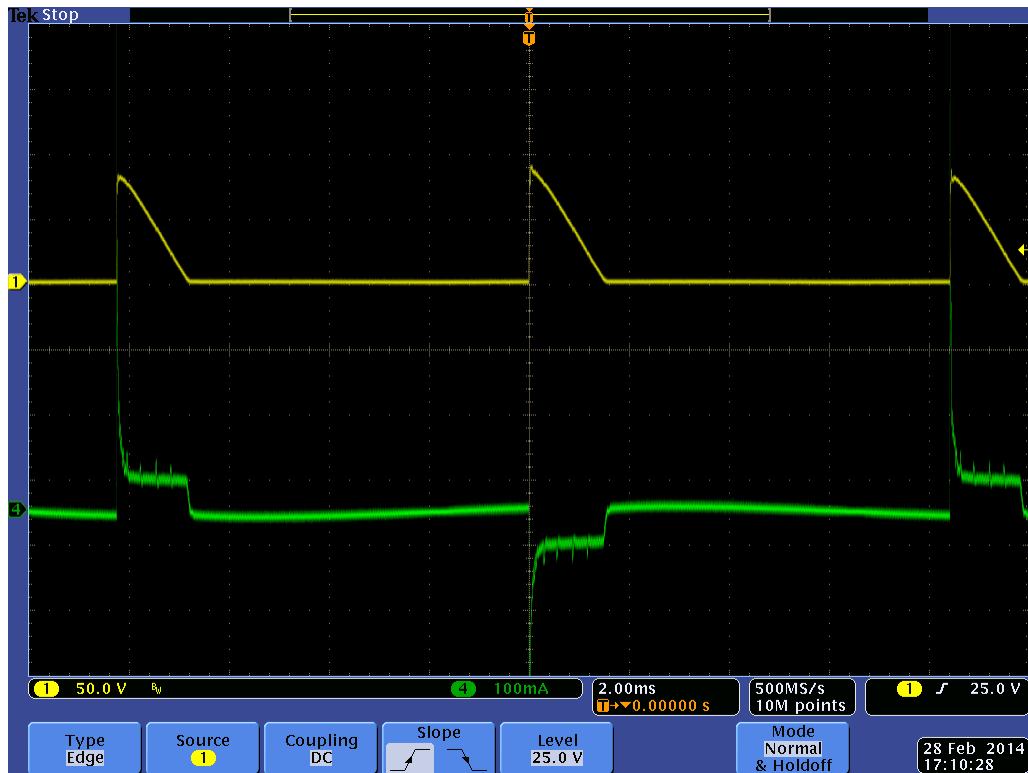


Figure 10. Forward Phase Triac Dimming: Rectified Input Voltage (Top) and Input Current (Bottom) – Low

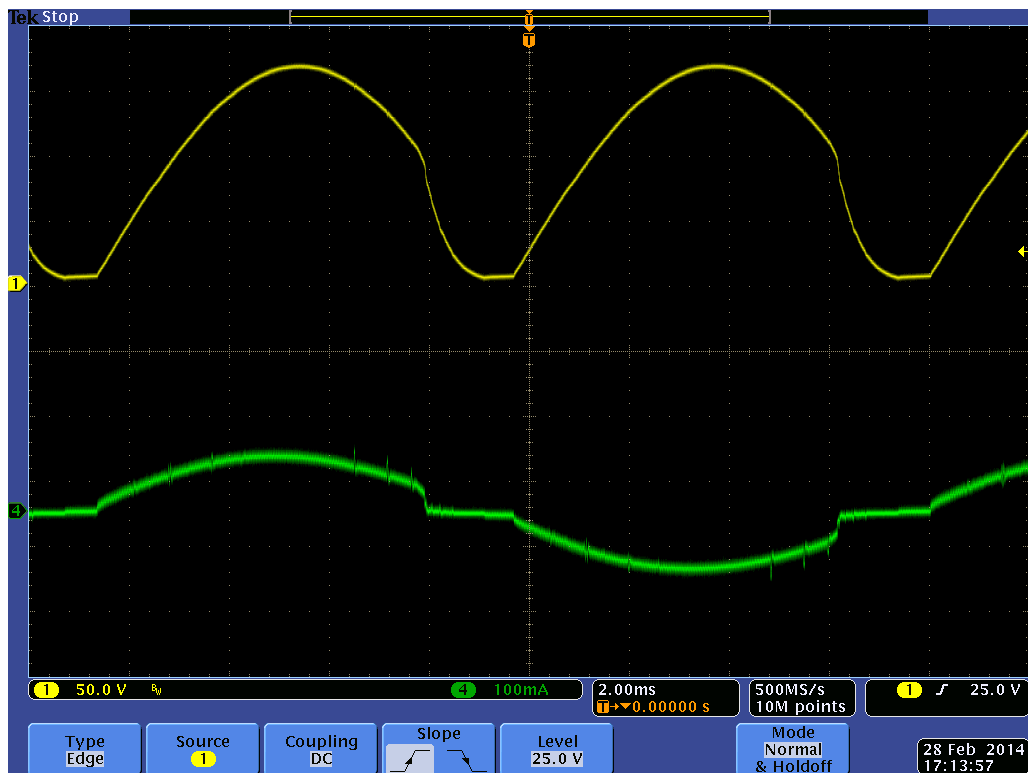


Figure 11. Reverse Phase Dimming: Rectified Input Voltage (Top) and Input Current (Bottom) – Full

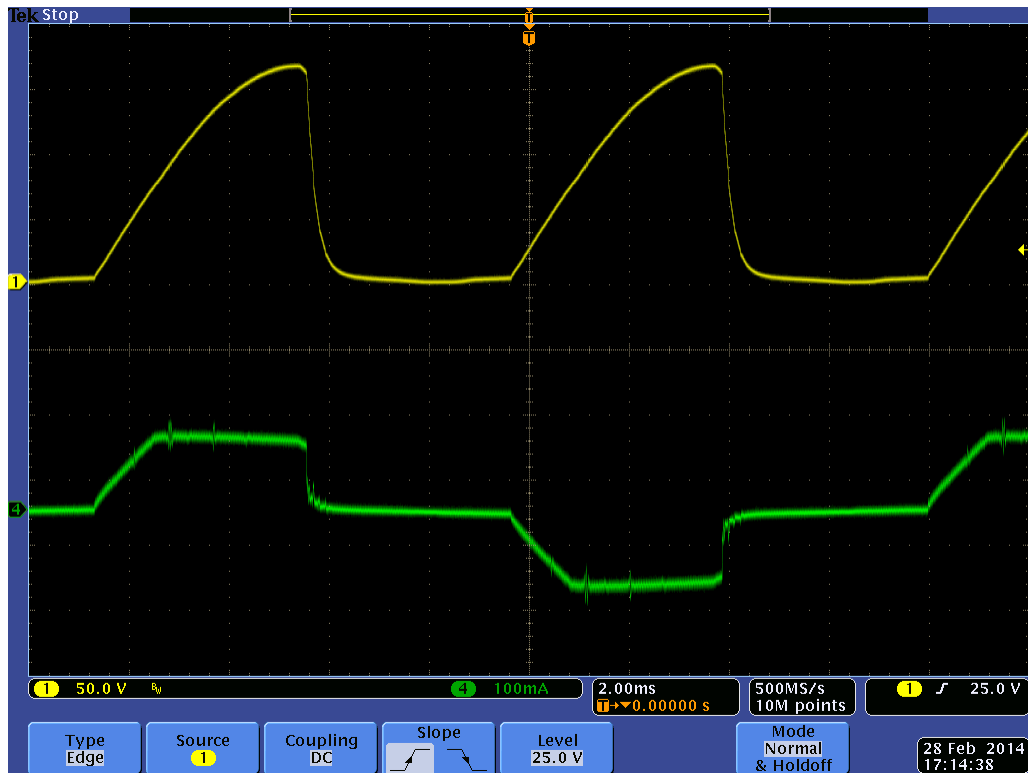


Figure 12. Reverse Phase Dimming: Rectified Input Voltage (Top) and Input Current (Bottom) – Half

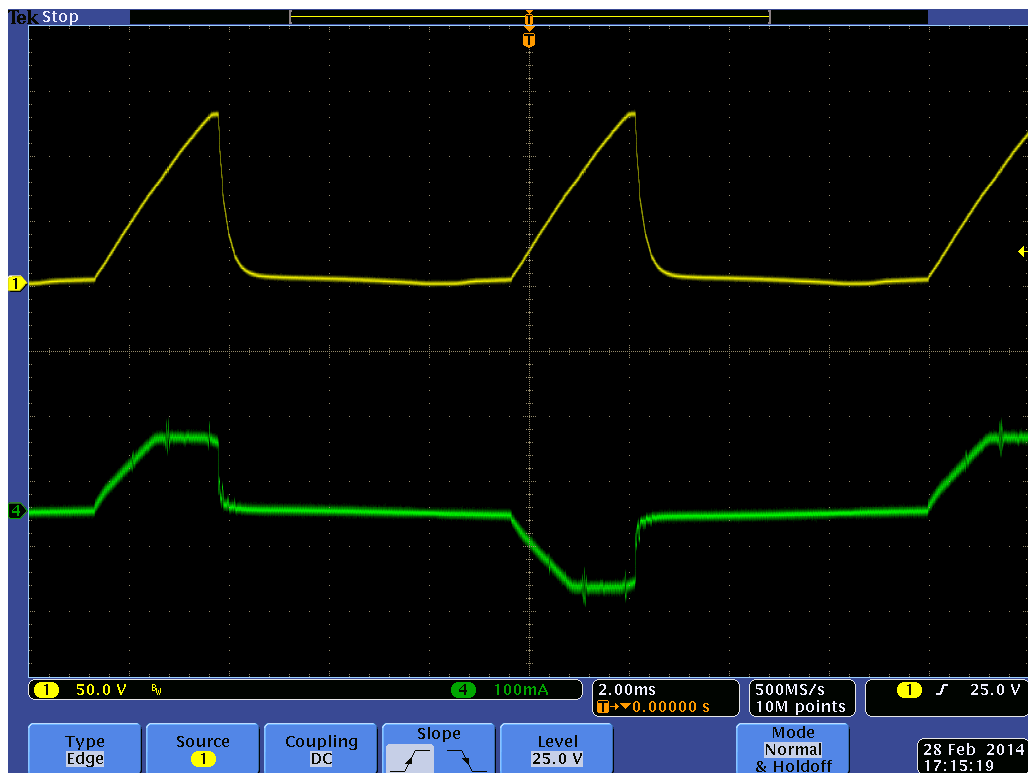
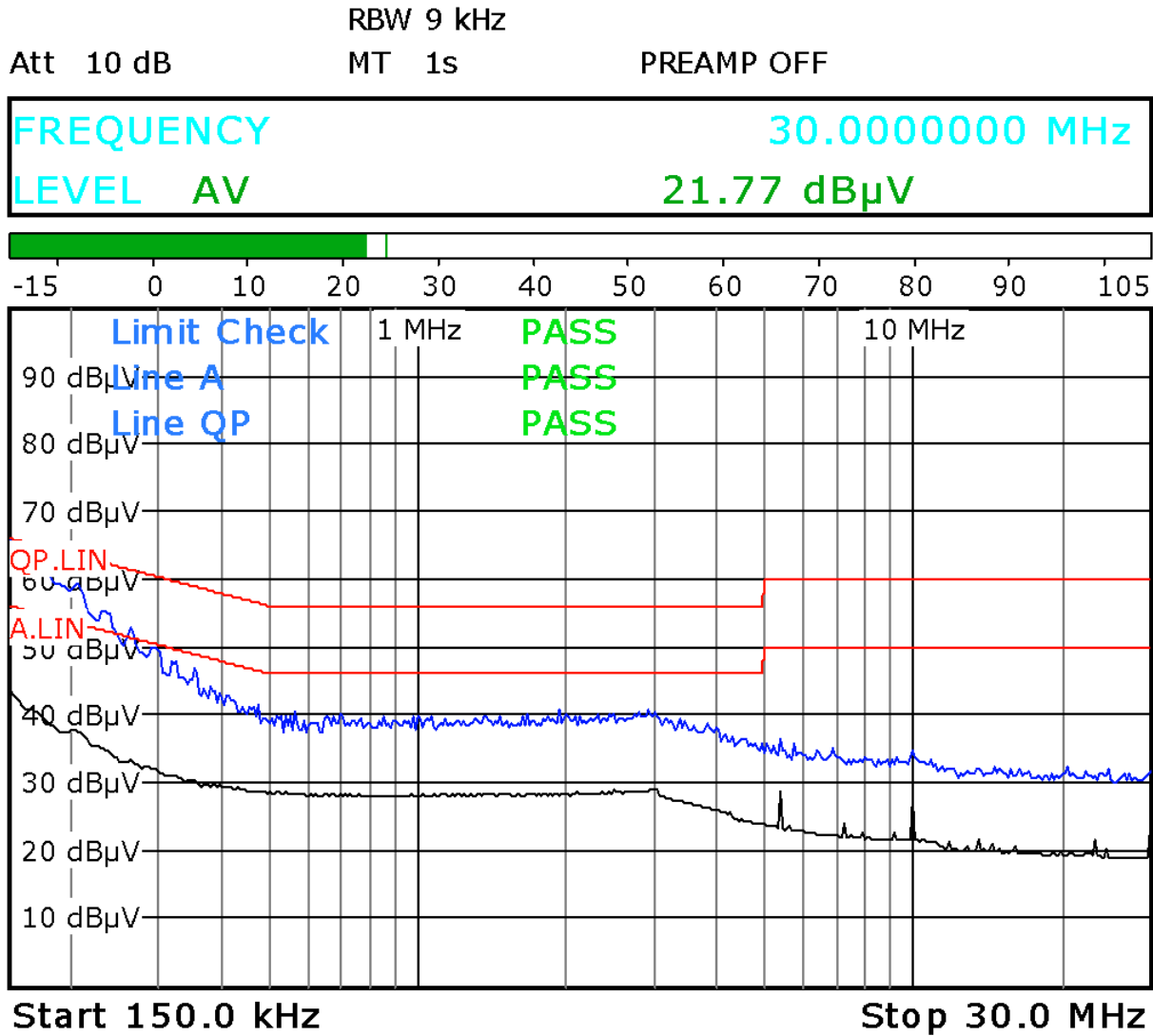


Figure 13. Reverse Phase Dimming: Rectified Input Voltage (Top) and Input Current (Bottom) – Low

### 6.8 EMI Performance

Figure 14 shows the conducted EMI performance of the EVM under the following conditions:

- $P_{IN} = 6.8 \text{ W}$
- $V_{IN} = 120 \text{ VAC}$
- $QP =$  quasi-peak limit line
- $A =$  average limit line
- Blue trace = peak scan
- Black trace = average scan



Date: 28.FEB.2014 04:54:25

Figure 14. Conducted EMI Performance

## 7 TPS92410EVM-001 PCB Layout

Figure 15 and Figure 16 show the design of the TPS92410EVM-001 printed circuit board.

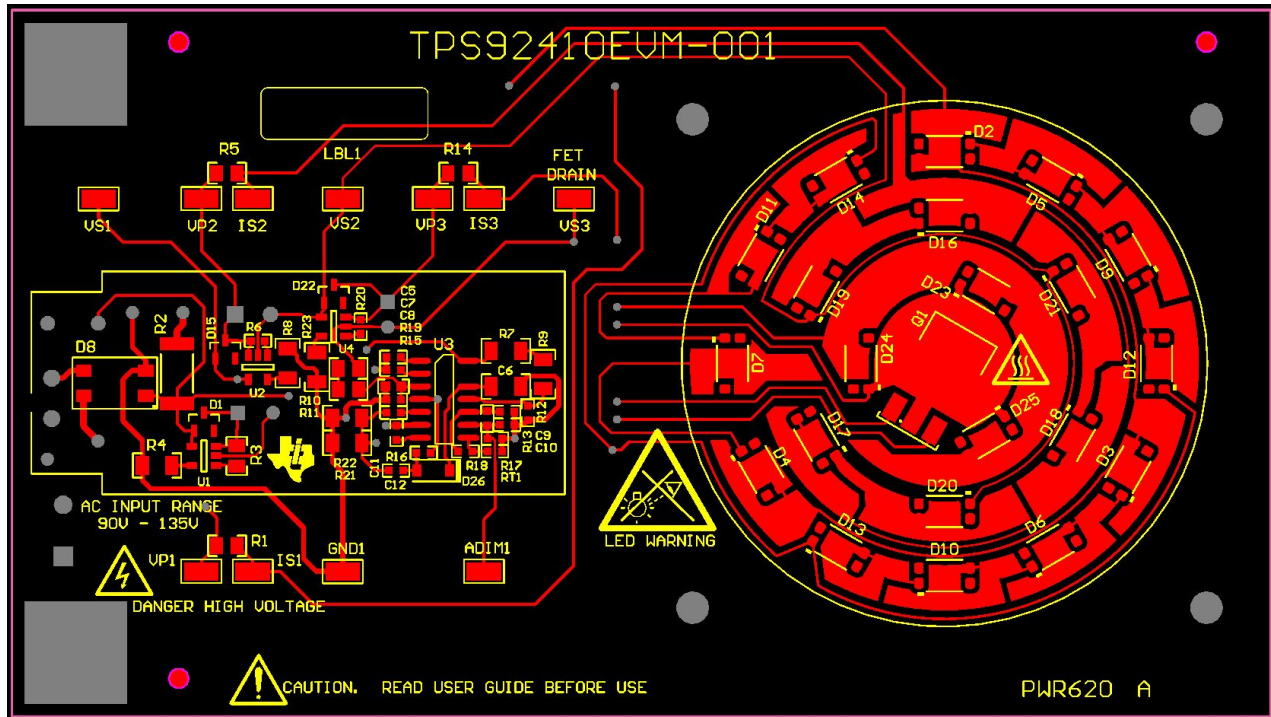


Figure 15. Top Layer and Top Overlay (Top View)

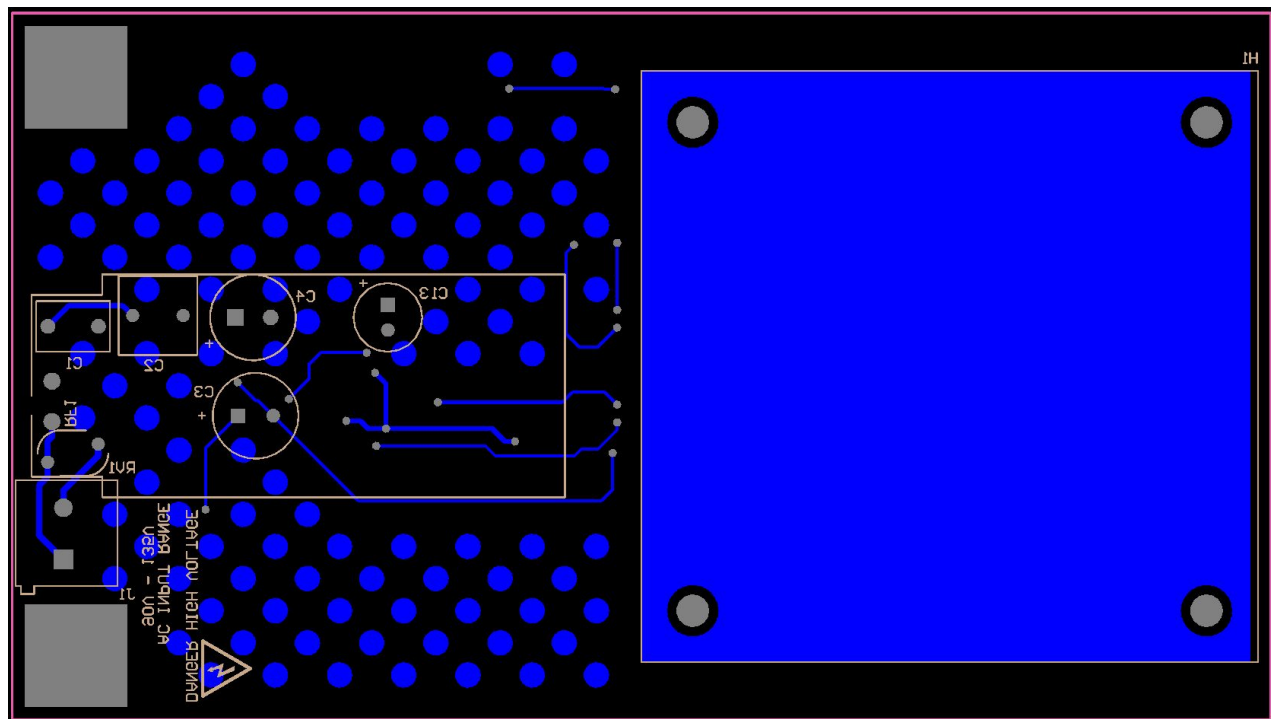


Figure 16. Bottom Layer and Bottom Overlay (Bottom View)

## 8 Bill of Materials

Table 2 contains the TPS92410EVM-001 components list according to the schematic shown in Figure 1.

**Table 2. TPS92410EVM-001 Bill of Materials**

Reference Designator	QTY	Value	Description	Size	Part Number	MFR
C1	1	0.047 $\mu$ F	CAP, Film, 0.047 $\mu$ F, 250VDC	Radial	B32529C3473K189	EPCOS Inc
C2	1	0.15 $\mu$ F	CAP, Film, 0.15 $\mu$ F, 250VDC	Radial	B32529C3154J	EPCOS Inc
C3	1	33 $\mu$ F	CAP, AL, 33 $\mu$ F, 100V, +/-20%, 0.45 ohm	8x15mm	UPW2A330MPD6	Nichicon
C4	1	68 $\mu$ F	CAP, AL, 68 $\mu$ F, 50V, +/-20%, 0.234 ohm	8x11.5mm	EEU-FC1H680	Panasonic
C5, C9	2	0.1 $\mu$ F	CAP, CERM, 0.1 $\mu$ F, 16V, +/-5%, X7R	0603	C0603C104J4RACTU	Kemet
C6	1	10 $\mu$ F	CAP, CERM, 10 $\mu$ F, 25V, +/-10%, X7R	1206	GRM31CR71E106KA12L	MuRata
C7, C12	2	1 $\mu$ F	CAP, CERM, 1 $\mu$ F, 16V, +/-10%, X7R	0603	C1608X7R1C105K	TDK
C8, C11	2	4.7 $\mu$ F	CAP, CERM, 4.7 $\mu$ F, 16V, +/-10%, X5R	0603	GRM188R61C475KAAJ	MuRata
C10	1	1000pF	CAP, CERM, 1000pF, 50V, +/-10%, X7R	0603	GRM188R71H102KA01D	MuRata
C13	1	120 $\mu$ F	CAP, AL, 120 $\mu$ F, 25V, +/-20%, 0.23 ohm	6.3x15mm	UPW1E121MED	Nichicon
D1, D15, D22	3	200V	Diode, Switching, 200V, 0.2A	SOT-23	BAS21-7-F	Diodes Inc.
D2, D3, D4, D5, D6, D7, D9, D10, D11, D12, D13, D14, D16, D17, D18, D19, D20, D21, D23, D24, D25	21	Cool White	LED, Cool White, SMD	3x.75x5.2mm	SAW8KG0B-Y1Z4-CA	Seoul Semiconductor
D8	1		Diode, Switching-Bridge, 600V, 0.8A	MiniDIP	HD06-T	Diodes Inc.
D26	1	100V	Diode, Ultrafast, 100V, 0.15A	SOD-123	1N4148W-7-F	Diodes Inc.
J1	1	2x1	Conn Term Block, 2POS, 5.08mm	2POS Terminal Block	1715721	Phoenix Contact
Q1	1	600V	MOSFET, N-CH, 600V, 2A	DPAK	AOD2N60	AOS
R1, R5, R14	3	1.00 $\Omega$	RES, 1.00 ohm, 1%, 0.125W	0805	RMCF0805FT1R00	Stackpole Electronics Inc
R2	1	442 $\Omega$	RES, 442 ohm, 1%, 1W	2512	CRCW2512442RFKEG	Vishay-Dale
R3	1	1.82M $\Omega$	RES, 1.82Meg ohm, 1%, 0.125W	0805	CRCW08051M82FKEA	Vishay-Dale
R4, R7, R8, R9, R23	5	1.00M $\Omega$	RES, 1.00Meg ohm, 1%, 0.25W	1206	CRCW12061M00FKEA	Vishay-Dale
R6	1	1.65M $\Omega$	RES, 1.65Meg ohm, 1%, 0.1W	0603	CRCW06031M65FKEA	Vishay-Dale
R10, R11	2	2.00M $\Omega$	RES, 2.00Meg ohm, 1%, 0.125W	0805	CRCW08052M00FKEA	Vishay-Dale
R12, R18	2	30.1k $\Omega$	RES, 30.1k ohm, 1%, 0.1W	0603	CRCW060330K1FKEA	Vishay-Dale
R13	1	200k $\Omega$	RES, 200k ohm, 1%, 0.1W	0603	CRCW0603200KFKEA	Vishay-Dale
R15	1	54.9k $\Omega$	RES, 54.9k ohm, 1%, 0.1W	0603	CRCW060354K9FKEA	Vishay-Dale
R16	1	10.0 $\Omega$	RES, 10.0 ohm, 1%, 0.1W	0603	CRCW060310R0FKEA	Vishay-Dale
R19	1	121k $\Omega$	RES, 121k ohm, 1%, 0.1W	0603	CRCW0603121KFKEA	Vishay-Dale
R20	1	1.43M $\Omega$	RES, 1.43Meg ohm, 1%, 0.1W	0603	CRCW06031M43FKEA	Vishay-Dale
R21	1	30.1 $\Omega$	RES, 30.1 ohm, 1%, 0.25W	1206	CRCW120630R1FKEA	Vishay-Dale
R22	1	182 $\Omega$	RES, 182 ohm, 1%, 0.25W	1206	CRCW1206182RFKEA	Vishay-Dale
RF1	1	47 $\Omega$	RES, 47 ohm, 10%, 2W	Axial	EMC2-47RKI	TT Electronics/Welwyn
RT1	1	470k $\Omega$	Thermistor NTC, 470k ohm, 5%	0603	NCP18WM474J03RB	MuRata



**Table 2. TPS92410EVM-001 Bill of Materials (continued)**

Reference Designator	QTY	Value	Description	Size	Part Number	MFR
RV1	1	220V	Varistor, 220V, 600A	Disc 10x7mm	ERZ-V05D221	Panasonic
U1, U2, U4	3		Switch Controlled Direct Drive Switch for Offline LED Drivers	SOT23-5	TPS92411PDBV	Texas Instruments
U3	1		Switch Controlled Direct Drive Linear Controller for Offline LED Drivers	SOIC-13	TPS92410D	Texas Instruments
R17	0	DNP				

## STANDARD TERMS FOR EVALUATION MODULES

1. *Delivery:* TI delivers TI evaluation boards, kits, or modules, including any accompanying demonstration software, components, and/or documentation which may be provided together or separately (collectively, an "EVM" or "EVMs") to the User ("User") in accordance with the terms set forth herein. User's acceptance of the EVM is expressly subject to the following terms.
  - 1.1 EVMs are intended solely for product or software developers for use in a research and development setting to facilitate feasibility evaluation, experimentation, or scientific analysis of TI semiconductor products. EVMs have no direct function and are not finished products. EVMs shall not be directly or indirectly assembled as a part or subassembly in any finished product. For clarification, any software or software tools provided with the EVM ("Software") shall not be subject to the terms and conditions set forth herein but rather shall be subject to the applicable terms that accompany such Software
  - 1.2 EVMs are not intended for consumer or household use. EVMs may not be sold, sublicensed, leased, rented, loaned, assigned, or otherwise distributed for commercial purposes by Users, in whole or in part, or used in any finished product or production system.
2. *Limited Warranty and Related Remedies/Disclaimers:*
  - 2.1 These terms do not apply to Software. The warranty, if any, for Software is covered in the applicable Software License Agreement.
  - 2.2 TI warrants that the TI EVM will conform to TI's published specifications for ninety (90) days after the date TI delivers such EVM to User. Notwithstanding the foregoing, TI shall not be liable for a nonconforming EVM if (a) the nonconformity was caused by neglect, misuse or mistreatment by an entity other than TI, including improper installation or testing, or for any EVMs that have been altered or modified in any way by an entity other than TI, (b) the nonconformity resulted from User's design, specifications or instructions for such EVMs or improper system design, or (c) User has not paid on time. Testing and other quality control techniques are used to the extent TI deems necessary. TI does not test all parameters of each EVM. User's claims against TI under this Section 2 are void if User fails to notify TI of any apparent defects in the EVMs within ten (10) business days after delivery, or of any hidden defects with ten (10) business days after the defect has been detected.
  - 2.3 TI's sole liability shall be at its option to repair or replace EVMs that fail to conform to the warranty set forth above, or credit User's account for such EVM. TI's liability under this warranty shall be limited to EVMs that are returned during the warranty period to the address designated by TI and that are determined by TI not to conform to such warranty. If TI elects to repair or replace such EVM, TI shall have a reasonable time to repair such EVM or provide replacements. Repaired EVMs shall be warranted for the remainder of the original warranty period. Replaced EVMs shall be warranted for a new full ninety (90) day warranty period.
3. *Regulatory Notices:*
  - 3.1 *United States*
    - 3.1.1 *Notice applicable to EVMs not FCC-Approved:*

**FCC NOTICE:** This kit is designed to allow product developers to evaluate electronic components, circuitry, or software associated with the kit to determine whether to incorporate such items in a finished product and software developers to write software applications for use with the end product. This kit is not a finished product and when assembled may not be resold or otherwise marketed unless all required FCC equipment authorizations are first obtained. Operation is subject to the condition that this product not cause harmful interference to licensed radio stations and that this product accept harmful interference. Unless the assembled kit is designed to operate under part 15, part 18 or part 95 of this chapter, the operator of the kit must operate under the authority of an FCC license holder or must secure an experimental authorization under part 5 of this chapter.
    - 3.1.2 *For EVMs annotated as FCC – FEDERAL COMMUNICATIONS COMMISSION Part 15 Compliant:*

### CAUTION

This device complies with part 15 of the FCC Rules. Operation is subject to the following two conditions: (1) This device may not cause harmful interference, and (2) this device must accept any interference received, including interference that may cause undesired operation.

Changes or modifications not expressly approved by the party responsible for compliance could void the user's authority to operate the equipment.

### FCC Interference Statement for Class A EVM devices

*NOTE: This equipment has been tested and found to comply with the limits for a Class A digital device, pursuant to part 15 of the FCC Rules. These limits are designed to provide reasonable protection against harmful interference when the equipment is operated in a commercial environment. This equipment generates, uses, and can radiate radio frequency energy and, if not installed and used in accordance with the instruction manual, may cause harmful interference to radio communications. Operation of this equipment in a residential area is likely to cause harmful interference in which case the user will be required to correct the interference at his own expense.*

## FCC Interference Statement for Class B EVM devices

*NOTE: This equipment has been tested and found to comply with the limits for a Class B digital device, pursuant to part 15 of the FCC Rules. These limits are designed to provide reasonable protection against harmful interference in a residential installation. This equipment generates, uses and can radiate radio frequency energy and, if not installed and used in accordance with the instructions, may cause harmful interference to radio communications. However, there is no guarantee that interference will not occur in a particular installation. If this equipment does cause harmful interference to radio or television reception, which can be determined by turning the equipment off and on, the user is encouraged to try to correct the interference by one or more of the following measures:*

- Reorient or relocate the receiving antenna.
- Increase the separation between the equipment and receiver.
- Connect the equipment into an outlet on a circuit different from that to which the receiver is connected.
- Consult the dealer or an experienced radio/TV technician for help.

### 3.2 Canada

3.2.1 For EVMs issued with an Industry Canada Certificate of Conformance to RSS-210 or RSS-247

#### Concerning EVMs Including Radio Transmitters:

This device complies with Industry Canada license-exempt RSSs. Operation is subject to the following two conditions:

(1) this device may not cause interference, and (2) this device must accept any interference, including interference that may cause undesired operation of the device.

#### Concernant les EVMs avec appareils radio:

Le présent appareil est conforme aux CNR d'Industrie Canada applicables aux appareils radio exempts de licence. L'exploitation est autorisée aux deux conditions suivantes: (1) l'appareil ne doit pas produire de brouillage, et (2) l'utilisateur de l'appareil doit accepter tout brouillage radioélectrique subi, même si le brouillage est susceptible d'en compromettre le fonctionnement.

#### Concerning EVMs Including Detachable Antennas:

Under Industry Canada regulations, this radio transmitter may only operate using an antenna of a type and maximum (or lesser) gain approved for the transmitter by Industry Canada. To reduce potential radio interference to other users, the antenna type and its gain should be so chosen that the equivalent isotropically radiated power (e.i.r.p.) is not more than that necessary for successful communication. This radio transmitter has been approved by Industry Canada to operate with the antenna types listed in the user guide with the maximum permissible gain and required antenna impedance for each antenna type indicated. Antenna types not included in this list, having a gain greater than the maximum gain indicated for that type, are strictly prohibited for use with this device.

#### Concernant les EVMs avec antennes détachables

Conformément à la réglementation d'Industrie Canada, le présent émetteur radio peut fonctionner avec une antenne d'un type et d'un gain maximal (ou inférieur) approuvé pour l'émetteur par Industrie Canada. Dans le but de réduire les risques de brouillage radioélectrique à l'intention des autres utilisateurs, il faut choisir le type d'antenne et son gain de sorte que la puissance isotrope rayonnée équivalente (p.i.r.e.) ne dépasse pas l'intensité nécessaire à l'établissement d'une communication satisfaisante. Le présent émetteur radio a été approuvé par Industrie Canada pour fonctionner avec les types d'antenne énumérés dans le manuel d'usage et ayant un gain admissible maximal et l'impédance requise pour chaque type d'antenne. Les types d'antenne non inclus dans cette liste, ou dont le gain est supérieur au gain maximal indiqué, sont strictement interdits pour l'exploitation de l'émetteur.

### 3.3 Japan

3.3.1 *Notice for EVMs delivered in Japan:* Please see [http://www.tij.co.jp/lstds/ti\\_ja/general/eStore/notice\\_01.page](http://www.tij.co.jp/lstds/ti_ja/general/eStore/notice_01.page) 日本国内に輸入される評価用キット、ボードについては、次のところをご覧ください。  
[http://www.tij.co.jp/lstds/ti\\_ja/general/eStore/notice\\_01.page](http://www.tij.co.jp/lstds/ti_ja/general/eStore/notice_01.page)

3.3.2 *Notice for Users of EVMs Considered "Radio Frequency Products" in Japan:* EVMs entering Japan may not be certified by TI as conforming to Technical Regulations of Radio Law of Japan.

If User uses EVMs in Japan, not certified to Technical Regulations of Radio Law of Japan, User is required to follow the instructions set forth by Radio Law of Japan, which includes, but is not limited to, the instructions below with respect to EVMs (which for the avoidance of doubt are stated strictly for convenience and should be verified by User):

1. Use EVMs in a shielded room or any other test facility as defined in the notification #173 issued by Ministry of Internal Affairs and Communications on March 28, 2006, based on Sub-section 1.1 of Article 6 of the Ministry's Rule for Enforcement of Radio Law of Japan,
2. Use EVMs only after User obtains the license of Test Radio Station as provided in Radio Law of Japan with respect to EVMs, or
3. Use of EVMs only after User obtains the Technical Regulations Conformity Certification as provided in Radio Law of Japan with respect to EVMs. Also, do not transfer EVMs, unless User gives the same notice above to the transferee. Please note that if User does not follow the instructions above, User will be subject to penalties of Radio Law of Japan.

【無線電波を送信する製品の開発キットをお使いになる際の注意事項】 開発キットの中には技術基準適合証明を受けていないものがあります。技術適合証明を受けていないものご使用に際しては、電波法遵守のため、以下のいずれかの措置を取っていただく必要がありますのでご注意ください。

1. 電波法施行規則第6条第1項第1号に基づく平成18年3月28日総務省告示第173号で定められた電波暗室等の試験設備でご使用いただく。
2. 実験局の免許を取得後ご使用いただく。
3. 技術基準適合証明を取得後ご使用いただく。

なお、本製品は、上記の「ご使用にあたっての注意」を譲渡先、移転先に通知しない限り、譲渡、移転できないものとします。

上記を遵守頂けない場合は、電波法の罰則が適用される可能性があることをご留意ください。日本テキサス・インスツルメンツ株式会社  
東京都新宿区西新宿 6 丁目 2 4 番 1 号  
西新宿三井ビル

3.3.3 *Notice for EVMs for Power Line Communication:* Please see [http://www.tij.co.jp/lstds/ti\\_ja/general/eStore/notice\\_02.page](http://www.tij.co.jp/lstds/ti_ja/general/eStore/notice_02.page)  
電力線搬送波通信についての開発キットをお使いになる際の注意事項については、次のところをご覧ください。 [http://www.tij.co.jp/lstds/ti\\_ja/general/eStore/notice\\_02.page](http://www.tij.co.jp/lstds/ti_ja/general/eStore/notice_02.page)

#### 3.4 *European Union*

##### 3.4.1 *For EVMs subject to EU Directive 2014/30/EU (Electromagnetic Compatibility Directive):*

This is a class A product intended for use in environments other than domestic environments that are connected to a low-voltage power-supply network that supplies buildings used for domestic purposes. In a domestic environment this product may cause radio interference in which case the user may be required to take adequate measures.

#### 4 *EVM Use Restrictions and Warnings:*

4.1 EVMS ARE NOT FOR USE IN FUNCTIONAL SAFETY AND/OR SAFETY CRITICAL EVALUATIONS, INCLUDING BUT NOT LIMITED TO EVALUATIONS OF LIFE SUPPORT APPLICATIONS.

4.2 User must read and apply the user guide and other available documentation provided by TI regarding the EVM prior to handling or using the EVM, including without limitation any warning or restriction notices. The notices contain important safety information related to, for example, temperatures and voltages.

##### 4.3 *Safety-Related Warnings and Restrictions:*

4.3.1 User shall operate the EVM within TI's recommended specifications and environmental considerations stated in the user guide, other available documentation provided by TI, and any other applicable requirements and employ reasonable and customary safeguards. Exceeding the specified performance ratings and specifications (including but not limited to input and output voltage, current, power, and environmental ranges) for the EVM may cause personal injury or death, or property damage. If there are questions concerning performance ratings and specifications, User should contact a TI field representative prior to connecting interface electronics including input power and intended loads. Any loads applied outside of the specified output range may also result in unintended and/or inaccurate operation and/or possible permanent damage to the EVM and/or interface electronics. Please consult the EVM user guide prior to connecting any load to the EVM output. If there is uncertainty as to the load specification, please contact a TI field representative. During normal operation, even with the inputs and outputs kept within the specified allowable ranges, some circuit components may have elevated case temperatures. These components include but are not limited to linear regulators, switching transistors, pass transistors, current sense resistors, and heat sinks, which can be identified using the information in the associated documentation. When working with the EVM, please be aware that the EVM may become very warm.

4.3.2 EVMs are intended solely for use by technically qualified, professional electronics experts who are familiar with the dangers and application risks associated with handling electrical mechanical components, systems, and subsystems. User assumes all responsibility and liability for proper and safe handling and use of the EVM by User or its employees, affiliates, contractors or designees. User assumes all responsibility and liability to ensure that any interfaces (electronic and/or mechanical) between the EVM and any human body are designed with suitable isolation and means to safely limit accessible leakage currents to minimize the risk of electrical shock hazard. User assumes all responsibility and liability for any improper or unsafe handling or use of the EVM by User or its employees, affiliates, contractors or designees.

4.4 User assumes all responsibility and liability to determine whether the EVM is subject to any applicable international, federal, state, or local laws and regulations related to User's handling and use of the EVM and, if applicable, User assumes all responsibility and liability for compliance in all respects with such laws and regulations. User assumes all responsibility and liability for proper disposal and recycling of the EVM consistent with all applicable international, federal, state, and local requirements.

5. *Accuracy of Information:* To the extent TI provides information on the availability and function of EVMs, TI attempts to be as accurate as possible. However, TI does not warrant the accuracy of EVM descriptions, EVM availability or other information on its websites as accurate, complete, reliable, current, or error-free.

6. *Disclaimers:*

6.1 EXCEPT AS SET FORTH ABOVE, EVMS AND ANY MATERIALS PROVIDED WITH THE EVM (INCLUDING, BUT NOT LIMITED TO, REFERENCE DESIGNS AND THE DESIGN OF THE EVM ITSELF) ARE PROVIDED "AS IS" AND "WITH ALL FAULTS." TI DISCLAIMS ALL OTHER WARRANTIES, EXPRESS OR IMPLIED, REGARDING SUCH ITEMS, INCLUDING BUT NOT LIMITED TO ANY EPIDEMIC FAILURE WARRANTY OR IMPLIED WARRANTIES OF MERCHANTABILITY OR FITNESS FOR A PARTICULAR PURPOSE OR NON-INFRINGEMENT OF ANY THIRD PARTY PATENTS, COPYRIGHTS, TRADE SECRETS OR OTHER INTELLECTUAL PROPERTY RIGHTS.

6.2 EXCEPT FOR THE LIMITED RIGHT TO USE THE EVM SET FORTH HEREIN, NOTHING IN THESE TERMS SHALL BE CONSTRUED AS GRANTING OR CONFERRING ANY RIGHTS BY LICENSE, PATENT, OR ANY OTHER INDUSTRIAL OR INTELLECTUAL PROPERTY RIGHT OF TI, ITS SUPPLIERS/LICENSORS OR ANY OTHER THIRD PARTY, TO USE THE EVM IN ANY FINISHED END-USER OR READY-TO-USE FINAL PRODUCT, OR FOR ANY INVENTION, DISCOVERY OR IMPROVEMENT, REGARDLESS OF WHEN MADE, CONCEIVED OR ACQUIRED.

7. *USER'S INDEMNITY OBLIGATIONS AND REPRESENTATIONS.* USER WILL DEFEND, INDEMNIFY AND HOLD TI, ITS LICENSORS AND THEIR REPRESENTATIVES HARMLESS FROM AND AGAINST ANY AND ALL CLAIMS, DAMAGES, LOSSES, EXPENSES, COSTS AND LIABILITIES (COLLECTIVELY, "CLAIMS") ARISING OUT OF OR IN CONNECTION WITH ANY HANDLING OR USE OF THE EVM THAT IS NOT IN ACCORDANCE WITH THESE TERMS. THIS OBLIGATION SHALL APPLY WHETHER CLAIMS ARISE UNDER STATUTE, REGULATION, OR THE LAW OF TORT, CONTRACT OR ANY OTHER LEGAL THEORY, AND EVEN IF THE EVM FAILS TO PERFORM AS DESCRIBED OR EXPECTED.

8. *Limitations on Damages and Liability:*

8.1 *General Limitations.* IN NO EVENT SHALL TI BE LIABLE FOR ANY SPECIAL, COLLATERAL, INDIRECT, PUNITIVE, INCIDENTAL, CONSEQUENTIAL, OR EXEMPLARY DAMAGES IN CONNECTION WITH OR ARISING OUT OF THESE TERMS OR THE USE OF THE EVMS, REGARDLESS OF WHETHER TI HAS BEEN ADVISED OF THE POSSIBILITY OF SUCH DAMAGES. EXCLUDED DAMAGES INCLUDE, BUT ARE NOT LIMITED TO, COST OF REMOVAL OR REINSTALLATION, ANCILLARY COSTS TO THE PROCUREMENT OF SUBSTITUTE GOODS OR SERVICES, RETESTING, OUTSIDE COMPUTER TIME, LABOR COSTS, LOSS OF GOODWILL, LOSS OF PROFITS, LOSS OF SAVINGS, LOSS OF USE, LOSS OF DATA, OR BUSINESS INTERRUPTION. NO CLAIM, SUIT OR ACTION SHALL BE BROUGHT AGAINST TI MORE THAN TWELVE (12) MONTHS AFTER THE EVENT THAT GAVE RISE TO THE CAUSE OF ACTION HAS OCCURRED.

8.2 *Specific Limitations.* IN NO EVENT SHALL TI'S AGGREGATE LIABILITY FROM ANY USE OF AN EVM PROVIDED HEREUNDER, INCLUDING FROM ANY WARRANTY, INDEMNITY OR OTHER OBLIGATION ARISING OUT OF OR IN CONNECTION WITH THESE TERMS, EXCEED THE TOTAL AMOUNT PAID TO TI BY USER FOR THE PARTICULAR EVM(S) AT ISSUE DURING THE PRIOR TWELVE (12) MONTHS WITH RESPECT TO WHICH LOSSES OR DAMAGES ARE CLAIMED. THE EXISTENCE OF MORE THAN ONE CLAIM SHALL NOT ENLARGE OR EXTEND THIS LIMIT.

9. *Return Policy.* Except as otherwise provided, TI does not offer any refunds, returns, or exchanges. Furthermore, no return of EVM(s) will be accepted if the package has been opened and no return of the EVM(s) will be accepted if they are damaged or otherwise not in a resalable condition. If User feels it has been incorrectly charged for the EVM(s) it ordered or that delivery violates the applicable order, User should contact TI. All refunds will be made in full within thirty (30) working days from the return of the components(s), excluding any postage or packaging costs.

10. *Governing Law:* These terms and conditions shall be governed by and interpreted in accordance with the laws of the State of Texas, without reference to conflict-of-laws principles. User agrees that non-exclusive jurisdiction for any dispute arising out of or relating to these terms and conditions lies within courts located in the State of Texas and consents to venue in Dallas County, Texas. Notwithstanding the foregoing, any judgment may be enforced in any United States or foreign court, and TI may seek injunctive relief in any United States or foreign court.

## IMPORTANT NOTICE FOR TI DESIGN INFORMATION AND RESOURCES

Texas Instruments Incorporated ("TI") technical, application or other design advice, services or information, including, but not limited to, reference designs and materials relating to evaluation modules, (collectively, "TI Resources") are intended to assist designers who are developing applications that incorporate TI products; by downloading, accessing or using any particular TI Resource in any way, you (individually or, if you are acting on behalf of a company, your company) agree to use it solely for this purpose and subject to the terms of this Notice.

TI's provision of TI Resources does not expand or otherwise alter TI's applicable published warranties or warranty disclaimers for TI products, and no additional obligations or liabilities arise from TI providing such TI Resources. TI reserves the right to make corrections, enhancements, improvements and other changes to its TI Resources.

You understand and agree that you remain responsible for using your independent analysis, evaluation and judgment in designing your applications and that you have full and exclusive responsibility to assure the safety of your applications and compliance of your applications (and of all TI products used in or for your applications) with all applicable regulations, laws and other applicable requirements. You represent that, with respect to your applications, you have all the necessary expertise to create and implement safeguards that (1) anticipate dangerous consequences of failures, (2) monitor failures and their consequences, and (3) lessen the likelihood of failures that might cause harm and take appropriate actions. You agree that prior to using or distributing any applications that include TI products, you will thoroughly test such applications and the functionality of such TI products as used in such applications. TI has not conducted any testing other than that specifically described in the published documentation for a particular TI Resource.

You are authorized to use, copy and modify any individual TI Resource only in connection with the development of applications that include the TI product(s) identified in such TI Resource. NO OTHER LICENSE, EXPRESS OR IMPLIED, BY ESTOPPEL OR OTHERWISE TO ANY OTHER TI INTELLECTUAL PROPERTY RIGHT, AND NO LICENSE TO ANY TECHNOLOGY OR INTELLECTUAL PROPERTY RIGHT OF TI OR ANY THIRD PARTY IS GRANTED HEREIN, including but not limited to any patent right, copyright, mask work right, or other intellectual property right relating to any combination, machine, or process in which TI products or services are used. Information regarding or referencing third-party products or services does not constitute a license to use such products or services, or a warranty or endorsement thereof. Use of TI Resources may require a license from a third party under the patents or other intellectual property of the third party, or a license from TI under the patents or other intellectual property of TI.

TI RESOURCES ARE PROVIDED "AS IS" AND WITH ALL FAULTS. TI DISCLAIMS ALL OTHER WARRANTIES OR REPRESENTATIONS, EXPRESS OR IMPLIED, REGARDING TI RESOURCES OR USE THEREOF, INCLUDING BUT NOT LIMITED TO ACCURACY OR COMPLETENESS, TITLE, ANY EPIDEMIC FAILURE WARRANTY AND ANY IMPLIED WARRANTIES OF MERCHANTABILITY, FITNESS FOR A PARTICULAR PURPOSE, AND NON-INFRINGEMENT OF ANY THIRD PARTY INTELLECTUAL PROPERTY RIGHTS.

TI SHALL NOT BE LIABLE FOR AND SHALL NOT DEFEND OR INDEMNIFY YOU AGAINST ANY CLAIM, INCLUDING BUT NOT LIMITED TO ANY INFRINGEMENT CLAIM THAT RELATES TO OR IS BASED ON ANY COMBINATION OF PRODUCTS EVEN IF DESCRIBED IN TI RESOURCES OR OTHERWISE. IN NO EVENT SHALL TI BE LIABLE FOR ANY ACTUAL, DIRECT, SPECIAL, COLLATERAL, INDIRECT, PUNITIVE, INCIDENTAL, CONSEQUENTIAL OR EXEMPLARY DAMAGES IN CONNECTION WITH OR ARISING OUT OF TI RESOURCES OR USE THEREOF, AND REGARDLESS OF WHETHER TI HAS BEEN ADVISED OF THE POSSIBILITY OF SUCH DAMAGES.

You agree to fully indemnify TI and its representatives against any damages, costs, losses, and/or liabilities arising out of your non-compliance with the terms and provisions of this Notice.

This Notice applies to TI Resources. Additional terms apply to the use and purchase of certain types of materials, TI products and services. These include; without limitation, TI's standard terms for semiconductor products (<http://www.ti.com/sc/docs/stdterms.htm>), [evaluation modules](#), and [samples](http://www.ti.com/sc/docs/sampterm.htm) (<http://www.ti.com/sc/docs/sampterm.htm>).

Mailing Address: Texas Instruments, Post Office Box 655303, Dallas, Texas 75265  
Copyright © 2017, Texas Instruments Incorporated