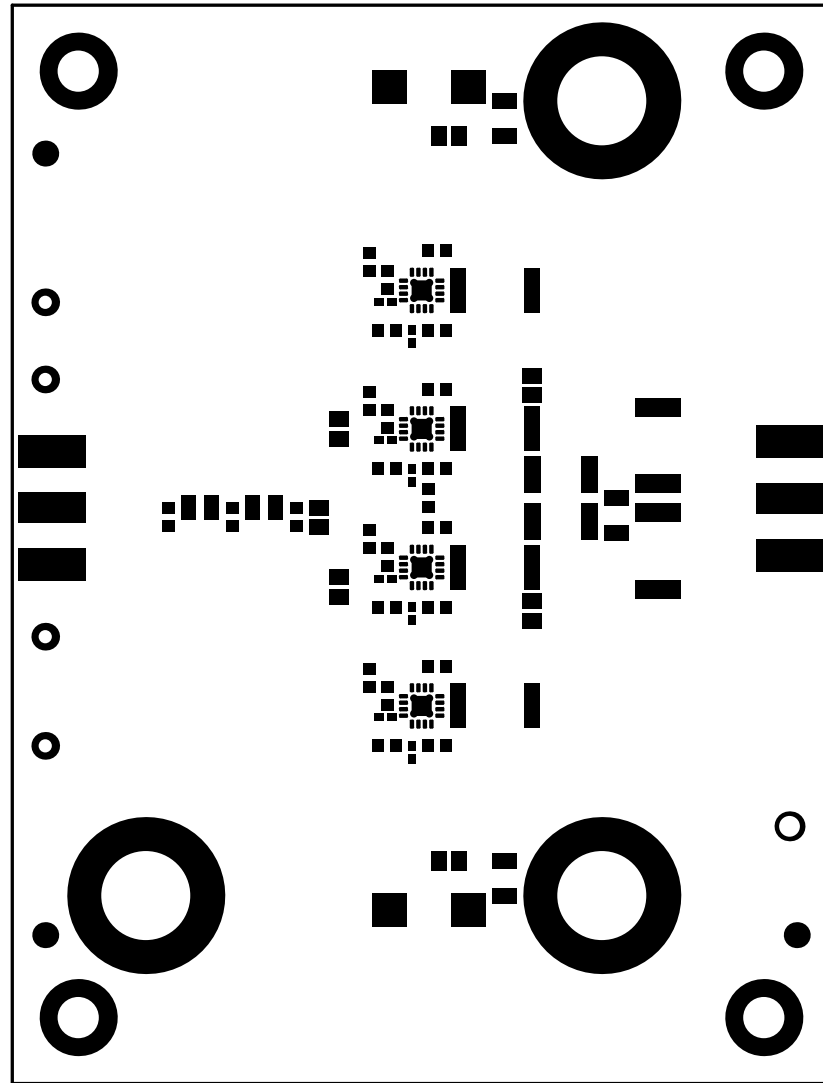
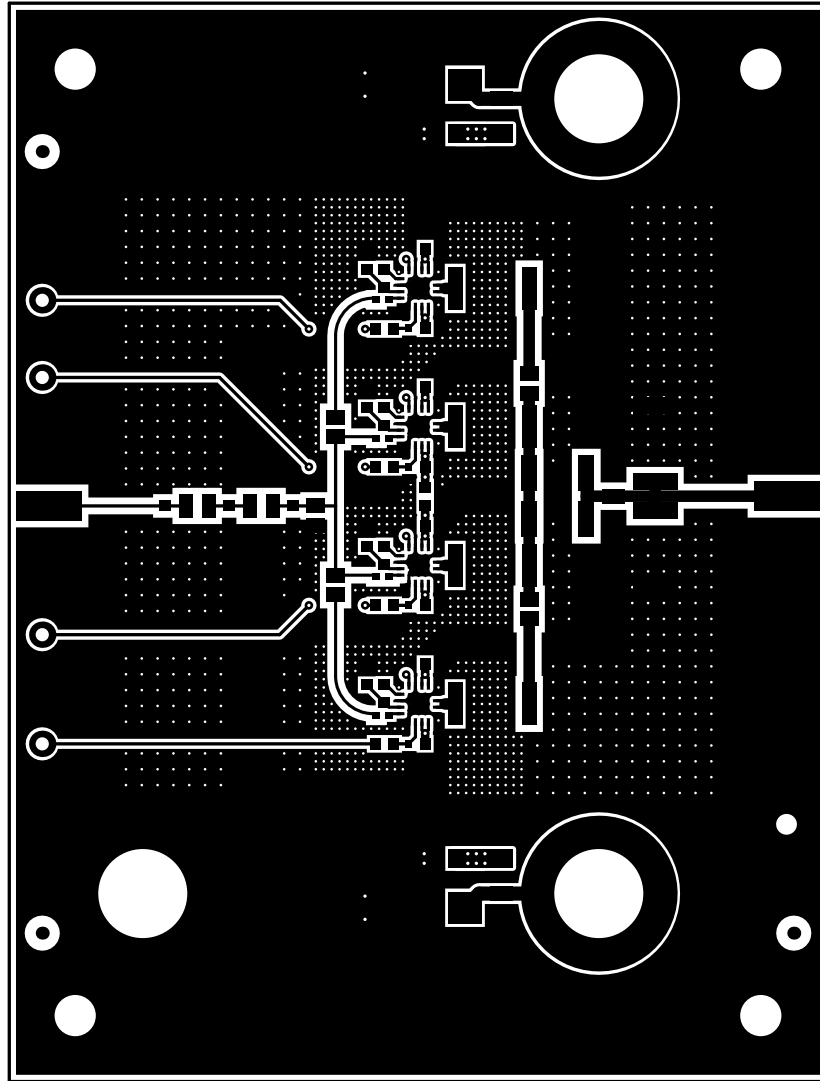


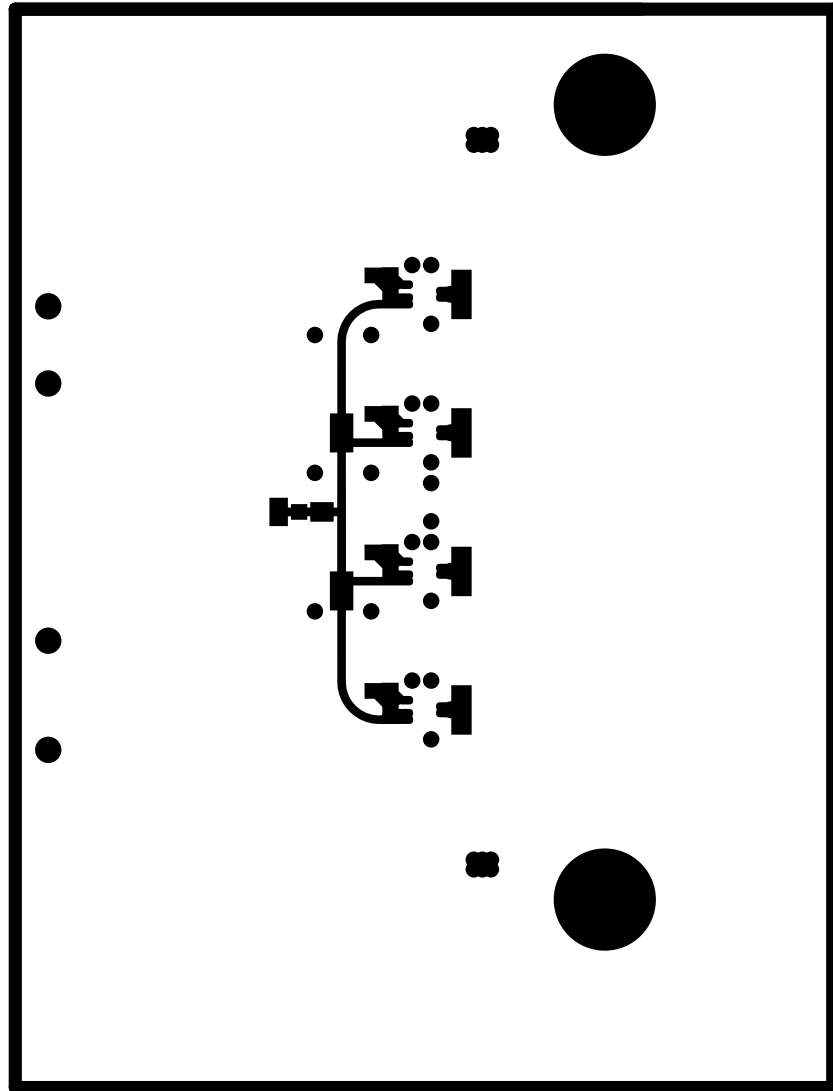
ALL ARTWORK VIEWED FROM TOP SIDE	BOARD #: TIDA-060002	REV: E1	SVN REV: Not In VersionControl
LAYER NAME = Top Overlay	TID #: TIDA-060002		
PLOT NAME = Top Overlay	GENERATED : 10/2/2018 9:28:15 AM	TEXAS INSTRUMENTS	



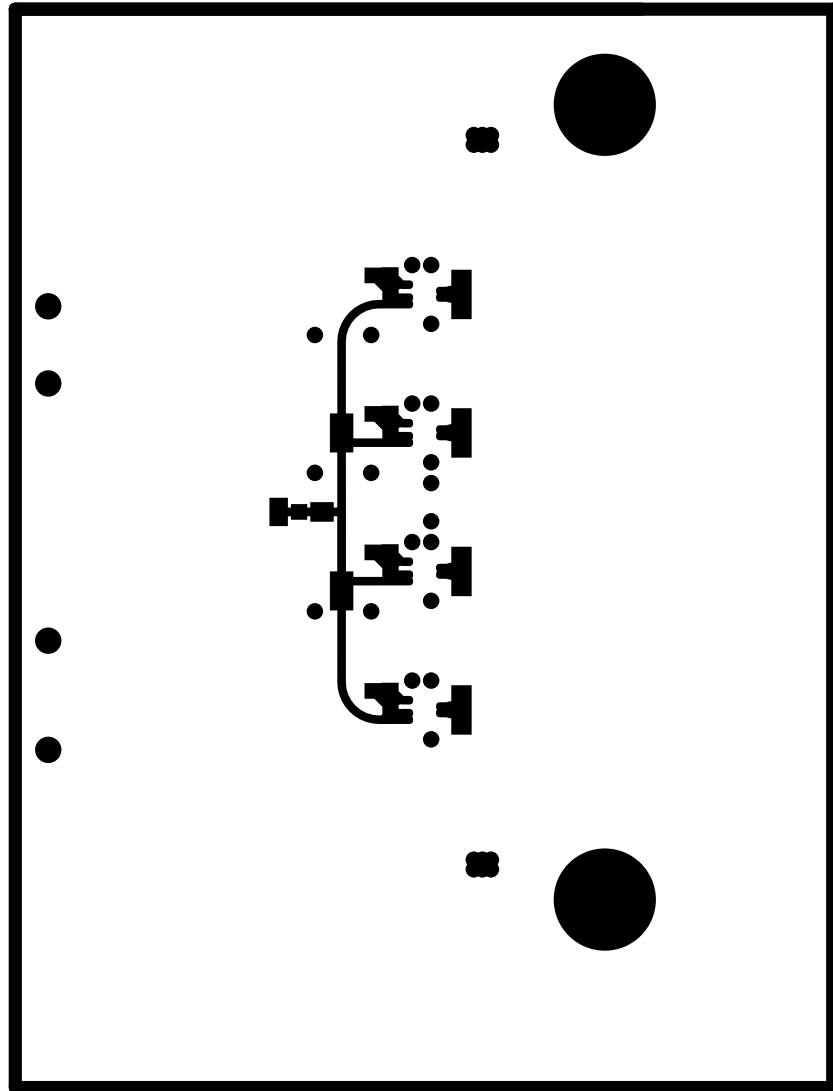
ALL ARTWORK VIEWED FROM TOP SIDE	BOARD #: TIDA-060002	REV: E1	SVN REV: Not In VersionControl
LAYER NAME = Top Solder	TID #: TIDA-060002		
PLOT NAME = Top Solder Mask	GENERATED : 10/2/2018 9:28:16 AM	TEXAS INSTRUMENTS	



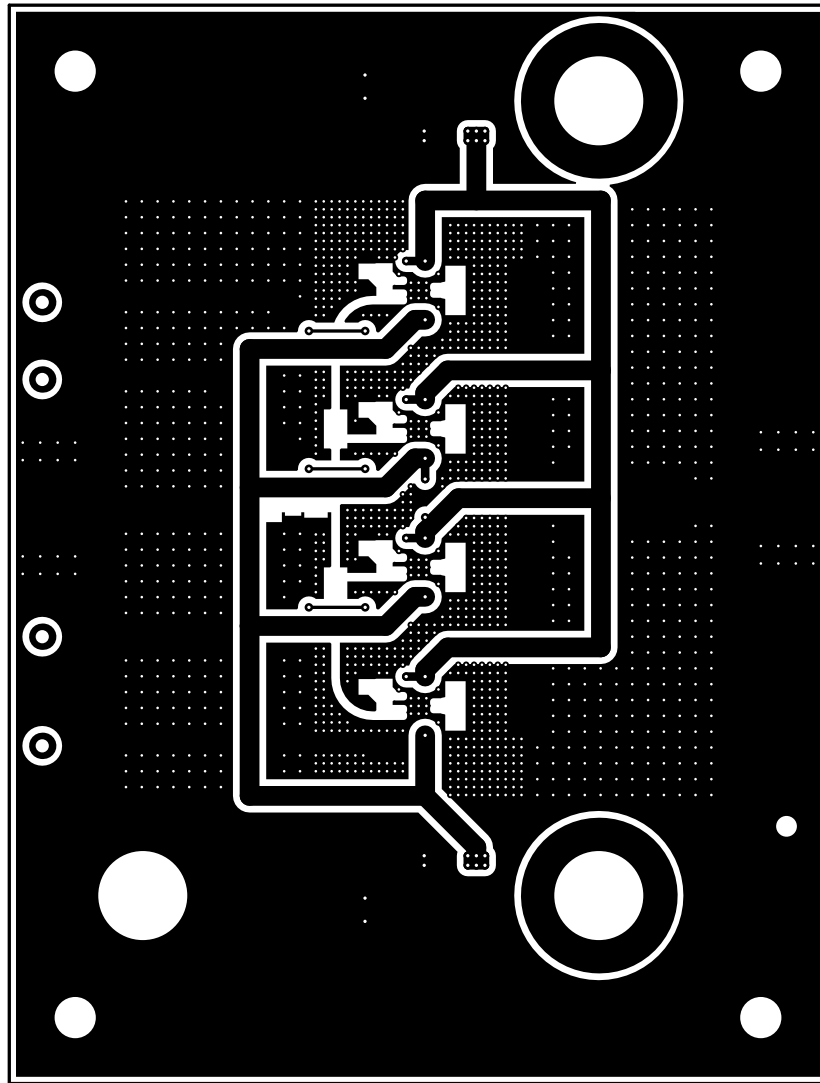
ALL ARTWORK VIEWED FROM TOP SIDE	BOARD #: TIDA-060002	REV: E1	SVN REV: Not In VersionControl
LAYER NAME = Top Layer L1	TID #: TIDA-060002		
PLOT NAME = Top Layer L1	GENERATED : 10/2/2018 9:28:17 AM	TEXAS INSTRUMENTS	



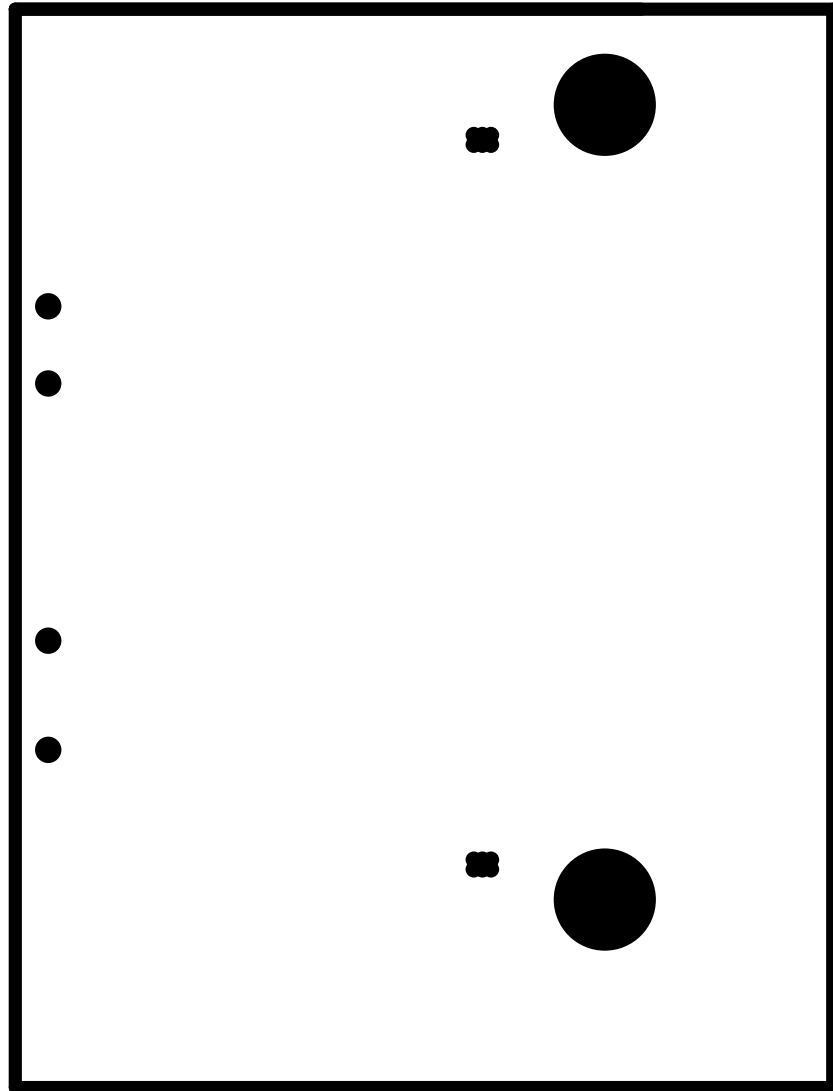
ALL ARTWORK VIEWED FROM TOP SIDE	BOARD #: TIDA-060002	REV: E1	SVN REV: Not In VersionControl
LAYER NAME = GND Plane L2	TID #: TIDA-060002		
PLOT NAME = GND Plane L2	GENERATED : 10/2/2018 9:28:18 AM	TEXAS INSTRUMENTS	



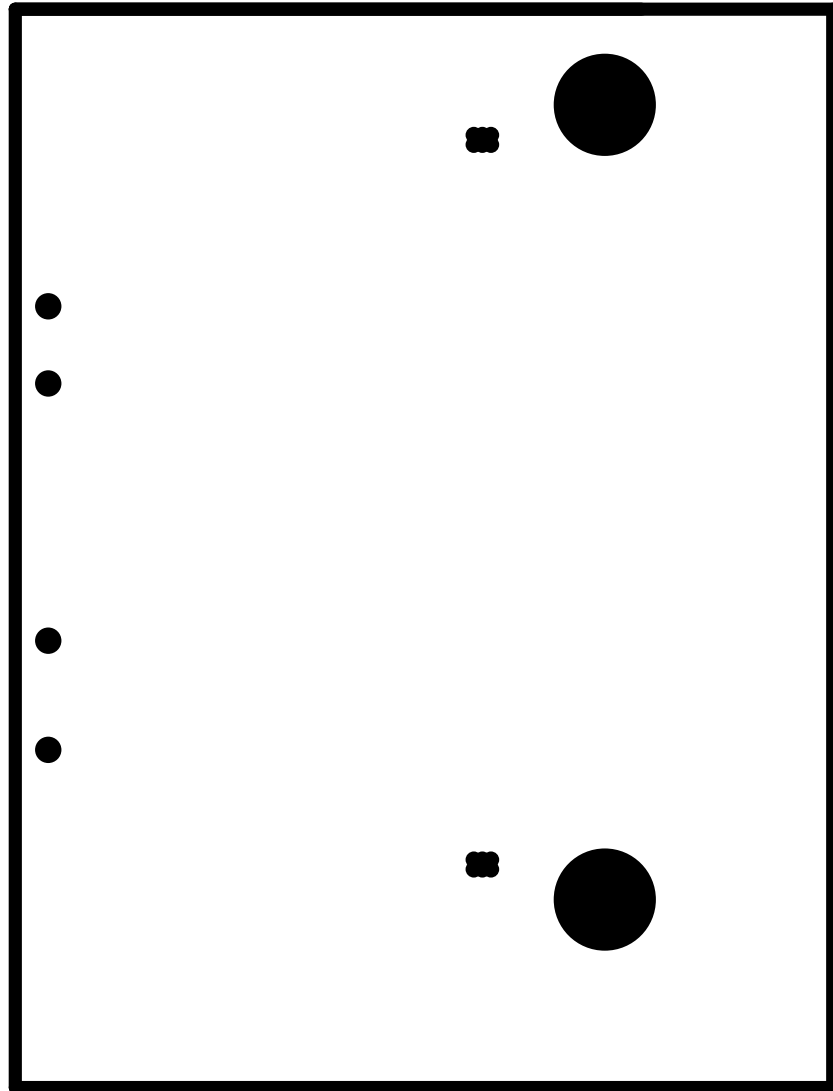
ALL ARTWORK VIEWED FROM TOP SIDE	BOARD #: TIDA-060002	REV: E1	SVN REV: Not In VersionControl
LAYER NAME = GND Plane L3	TID #: TIDA-060002		
PLOT NAME = GND Plane L3	GENERATED : 10/2/2018 9:28:18 AM	TEXAS INSTRUMENTS	



ALL ARTWORK VIEWED FROM TOP SIDE	BOARD #: TIDA-060002	REV: E1	SVN REV: Not In VersionControl
LAYER NAME = GND/Signal L4	TID #: TIDA-060002		
PLOT NAME = GND/Signal L4	GENERATED : 10/2/2018 9:28:19 AM	TEXAS INSTRUMENTS	

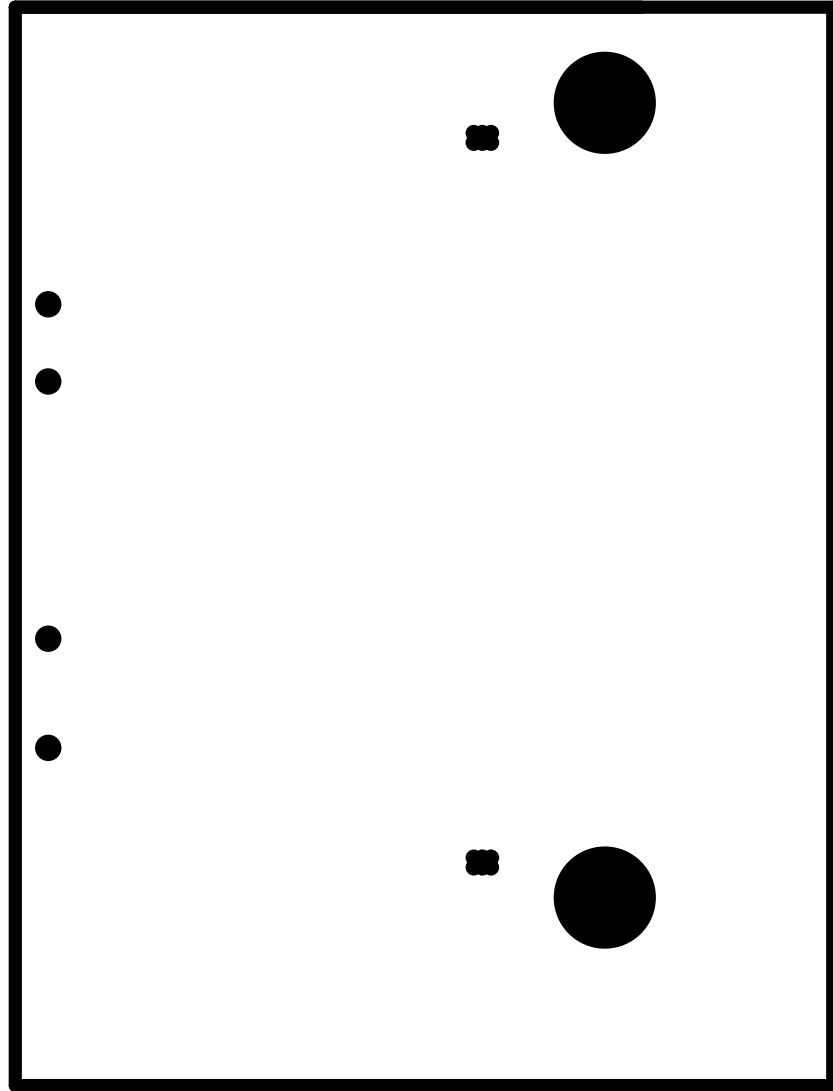


ALL ARTWORK VIEWED FROM TOP SIDE	BOARD #: TIDA-060002	REV: E1	SVN REV: Not In VersionControl
LAYER NAME = GND Plane L5	TID #: TIDA-060002		
PLOT NAME = GND Plane L5	GENERATED : 10/2/2018 9:28:21 AM	TEXAS INSTRUMENTS	

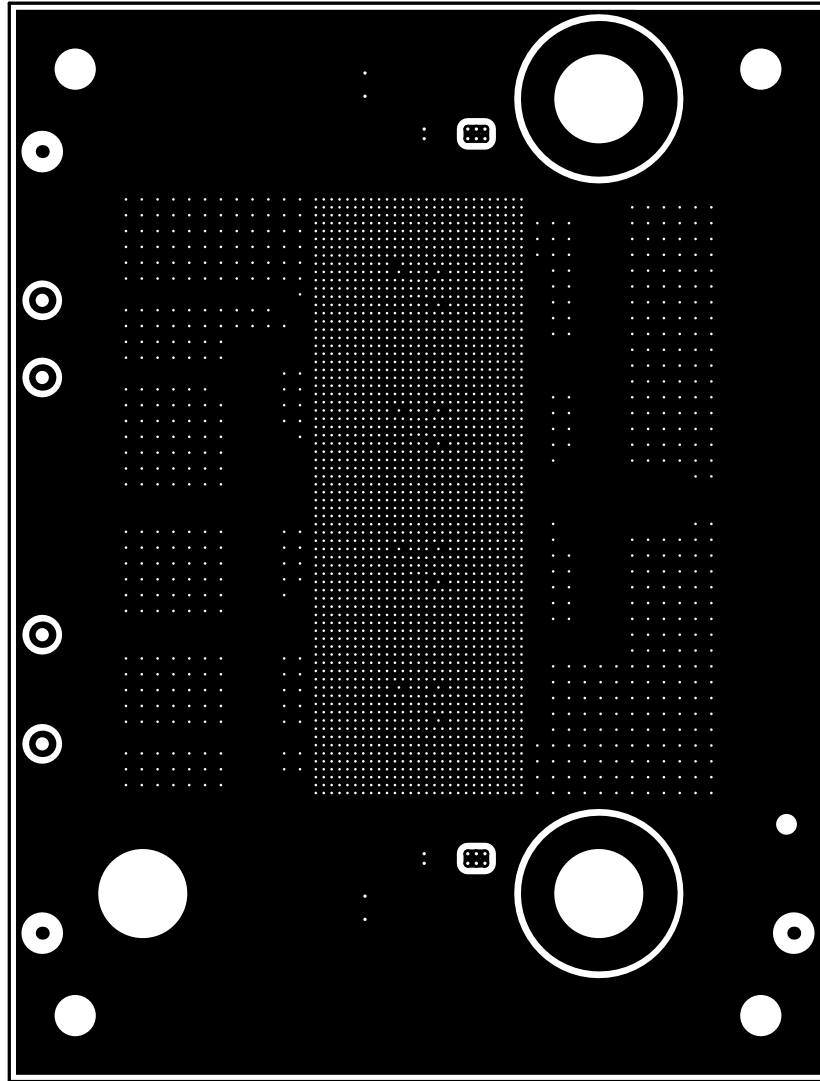


ALL ARTWORK VIEWED FROM TOP SIDE	BOARD #: TIDA-060002	REV: E1	SVN REV: Not In VersionControl
LAYER NAME = GND Plane L6	TID #: TIDA-060002		
PLOT NAME = GND Plane L6	GENERATED : 10/2/2018 9:28:22 AM	TEXAS INSTRUMENTS	

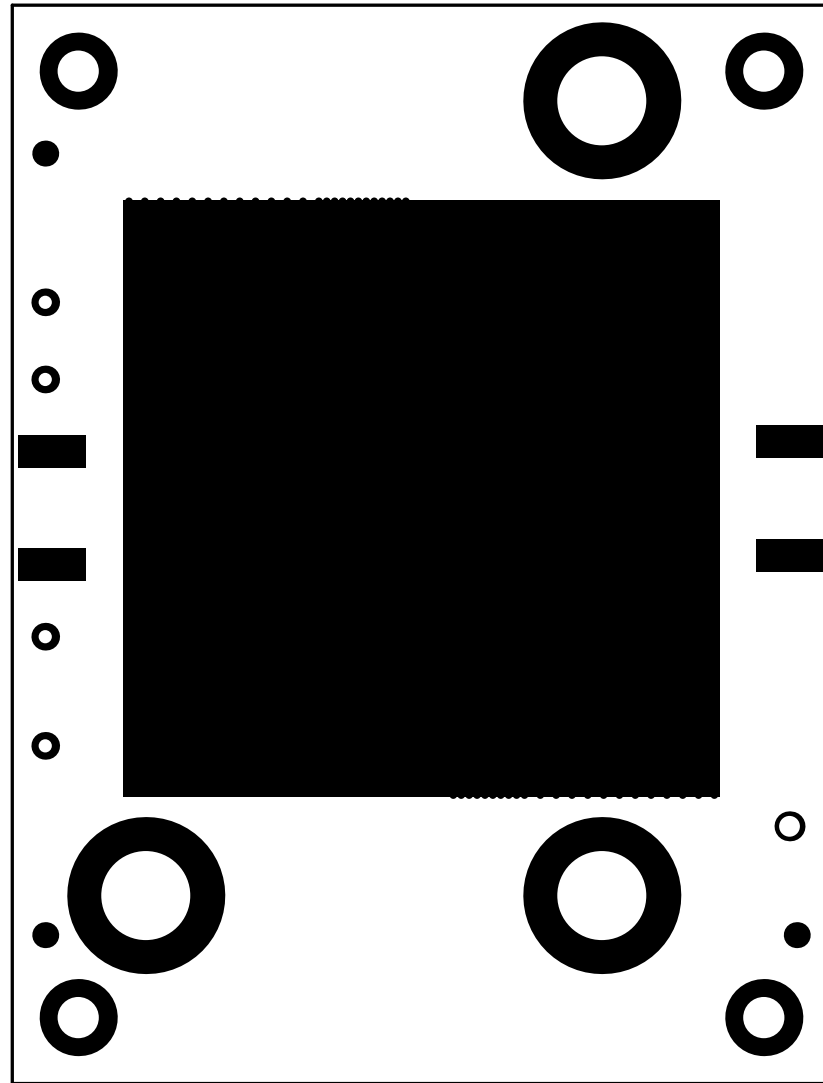




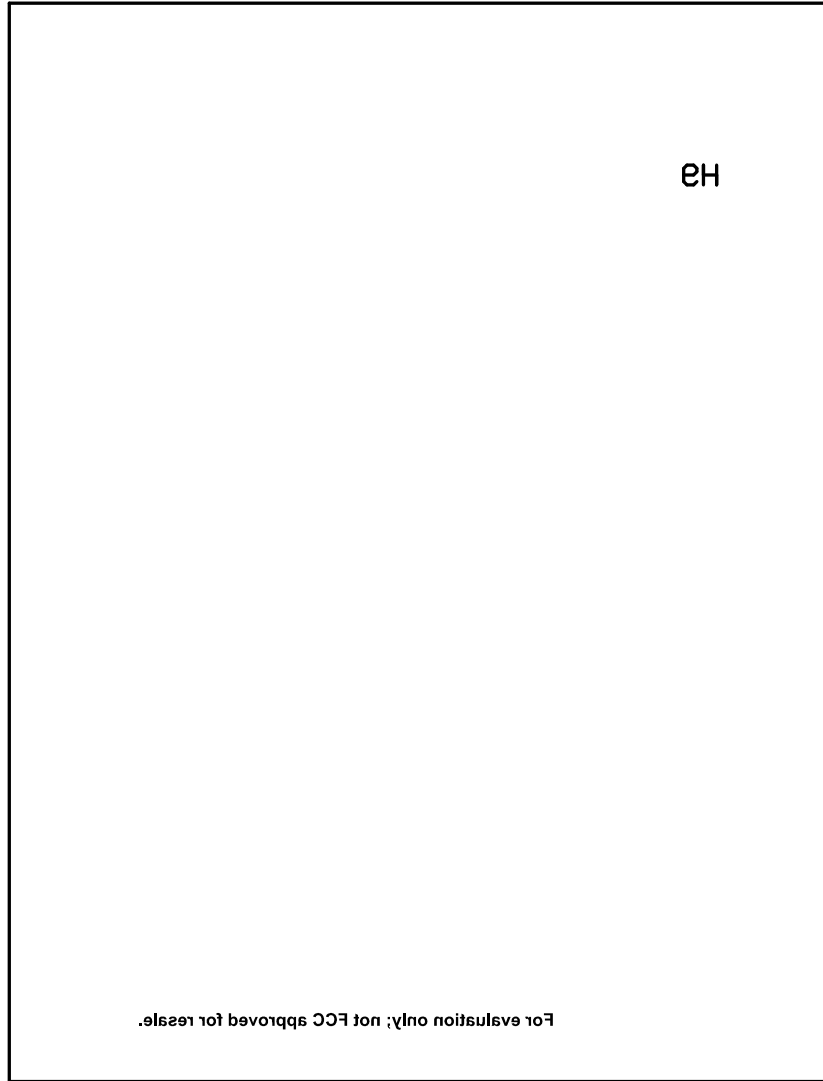
ALL ARTWORK VIEWED FROM TOP SIDE	BOARD #: TIDA-060002	REV: E1	SVN REV: Not In VersionControl
LAYER NAME = GND Plane L7	TID #: TIDA-060002		
PLOT NAME = GND Plane L7	GENERATED : 10/2/2018 9:28:23 AM	TEXAS INSTRUMENTS	



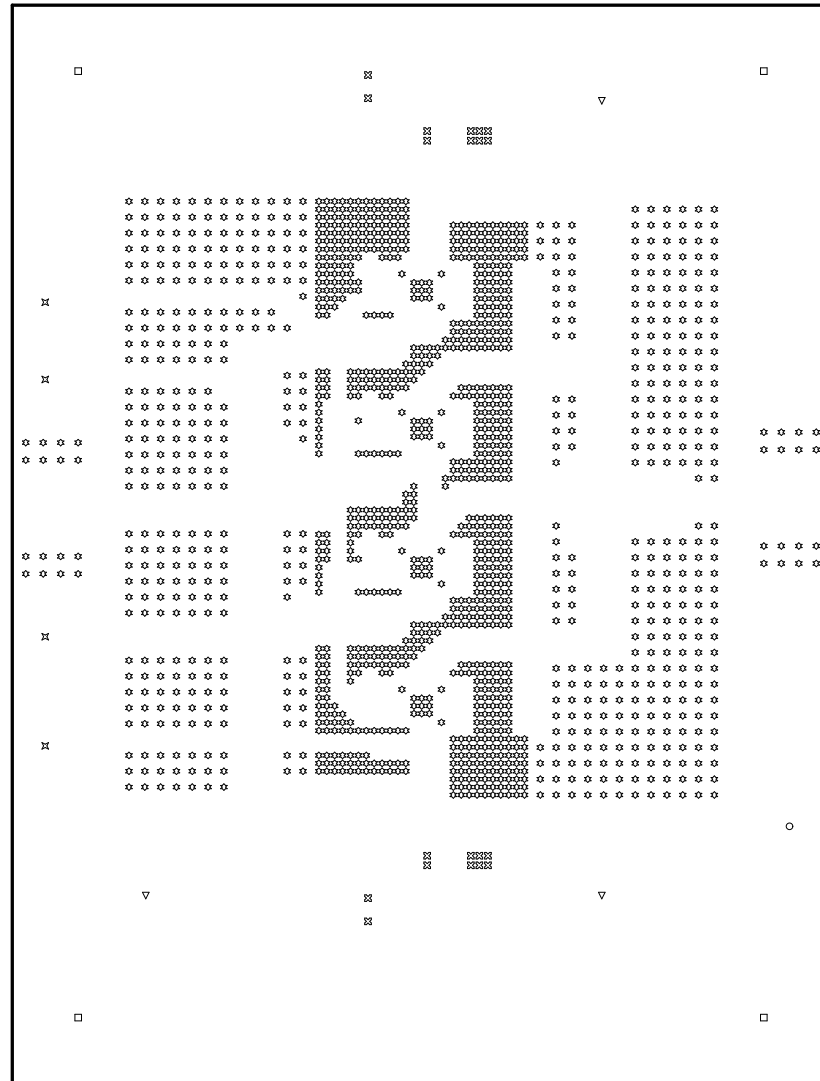
ALL ARTWORK VIEWED FROM TOP SIDE	BOARD #: TIDA-060002	REV: E1	SVN REV: Not In VersionControl
LAYER NAME = Bottom Layer L8	TID #: TIDA-060002		
PLOT NAME = Bottom Layer L8	GENERATED : 10/2/2018 9:28:23 AM	TEXAS INSTRUMENTS	



ALL ARTWORK VIEWED FROM TOP SIDE	BOARD #: TIDA-060002	REV: E1	SVN REV: Not In VersionControl
LAYER NAME = Bottom Solder	TID #: TIDA-060002		
PLOT NAME = Bottom Solder Mask	GENERATED : 10/2/2018 9:28:24 AM	TEXAS INSTRUMENTS	



ALL ARTWORK VIEWED FROM TOP SIDE	BOARD #: TIDA-060002	REV: E1	SVN REV: Not In VersionControl
LAYER NAME = Bottom Overlay	TID #: TIDA-060002		
PLOT NAME = Bottom Overlay	GENERATED : 10/2/2018 9:28:25 AM	TEXAS INSTRUMENTS	

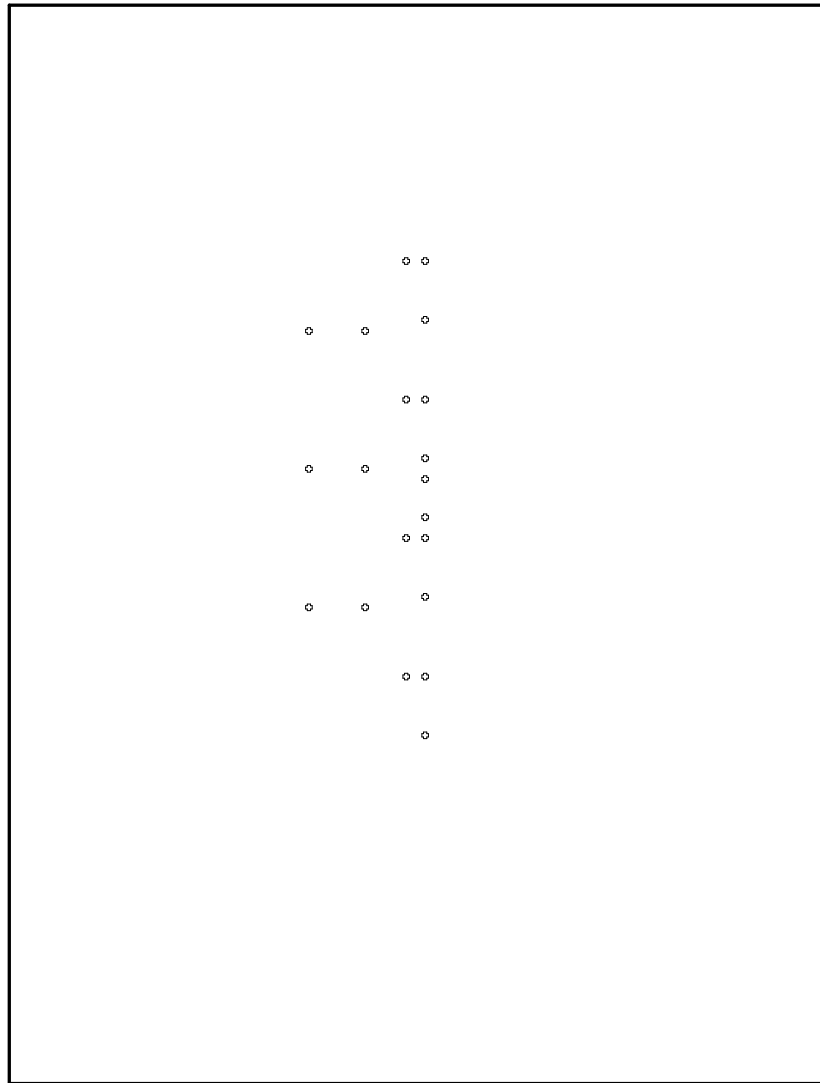


7.87mil (0.200mm) Holes L1 to L8 to be to be plugged with thermal/electrical conductive epoxy of manufacturers choice. Plugged vias to be plated after plugging to present flat surface to devices on L1 and L8, no potholes.

7.87mil (0.200mm) Holes L5 to L8 to be to be plugged with thermal/electrical conductive epoxy of manufacturers choice. Plugged vias to be plated after plugging to present flat surface to devices on L8, no potholes.

Symbol	Quantity	Finished Hole Size	Plated	Hole Type	Drill Layer Pair	Hole Tolerance
⊗	1441	7.87mil (0.200mm)	PTH	Round	Top Layer L1 - Bottom Layer L8	
⊗	20	10.00mil (0.254mm)	PTH	Round	Top Layer L1 - Bottom Layer L8	
⊗	4	40.00mil (1.016mm)	PTH	Round	Top Layer L1 - Bottom Layer L8	
○	1	63.00mil (1.600mm)	PTH	Round	Top Layer L1 - Bottom Layer L8	
□	4	125.00mil (3.175mm)	PTH	Round	Top Layer L1 - Bottom Layer L8	
▽	3	270.00mil (6.858mm)	PTH	Round	Top Layer L1 - Bottom Layer L8	
	1473 Total					

ALL ARTWORK VIEWED FROM TOP SIDE	BOARD #: TIDA-060002	REV: E1	SUN REV: Not In VersionControl
LAYER NAME = Drill Drawing	TID #: TIDA-060002		
PLOT NAME = Drill Drawing L1 - L8	GENERATED : 10/2/2018	9:28:26 AM	TEXAS INSTRUMENTS

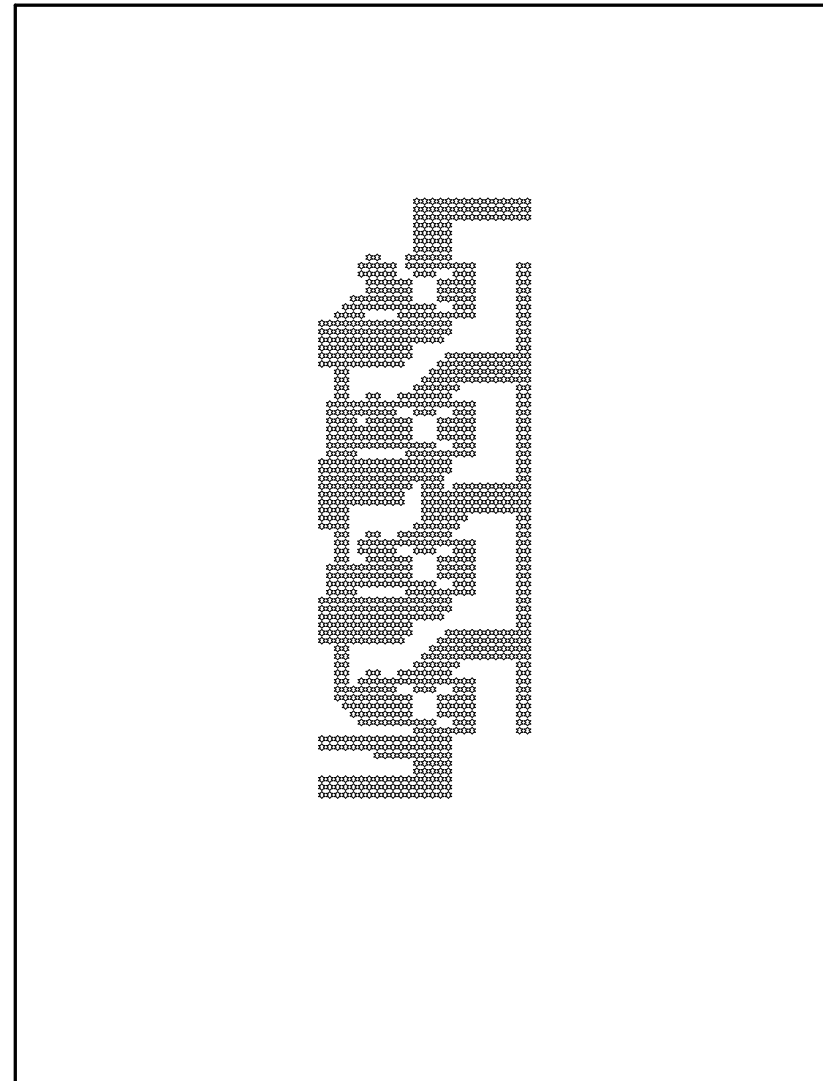


7.87mil (0.200mm) Holes L1 to L8 to be to be plugged with thermal/electrical conductive epoxy of manufacturers choice. Plugged vias to be plated after plugging to present flat surface to devices on L1 and L8, no potholes.

7.87mil (0.200mm) Holes L5 to L8 to be to be plugged with thermal/electrical conductive epoxy of manufacturers choice. Plugged vias to be plated after plugging to present flat surface to devices on L8, no potholes.

Symbol	Quantity	Finished Hole Size	Plated	Hole Type	Drill Layer Pair	Hole Tolerance
⊕	20	10.01mil (0.254mm)	PTH	Round	Top Layer L1 - GND/Signal L4	
	20 Total					

ALL ARTWORK VIEWED FROM TOP SIDE	BOARD #: TIDA-060002	REV: E1	SUN REV: Not In VersionControl
LAYER NAME = Drill Drawing	TID #: TIDA-060002		
PLOT NAME = Drill Drawing L1 - L4	GENERATED : 10/2/2018	9:28:31 AM	TEXAS INSTRUMENTS

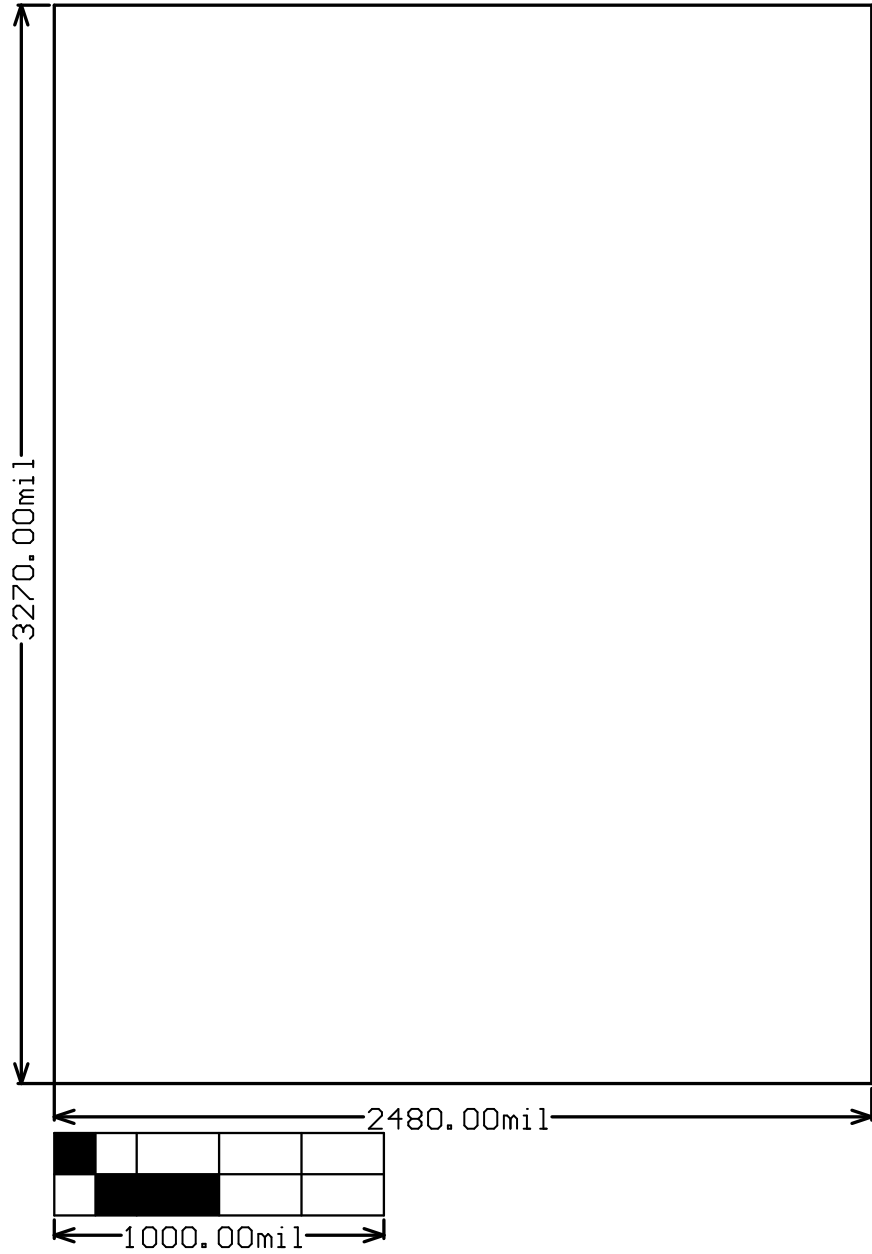


7.87mil (0.200mm) Holes L1 to L8 to be to be plugged with thermal/electrical conductive epoxy of manufacturers choice. Plugged vias to be plated after plugging to present flat surface to devices on L1 and L8, no potholes.

7.87mil (0.200mm) Holes L5 to L8 to be to be plugged with thermal/electrical conductive epoxy of manufacturers choice. Plugged vias to be plated after plugging to present flat surface to devices on L8, no potholes.

Symbol	Quantity	Finished Hole Size	Plated	Hole Type	Drill Layer Pair	Hole Tolerance
⚙	1159	7.87mil (0.200mm)	PTH	Round	GND Plane L5 - Bottom Layer L8	
	1159 Total					

ALL ARTWORK VIEWED FROM TOP SIDE	BOARD #: TIDA-060002	REV: E1	SUN REV: Not In VersionControl
LAYER NAME = Drill Drawing	TID #: TIDA-060002		
PLOT NAME = Drill Drawing L5 - L8	GENERATED : 10/2/2018	9:28:32 AM	TEXAS INSTRUMENTS



ALL ARTWORK VIEWED FROM TOP SIDE	BOARD #: TIDA-060002	REV: E1	SVN REV: Not In VersionControl
LAYER NAME = M2 Board Dimensions	TID #: TIDA-060002		
PLOT NAME = Board Dimensions	GENERATED : 10/2/2018 9:28:35 AM	TEXAS INSTRUMENTS	



## IMPORTANT NOTICE AND DISCLAIMER

TI PROVIDES TECHNICAL AND RELIABILITY DATA (INCLUDING DATASHEETS), DESIGN RESOURCES (INCLUDING REFERENCE DESIGNS), APPLICATION OR OTHER DESIGN ADVICE, WEB TOOLS, SAFETY INFORMATION, AND OTHER RESOURCES "AS IS" AND WITH ALL FAULTS, AND DISCLAIMS ALL WARRANTIES, EXPRESS AND IMPLIED, INCLUDING WITHOUT LIMITATION ANY IMPLIED WARRANTIES OF MERCHANTABILITY, FITNESS FOR A PARTICULAR PURPOSE OR NON-INFRINGEMENT OF THIRD PARTY INTELLECTUAL PROPERTY RIGHTS.

These resources are intended for skilled developers designing with TI products. You are solely responsible for (1) selecting the appropriate TI products for your application, (2) designing, validating and testing your application, and (3) ensuring your application meets applicable standards, and any other safety, security, or other requirements. These resources are subject to change without notice. TI grants you permission to use these resources only for development of an application that uses the TI products described in the resource. Other reproduction and display of these resources is prohibited. No license is granted to any other TI intellectual property right or to any third party intellectual property right. TI disclaims responsibility for, and you will fully indemnify TI and its representatives against, any claims, damages, costs, losses, and liabilities arising out of your use of these resources.

TI's products are provided subject to TI's Terms of Sale ([www.ti.com/legal/termsofsale.html](http://www.ti.com/legal/termsofsale.html)) or other applicable terms available either on [ti.com](http://ti.com) or provided in conjunction with such TI products. TI's provision of these resources does not expand or otherwise alter TI's applicable warranties or warranty disclaimers for TI products.

Mailing Address: Texas Instruments, Post Office Box 655303, Dallas, Texas 75265  
Copyright © 2018, Texas Instruments Incorporated