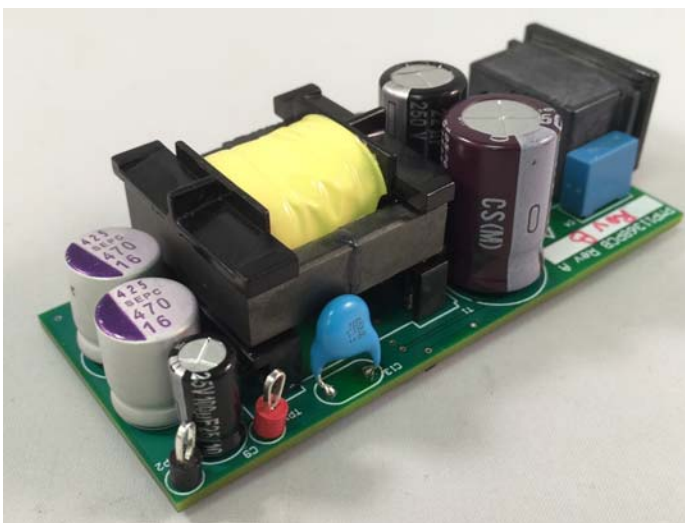
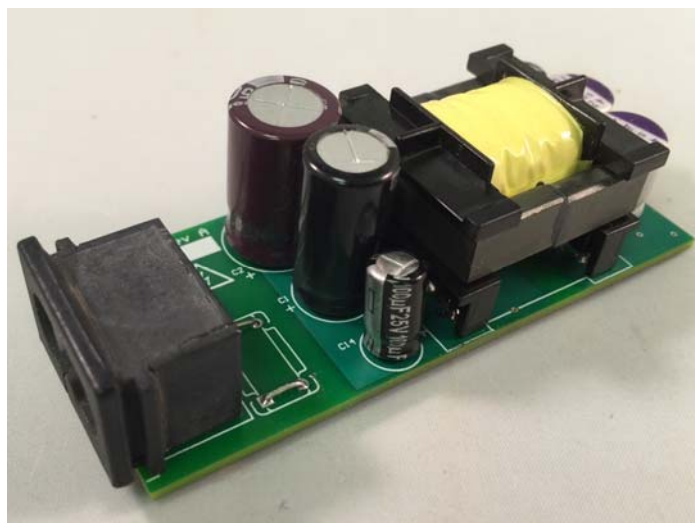
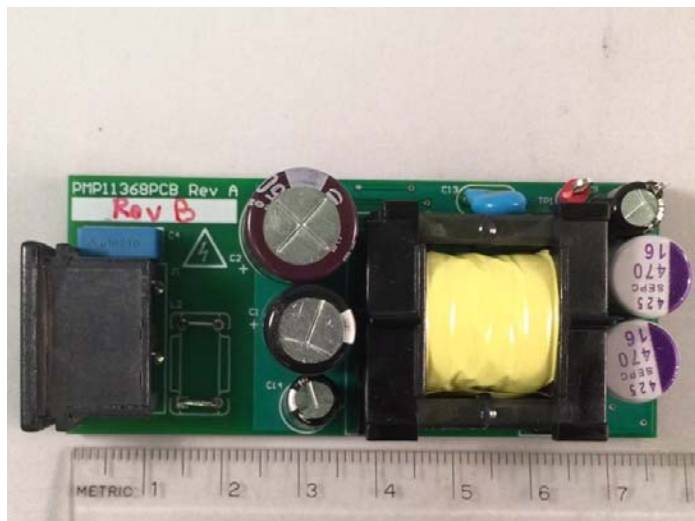


## 1 Photos

The photographs below show the PMP11368 Rev B prototype assembly. This circuit was built using a PMP11368 Rev A PCB.

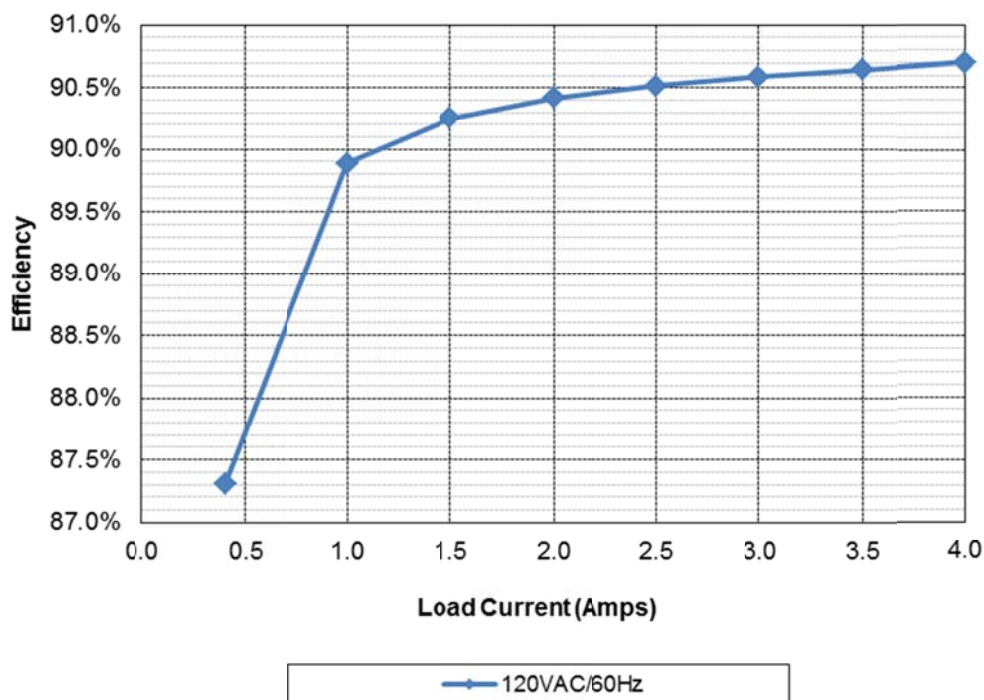


## 2 Standby Power (No Load)

Input Voltage	Input Power
120VAC/60Hz	105.3mW

### 3 Efficiency

#### 3.1 Chart



#### 3.2 Average Efficiency

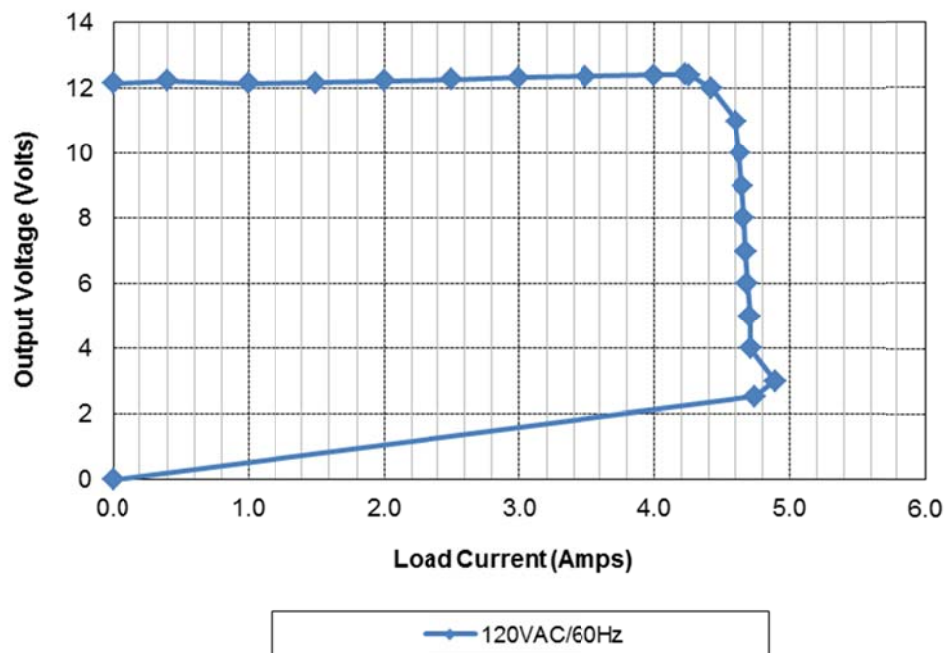
Vin	Pin	Vout	Iout	Load	Efficiency	Avg. Eff.
<b>120VAC/60Hz</b>	5.63	12.22	0.402	10%	87.30%	
	13.52	12.15	1.000	25%	89.89%	<b>90.40%</b>
	27.03	12.22	2.000	50%	90.42%	
	40.80	12.32	3.000	75%	90.59%	
	54.73	12.41	4.000	100%	90.70%	

#### 3.3 Efficiency Data

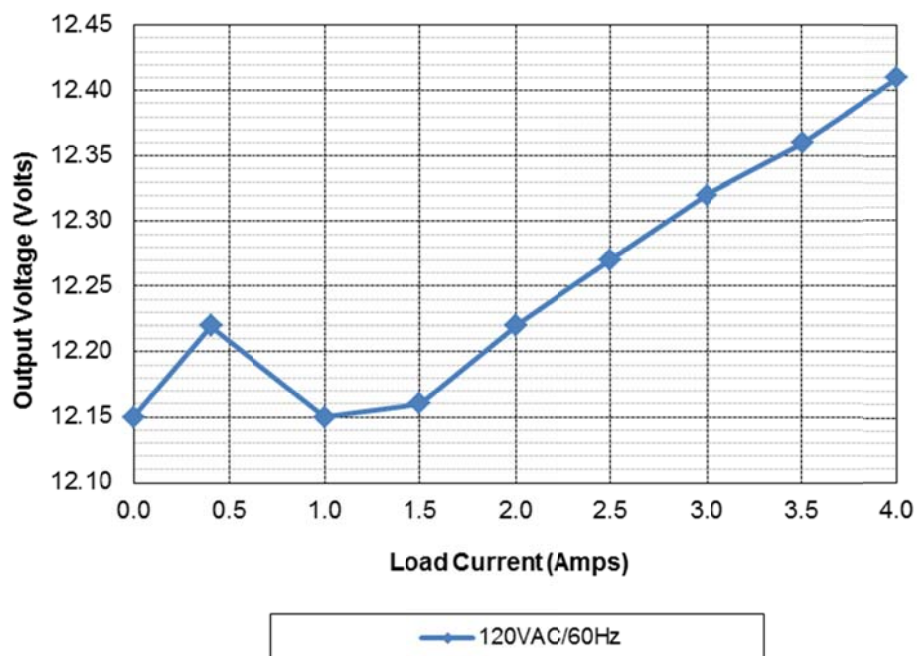
Iout	Vout	Vin	Iin	Pin	PF	Pout	Losses	Efficiency
0.000	12.15	120.0	0.00698	0.1053		0.00	0.1053	0.0%
0.402	12.22	120.0	0.1457	5.627	0.322	4.91	0.71	87.3%
1.000	12.15	120.0	0.305	13.517	0.369	12.15	1.37	89.9%
1.500	12.16	120.0	0.408	20.21	0.413	18.24	1.97	90.3%
2.000	12.22	120.0	0.509	27.03	0.443	24.44	2.59	90.4%
2.500	12.27	120.0	0.608	33.89	0.465	30.68	3.22	90.5%
3.000	12.32	120.0	0.703	40.80	0.484	36.96	3.84	90.6%
3.501	12.36	120.0	0.795	47.74	0.501	43.27	4.47	90.6%
4.000	12.41	120.0	0.887	54.73	0.515	49.64	5.09	90.7%

## 4 Regulation

### 4.1 V-I Curve

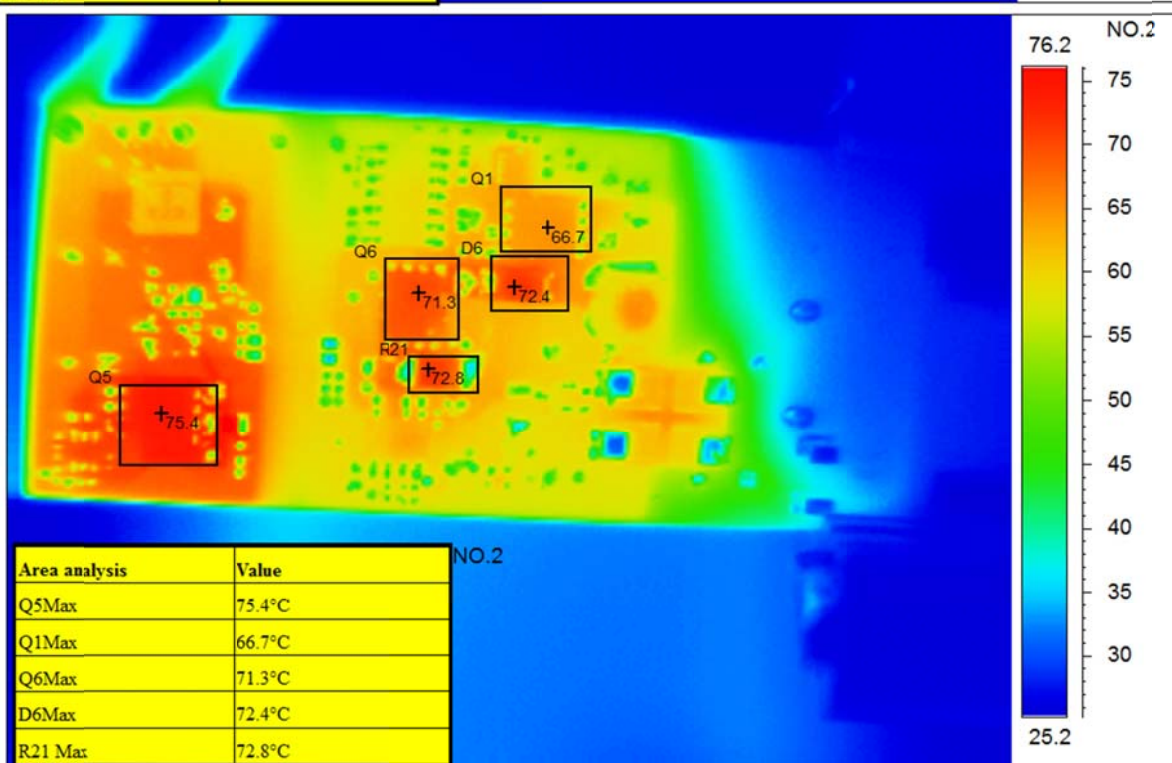
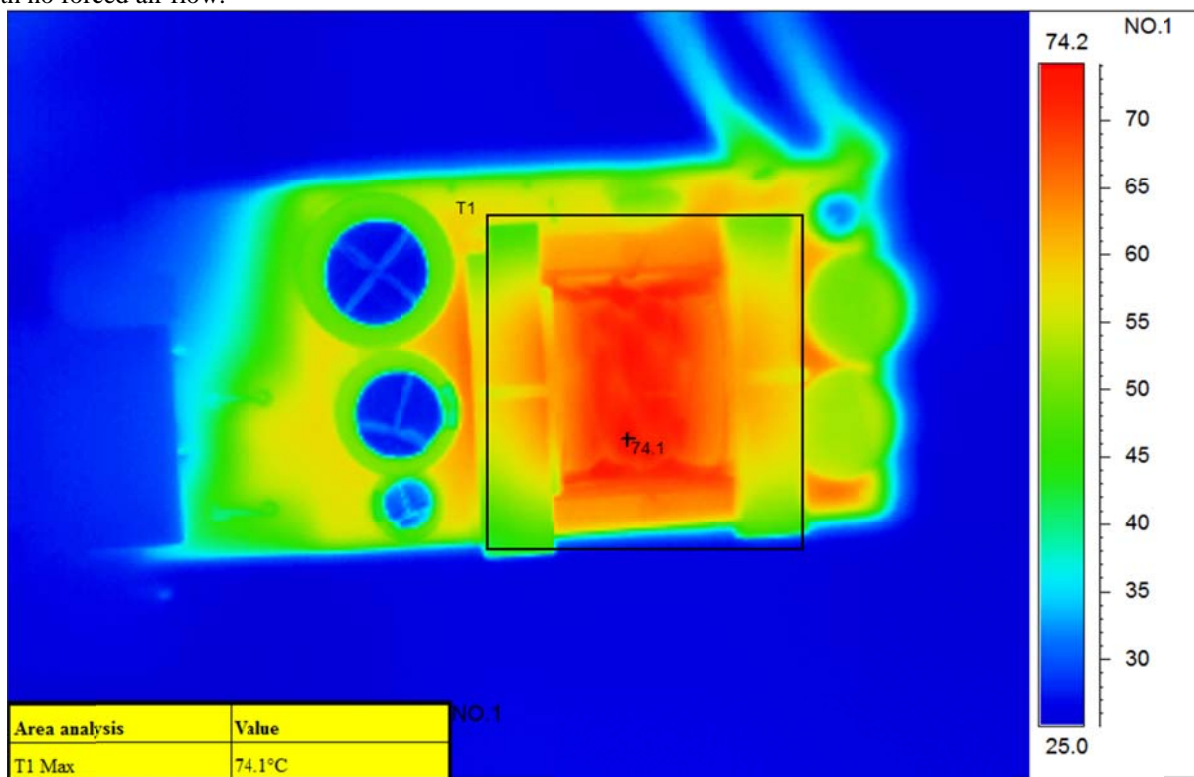


### 4.2 CV Mode



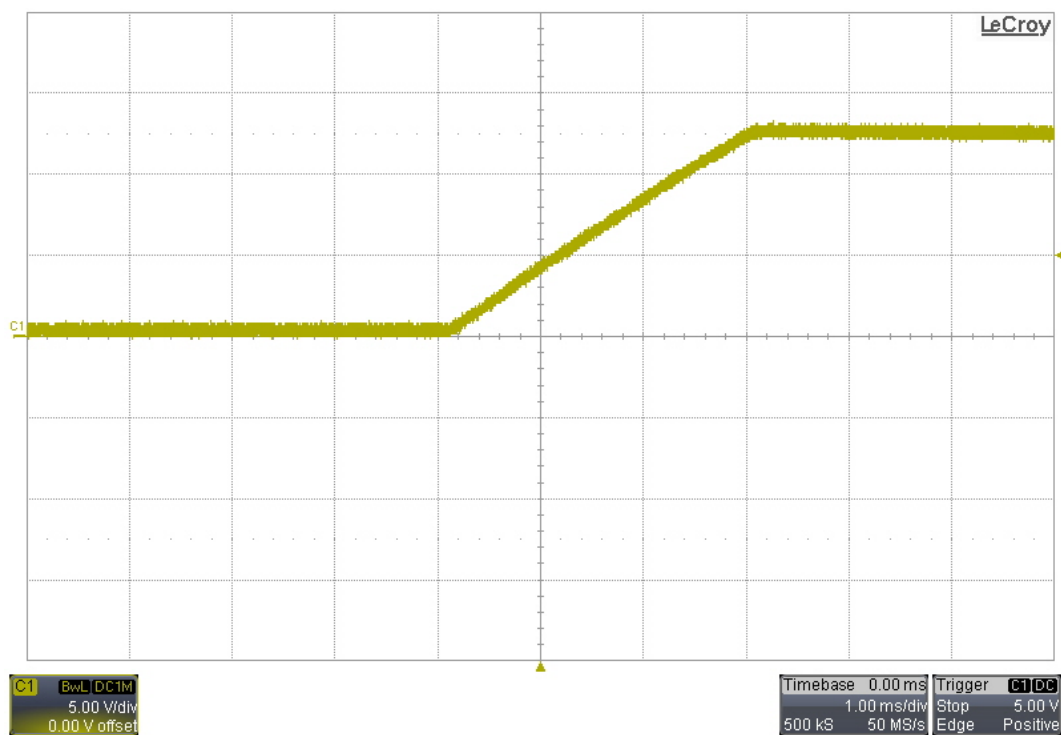
## 5 Thermal Images

The thermal images below show the assembly with loaded with 4A with a 120VAC/60Hz input. The ambient temperature was 25°C, with no forced air flow.

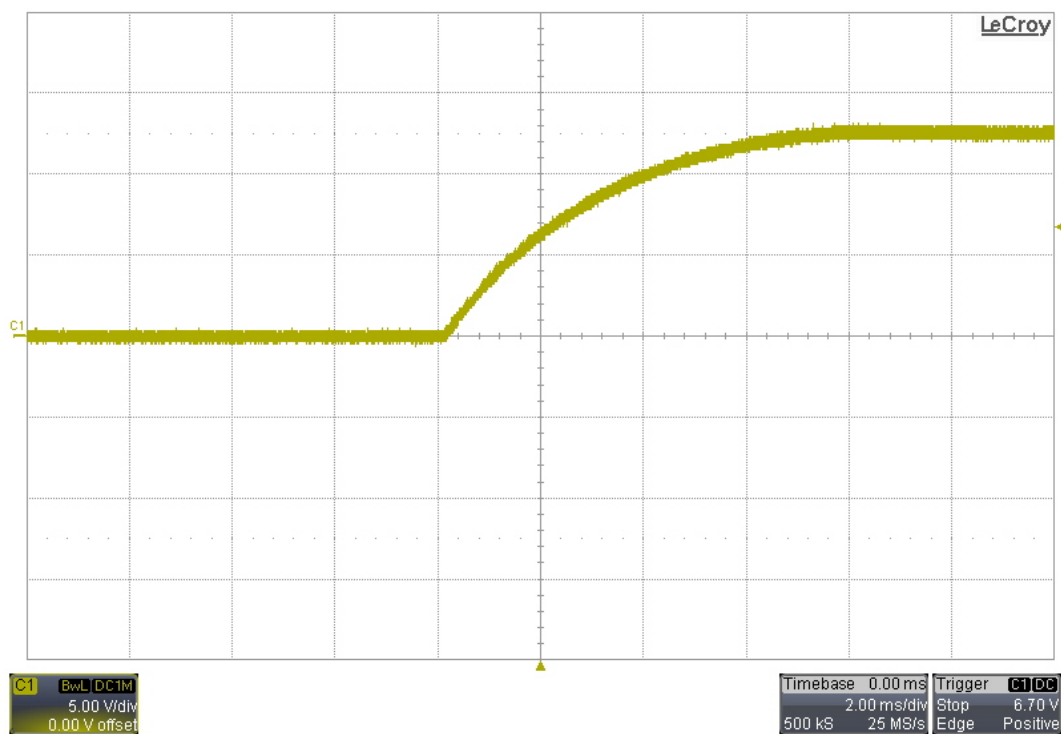


## 6 Startup

### 6.1 120VAC/60Hz –0A Load



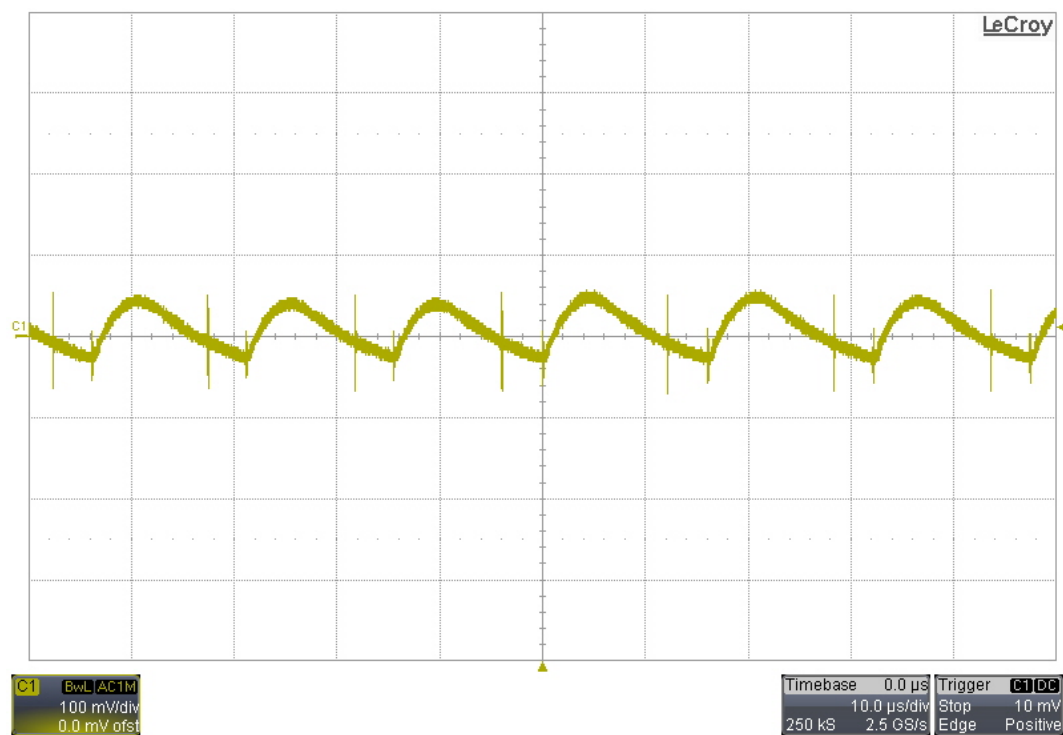
### 6.2 120VAC/60Hz –3Ω Load





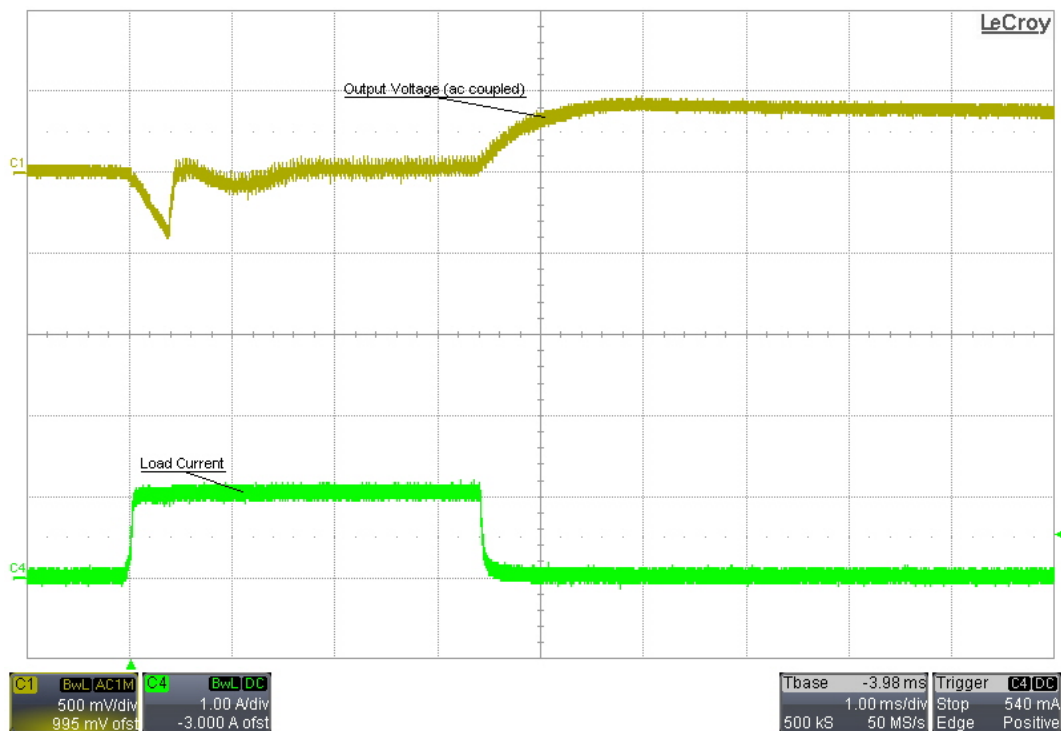
## 7 Output Ripple Voltage

### 7.1 120VAC/60Hz –4A Load

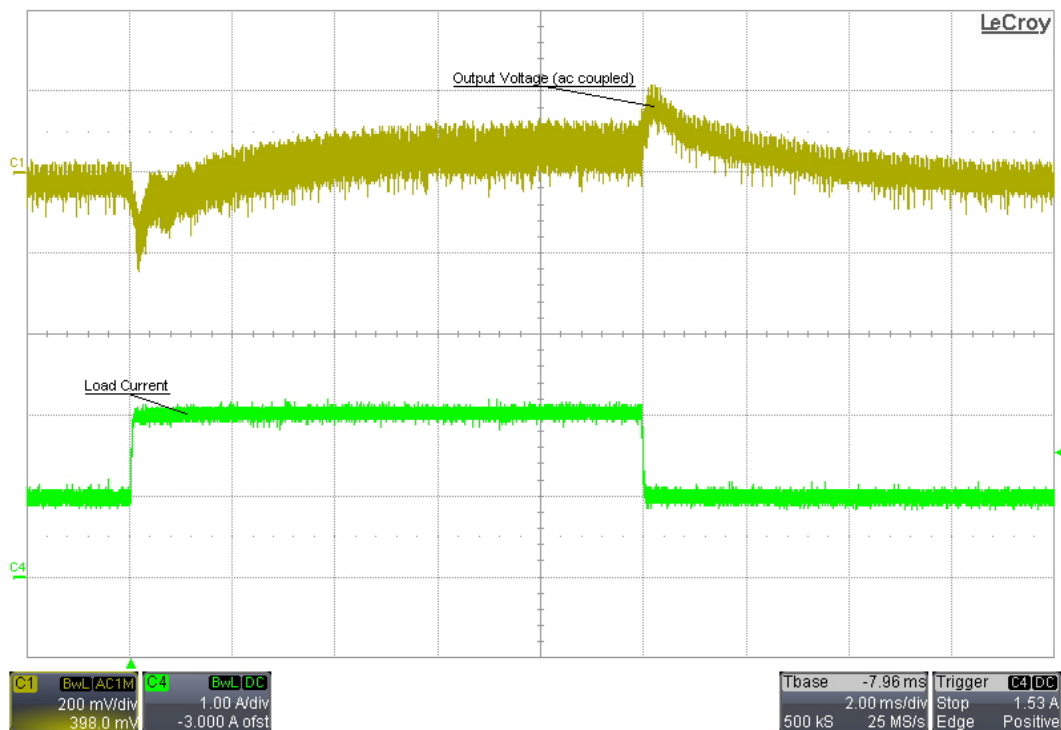


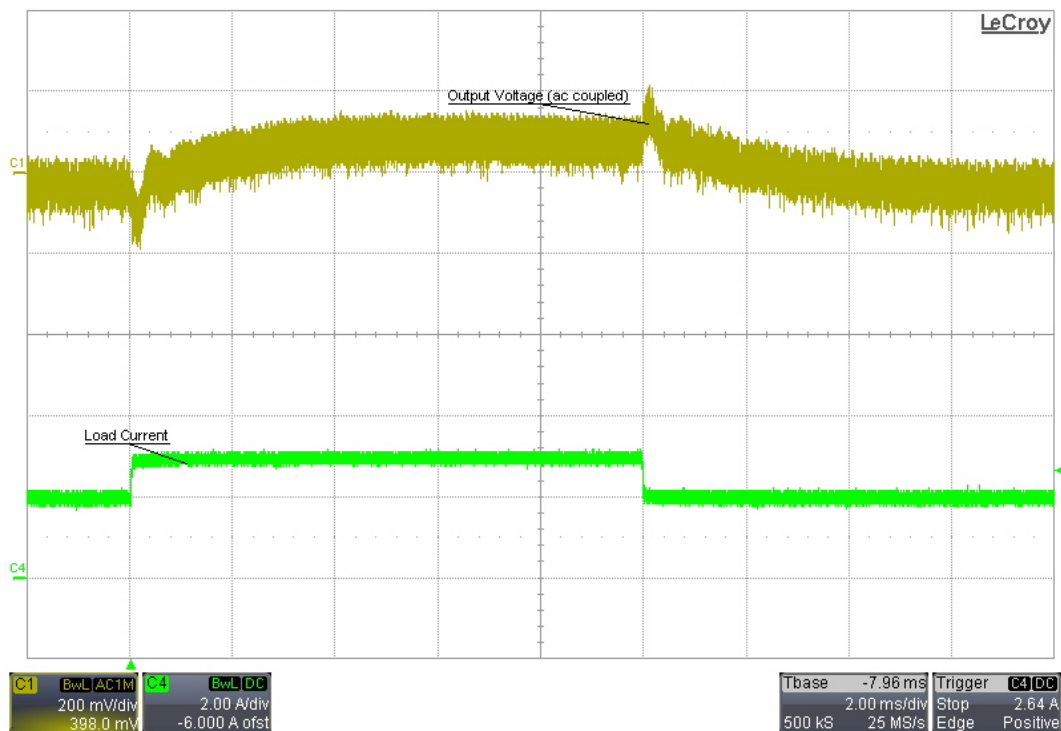
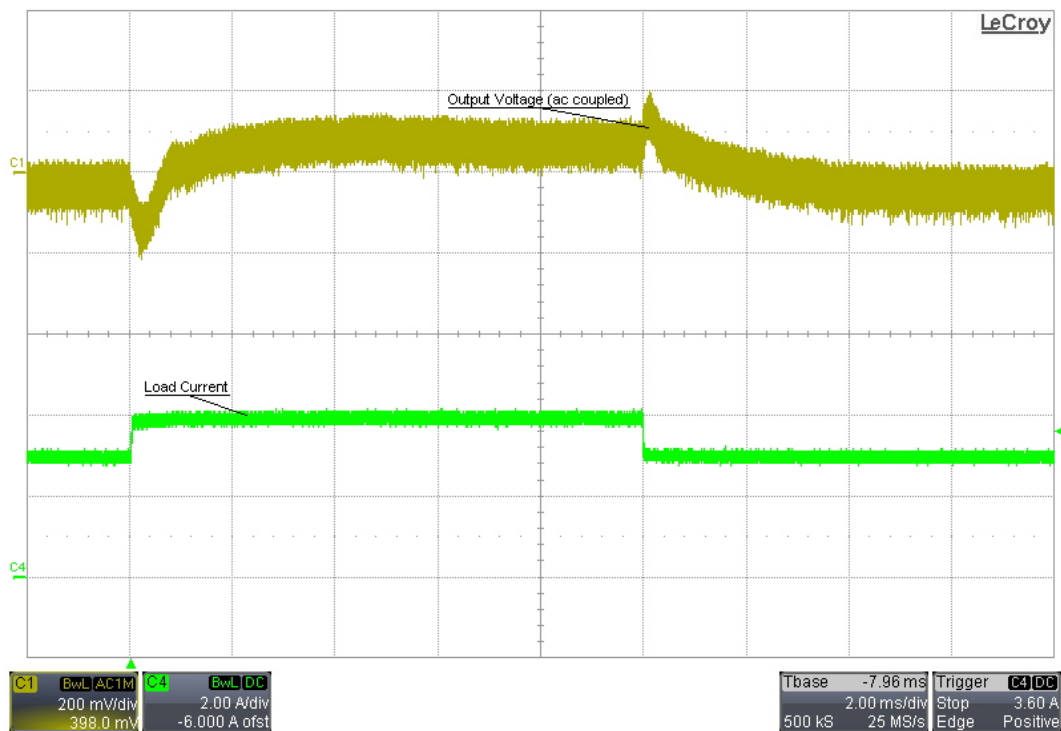
## 8 Load Transients

### 8.1 0% to 25% Transient; 120VAC/60Hz Input



### 8.2 25% to 50% Transient; 120VAC/60Hz Input



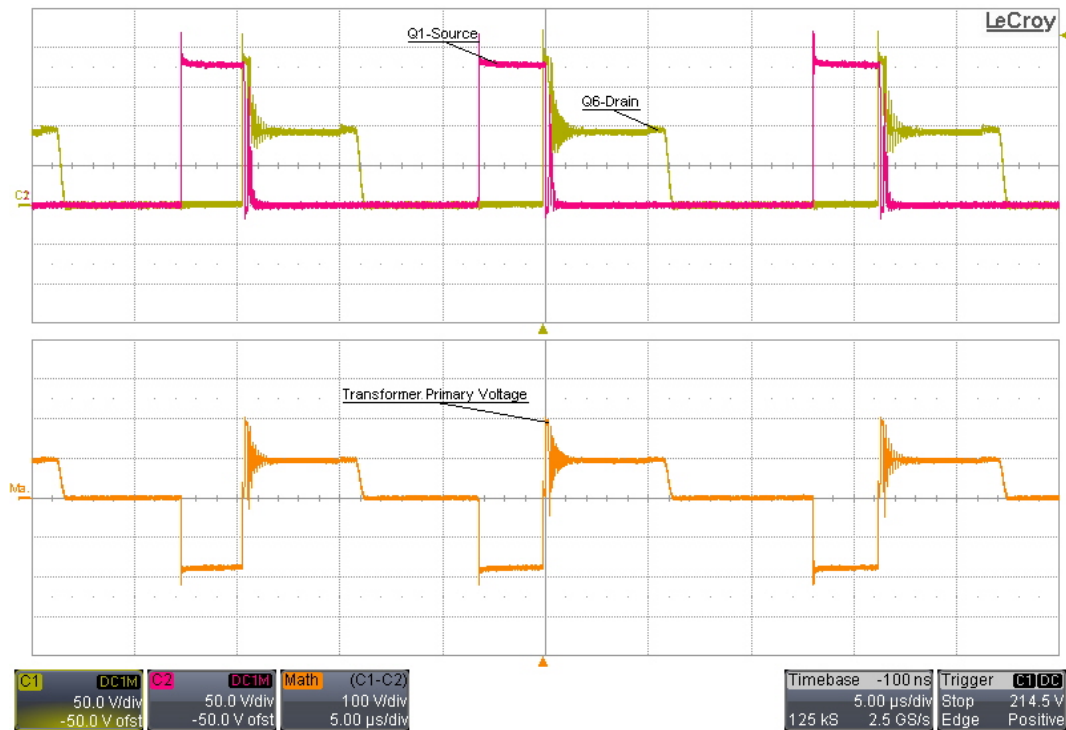
**8.3 50% to 75% Transient; 120VAC/60Hz Input****8.4 75% to 100% Transient; 120VAC/60Hz Input**



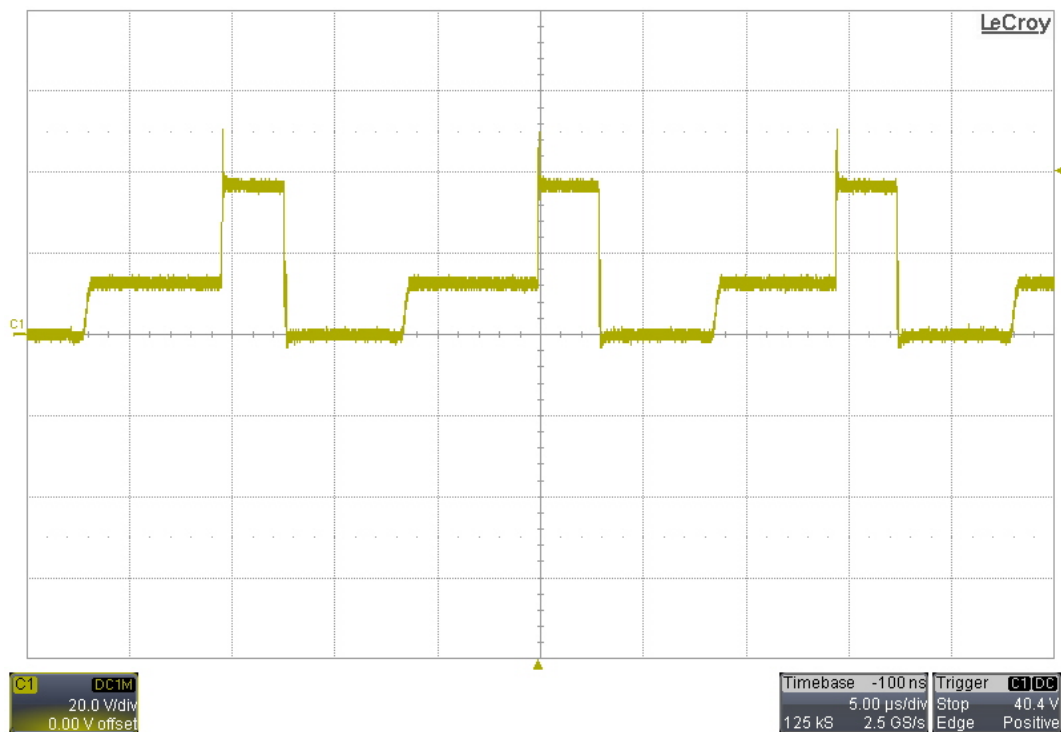
## 9 Switching Waveforms

The input was 130VAC/60Hz, and the output was loaded with 4A.

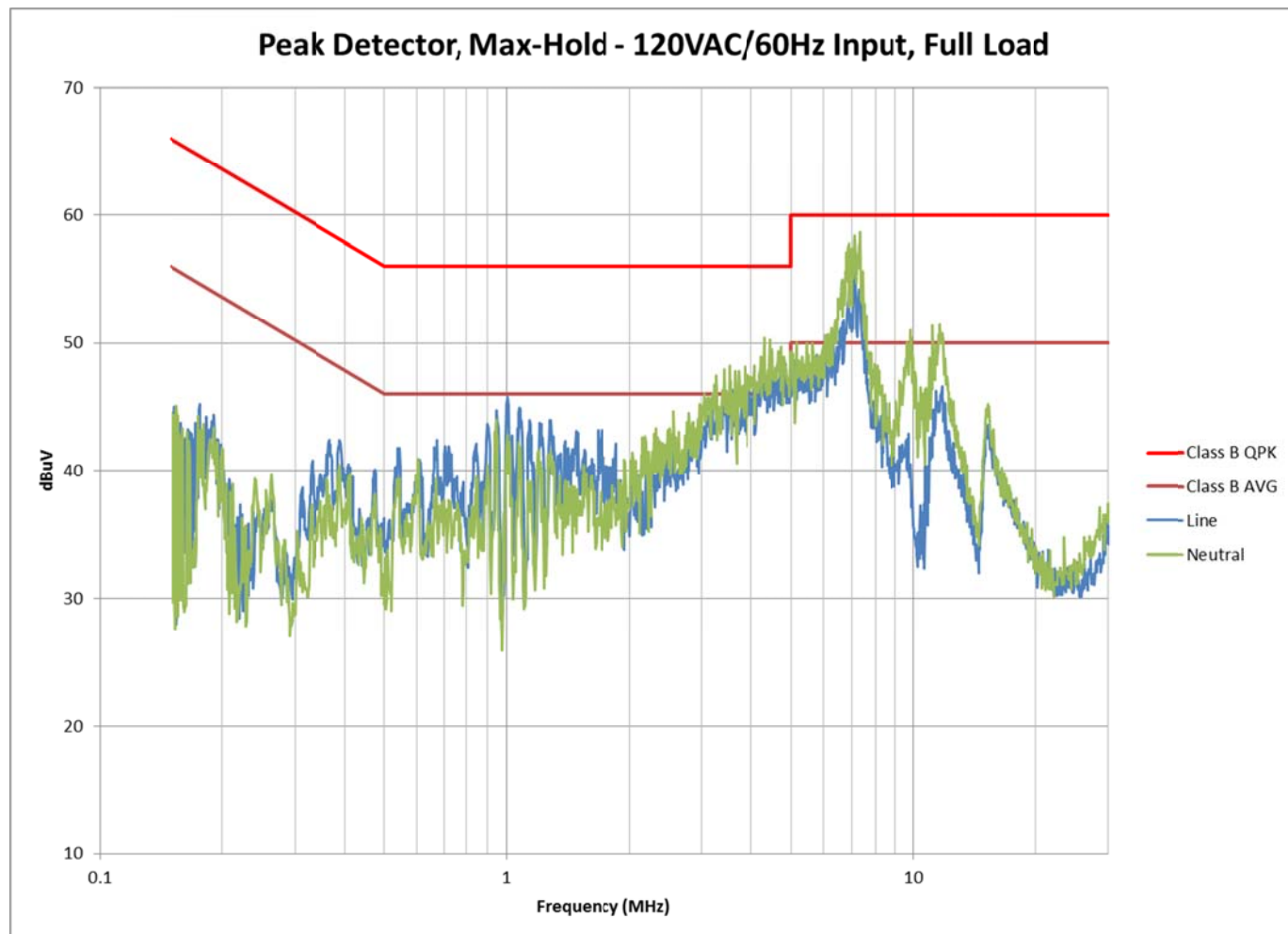
### 9.1 Primary-side Waveforms



### 9.2 Drain of Synchronous Rectifier – Q5



## 10 Conducted Emissions



## IMPORTANT NOTICE AND DISCLAIMER

TI PROVIDES TECHNICAL AND RELIABILITY DATA (INCLUDING DATASHEETS), DESIGN RESOURCES (INCLUDING REFERENCE DESIGNS), APPLICATION OR OTHER DESIGN ADVICE, WEB TOOLS, SAFETY INFORMATION, AND OTHER RESOURCES "AS IS" AND WITH ALL FAULTS, AND DISCLAIMS ALL WARRANTIES, EXPRESS AND IMPLIED, INCLUDING WITHOUT LIMITATION ANY IMPLIED WARRANTIES OF MERCHANTABILITY, FITNESS FOR A PARTICULAR PURPOSE OR NON-INFRINGEMENT OF THIRD PARTY INTELLECTUAL PROPERTY RIGHTS.

These resources are intended for skilled developers designing with TI products. You are solely responsible for (1) selecting the appropriate TI products for your application, (2) designing, validating and testing your application, and (3) ensuring your application meets applicable standards, and any other safety, security, or other requirements. These resources are subject to change without notice. TI grants you permission to use these resources only for development of an application that uses the TI products described in the resource. Other reproduction and display of these resources is prohibited. No license is granted to any other TI intellectual property right or to any third party intellectual property right. TI disclaims responsibility for, and you will fully indemnify TI and its representatives against, any claims, damages, costs, losses, and liabilities arising out of your use of these resources.

TI's products are provided subject to TI's Terms of Sale (<https://www.ti.com/legal/termsofsale.html>) or other applicable terms available either on [ti.com](https://www.ti.com) or provided in conjunction with such TI products. TI's provision of these resources does not expand or otherwise alter TI's applicable warranties or warranty disclaimers for TI products.

Mailing Address: Texas Instruments, Post Office Box 655303, Dallas, Texas 75265  
Copyright © 2021, Texas Instruments Incorporated