



DRV2634EVM-DC User's Guide

Contents

1	Export Control Notice	3
2	Description	3
3	Specifications	3
4	Software	4
5	Device Configuration	4
6	Digital Audio Interfaces	9
7	EVM Schematics	10
8	EVM Layer Plots	11
9	Bill of Materials	14

List of Figures

1	Requesting PPC3 Access	4
2	Default Jumper Settings	4
3	Address Select	5
4	Mono Setup.....	5
5	Windows Playback Devices	6
6	Texas Instruments USB Audio Device Control Panel.....	6
7	Windows Playback device Sample Rate	7
8	Stereo Setup	7
9	Windows Playback Devices	8
10	Texas Instruments USB Audio Device Control Panel.....	8
11	Windows Playback device Sample Rate	9
12	EVM Schematic	10
13	DRV2634EVM-DC Top Assembly	11
14	DRV2634EVM-DC Top Silk Screen	11
15	DRV2634EVM-DC Top Solder Mask	11
16	DRV2634EVM-DC Top Copper	11
17	DRV2634EVM-DC Copper Layer 2	11
18	DRV2634EVM-DC Copper Layer 3	11
19	DRV2634EVM-DC Copper Layer 4	12
20	DRV2634EVM-DC Copper Layer 5	12
21	DRV2634EVM-DC Bottom Copper	12
22	DRV2634EVM-DC Bottom Solder	12
23	DRV2634EVM-DC Bottom Silk Screen	12
24	DRV2634EVM-DC Bottom Assembly	12

List of Tables

1	Specifications.....	3
2	Default Jumper Settings	4

3	Address Select Jumpers	5
4	Bill of Materials	14

Trademarks

PurePath is a trademark of Texas Instruments.
Microsoft, Windows are trademarks of Microsoft Corporation.
All other trademarks are the property of their respective owners.

1 Export Control Notice

Recipient agrees to not knowingly export or re-export, directly or indirectly, any product or technical data (as defined by the U.S., EU, and other Export Administration Regulations) including software, or any controlled product restricted by other applicable national regulations, received from disclosing party under nondisclosure obligations (if any), or any direct product of such technology, to any destination to which such export or re-export is restricted or prohibited by U.S. or other applicable laws, without obtaining prior authorization from U.S. Department of Commerce and other competent Government authorities to the extent required by those laws.

2 Description

The DRV2634EVM-DC is designed to demonstrate the performance of DRV2634 and TAS2562 in a stereo configuration. The design utilizes the PPC3-EVM-MB hardware to provide an interface and supply voltages to the EVM. The TAS2562 is a mono, digital-input, Class-D audio amplifier optimized for efficiently driving high peak power into small loudspeaker applications. The DRV2634 is a mono, digital-input class-D amplifier optimized for haptic applications. The Class-D amplifier is capable of delivering 6 W of peak power into a 4 Ω load at a battery voltage of 4.2 V. Up to four devices can share a common bus via I2S/TDM + I²C interfaces.

DRV2634EVM-DC used in conjunction with PPC3-EVM-MB supports evaluation and development with the DRV2634 device through the following interfaces:

- USB Interface
- Software control via PurePath™ Console 3 (PPC 3) GUI, USB-HID
- USB-class audio device, compatible with Microsoft™Windows™ 7+
- External 100 – mil headers
- PSIA - I2S/TDM interface
- I²C
- Hardware Shutdown Control
- Interrupt Output

NOTE: Please refer to PPC3-EVM-MB User's Guide ([SLEU120](#)) for detailed configuration details.

3 Specifications

[Table 1](#) lists the supply, input, and output requirements for DRV2634.

Table 1. Specifications

Supply Voltage - VBAT	2.7 to 5.5 V
Supply Voltage - VDD	1.65 to 1.95 V
Supply Voltage - PVDD (external mode only)	VBAT to 16 V
Input Logic	VDD
Output Power	6 W
USB, USB class-audio	Micro-USB

NOTE: PPC3-EVM-MB supports a VBAT range from 4.5 to 26 V. To apply a VBAT supply in the range of 2.7 to 4.5 V, it is highly recommended to remove Jumpers J3 and J6 and to apply this voltage directly to pin 2 of the respective header while simultaneously powering PPC3-EVM-MB with 5 V. Otherwise it is possible that on-board supplies may collapse.

4 Software

The DRV2634 can be easily configured with PPC3 running the DRV2634 plug-in. To request access to the software first request a myTI.com account [here](#).

After creating an account, navigate to the [DRV2634 product page](#) and follow the link in the information box to request access to the software.

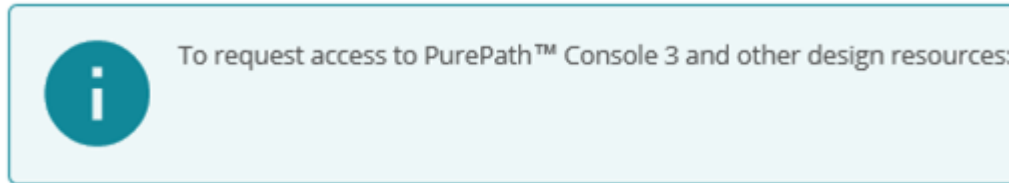


Figure 1. Requesting PPC3 Access

5 Device Configuration

The default configuration for the DRV2634 is described below in [Table 2](#) and [Figure 2](#).

5.1 Default Jumper Settings

Table 2. Default Jumper Settings

Jumper	Setting	Description
J11	L	Ch 2 ADDR 1
J10	H	Ch 2 ADDR 0
J4	Insert	Ch 2 VDD
J14	Removed	Ch 2 Out
J3	Insert	Ch 2 VBAT
J9 – 1&2	Insert	Ch 2 GPIO
J9 – 3&4	Insert	Ch 1 GPIO
J6	Insert	Ch 1 VBAT
J16	Insert	EEPROM WP
J15	Insert	Ch 1 Out
J7	Insert	Ch 1 VDD
J12	L	Ch 1 ADDR0
J13	L	Ch 1 ADDR1

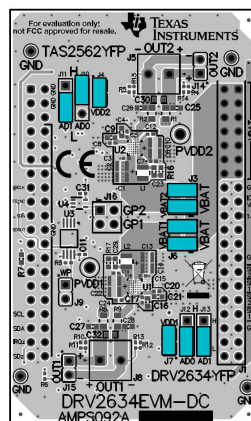


Figure 2. Default Jumper Settings

5.2 Address Select Jumpers

Table 3. Address Select Jumpers

Address	Pin A0	Pin A1
0x98	L	L
0x9A	H	L
0x9C	L	H
0x9E	H	H

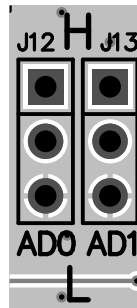


Figure 3. Address Select

DRV2634 supports 4 user configurable I²C addresses shown in Section 5.2. Use J12 & J13 to configure Channel 1 and J10 & J11 to configure Channel 2 as shown in Figure 3.

5.3 Mono Setup

Use the following instructions to complete a mono setup:

1. Install PPC3 with the DRV2634 plug-in.
2. Connect a speaker to J8 on the DRV2634EVM-DC.
3. Remove the jumpers at J3 and J4 as shown in Figure 4.

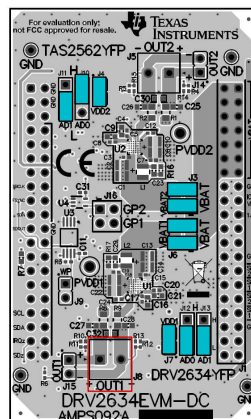


Figure 4. Mono Setup

4. Set the jumpers at J12 and J13 to the desired I²C address as shown in Section 5.2.
5. Configure PPC3-EVM-MB as described in SLEU120.
 - USB control for I²C
 - USB control for I2S
 - 3.3 V I²C
 - 3.3 V I2S

- 1.8 V IOVDD
6. Connect a 5V supply to connector J12 or J11 on PPC3-EVM-MB
 7. Connect a Micro USB Cable from PC to PPC3-EVM-MB
 8. Verify that TI USB Audio UAC2.0 is the default playback device by opening the sound dialog from the Windows Control Panel

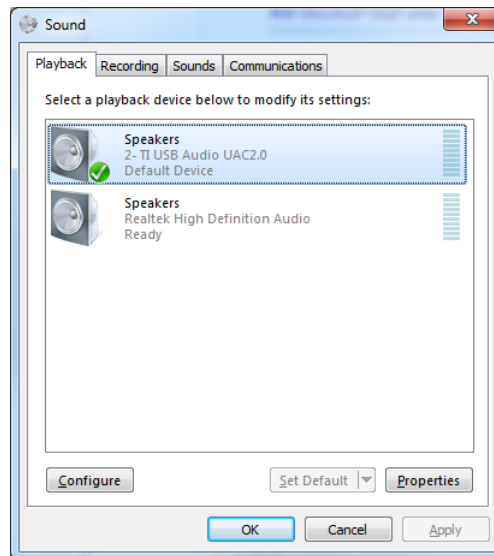


Figure 5. Windows Playback Devices

9. Set the maximum bit depth using the Texas Instruments USB Audio Device Control Panel found in the system tray

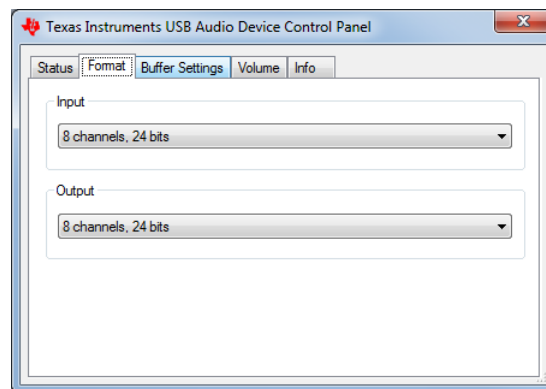


Figure 6. Texas Instruments USB Audio Device Control Panel

10. Set the sampling rate
 - Right click TI USB AUdio UAC2.0
 - Select Properties
 - Click advanced tab
 - Select Rate

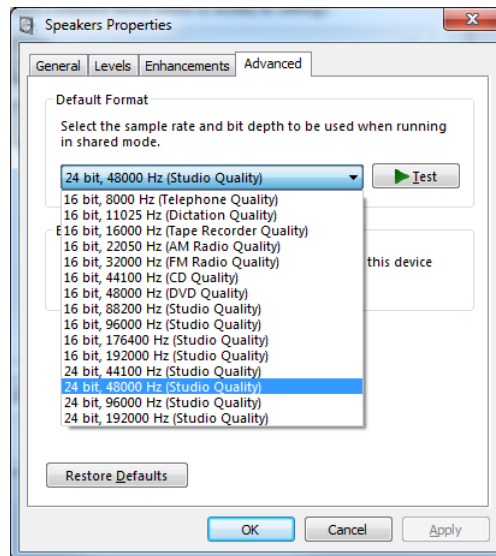


Figure 7. Windows Playback device Sample Rate

11. Configure the device using the DRV2634 PPC3 Plug-in

5.4 Stereo Setup

Use the following instructions to complete a stereo setup:

1. Install PPC3 with the DRV2634 plug-in
2. Connect a speaker to both J8 and J5 on the DRV2634EVM-DC
3. Set the jumpers at J12 & J13 and J11 & J10 to the unique I²C address as shown in [Section 5.2](#)

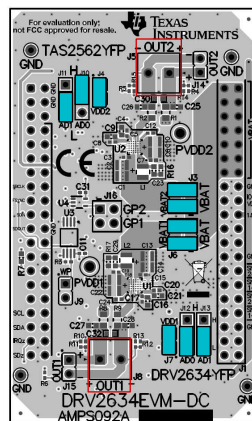


Figure 8. Stereo Setup

4. Configure PPC3-EVM-MB as described in
 - USB control for I²C
 - USB control for I2S
 - 3.3 V I²C
 - 3.3 V I2S
 - 1.8 V IOVDD
5. Connect a 5V supply to connector J12 or J11 on PPC3-EVM-MB
6. Connect a Micro USB Cable from PC to PPC3-EVM-MB
7. Verify that TI USB Audio UAC2.0 is the default playback device by opening the sound dialog from the

Windows Control Panel

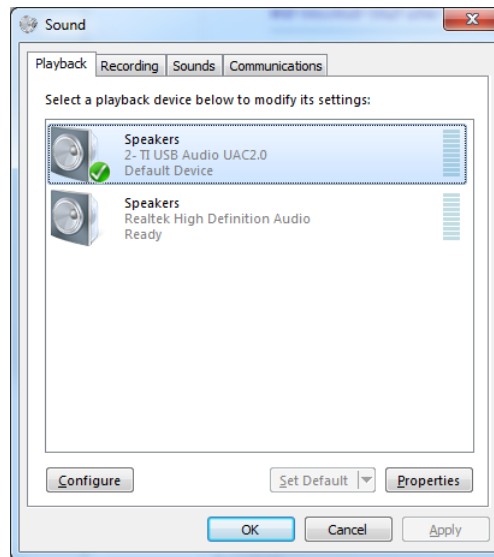


Figure 9. Windows Playback Devices

8. Set the maximum bit depth using the Texas Instruments USB Audio Device Control Panel found in the system tray

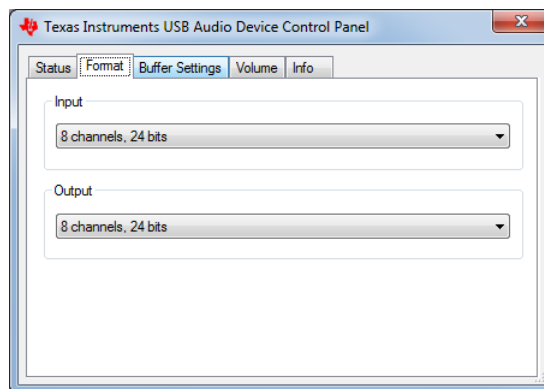


Figure 10. Texas Instruments USB Audio Device Control Panel

9. Set the sampling rate
 - Right click TI USB AUdio UAC2.0
 - Select Properties
 - Click advanced tab
 - Select Rate

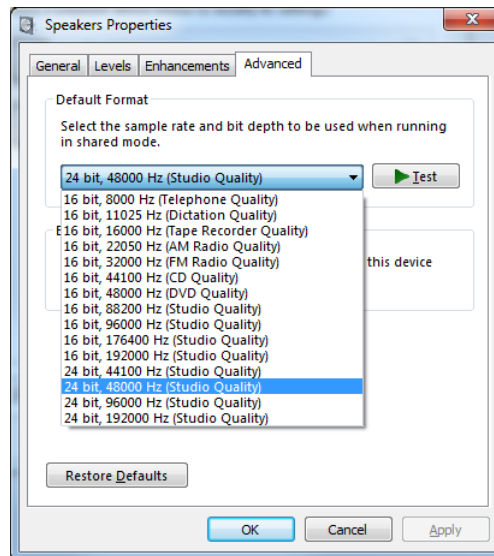


Figure 11. Windows Playback device Sample Rate

10. Configure the device using the DRV2634 PPC3 Plug-in

6 Digital Audio Interfaces

Select the various digital audio interfaces on the TAS2770EVM Reference Board through hardware settings and software settings. Several headers on PPC3-EVM-MB allow access to the following digital audio signals:

- I2S Data out (SDOUT) from the DRV2634 (for example, current and voltage sense data)
- I2S Data in (SDIN) to the DRV2634
- I2S Word clock or frame sync (FSYNC)
- I2S Bit clock (SBCLK)
- I²C Clock (SCLK)
- I²C Data (SDA) The selection between USB (internal) and external inputs is set using the control header on PPC3-EVM-MB.

Please refer to for detailed configuration settings.

7 EVM Schematics

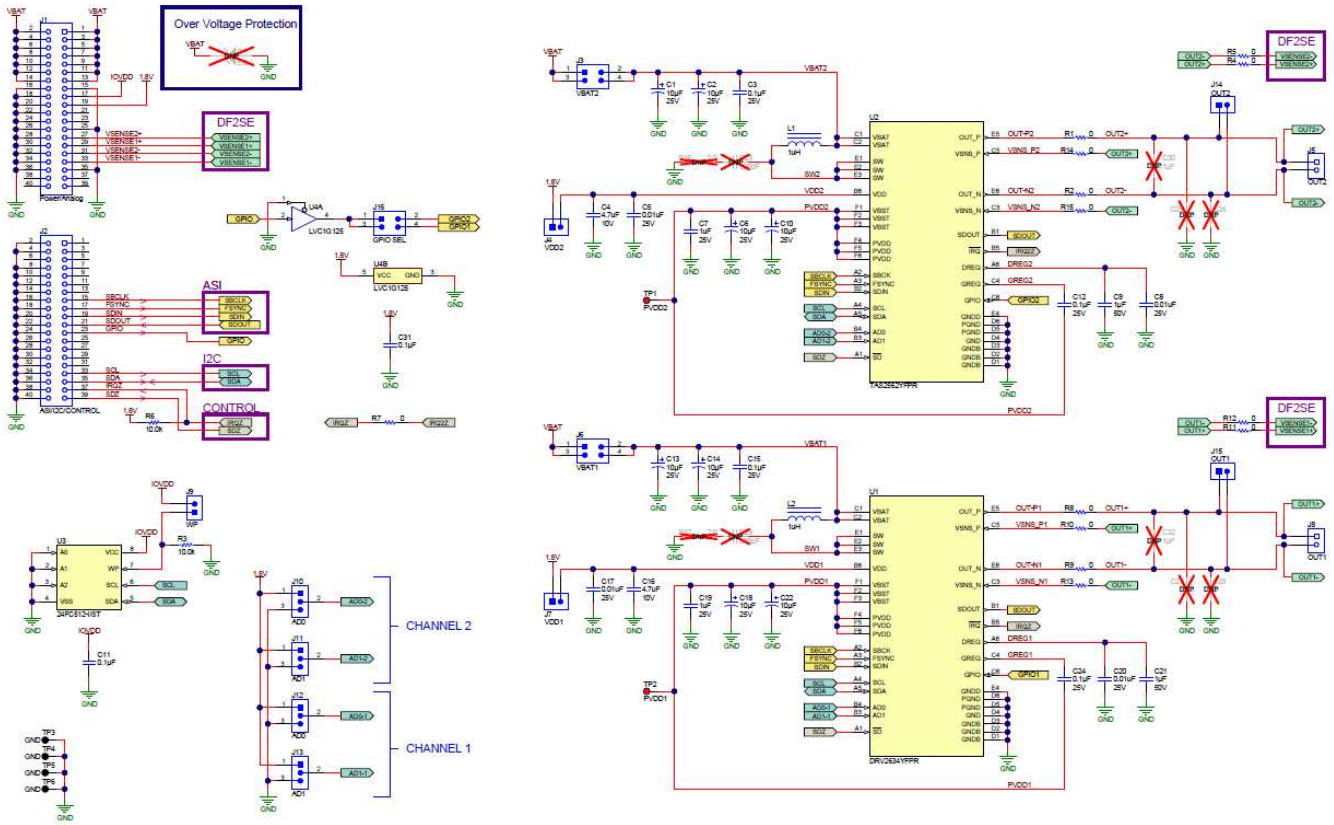


Figure 12. EVM Schematic

8 EVM Layer Plots

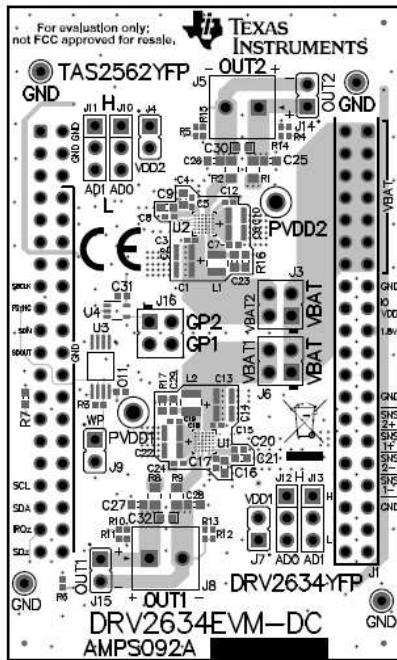


Figure 13. DRV2634EVM-DC Top Assembly

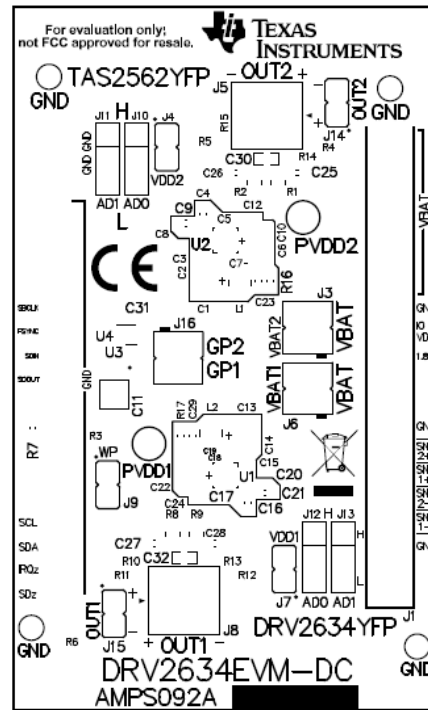


Figure 14. DRV2634EVM-DC Top Silk Screen

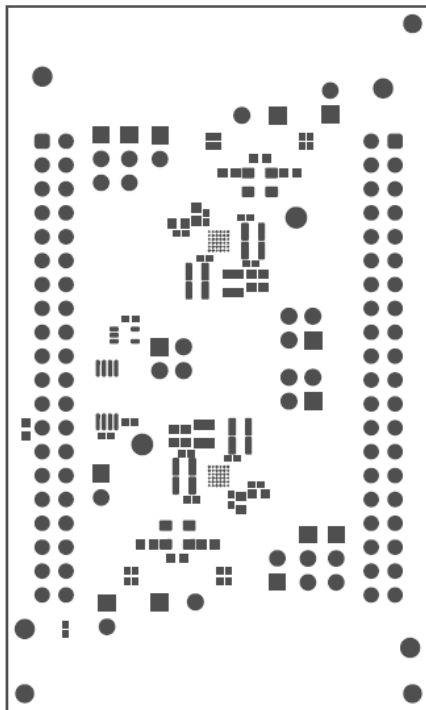


Figure 15. DRV2634EVM-DC Top Solder Mask

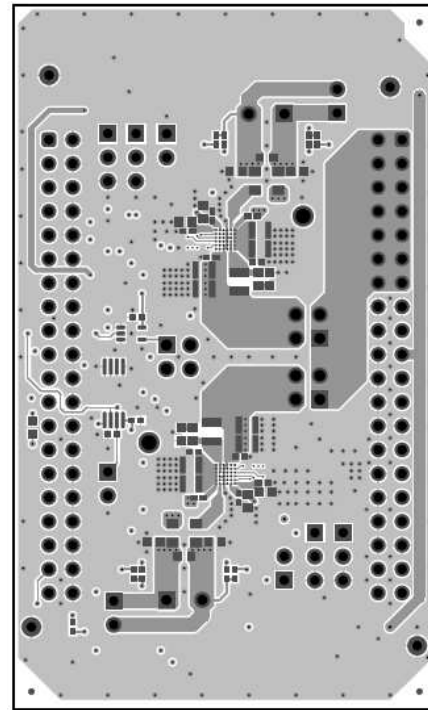


Figure 16. DRV2634EVM-DC Top Copper

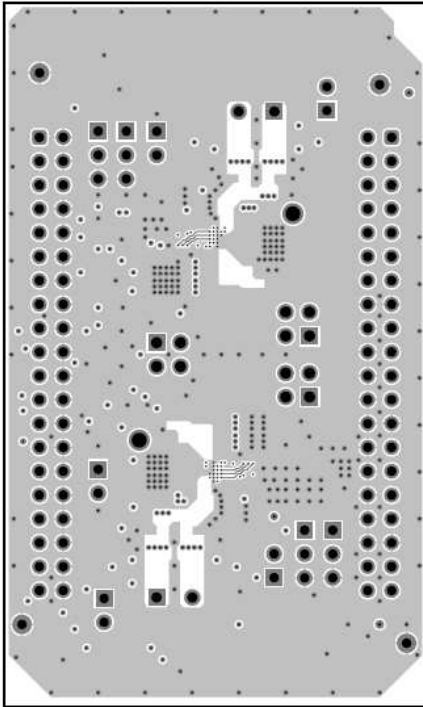


Figure 17. DRV2634EVM-DC Copper Layer 2

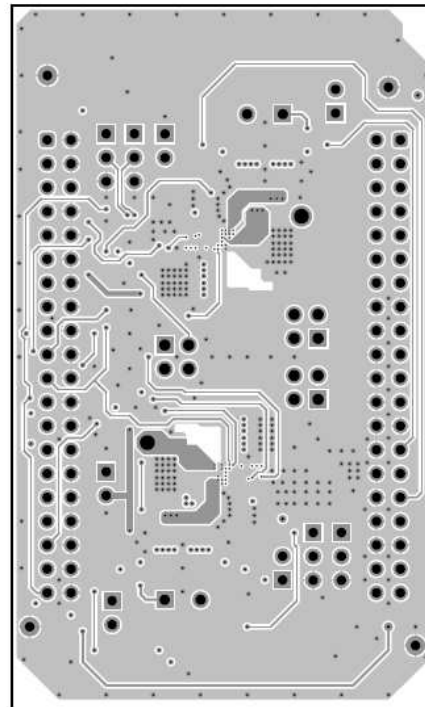


Figure 18. DRV2634EVM-DC Copper Layer 3

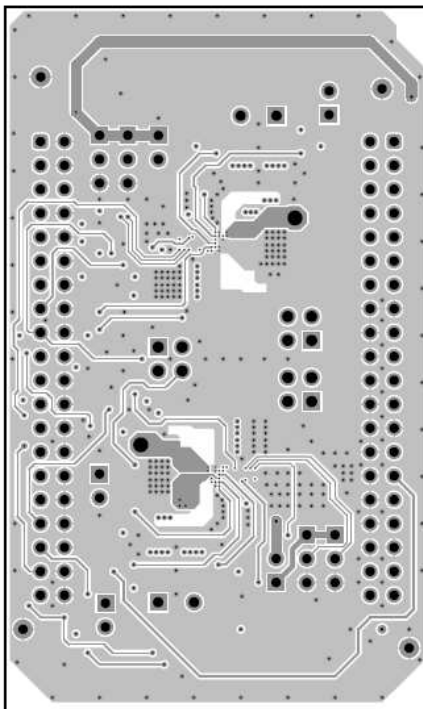


Figure 19. DRV2634EVM-DC Copper Layer 4

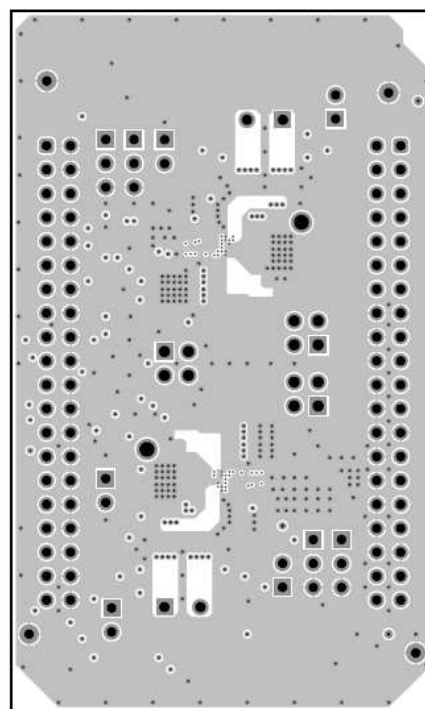


Figure 20. DRV2634EVM-DC Copper Layer 5

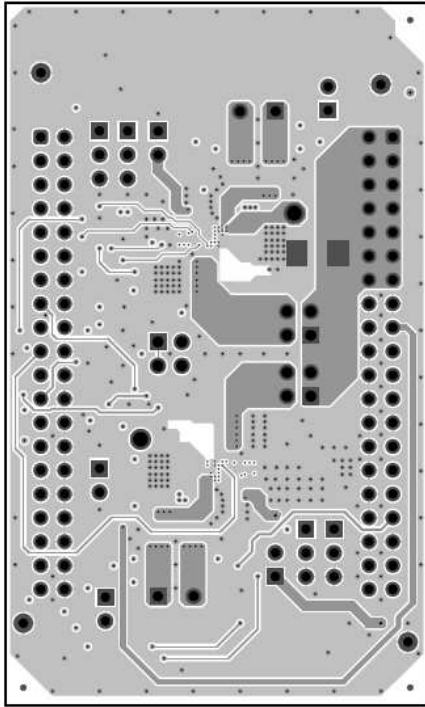


Figure 21. DRV2634EVM-DC Bottom Copper

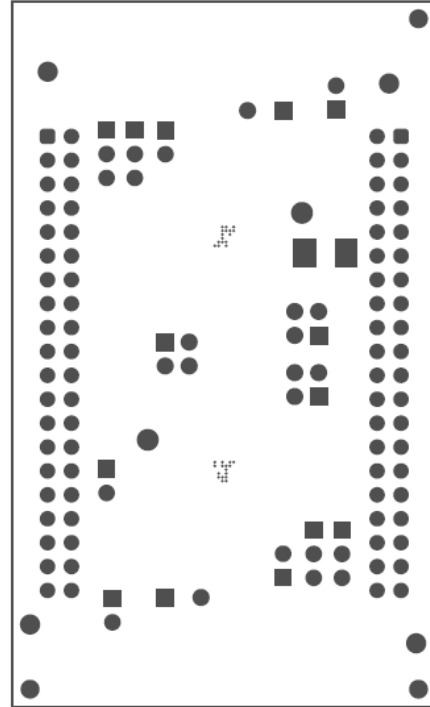
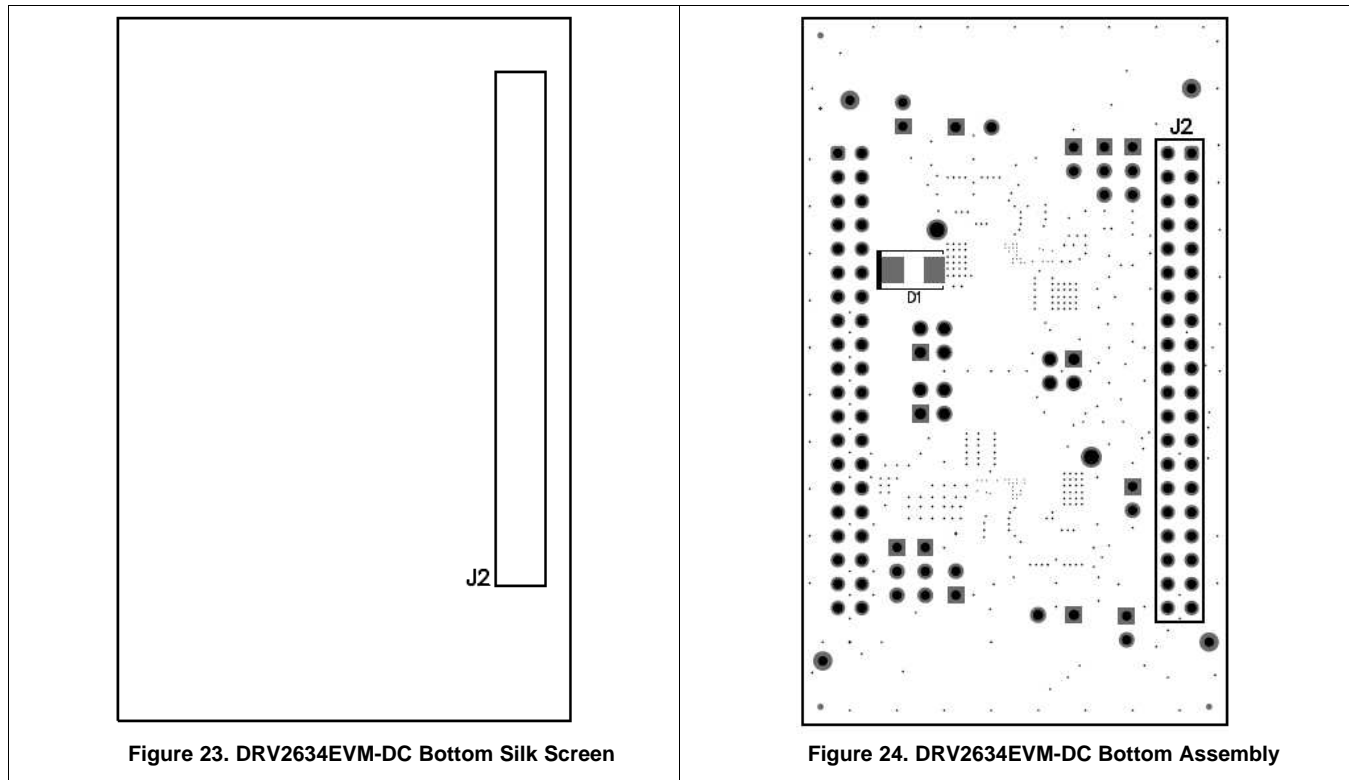


Figure 22. DRV2634EVM-DC Bottom Solder



9 Bill of Materials

Table 4. Bill of Materials

Designator	Value	Description	PackageReference	PartNumber	Manufacturer	Alternate PartNumber	Alternate Manufacturer
!PCB1		Printed Circuit Board		AMPS043	Any		
C1, C2, C6, C10, C13, C14, C18, C22	10uF	CAP, CERM, 10 uF, 35 V, +/- 10%, X7R, AEC-Q200 Grade 1, 1206_190	1206_190	CGA5L1X7R1 V106K160AC	TDK		
C4, C16	4.7uF	CAP, CERM, 4.7 uF, 10 V, +/- 10%, X5R, 0603	0603	CGB3B1X5R1 A475K055AC	TDK		
C9, C21	1uF	CAP, CERM, 1 uF, 16 V, +/- 20%, X7R, 0603	0603	CL10B105MO 8NNWC	Samsung		
C12, C24, C29, C30	0.1uF	CAP, CERM, 0.1 uF, 25 V, +/- 10%, X7R, AEC-Q200 Grade 1, 0402	0402	CGA2B3X7R1 E104K050BB	TDK		
J1, J2		Receptacle, 2.54 mm, 20x2, Gold, TH	Receptacle, 2.54 mm, 20x2, TH	SSQ-120-23-G-D	Samtec		

Table 4. Bill of Materials (continued)

Designator	Value	Description	PackageReference	PartNumber	Manufacturer	Alternate PartNumber	Alternate Manufacturer
J3, J4, J6, J7, J14, J15, J16		Header, 100 mil, 2x1, Gold, TH	Sullins 100 mil, 1x2, 230 mil above insulator	PBC02SAAN	Sullins Connector Solutions		
J5, J8		Conn Term Block, 2POS, 3.81 mm, TH	2POS Terminal Block	1727010	Phoenix Contact		
J9		Header, 2.54 mm, 2x2, Gold, TH	Header, 2.54 mm, 2x2, TH	PBC02DAAN	Sullins Connector Solutions		
J10, J11, J12, J13		Header, 100 mil, 3x1, Gold, TH	PBC03SAAN	PBC03SAAN	Sullins Connector Solutions		
L1, L2	1uH	Inductor, Shielded, Metal Composite, 1 uH, 3.3 A, 0.04 ohm, SMD	2.5x1.2x2 mm	DFE252012F-1R0M=P2	MuRata Toko		
R1, R2, R8, R9	0	RES, 0, 5%, 0.125 W, 0805	0805	RC0805JR-070RL	Yageo America		
R3, R6	10.0k	RES, 10.0 k, 1%, 0.063 W, AEC-Q200 Grade 0, 0402	0402	RMCF0402FT10K0	Stackpole Electronics Inc		
R4, R5, R11, R12	0	RES, 0, 5%, 0.063 W, 0402	0402	ERJ-2GE0R00X	Panasonic		
R7	0	RES, 0, 5%, 0.1 W, 0603	0603	ERJ-3GEY0R00V	Panasonic		
SH-J1, SH-J2, SH-J3, SH-J4, SH-J5, SH-J6, SH-J7, SH-J8, SH-J9, SH-J10, SH-J11	1x2	Shunt, 100 mil, Gold plated, Black	Shunt	SNT-100-BK-G	Samtec	969102-0000-DA	3M
TP1, TP11		Test Point, Compact, Red, TH	Red Compact Testpoint	5005	Keystone		
TP2, TP12, TP13, TP14		Test Point, Miniature, Black, TH	Black Miniature Testpoint	5001	Keystone		
TP3, TP4, TP5, TP6, TP7, TP8, TP9, TP10		Test Point, Miniature, Orange, TH	Orange Miniature Testpoint	5003	Keystone		
U1, U2		6W Boosted Class-D Audio Amplifier with IV-sense, YFP0036-C02 (DSBGA-36)	YFP0036-C02	DRV2634YFP R	Texas Instruments	DRV2634YFP T	Texas Instruments
U3		EEPROM, 512KBIT, 400KHZ, 8TSSOP	TSSOP-8	24FC512-I/ST	Microchip		

Table 4. Bill of Materials (continued)

Designator	Value	Description	PackageReference	PartNumber	Manufacturer	Alternate PartNumber	Alternate Manufacturer
U4		Single Bus Buffer Gate With 3-State Outputs, DCK0005A, LARGE T&R	DCK0005A	SN74LVC1G125DCKR	Texas Instruments		
C3, C15	0.1uF	CAP, CERM, 0.1 μ F, 25 V, +/- 10%, X7R, AEC-Q200 Grade 1, 0402	0402	CGA2B3X7R1E104K050BB	TDK		
C5, C7, C8, C11, C17, C19, C20, C23	0.01uF	CAP, CERM, 0.01 μ F, 25 V, +/- 10%, X7R, 0402	0402	GCM155R71E103KA37D	MuRata		
C25, C26, C27, C28	1uF	CAP, CERM, 1 μ F, 16 V, +/- 20%, X7R, 0603	0603	CL10B105MO8NNWC	Samsung		
FID1, FID2, FID3, FID4, FID5, FID6		Fiducial mark. There is nothing to buy or mount.	N/A	N/A	N/A		
L3, L4	1uH	Inductor, 1 uH, 7 A, 0.014 ohm, SMD	4.15x4 mm	PCMB053T-1R0MS	Susumu Co Ltd		
R10, R13	0	RES, 0, 5%, 1 W, 2512	2512	RC6432J000CS	Samsung		

IMPORTANT NOTICE AND DISCLAIMER

TI PROVIDES TECHNICAL AND RELIABILITY DATA (INCLUDING DATASHEETS), DESIGN RESOURCES (INCLUDING REFERENCE DESIGNS), APPLICATION OR OTHER DESIGN ADVICE, WEB TOOLS, SAFETY INFORMATION, AND OTHER RESOURCES "AS IS" AND WITH ALL FAULTS, AND DISCLAIMS ALL WARRANTIES, EXPRESS AND IMPLIED, INCLUDING WITHOUT LIMITATION ANY IMPLIED WARRANTIES OF MERCHANTABILITY, FITNESS FOR A PARTICULAR PURPOSE OR NON-INFRINGEMENT OF THIRD PARTY INTELLECTUAL PROPERTY RIGHTS.

These resources are intended for skilled developers designing with TI products. You are solely responsible for (1) selecting the appropriate TI products for your application, (2) designing, validating and testing your application, and (3) ensuring your application meets applicable standards, and any other safety, security, or other requirements. These resources are subject to change without notice. TI grants you permission to use these resources only for development of an application that uses the TI products described in the resource. Other reproduction and display of these resources is prohibited. No license is granted to any other TI intellectual property right or to any third party intellectual property right. TI disclaims responsibility for, and you will fully indemnify TI and its representatives against, any claims, damages, costs, losses, and liabilities arising out of your use of these resources.

TI's products are provided subject to TI's Terms of Sale (www.ti.com/legal/termsofsale.html) or other applicable terms available either on ti.com or provided in conjunction with such TI products. TI's provision of these resources does not expand or otherwise alter TI's applicable warranties or warranty disclaimers for TI products.

Mailing Address: Texas Instruments, Post Office Box 655303, Dallas, Texas 75265
Copyright © 2020, Texas Instruments Incorporated