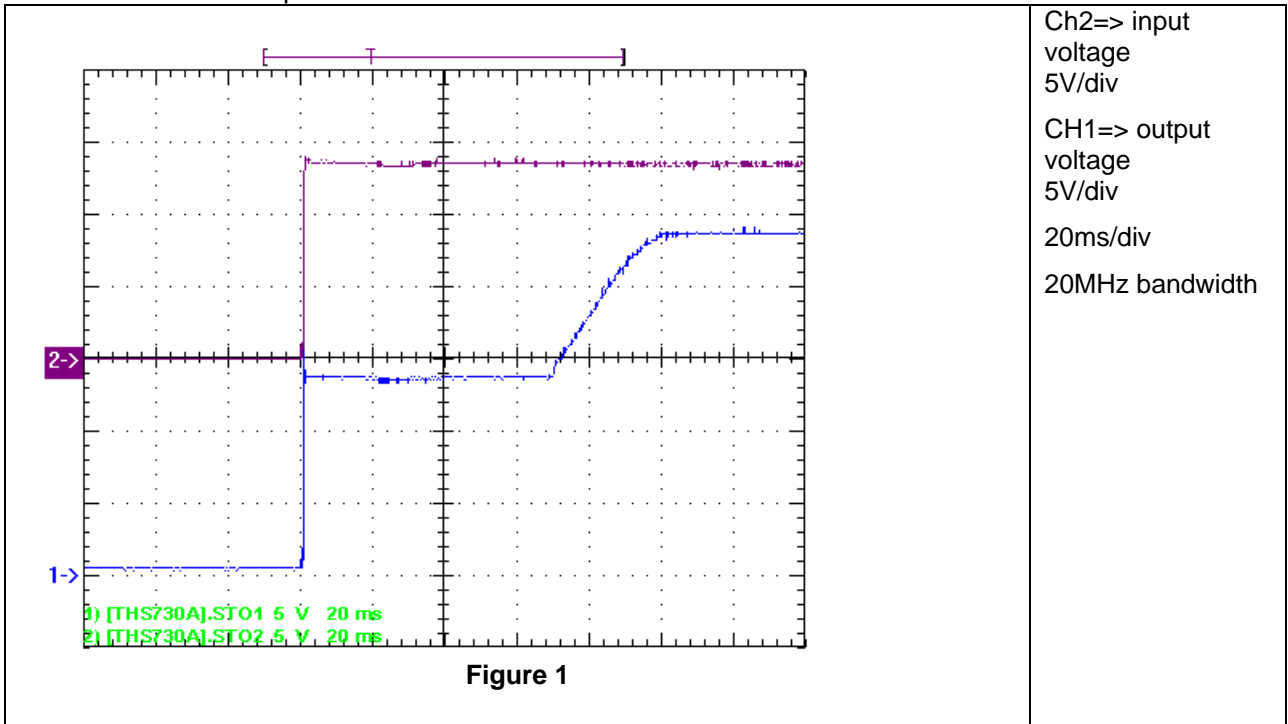


PMP4741_2_RevB Test Results

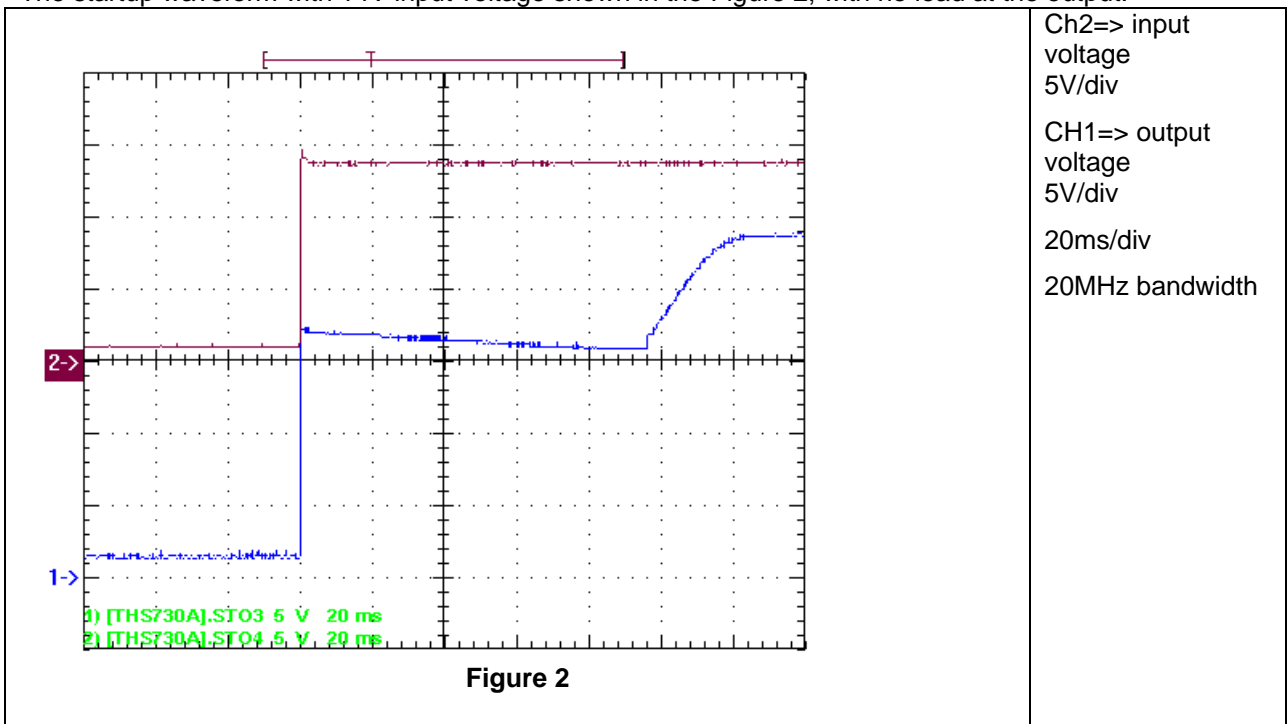
1	Startup.....	2
2	Shutdown	3
3	Efficiency.....	4
4	Load regulation	5
5	Control Loop Frequency Response	6
6	Switch Node Waveform	7
7	Ripple Voltages	8
8	Load Transients	9
9	Thermal Image.....	10

1 Startup

The startup waveform is shown in the Figure 1. The input voltage was set at 14V, with 4A load at the output.

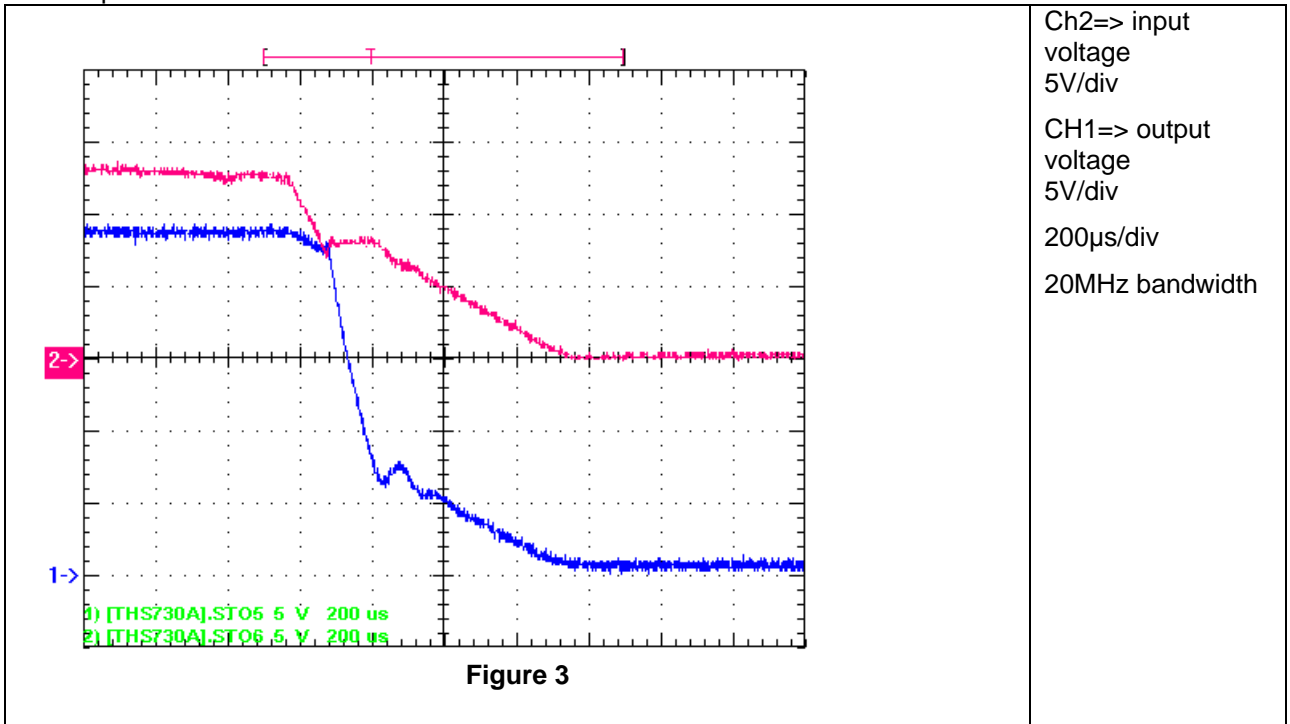


The startup waveform with 14V input voltage shown in the Figure 2; with no load at the output.



2 Shutdown

The shutdown waveform is shown in the Figure 3 at 14V input voltage. With 4A load applied at the output.



3 Efficiency

The efficiency is shown in the Figure 4 below. The input voltage was set to 14V. In this figure two different inductor types (L1) with the same inductivity (10 μ H) are compared. All other measurements in this report were done with the IHLP inductor.

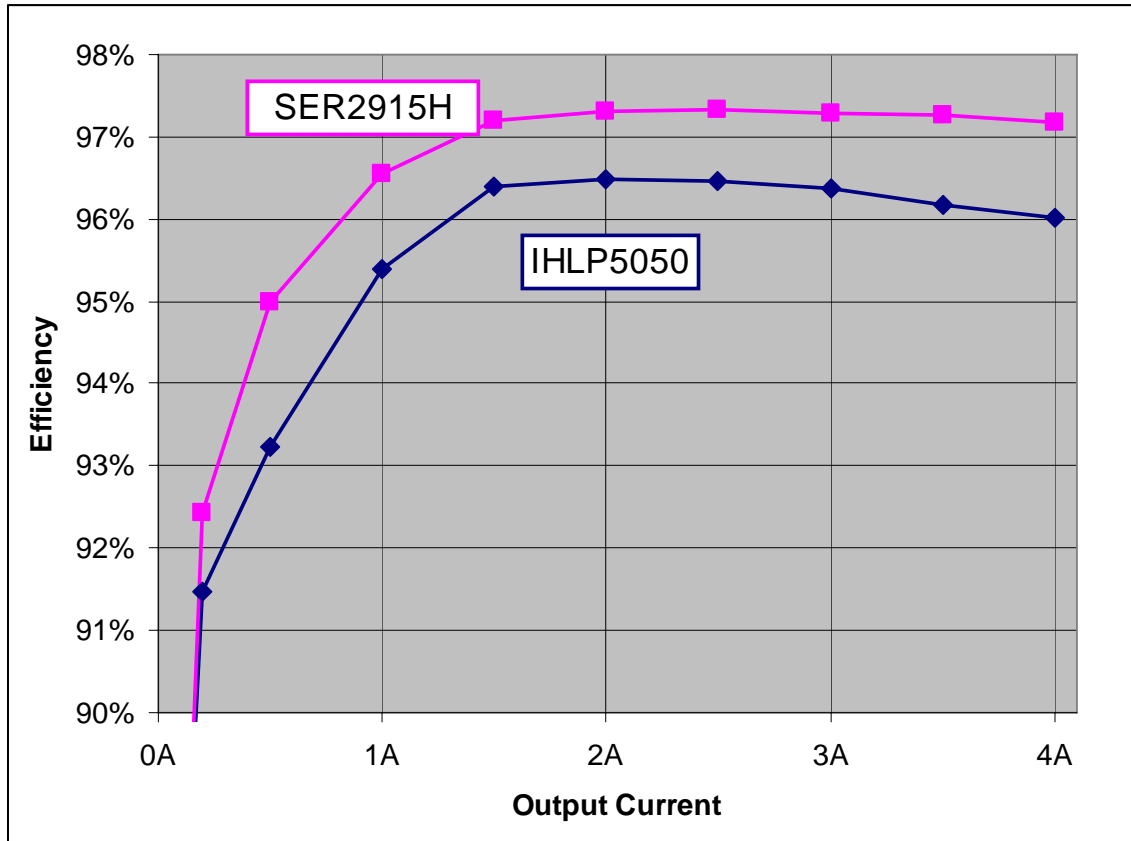


Figure 4

4 Load regulation

The load regulation for 14V input voltage is shown in Figure 5.

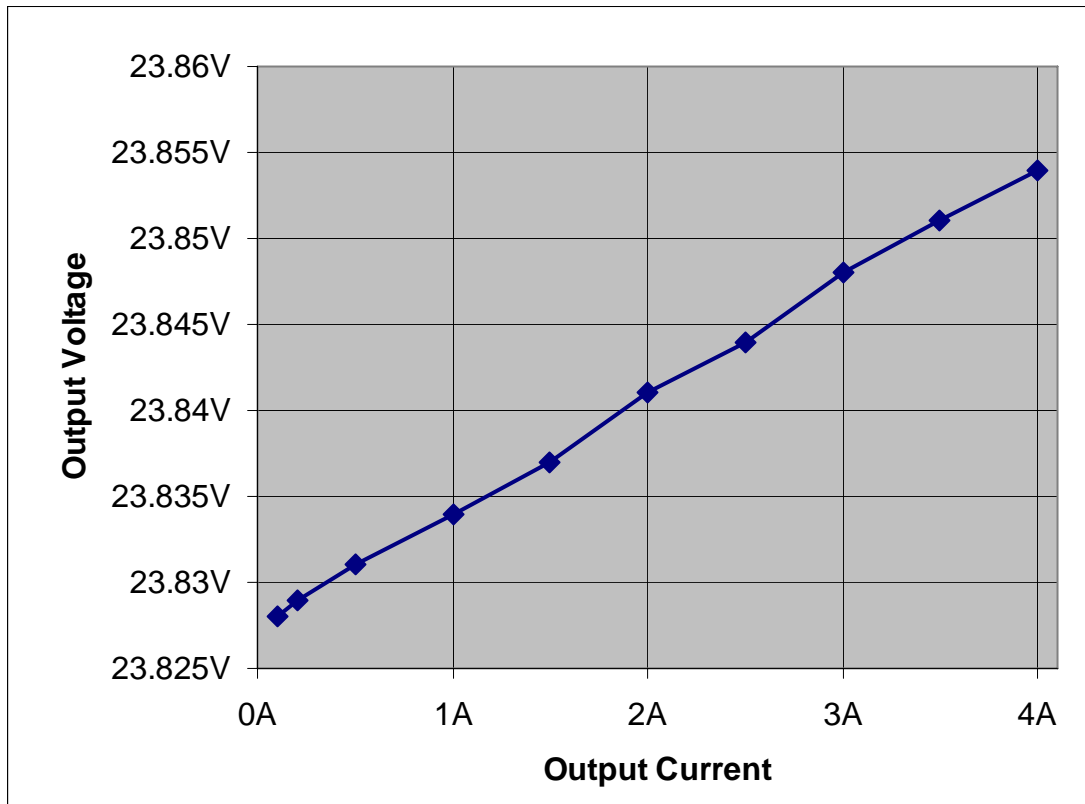


Figure 5

5 Control Loop Frequency Response

Figure 6 shows the loop response. 4-load applied. The input voltages was set to 14V.

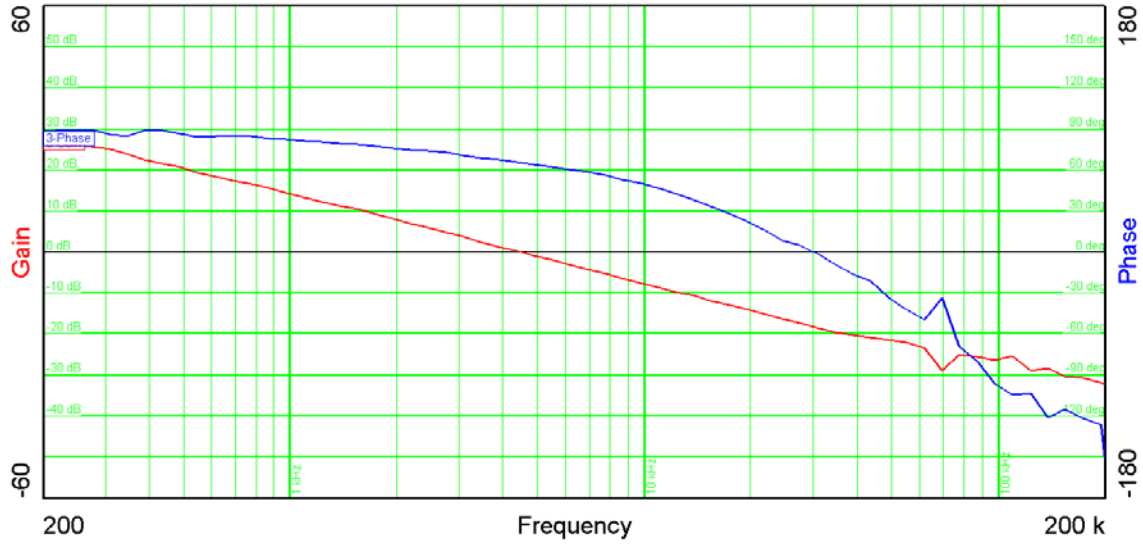


Figure 6

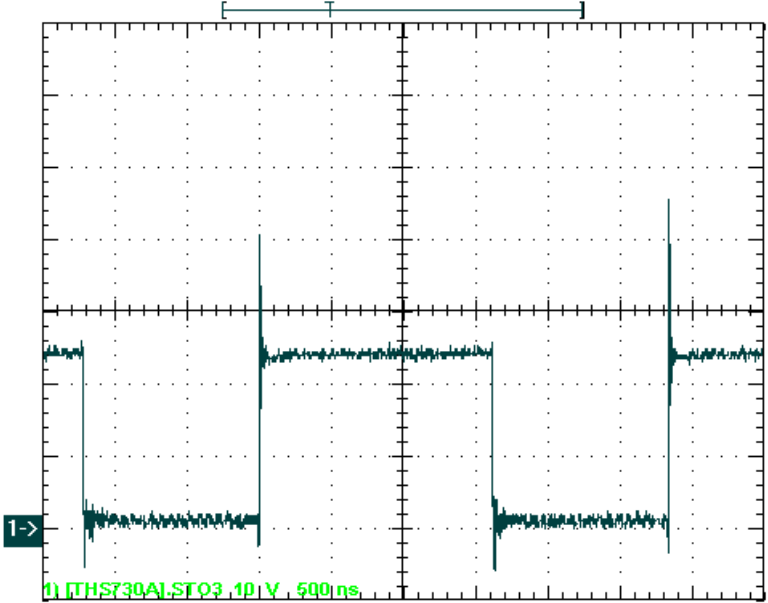
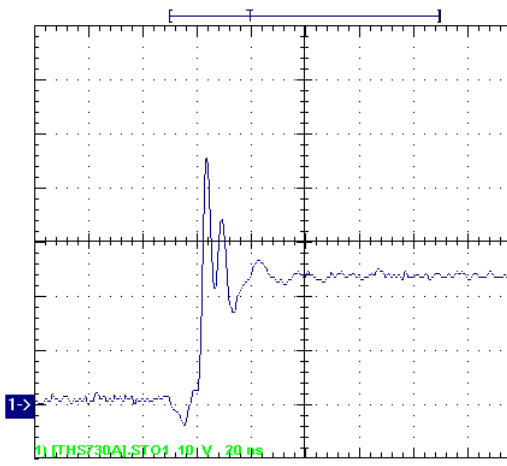
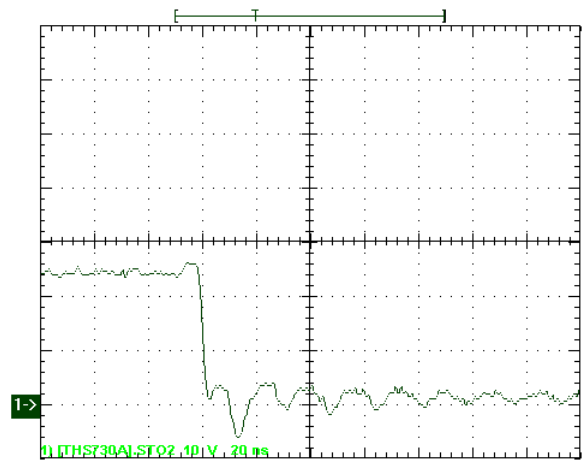
Table 1 summarizes the results from Figure 6

Bandwidth (kHz)	4.48
Phase margin	65.6°
slope (20dB/decade)	-1.37
gain margin (dB)	-18.25
slope (20dB/decade)	-1.14
freq (kHz)	30

Table 1

6 Switch Node Waveform

With 4A load results in the waveforms shown in Figure 7 and Figure 8. 14V were applied to the input.

 <p>1 [THS730A] ST03 10 V, 500 ns</p> <p>Figure 7</p>	<p>Ch3 => switchnode 10V/div 500ns/div full bandwidth</p>	
 <p>1 [THS730A] ST01 20 V, 20 ns</p>	 <p>1 [THS730A] ST02 20 V, 20 ns</p> <p>Figure 8</p>	<p>Ch1 => switchnode 20V/div 20ns/div full bandwidth</p>

7 Ripple Voltages

The output ripple voltage at 4A load is displayed in Figure 9. The input voltage was set to 14V.

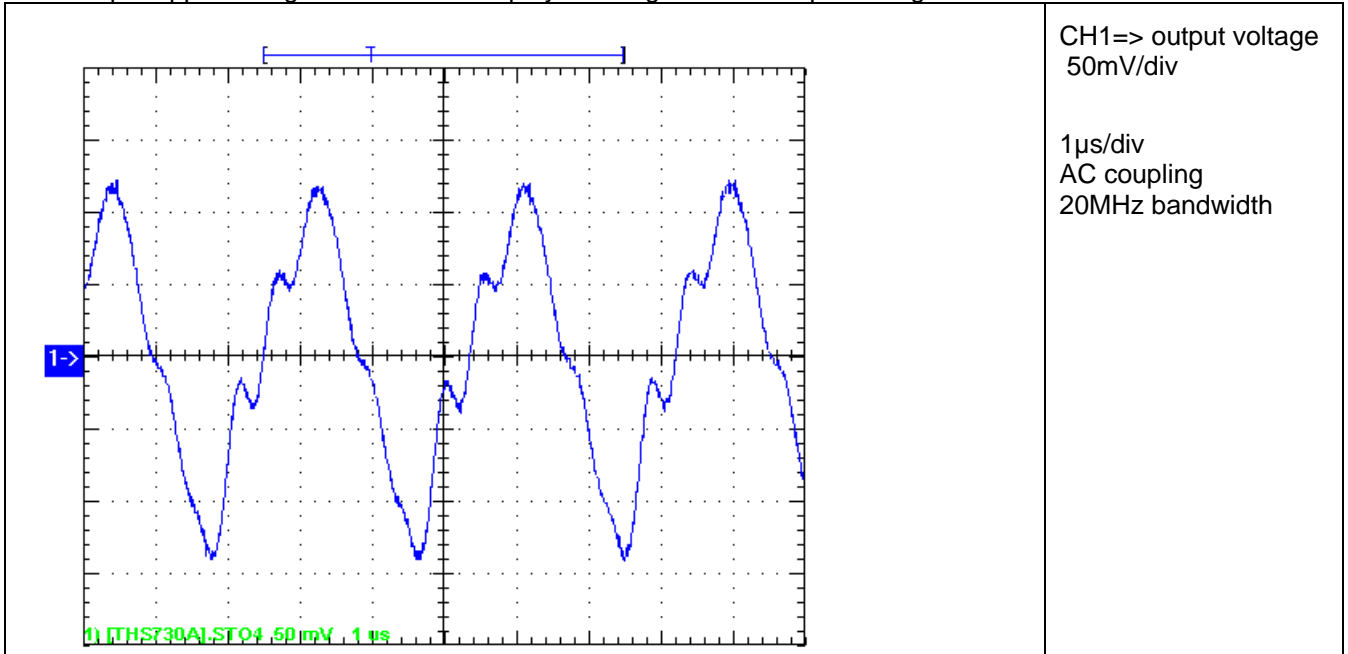


Figure 9

The input ripple voltage is displayed in Figure 10. The input voltage was set to 14V.

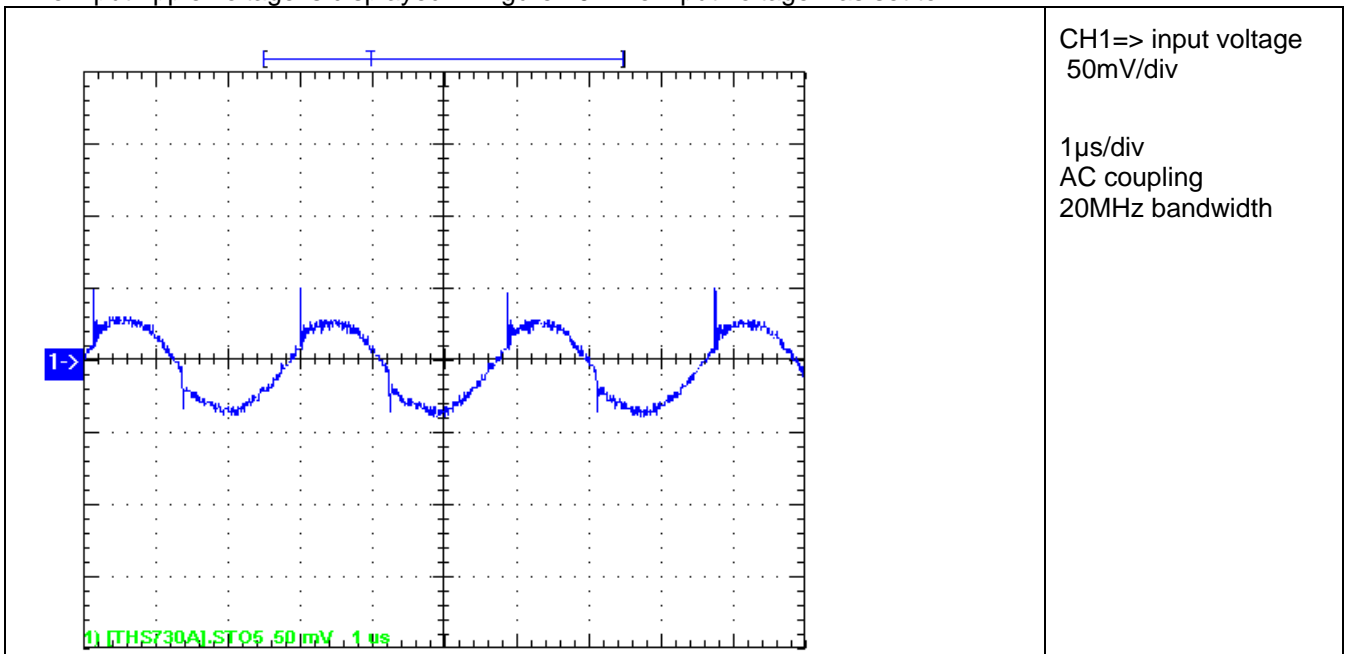
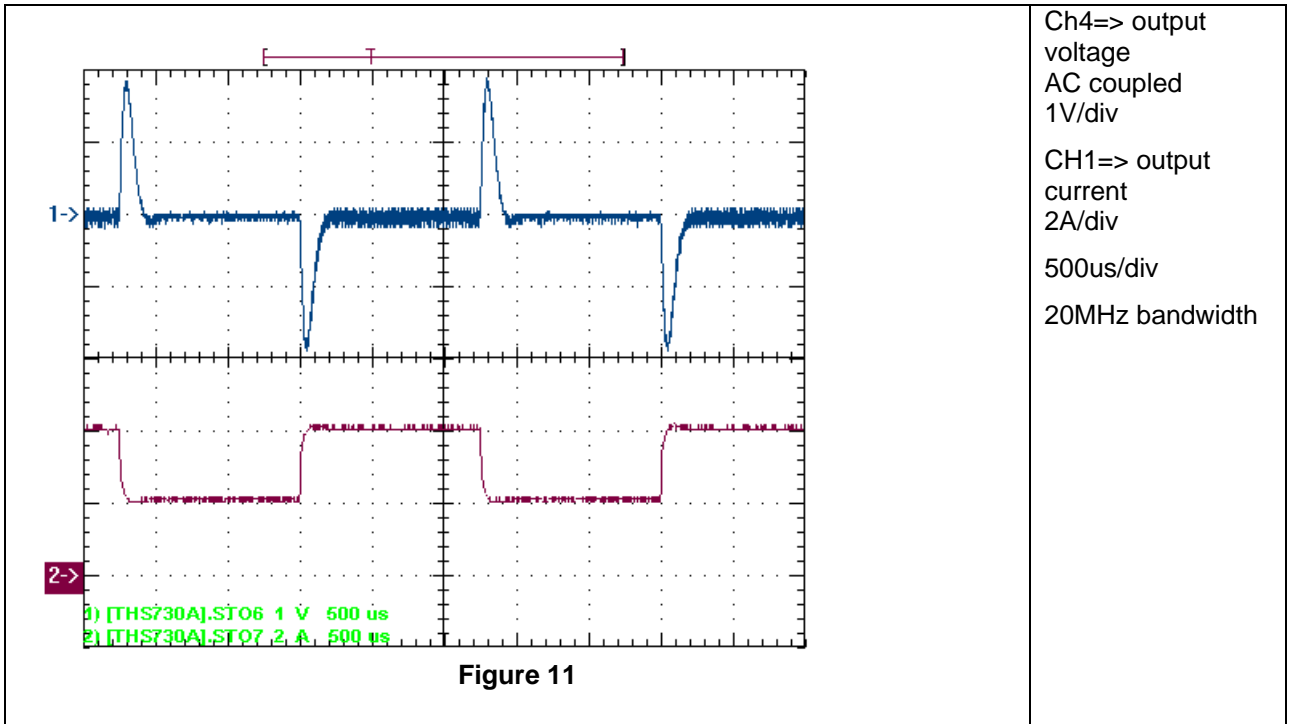


Figure 10

8 Load Transients

A output current change from 2A to 4A 400Hz results in following Figure 11. The input voltage was set to 14V



9 Thermal Image

The following two pictures show the thermal image at 4A output current. Figure 12 is the photo from the top side and Figure 13 from the bottom side.

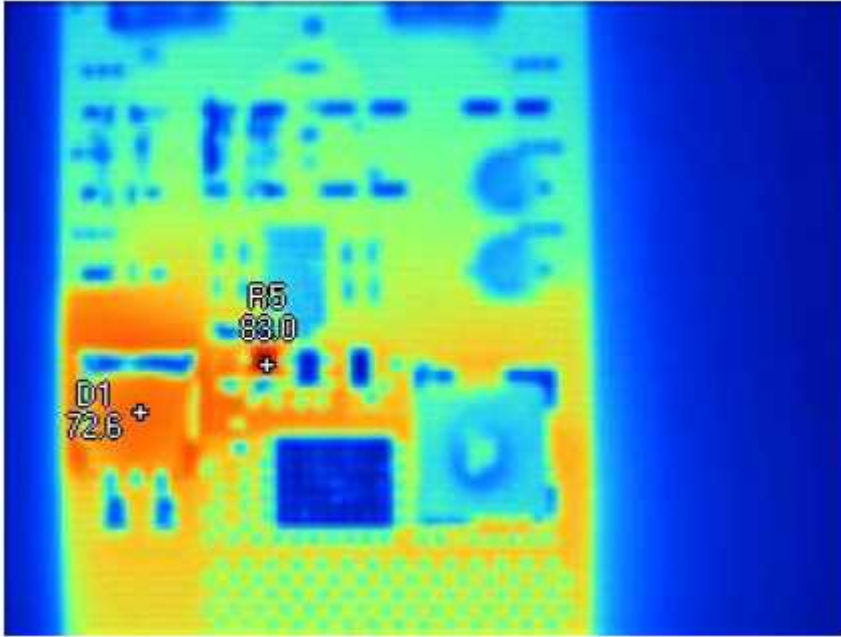


Figure 12

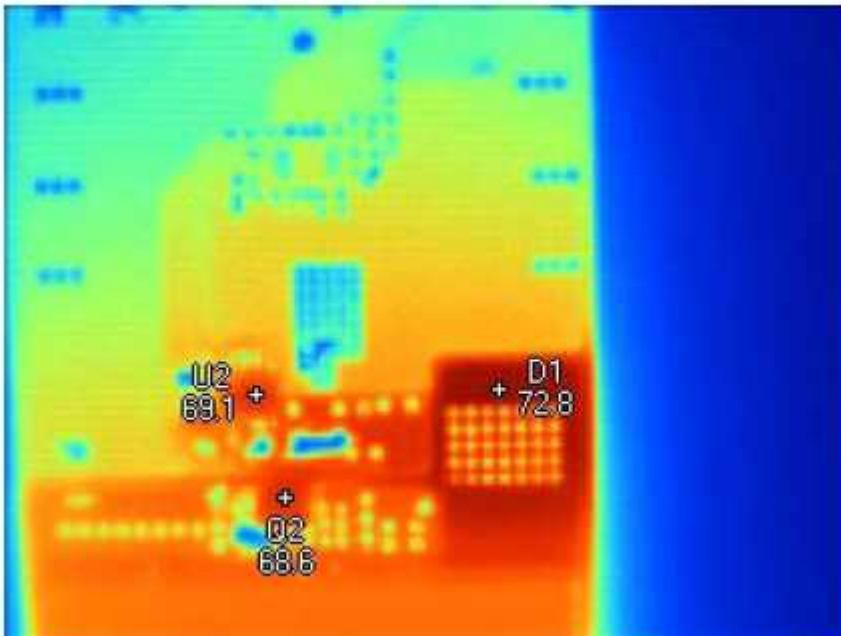


Figure 13

For Feasibility Evaluation Only, in Laboratory/Development Environments. The reference design is not a complete product. It is intended solely for use for preliminary feasibility evaluation in laboratory / development environments by technically qualified electronics experts who are familiar with the dangers and application risks associated with handling electrical / mechanical components, systems and subsystems. It should not be used as all or part of a production unit.

Your Sole Responsibility and Risk. You acknowledge, represent and agree that:

1. You have unique knowledge concerning Federal, State and local regulatory requirements (including but not limited to Food and Drug Administration regulations, if applicable) which relate to your products and which relate to your use (and/or that of your employees, affiliates, contractors or designees) of the reference design for evaluation, testing and other purposes.
2. You have full and exclusive responsibility to assure the safety and compliance of your products with all such laws and other applicable regulatory requirements, and also to assure the safety of any activities to be conducted by you and/or your employees, affiliates, contractors or designees, using the reference design. Further, you are responsible to assure that any interfaces (electronic and/or mechanical) between the reference design and any human body are designed with suitable isolation and means to safely limit accessible leakage currents to minimize the risk of electrical shock hazard.
3. Since the REFERENCE DESIGN is not a completed product, it may not meet all applicable regulatory and safety compliance standards (such as UL, CSA, VDE, CE, RoHS and WEEE) which may normally be associated with similar items. You assume full responsibility to determine and/or assure compliance with any such standards and related certifications as may be applicable. You will employ reasonable safeguards to ensure that your use of the reference design will not result in any property damage, injury or death, even if the REFERENCE DESIGN should fail to perform as described or expected.

Certain Instructions. Exceeding the specified reference design ratings (including but not limited to input and output voltage, current, power, and environmental ranges) may cause property damage, personal injury or death. If there are questions concerning these ratings please contact a TI field representative prior to connecting interface electronics including input power and intended loads. Any loads applied outside of the specified output range may result in unintended and/or inaccurate operation and/or possible permanent damage to the reference design and/or interface electronics. Please consult the reference design User's Guide prior to connecting any load to the reference design output. If there is uncertainty as to the load specification, please contact a TI field representative. During normal operation, some circuit components may have case temperatures greater than 60°C as long as the input and output ranges are maintained at nominal ambient operating temperature. These components include but are not limited to linear regulators, switching transistors, pass transistors, and current sense resistors which can be identified using the reference design schematic. When placing measurement probes near these devices during normal operation, please be aware that these devices may be very warm to the touch.

Agreement to Defend, Indemnify and Hold Harmless. You agree to defend, indemnify and hold TI, its licensors and their representatives harmless from and against any and all claims, damages, losses, expenses, costs and liabilities (collectively, "Claims") arising out of or in connection with any use of the reference design that is not in accordance with the terms of this agreement. This obligation shall apply whether Claims arise under the law of tort or contract or any other legal theory, and even if the reference design fails to perform as described or expected.

Safety-Critical or Life-Critical Applications. If you intend to evaluate TI components for possible use in safety-critical applications (such as life support) where a failure of the TI product would reasonably be expected to cause severe personal injury or death, such as devices which are classified as FDA Class III or similar classification, then you must specifically notify TI of such intent and enter into a separate Assurance and Indemnity Agreement.

IMPORTANT NOTICE AND DISCLAIMER

TI PROVIDES TECHNICAL AND RELIABILITY DATA (INCLUDING DATASHEETS), DESIGN RESOURCES (INCLUDING REFERENCE DESIGNS), APPLICATION OR OTHER DESIGN ADVICE, WEB TOOLS, SAFETY INFORMATION, AND OTHER RESOURCES "AS IS" AND WITH ALL FAULTS, AND DISCLAIMS ALL WARRANTIES, EXPRESS AND IMPLIED, INCLUDING WITHOUT LIMITATION ANY IMPLIED WARRANTIES OF MERCHANTABILITY, FITNESS FOR A PARTICULAR PURPOSE OR NON-INFRINGEMENT OF THIRD PARTY INTELLECTUAL PROPERTY RIGHTS.

These resources are intended for skilled developers designing with TI products. You are solely responsible for (1) selecting the appropriate TI products for your application, (2) designing, validating and testing your application, and (3) ensuring your application meets applicable standards, and any other safety, security, or other requirements. These resources are subject to change without notice. TI grants you permission to use these resources only for development of an application that uses the TI products described in the resource. Other reproduction and display of these resources is prohibited. No license is granted to any other TI intellectual property right or to any third party intellectual property right. TI disclaims responsibility for, and you will fully indemnify TI and its representatives against, any claims, damages, costs, losses, and liabilities arising out of your use of these resources.

TI's products are provided subject to TI's Terms of Sale (<https://www.ti.com/legal/termsofsale.html>) or other applicable terms available either on [ti.com](https://www.ti.com) or provided in conjunction with such TI products. TI's provision of these resources does not expand or otherwise alter TI's applicable warranties or warranty disclaimers for TI products.

Mailing Address: Texas Instruments, Post Office Box 655303, Dallas, Texas 75265
Copyright © 2021, Texas Instruments Incorporated