

TPS6108xEVM-147

This user's guide describes the characteristics, operation, and use of the TPS61081EVM-147 evaluation module (EVM). This EVM contains the Texas Instruments high-efficiency boost converter that is configured to provide a regulated 12-V output voltage from a Li-ion battery, 3.3-V or 5-V input power supply. The user's guide includes a schematic diagram, bill of materials (BOM), and test data.

Contents

1	Introduction	1
2	Setup and Test Results	2
3	Board Layout	5
4	Bill of Materials and Schematic	7

List of Figures

1	TPS61080 Efficiency With $V_{IN} = 3.6\text{ V}$ and CDRH4D16NP-4R7 Inductor	3
2	TPS61081 Efficiency With $V_{IN} = 3.6\text{ V}$ and VLFCF5020T-4R7N1R7-1 Inductor	4
3	TPS61080 Start-Up With $V_{IN} = 3.6\text{ V}$ and $I_{OUT} = 50\text{ mA}$	4
4	Load Transient Response From 100 mA to 200 mA With $C4 = 10\text{ }\mu\text{F}$ and $C3 = 82\text{ pF}$..	5
5	Top Assembly Layer	5
6	Top Layer Routing.....	6
7	Bottom Layer Routing	6
8	TPS6108xEVM-147 Schematic.....	8

List of Tables

1	Performance Specification Summary	2
2	Bill of Materials.....	7

1 Introduction

This section contains background information for the TPS61080EVM-147 and TPS61081EVM-147 evaluation modules.

1.1 Background

This TPS6108xEVM-147 uses either a TPS61080 or TPS61081 boost converter to step up 2.5-V to 6-V input voltages to 12 V. The goal of the EVM is to facilitate evaluation of the TPS61081 power supply solution. The EVM uses the TPS61080 or TPS61081 adjustable output boost converter and the appropriate feedback components to provide 12 V.

1.2 Performance Specification Summary

[Table 1](#) provides a summary of the TPS6108xEVM performance specifications. All specifications are given for an ambient temperature of 25°C.

Table 1. Performance Specification Summary

SPECIFICATION	TEST CONDITIONS	MIN	TYP	MAX	UNIT
V_{IN}		2.5		6	V
V_{OUT} ⁽¹⁾	TPS61080EVM, $V_{IN} = 3.6\text{ V} \pm 5\%$, $I_{OUT} < 55\text{ mA}$, $f_{SW} = 1.2\text{ MHz}$	11.66	12	12.58	V
	TPS61081EVM, $V_{IN} = 3.6\text{ V} \pm 5\%$, $I_{OUT} < 250\text{ mA}$, $f_{SW} = 1.2\text{ MHz}$	11.66	12	12.58	V

(1) Min and Max values include 1% resistor tolerance as well as IC reference tolerance.

1.3 Modifications

Because the primary goal of the EVM is to demonstrate the small size of the TPS6108x power supply solution, capacitors and inductors with small footprints were chosen. These capacitors and inductors were carefully selected to maximize efficiency and minimize ripple while minimizing overall solution size. Changing components could improve or degrade EVM performance.

This EVM can be used to power an external WLED string. The user should connect the string between jumpers J3 and J5, populate resistor R7 with a 0- Ω resistor, remove resistor R1 and capacitor C2, and properly size resistors R2 and R5 as explained in the data sheet. In addition, components R6, R8, and C6 can be used to implement analog dimming as explained in the data sheet.

2 Setup and Test Results

This section describes how to properly connect, set up, and use the TPS6108xEVM.

2.1 Input/Output Connections

The connection points are described in the following paragraphs.

2.1.1 J1-VIN

This header is the positive connection to the input power supply. The leads to the input supply should be twisted and kept as short as possible.

2.1.2 J2-GND

This header is the return connection to the input power supply.

2.1.3 J3-VOUT

This header is the positive output for the device.

2.1.4 J4-GND

This header is the return connection for the load.

2.1.5 J5-FB

This header connects to pin 5, FB, on the IC through resistors R4 and R7. Resistor R7 should only be populated with a 0- Ω resistor when connecting white light LEDs.

2.1.6 J6-DIM

If components R6, R8, and C6 are properly sized, an external dc voltage source or function generator can be connected to this header and ground to provide analog dimming.

2.1.7 JP1-ENable

Installing this jumper ties the EN pin to V_{IN} , thereby enabling the device. Removing the jumper allows the internal pulldown resistor to pull EN to ground, thereby disabling the device.

2.1.8 JP2-FSW

The middle pin of this jumper connects to the FSW pin of the IC. Placing this jumper across pins 1 and 2 ties the FSW pin to V_{IN} , thereby implementing a 1.2-MHz switching frequency. Placing this jumper across pins 2 and 3 ties the FSW pin to ground, thereby implementing a 600-kHz switching frequency.

2.2 EVM Operation

The user must connect an input power supply set between 2.5 V and 6 V between headers J1 and J2 in order for the EVM to operate. The absolute maximum input voltage is 7 V. The user can connect a load resistance between headers J3 and J4. Alternatively, the user can connect a WLED string between jumpers J3 and J5, populate resistor R7 with a 0- Ω resistor, remove resistor R1 and capacitor C2, and properly size resistors R2 and R5 as explained in the datasheet. Short jumper JP1 to enable the device.

2.3 Test Results

Figure 1 shows the test results using this EVM.

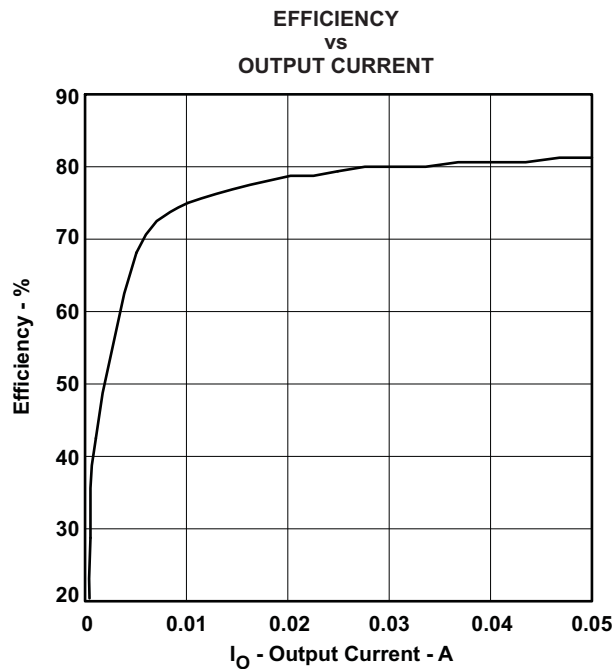


Figure 1. TPS61080 Efficiency With $V_{IN} = 3.6$ V and CDRH4D16NP-4R7 Inductor

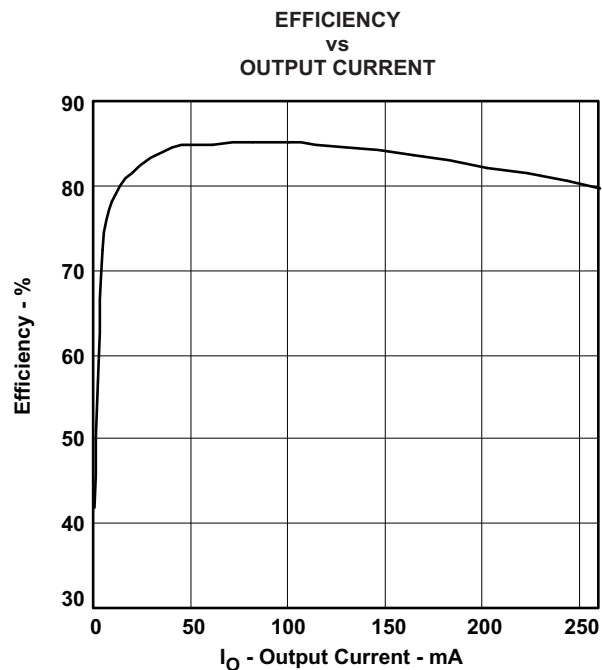


Figure 2. TPS61081 Efficiency With $V_{IN} = 3.6\text{ V}$ and VLCF5020T-4R7N1R7-1 Inductor

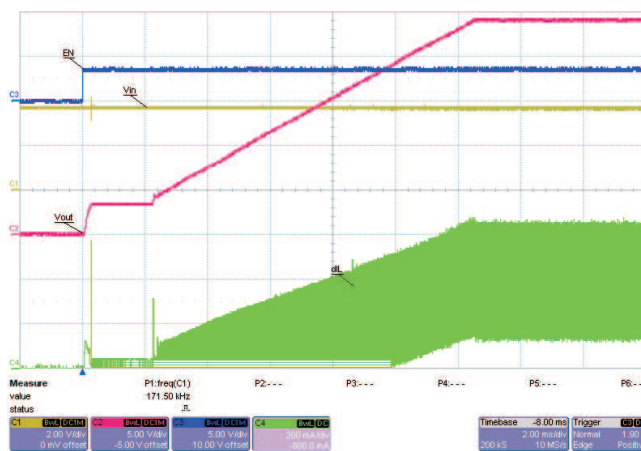


Figure 3. TPS61080 Start-Up With $V_{IN} = 3.6\text{ V}$ and $I_{OUT} = 50\text{ mA}$

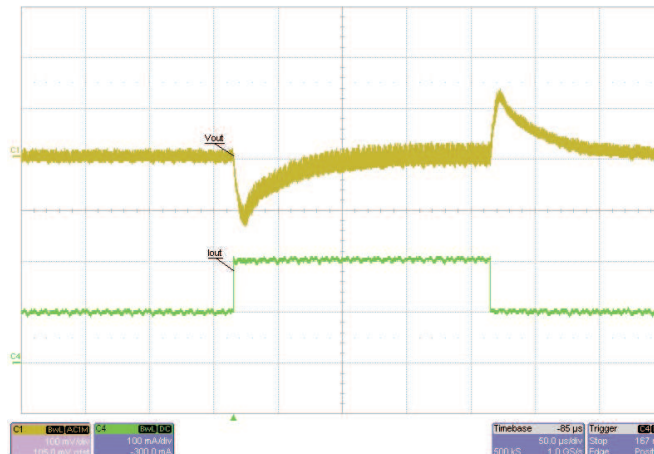


Figure 4. Load Transient Response From 100 mA to 200 mA With C4 = 10 μ F and C3 = 82 pF

3 Board Layout

This section provides the TPS6108xEVM board layout and illustrations.

3.1 Layout

Board layout is critical for all switch-mode power supplies. Figure 5, Figure 6, and Figure 7 show the board layout for the HPA147 PWB. The switching nodes with high-frequency noise are isolated from the noise-sensitive feedback circuitry, and careful attention has been given to the routing of high-frequency current loops. See the data sheet for further layout guidelines.

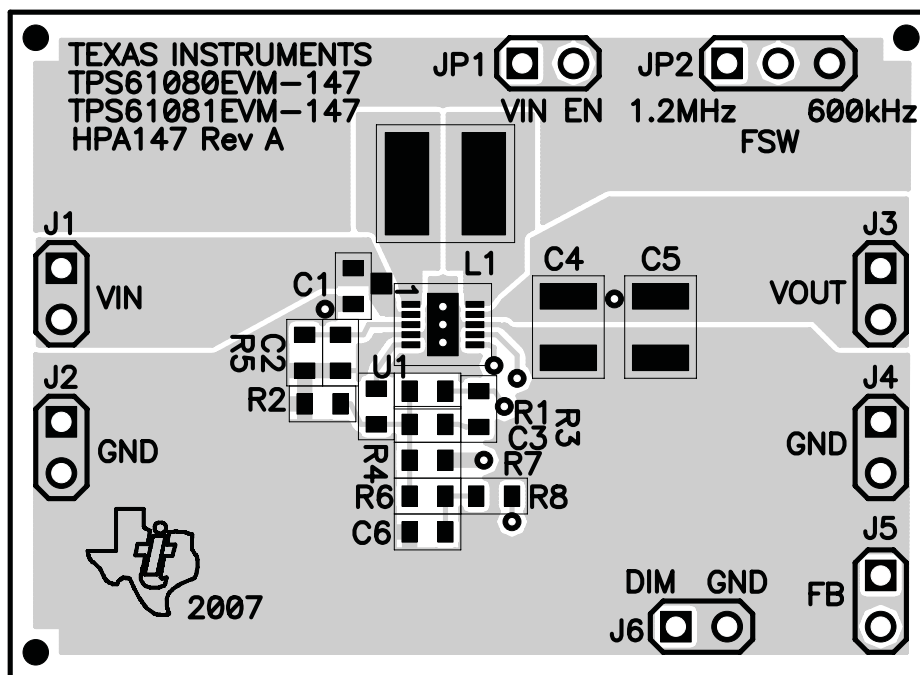


Figure 5. Top Assembly Layer

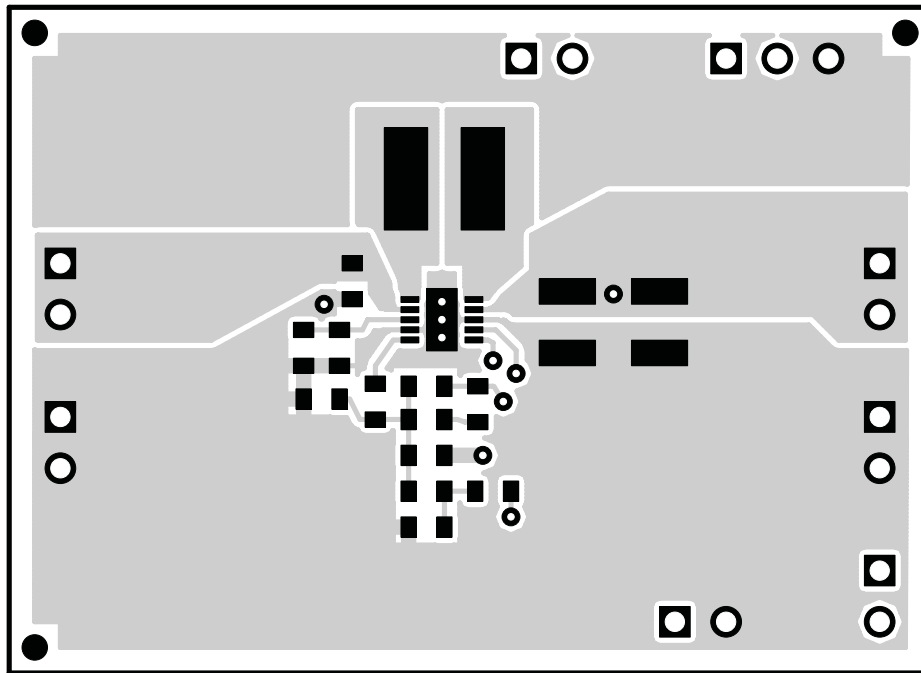


Figure 6. Top Layer Routing

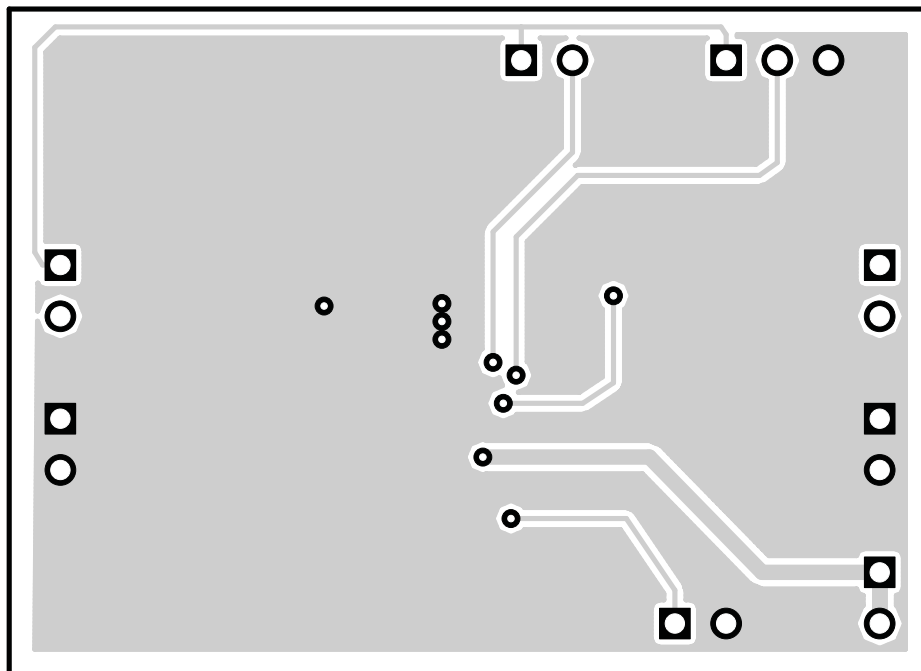


Figure 7. Bottom Layer Routing

4 Bill of Materials and Schematic

This section provides the TPS6108xEVM-147 bill of materials and schematics.

4.1 Bill of Materials

Table 2. Bill of Materials

HPA147A BOM								
Count		RefDes	Value	Description	Size	Part Number	Mfr	
-001	-002							
1	1	C1	4.7	Capacitor, Ceramic, 6.3V, X5R, 20%	0603	C1608X5R0J475M	TDK	
1	1	C2	0.047 μ F	Capacitor, Ceramic, 50V, X5R, 10%	0603	C1608X5R1H473KT	TDK	
1	1	C3	33pF	Capacitor, Ceramic, 50V, C0G, 5%	0603	C1608C0G1H330JT	TDK	
1	1	C4	4.7 μ F	Capacitor, Ceramic, 50V, X7R, 10%	1210	GRM32ER71H475K A88L	Murata	
0	0	C5	Open	Capacitor, Ceramic	1210			
0	0	C6	Open	Capacitor, Ceramic	0603			
6	6	J1-J6		Header, 2 pin, 100mil spacing, (36-pin strip)	0.100 x 2	PTC36SAAN	Sullins	
1	1	JP1		Header, 2 pin, 100mil spacing, (36-pin strip)	0.100 x 2	PTC36SAAN	Sullins	
1	1	JP2		Header, 3 pin, 100mil spacing, (36-pin strip)	0.100 x 3	PTC36SAAN	Sullins	
1	0	L1	4.7 μ H	Inductor, SMT, 0.95A, 125 milliohm	4.8mm x 4.8mm	CDRH4D16NP-4R7	Sumida	
0	1	L1	4.7 μ H	Inductor, SMT, 1.7A, 122 milliohm	0.157 x 0.157	VLCF5020T-4R7N1R7-1	TDK	
1	1	R1	442k	Resistor, Chip, 1/16W, 1%	0603	Std	Std	
1	1	R2	49.9k	Resistor, Chip, 1/16W, 1%	0603	Std	Std	
1	1	R3	0	Resistor, Chip, 1/16W, 1%	0603	Std	Std	
1	1	R4	100	Resistor, Chip, 1/16W, 1%	0603	Std	Std	
0	0	R5-R8	Open	Resistor, Chip, 1/16W, 1%	0603	Std	Std	
1	0	U1		IC, 1.2MHz/600kHz High Voltage DC/DC Boost Converter, 0.5A Integrated Switch	DRC10	TPS61080DRC	TI	
0	1	U1		IC, 1.2MHz/600kHz High Voltage DC/DC Boost Converter, 1.2A Integrated Switch	DRC10	TPS61081DRC	TI	
1	1	-		PCB, 1.8 in. x 1.1 in. x 0.062 in.		HPA147	Any	
2	2	-		Shunt, 100mil, Black	0.100	929950-00	3M	

4.2 Schematic

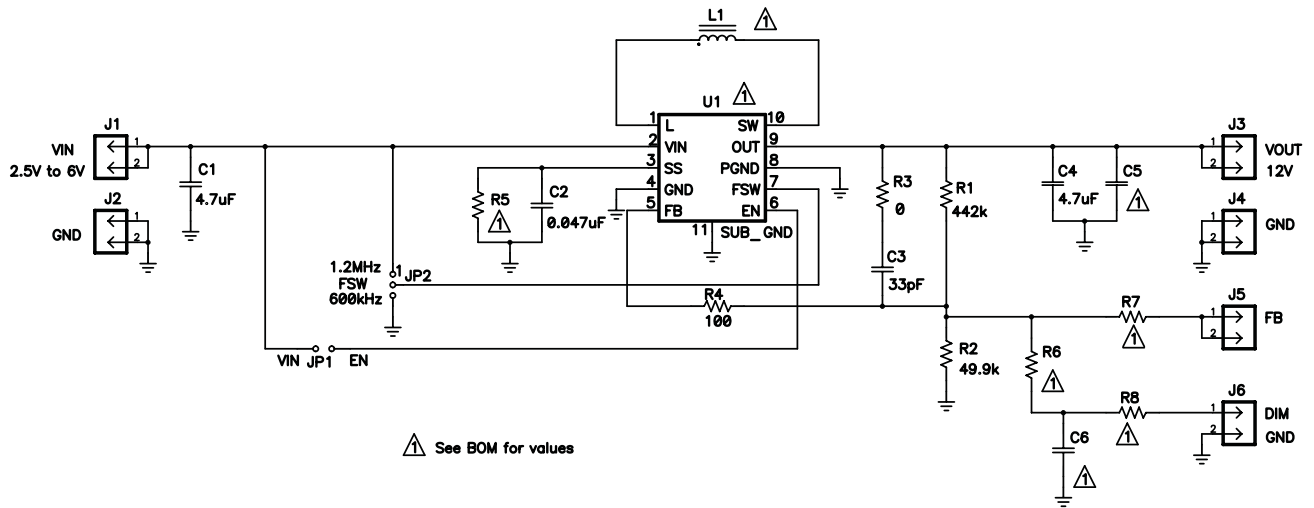


Figure 8. TPS6108xEVM-147 Schematic

EVALUATION BOARD/KIT IMPORTANT NOTICE

Texas Instruments (TI) provides the enclosed product(s) under the following conditions:

This evaluation board/kit is intended for use for **ENGINEERING DEVELOPMENT, DEMONSTRATION, OR EVALUATION PURPOSES ONLY** and is not considered by TI to be a finished end-product fit for general consumer use. Persons handling the product(s) must have electronics training and observe good engineering practice standards. As such, the goods being provided are not intended to be complete in terms of required design-, marketing-, and/or manufacturing-related protective considerations, including product safety and environmental measures typically found in end products that incorporate such semiconductor components or circuit boards. This evaluation board/kit does not fall within the scope of the European Union directives regarding electromagnetic compatibility, restricted substances (RoHS), recycling (WEEE), FCC, CE or UL, and therefore may not meet the technical requirements of these directives or other related directives.

Should this evaluation board/kit not meet the specifications indicated in the User's Guide, the board/kit may be returned within 30 days from the date of delivery for a full refund. **THE FOREGOING WARRANTY IS THE EXCLUSIVE WARRANTY MADE BY SELLER TO BUYER AND IS IN LIEU OF ALL OTHER WARRANTIES, EXPRESSED, IMPLIED, OR STATUTORY, INCLUDING ANY WARRANTY OF MERCHANTABILITY OR FITNESS FOR ANY PARTICULAR PURPOSE.**

The user assumes all responsibility and liability for proper and safe handling of the goods. Further, the user indemnifies TI from all claims arising from the handling or use of the goods. Due to the open construction of the product, it is the user's responsibility to take any and all appropriate precautions with regard to electrostatic discharge.

EXCEPT TO THE EXTENT OF THE INDEMNITY SET FORTH ABOVE, NEITHER PARTY SHALL BE LIABLE TO THE OTHER FOR ANY INDIRECT, SPECIAL, INCIDENTAL, OR CONSEQUENTIAL DAMAGES.

TI currently deals with a variety of customers for products, and therefore our arrangement with the user **is not exclusive**.

TI assumes **no liability for applications assistance, customer product design, software performance, or infringement of patents or services described herein.**

Please read the User's Guide and, specifically, the Warnings and Restrictions notice in the User's Guide prior to handling the product. This notice contains important safety information about temperatures and voltages. For additional information on TI's environmental and/or safety programs, please contact the TI application engineer or visit www.ti.com/esh.

No license is granted under any patent right or other intellectual property right of TI covering or relating to any machine, process, or combination in which such TI products or services might be or are used.

FCC Warning

This evaluation board/kit is intended for use for **ENGINEERING DEVELOPMENT, DEMONSTRATION, OR EVALUATION PURPOSES ONLY** and is not considered by TI to be a finished end-product fit for general consumer use. It generates, uses, and can radiate radio frequency energy and has not been tested for compliance with the limits of computing devices pursuant to part 15 of FCC rules, which are designed to provide reasonable protection against radio frequency interference. Operation of this equipment in other environments may cause interference with radio communications, in which case the user at his own expense will be required to take whatever measures may be required to correct this interference.

EVM WARNINGS AND RESTRICTIONS

It is important to operate this EVM within the input voltage range of 2.5 V to 6 V and the output voltage range of up to 27 V, but 12 V as configured.

Exceeding the specified input range may cause unexpected operation and/or irreversible damage to the EVM. If there are questions concerning the input range, please contact a TI field representative prior to connecting the input power.

Applying loads outside of the specified output range may result in unintended operation and/or possible permanent damage to the EVM. Please consult the EVM User's Guide prior to connecting any load to the EVM output. If there is uncertainty as to the load specification, please contact a TI field representative.

During normal operation, some circuit components may have case temperatures greater than 125° C. The EVM is designed to operate properly with certain components above 85° C as long as the input and output ranges are maintained. These components include but are not limited to linear regulators, switching transistors, pass transistors, and current sense resistors. These types of devices can be identified using the EVM schematic located in the EVM User's Guide. When placing measurement probes near these devices during operation, please be aware that these devices may be very warm to the touch.

Mailing Address: Texas Instruments, Post Office Box 655303, Dallas, Texas 75265
Copyright © 2007, Texas Instruments Incorporated

IMPORTANT NOTICE

Texas Instruments Incorporated and its subsidiaries (TI) reserve the right to make corrections, modifications, enhancements, improvements, and other changes to its products and services at any time and to discontinue any product or service without notice. Customers should obtain the latest relevant information before placing orders and should verify that such information is current and complete. All products are sold subject to TI's terms and conditions of sale supplied at the time of order acknowledgment.

TI warrants performance of its hardware products to the specifications applicable at the time of sale in accordance with TI's standard warranty. Testing and other quality control techniques are used to the extent TI deems necessary to support this warranty. Except where mandated by government requirements, testing of all parameters of each product is not necessarily performed.

TI assumes no liability for applications assistance or customer product design. Customers are responsible for their products and applications using TI components. To minimize the risks associated with customer products and applications, customers should provide adequate design and operating safeguards.

TI does not warrant or represent that any license, either express or implied, is granted under any TI patent right, copyright, mask work right, or other TI intellectual property right relating to any combination, machine, or process in which TI products or services are used. Information published by TI regarding third-party products or services does not constitute a license from TI to use such products or services or a warranty or endorsement thereof. Use of such information may require a license from a third party under the patents or other intellectual property of the third party, or a license from TI under the patents or other intellectual property of TI.

Reproduction of information in TI data books or data sheets is permissible only if reproduction is without alteration and is accompanied by all associated warranties, conditions, limitations, and notices. Reproduction of this information with alteration is an unfair and deceptive business practice. TI is not responsible or liable for such altered documentation.

Resale of TI products or services with statements different from or beyond the parameters stated by TI for that product or service voids all express and any implied warranties for the associated TI product or service and is an unfair and deceptive business practice. TI is not responsible or liable for any such statements.

TI products are not authorized for use in safety-critical applications (such as life support) where a failure of the TI product would reasonably be expected to cause severe personal injury or death, unless officers of the parties have executed an agreement specifically governing such use. Buyers represent that they have all necessary expertise in the safety and regulatory ramifications of their applications, and acknowledge and agree that they are solely responsible for all legal, regulatory and safety-related requirements concerning their products and any use of TI products in such safety-critical applications, notwithstanding any applications-related information or support that may be provided by TI. Further, Buyers must fully indemnify TI and its representatives against any damages arising out of the use of TI products in such safety-critical applications.

TI products are neither designed nor intended for use in military/aerospace applications or environments unless the TI products are specifically designated by TI as military-grade or "enhanced plastic." Only products designated by TI as military-grade meet military specifications. Buyers acknowledge and agree that any such use of TI products which TI has not designated as military-grade is solely at the Buyer's risk, and that they are solely responsible for compliance with all legal and regulatory requirements in connection with such use.

TI products are neither designed nor intended for use in automotive applications or environments unless the specific TI products are designated by TI as compliant with ISO/TS 16949 requirements. Buyers acknowledge and agree that, if they use any non-designated products in automotive applications, TI will not be responsible for any failure to meet such requirements.

Following are URLs where you can obtain information on other Texas Instruments products and application solutions:

Products		Applications	
Amplifiers	amplifier.ti.com	Audio	www.ti.com/audio
Data Converters	dataconverter.ti.com	Automotive	www.ti.com/automotive
DSP	dsp.ti.com	Broadband	www.ti.com/broadband
Interface	interface.ti.com	Digital Control	www.ti.com/digitalcontrol
Logic	logic.ti.com	Military	www.ti.com/military
Power Mgmt	power.ti.com	Optical Networking	www.ti.com/opticalnetwork
Microcontrollers	microcontroller.ti.com	Security	www.ti.com/security
RFID	www.ti-rfid.com	Telephony	www.ti.com/telephony
Low Power Wireless	www.ti.com/lpw	Video & Imaging	www.ti.com/video
		Wireless	www.ti.com/wireless

Mailing Address: Texas Instruments, Post Office Box 655303, Dallas, Texas 75265
Copyright © 2007, Texas Instruments Incorporated