

TPS54528 Step-Down Converter Evaluation Module User's Guide



ABSTRACT

This user's guide contains information for the TPS54528 as well as support documentation for the TPS54528EVM-052 evaluation module. Included are the performance specifications, schematic, and the bill of materials of the TPS54528EVM-052.

Table of Contents

| | |
|--|----|
| 1 Introduction | 3 |
| 2 Performance Specification Summary | 4 |
| 3 Modifications | 5 |
| 3.1 Output Voltage Setpoint | 5 |
| 3.2 Output Filter and Closed-Loop Response | 5 |
| 4 Test Setup and Results | 6 |
| 4.1 Input/Output Connections | 6 |
| 4.2 Start-Up Procedure | 6 |
| 4.3 Efficiency | 7 |
| 4.4 Load Regulation | 8 |
| 4.5 Line Regulation | 8 |
| 4.6 Load Transient Response | 9 |
| 4.7 Output Voltage Ripple | 10 |
| 4.8 Input Voltage Ripple | 11 |
| 4.9 Start-Up | 12 |
| 5 Board Layout | 14 |
| 5.1 Layout | 14 |
| 6 Schematic, Bill of Materials, and Reference | 17 |
| 6.1 Schematic | 17 |
| 6.2 Bill of Materials | 18 |
| 6.3 Reference | 18 |
| 7 Revision History | 18 |

List of Figures

| | |
|---|----|
| Figure 4-1. TPS54528EVM-052 Efficiency | 7 |
| Figure 4-2. TPS54528EVM-052 Light-Load Efficiency | 7 |
| Figure 4-3. TPS54528EVM-052 Load Regulation, $V_{IN} = 5\text{ V}$ and $V_{IN} = 12\text{ V}$ | 8 |
| Figure 4-4. TPS54528EVM-052 Line Regulation | 8 |
| Figure 4-5. TPS54528EVM-052 Load Transient Response, 1.25 A to 3.75 A | 9 |
| Figure 4-6. TPS54528EVM-052 Load Transient Response, 0 A to 2.5 A | 9 |
| Figure 4-7. TPS54528EVM-052 Output Voltage Ripple | 10 |
| Figure 4-8. TPS54528EVM-052 Start of Eco-mode™ Output Voltage Ripple | 10 |
| Figure 4-9. TPS54528EVM-052 Eco-mode™ Output Voltage Ripple | 11 |
| Figure 4-10. TPS54528EVM-052 Input Voltage Ripple | 11 |
| Figure 4-11. TPS54528EVM-052 Start-Up Relative to V_{IN} With SS | 12 |
| Figure 4-12. TPS54528EVM-052 Start-Up Relative to V_{IN} With VREG5 | 12 |
| Figure 4-13. TPS54528EVM-052 Start-Up Relative to EN With SS | 13 |
| Figure 4-14. TPS54528EVM-052 Start-Up Relative to EN With VREG5 | 13 |
| Figure 5-1. Top Assembly | 14 |
| Figure 5-2. Top Layer | 14 |
| Figure 5-3. Internal Layer 1 | 15 |
| Figure 5-4. Internal Layer 2 | 15 |

| | |
|--|----|
| Figure 5-5. Bottom Layer..... | 16 |
| Figure 6-1. TPS54528EVM-052 Schematic Diagram..... | 17 |

List of Tables

| | |
|--|----|
| Table 1-1. Input Voltage and Output Current Summary..... | 3 |
| Table 2-1. TPS54528EVM-052 Performance Specifications Summary..... | 4 |
| Table 3-1. Output Voltages..... | 5 |
| Table 4-1. Connection and Test Points..... | 6 |
| Table 6-1. Bill of Materials..... | 18 |

Trademarks

D-CAP2™, and are trademarks of Texas Instruments.

Eco-mode™ is a trademark of TI.

All trademarks are the property of their respective owners.

1 Introduction

The TPS54528 is a single, adaptive on-time, D-CAP2™-mode, synchronous buck converter requiring a low, external component count. The D-CAP2™ control circuit is optimized for low-ESR output capacitors such as POSCAP, SP-CAP, or ceramic types and features fast transient response with no external compensation. The switching frequency is internally set at a nominal 650 kHz. The high-side and low-side switching MOSFETs are incorporated inside the TPS54528 package along with the gate drive circuitry. The low drain-to-source on resistance of the MOSFETs allows the TPS54528 to achieve high efficiencies and helps keep the junction temperature low at high-output currents. The TPS54528 also features auto-skip Eco-mode™ operation for improved light-load efficiency. The TPS54528 dc/dc synchronous converter is designed to provide up to a 5-A output from an input voltage source of 4.5 V to 18 V. The output voltage range is from 0.76 V to 6 V. Rated input voltage and output current range for the evaluation module are given in [Table 1-1](#).

The TPS54528EVM-052 evaluation module is a single, synchronous buck converter providing 1.05 V at 5 A from 4.5-V to 18-V input. This user's guide describes the TPS54528EVM-052 performance.

Table 1-1. Input Voltage and Output Current Summary

| EVM | Input Voltage Range | Output Current Range |
|-----------------|---|----------------------|
| TPS54528EVM-052 | $V_{IN} = 4.5 \text{ V to } 18 \text{ V}$ | 0 A to 5 A |

2 Performance Specification Summary

A summary of the TPS54528EVM-052 performance specifications is provided in [Table 2-1](#). Specifications are given for an input voltage of $V_{IN} = 12\text{ V}$ and an output voltage of 1.05 V , unless otherwise noted. The ambient temperature is 25°C for all measurement, unless otherwise noted.

Table 2-1. TPS54528EVM-052 Performance Specifications Summary

| Specifications | Test Conditions | Min | Typ | Max | Unit |
|----------------------------------|---|-----|---------------|-----|------------------|
| Input voltage range (V_{IN}) | | 4.5 | 12 | 18 | V |
| Output voltage | | | 1.05 | | V |
| Operating frequency | $V_{IN} = 12\text{ V}$, $I_O = 2\text{ A}$ | | 650 | | kHz |
| Output current range | | 0 | | 5 | A |
| Line regulation | $I_O = 2.5\text{ A}$ | | +/- 0.33 | | % |
| Load regulation | $V_{IN} = 12\text{ V}$ | | +0.9/ -0.1 | | % |
| Overcurrent limit | $V_{IN} = 12\text{ V}$, $L_O = 1.5\text{ }\mu\text{H}$ | 5.6 | 6.4 | 7.9 | A |
| Output ripple voltage | $V_{IN} = 12\text{ V}$, $I_O = 5\text{ A}$ | | 15 | | mV _{PP} |
| Maximum efficiency | $V_{IN} = 5\text{ V}$, $I_O = 0.7\text{ A}$ | | 87.8 | | % |

3 Modifications

These evaluation modules are designed to provide access to the features of the TPS54528. Some modifications can be made to this module.

3.1 Output Voltage Setpoint

To change the output voltage of the EVMs, it is necessary to change the value of resistor R1. Changing the value of R1 can change the output voltage above 0.765 V. The value of R1 for a specific output voltage can be calculated using [Equation 1](#).

For output voltage from 0.76 V to 6 V:

$$V_O = 0.765 \times \left(1 + \frac{R_1}{R_2} \right) \quad (1)$$

[Table 3-1](#) lists the R1 values for some common output voltages. For higher output voltages of 1.8 V or above, a feedforward capacitor (C4) may be required to improve phase margin. Pads for this component (C4) are provided on the printed-circuit board. Note that the resistor values given in [Table 3-1](#) are standard values and not the exact value calculated using [Equation 1](#).

Table 3-1. Output Voltages

| Output Voltage (V) | R1 (kΩ) | R2 (kΩ) | C4 (pF) | L1 (μH) | C9, C10, C11 Total Capacitance (μF) |
|--------------------|---------|---------|---------|---------|-------------------------------------|
| 1 | 6.81 | 22.1 | | 1 - 1.5 | 22 - 68 |
| 1.05 | 8.25 | 22.1 | | 1 - 1.5 | 22 - 68 |
| 1.2 | 12.7 | 22.1 | | 1 - 1.5 | 22 - 68 |
| 1.5 | 21.5 | 22.1 | | 1.5 | 22 - 68 |
| 1.8 | 30.1 | 22.1 | 5 - 22 | 1.5 | 22 - 68 |
| 2.5 | 49.9 | 22.1 | 5 - 22 | 2.2 | 22 - 68 |
| 3.3 | 73.2 | 22.1 | 5 - 22 | 2.2 | 22 - 68 |
| 5 | 124 | 22.1 | 5 - 22 | 3.3 | 22 - 68 |

3.2 Output Filter and Closed-Loop Response

The TPS54528 relies on the output filter characteristics to ensure stability of the control loop. The recommended output filter components for common output voltages are given in [Table 3-1](#). It may be possible for other output filter component values to provide acceptable closed-loop characteristics. R3 and TP4 are provided for convenience in breaking the control loop and measuring the closed-loop response.

4 Test Setup and Results

This section describes how to properly connect, set up, and use the TPS54528EVM-052. It also includes test results typical for the evaluation module and efficiency, output load regulation, output line regulation, load transient response, output voltage ripple, input voltage ripple, start-up, and switching frequency.

4.1 Input/Output Connections

Table 4-1 shows the input/output connectors and test points of TPS54528EVM-052. Connect a power supply capable of supplying 2 A to J1 through a pair of 20 AWG wires. Connect the load to J2 through a pair of 20 AWG wires. The maximum load current capability is 5 A. Minimize wire lengths to reduce losses in the wires. Test point TP1 provides a place to monitor the input voltages (V_{IN}) with TP2 providing a convenient ground reference. Use TP8 to monitor the output voltage with TP9 as the ground reference.

Table 4-1. Connection and Test Points

| Reference Designator | Function |
|----------------------|--|
| J1 | V_{IN} (See Table 1-1 for V_{IN} range.) |
| J2 | V_{OUT} , 1.05 V at 5 A maximum |
| JP1 | EN control. Connect EN to OFF to disable, connect EN to ON to enable |
| TP1 | V_{IN} test point at V_{IN} connector |
| TP2 | GND test point at V_{IN} |
| TP3 | EN test point |
| TP4 | Loop response measurement test point |
| TP5 | VREG5 test point |
| TP6 | Switch node test point |
| TP7 | Analog ground test point |
| TP8 | Output voltage test point |
| TP9 | Ground test point at output connector |

4.2 Start-Up Procedure

1. Ensure that the jumper at JP1 (Enable control) is set from EN to OFF.
2. Apply appropriate V_{IN} voltage to VIN and PGND terminals at J1.
3. Move the jumper at JP1 (Enable control) to cover EN and ON. The EVM enables the output voltage.

4.3 Efficiency

Figure 4-1 shows the efficiency for the TPS54528EVM-052 at an ambient temperature of 25°C.

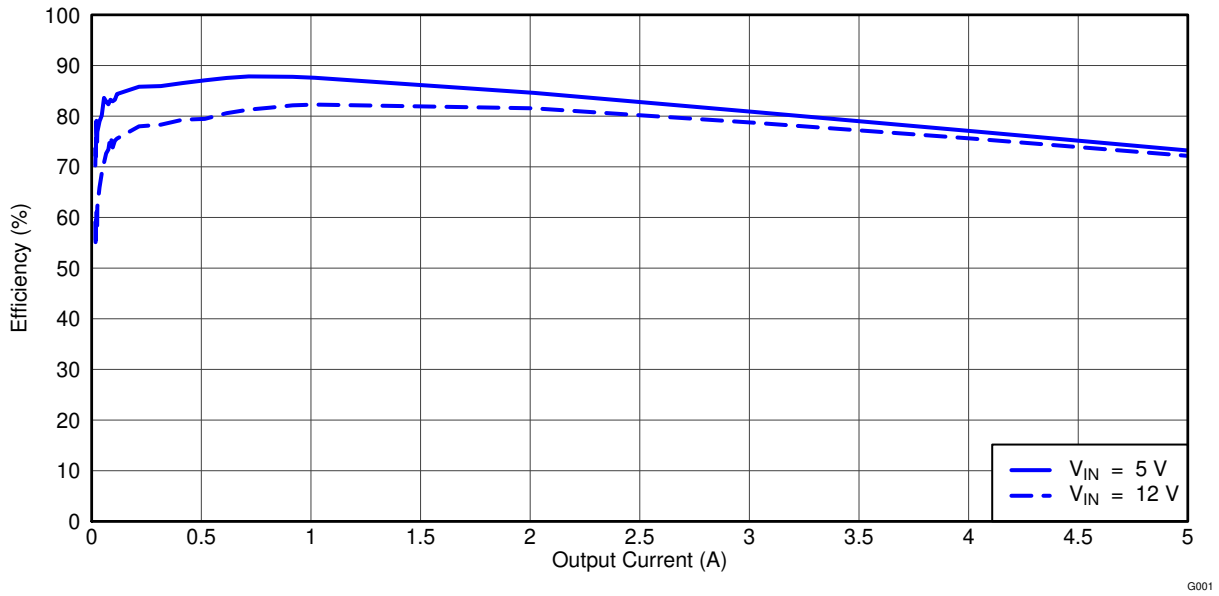


Figure 4-1. TPS54528EVM-052 Efficiency

Figure 4-2 shows the efficiency at light loads for the TPS54528EVM-052 at an ambient temperature of 25°C.

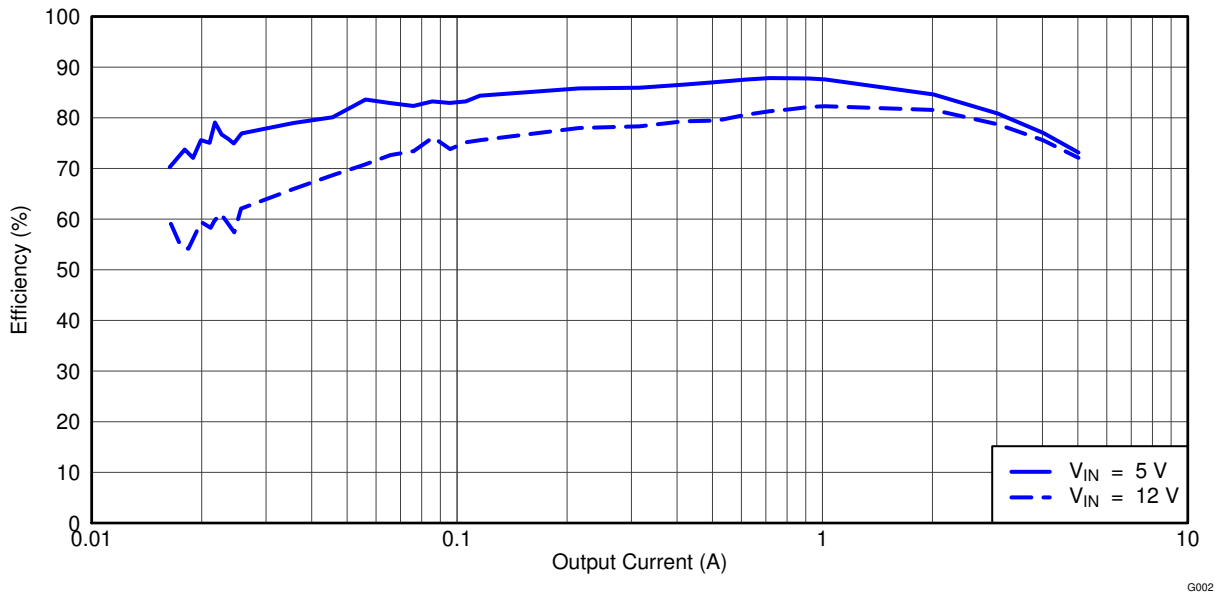


Figure 4-2. TPS54528EVM-052 Light-Load Efficiency

4.4 Load Regulation

The load regulation for the TPS54528EVM-052 is shown in Figure 4-3.

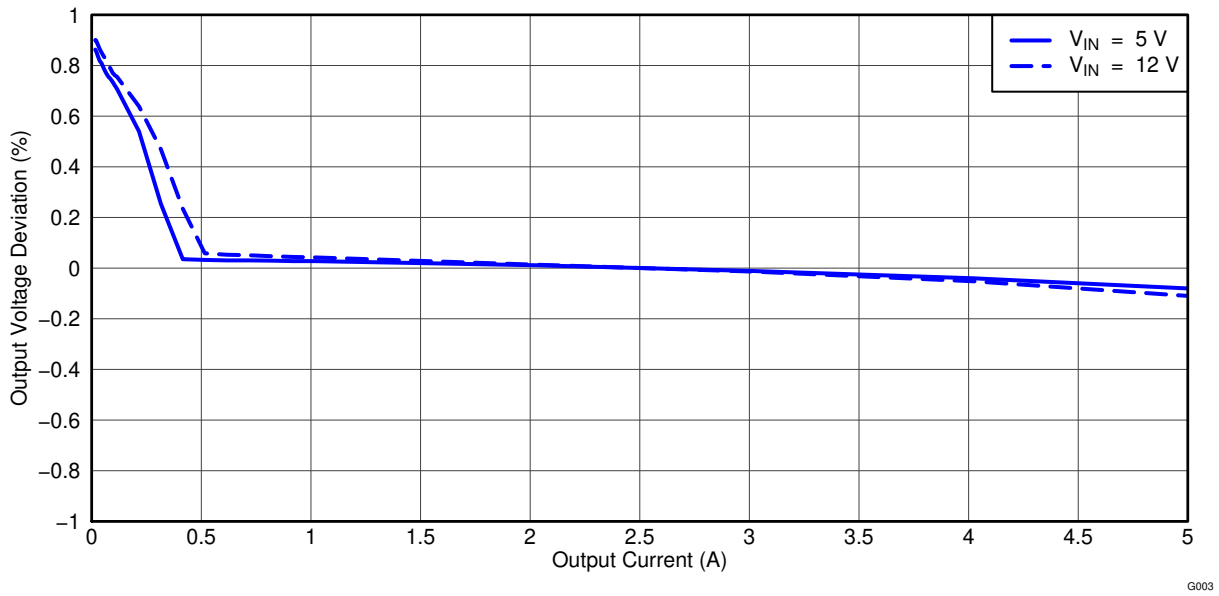


Figure 4-3. TPS54528EVM-052 Load Regulation, $V_{IN} = 5V$ and $V_{IN} = 12V$

4.5 Line Regulation

The line regulation for the TPS54528EVM-052 is shown in Figure 4-4.

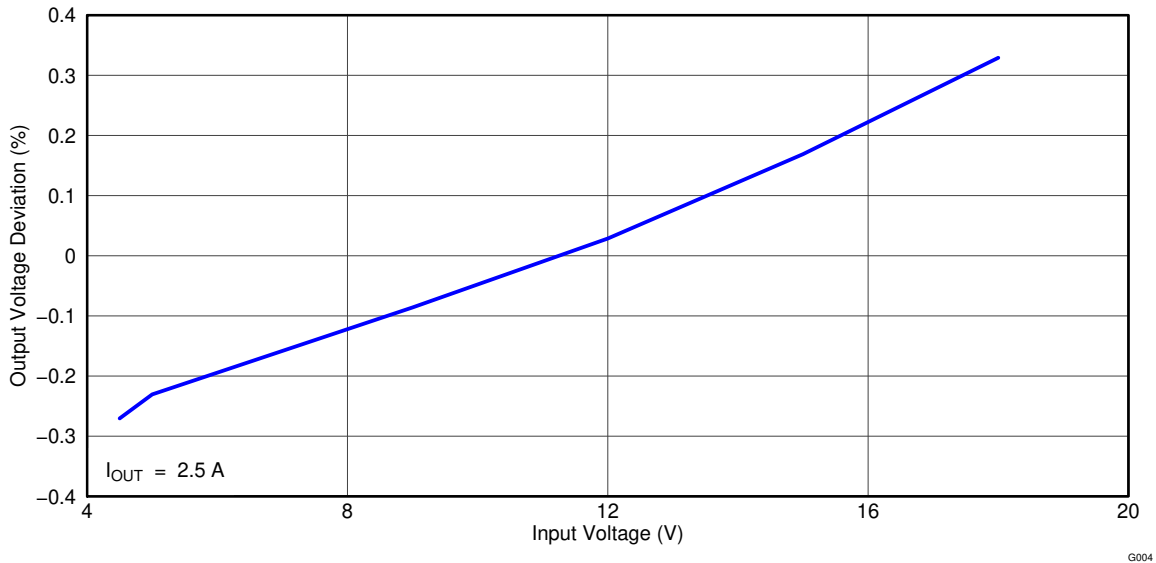


Figure 4-4. TPS54528EVM-052 Line Regulation

4.6 Load Transient Response

The TPS54528EVM-052 response to load transient steps are shown in [Figure 4-5](#) and [Figure 4-6](#). Total peak-to-peak voltage variation is as shown.

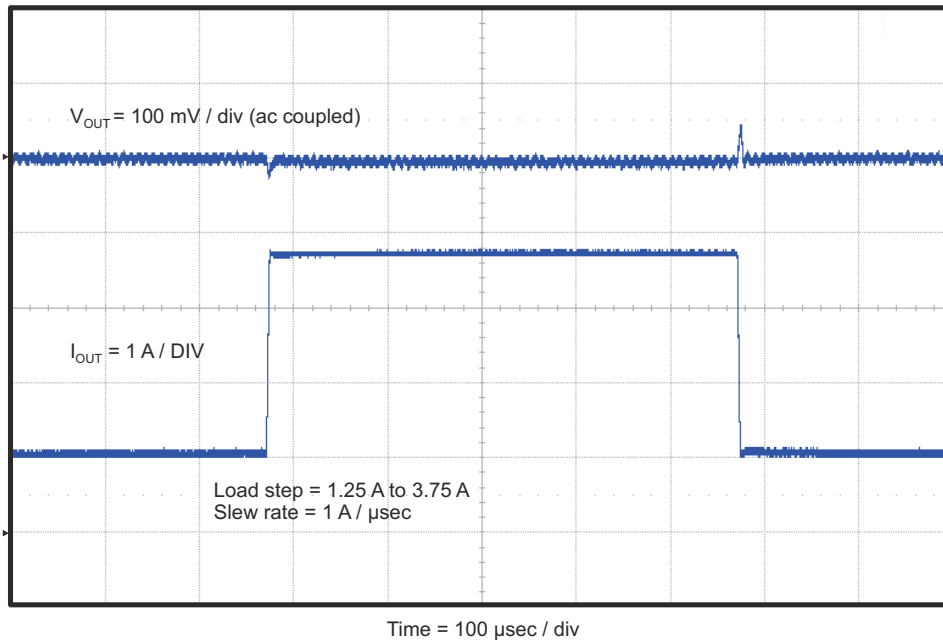


Figure 4-5. TPS54528EVM-052 Load Transient Response, 1.25 A to 3.75 A

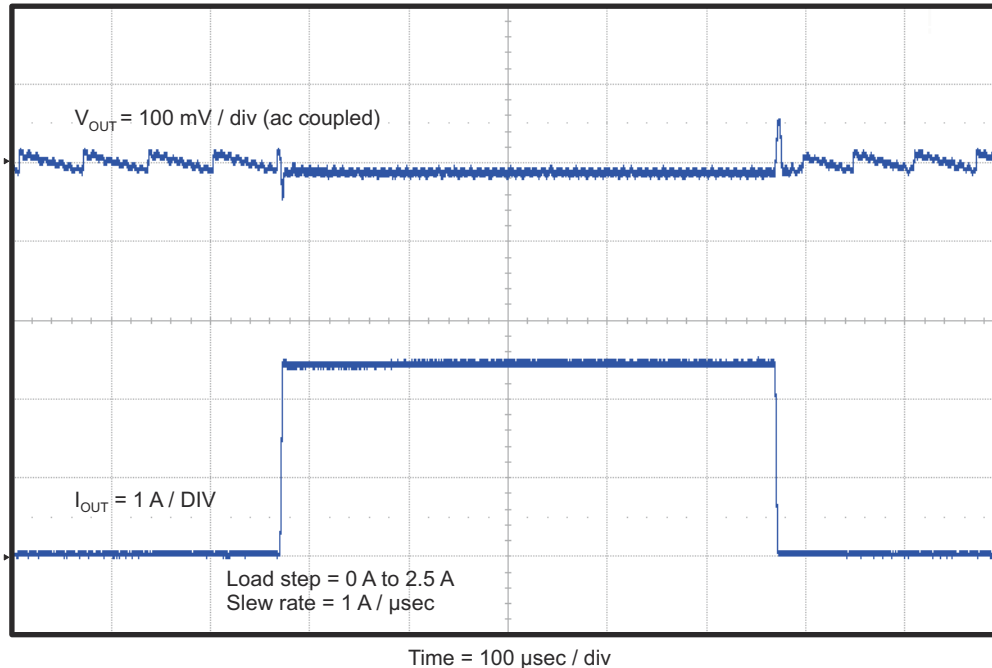


Figure 4-6. TPS54528EVM-052 Load Transient Response, 0 A to 2.5 A

4.7 Output Voltage Ripple

The TPS54528EVM-052 output voltage ripple is shown in [Figure 4-7](#). The output current is the rated full load of 5 A.

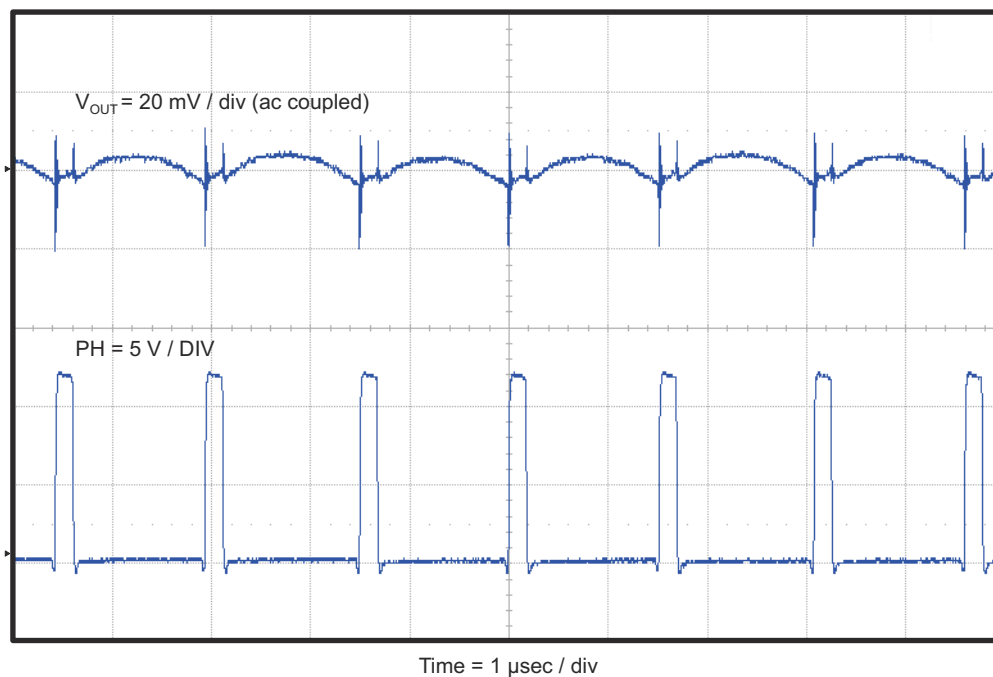


Figure 4-7. TPS54528EVM-052 Output Voltage Ripple

The TPS54528EVM-052 output voltage ripple during the start of Eco-mode™ operation is shown in [Figure 4-8](#). The output current is 30 mA.

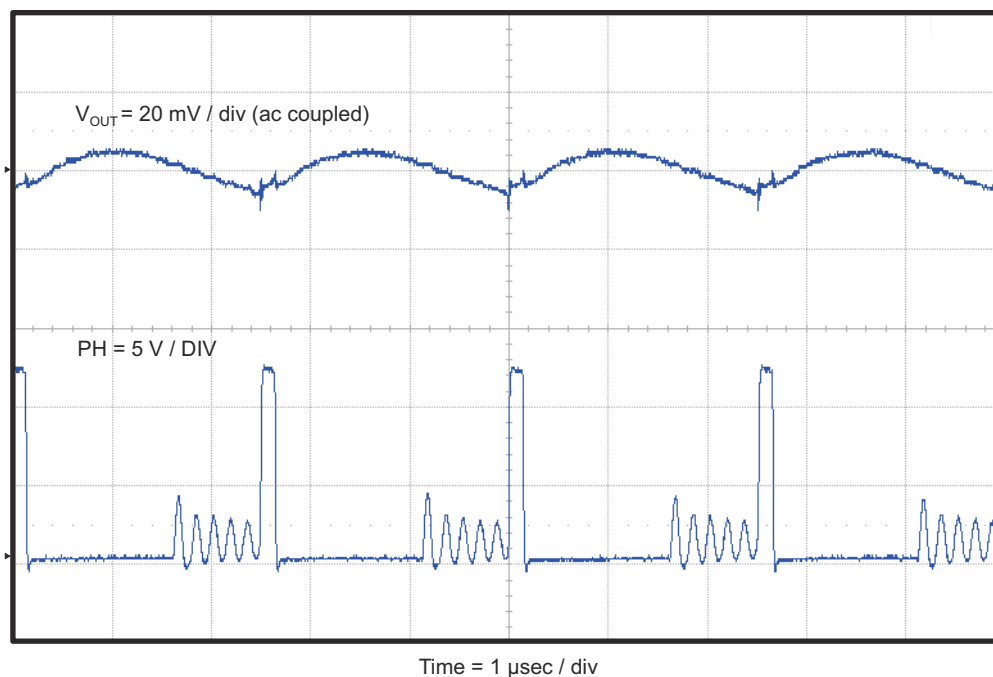


Figure 4-8. TPS54528EVM-052 Start of Eco-mode™ Output Voltage Ripple

The TPS54528EVM-052 output voltage ripple during Eco-mode™ operation is shown in [Figure 4-9](#). The output current is 2.1 mA.

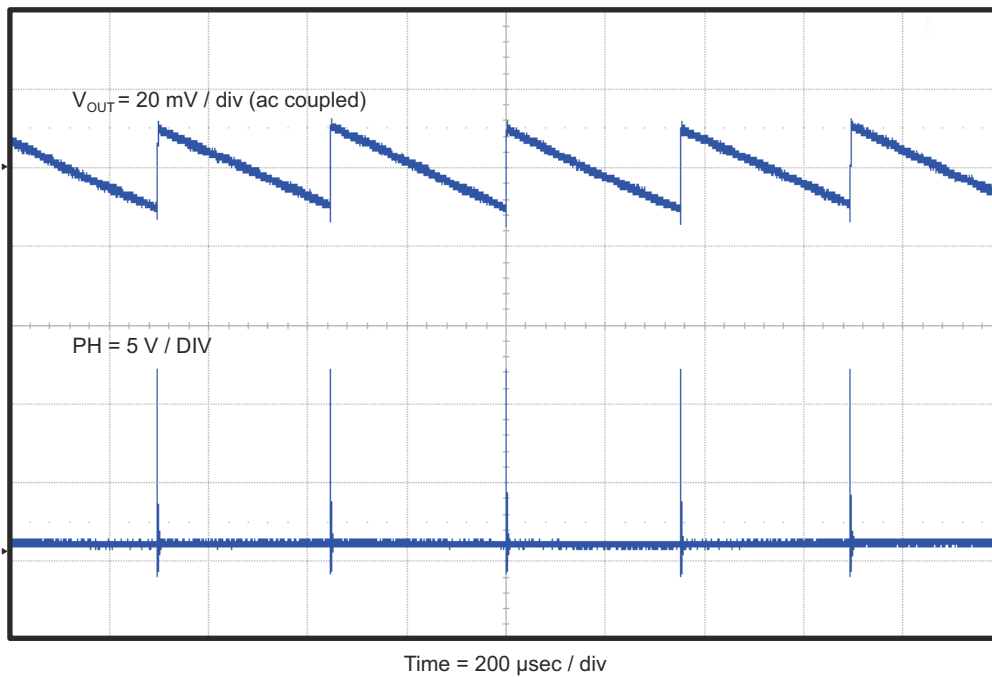


Figure 4-9. TPS54528EVM-052 Eco-mode™ Output Voltage Ripple

4.8 Input Voltage Ripple

The TPS54528EVM-052 input voltage ripple is shown in [Figure 4-10](#). The output current is the rated full load of 5 A.

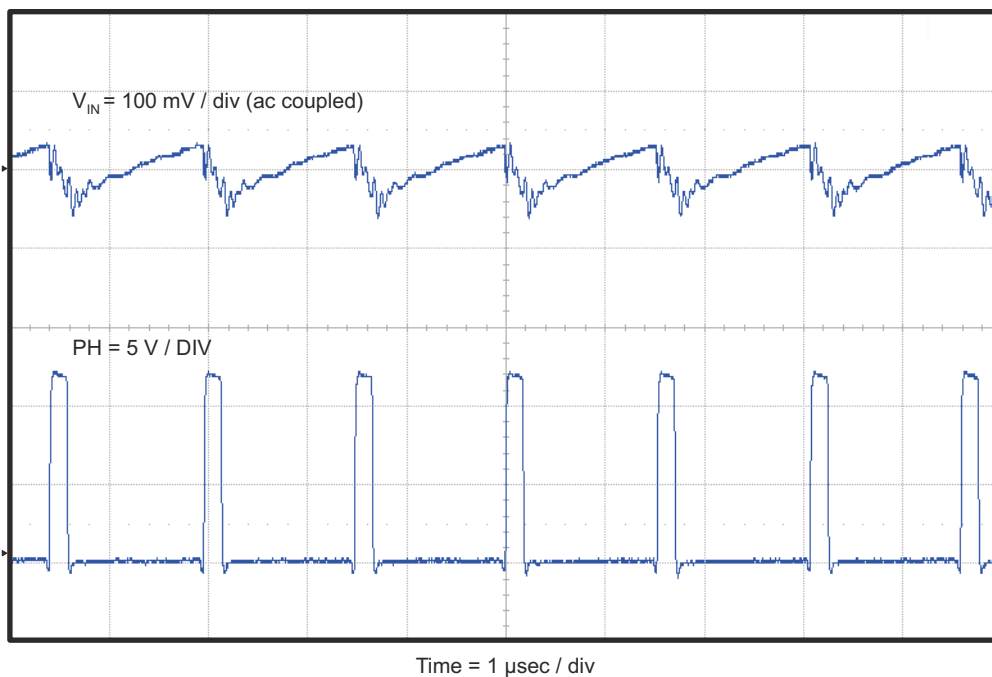


Figure 4-10. TPS54528EVM-052 Input Voltage Ripple

4.9 Start-Up

The TPS54528EVM-052 start-up waveforms relative to V_{IN} are shown in [Figure 4-11](#) and [Figure 4-12](#).

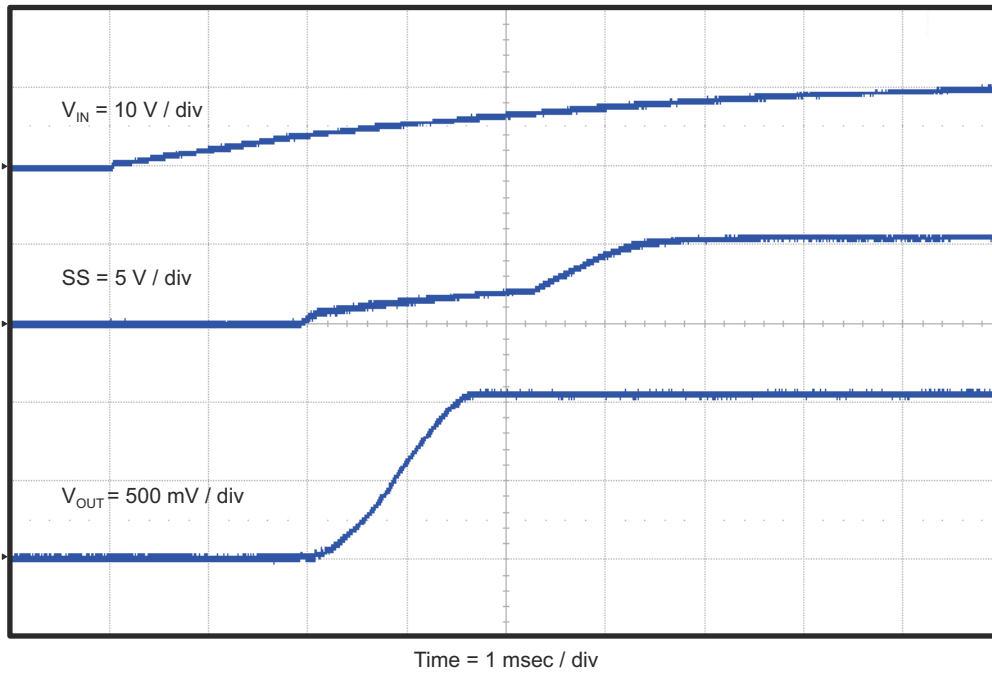


Figure 4-11. TPS54528EVM-052 Start-Up Relative to V_{IN} With SS

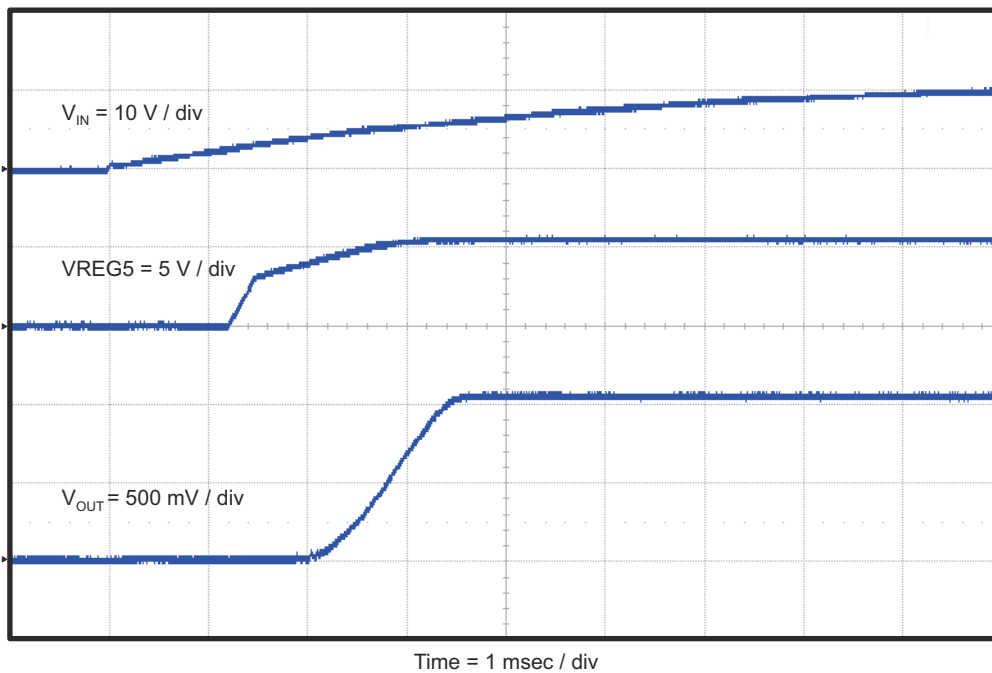


Figure 4-12. TPS54528EVM-052 Start-Up Relative to V_{IN} With VREG5

The TPS54528EVM-052 start-up waveforms relative to enable (EN) are shown in [Figure 4-13](#) and [Figure 4-14](#).

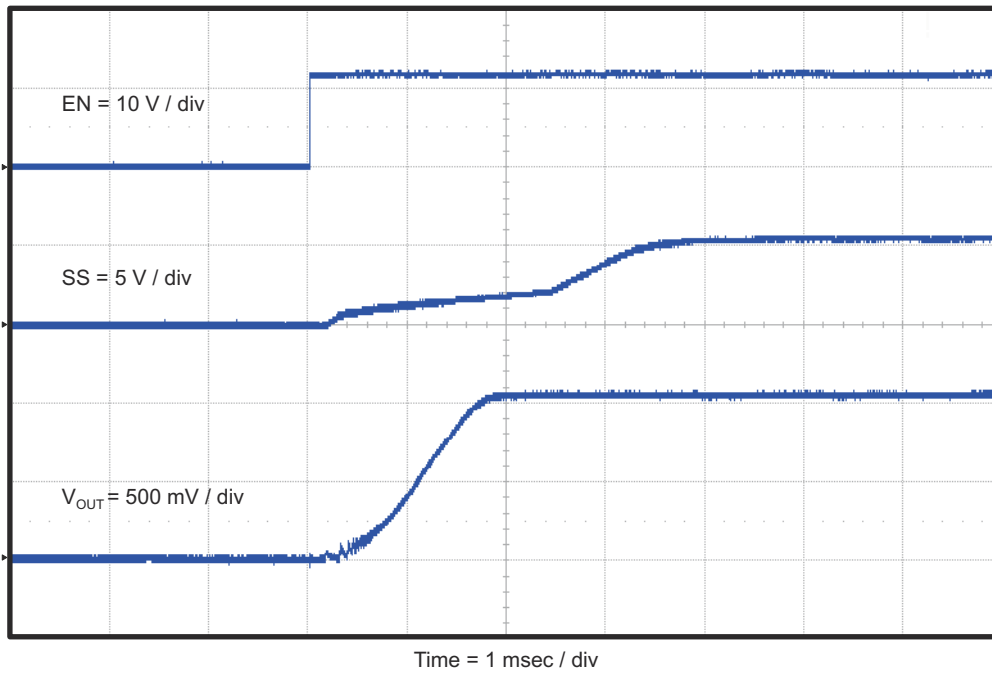


Figure 4-13. TPS54528EVM-052 Start-Up Relative to EN With SS

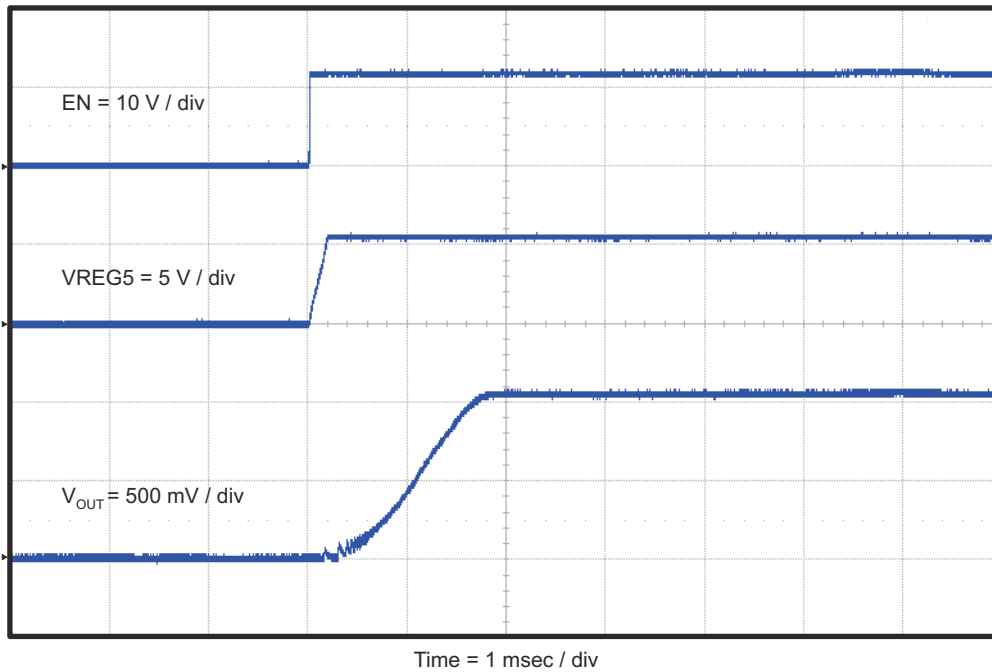


Figure 4-14. TPS54528EVM-052 Start-Up Relative to EN With VREG5

5 Board Layout

This section provides description of the TPS54528EVM-052, board layout, and layer illustrations.

5.1 Layout

The board layout for the TPS54528EVM-052 is shown in [Figure 5-1](#) through [Figure 5-5](#). The top layer contains the main power traces for VIN, VO, and ground. Also on the top layer are connections for the pins of the TPS54528 and a large area filled with ground. Many of the signal traces also are located on the top side. The input decoupling capacitors are located as close to the IC as possible. The input and output connectors, test points, and all of the components are located on the top side. An analog ground (GND) area is provided on the top side. Analog ground (GND) and power ground (PGND) are connected at a single point on the top layer near C6. The bottom layer is primarily power ground but also has a trace to connect VIN to the enable jumper, a trace to connect VREG5 to TP5, and the feedback trace from VOUT to the voltage setpoint divider network.

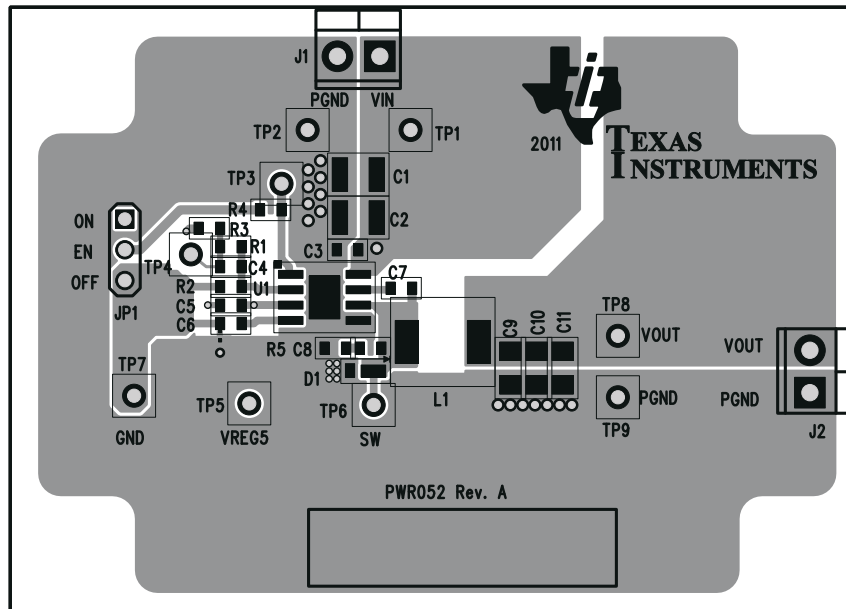


Figure 5-1. Top Assembly

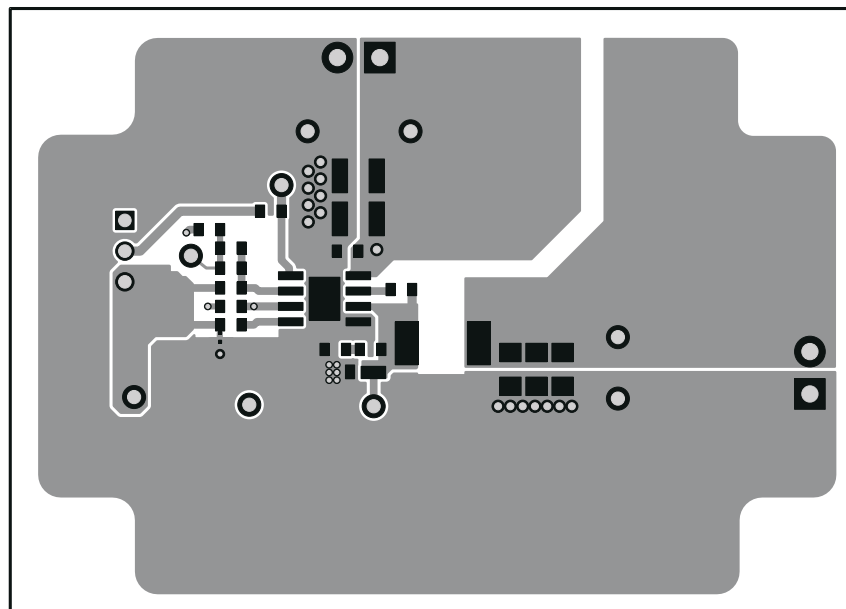


Figure 5-2. Top Layer

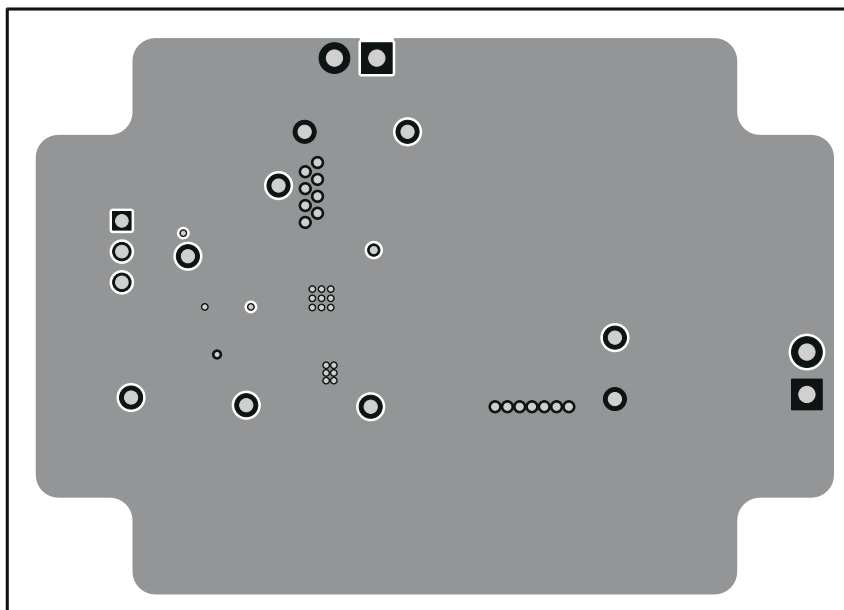


Figure 5-3. Internal Layer 1

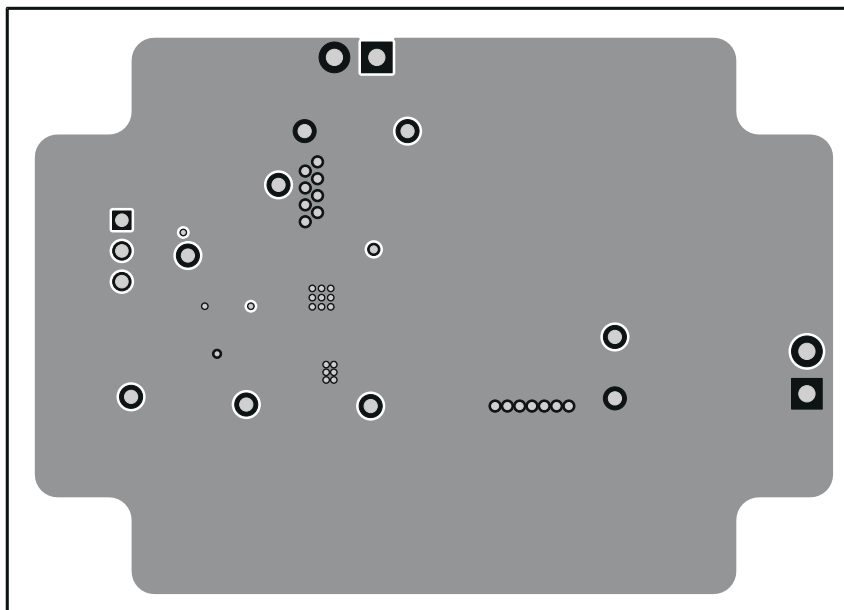


Figure 5-4. Internal Layer 2

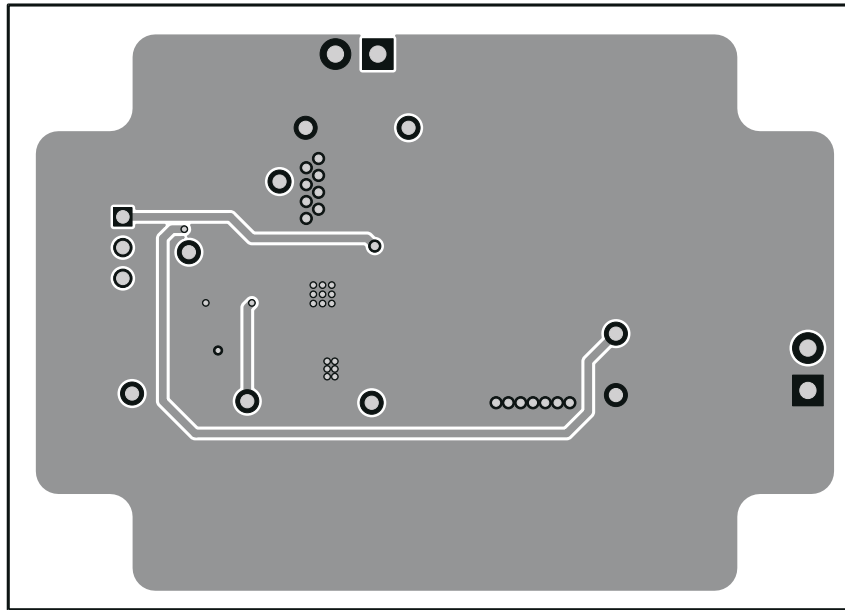


Figure 5-5. Bottom Layer

6 Schematic, Bill of Materials, and Reference

6.1 Schematic

Figure 6-1 is the schematic for the TPS54528EVM-052.

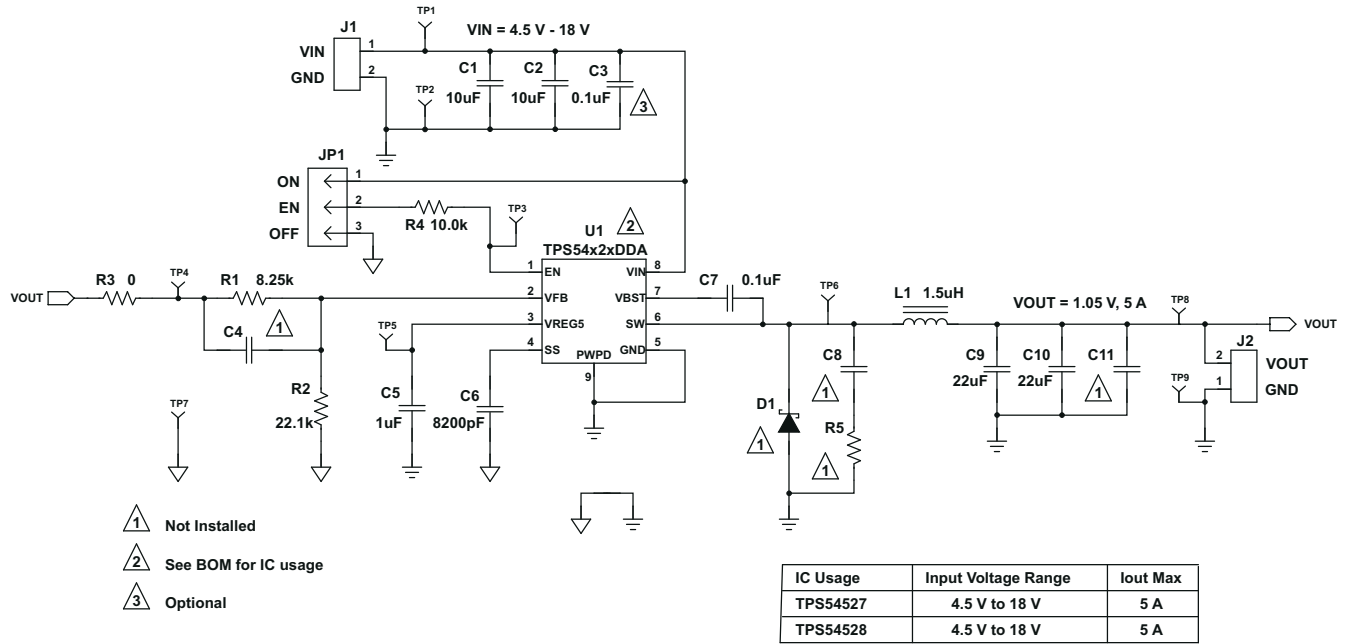


Figure 6-1. TPS54528EVM-052 Schematic Diagram

6.2 Bill of Materials

Table 6-1. Bill of Materials

| RefDes | Qty | Value | Description | Size | Part Number | MFR |
|------------------------------------|-----|-------------|--|--------------------|------------------|----------|
| C1, C2 | 2 | 10uF | Capacitor, Ceramic, 25V, X5R, 20% | 1210 | Std | Std |
| C11 | 0 | Open | Capacitor, Ceramic | 1206 | Std | Std |
| C3, C7 | 2 | 0.1uF | Capacitor, Ceramic, 50V, X7R, 10% | 0603 | Std | Std |
| C4, C8 | 1 | Open | Capacitor, Ceramic | 0603 | Std | Std |
| C5 | 1 | 1.0uF | Capacitor, Ceramic, 16V, X7R, 10% | 0603 | Std | Std |
| C6 | 1 | 8200pF | Capacitor, Ceramic, 25V, X7R, 10% | 0603 | Std | Std |
| C9, C10 | 2 | 22uF | Capacitor, Ceramic, 6.3V, X5R, 20% | 1206 | C3216X5R0J226M | TDK |
| J1, J2 | 2 | ED555/2DS | Terminal Block, 2-pin, 6-A, 3.5mm | 0.27 x 0.25 inch | ED555/2DS | Sullins |
| JP1 | 1 | PEC03SAAN | Header, Male 3-pin, 100mil spacing | 0.100 inch x 3 | PEC03SAAN | Sullins |
| L1 | 1 | 1.5uH | Inductor, SMT, 11 A, 9.7 mΩ | 0.256 x 0.280 inch | SPM6530T-1R5M100 | TDK |
| R1 | 1 | 8.25k | Resistor, Chip, 1/16W, 1% | 0603 | Std | Std |
| R2 | 1 | 22.1k | Resistor, Chip, 1/16W, 1% | 0603 | Std | Std |
| R3 | 1 | 0 | Resistor, Chip, 1/16W, 1% | 0603 | Std | Std |
| R4 | 1 | 10.0k | Resistor, Chip, 1/16W, 1% | 0603 | Std | Std |
| R5 | 0 | Open | Resistor, Chip, 1/16W, 1% | 0603 | Std | Std |
| TP1, TP3, TP4, TP5, TP6, TP8 | 3 | 5000 | Test Point, Red, Thru Hole Color Keyed | 0.100 x 0.100 inch | 5000 | Keystone |
| TP2, TP7, TP9 | 3 | 5001 | Test Point, Black, Thru Hole Color Keyed | 0.100 x 0.100 inch | 5001 | Keystone |
| U1 | 1 | TPS54528DDA | IC, 5-A Output Single Sync. Step-Down | SO8[DDA] | TPS54528DDA | TI |
| - | 1 | | Shunt, 100-mil, Black | 0.100 | 929950-00 | 3M |
| - | 1 | | PCB, 2.76 In x 1.97 In x 0.062 In | | PWR052 | Any |

6.3 Reference

1. *TPS54528, 4.5V to 18V Input, 5-A Synchronous Step-Down SWIFT™ Converter With Eco-mode™* data sheet ([SLVSAY4](#))

7 Revision History

NOTE: Page numbers for previous revisions may differ from page numbers in the current version.

| Changes from Revision * (July 2011) to Revision A (August 2021) | Page |
|--|------|
| • Updated the numbering format for tables, figures, and cross-references throughout the document. | 3 |
| • Updated the user's guide title..... | 3 |

IMPORTANT NOTICE AND DISCLAIMER

TI PROVIDES TECHNICAL AND RELIABILITY DATA (INCLUDING DATA SHEETS), DESIGN RESOURCES (INCLUDING REFERENCE DESIGNS), APPLICATION OR OTHER DESIGN ADVICE, WEB TOOLS, SAFETY INFORMATION, AND OTHER RESOURCES "AS IS" AND WITH ALL FAULTS, AND DISCLAIMS ALL WARRANTIES, EXPRESS AND IMPLIED, INCLUDING WITHOUT LIMITATION ANY IMPLIED WARRANTIES OF MERCHANTABILITY, FITNESS FOR A PARTICULAR PURPOSE OR NON-INFRINGEMENT OF THIRD PARTY INTELLECTUAL PROPERTY RIGHTS.

These resources are intended for skilled developers designing with TI products. You are solely responsible for (1) selecting the appropriate TI products for your application, (2) designing, validating and testing your application, and (3) ensuring your application meets applicable standards, and any other safety, security, regulatory or other requirements.

These resources are subject to change without notice. TI grants you permission to use these resources only for development of an application that uses the TI products described in the resource. Other reproduction and display of these resources is prohibited. No license is granted to any other TI intellectual property right or to any third party intellectual property right. TI disclaims responsibility for, and you will fully indemnify TI and its representatives against, any claims, damages, costs, losses, and liabilities arising out of your use of these resources.

TI's products are provided subject to [TI's Terms of Sale](#) or other applicable terms available either on ti.com or provided in conjunction with such TI products. TI's provision of these resources does not expand or otherwise alter TI's applicable warranties or warranty disclaimers for TI products.

TI objects to and rejects any additional or different terms you may have proposed.

Mailing Address: Texas Instruments, Post Office Box 655303, Dallas, Texas 75265
Copyright © 2022, Texas Instruments Incorporated