

TPS562203 and TPS562206 Step-Down Converter Evaluation Module User's Guide



ABSTRACT

TPS56220x evaluation module (EVM) is a simple, easy-to-use, 2-A, synchronous step-down converter in SOT563 package. TPS56220xEVM is a fully assembled and tested circuit for evaluating the TPS56220x step-down converter. This EVM operates from 4.2-V to 17-V input, 12-V nominal, and provides a 1.05-V output at 2 A. The EVM also includes AC signal injection terminals for feedback loop measurements.

Table of Contents

1 Features	2
2 Applications	2
3 Hardware Image	3
4 Evaluation Module Overview	4
4.1 Introduction.....	4
4.2 Kit Contents.....	4
4.3 Reference.....	4
4.4 Device Information.....	4
5 Performance Specification Summary	5
6 Output Voltage Setpoint	5
7 Test Setup and Results	6
7.1 Input, Output Connections.....	6
7.2 Start-Up Procedure.....	7
7.3 Efficiency.....	7
7.4 Load Regulation.....	8
7.5 Line Regulation.....	9
7.6 Load Transient Response.....	10
7.7 Start-Up.....	11
7.8 Shutdown.....	12
7.9 Output Voltage Ripple.....	13
8 Hardware Design Files	15
8.1 Schematic.....	15
8.2 Layout.....	15
8.3 Bill of Materials.....	17
9 Reference	18
10 Revision History	18

List of Figures

Figure 3-1. TPS56220xEVM Board (Top View).....	3
Figure 7-1. TPS562203EVM Connectors and Jumpers Placement.....	6
Figure 7-2. TPS562203EVM Efficiency.....	7
Figure 7-3. TPS562206EVM Efficiency.....	8
Figure 7-4. TPS562203EVM Load Regulation.....	8
Figure 7-5. TPS562206EVM Load Regulation.....	9
Figure 7-6. TPS562203EVM Line Regulation.....	9
Figure 7-7. TPS562206EVM Line Regulation.....	10
Figure 7-8. TPS562203EVM Load Transient Response, 10% to 90% (0.2 A to 1.8 A) Load Step.....	10
Figure 7-9. TPS562206EVM Load Transient Response, 10% to 90% (0.2 A to 1.8 A) Load Step.....	11
Figure 7-10. TPS562203EVM Start-Up Relative to V_{IN}	11
Figure 7-11. TPS562203EVM Start-Up Relative to EN.....	12

Figure 7-12. TPS562203EVM Shutdown Relative to V_{IN}	12
Figure 7-13. TPS562203EVM Shutdown Relative to EN.....	13
Figure 7-14. TPS562203EVM Output Voltage Ripple, $I_{OUT} = 2\text{ A}$	13
Figure 7-15. TPS562203EVM Output Voltage Ripple, $I_{OUT} = 0.01\text{ A}$	14
Figure 7-16. TPS562206EVM Output Voltage Ripple, $I_{OUT} = 0.01\text{ A}$	14
Figure 8-1. TPS562203EVM Schematic Diagram.....	15
Figure 8-2. TPS562203EVM Top Assembly.....	15
Figure 8-3. TPS562203EVM Top Layer.....	16
Figure 8-4. TPS562203EVM Bottom Layer.....	16
Figure 8-5. TPS562203EVM Board (Top View).....	16
Figure 8-6. TPS562203EVM Board (Bottom View).....	17

List of Tables

Table 4-1. Input Voltage and Output Current Summary.....	4
Table 5-1. Performance Specifications Summary.....	5
Table 7-1. Connection and Test Points.....	6
Table 8-1. Bill of Materials.....	17

Trademarks

D-CAP3™ is a trademark of Texas Instruments.

All trademarks are the property of their respective owners.

1 Features

- 4.2-V to 17-V input voltage range
- 0.6-V to 7-V output voltage range
- Up to 2-A output current
- Eco-mode / FCCM mode
- Fast transient response

2 Applications

- [TV](#)
- [Digital set top box \(STB\)](#)
- [Building automation](#)
- [Broadband fixed line access](#)

3 Hardware Image

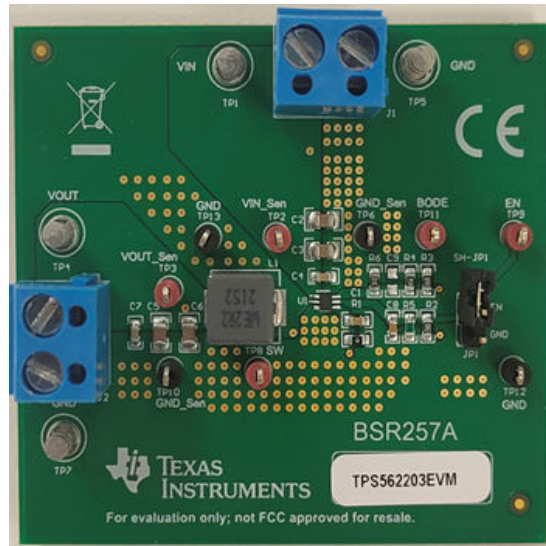


Figure 3-1. TPS56220xEVM Board (Top View)

4 Evaluation Module Overview

This user's guide introduces the TPS562203EVM and TPS562206EVM. These three devices differ in their light load behavior. The TPS562203 operates in Eco-mode, the TPS562206 operates in FCCM mode. This user's guide contains information for the TPS562203 and TPS562206 as well as support documentation for the TPS562203EVM and TPS562206EVM evaluation modules. This document also includes the performance specifications, board layout, schematic, and the list of materials of the TPS562203EVM and TPS562206EVM.

- Performance specifications
- Board layout
- Schematic
- List of materials

4.1 Introduction

In light-load conditions, the TPS562203 operates in Eco-mode to enable higher efficiency by varying switching frequency, the TPS562206 operates in FCCM to maintain constant switching frequency. The main difference is at light loading, but the other behaviors are similar. This user's guide mainly introduces the TPS562203 and includes some TPS562206 features that are different from the TPS562203.

The TPS56220x is a single, adaptive on-time, D-CAP3™ control mode, synchronous buck converter that requires a very low external component count. The D-CAP3 control mode circuit is optimized for low-ESR output capacitors such as POSCAP, SP-CAP, or ceramic types and features fast transient response with no external compensation. The switching frequency is internally set at a nominal 600 kHz. The high-side and low-side switching MOSFETs are incorporated inside the TPS56220x package along with the gate-drive circuitry. The low drain-to-source on resistance of the MOSFETs and fast switching slew rate allow the TPS56220x to achieve high efficiency and help keep the junction temperature low at high output currents. The TPS56220x DC/DC synchronous converter is designed to support up to a 2-A continuous current from an input voltage source of 4.2 V to 17 V. The output voltage range is from 0.6 V to 7 V. Rated input voltage and output current ranges for the evaluation module are given in [Table 4-1](#).

The TPS56220xEVM evaluation module (EVM) is a single, synchronous buck converter providing 1.05 V at 2 A from 4.2-V to 17-V input. This user's guide describes the TPS56220xEVM performance.

Table 4-1. Input Voltage and Output Current Summary

EVM	INPUT VOLTAGE (V_{IN}) RANGE	OUTPUT CURRENT (I_{OUT}) RANGE
TPS562203EVM	$V_{IN} = 4.2 \text{ V to } 17 \text{ V}$	0 A to 2 A
TPS562206EVM	$V_{IN} = 4.2 \text{ V to } 17 \text{ V}$	0 A to 2 A

4.2 Kit Contents

- One TPS56220XEVM board
- EVM disclaimer Read Me

4.3 Reference

This EVM operates from 4.2-V to 17-V input, 12-V nominal, and provides a 1.05-V output at 2 A. The EVM also includes AC signal injection terminals for feedback loop measurements. Specification, application information, and schematic are shown in [Test Setup and Results](#) and [Schematic](#).

4.4 Device Information

Synchronous buck converter TPS56220X is used in the EVM to achieve the high-efficiency power delivery and voltage conversion. The TPS562203 operates in Eco-mode, which maintains high efficiency during light loading. The TPS562206 operates in FCCM mode, which keeps the same frequency and lower output ripple during all load conditions.

Device Information

PART NUMBER	Mode	Package
TPS562203	ECO	DRL (SOT-563, 6)
TPS562206	FCCM	

5 Performance Specification Summary

Table 5-1 provides a summary of the TPS562203EVM performance specifications. Specifications are given for an input voltage of $V_{IN} = 12\text{ V}$ and an output voltage of 1.05 V , unless otherwise noted. The ambient temperature is 25°C for all measurement, unless otherwise noted.

Table 5-1. Performance Specifications Summary

SPECIFICATIONS	TEST CONDITIONS	MIN	TYP	MAX	UNIT
Input voltage range		4.2	12	17	V
Output voltage set point			1.05		V
Operating frequency	$V_{IN} = 12\text{ V}, I_O = 2\text{ A}$		600		KHz
Output current range		0		2	A
Over current limit	$V_{IN} = 12\text{ V}, L_O = 2.2\ \mu\text{H}$		3.8		A
Output ripple voltage	$V_{IN} = 12\text{ V}, I_O = 2\text{ A}$		6.4		mV _{PP}

6 Output Voltage Setpoint

The output voltage of the EVM can be selected by changing the value of resistor R_4 (R_{UPPER}) and R_6 (R_{LOWER}). The value of R_4 for a specific output voltage can be calculated using Equation 1. The output voltage is set with a resistor divider from the output node to the FB pin. TI recommends using 1% tolerance or better divider resistors. Start with a $10\text{ k}\Omega$ or $30\text{ k}\Omega$ for R_6 (R_{FBB}) and use Equation 1 to calculate R_4 (R_{FBT}). To improve efficiency at light loads, consider using larger value resistors. If the values are too high, the regulator is more susceptible to noise and voltage errors from the FB input current are noticeable.

$$V_{OUT} = 0.6 \times \left(1 + \frac{R_4}{R_6}\right) \quad (1)$$

7 Test Setup and Results

This section describes how to properly connect, set up, and use the TPS562203EVM. The section also includes test results typical for the evaluation modules and the following:

- Efficiency
- Output load regulation
- Output line regulation
- Load transient response
- Output voltage ripple
- Start-up
- Shutdown

7.1 Input, Output Connections

The TPS562203EVM is provided with input, output connectors and test points as shown in Table 7-1. Figure 7-1 shows connectors and jumpers placement on TPS562203EVM board.

A power supply capable of supplying 2 A must be connected to J1 through a pair of 20-AWG wires. The load must be connected to J2 through a pair of 20-AWG wires. The maximum load current capability is 2 A. Wire lengths must be minimized to reduce losses in the wires. Test point TP2 provides a place to monitor the V_{IN} input voltages with TP6 providing a convenient ground reference. TP3 is used to monitor the output voltage with TP10 as the ground reference.

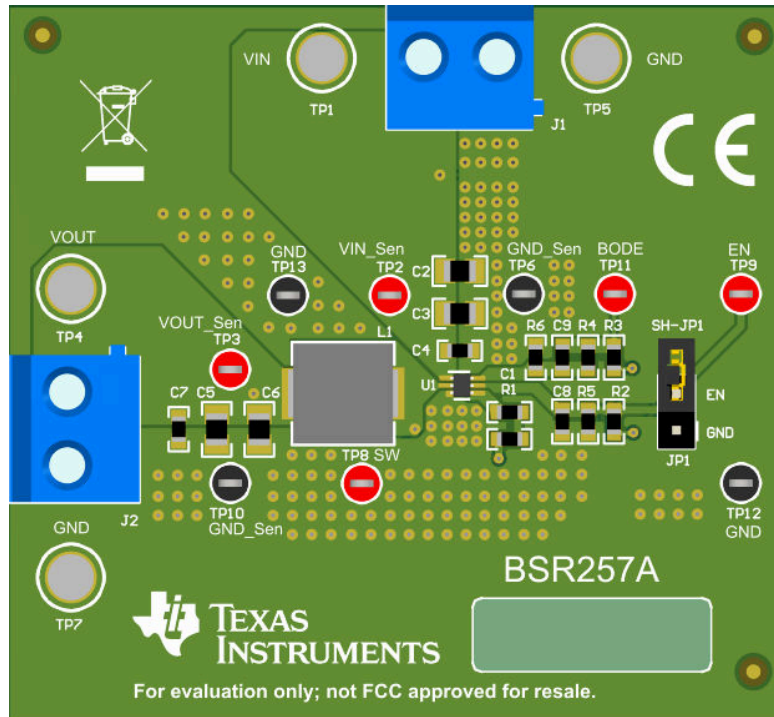


Figure 7-1. TPS562203EVM Connectors and Jumpers Placement

Table 7-1. Connection and Test Points

REFERENCE DESIGNATOR	FUNCTION
J1	V_{IN} (see Table 4-1 for V_{IN} range)
J2	V_{OUT} , 1.05 V at 2-A maximum
JP1	EN control. Shunt EN to GND to disable
TP1	V_{IN} positive power point
TP2	V_{IN} positive monitor point
TP3	V_{OUT} positive monitor point
TP4	V_{OUT} positive power point

Table 7-1. Connection and Test Points (continued)

REFERENCE DESIGNATOR	FUNCTION
TP5, TP7	GND power point
TP6, TP10, TP12, TP13	GND monitor point
TP8	Switch node test point
TP9	EN test point
TP11	Test point for loop response measurements

7.2 Start-Up Procedure

1. Make sure that the jumper at JP1 (Enable control) pins 1 and 2 are covered to shunt EN to GND, disabling the output.
2. Apply appropriate input voltage to VIN (J1-2) and GND (J1-1).
3. Move the jumper at J1 (Enable control) pin 2 and 1 (EN and GND) to enable the output.

7.3 Efficiency

Figure 7-2 shows the efficiency for the TPS562203EVM at an ambient temperature of 25°C. Figure 7-3 shows the efficiency for the TPS562206EVM at an ambient temperature of 25°C.

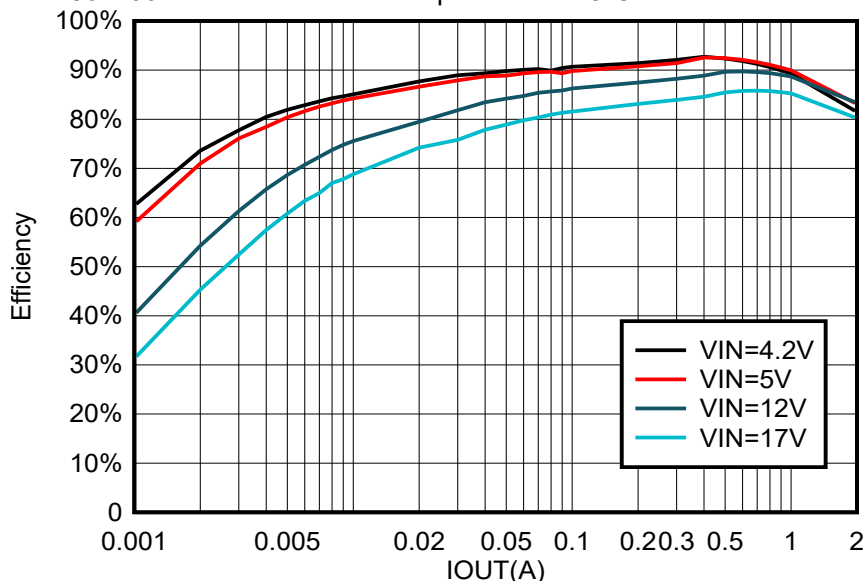


Figure 7-2. TPS562203EVM Efficiency

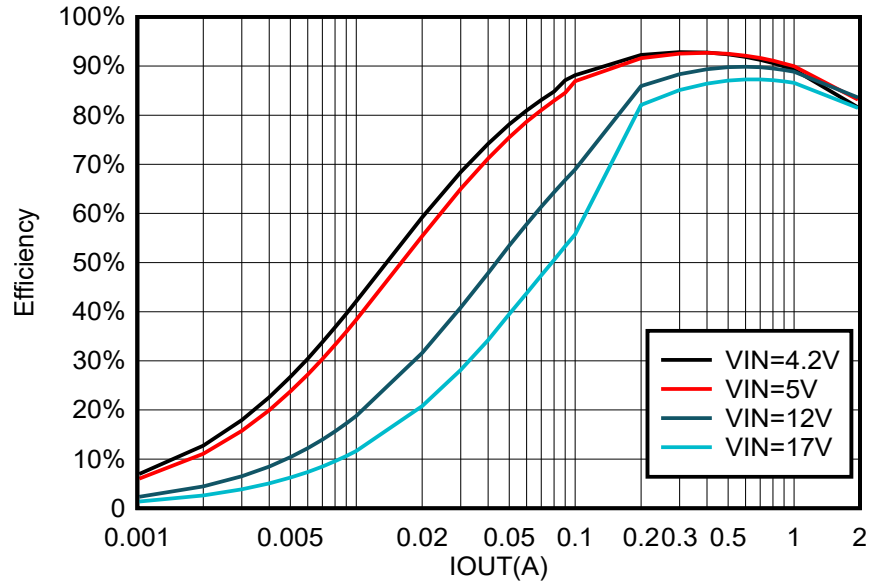


Figure 7-3. TPS562206EVM Efficiency

7.4 Load Regulation

Figure 7-4 shows load regulation for the TPS562203EVM. Figure 7-5 shows load regulation for the TPS562206EVM.

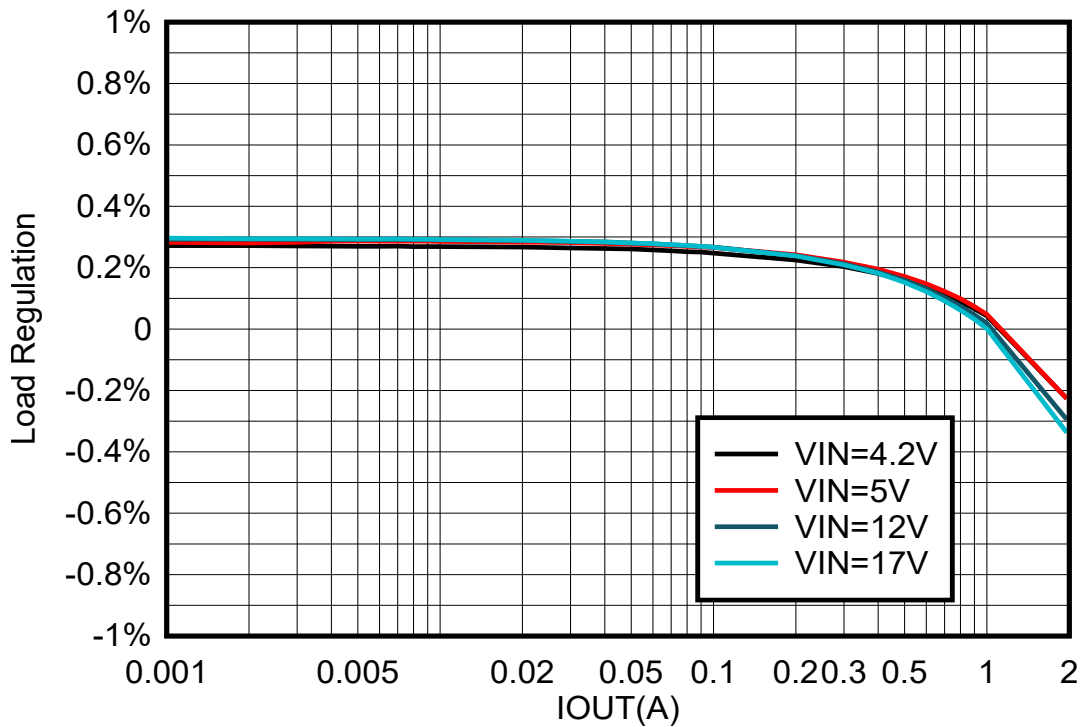


Figure 7-4. TPS562203EVM Load Regulation

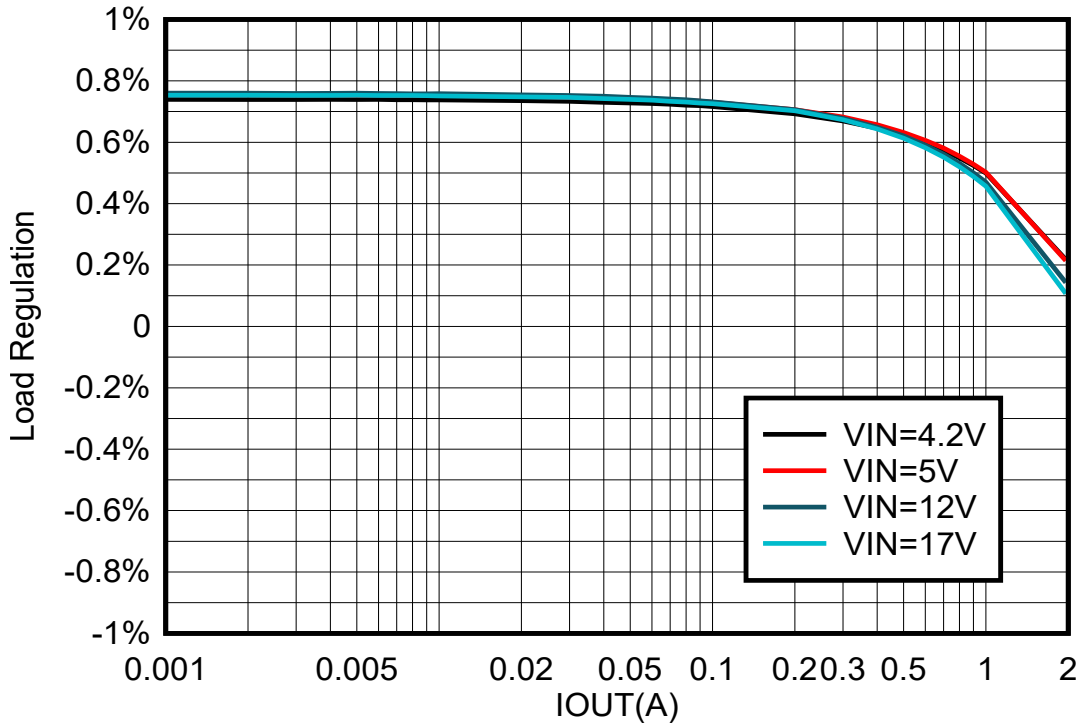


Figure 7-5. TPS562206EVM Load Regulation

7.5 Line Regulation

Figure 7-6 shows line regulation for the TPS562203EVM. Figure 7-7 shows line regulation for the TPS562206EVM.

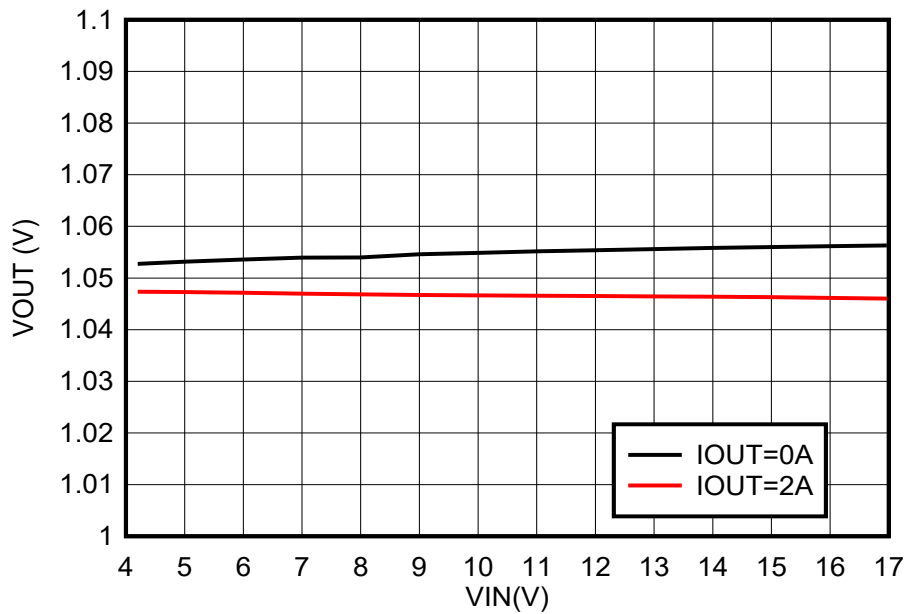


Figure 7-6. TPS562203EVM Line Regulation

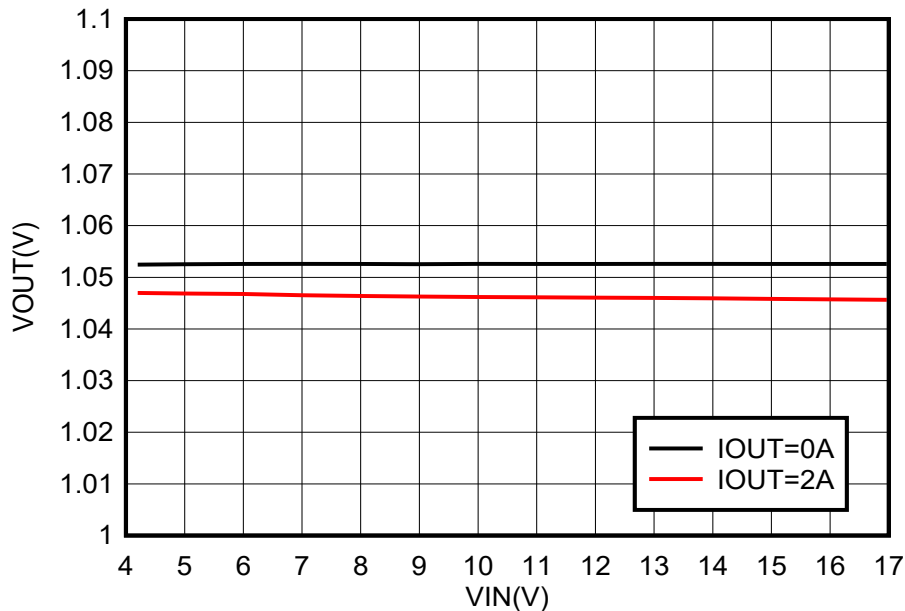


Figure 7-7. TPS562206EVM Line Regulation

7.6 Load Transient Response

Figure 7-8 shows the response to load transient for the TPS562203EVM. Figure 7-9 shows the response to load transient for the TPS562206EVM. The current steps slew rate is set as 2.5 A/ μ s.

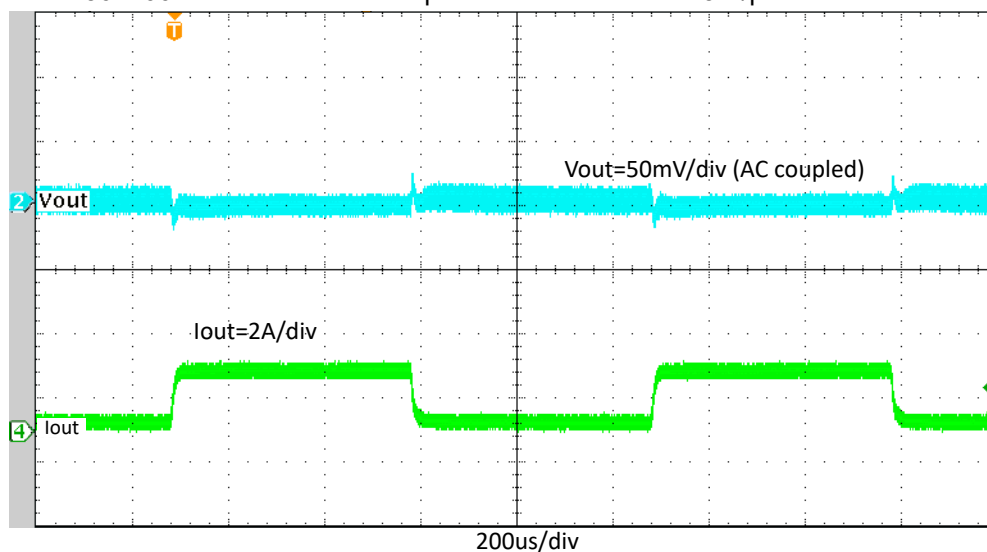


Figure 7-8. TPS562203EVM Load Transient Response, 10% to 90% (0.2 A to 1.8 A) Load Step

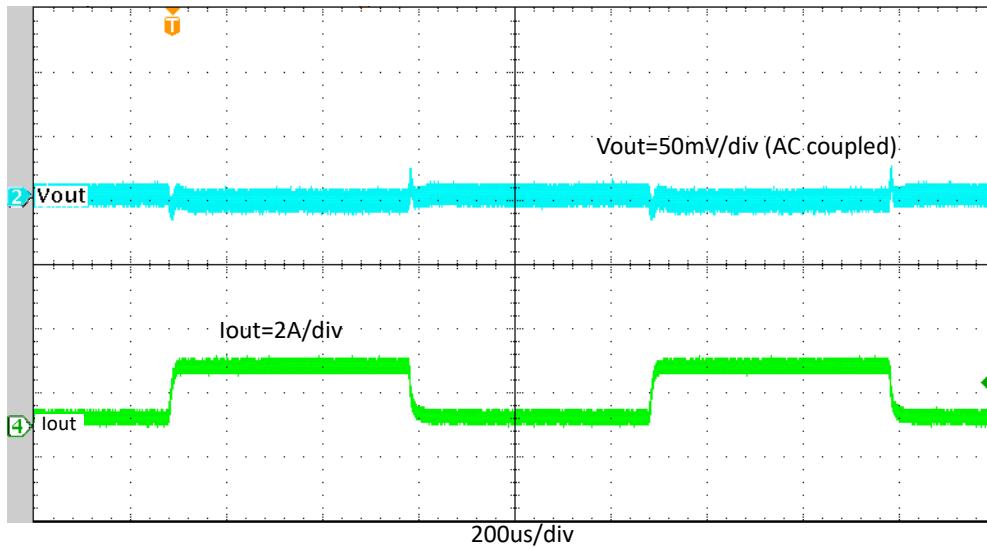


Figure 7-9. TPS562206EVM Load Transient Response, 10% to 90% (0.2 A to 1.8 A) Load Step

7.7 Start-Up

Figure 7-10 shows the TPS562203EVM start-up waveform relative to V_{IN} . The load is 2 A.

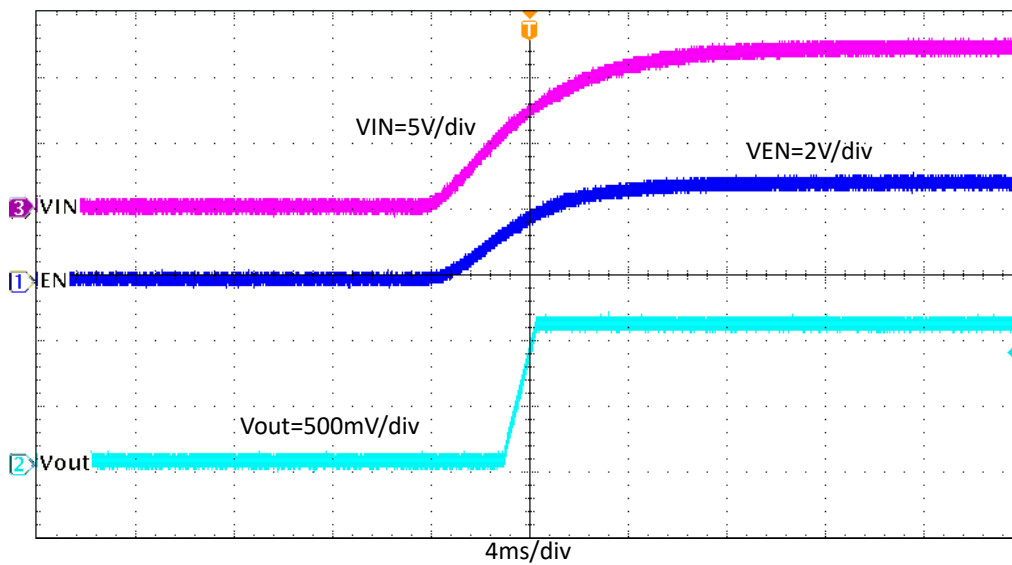


Figure 7-10. TPS562203EVM Start-Up Relative to V_{IN}

Figure 7-11 shows the TPS562203EVM start-up waveform relative to enable (EN). The load is 2 A.

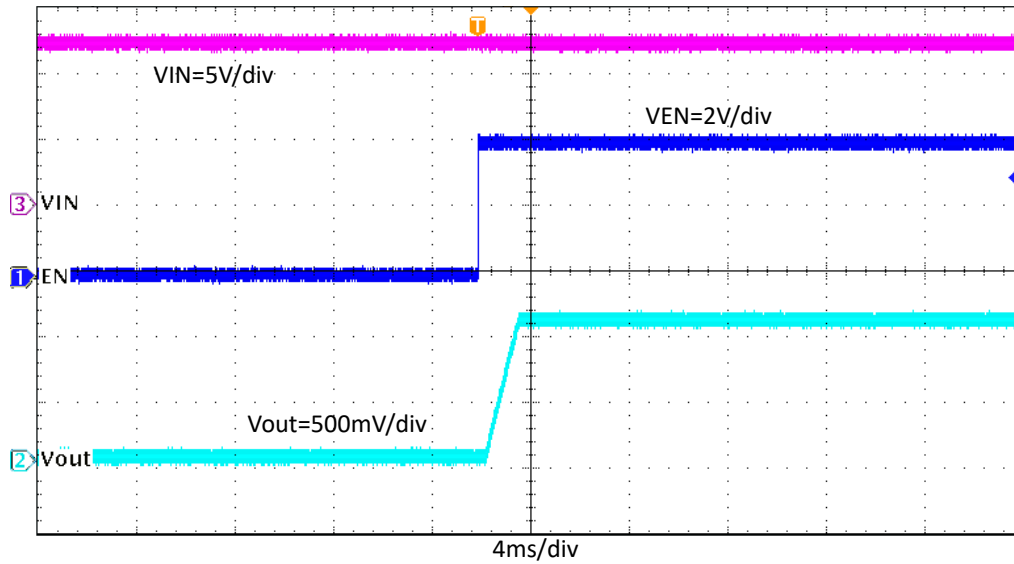


Figure 7-11. TPS562203EVM Start-Up Relative to EN

7.8 Shutdown

Figure 7-12 shows the TPS562203EVM shut-up waveform relative to V_{IN} . The load is 2 A.

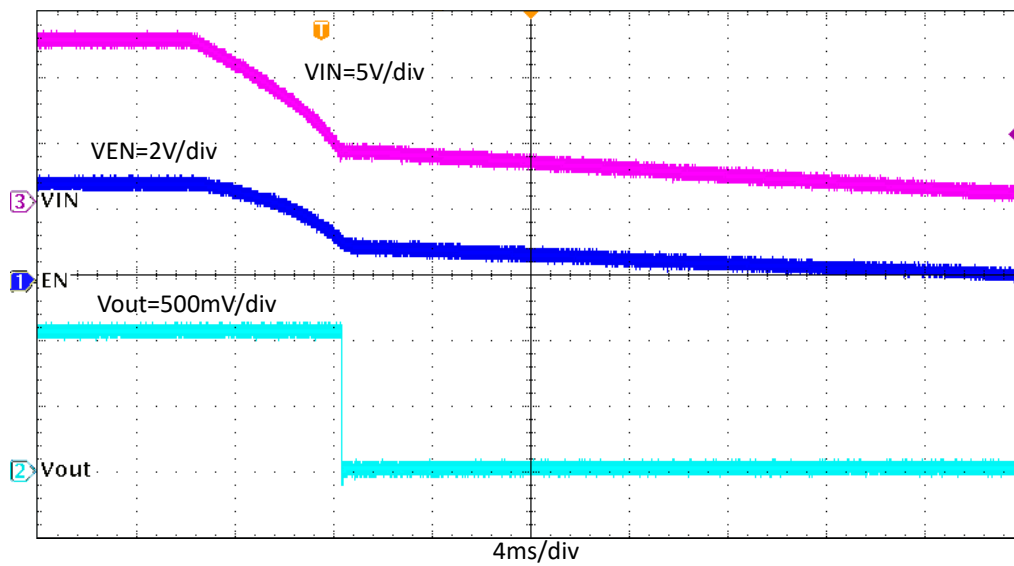


Figure 7-12. TPS562203EVM Shutdown Relative to V_{IN}

Figure 7-13 shows the TPS562203EVM shut-up waveform relative to enable (EN). The load is 2 A.

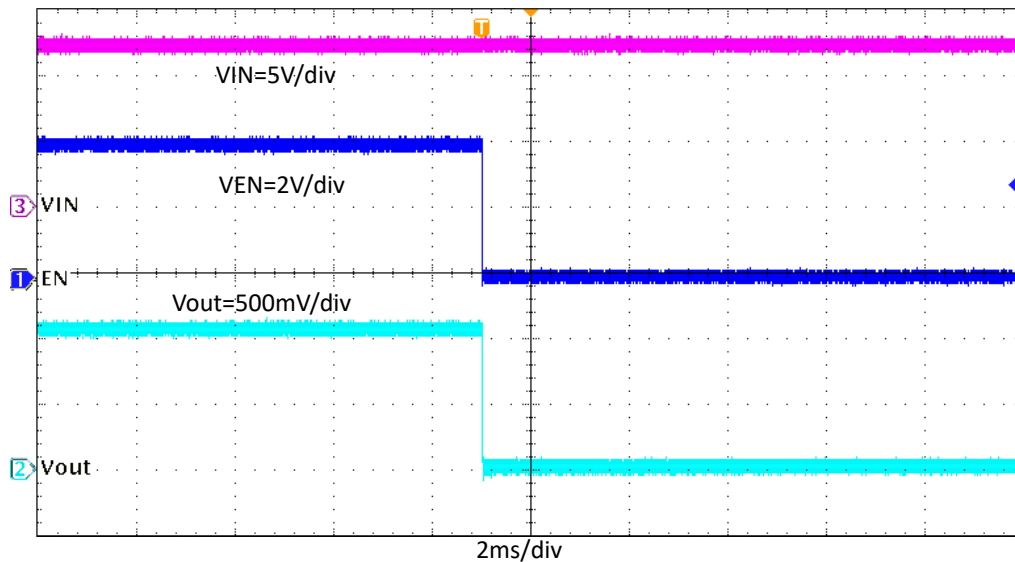


Figure 7-13. TPS562203EVM Shutdown Relative to EN

7.9 Output Voltage Ripple

Figure 7-14 and Figure 7-15 show the TPS562203EVM output voltage ripple. Figure 7-16 shows the TPS562206EVM output voltage ripple. The output currents are as indicated.

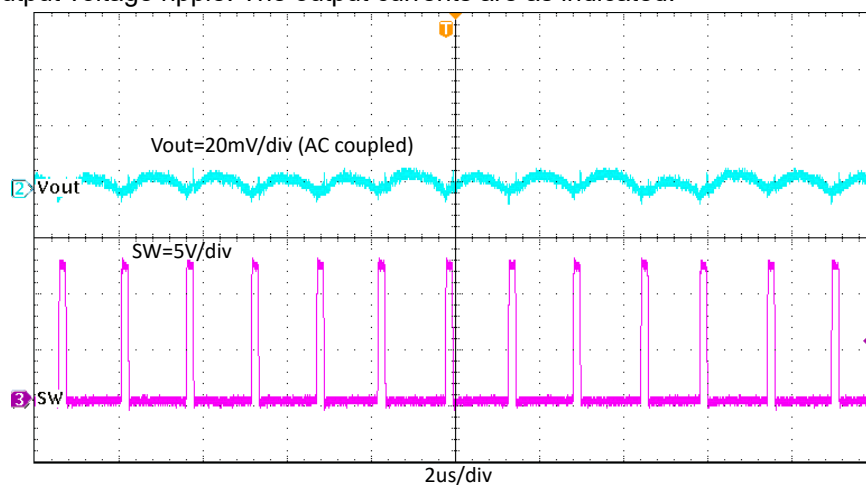


Figure 7-14. TPS562203EVM Output Voltage Ripple, $I_{OUT} = 2\text{ A}$

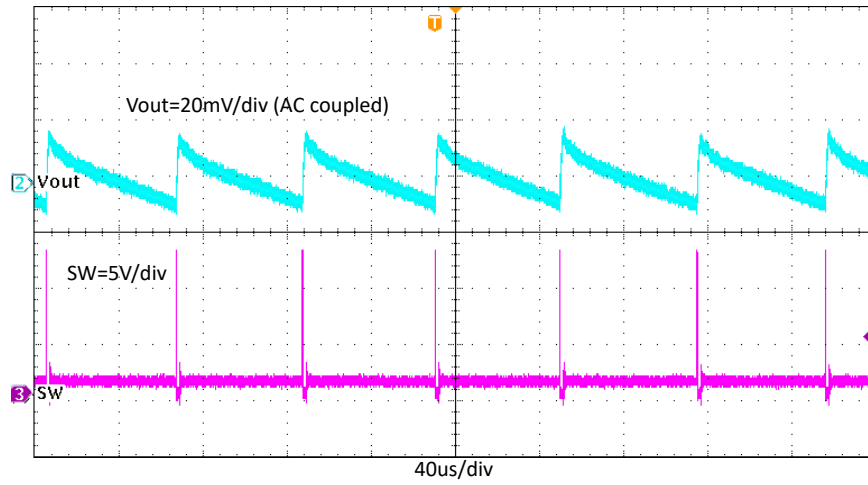


Figure 7-15. TPS562203EVM Output Voltage Ripple, $I_{OUT} = 0.01$ A

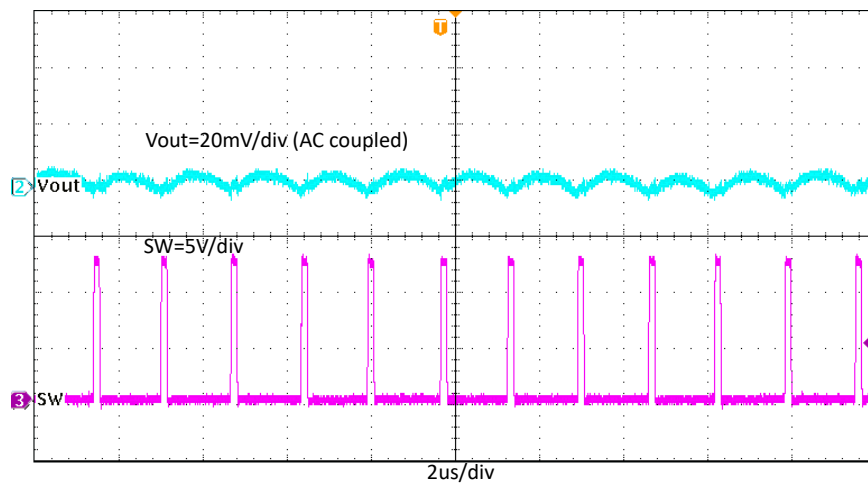


Figure 7-16. TPS562206EVM Output Voltage Ripple, $I_{OUT} = 0.01$ A

8 Hardware Design Files

8.1 Schematic

The following figure is the schematic for the TPS562203EVM.

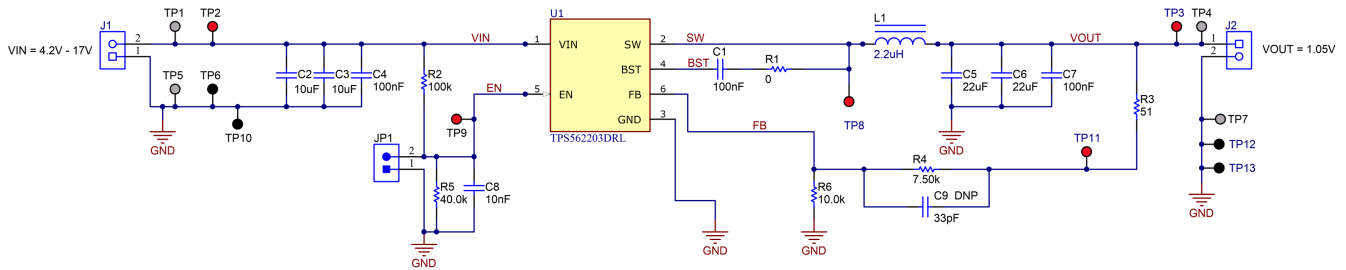


Figure 8-1. TPS562203EVM Schematic Diagram

8.2 Layout

Figure 8-2, Figure 8-3, and Figure 8-4 show the board layout for the TPS562203EVM. The top layer contains the main power traces for VIN, VOUT, and ground. Connections for the pins of the TPS562203 and a large area filled with ground are also on the top layer. Most of the signal traces are also located on the top side. The input decoupling capacitors C2, C3, and C4 are located as close to the IC as possible. The input and output connectors, test points, and all of the components are located on the top side. The bottom layer is a ground plane along with the signal ground copper fill and the feedback trace from the point of regulation to the top of the resistor divider network. Both the top layer and bottom layer use 2-oz copper thickness.

Figure 8-5 and Figure 8-6 are the TPS562203EVM board top view and bottom view, respectively.

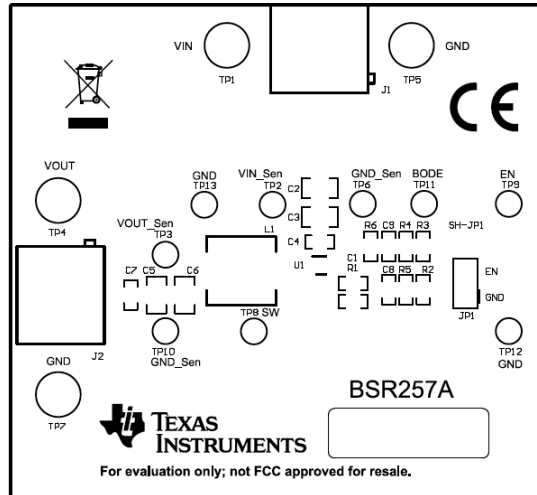


Figure 8-2. TPS562203EVM Top Assembly

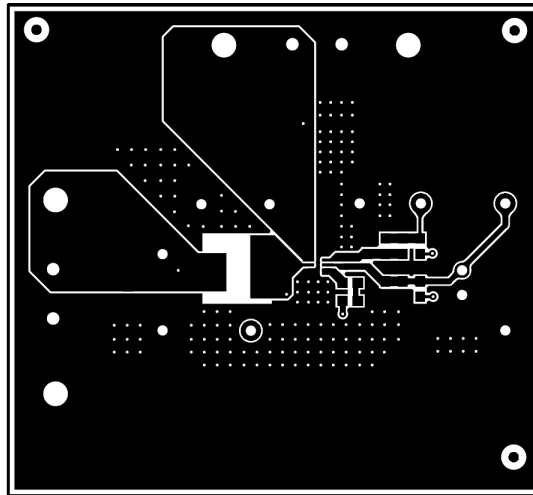


Figure 8-3. TPS562203EVM Top Layer

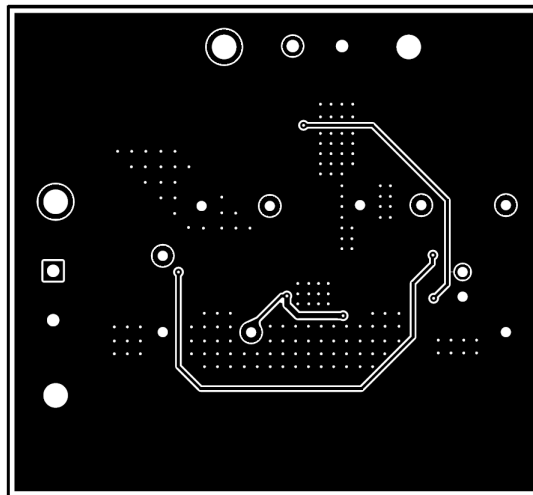


Figure 8-4. TPS562203EVM Bottom Layer



Figure 8-5. TPS562203EVM Board (Top View)

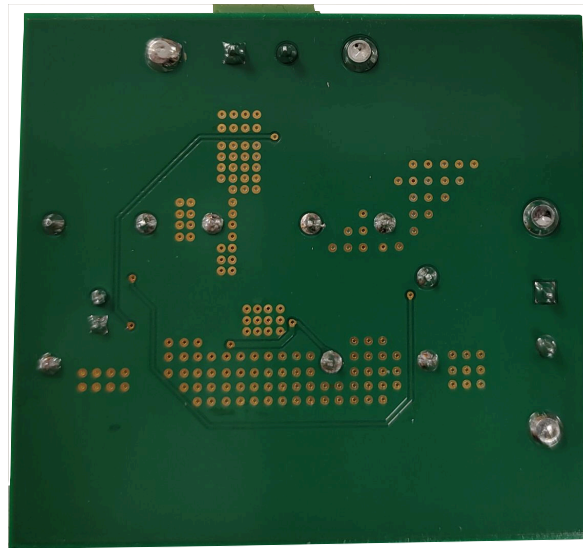


Figure 8-6. TPS562203EVM Board (Bottom View)

8.3 Bill of Materials

Table 8-1. Bill of Materials

Des	Qty	Description	Part Number	Manufacturer
!PCB1	1	Printed Circuit Board	BSR257A	Any
C2, C3	2	Capacitor, ceramic, 10 μ F, 25 V, \pm 20%, X5R, 0805	GRM21BR61E106MA73L	MuRata
C1, C4, C7	3	Capacitor, ceramic, 0.1 μ F, 25 V, \pm 10%, X7R, 0603	C1608X7R1E104K080AA	TDK
C5, C6	1	Capacitor, ceramic, 22 μ F, 10 V, \pm 20%, X5R, 0805	GRM21BR61A226ME44L	MuRata
C8	1	Capacitor, ceramic, 0.01 μ F, 50 V, \pm 10%, X7R, 0603	C1608X7R1H103K080AA	TDK
J1, J2	2	Terminal block, 5.08 mm, 2 \times 1, Brass, TH	ED120/2DS	On-Shore Technology
JP1	1	Header, 100 mil, 2 \times 1, Tin, TH	PEC02SAAN	Sullins Connector Solutions
L1	1	Shielded Molded Inductor 2.2 μ H, 7.5 A 12 m Ω	74437349022	Würth Elektronik
LBL1	1	Thermal transfer printable labels, 0.650" W \times 0.200" H – 10,000 per roll	THT-14-423-10	Brady
R1	1	Resistor, 0 Ω , 5%, 0.1 W, AEC-Q200 Grade 0, 0603	CRCW06030000Z0EA	Vishay-Dale
R2	1	Resistor, 100 k Ω , 5%, 0.1 W, 0603	CRCW0603100KJNEA	Vishay-Dale
R3	1	Resistor, 51 Ω , 5%, 0.1 W, AEC-Q200 Grade 0, 0603	CRCW060351R0JNEA	Vishay-Dale
R4	1	Resistor, 7.5 k Ω , 1%, 0.1 W, 0603	RC0603FR-077K5L	Yageo
R5	1	Resistor, 40.0 k Ω , 0.1%, 0.15 W, AEC-Q200 Grade 0, 0603	PAT0603E4002BST1	Vishay Thin Film
R6	1	Resistor, 10.0 k Ω , 1%, 0.1 W, AEC-Q200 Grade 0, 0603	CRCW060310K0FKEA	Vishay-Dale
SH-JP1	1	Shunt, 100 mil, gold plated, black	SNT-100-BK-G	Samtec
TP1, TP4, TP5, TP7	4	Terminal, turret, TH, double	1502-2	Keystone
TP2, TP3, TP8, TP9, TP11	5	Test point, miniature, red, TH	5000	Keystone

Table 8-1. Bill of Materials (continued)

Des	Qty	Description	Part Number	Manufacturer
TP6, TP10, TP12, TP13	4	Test point, miniature, black, TH	5001	Keystone
U1	1	4.2-V to 17-V Input, 2-A Synchronous Buck Converter, DRL0006A (SOT-5X3-6)	TPS562203DRLR	Texas Instruments

9 Reference

1. Texas Instruments, [TPS56220x 4.2-V to 17-V Input, 2-A, Synchronous Buck Converter in SOT563](#) data sheet.

10 Revision History

NOTE: Page numbers for previous revisions may differ from page numbers in the current version.

Changes from Revision * (August 2023) to Revision A (August 2023)	Page
• Removed 6VIN efficiency curve and added 5VIN efficiency curve.....	7
• Removed 6VIN regulation curve and added 5VIN regulation curve.....	8

STANDARD TERMS FOR EVALUATION MODULES

1. *Delivery:* TI delivers TI evaluation boards, kits, or modules, including any accompanying demonstration software, components, and/or documentation which may be provided together or separately (collectively, an "EVM" or "EVMs") to the User ("User") in accordance with the terms set forth herein. User's acceptance of the EVM is expressly subject to the following terms.
 - 1.1 EVMs are intended solely for product or software developers for use in a research and development setting to facilitate feasibility evaluation, experimentation, or scientific analysis of TI semiconductors products. EVMs have no direct function and are not finished products. EVMs shall not be directly or indirectly assembled as a part or subassembly in any finished product. For clarification, any software or software tools provided with the EVM ("Software") shall not be subject to the terms and conditions set forth herein but rather shall be subject to the applicable terms that accompany such Software
 - 1.2 EVMs are not intended for consumer or household use. EVMs may not be sold, sublicensed, leased, rented, loaned, assigned, or otherwise distributed for commercial purposes by Users, in whole or in part, or used in any finished product or production system.
2. *Limited Warranty and Related Remedies/Disclaimers:*
 - 2.1 These terms do not apply to Software. The warranty, if any, for Software is covered in the applicable Software License Agreement.
 - 2.2 TI warrants that the TI EVM will conform to TI's published specifications for ninety (90) days after the date TI delivers such EVM to User. Notwithstanding the foregoing, TI shall not be liable for a nonconforming EVM if (a) the nonconformity was caused by neglect, misuse or mistreatment by an entity other than TI, including improper installation or testing, or for any EVMs that have been altered or modified in any way by an entity other than TI, (b) the nonconformity resulted from User's design, specifications or instructions for such EVMs or improper system design, or (c) User has not paid on time. Testing and other quality control techniques are used to the extent TI deems necessary. TI does not test all parameters of each EVM. User's claims against TI under this Section 2 are void if User fails to notify TI of any apparent defects in the EVMs within ten (10) business days after delivery, or of any hidden defects with ten (10) business days after the defect has been detected.
 - 2.3 TI's sole liability shall be at its option to repair or replace EVMs that fail to conform to the warranty set forth above, or credit User's account for such EVM. TI's liability under this warranty shall be limited to EVMs that are returned during the warranty period to the address designated by TI and that are determined by TI not to conform to such warranty. If TI elects to repair or replace such EVM, TI shall have a reasonable time to repair such EVM or provide replacements. Repaired EVMs shall be warranted for the remainder of the original warranty period. Replaced EVMs shall be warranted for a new full ninety (90) day warranty period.

WARNING

Evaluation Kits are intended solely for use by technically qualified, professional electronics experts who are familiar with the dangers and application risks associated with handling electrical mechanical components, systems, and subsystems.

User shall operate the Evaluation Kit within TI's recommended guidelines and any applicable legal or environmental requirements as well as reasonable and customary safeguards. Failure to set up and/or operate the Evaluation Kit within TI's recommended guidelines may result in personal injury or death or property damage. Proper set up entails following TI's instructions for electrical ratings of interface circuits such as input, output and electrical loads.

NOTE:

EXPOSURE TO ELECTROSTATIC DISCHARGE (ESD) MAY CAUSE DEGRADATION OR FAILURE OF THE EVALUATION KIT; TI RECOMMENDS STORAGE OF THE EVALUATION KIT IN A PROTECTIVE ESD BAG.

3 Regulatory Notices:

3.1 United States

3.1.1 Notice applicable to EVMs not FCC-Approved:

FCC NOTICE: This kit is designed to allow product developers to evaluate electronic components, circuitry, or software associated with the kit to determine whether to incorporate such items in a finished product and software developers to write software applications for use with the end product. This kit is not a finished product and when assembled may not be resold or otherwise marketed unless all required FCC equipment authorizations are first obtained. Operation is subject to the condition that this product not cause harmful interference to licensed radio stations and that this product accept harmful interference. Unless the assembled kit is designed to operate under part 15, part 18 or part 95 of this chapter, the operator of the kit must operate under the authority of an FCC license holder or must secure an experimental authorization under part 5 of this chapter.

3.1.2 For EVMs annotated as FCC – FEDERAL COMMUNICATIONS COMMISSION Part 15 Compliant:

CAUTION

This device complies with part 15 of the FCC Rules. Operation is subject to the following two conditions: (1) This device may not cause harmful interference, and (2) this device must accept any interference received, including interference that may cause undesired operation.

Changes or modifications not expressly approved by the party responsible for compliance could void the user's authority to operate the equipment.

FCC Interference Statement for Class A EVM devices

NOTE: This equipment has been tested and found to comply with the limits for a Class A digital device, pursuant to part 15 of the FCC Rules. These limits are designed to provide reasonable protection against harmful interference when the equipment is operated in a commercial environment. This equipment generates, uses, and can radiate radio frequency energy and, if not installed and used in accordance with the instruction manual, may cause harmful interference to radio communications. Operation of this equipment in a residential area is likely to cause harmful interference in which case the user will be required to correct the interference at his own expense.

FCC Interference Statement for Class B EVM devices

NOTE: This equipment has been tested and found to comply with the limits for a Class B digital device, pursuant to part 15 of the FCC Rules. These limits are designed to provide reasonable protection against harmful interference in a residential installation. This equipment generates, uses and can radiate radio frequency energy and, if not installed and used in accordance with the instructions, may cause harmful interference to radio communications. However, there is no guarantee that interference will not occur in a particular installation. If this equipment does cause harmful interference to radio or television reception, which can be determined by turning the equipment off and on, the user is encouraged to try to correct the interference by one or more of the following measures:

- Reorient or relocate the receiving antenna.
- Increase the separation between the equipment and receiver.
- Connect the equipment into an outlet on a circuit different from that to which the receiver is connected.
- Consult the dealer or an experienced radio/TV technician for help.

3.2 Canada

3.2.1 For EVMs issued with an Industry Canada Certificate of Conformance to RSS-210 or RSS-247

Concerning EVMs Including Radio Transmitters:

This device complies with Industry Canada license-exempt RSSs. Operation is subject to the following two conditions:

(1) this device may not cause interference, and (2) this device must accept any interference, including interference that may cause undesired operation of the device.

Concernant les EVMs avec appareils radio:

Le présent appareil est conforme aux CNR d'Industrie Canada applicables aux appareils radio exempts de licence. L'exploitation est autorisée aux deux conditions suivantes: (1) l'appareil ne doit pas produire de brouillage, et (2) l'utilisateur de l'appareil doit accepter tout brouillage radioélectrique subi, même si le brouillage est susceptible d'en compromettre le fonctionnement.

Concerning EVMs Including Detachable Antennas:

Under Industry Canada regulations, this radio transmitter may only operate using an antenna of a type and maximum (or lesser) gain approved for the transmitter by Industry Canada. To reduce potential radio interference to other users, the antenna type and its gain should be so chosen that the equivalent isotropically radiated power (e.i.r.p.) is not more than that necessary for successful communication. This radio transmitter has been approved by Industry Canada to operate with the antenna types listed in the user guide with the maximum permissible gain and required antenna impedance for each antenna type indicated. Antenna types not included in this list, having a gain greater than the maximum gain indicated for that type, are strictly prohibited for use with this device.

Concernant les EVMs avec antennes détachables

Conformément à la réglementation d'Industrie Canada, le présent émetteur radio peut fonctionner avec une antenne d'un type et d'un gain maximal (ou inférieur) approuvé pour l'émetteur par Industrie Canada. Dans le but de réduire les risques de brouillage radioélectrique à l'intention des autres utilisateurs, il faut choisir le type d'antenne et son gain de sorte que la puissance isotrope rayonnée équivalente (p.i.r.e.) ne dépasse pas l'intensité nécessaire à l'établissement d'une communication satisfaisante. Le présent émetteur radio a été approuvé par Industrie Canada pour fonctionner avec les types d'antenne énumérés dans le manuel d'usage et ayant un gain admissible maximal et l'impédance requise pour chaque type d'antenne. Les types d'antenne non inclus dans cette liste, ou dont le gain est supérieur au gain maximal indiqué, sont strictement interdits pour l'exploitation de l'émetteur.

3.3 Japan

3.3.1 *Notice for EVMs delivered in Japan:* Please see http://www.tij.co.jp/lstds/ti_ja/general/eStore/notice_01.page 日本国内に輸入される評価用キット、ボードについては、次のところをご覧ください。

<https://www.ti.com/ja-jp/legal/notice-for-evaluation-kits-delivered-in-japan.html>

3.3.2 *Notice for Users of EVMs Considered "Radio Frequency Products" in Japan:* EVMs entering Japan may not be certified by TI as conforming to Technical Regulations of Radio Law of Japan.

If User uses EVMs in Japan, not certified to Technical Regulations of Radio Law of Japan, User is required to follow the instructions set forth by Radio Law of Japan, which includes, but is not limited to, the instructions below with respect to EVMs (which for the avoidance of doubt are stated strictly for convenience and should be verified by User):

1. Use EVMs in a shielded room or any other test facility as defined in the notification #173 issued by Ministry of Internal Affairs and Communications on March 28, 2006, based on Sub-section 1.1 of Article 6 of the Ministry's Rule for Enforcement of Radio Law of Japan,
2. Use EVMs only after User obtains the license of Test Radio Station as provided in Radio Law of Japan with respect to EVMs, or
3. Use of EVMs only after User obtains the Technical Regulations Conformity Certification as provided in Radio Law of Japan with respect to EVMs. Also, do not transfer EVMs, unless User gives the same notice above to the transferee. Please note that if User does not follow the instructions above, User will be subject to penalties of Radio Law of Japan.

【無線電波を送信する製品の開発キットをお使いになる際の注意事項】 開発キットの中には技術基準適合証明を受けていないものがあります。技術適合証明を受けていないものご使用に際しては、電波法遵守のため、以下のいずれかの措置を取っていただく必要がありますのでご注意ください。

1. 電波法施行規則第6条第1項第1号に基づく平成18年3月28日総務省告示第173号で定められた電波暗室等の試験設備でご使用いただく。
2. 実験局の免許を取得後ご使用いただく。
3. 技術基準適合証明を取得後ご使用いただく。

なお、本製品は、上記の「ご使用にあたっての注意」を譲渡先、移転先に通知しない限り、譲渡、移転できないものとします。

上記を遵守頂けない場合は、電波法の罰則が適用される可能性があることをご留意ください。日本テキサス・イ

ンスツルメンツ株式会社

東京都新宿区西新宿 6 丁目 2 4 番 1 号

西新宿三井ビル

3.3.3 *Notice for EVMs for Power Line Communication:* Please see http://www.tij.co.jp/lstds/ti_ja/general/eStore/notice_02.page

電力線搬送波通信についての開発キットをお使いになる際の注意事項については、次のところをご覧ください。 <https://www.ti.com/ja-jp/legal/notice-for-evaluation-kits-for-power-line-communication.html>

3.4 European Union

3.4.1 *For EVMs subject to EU Directive 2014/30/EU (Electromagnetic Compatibility Directive):*

This is a class A product intended for use in environments other than domestic environments that are connected to a low-voltage power-supply network that supplies buildings used for domestic purposes. In a domestic environment this product may cause radio interference in which case the user may be required to take adequate measures.

-
4. *EVM Use Restrictions and Warnings:*
 - 4.1 EVMS ARE NOT FOR USE IN FUNCTIONAL SAFETY AND/OR SAFETY CRITICAL EVALUATIONS, INCLUDING BUT NOT LIMITED TO EVALUATIONS OF LIFE SUPPORT APPLICATIONS.
 - 4.2 User must read and apply the user guide and other available documentation provided by TI regarding the EVM prior to handling or using the EVM, including without limitation any warning or restriction notices. The notices contain important safety information related to, for example, temperatures and voltages.
 - 4.3 *Safety-Related Warnings and Restrictions:*
 - 4.3.1 User shall operate the EVM within TI's recommended specifications and environmental considerations stated in the user guide, other available documentation provided by TI, and any other applicable requirements and employ reasonable and customary safeguards. Exceeding the specified performance ratings and specifications (including but not limited to input and output voltage, current, power, and environmental ranges) for the EVM may cause personal injury or death, or property damage. If there are questions concerning performance ratings and specifications, User should contact a TI field representative prior to connecting interface electronics including input power and intended loads. Any loads applied outside of the specified output range may also result in unintended and/or inaccurate operation and/or possible permanent damage to the EVM and/or interface electronics. Please consult the EVM user guide prior to connecting any load to the EVM output. If there is uncertainty as to the load specification, please contact a TI field representative. During normal operation, even with the inputs and outputs kept within the specified allowable ranges, some circuit components may have elevated case temperatures. These components include but are not limited to linear regulators, switching transistors, pass transistors, current sense resistors, and heat sinks, which can be identified using the information in the associated documentation. When working with the EVM, please be aware that the EVM may become very warm.
 - 4.3.2 EVMs are intended solely for use by technically qualified, professional electronics experts who are familiar with the dangers and application risks associated with handling electrical mechanical components, systems, and subsystems. User assumes all responsibility and liability for proper and safe handling and use of the EVM by User or its employees, affiliates, contractors or designees. User assumes all responsibility and liability to ensure that any interfaces (electronic and/or mechanical) between the EVM and any human body are designed with suitable isolation and means to safely limit accessible leakage currents to minimize the risk of electrical shock hazard. User assumes all responsibility and liability for any improper or unsafe handling or use of the EVM by User or its employees, affiliates, contractors or designees.
 - 4.4 User assumes all responsibility and liability to determine whether the EVM is subject to any applicable international, federal, state, or local laws and regulations related to User's handling and use of the EVM and, if applicable, User assumes all responsibility and liability for compliance in all respects with such laws and regulations. User assumes all responsibility and liability for proper disposal and recycling of the EVM consistent with all applicable international, federal, state, and local requirements.
 5. *Accuracy of Information:* To the extent TI provides information on the availability and function of EVMs, TI attempts to be as accurate as possible. However, TI does not warrant the accuracy of EVM descriptions, EVM availability or other information on its websites as accurate, complete, reliable, current, or error-free.
 6. *Disclaimers:*
 - 6.1 EXCEPT AS SET FORTH ABOVE, EVMS AND ANY MATERIALS PROVIDED WITH THE EVM (INCLUDING, BUT NOT LIMITED TO, REFERENCE DESIGNS AND THE DESIGN OF THE EVM ITSELF) ARE PROVIDED "AS IS" AND "WITH ALL FAULTS." TI DISCLAIMS ALL OTHER WARRANTIES, EXPRESS OR IMPLIED, REGARDING SUCH ITEMS, INCLUDING BUT NOT LIMITED TO ANY EPIDEMIC FAILURE WARRANTY OR IMPLIED WARRANTIES OF MERCHANTABILITY OR FITNESS FOR A PARTICULAR PURPOSE OR NON-INFRINGEMENT OF ANY THIRD PARTY PATENTS, COPYRIGHTS, TRADE SECRETS OR OTHER INTELLECTUAL PROPERTY RIGHTS.
 - 6.2 EXCEPT FOR THE LIMITED RIGHT TO USE THE EVM SET FORTH HEREIN, NOTHING IN THESE TERMS SHALL BE CONSTRUED AS GRANTING OR CONFERRING ANY RIGHTS BY LICENSE, PATENT, OR ANY OTHER INDUSTRIAL OR INTELLECTUAL PROPERTY RIGHT OF TI, ITS SUPPLIERS/LICENSORS OR ANY OTHER THIRD PARTY, TO USE THE EVM IN ANY FINISHED END-USER OR READY-TO-USE FINAL PRODUCT, OR FOR ANY INVENTION, DISCOVERY OR IMPROVEMENT, REGARDLESS OF WHEN MADE, CONCEIVED OR ACQUIRED.
 7. *USER'S INDEMNITY OBLIGATIONS AND REPRESENTATIONS.* USER WILL DEFEND, INDEMNIFY AND HOLD TI, ITS LICENSORS AND THEIR REPRESENTATIVES HARMLESS FROM AND AGAINST ANY AND ALL CLAIMS, DAMAGES, LOSSES, EXPENSES, COSTS AND LIABILITIES (COLLECTIVELY, "CLAIMS") ARISING OUT OF OR IN CONNECTION WITH ANY HANDLING OR USE OF THE EVM THAT IS NOT IN ACCORDANCE WITH THESE TERMS. THIS OBLIGATION SHALL APPLY WHETHER CLAIMS ARISE UNDER STATUTE, REGULATION, OR THE LAW OF TORT, CONTRACT OR ANY OTHER LEGAL THEORY, AND EVEN IF THE EVM FAILS TO PERFORM AS DESCRIBED OR EXPECTED.

8. *Limitations on Damages and Liability:*

8.1 *General Limitations.* IN NO EVENT SHALL TI BE LIABLE FOR ANY SPECIAL, COLLATERAL, INDIRECT, PUNITIVE, INCIDENTAL, CONSEQUENTIAL, OR EXEMPLARY DAMAGES IN CONNECTION WITH OR ARISING OUT OF THESE TERMS OR THE USE OF THE EVMS , REGARDLESS OF WHETHER TI HAS BEEN ADVISED OF THE POSSIBILITY OF SUCH DAMAGES. EXCLUDED DAMAGES INCLUDE, BUT ARE NOT LIMITED TO, COST OF REMOVAL OR REINSTALLATION, ANCILLARY COSTS TO THE PROCUREMENT OF SUBSTITUTE GOODS OR SERVICES, RETESTING, OUTSIDE COMPUTER TIME, LABOR COSTS, LOSS OF GOODWILL, LOSS OF PROFITS, LOSS OF SAVINGS, LOSS OF USE, LOSS OF DATA, OR BUSINESS INTERRUPTION. NO CLAIM, SUIT OR ACTION SHALL BE BROUGHT AGAINST TI MORE THAN TWELVE (12) MONTHS AFTER THE EVENT THAT GAVE RISE TO THE CAUSE OF ACTION HAS OCCURRED.

8.2 *Specific Limitations.* IN NO EVENT SHALL TI'S AGGREGATE LIABILITY FROM ANY USE OF AN EVM PROVIDED HEREUNDER, INCLUDING FROM ANY WARRANTY, INDEMNITY OR OTHER OBLIGATION ARISING OUT OF OR IN CONNECTION WITH THESE TERMS, , EXCEED THE TOTAL AMOUNT PAID TO TI BY USER FOR THE PARTICULAR EVM(S) AT ISSUE DURING THE PRIOR TWELVE (12) MONTHS WITH RESPECT TO WHICH LOSSES OR DAMAGES ARE CLAIMED. THE EXISTENCE OF MORE THAN ONE CLAIM SHALL NOT ENLARGE OR EXTEND THIS LIMIT.

9. *Return Policy.* Except as otherwise provided, TI does not offer any refunds, returns, or exchanges. Furthermore, no return of EVM(s) will be accepted if the package has been opened and no return of the EVM(s) will be accepted if they are damaged or otherwise not in a resalable condition. If User feels it has been incorrectly charged for the EVM(s) it ordered or that delivery violates the applicable order, User should contact TI. All refunds will be made in full within thirty (30) working days from the return of the components(s), excluding any postage or packaging costs.

10. *Governing Law:* These terms and conditions shall be governed by and interpreted in accordance with the laws of the State of Texas, without reference to conflict-of-laws principles. User agrees that non-exclusive jurisdiction for any dispute arising out of or relating to these terms and conditions lies within courts located in the State of Texas and consents to venue in Dallas County, Texas. Notwithstanding the foregoing, any judgment may be enforced in any United States or foreign court, and TI may seek injunctive relief in any United States or foreign court.

Mailing Address: Texas Instruments, Post Office Box 655303, Dallas, Texas 75265
Copyright © 2023, Texas Instruments Incorporated

IMPORTANT NOTICE AND DISCLAIMER

TI PROVIDES TECHNICAL AND RELIABILITY DATA (INCLUDING DATA SHEETS), DESIGN RESOURCES (INCLUDING REFERENCE DESIGNS), APPLICATION OR OTHER DESIGN ADVICE, WEB TOOLS, SAFETY INFORMATION, AND OTHER RESOURCES "AS IS" AND WITH ALL FAULTS, AND DISCLAIMS ALL WARRANTIES, EXPRESS AND IMPLIED, INCLUDING WITHOUT LIMITATION ANY IMPLIED WARRANTIES OF MERCHANTABILITY, FITNESS FOR A PARTICULAR PURPOSE OR NON-INFRINGEMENT OF THIRD PARTY INTELLECTUAL PROPERTY RIGHTS.

These resources are intended for skilled developers designing with TI products. You are solely responsible for (1) selecting the appropriate TI products for your application, (2) designing, validating and testing your application, and (3) ensuring your application meets applicable standards, and any other safety, security, regulatory or other requirements.

These resources are subject to change without notice. TI grants you permission to use these resources only for development of an application that uses the TI products described in the resource. Other reproduction and display of these resources is prohibited. No license is granted to any other TI intellectual property right or to any third party intellectual property right. TI disclaims responsibility for, and you will fully indemnify TI and its representatives against, any claims, damages, costs, losses, and liabilities arising out of your use of these resources.

TI's products are provided subject to [TI's Terms of Sale](#) or other applicable terms available either on [ti.com](https://www.ti.com) or provided in conjunction with such TI products. TI's provision of these resources does not expand or otherwise alter TI's applicable warranties or warranty disclaimers for TI products.

TI objects to and rejects any additional or different terms you may have proposed.

Mailing Address: Texas Instruments, Post Office Box 655303, Dallas, Texas 75265
Copyright © 2023, Texas Instruments Incorporated