



ABSTRACT

The SimpleLink™ Wi-Fi® SensorTag from Texas Instruments® (model CC3200SensorTag) provides a demo platform for showcasing the capabilities of the CC3200 device. With this easy-to-use platform, environmental sensing and other Internet of Things (IoT) applications can be done with ease.

Table of Contents

Trademarks	1
1 Introduction	2
1.1 CC3200 SensorTag.....	2
2 Hardware Description	2
2.1 RF Function and Frequency Range.....	2
3 Operation Description	3
3.1 Downloading the SensorTag App.....	3
3.2 Setting Up the SensorTag as an Access Point.....	3
3.3 Connecting the SensorTag to Your Local Wi-Fi Network.....	5
3.4 Switching Between Modes.....	6
3.5 Troubleshooting.....	6
3.6 Replacing the Batteries.....	7
Revision History	9

Trademarks

SimpleLink™ and Internet-on-a chip™ are trademarks of Texas Instruments.

Google Play™ is a trademark of Google.

Texas Instruments® is a registered trademark of Texas Instruments.

ARM® and Cortex® are registered trademarks of ARM Limited.

Apple® is a registered trademark of Apple, Inc.

IOS® is a registered trademark of Cisco Systems, Inc.

IBM® is a registered trademark of IBM Corporation.

All other trademarks are the property of their respective owners.

1 Introduction

1.1 CC3200 SensorTag

The high-performance CC3200 device is the industry's first single-chip microcontroller (MCU) with built-in Wi-Fi connectivity for easy system application. Created for the Internet of Things (IoT), the SimpleLink™ Wi-Fi CC3200 device is a wireless MCU that integrates a high-performance ARM® Cortex®-M4 MCU that allows customers to develop an entire application with a single device. With on-chip Wi-Fi, internet, and robust security protocols, no prior Wi-Fi experience is needed for fast development.

The CC3200 SensorTag is a low-cost IoT demo platform for ARM® Cortex®-M4F-based microcontrollers. The SensorTag design highlights the Internet-on-a chip™ solution and Wi-Fi capabilities. The CC3200 SensorTag features programmable user buttons, LEDs, reed relay, digital microphone, and a buzzer for user interaction. Onboard sensors, gyroscope, accelerometer, and compass allow for easy environmental sensing and IoT applications. [Figure 1-1](#) shows the CC3200 SensorTag.

The CC3200 Wi-Fi SensorTag is intended for demonstration purposes only. For Wi-Fi development and prototyping, TI recommends the [CC3220SF LaunchPad development kit](#). For a similar example to the CC3200 Sensortag that can be used for development, download the [Sensor and Actuator Plugin for SimpleLink MCU SDKs](#) and use the example for CC3220SF called "mqtt_sensor". This example requires the [Sensors BoosterPack Plug-In Module](#) for sensor data.

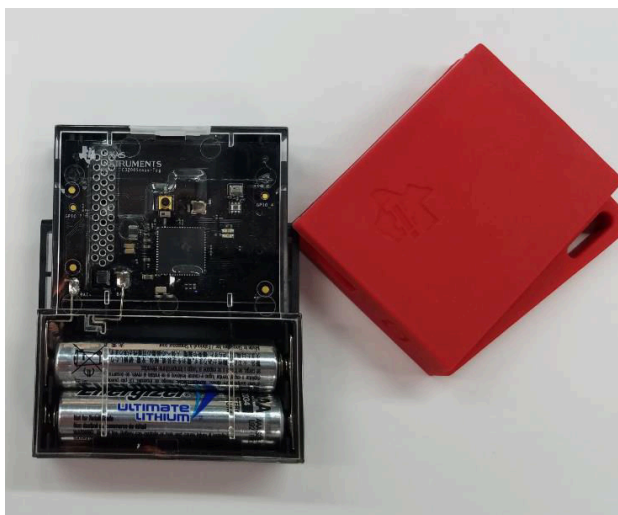


Figure 1-1. CC3200 SensorTag

2 Hardware Description

2.1 RF Function and Frequency Range

The CC3200 SensorTag device is designed to operate in the WLAN 2.4-GHz band. The CC3200 SensorTag device also supports Channels 1 through 11 (2142 MHz to 2462 MHz). The SensorTag design uses the SimpleLink Wi-Fi CC3200 Internet-on-a chip device (see [CC3200 SimpleLink™ Wi-Fi® and IoT SensorTag Design Files](#)).

Note

The maximum RF power transmitted in each WLAN 2.4-GHz band is 16.5 dBm (EIRP power).

3 Operation Description

At start-up, the SensorTag enters access point mode for 2 minutes. When the SensorTag enters access point mode, the red LED blinks three times.

Note

After 5 minutes, the SensorTag emits a short beep and enters hibernate mode. To wake the SensorTag from hibernate mode into access point mode, press the power button.

TI recommends using the [Watch DevPack](#) with the Wi-Fi SensorTag. The display shows important status information and technical data that is useful for debugging network settings.

3.1 Downloading the SensorTag App

The SensorTag is available from the Apple® store and the Google Play™ store.

- [SimpleLink SensorTag, Google Play store](#)
- [TI SensorTag, Apple Store](#)

3.2 Setting Up the SensorTag as an Access Point

Pull the plastic tab on the batteries to power the SensorTag.

Note

If the SensorTag has been connected to an access point before, you can reset the Wi-Fi settings by pressing both buttons on the side simultaneously for 6 seconds.

3.2.1 First-Time Configuration Only

On your mobile phone, go to the *Settings* menu and connect to the SensorTag-xx access point (see [Figure 3-1](#)). The -xx value is the two last digits of the SensorTag MAC address; this value is used to uniquely identify your SensorTag.

Connecting the phone to the access point may take up to 30 seconds the first time it connects.

Note

Only one device can be connected to the Wi-Fi SensorTag when it is configured as an access point. On some phone models, the 4G connection and 5-GHz Wi-Fi must be disabled to detect the SensorTag as access point.

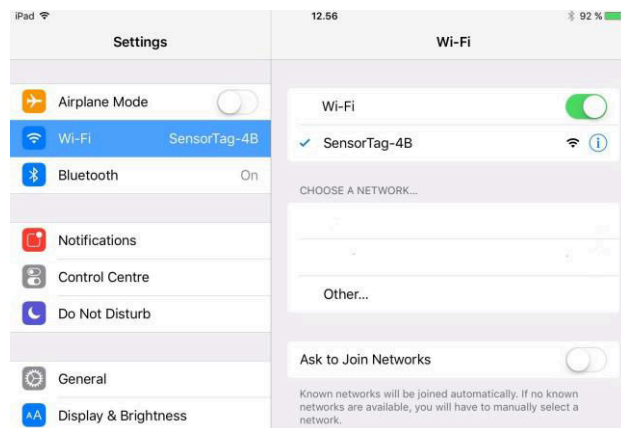


Figure 3-1. Example of SensorTag Access Point

To launch the SensorTag app, you may have to pull down the menu in the SensorTag device list to refresh the device list. The app detects the new Wi-Fi SensorTag. If the SensorTag is programmed with firmware version

0.98, the app will prompt you to upgrade the SensorTag to the latest version (see [Figure 3-2](#)). Follow the steps to upgrade the SensorTag.

If an upgrade has already taken place and a newer firmware version becomes available, users must first revert back to the factory default (firmware version 0.98). This can be done in one of 2 ways:

- In the mobile application, select Firmware Upgrade → Factory Default.
- or
- Depress the two SensorTag hardware buttons simultaneously for a few seconds until the beep sound is activated.

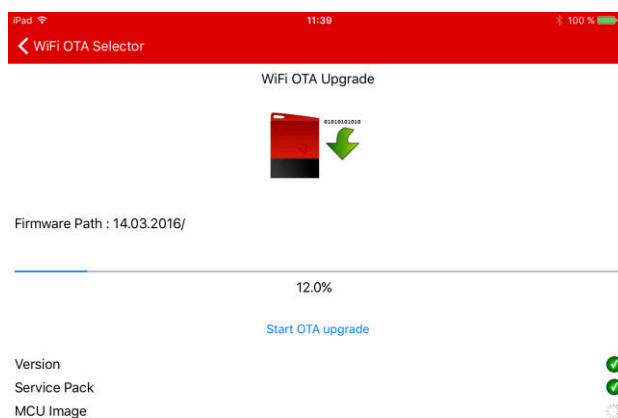


Figure 3-2. Wi-Fi® OTA Upgrade

From the firmware upgrade screen, go back to the SensorTag device list screen (see [Figure 3-3](#) and [Figure 3-4](#)).

- For IOS® devices, go into Settings and manually reconnect to the SensorTag-xx access point.
- For Android devices, the phone will keep the connection to the SensorTag access point. On the Android device, select *Configure new Wi-Fi SensorTag*, and follow the on-screen instructions to configure the Wi-Fi settings.

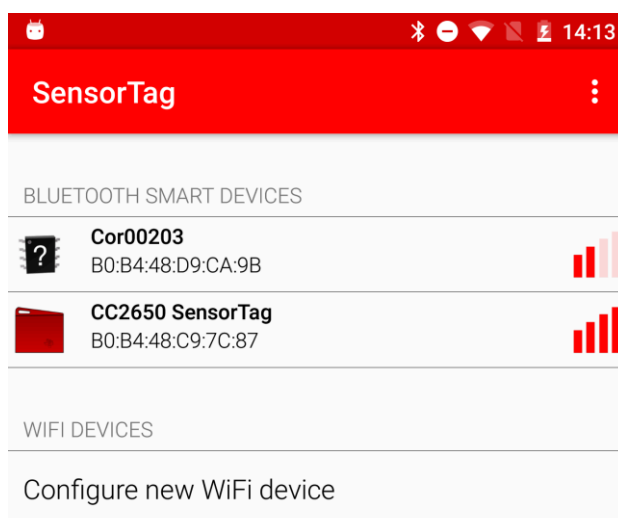


Figure 3-3. Available Device

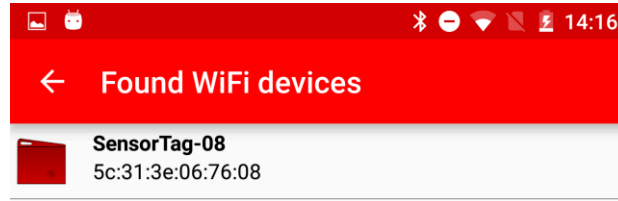


Figure 3-4. New Device Found

3.3 Connecting the SensorTag to Your Local Wi-Fi Network

On the *Sensor View* screen, the SensorTag data is displayed (see [Figure 3-5](#)). The default update interval for the sensor view is 1 second. After 90 seconds of inactivity, the SensorTag emits a short beep and enters hibernate mode to save power. Press any button to wake up the SensorTag.

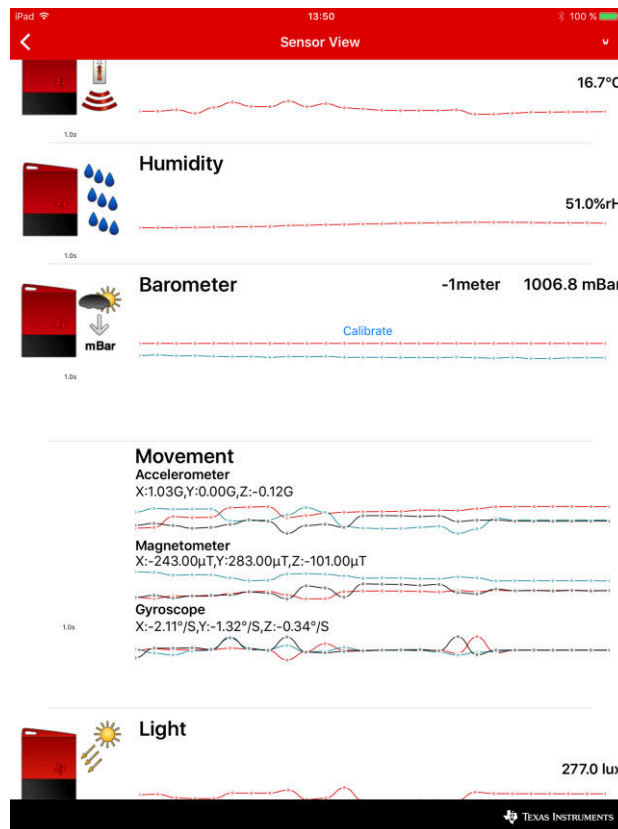


Figure 3-5. SensorTag Sensor Data

To view the sensor data directly in the Cloud, follow the Cloud URL. The SensorTag will now send data directly to the IBM® quickstart cloud using MQTT.

Note

These data are sent directly without any security or encryption enabled.

To view the SensorTag on another PC or web browser, use the *Share* button and share by email (see [Figure 3-6](#)).

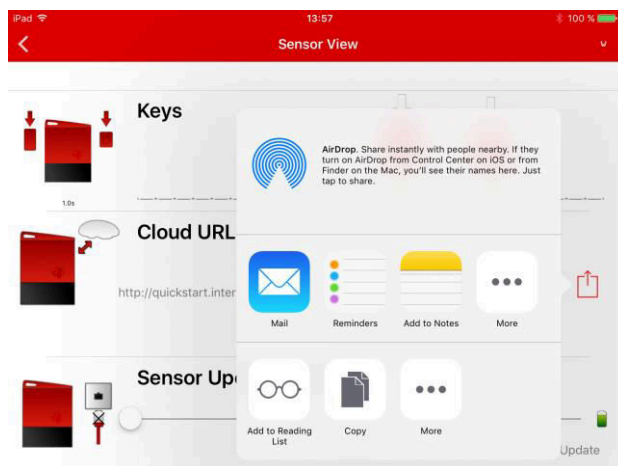


Figure 3-6. Sharing SensorTag View

3.4 Switching Between Modes

If you would like to repeat the provisioning method, press and hold the user button for 6 seconds to toggle between station mode (connected to your AP) and AP mode (direct connection to your phone). When in AP mode, the provisioning process can be repeated.

3.5 Troubleshooting

If you have problems connecting the SensorTag to your access point, use the advanced setup.

Take note of the IP address of the SensorTag (see [Figure 3-7](#)).



Figure 3-7. Example of SensorTag IP Address

The IP address can be used to configure the Wi-Fi setup for advanced settings through a web browser. Alternatively, the Wi-Fi SensorTag can be accessed by typing *sensortag.net* in the browser. Advanced Wi-Fi settings can be configured in the profiles tab. (see [Figure 3-8](#)).

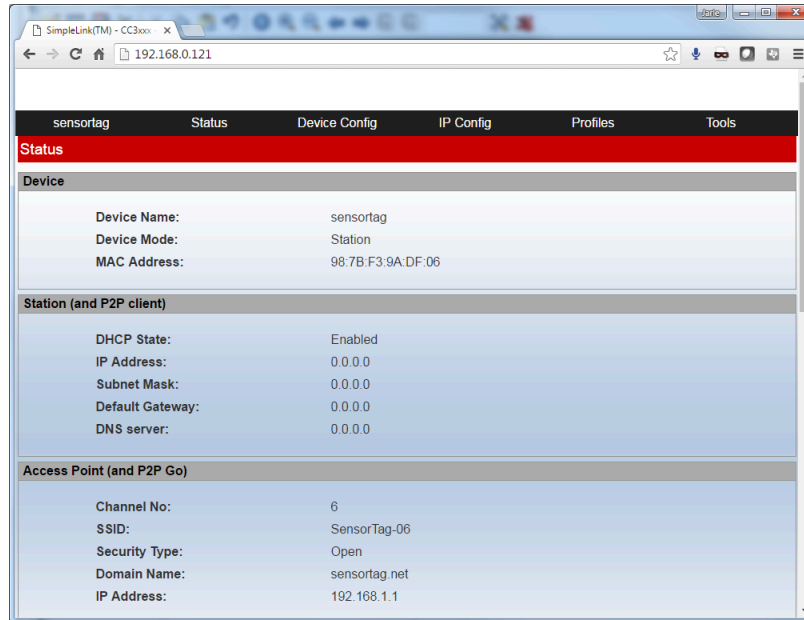


Figure 3-8. Sensortag.net Snippet

Pressing both buttons simultaneously for 6 seconds resets the SensorTag and deletes all the Wi-Fi settings. The SensorTag can now be configured as a new device.

3.6 Replacing the Batteries

To replace the battery, follow these steps:

1. Remove the red rubber casing and plastic casing as shown in [Figure 3-9](#).
2. Remove and replace batteries.

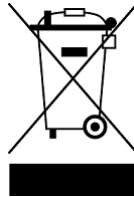


Figure 3-9. Replacing the Batteries

WARNING

There is a risk of explosion if the batteries are replaced by an incorrect type. To minimize the risk of explosion, ensure the replacement batteries are the correct type. Dispose of used batteries according to the instructions.

Waste Electrical and Electronic Equipment (WEEE)



This symbol means that according to local laws and regulations your product and/or its battery shall be disposed of separately from household waste. When this product reaches its end of life, take it to a collection point designated by local authorities. Proper recycling of your product will protect human health and the environment.

Revision History

Changes from March 1, 2017 to July 23, 2020 (from Revision A (February 2017) to Revision B (July 2020))

Page

-
- Updated Introduction..... [2](#)
-

IMPORTANT NOTICE AND DISCLAIMER

TI PROVIDES TECHNICAL AND RELIABILITY DATA (INCLUDING DATASHEETS), DESIGN RESOURCES (INCLUDING REFERENCE DESIGNS), APPLICATION OR OTHER DESIGN ADVICE, WEB TOOLS, SAFETY INFORMATION, AND OTHER RESOURCES "AS IS" AND WITH ALL FAULTS, AND DISCLAIMS ALL WARRANTIES, EXPRESS AND IMPLIED, INCLUDING WITHOUT LIMITATION ANY IMPLIED WARRANTIES OF MERCHANTABILITY, FITNESS FOR A PARTICULAR PURPOSE OR NON-INFRINGEMENT OF THIRD PARTY INTELLECTUAL PROPERTY RIGHTS.

These resources are intended for skilled developers designing with TI products. You are solely responsible for (1) selecting the appropriate TI products for your application, (2) designing, validating and testing your application, and (3) ensuring your application meets applicable standards, and any other safety, security, or other requirements. These resources are subject to change without notice. TI grants you permission to use these resources only for development of an application that uses the TI products described in the resource. Other reproduction and display of these resources is prohibited. No license is granted to any other TI intellectual property right or to any third party intellectual property right. TI disclaims responsibility for, and you will fully indemnify TI and its representatives against, any claims, damages, costs, losses, and liabilities arising out of your use of these resources.

TI's products are provided subject to TI's Terms of Sale (www.ti.com/legal/termsofsale.html) or other applicable terms available either on ti.com or provided in conjunction with such TI products. TI's provision of these resources does not expand or otherwise alter TI's applicable warranties or warranty disclaimers for TI products.

Mailing Address: Texas Instruments, Post Office Box 655303, Dallas, Texas 75265
Copyright © 2020, Texas Instruments Incorporated