

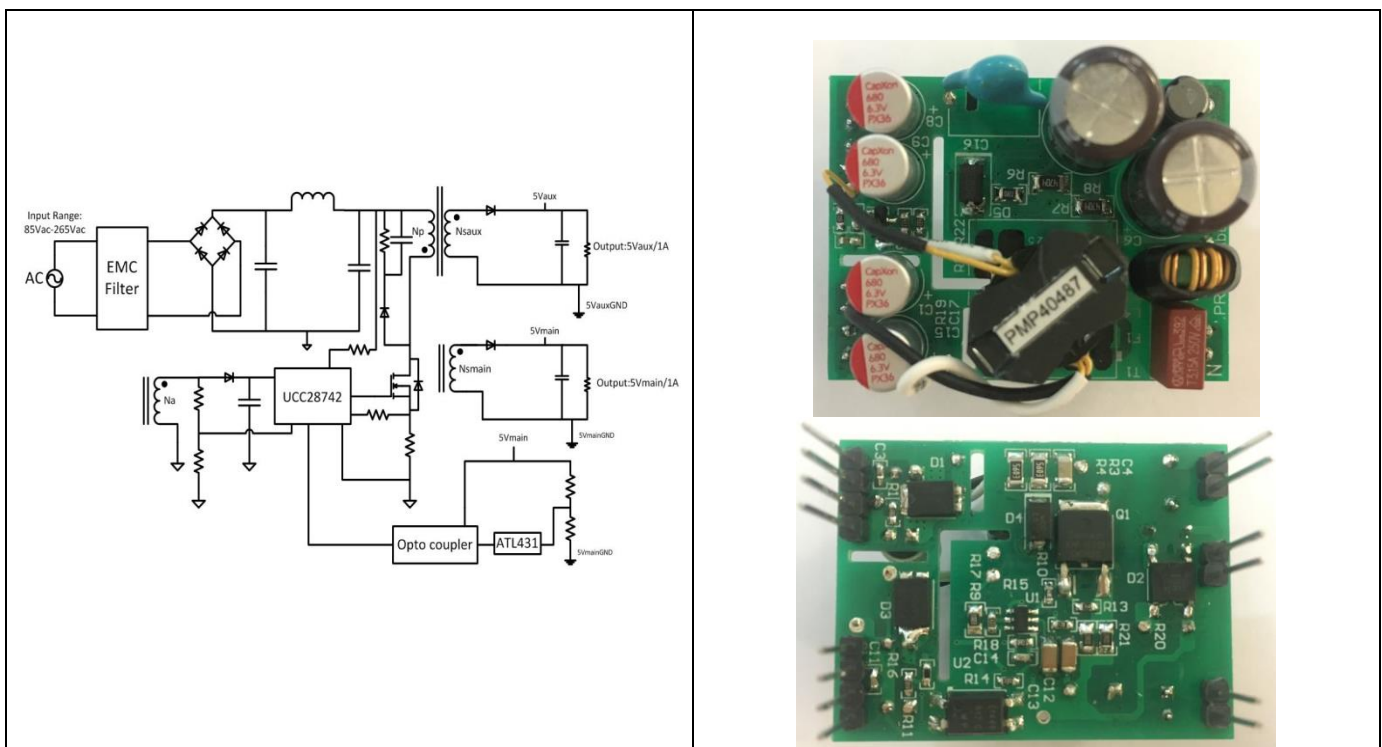
# Test Report: PMP40487

## AC Input, 5-V/1-A and 5-V/1-A dual-output flyback reference design



### Description

The PMP40487 is a 5-V/1-A and 5-V/1-A dual-output flyback auxiliary power supply with secondary-side regulation UCC28742. The design features high efficiency and various fault protections (input UVLO, output over-voltage, over-current, short-circuit). When standby, the converter can consume less power.



An IMPORTANT NOTICE at the end of this TI reference design addresses authorized use, intellectual property matters and other important disclaimers and information.

## 1 Test Prerequisites

### 1.1 Voltage and Current Requirements

**Table 1. Voltage and Current Requirements**

PARAMETER	SPECIFICATIONS
Input	AC Source: 85V AC <sub>RMS</sub> to 265V AC <sub>RMS</sub> AC line frequency range: 47Hz to 63Hz
Output	5V/1A; 5V/1A

### 1.2 Required Equipment

- AC Source: Chroma 61503
- E-Load: Chroma 63101 module
- Multi-meter (voltage): Fluke 287C
- Multi-meter (current): Fluke 287C
- DPO 3054 Digital Phosphor Oscilloscope
- Fluke Thermal Imager
- P5205A 100MHz, High Voltage Differential Probe

## 2 Testing and Results

### 2.1 Efficiency Graphs



### 2.2 Efficiency Data

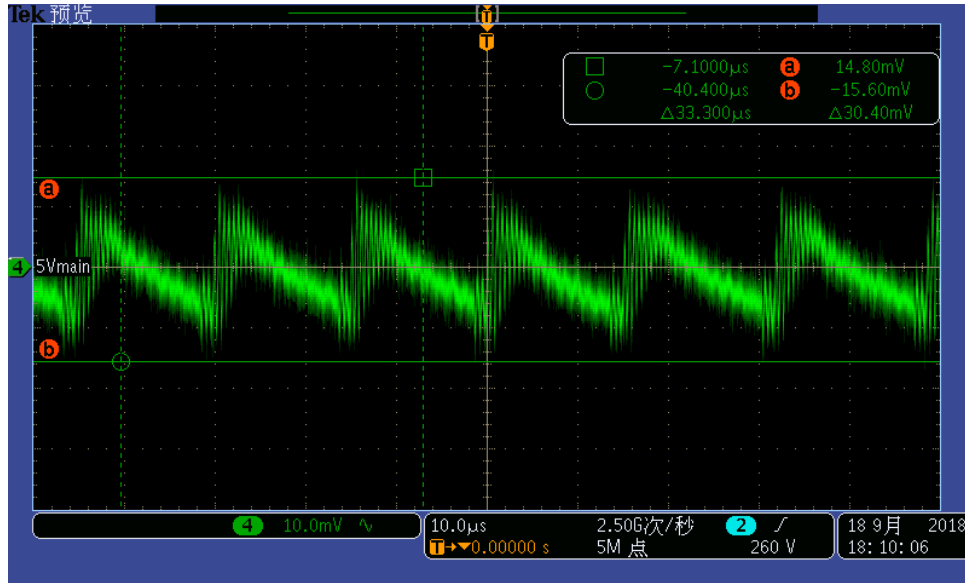
Vin(V)	Pin(W)	5Vmain(V)	I <sub>main</sub> (A)	5Vaux(V)	I <sub>aux</sub> (A)	Efficiency
115	0.028	5.019	0.000	4.9992	0.001	0.18
	2.490	5.018	0.201	5.0426	0.200	0.81
	5.040	5.017	0.409	5.0429	0.400	0.81
	7.470	5.015	0.604	5.0362	0.600	0.81
	9.900	5.014	0.798	5.0320	0.800	0.81
	12.320	5.012	0.991	5.0294	1.000	0.81

Vin(V)	Pin(W)	5Vmain(V)	I <sub>main</sub> (A)	5Vaux(V)	I <sub>aux</sub> (A)	Efficiency
230	0.040	5.020	0.000	5.0120	0.001	0.13
	2.550	5.018	0.201	5.0312	0.200	0.79
	5.080	5.017	0.409	5.0431	0.400	0.80
	7.520	5.015	0.604	5.0456	0.600	0.81
	9.970	5.014	0.798	5.0460	0.800	0.81
	12.400	5.012	0.991	5.0434	1.000	0.81

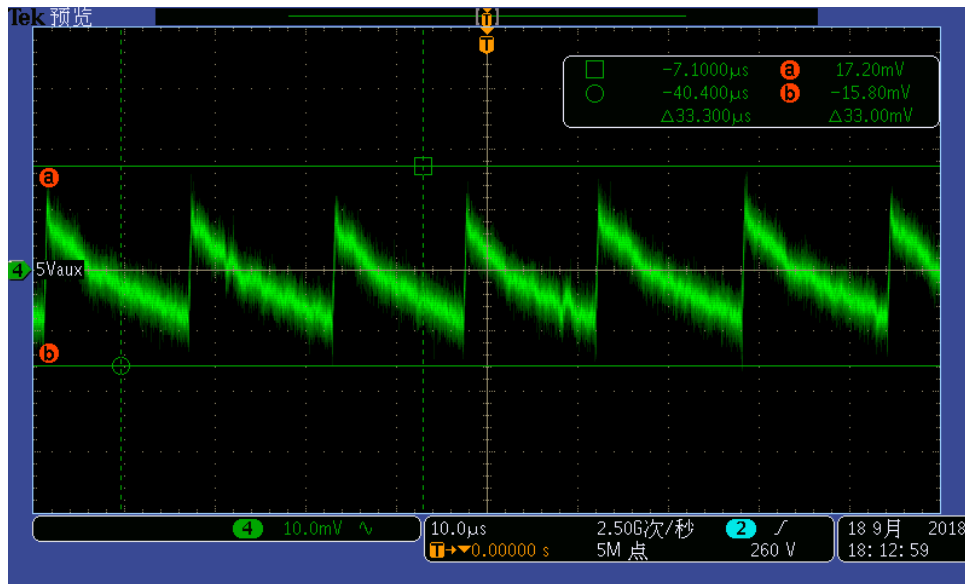
### 3 Waveforms

#### 3.1 Output Voltage Ripple\*

115Vin 5Vmain 1A and 5Vaux 1A



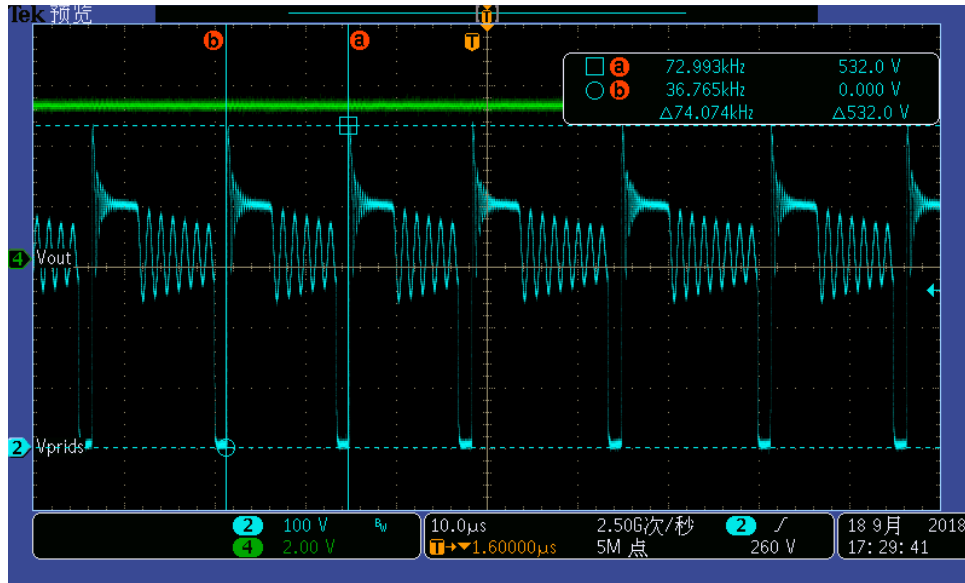
CH4=5Vmain



CH4=5Vaux

### 3.2 MOSFET Voltage Stress

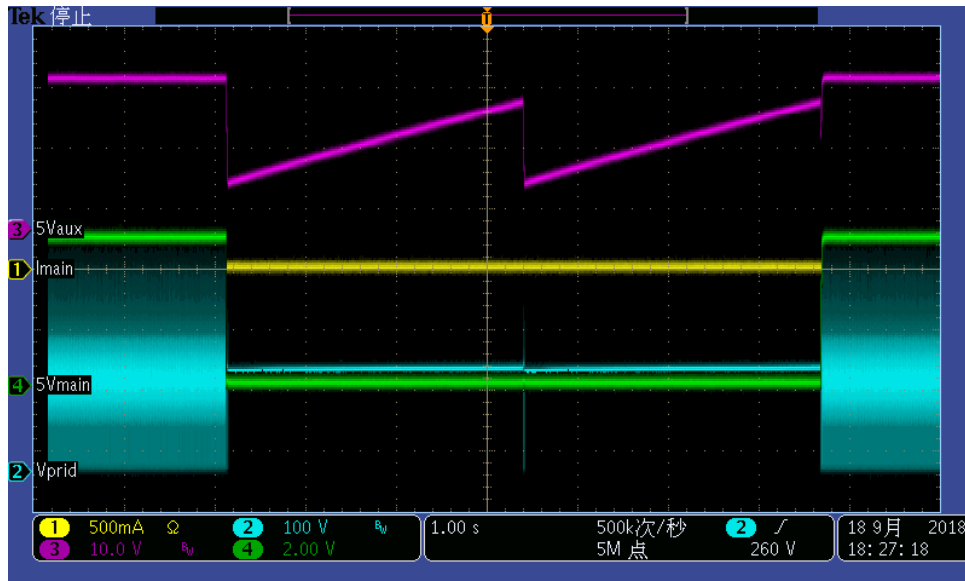
Vin=230Vin 5Vmain 1A and 5Vaux 1A



CH2= Vprids; CH4=Vout with 20MHz bandwidth

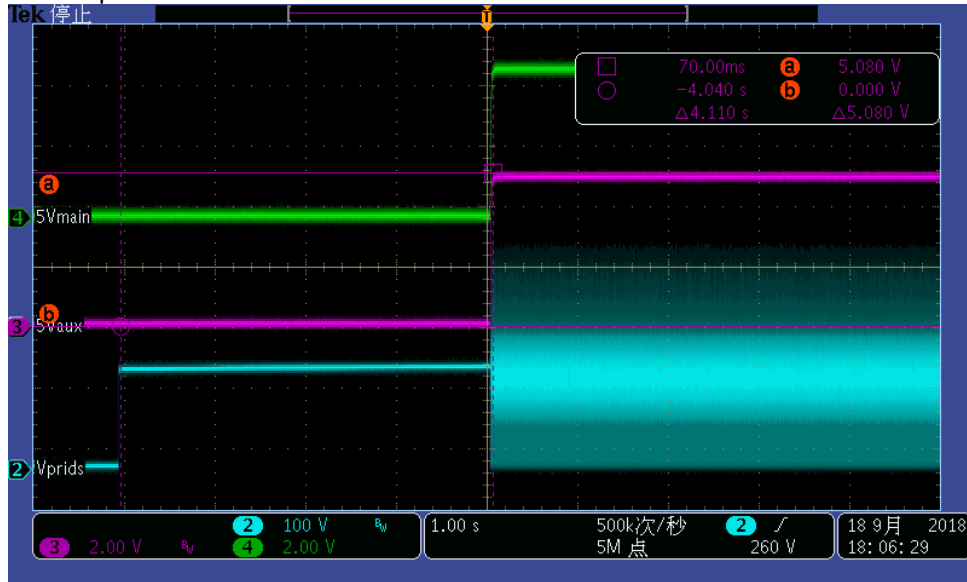
### 3.3 Short Circuit Recovery

180V 12Vout Short Circuit Protection



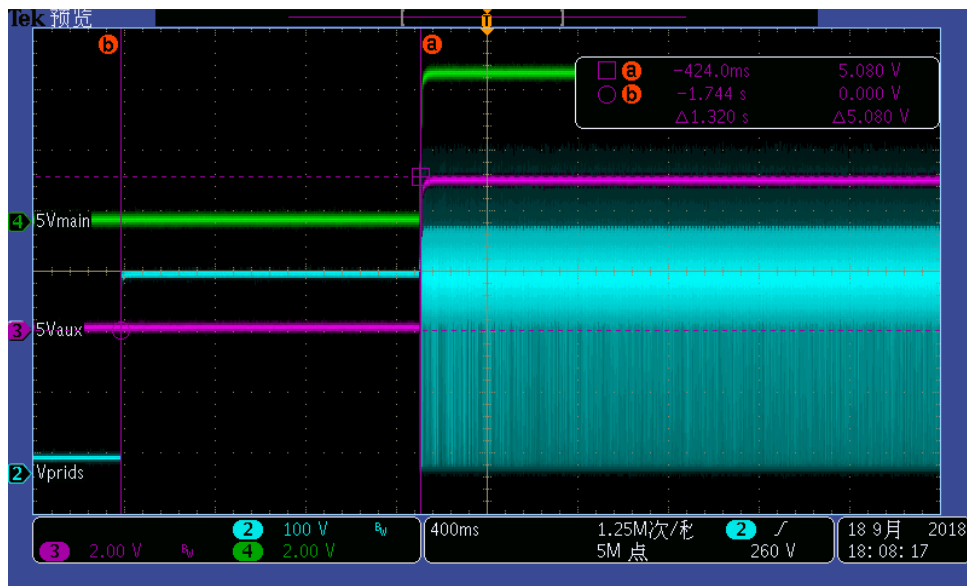
### 3.4 Start-up Sequence\*

#### 115Vin No Load Start-up



CH2= Vprids; CH3=5Vaux; CH4=5Vmain

#### 230Vin No Load Start-up

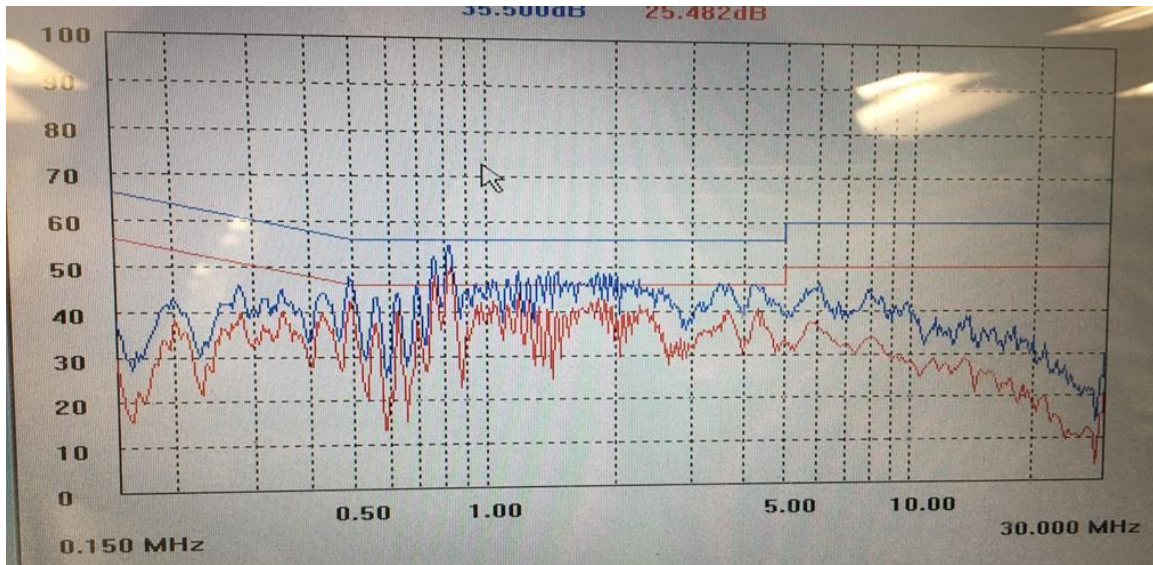


CH2= Vprids; CH3=5Vaux; CH4=5Vmain

### 3.5 EMI CM Performance

Vin=230V<sub>in</sub> 5V<sub>out</sub> 1A and 5V<sub>out</sub> 1A

The converter runs 30mins at ambient temperature 25°C



## IMPORTANT NOTICE AND DISCLAIMER

TI PROVIDES TECHNICAL AND RELIABILITY DATA (INCLUDING DATASHEETS), DESIGN RESOURCES (INCLUDING REFERENCE DESIGNS), APPLICATION OR OTHER DESIGN ADVICE, WEB TOOLS, SAFETY INFORMATION, AND OTHER RESOURCES "AS IS" AND WITH ALL FAULTS, AND DISCLAIMS ALL WARRANTIES, EXPRESS AND IMPLIED, INCLUDING WITHOUT LIMITATION ANY IMPLIED WARRANTIES OF MERCHANTABILITY, FITNESS FOR A PARTICULAR PURPOSE OR NON-INFRINGEMENT OF THIRD PARTY INTELLECTUAL PROPERTY RIGHTS.

These resources are intended for skilled developers designing with TI products. You are solely responsible for (1) selecting the appropriate TI products for your application, (2) designing, validating and testing your application, and (3) ensuring your application meets applicable standards, and any other safety, security, or other requirements. These resources are subject to change without notice. TI grants you permission to use these resources only for development of an application that uses the TI products described in the resource. Other reproduction and display of these resources is prohibited. No license is granted to any other TI intellectual property right or to any third party intellectual property right. TI disclaims responsibility for, and you will fully indemnify TI and its representatives against, any claims, damages, costs, losses, and liabilities arising out of your use of these resources.

TI's products are provided subject to TI's Terms of Sale ([www.ti.com/legal/termsofsale.html](http://www.ti.com/legal/termsofsale.html)) or other applicable terms available either on [ti.com](http://ti.com) or provided in conjunction with such TI products. TI's provision of these resources does not expand or otherwise alter TI's applicable warranties or warranty disclaimers for TI products.

Mailing Address: Texas Instruments, Post Office Box 655303, Dallas, Texas 75265  
Copyright © 2019, Texas Instruments Incorporated