

## Automotive I.MX6 Quad Core Processor Power Solution



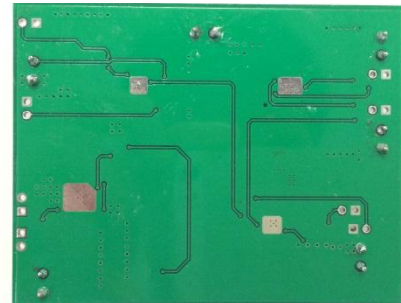
### System Description

This design is an low-cost discrete power solution to power I.MX6 quad core. All the DCDC regulators are running at 2MHz to avoid the AM band interference and provide small solution size. The first stage DCDC converter can support wide Vin range from 6V to 42V, which can support start-stop system as well as load dump. The second stage DCDC provides all the necessary power rails to power up I.MX6 quad core. I.MX6 is very loose on the power sequencing of the different rails so no sequencer is necessary for this design. It uses a 4 layer board with 2oz copper to have better thermal characteristic at 2MHz switching frequency and 85C ambient.

even the highly atypical condition which is dual 1080p video playback plus one 3D graphics

- All the power rails powering I.MX6 ripple are below 5%

### Board Photo



### Featured Applications

- Infotainment Head Unit Systems
- Instrumental Cluster

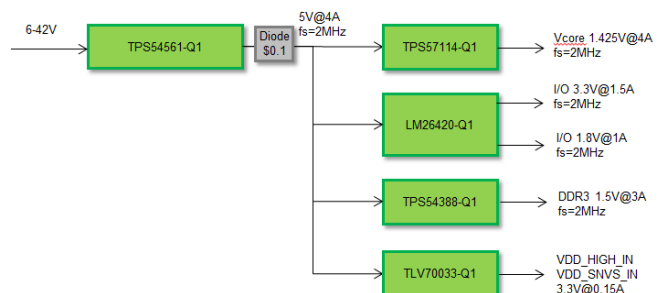
### Design Resources

- Block Diagram and Schematic
- Test Data
- Gerber Files
- Design Files
- Bill of Materials and Design Considerations
- Wiki Page

### Design Features

- Wide input voltage range: off battery 6V to 42V power supply to support start-stop system and load dump
- The DCDC regulator all run at 2MHz to avoid AM band interference and very small form factor
- No sequencer is needed since I.MX6 is very loose on the power rails sequencing
- First stage wide Vin async DCDC converter, TPS54561-Q1, can run at 4A, 5V out at 2MHz to allow users to avoid using controller to save cost, area and avoid voltage shoot through
- I.MX6 vcore voltage can run at 4A, it can provide the current at least 30% higher than

### Block Diagram



### Jump start system design and speed time to market

Comprehensive designs include schematics or block diagrams, BOMs, design files and test reports by experts with deep system and product knowledge. Designs span TI's portfolio of analog, embedded processor and connectivity products and supports a board range of applications including industrial, automotive, medical, consumer, and more. To explore the designs, go to <http://www.ti.com/tidesigns>

## TI Designs: PMP4442

# Automotive I.MX6 Quad Core Processor Power Solution



### Associated Part Numbers

Part Number	Part Description	EVM
<a href="#">TPS54561-Q1</a>	Automotive 4.5V-60V Input 5A Step Down Converter with Soft-Start	<a href="#">EVM</a>
<a href="#">TPS57114-Q1</a>	Automotive 2.95V-6V Input 4A, 2MHz Synchronous Step Down Converter	<a href="#">EVM</a>
<a href="#">LM26420-Q1</a>	Dual 2.0A High Frequency Synchronous Step Down Regulator	<a href="#">EVM</a>
<a href="#">TPS54388-Q1</a>	Automotive 2.95V-6V Input 3A, 2MHz Synchronous Step Down Converter	<a href="#">EVM</a>
<a href="#">TLV70033-Q1</a>	Automotive 200mA, Low Iq, Low Dropout Regulator	<a href="#">EVM</a>

### Design Considerations and Test Data:

- TPS54561-Q1 is a wide Vin 5A async step down regulator, which can run at >2MHz to avoid the AM band interference and to minimize solution size. It can save board area without letting users to use controller to save cost, area and avoid voltage shoot through. It can sync to external clock source to avoid beat frequency. It also has a power good signal to indicate the output voltage has settled within 93% to 106% intended voltage. In addition, it has a slow start pin to adjust the output voltage rise time to control the in-rush current.
- TPS57114-Q1 is a low voltage 4A, fully sync step down regulator, which can run at 2MHz to avoid the AM band interference and to minimize foot print. It can sync to external clock source to avoid beat frequency. It also has a power good signal to indicate the output voltage has settled within 93% to 107% intended voltage. In addition, it has a slow start pin to adjust the output voltage rise time to control the in-rush current.
- LM26420-Q1 is a dual low voltage 2A, fully sync step down regulator which can run at >2MHz to avoid the AM band interference and to minimize solution size. It utilizes current-mode control and internal compensation to provide high-performance regulation over a wide range of operating conditions. In addition, it has included internal soft-start circuitry to reduce inrush current, power good indicators, precision enables, and output overvoltage protection.
- TPS54388-Q1 is a low voltage 3A, fully sync step down regulator, which can run at 2MHz to avoid the AM band interference and to minimize foot print. It can sync to external clock source to avoid beat frequency. It also has a power good signal to indicate the output voltage has settled within 93% to 107% intended voltage. In addition, it has a slow start pin to adjust the output voltage rise time to control the in-rush current.
- The reference design uses a 4 layer board with 2oz copper to pass thermal characteristic with TPS54561-Q1 running at 5V, 4A, 2MHz switching frequency and 85C ambient.
- Below is a graph to show the heat diagram at TPS54561-Q1 running at 5V, 4A, 2MHz switching frequency and TPS57114-Q1 transient testing results at Vout=1.425V with load from 0A-4A



### Jump start system design and speed time to market

Comprehensive designs include schematics or block diagrams, BOMs, design files and test reports by experts with deep system and product knowledge. Designs span TI's portfolio of analog, embedded processor and connectivity products and supports a board range of applications including industrial, automotive, medical, consumer, and more. To explore the designs, go to <http://www.ti.com/tidesigns>

## IMPORTANT NOTICE FOR TI REFERENCE DESIGNS

Texas Instruments Incorporated ("TI") reference designs are solely intended to assist designers ("Buyers") who are developing systems that incorporate TI semiconductor products (also referred to herein as "components"). Buyer understands and agrees that Buyer remains responsible for using its independent analysis, evaluation and judgment in designing Buyer's systems and products.

TI reference designs have been created using standard laboratory conditions and engineering practices. **TI has not conducted any testing other than that specifically described in the published documentation for a particular reference design.** TI may make corrections, enhancements, improvements and other changes to its reference designs.

Buyers are authorized to use TI reference designs with the TI component(s) identified in each particular reference design and to modify the reference design in the development of their end products. HOWEVER, NO OTHER LICENSE, EXPRESS OR IMPLIED, BY ESTOPPEL OR OTHERWISE TO ANY OTHER TI INTELLECTUAL PROPERTY RIGHT, AND NO LICENSE TO ANY THIRD PARTY TECHNOLOGY OR INTELLECTUAL PROPERTY RIGHT, IS GRANTED HEREIN, including but not limited to any patent right, copyright, mask work right, or other intellectual property right relating to any combination, machine, or process in which TI components or services are used. Information published by TI regarding third-party products or services does not constitute a license to use such products or services, or a warranty or endorsement thereof. Use of such information may require a license from a third party under the patents or other intellectual property of the third party, or a license from TI under the patents or other intellectual property of TI.

TI REFERENCE DESIGNS ARE PROVIDED "AS IS". TI MAKES NO WARRANTIES OR REPRESENTATIONS WITH REGARD TO THE REFERENCE DESIGNS OR USE OF THE REFERENCE DESIGNS, EXPRESS, IMPLIED OR STATUTORY, INCLUDING ACCURACY OR COMPLETENESS. TI DISCLAIMS ANY WARRANTY OF TITLE AND ANY IMPLIED WARRANTIES OF MERCHANTABILITY, FITNESS FOR A PARTICULAR PURPOSE, QUIET ENJOYMENT, QUIET POSSESSION, AND NON-INFRINGEMENT OF ANY THIRD PARTY INTELLECTUAL PROPERTY RIGHTS WITH REGARD TO TI REFERENCE DESIGNS OR USE THEREOF. TI SHALL NOT BE LIABLE FOR AND SHALL NOT DEFEND OR INDEMNIFY BUYERS AGAINST ANY THIRD PARTY INFRINGEMENT CLAIM THAT RELATES TO OR IS BASED ON A COMBINATION OF COMPONENTS PROVIDED IN A TI REFERENCE DESIGN. IN NO EVENT SHALL TI BE LIABLE FOR ANY ACTUAL, SPECIAL, INCIDENTAL, CONSEQUENTIAL OR INDIRECT DAMAGES, HOWEVER CAUSED, ON ANY THEORY OF LIABILITY AND WHETHER OR NOT TI HAS BEEN ADVISED OF THE POSSIBILITY OF SUCH DAMAGES, ARISING IN ANY WAY OUT OF TI REFERENCE DESIGNS OR BUYER'S USE OF TI REFERENCE DESIGNS.

TI reserves the right to make corrections, enhancements, improvements and other changes to its semiconductor products and services per JESD46, latest issue, and to discontinue any product or service per JESD48, latest issue. Buyers should obtain the latest relevant information before placing orders and should verify that such information is current and complete. All semiconductor products are sold subject to TI's terms and conditions of sale supplied at the time of order acknowledgment.

TI warrants performance of its components to the specifications applicable at the time of sale, in accordance with the warranty in TI's terms and conditions of sale of semiconductor products. Testing and other quality control techniques for TI components are used to the extent TI deems necessary to support this warranty. Except where mandated by applicable law, testing of all parameters of each component is not necessarily performed.

TI assumes no liability for applications assistance or the design of Buyers' products. Buyers are responsible for their products and applications using TI components. To minimize the risks associated with Buyers' products and applications, Buyers should provide adequate design and operating safeguards.

Reproduction of significant portions of TI information in TI data books, data sheets or reference designs is permissible only if reproduction is without alteration and is accompanied by all associated warranties, conditions, limitations, and notices. TI is not responsible or liable for such altered documentation. Information of third parties may be subject to additional restrictions.

Buyer acknowledges and agrees that it is solely responsible for compliance with all legal, regulatory and safety-related requirements concerning its products, and any use of TI components in its applications, notwithstanding any applications-related information or support that may be provided by TI. Buyer represents and agrees that it has all the necessary expertise to create and implement safeguards that anticipate dangerous failures, monitor failures and their consequences, lessen the likelihood of dangerous failures and take appropriate remedial actions. Buyer will fully indemnify TI and its representatives against any damages arising out of the use of any TI components in Buyer's safety-critical applications.

In some cases, TI components may be promoted specifically to facilitate safety-related applications. With such components, TI's goal is to help enable customers to design and create their own end-product solutions that meet applicable functional safety standards and requirements. Nonetheless, such components are subject to these terms.

No TI components are authorized for use in FDA Class III (or similar life-critical medical equipment) unless authorized officers of the parties have executed an agreement specifically governing such use.

Only those TI components that TI has specifically designated as military grade or "enhanced plastic" are designed and intended for use in military/aerospace applications or environments. Buyer acknowledges and agrees that any military or aerospace use of TI components that have **not** been so designated is solely at Buyer's risk, and Buyer is solely responsible for compliance with all legal and regulatory requirements in connection with such use.

TI has specifically designated certain components as meeting ISO/TS16949 requirements, mainly for automotive use. In any case of use of non-designated products, TI will not be responsible for any failure to meet ISO/TS16949.