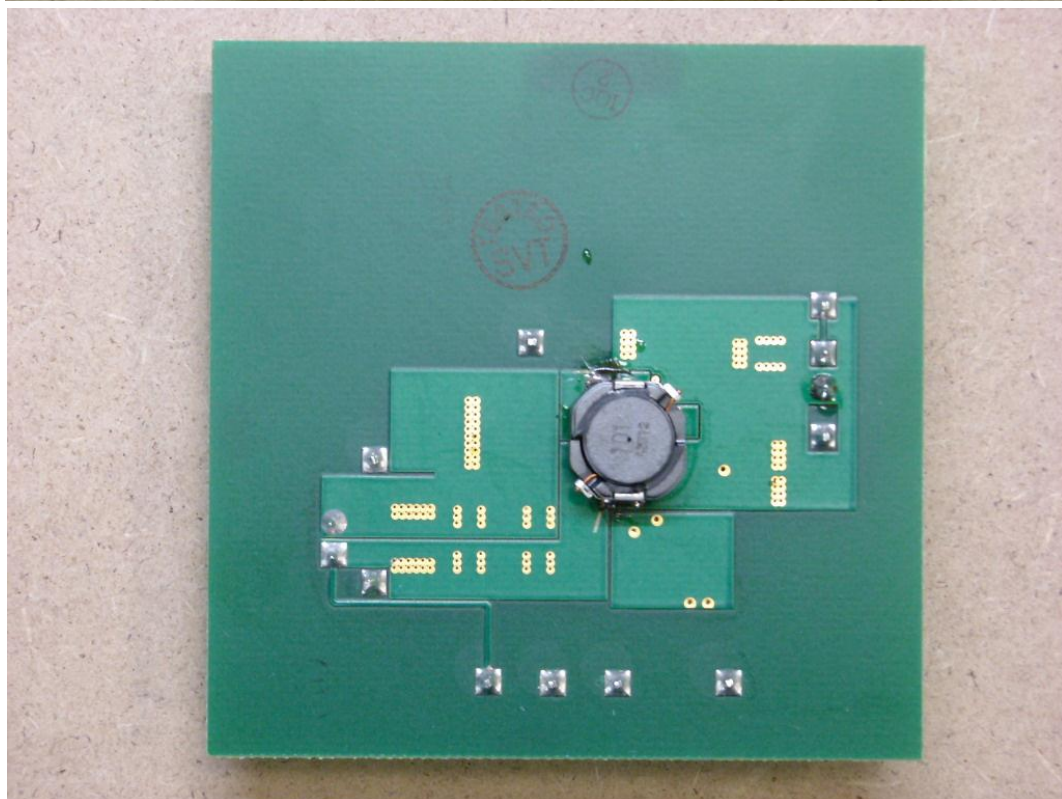
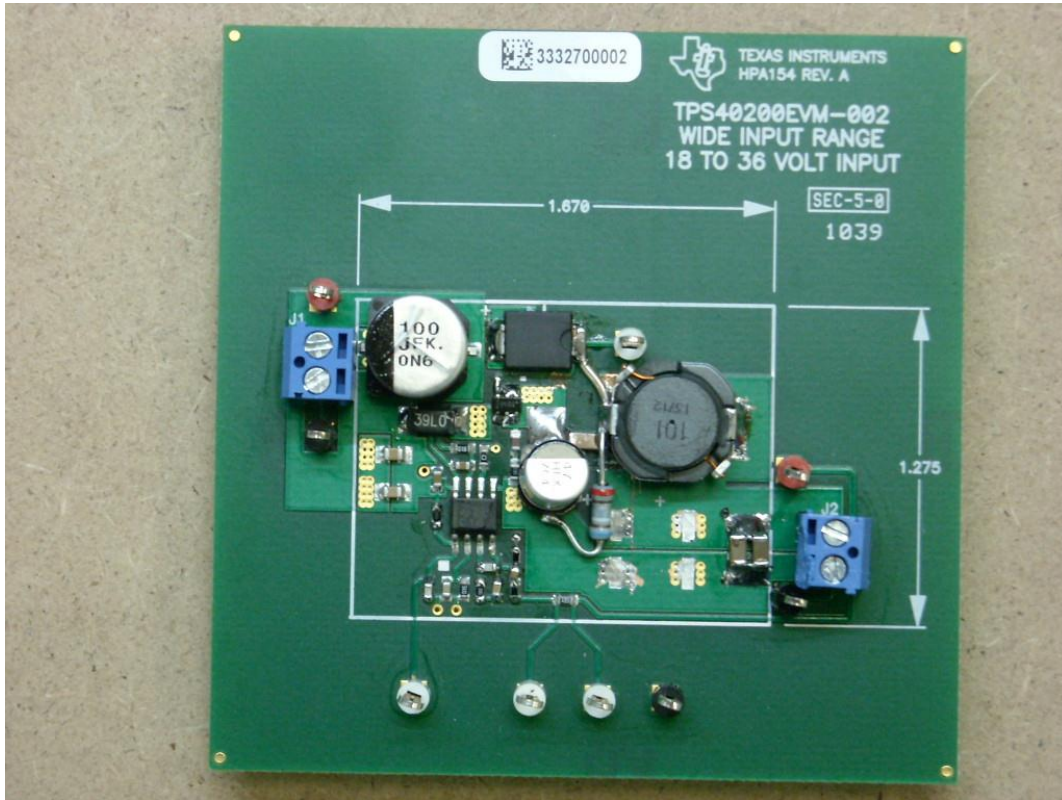


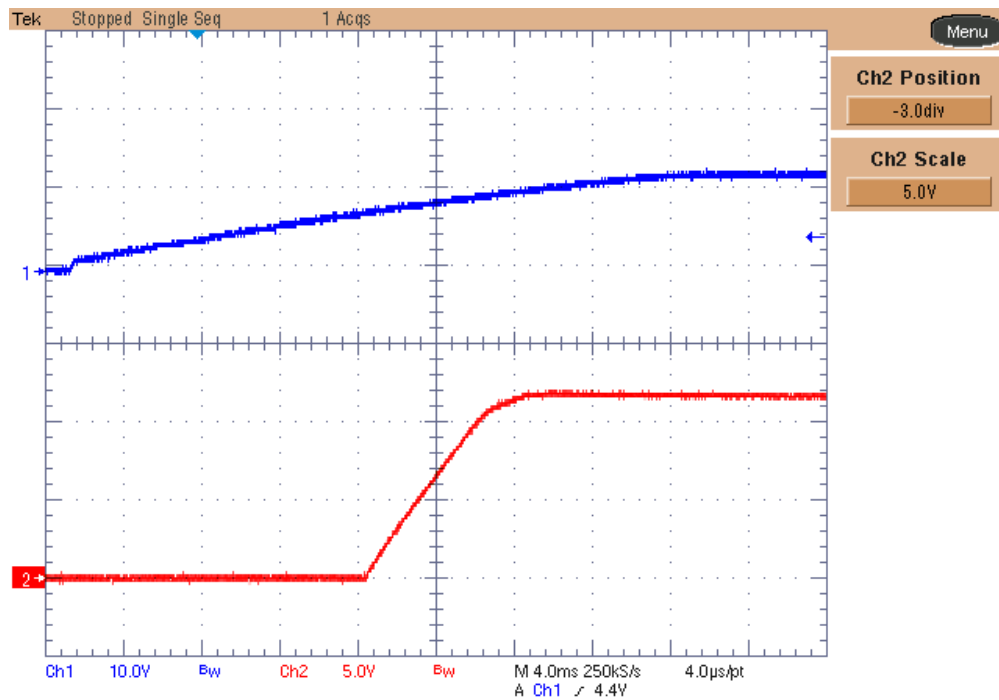
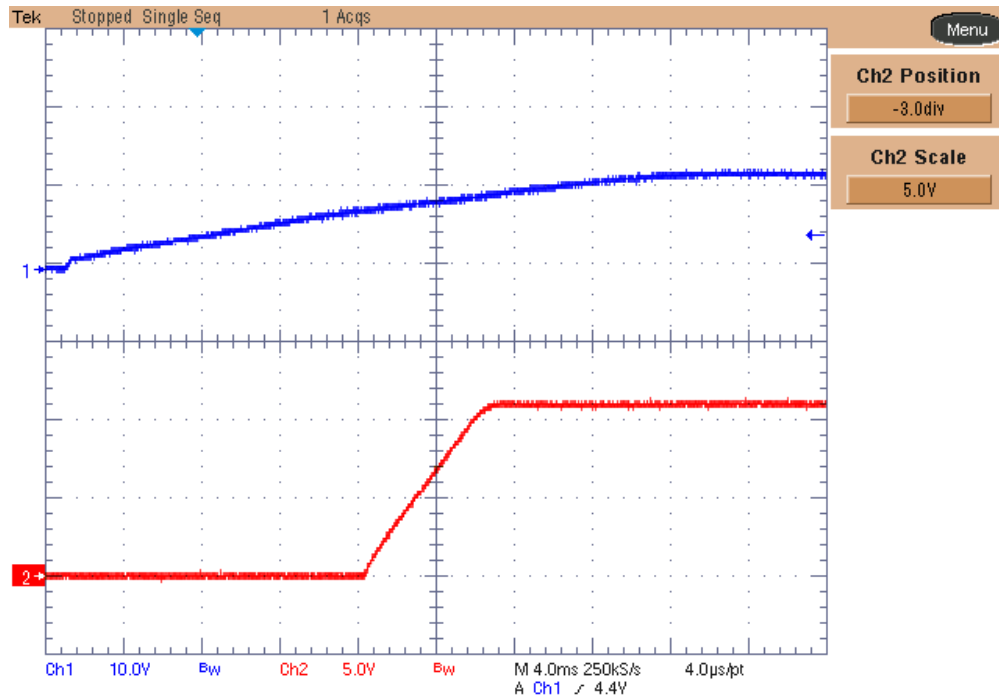
**PHOTO OF THE PROTOTYPE:**



## 1 Startup

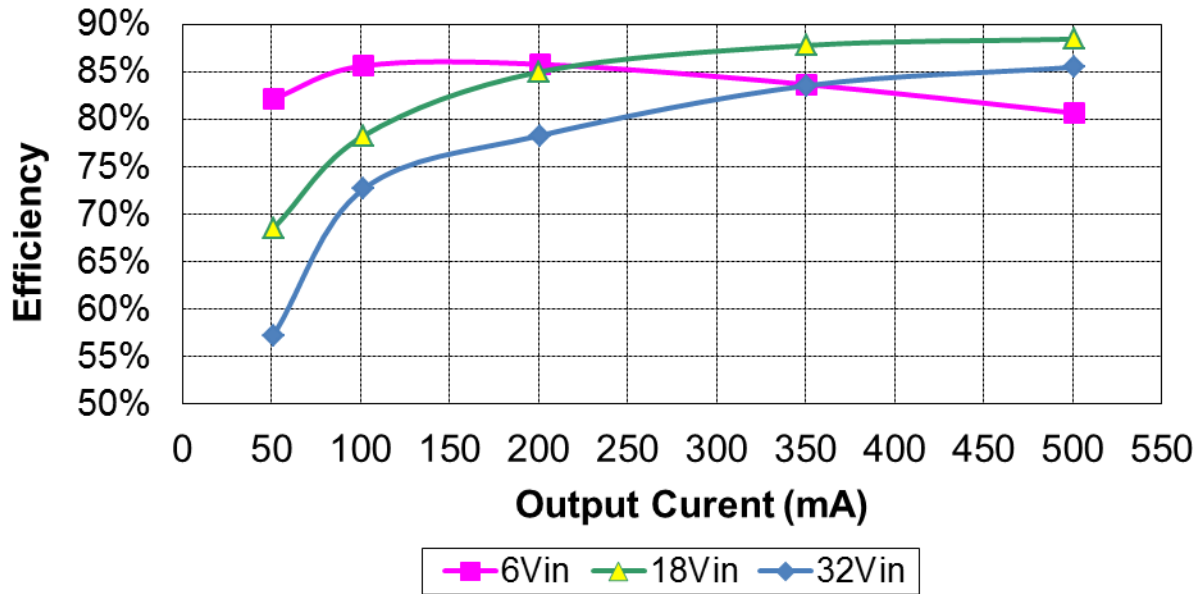
The input (12Vdc) and output voltage behavior at startup is shown in the images below. The output was fully loaded for the top picture and unloaded for the bottom one.

**Ch.1: Input voltage (10V/div, 4ms/div, 20MHz BWL), Ch.2: Output voltage (5V/div, BWL)**



## 2 Efficiency

The efficiency data are shown in the tables and graph below. The dc input source has been set to 6V, 12V and 32V, while the load has been varied between 0 and 500mA.



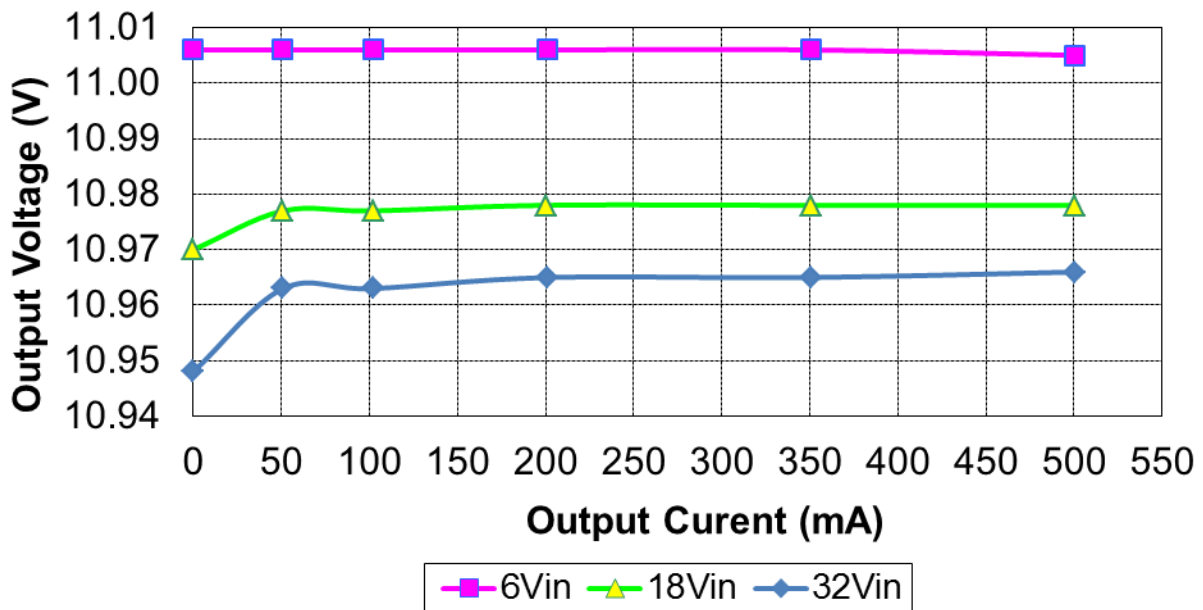
Iout (mA)	Vout (V)	Pout (W)	Iin (mA)	Vin (V)	Pin (W)	Ploss (W)	Eff. (%)
0.0	11.006	0.00	8.2	6.024	0.05	0.05	0.0%
51.0	11.006	0.56	113.8	6.006	0.68	0.12	82.1%
101.9	11.006	1.12	218.1	6.006	1.31	0.19	85.6%
200.7	11.006	2.21	429.2	6.000	2.58	0.37	85.8%
350.5	11.006	3.86	766.4	6.017	4.61	0.75	83.7%
500.6	11.005	5.51	1138.3	6.001	6.83	1.32	80.6%

Iout (mA)	Vout (V)	Pout (W)	Iin (mA)	Vin (V)	Pin (W)	Ploss (W)	Eff. (%)
0.0	10.970	0.00	2.6	18.00	0.05	0.05	0.0%
51.0	10.977	0.56	45.4	18.01	0.82	0.26	68.5%
101.9	10.977	1.12	79.4	18.00	1.43	0.31	78.3%
200.6	10.978	2.20	143.9	18.01	2.59	0.39	85.0%
350.5	10.978	3.85	243.3	18.02	4.38	0.54	87.8%
500.6	10.978	5.50	345.3	18.00	6.22	0.72	88.4%

I <sub>out</sub> (mA)	V <sub>out</sub> (V)	P <sub>out</sub> (W)	I <sub>in</sub> (mA)	V <sub>in</sub> (V)	P <sub>in</sub> (W)	P <sub>loss</sub> (W)	Eff. (%)
0.0	10.948	0.00	3.7	31.97	0.12	0.12	0.0%
51.0	10.963	0.56	30.6	31.96	0.98	0.42	57.2%
101.9	10.963	1.12	48.1	31.96	1.54	0.42	72.7%
200.7	10.965	2.20	88.0	31.95	2.81	0.61	78.3%
350.5	10.965	3.84	144.1	31.93	4.60	0.76	83.5%
500.6	10.966	5.49	201.3	31.91	6.42	0.93	85.5%

### 3 Output voltage regulation vs. load

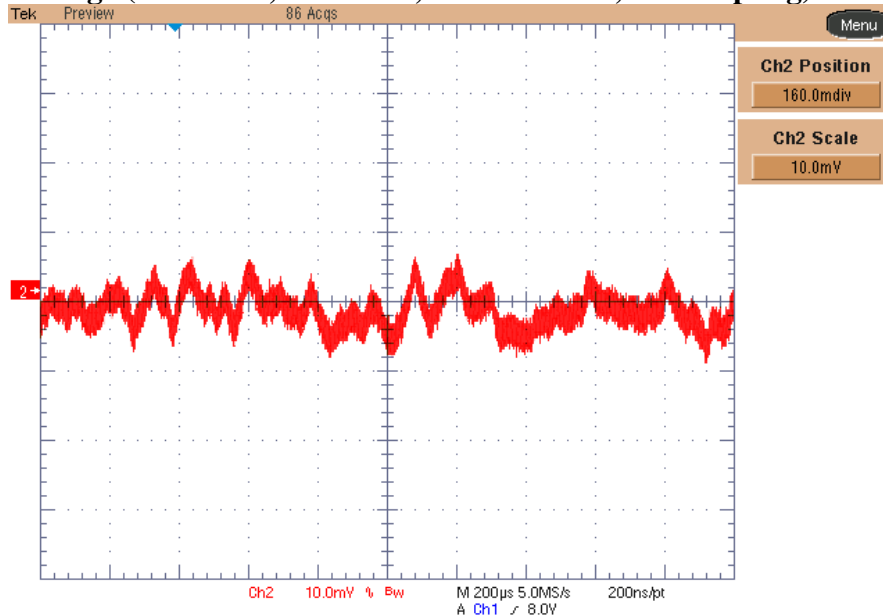
The output voltage variation versus load current, for the three input voltages, is plotted below.



## 4 Output ripple voltage

The output ripple voltage has been measured by supplying the converter @ 12Vdc, while the load has been set to 500mA.

**Ch.2: Output voltage (10mV/div, 200us/div, 20MHz BWL, AC coupling)**

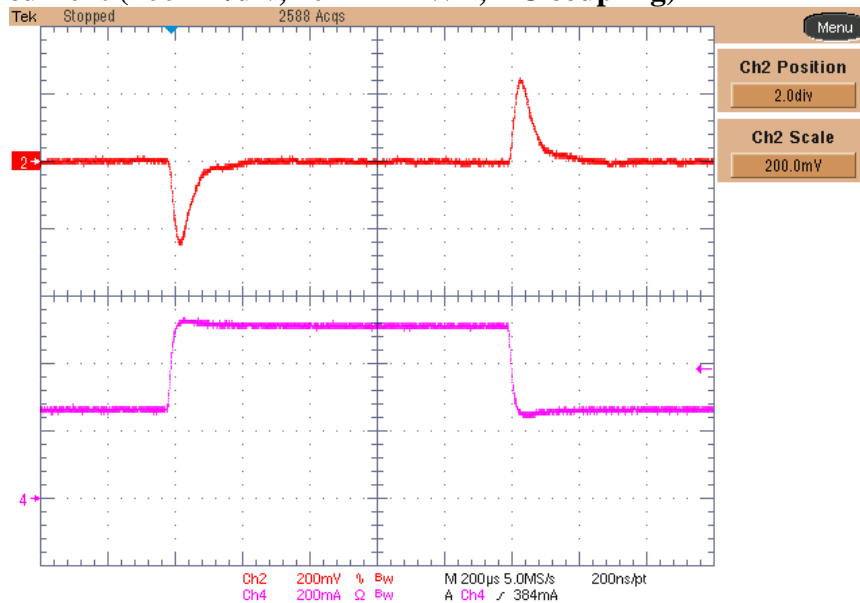


## 5 Load Transient

The image below shows the response of the converter to 50% - 100% (250mA to 500mA) transient on the load, while the converter was supplied @ 12Vdc.

**Ch.2: Output voltage (200mV/div, 200us/div, 20MHz BWL, AC coupling)**

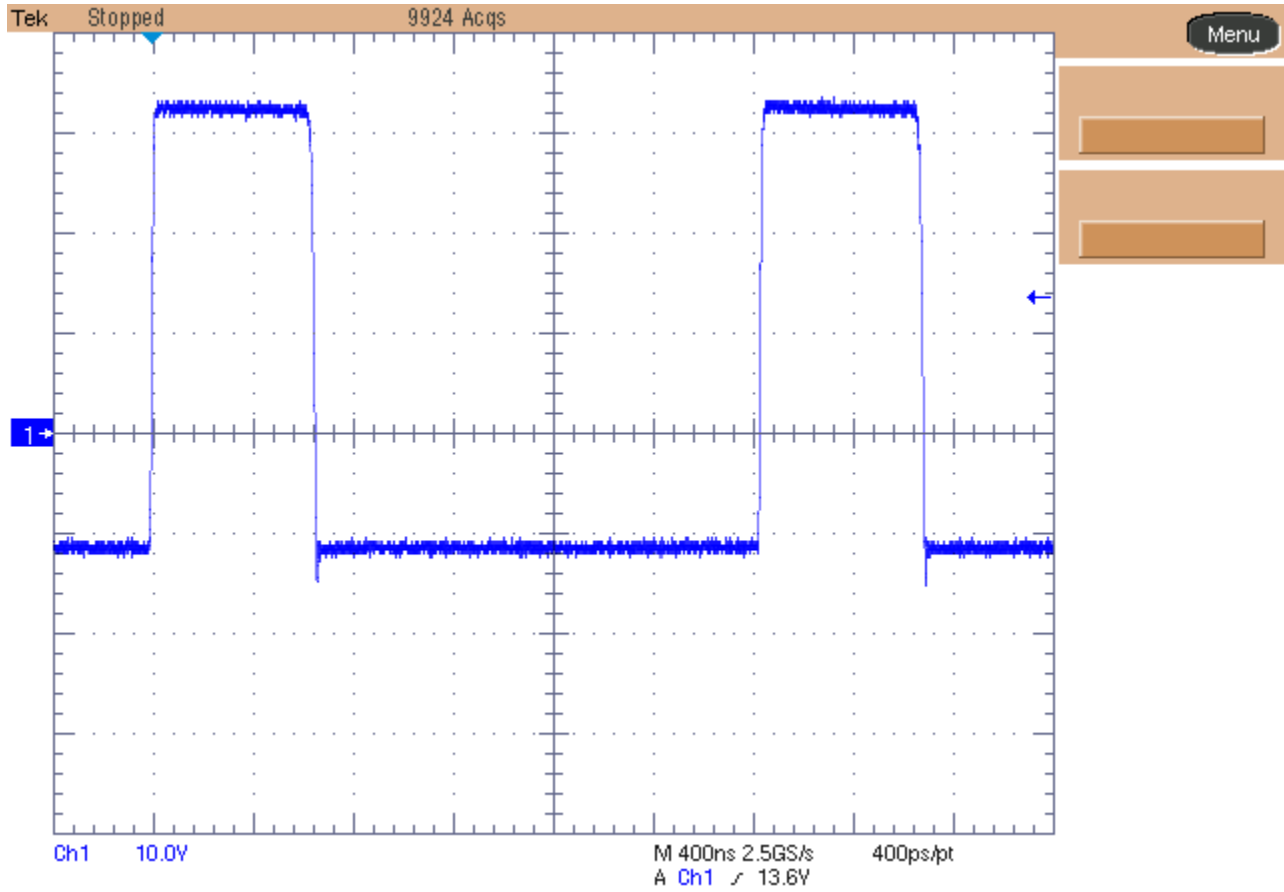
**Ch.4: Output current (200mA/div, 20MHz BWL, DC coupling)**



## 6 Switch-node

The image below shows the switch-node (Q1 drain to ground voltage) waveform at 32Vdc input and full load condition.

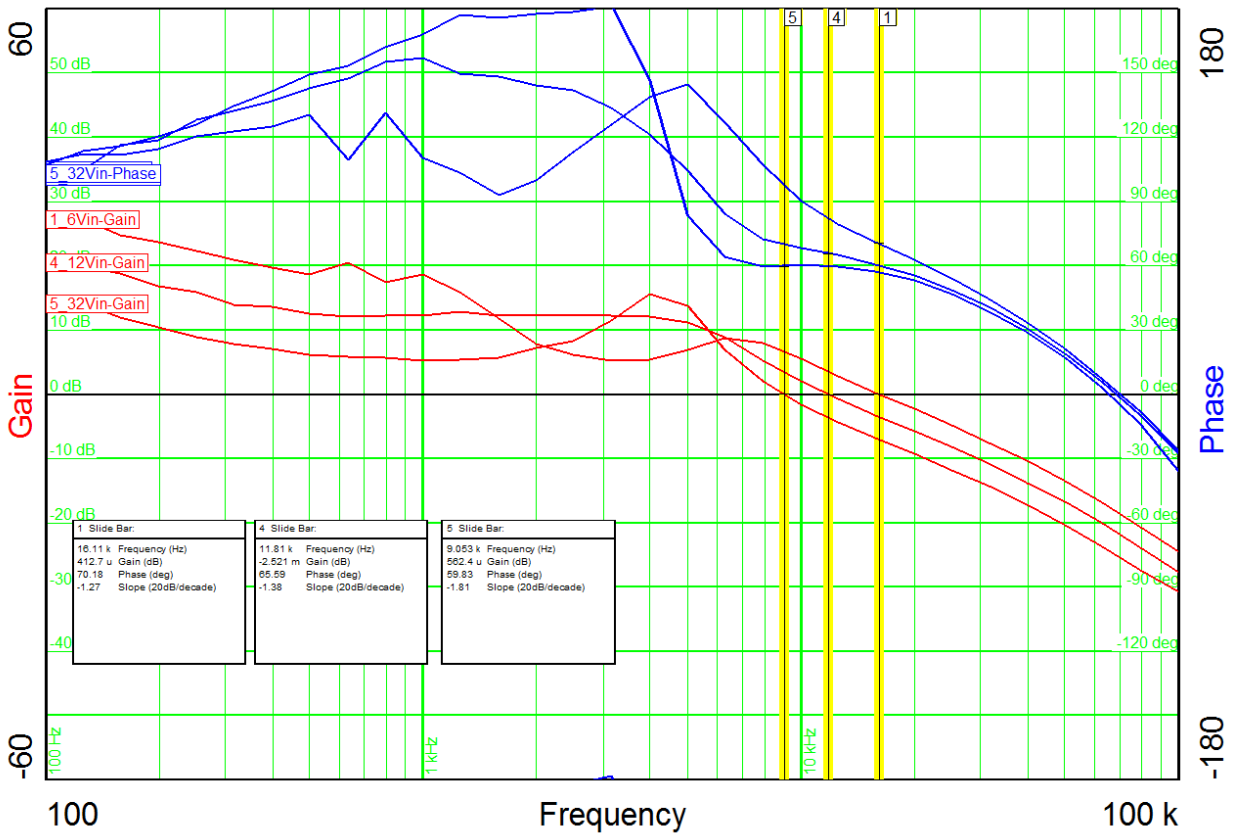
**Ch.1: Q1 Drain-ground voltage (10V/div, 400ns/div, no BWL, DC coupling)**



## 7 Loop Response

The picture below shows the loop response of the converter measured at 6V, 12V and 32V input voltage and full load. Here is in detail the result regarding crossover frequency, phase and gain margin:

Vin	Crossover frequency	Phase Margin	Gain Margin
6V	16.11 KHz	70.18 deg.	18.6 dB
12V	11.81 KHz	65.59 deg.	21.1 dB
32V	9.05 KHz	59.83 deg.	24.29 dB



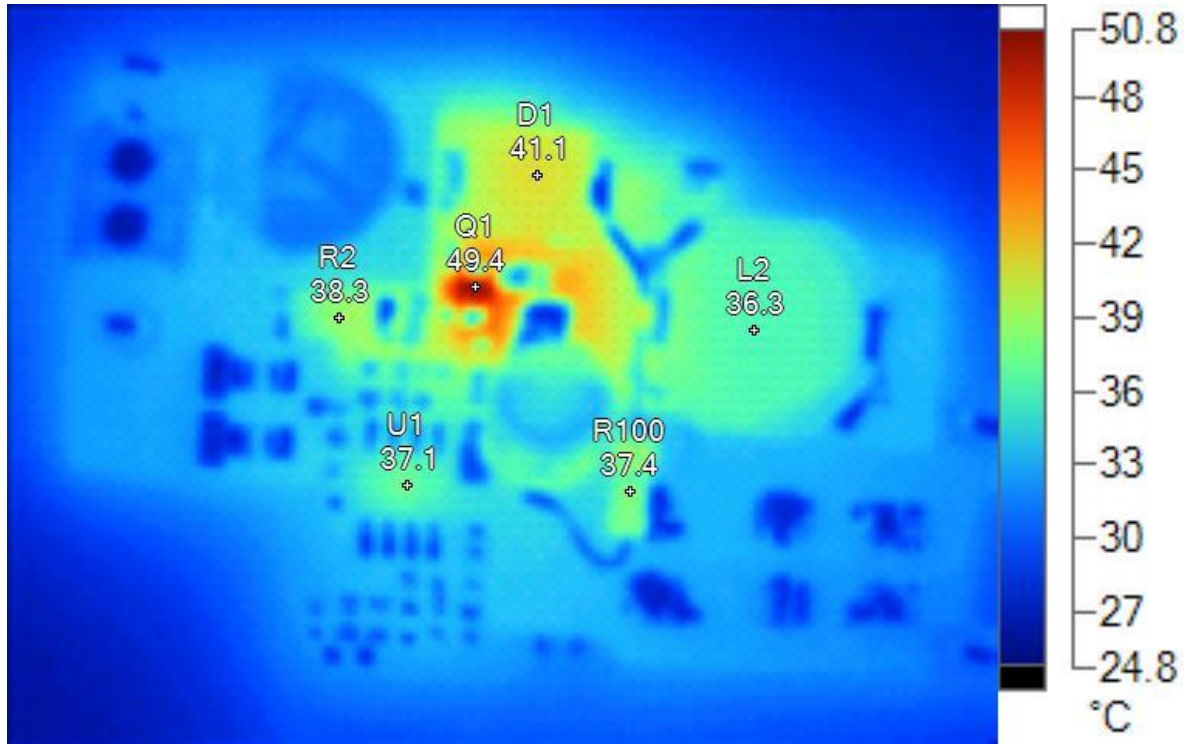


## 8 Thermal Image

The thermal images below show a top and bottom view of the board. The ambient temperature was 24C with no forced air flow.

The output was fully loaded, while the input voltage was set to 8Vdc (worst case condition).

### TOP SIDE:



### Image Info

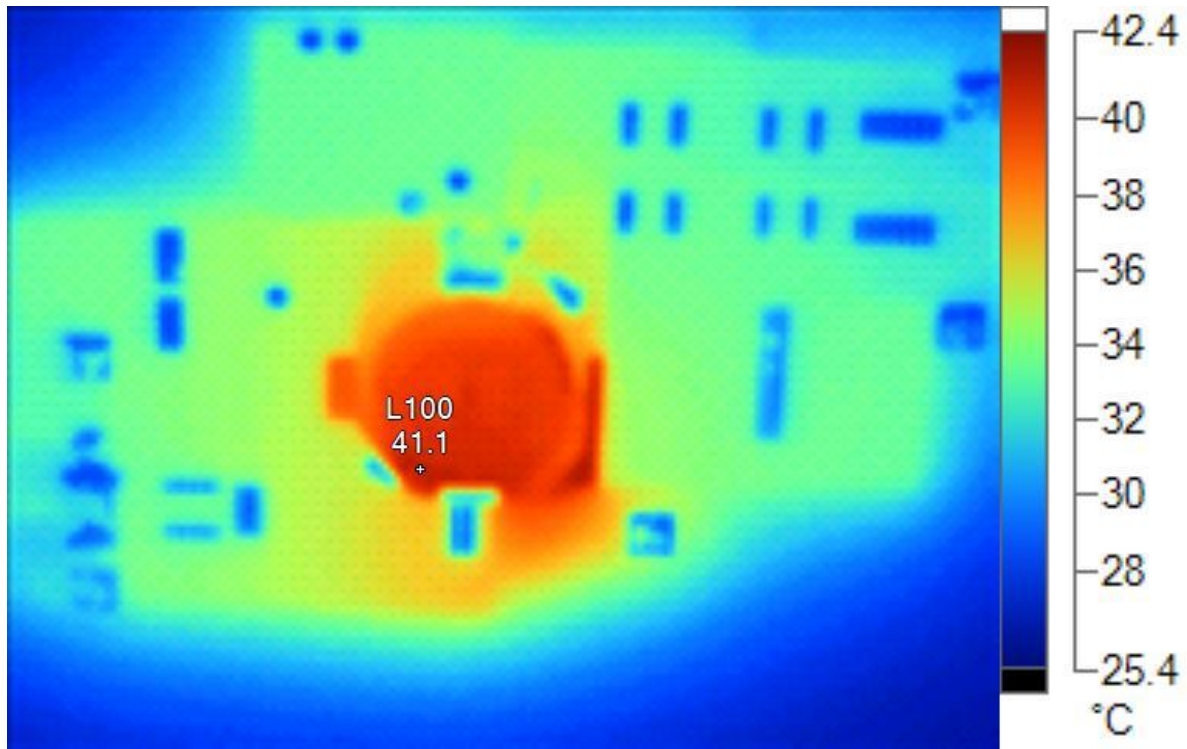
Background temperature	24.0°C
Average Temperature	32.2°C
Image Range	25.5°C to 49.8°C
Camera Model	Ti40FT
Camera Manufacturer	Fluke
Image Time	7/8/2014 11:47:25 AM

### Main Image Markers

Name	Temperature
Q1	49.4°C
U1	37.1°C
R2	38.3°C
D1	41.1°C
L2	36.3°C
R100	37.4°C



**BOTTOM SIDE:**



**Image Info**

Background temperature	24.0°C
Average Temperature	32.5°C
Image Range	25.9°C to 41.4°C
Camera Model	Ti40FT
Camera Manufacturer	Fluke
Image Time	7/8/2014 11:47:57 AM

**Main Image Markers**

Name	Temperature
L100	41.1°C

## IMPORTANT NOTICE AND DISCLAIMER

TI PROVIDES TECHNICAL AND RELIABILITY DATA (INCLUDING DATASHEETS), DESIGN RESOURCES (INCLUDING REFERENCE DESIGNS), APPLICATION OR OTHER DESIGN ADVICE, WEB TOOLS, SAFETY INFORMATION, AND OTHER RESOURCES "AS IS" AND WITH ALL FAULTS, AND DISCLAIMS ALL WARRANTIES, EXPRESS AND IMPLIED, INCLUDING WITHOUT LIMITATION ANY IMPLIED WARRANTIES OF MERCHANTABILITY, FITNESS FOR A PARTICULAR PURPOSE OR NON-INFRINGEMENT OF THIRD PARTY INTELLECTUAL PROPERTY RIGHTS.

These resources are intended for skilled developers designing with TI products. You are solely responsible for (1) selecting the appropriate TI products for your application, (2) designing, validating and testing your application, and (3) ensuring your application meets applicable standards, and any other safety, security, or other requirements. These resources are subject to change without notice. TI grants you permission to use these resources only for development of an application that uses the TI products described in the resource. Other reproduction and display of these resources is prohibited. No license is granted to any other TI intellectual property right or to any third party intellectual property right. TI disclaims responsibility for, and you will fully indemnify TI and its representatives against, any claims, damages, costs, losses, and liabilities arising out of your use of these resources.

TI's products are provided subject to TI's Terms of Sale (<https://www.ti.com/legal/termsofsale.html>) or other applicable terms available either on [ti.com](https://www.ti.com) or provided in conjunction with such TI products. TI's provision of these resources does not expand or otherwise alter TI's applicable warranties or warranty disclaimers for TI products.

Mailing Address: Texas Instruments, Post Office Box 655303, Dallas, Texas 75265  
Copyright © 2021, Texas Instruments Incorporated