

TIDA-00642 Foot controller Using Analog Hall Sensor

Design Overview

TIDA-00642 uses analog Hall Sensor DRV5053 and OpAmp LMV612 to achieve a foot controller circuit with approximate linear response and adjustable quiescent offset and the full scale output range.

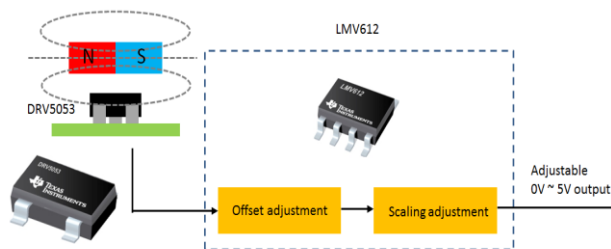
- 0 to 5V full scale output ability
- Adjustable quiescent offset voltage at zero magnet field
- Adjustable wide range system sensitivity
- Low power RRIO amplifier stage
- Cost effective

Design Resources

- [TIDA-00642](#) Design Folder
- [DRV5053](#) Product Folder
- [LMV612](#) Product Folder
- [OpAmp Application Guide](#)

Featured Applications

- Foot controller
- Industrial control stick
- Industrial foot pedal
- Key stroke monitor
- General position or angular sensing



Design Features

- Approximate linear response of the position to output voltage
- Adapt with wide magnet types and range of flux density

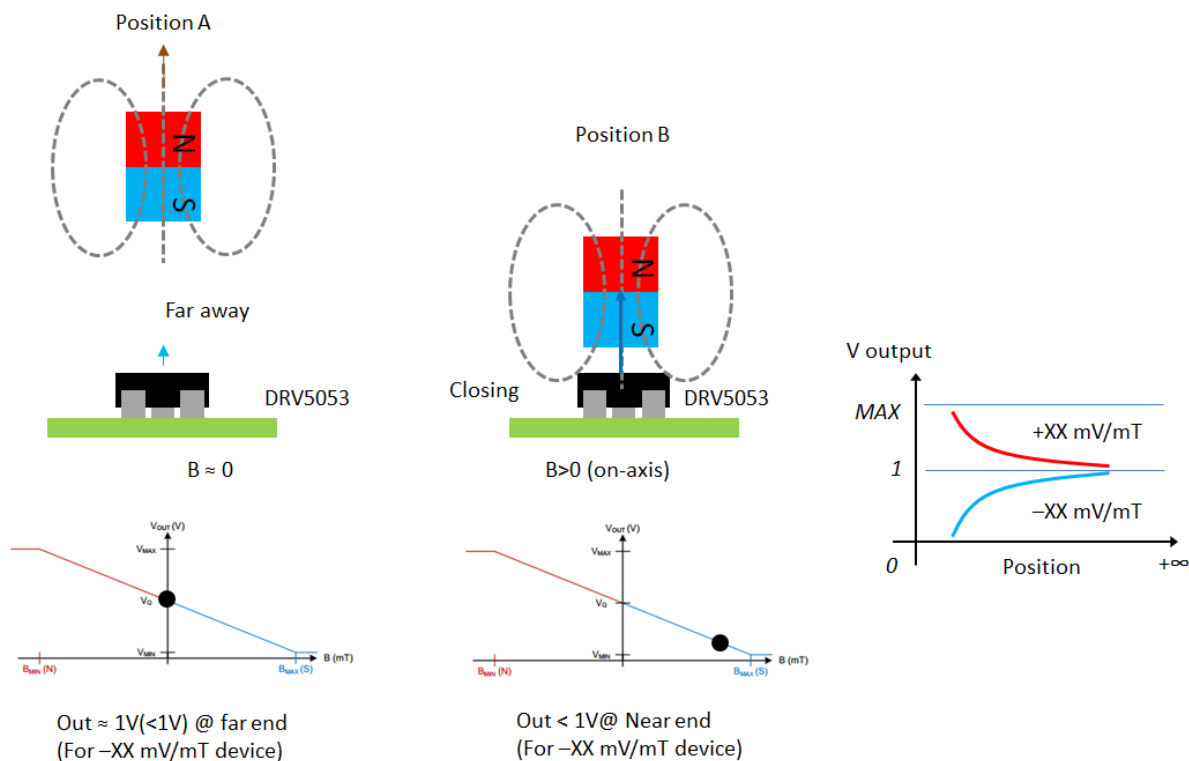


1. Introduction

Analog Hall sensor can be used as position or angular sensing with the benefits of no contact and wearing, high stability and repeat positioning accuracy and wide sensibility range. There are normally two major methods of the configuration of the magnet and the Hall sensor, non-linear and linear way. This design gives introduction of the two methods and focuses on the linear configuration, and gives OpAmp circuit design to achieve wide adaption to different applications.

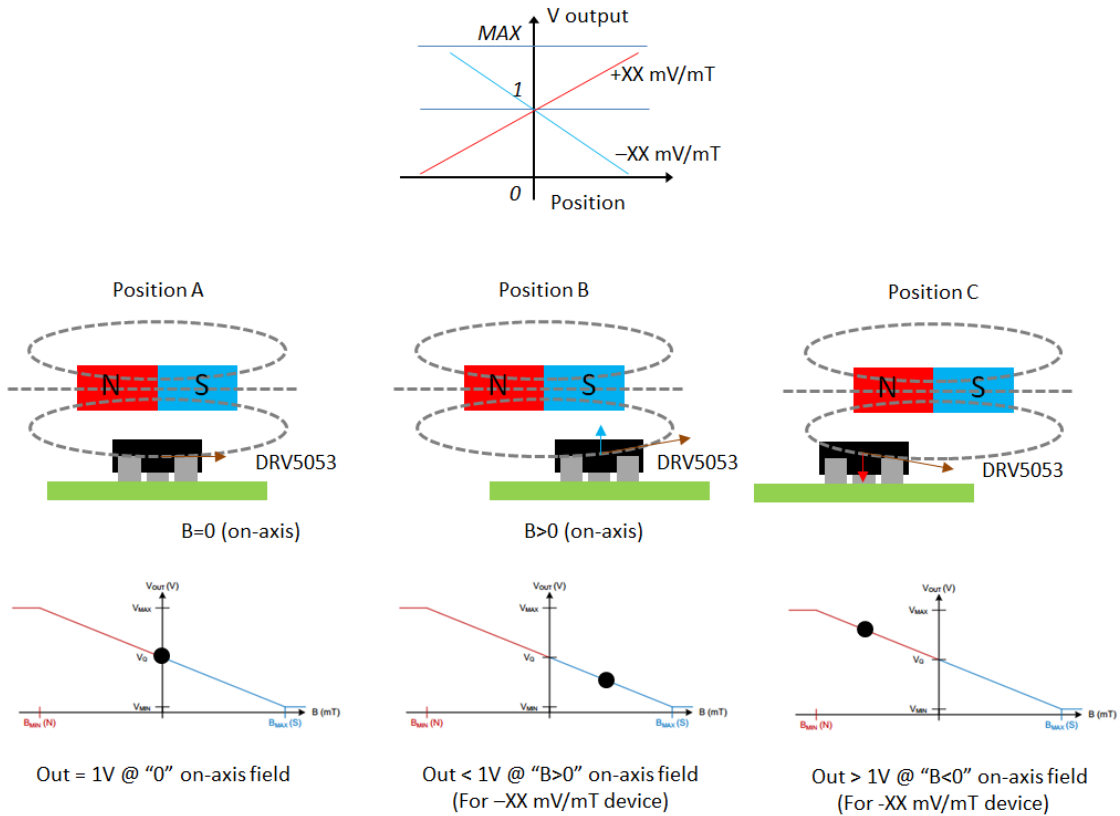
2. Magnet Configuration

The following figures show the two configurations of the magnet and Hall sensor. In non-linear way, the magnet is approaching the Hall sensor with one of its pole. The output is non-linear to the approaching distance. In linear configuration, the Hall sensor is placed at the mid position of the magnet as the quiescent position, no perpendicular flux through the Hall sensor. When the magnet departs from the quiescent position, the output can change two-way up or down depending on the moving direction. With the help of OpAmp stage, both the two configurations can output 0 to 5V continual analog signal. Please refer to **Figure 1** and **Figure 2** for the two configurations.



The magnet and Hall sensor configuration to get non-linear response to the position

Figure 1. Non-linear magnet configuration



The magnet and Hall sensor configuration to get approximate linear response to the position

Figure 2. Linear magnet configuration

3. OpAmp Circuit

The output of DRV5053 is about 0.2V to 1.8V with the quiescent 1V at zero field or no perpendicular flux to the sensing surface. In non-linear configuration, the output range is limited either from 0.2V to 1V or from 1V to 1.8V. An OpAmp stage is introduced in this design. It deals with the raw Hall sensor output signal with adjustable offset and scaling range, shown in **Figure 3**.

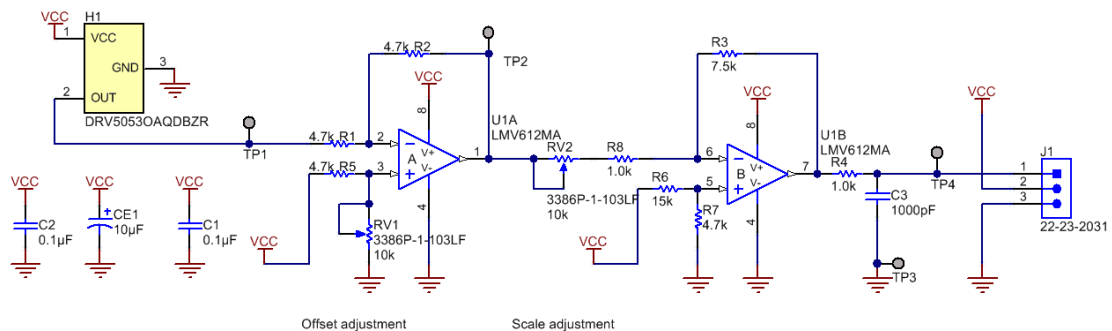


Figure 3. OpAmp stage

A low cost low power RRIO OpAmp LMV612 is used for the condition circuit. U1A is used for offset adjustment. The offset is not defined as only to the quiescent point of DRV5053. Actually any fixed position along the full stroke of the magnet can be set as offset point mechanically. When the relative position of the magnet and Hall sensor is fixed at the designed offset point, the final output voltage can be adjustment by RV1. U1B is used as the amplitude amplifier stage with adjustable gain tuning by RV2. Also there is a RC filter at the final output with R4 and C3.

Basic tuning guide of the system:

1. Tuning RV1 for the designed fixed offset output
2. Place the magnet to its MIN MAX stroke and tuning RV2 to get designed output range
3. Release or return the fixed offset point, back to step 1 readjustment the offset point
4. Back to step 2 to readjustment the offset output
5. Repeat 1 to 4 steps to get both the designed offset the scaled output range.
6. Note that the adjustment range of offset and scaling is also related to the mechanical magnet configuration and the magnetic field. Do possible adjustment of the mechanical configuration if needed.
7. The OpAmp parameters are also adjustable for special sensing range and output coverage. It is recommend to change R5 for extend offset adjustment ability and R3 for extend gain range.

For the detail design and analysis of the OpAmp circuit, please refer to the following application guide.
<http://www.ti.com/lit/an/snla140b/snla140b.pdf>

4. Lab Test Data

The following lab test data is done in a typical sew machine foot controller. The following figure shows the mechanical configuration of the controller box. It is configured in linear way.

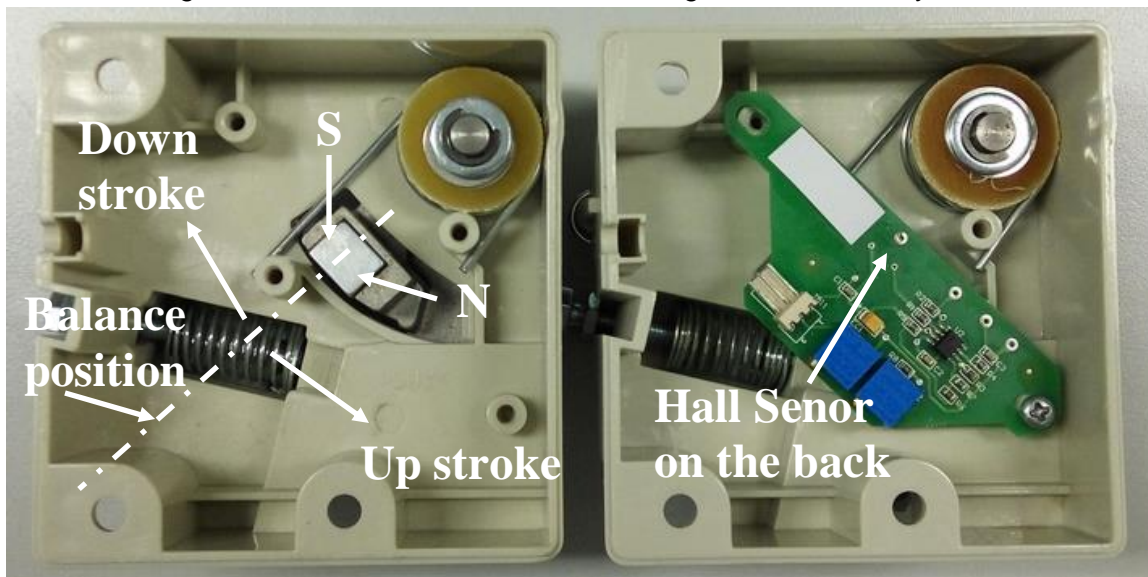
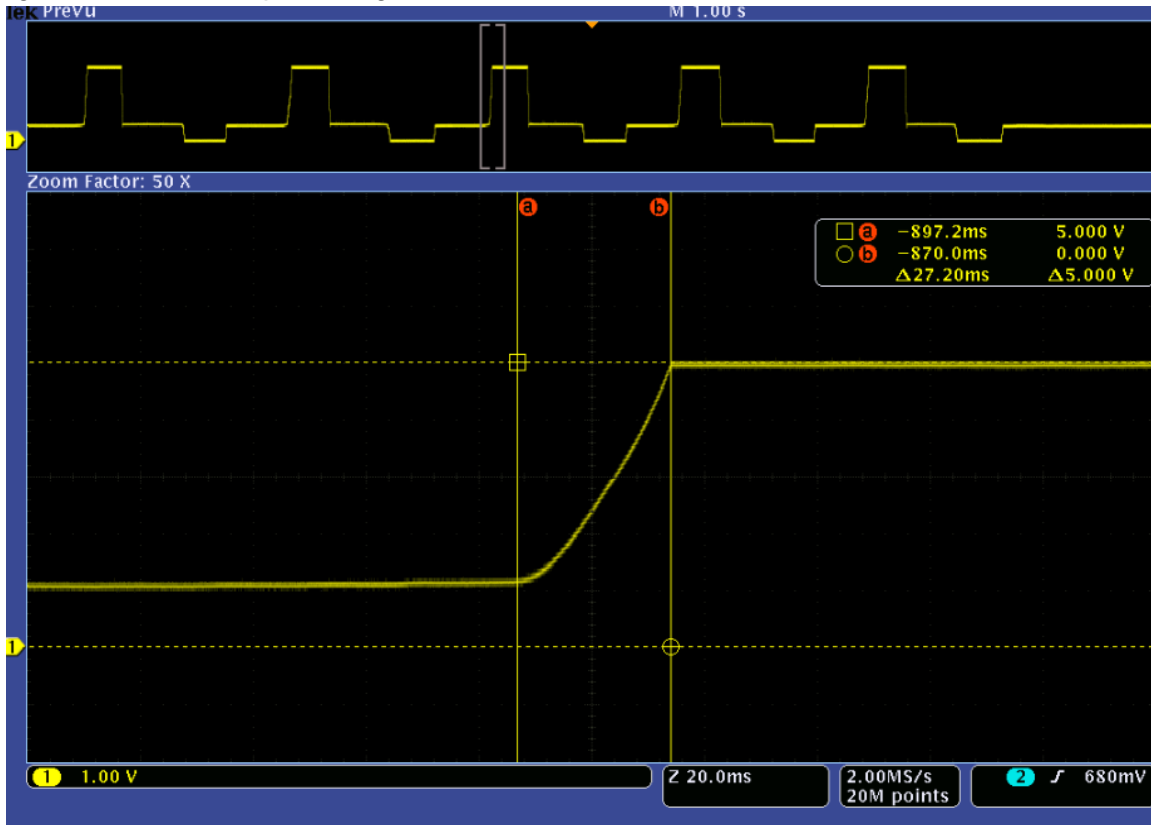


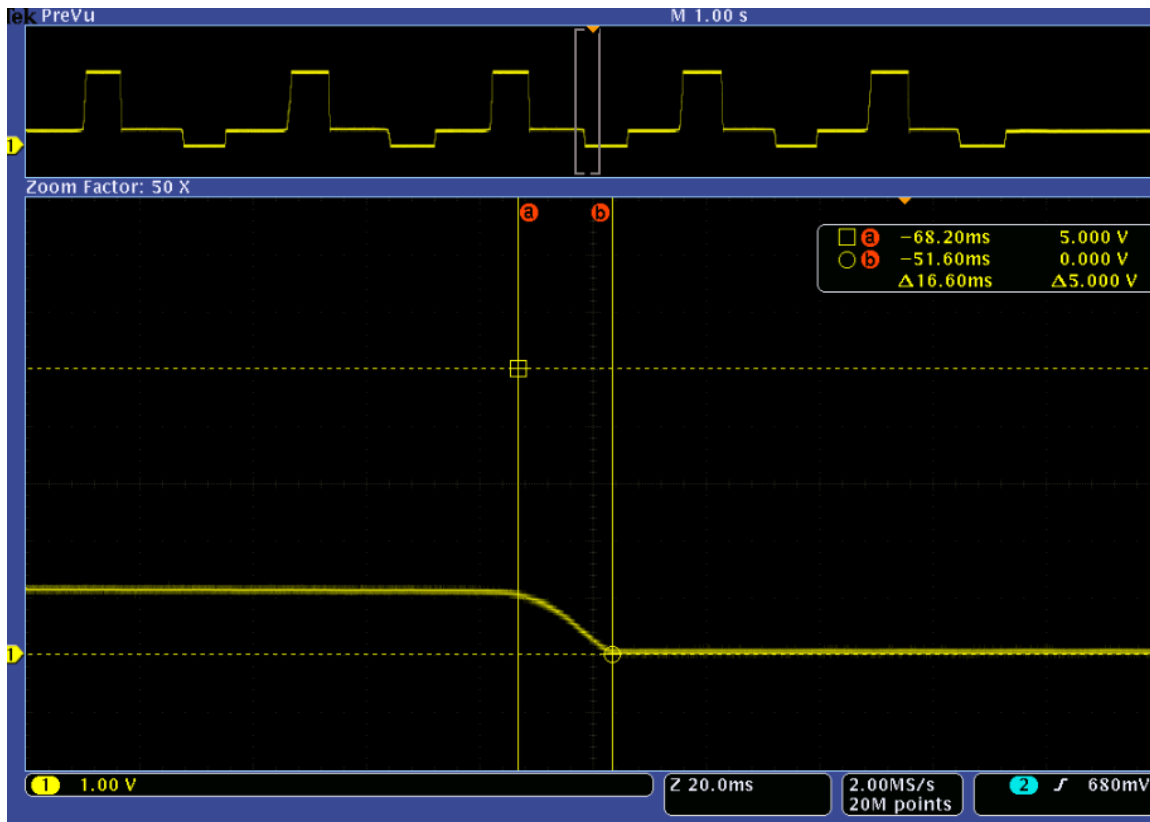
Figure 4. Foot pedal structure

The actuator is fixed at a mid-point between the two ends of the stroke by a dual-spring system. Controlling by the foot, the actuator can go two sides of the stroke direction. The application requires the output stay at about 1.1V when the actuator is at the balanced point (fixed offset point). When the foot strokes downside, the output goes from 1.1V down to ~0V. When the foot strokes upside, the output goes from 1.1V up to ~5V (VCC). This 0 to 5V analog signal will output to the sewing machine control unit and be taken as the speed commands of the spindle.

Below figure shows the output voltage test data.



(a) Up stroke



(b) Down stroke

Figure 5. Output test data example

IMPORTANT NOTICE FOR TI REFERENCE DESIGNS

Texas Instruments Incorporated ("TI") reference designs are solely intended to assist designers ("Buyers") who are developing systems that incorporate TI semiconductor products (also referred to herein as "components"). Buyer understands and agrees that Buyer remains responsible for using its independent analysis, evaluation and judgment in designing Buyer's systems and products.

TI reference designs have been created using standard laboratory conditions and engineering practices. **TI has not conducted any testing other than that specifically described in the published documentation for a particular reference design.** TI may make corrections, enhancements, improvements and other changes to its reference designs.

Buyers are authorized to use TI reference designs with the TI component(s) identified in each particular reference design and to modify the reference design in the development of their end products. HOWEVER, NO OTHER LICENSE, EXPRESS OR IMPLIED, BY ESTOPPEL OR OTHERWISE TO ANY OTHER TI INTELLECTUAL PROPERTY RIGHT, AND NO LICENSE TO ANY THIRD PARTY TECHNOLOGY OR INTELLECTUAL PROPERTY RIGHT, IS GRANTED HEREIN, including but not limited to any patent right, copyright, mask work right, or other intellectual property right relating to any combination, machine, or process in which TI components or services are used. Information published by TI regarding third-party products or services does not constitute a license to use such products or services, or a warranty or endorsement thereof. Use of such information may require a license from a third party under the patents or other intellectual property of the third party, or a license from TI under the patents or other intellectual property of TI.

TI REFERENCE DESIGNS ARE PROVIDED "AS IS". TI MAKES NO WARRANTIES OR REPRESENTATIONS WITH REGARD TO THE REFERENCE DESIGNS OR USE OF THE REFERENCE DESIGNS, EXPRESS, IMPLIED OR STATUTORY, INCLUDING ACCURACY OR COMPLETENESS. TI DISCLAIMS ANY WARRANTY OF TITLE AND ANY IMPLIED WARRANTIES OF MERCHANTABILITY, FITNESS FOR A PARTICULAR PURPOSE, QUIET ENJOYMENT, QUIET POSSESSION, AND NON-INFRINGEMENT OF ANY THIRD PARTY INTELLECTUAL PROPERTY RIGHTS WITH REGARD TO TI REFERENCE DESIGNS OR USE THEREOF. TI SHALL NOT BE LIABLE FOR AND SHALL NOT DEFEND OR INDEMNIFY BUYERS AGAINST ANY THIRD PARTY INFRINGEMENT CLAIM THAT RELATES TO OR IS BASED ON A COMBINATION OF COMPONENTS PROVIDED IN A TI REFERENCE DESIGN. IN NO EVENT SHALL TI BE LIABLE FOR ANY ACTUAL, SPECIAL, INCIDENTAL, CONSEQUENTIAL OR INDIRECT DAMAGES, HOWEVER CAUSED, ON ANY THEORY OF LIABILITY AND WHETHER OR NOT TI HAS BEEN ADVISED OF THE POSSIBILITY OF SUCH DAMAGES, ARISING IN ANY WAY OUT OF TI REFERENCE DESIGNS OR BUYER'S USE OF TI REFERENCE DESIGNS.

TI reserves the right to make corrections, enhancements, improvements and other changes to its semiconductor products and services per JESD46, latest issue, and to discontinue any product or service per JESD48, latest issue. Buyers should obtain the latest relevant information before placing orders and should verify that such information is current and complete. All semiconductor products are sold subject to TI's terms and conditions of sale supplied at the time of order acknowledgment.

TI warrants performance of its components to the specifications applicable at the time of sale, in accordance with the warranty in TI's terms and conditions of sale of semiconductor products. Testing and other quality control techniques for TI components are used to the extent TI deems necessary to support this warranty. Except where mandated by applicable law, testing of all parameters of each component is not necessarily performed.

TI assumes no liability for applications assistance or the design of Buyers' products. Buyers are responsible for their products and applications using TI components. To minimize the risks associated with Buyers' products and applications, Buyers should provide adequate design and operating safeguards.

Reproduction of significant portions of TI information in TI data books, data sheets or reference designs is permissible only if reproduction is without alteration and is accompanied by all associated warranties, conditions, limitations, and notices. TI is not responsible or liable for such altered documentation. Information of third parties may be subject to additional restrictions.

Buyer acknowledges and agrees that it is solely responsible for compliance with all legal, regulatory and safety-related requirements concerning its products, and any use of TI components in its applications, notwithstanding any applications-related information or support that may be provided by TI. Buyer represents and agrees that it has all the necessary expertise to create and implement safeguards that anticipate dangerous failures, monitor failures and their consequences, lessen the likelihood of dangerous failures and take appropriate remedial actions. Buyer will fully indemnify TI and its representatives against any damages arising out of the use of any TI components in Buyer's safety-critical applications.

In some cases, TI components may be promoted specifically to facilitate safety-related applications. With such components, TI's goal is to help enable customers to design and create their own end-product solutions that meet applicable functional safety standards and requirements. Nonetheless, such components are subject to these terms.

No TI components are authorized for use in FDA Class III (or similar life-critical medical equipment) unless authorized officers of the parties have executed an agreement specifically governing such use.

Only those TI components that TI has specifically designated as military grade or "enhanced plastic" are designed and intended for use in military/aerospace applications or environments. Buyer acknowledges and agrees that any military or aerospace use of TI components that have **not** been so designated is solely at Buyer's risk, and Buyer is solely responsible for compliance with all legal and regulatory requirements in connection with such use.

TI has specifically designated certain components as meeting ISO/TS16949 requirements, mainly for automotive use. In any case of use of non-designated products, TI will not be responsible for any failure to meet ISO/TS16949.