

PMP 9769 - Automotive E-Call Power Supply Reference Design with Low Intermediate Voltage

Emergency call devices (e-call) for automotive need to be powered reliably during the complete phase of the emergency call. In an emergency situation which requires the emergency call in a car, the car may have been severely damaged including a breakdown of the car battery supply. For this reason usually an integrated backup power solution is required. This reference design shows a complete power solution for such an e-call application including the backup power. It uses a battery configuration with a maximum terminal voltage of less than 5 V for backup power. For providing power to all required circuit blocks it uses suitable switching regulators. It also manages seamless transition from main to backup power and back during all possible power conditions in the car. Charging the backup battery is included as well.

1 Overview

For regulating the supply voltage for the required circuit blocks and for interfacing with the high voltage of the main car battery rail, switchmode power supplies are used. [Figure 1](#) shows the structure of the circuit. At normal conditions the system is supplied from the main car battery rail which supplies the LM43603 step down converter. This step down converter generates a 5 V system rail which is switched through a power path control block to generate the system rail. All regulators supplying the individual circuit blocks are connected to this system rail. During backup operation the power path control block switches the backup battery to the system rail. Depending on the battery type and the state of charge of the battery, it is expected that the system voltage during backup operation can vary between 2.5 V and 4.2 V. The regulated 5-V input and the backup system voltage range defines the topology for all regulators supplying the individual circuit blocks. To keep the solution size small and to avoid interference with other systems in the car, the switching converters are selected to be capable to operate at switching frequencies above 2 MHz at nominal load conditions.

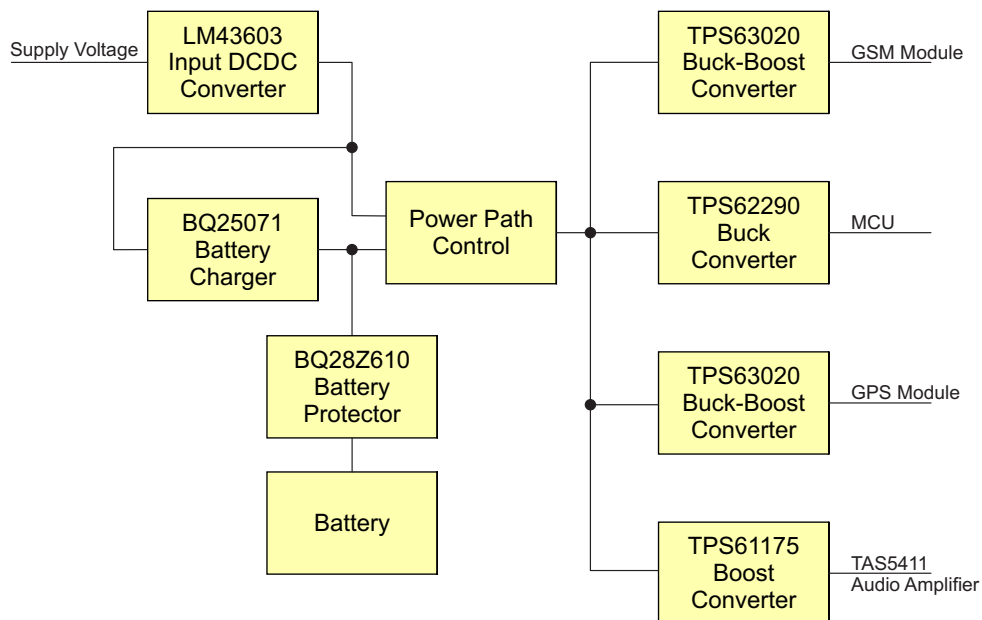


Figure 1. Block Diagram

2 Measurements

As shown in [Figure 1](#) the functional blocks of the system are supplied with 4 dedicated regulators. For the GSM module a supply voltage of 3.8 V is needed. This requires buck boost conversion, so TPS63020 is selected for this rail. The MCU and the related logic components which are used to control the system require 1.8 V. This only needs a step down converter like the TPS62290 which is selected here. For the 5 V required for the GPS or GLONASS system the TPS63020 is used in boost only operation. The audio amplifier TAS5411 is supplied with 9 V. This requires a boost only converter like the TPS61175 which is used here.

Most of the converters operate at switching frequencies above 2 MHz by default and the frequency cannot be adjusted. For the converters which allow programming the switching frequency, frequencies above 2 MHz are selected. Details on how to configure the features of the individual devices in this circuit can be found in their respective datasheet ([TPS63020](#), [TPS62290](#), [TPS61175](#), [TAS5411](#)).

The peak load expected for the GSM module is 2 A with a duty cycle of 25%. All other rails are designed for maximum 1 A. All power measurements have been done at a nominal average load current. Nominal average load current for the testing of the GSM rail is 0.5 A, for the MCU rail 0.5 A, for the GPS rail 0.8 A and for the audio amplifier 0.5 A. Standby operation is defined with each of the rails operating at 10% of their maximum output power.

The measurements documented in this report are captured at the defined nominal load condition and at the defined standby load condition.

2.1 Total Efficiency

[Table 1](#) shows the efficiency of the total solution at the defined nominal average output conditions. The input currents are measured for operation from the main input supply and for operation from the backup battery. Since operating from the main input supply is a using a 2 stage power conversion the efficiency at that condition is significantly lower.

Table 1. Efficiency at Nominal Load

Voltage Rail	Voltage [V]	Current [A]	Power [W]
Main Input (normal operation)	14.0	1.13	15.77
Battery Input (backup operation)	3.5	3.71	13.00
GSM Module	3.8	0.50	1.90
MCU and Logic	1.8	0.50	0.90
GPS Module	5.0	0.80	4.00
Audio Amplifier	9.0	0.50	4.50
Efficiency			
Main input operation		72%	
Battery operation		87%	

[Table 2](#) shows the efficiency of the total solution at the defined standby average output conditions. The input currents are measured for operation from the main input supply and for operation from the backup battery. Since operating from the main input supply is a using a 2 stage power conversion the efficiency at that condition is significantly lower as well in standby operation.

Table 2. Efficiency at Standby Load

Voltage Rail	Voltage [V]	Current [A]	Power [W]
Main Input (normal operation)	14.0	0.23	3.16
Battery Input (backup operation)	3.5	0.75	2.61
GSM Module	3.8	0.20	0.76
MCU and Logic	1.8	0.10	0.18
GPS Module	5.0	0.10	0.50
Audio Amplifier	9.0	0.10	0.90

Table 2. Efficiency at Standby Load (continued)

Voltage Rail	Voltage [V]	Current [A]	Power [W]
Efficiency			
Main input operation		74%	
Battery operation		90%	

2.2 Functional Power Blocks

In this section measurement results for the individual converters are shown which are specific for this implementation. Since the converters are configured very similar to their default recommended configuration standard performance measurements like for example DC regulation, efficiency at various line and load conditions and typical load transient measurements are not repeated here. They can be found in the individual datasheets of the converters ([TPS63020](#), [TPS62290](#), [TPS61175](#), [TAS5411](#)).

2.2.1 Input DCDC Converter

The efficiency numbers shown in [Table 1](#) and [Table 2](#) for main input operation are measured with the input DCDC converter, the LM43603, configured to operate at 2 MHz. Due to the wide input voltage range this converter can operate, the self heating of this converter can be significant. [Figure 2](#) shows the temperature distribution around this converter at room temperature.

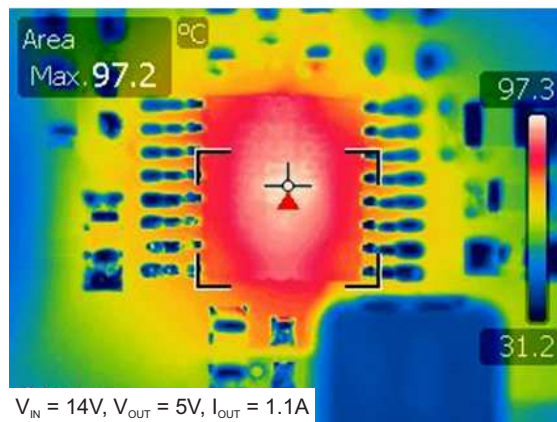


Figure 2. Input DCDC Converter Temperature Distribution

To lower the temperatures around this converter the switching losses can be reduced by decreasing the switching frequency. [Figure 3](#) shows the temperature distribution around the converter at room temperature when operating at 700 kHz switching frequency.

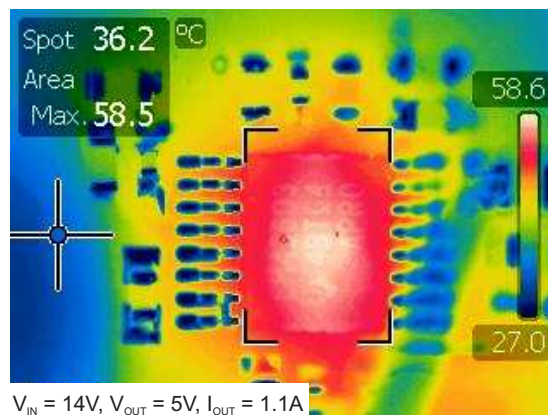


Figure 3. Input DCDC Converter Temperature Distribution

It is obvious in [Figure 3](#) that the lower switching frequency caused a significant reduction of the losses in this converter. This also means that the efficiency of the total solution has increased when operating at the main input power.

[Table 3](#) and [Table 4](#) show the measurement data for the 700-kHz operation. Although the efficiency at main input power operation has significantly increased, due to the single stage conversion the efficiency at backup operation still is higher.

Table 3. Efficiency at Nominal Load

Voltage Rail	Voltage [V]	Current [A]	Power [W]
Main Input (normal operation)	14.0	1.01	14.08
Battery Input (backup operation)	3.5	3.71	13.00
GSM Module	3.8	0.50	1.90
MCU and Logic	1.8	0.50	0.90
GPS Module	5.0	0.80	4.00
Audio Amplifier	9.0	0.50	4.50
Efficiency			
Main input operation			80%
Battery operation			87%

Table 4. Efficiency at Standby Load

Voltage Rail	Voltage [V]	Current [A]	Power [W]
Main Input (normal operation)	14.0	0.20	2.82
Battery Input (backup operation)	3.5	0.75	2.61
GSM Module	3.8	0.20	0.76
MCU and Logic	1.8	0.10	0.18
GPS Module	5.0	0.10	0.50
Audio Amplifier	9.0	0.10	0.90
Efficiency			
Main input operation			83%
Battery operation			90%

2.2.2 Power Path Control

[Figure 4](#) shows all supply voltage rails during a transition from the main input supply rail to backup supply and back. At main input supply operation the intermediate voltage used to supply the system is regulated to 5 V. When the main power is disconnected the intermediate voltage drops to the backup battery voltage. Since the backup battery is discharging the voltage is decreasing over time. As soon as the main power is back the intermediate voltage is again generated by the input step down regulator.

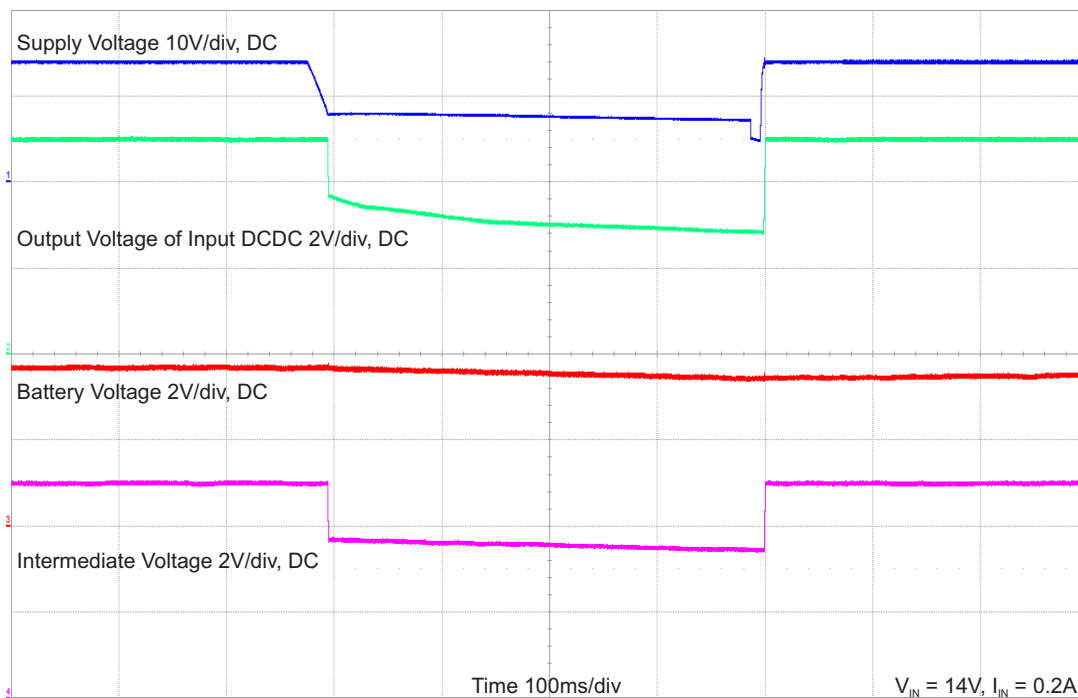


Figure 4. Power Path Control

2.2.3 Modem Supply

Figure 5 shows voltage and current waveforms related to the operation of the modem. The test condition here is a load current pulse of 2 A for 500 ms which is considered worst case for GSM communication. The high current pulses can be supplied by the buck-boost converter which is used here. The waveforms of inductor current and output voltage show the control performance of this solution and the waveform of the intermediate voltage shows the impact on the intermediate voltage which is supplying the converter.

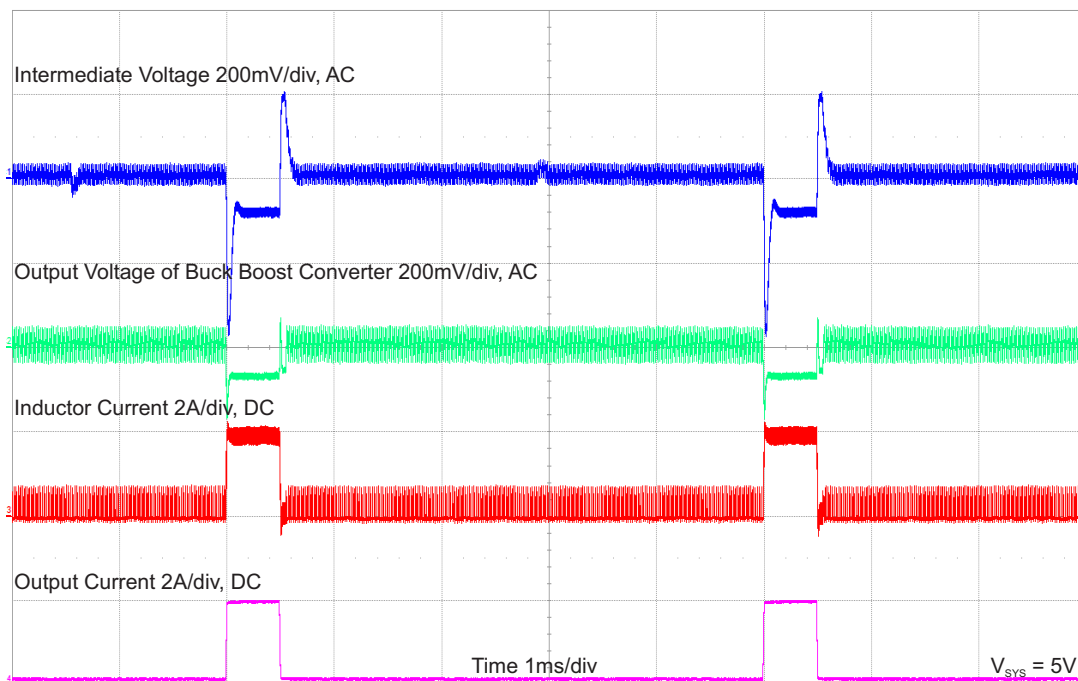


Figure 5. Modem Power Supply

2.2.4 Audio Supply

Figure 6 shows voltage and current waveforms related to the operation of the supply of the audio amplifier. The audio amplifier was operated with a test signal with a frequency of 2 kHz at a load of 8.7 Ω .

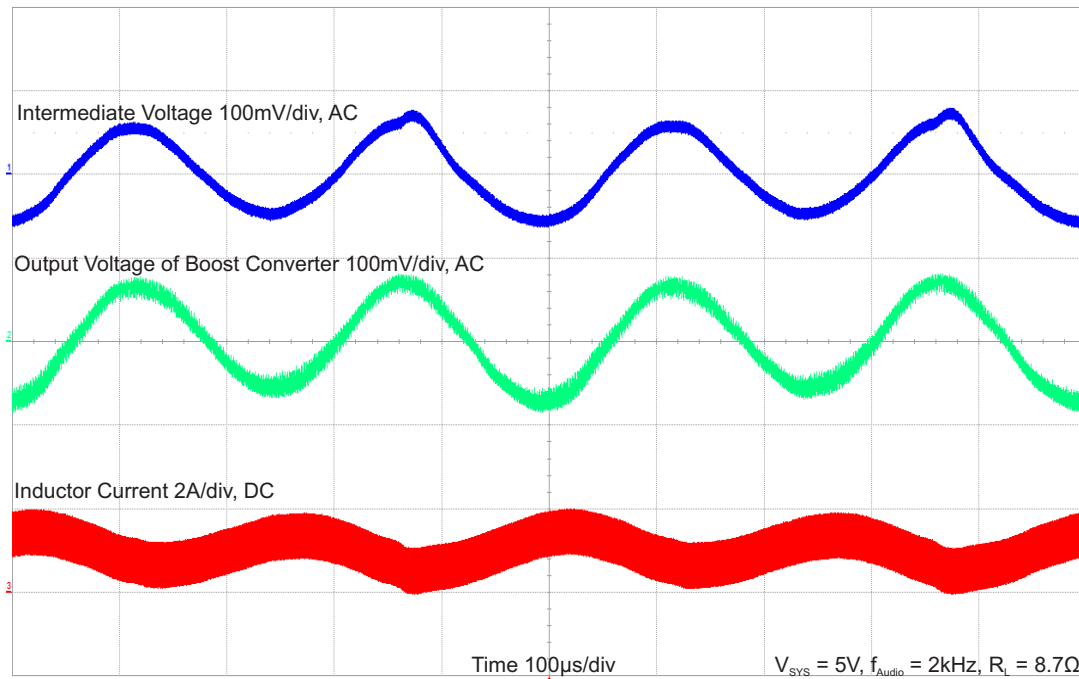


Figure 6. Audio Power Supply

IMPORTANT NOTICE

Texas Instruments Incorporated and its subsidiaries (TI) reserve the right to make corrections, enhancements, improvements and other changes to its semiconductor products and services per JESD46, latest issue, and to discontinue any product or service per JESD48, latest issue. Buyers should obtain the latest relevant information before placing orders and should verify that such information is current and complete. All semiconductor products (also referred to herein as "components") are sold subject to TI's terms and conditions of sale supplied at the time of order acknowledgment.

TI warrants performance of its components to the specifications applicable at the time of sale, in accordance with the warranty in TI's terms and conditions of sale of semiconductor products. Testing and other quality control techniques are used to the extent TI deems necessary to support this warranty. Except where mandated by applicable law, testing of all parameters of each component is not necessarily performed.

TI assumes no liability for applications assistance or the design of Buyers' products. Buyers are responsible for their products and applications using TI components. To minimize the risks associated with Buyers' products and applications, Buyers should provide adequate design and operating safeguards.

TI does not warrant or represent that any license, either express or implied, is granted under any patent right, copyright, mask work right, or other intellectual property right relating to any combination, machine, or process in which TI components or services are used. Information published by TI regarding third-party products or services does not constitute a license to use such products or services or a warranty or endorsement thereof. Use of such information may require a license from a third party under the patents or other intellectual property of the third party, or a license from TI under the patents or other intellectual property of TI.

Reproduction of significant portions of TI information in TI data books or data sheets is permissible only if reproduction is without alteration and is accompanied by all associated warranties, conditions, limitations, and notices. TI is not responsible or liable for such altered documentation. Information of third parties may be subject to additional restrictions.

Resale of TI components or services with statements different from or beyond the parameters stated by TI for that component or service voids all express and any implied warranties for the associated TI component or service and is an unfair and deceptive business practice. TI is not responsible or liable for any such statements.

Buyer acknowledges and agrees that it is solely responsible for compliance with all legal, regulatory and safety-related requirements concerning its products, and any use of TI components in its applications, notwithstanding any applications-related information or support that may be provided by TI. Buyer represents and agrees that it has all the necessary expertise to create and implement safeguards which anticipate dangerous consequences of failures, monitor failures and their consequences, lessen the likelihood of failures that might cause harm and take appropriate remedial actions. Buyer will fully indemnify TI and its representatives against any damages arising out of the use of any TI components in safety-critical applications.

In some cases, TI components may be promoted specifically to facilitate safety-related applications. With such components, TI's goal is to help enable customers to design and create their own end-product solutions that meet applicable functional safety standards and requirements. Nonetheless, such components are subject to these terms.

No TI components are authorized for use in FDA Class III (or similar life-critical medical equipment) unless authorized officers of the parties have executed a special agreement specifically governing such use.

Only those TI components which TI has specifically designated as military grade or "enhanced plastic" are designed and intended for use in military/aerospace applications or environments. Buyer acknowledges and agrees that any military or aerospace use of TI components which have **not** been so designated is solely at the Buyer's risk, and that Buyer is solely responsible for compliance with all legal and regulatory requirements in connection with such use.

TI has specifically designated certain components as meeting ISO/TS16949 requirements, mainly for automotive use. In any case of use of non-designated products, TI will not be responsible for any failure to meet ISO/TS16949.

Products

Audio	www.ti.com/audio
Amplifiers	amplifier.ti.com
Data Converters	dataconverter.ti.com
DLP® Products	www.dlp.com
DSP	dsp.ti.com
Clocks and Timers	www.ti.com/clocks
Interface	interface.ti.com
Logic	logic.ti.com
Power Mgmt	power.ti.com
Microcontrollers	microcontroller.ti.com
RFID	www.ti-rfid.com
OMAP Applications Processors	www.ti.com/omap
Wireless Connectivity	www.ti.com/wirelessconnectivity

Applications

Automotive and Transportation	www.ti.com/automotive
Communications and Telecom	www.ti.com/communications
Computers and Peripherals	www.ti.com/computers
Consumer Electronics	www.ti.com/consumer-apps
Energy and Lighting	www.ti.com/energy
Industrial	www.ti.com/industrial
Medical	www.ti.com/medical
Security	www.ti.com/security
Space, Avionics and Defense	www.ti.com/space-avionics-defense
Video and Imaging	www.ti.com/video

TI E2E Community

e2e.ti.com