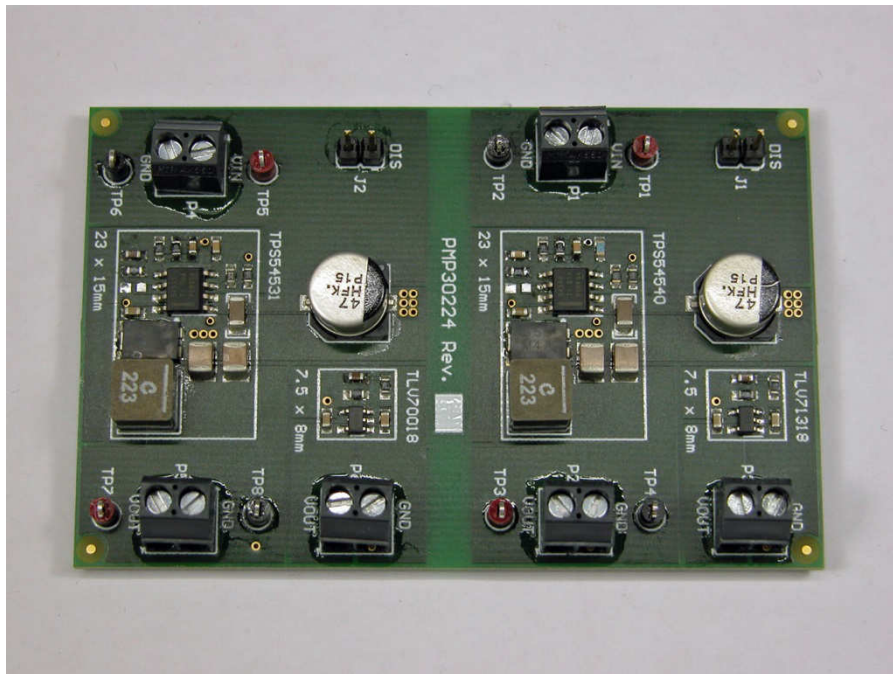


## TAS2555 Power Supply Solution

- Input            TPS54540:     5.0 .. 38.0V  
                     TPS54531:     5.0 .. 26.0V
- Output           5.0V @ 1.0A / 5.0A peak (TPS54540, TPS54531)  
                     1.8V @ 0.075A (TLV71318, TLV70018)
- Free-Running-Switching Frequency of 570 kHz



## 1. Startup – TPS54540

The startup waveform at 12.0V input voltage and no load on the outputs is shown in Figure 1.

- Channel C1    **12.0V Input Voltage**  
2V/div, 5ms/div
- Channel C2    **5.0V Output Voltage**  
1V/div, 5ms/div
- Channel C3    **1.8V Output Voltage**  
1V/div, 5ms/div

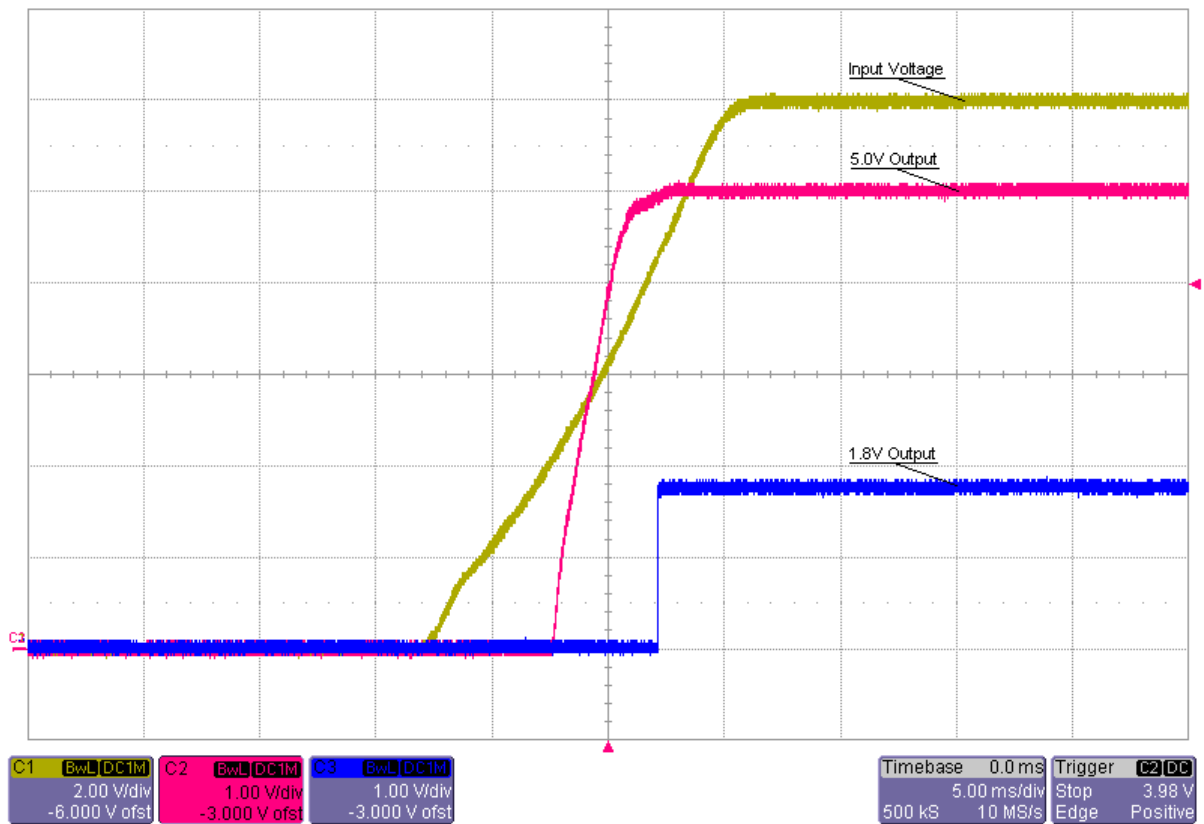


Figure 1

## 2. Shutdown – TPS54540

The shutdown waveform at 12.0V input voltage and 1.0V load on the 5.0V output and 0.075mA load on the 1.8V output are shown in Figure 2.

Channel C1     **12.0V Input Voltage**  
                  2V/div, 10ms/div

Channel C2     **5.0V Output Voltage**  
                  1V/div, 10ms/div

Channel C3     **1.8V Output Voltage**  
                  1V/div, 10ms/div

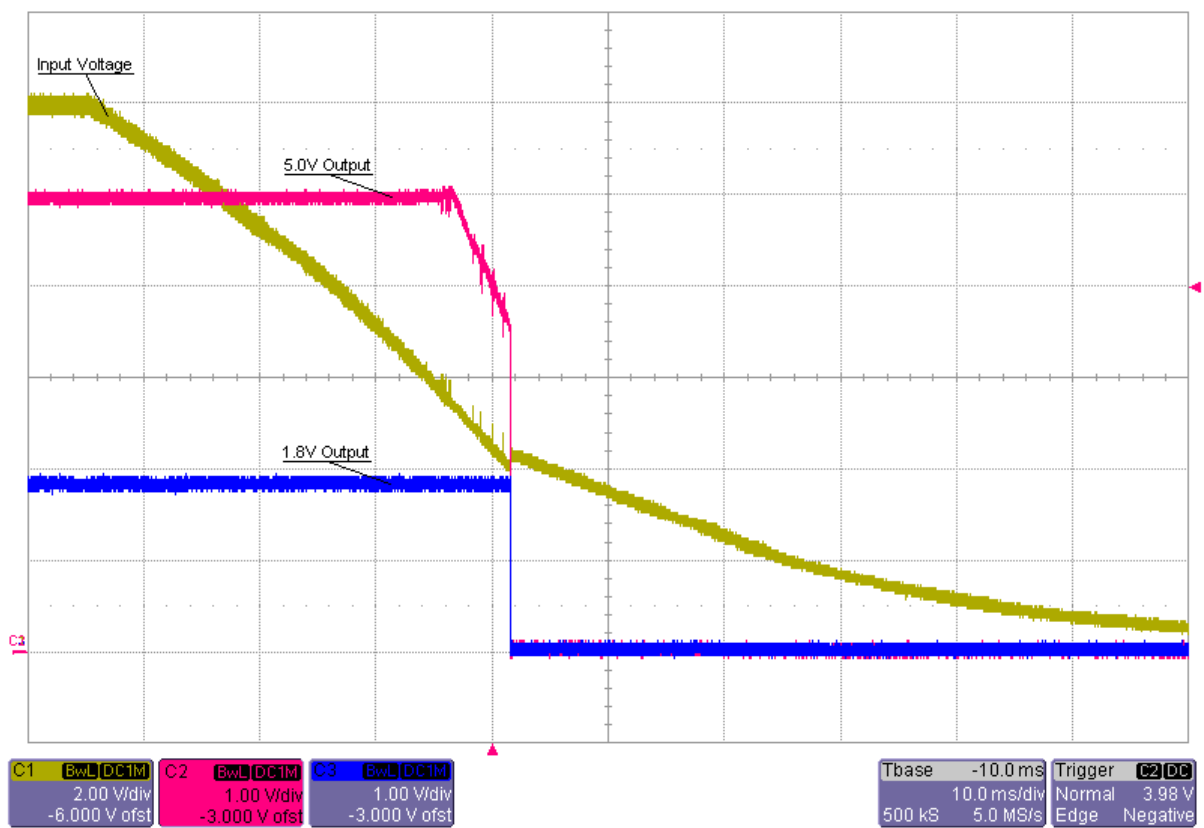


Figure 2

### 3. Efficiency – TPS54540

The efficiency and load regulation are shown in Figure 3 and Figure 4.

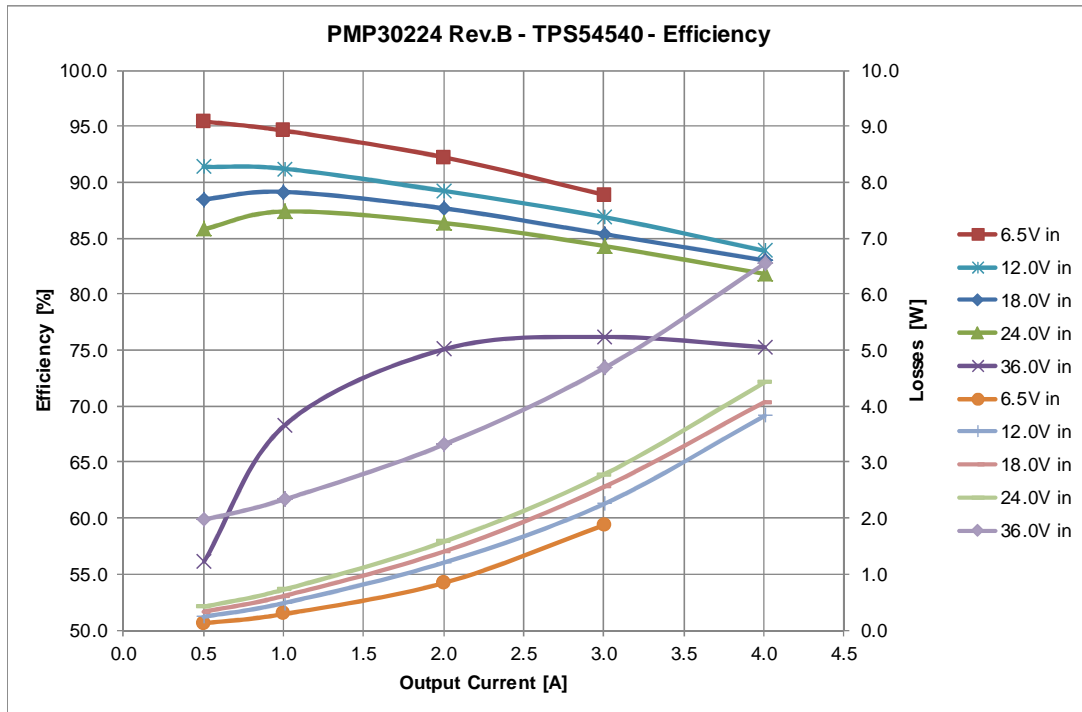


Figure 3

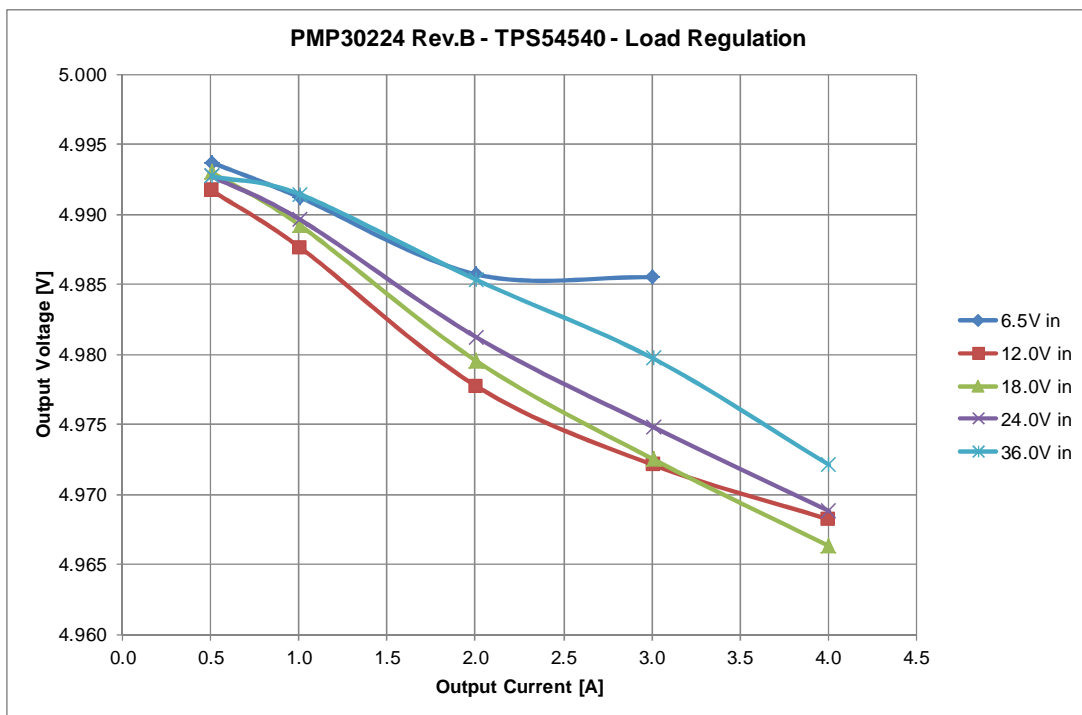


Figure 4

## 4. Transient Response – TPS54540

The response to a load step at 12.0V input voltage is shown in Figure 5.

Channel C1 **Output Current**, Load Step 1.0A to 2.0A  
1A/div, 1ms/div

Channel C2 **Output Voltage**, -82mV undershoot (1.6%), 79mV overshoot (1.6%)  
50mV/div, 1ms/div, AC coupled

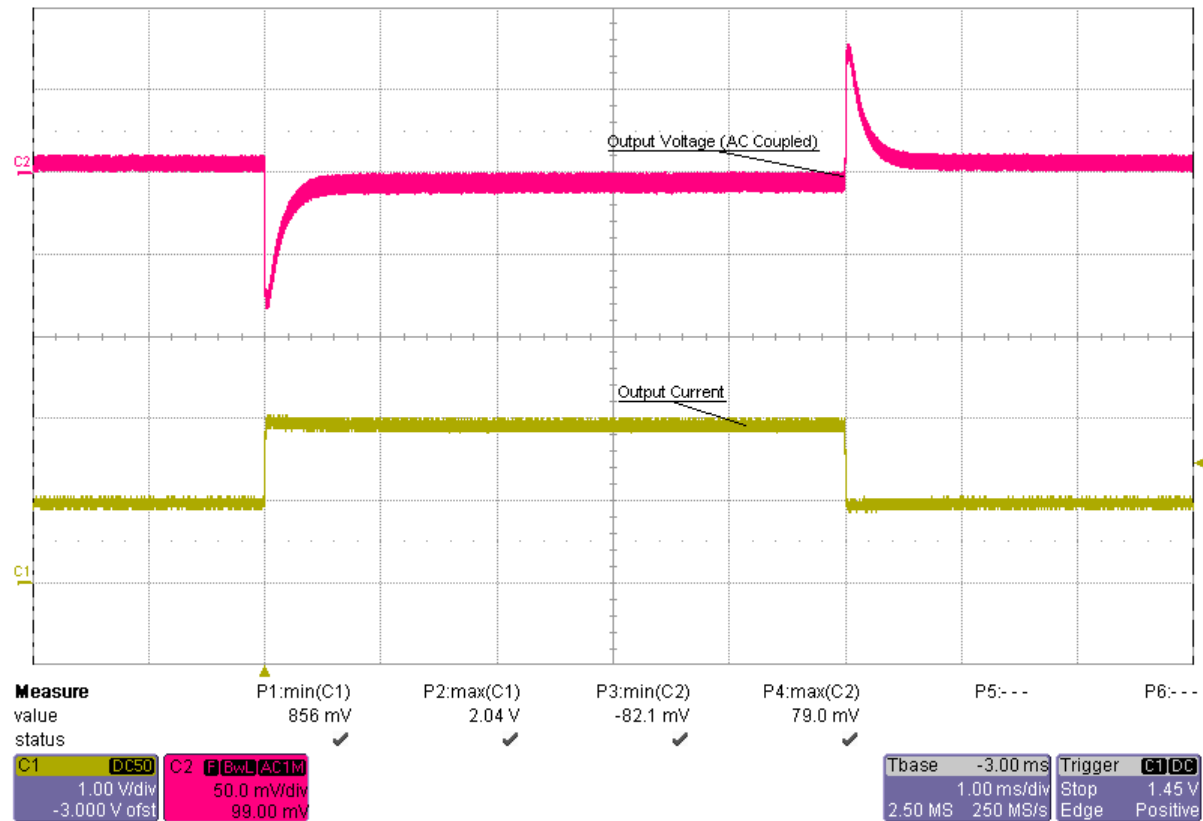


Figure 5

## 5. Frequency Response – TPS54540

6.5V Input, 1.0A Load  
 6.5V Input, 2.5A Load

36.5 kHz Bandwidth, 62 deg Phase Margin, -32 dB Gain Margin  
 38.3 kHz Bandwidth, 65 deg Phase Margin, -29 dB Gain Margin

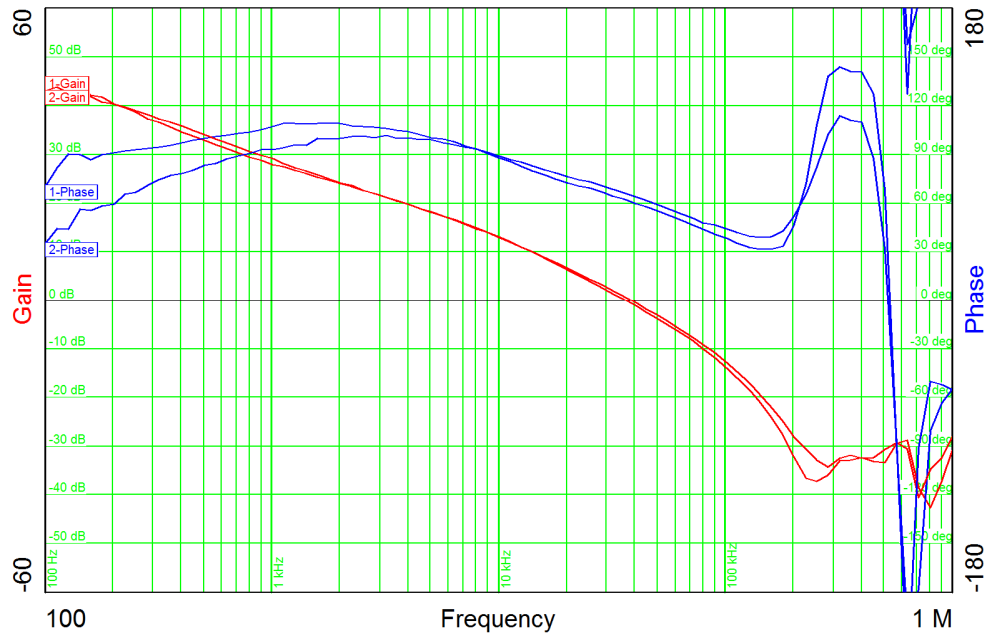


Figure 6

12.0V Input, 1.0A Load  
 12.0V Input, 2.5A Load

47.0 kHz Bandwidth, 62 deg Phase Margin, -25 dB Gain Margin  
 47.9 kHz Bandwidth, 64 deg Phase Margin, -25 dB Gain Margin

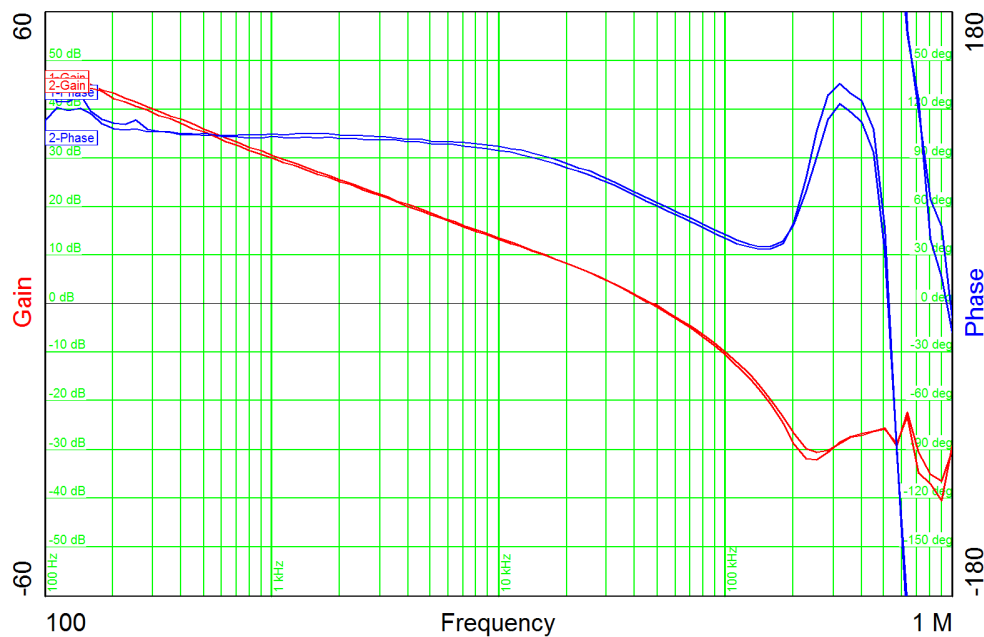


Figure 7

PMP30224 Rev.B – Test Report

18.0V Input, 1.0A Load  
 18.0V Input, 2.5A Load

65.6 kHz Bandwidth, 61 deg Phase Margin, -23 dB Gain Margin  
 70.0 kHz Bandwidth, 63 deg Phase Margin, -23 dB Gain Margin

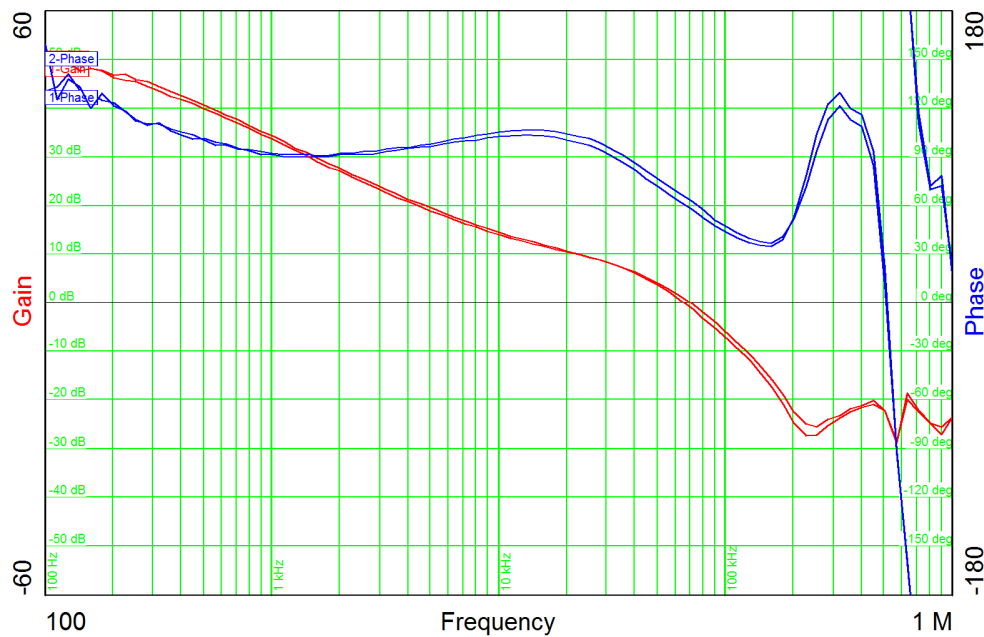


Figure 8

24.0V Input, 1.0A Load  
 24.0V Input, 2.5A Load

52.4 kHz Bandwidth, 64 deg Phase Margin, -25 dB Gain Margin  
 62.3 kHz Bandwidth, 65 deg Phase Margin, -24 dB Gain Margin

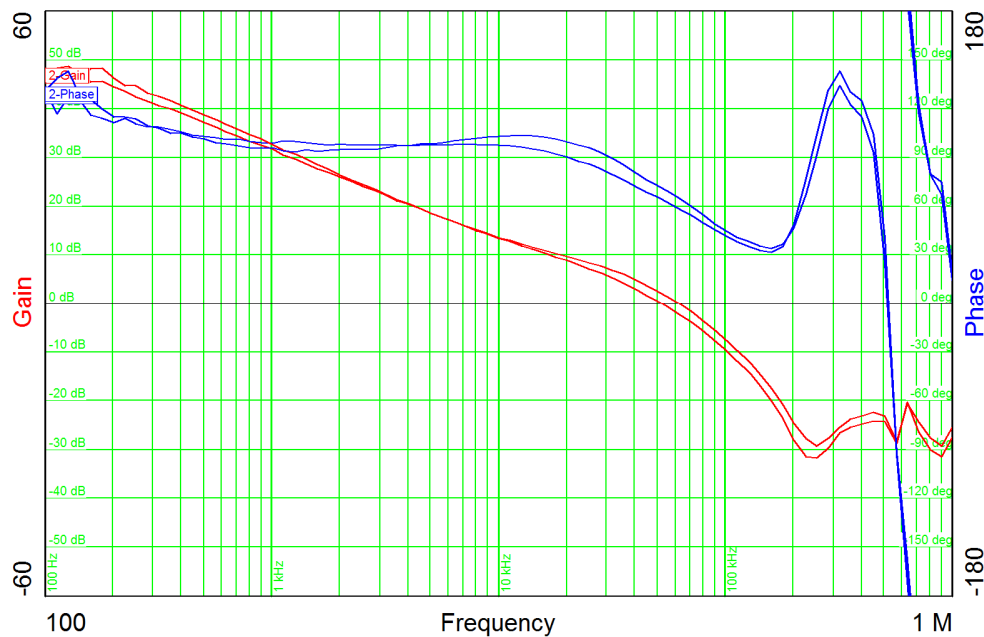
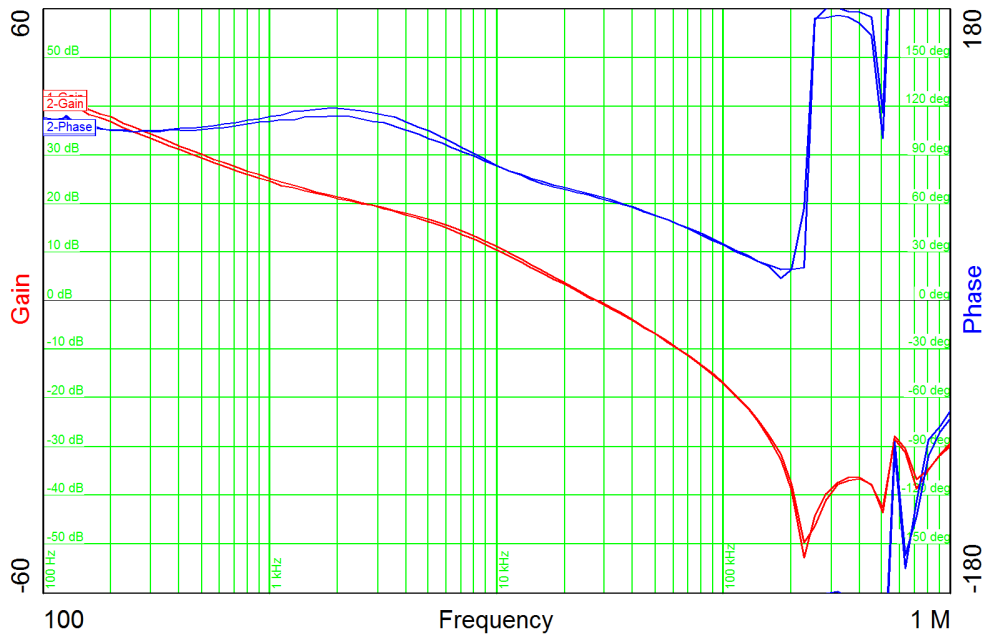


Figure 9

# PMP30224 Rev.B – Test Report

36.0V Input, 1.0A Load  
36.0V Input, 2.5A Load

27.3 kHz Bandwidth, 65 deg Phase Margin, enough Gain Margin  
30.0 kHz Bandwidth, 64 deg Phase Margin, enough Gain Margin



**Figure 10**



## PMP30224 Rev.B – Test Report

### 6. Output Ripple – TPS54540

The output ripple voltage is shown in Figure 11.

Channel M1 **Output Voltage @ 6.5V Input / 2.0A Load, 42mV peak-peak (0.8%)**

500mV/div, 2us/div

Channel M2 **Output Voltage @ 12.0V Input / 2.0A Load, 48mV peak-peak (1.0%)**

500mV/div, 2us/div

Channel M3 **Output Voltage @ 18.0V Input / 2.0A Load, 51mV peak-peak (1.0%)**

500mV/div, 2us/div

Channel M4 **Output Voltage @ 24.0V Input / 2.0A Load, 52mV peak-peak (1.0%)**

500mV/div, 2us/div

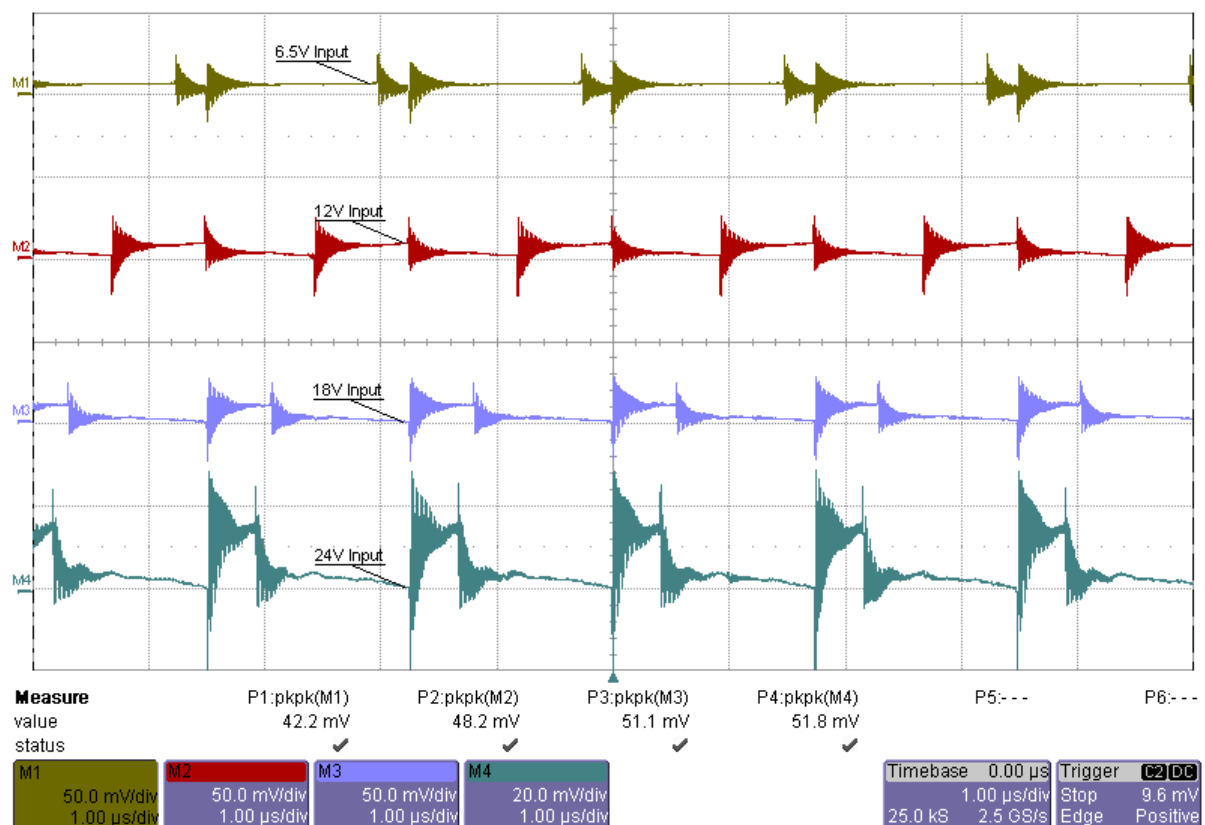


Figure 11

## 7. Switching Node – TPS54540

The switching node at 12.0V input voltage and 2.0A load on the output is shown in Figure 12.

Channel C1 **Drain-Source Voltage**, -1.5V minimum, 13.2V maximum  
2V/div, 1us/div

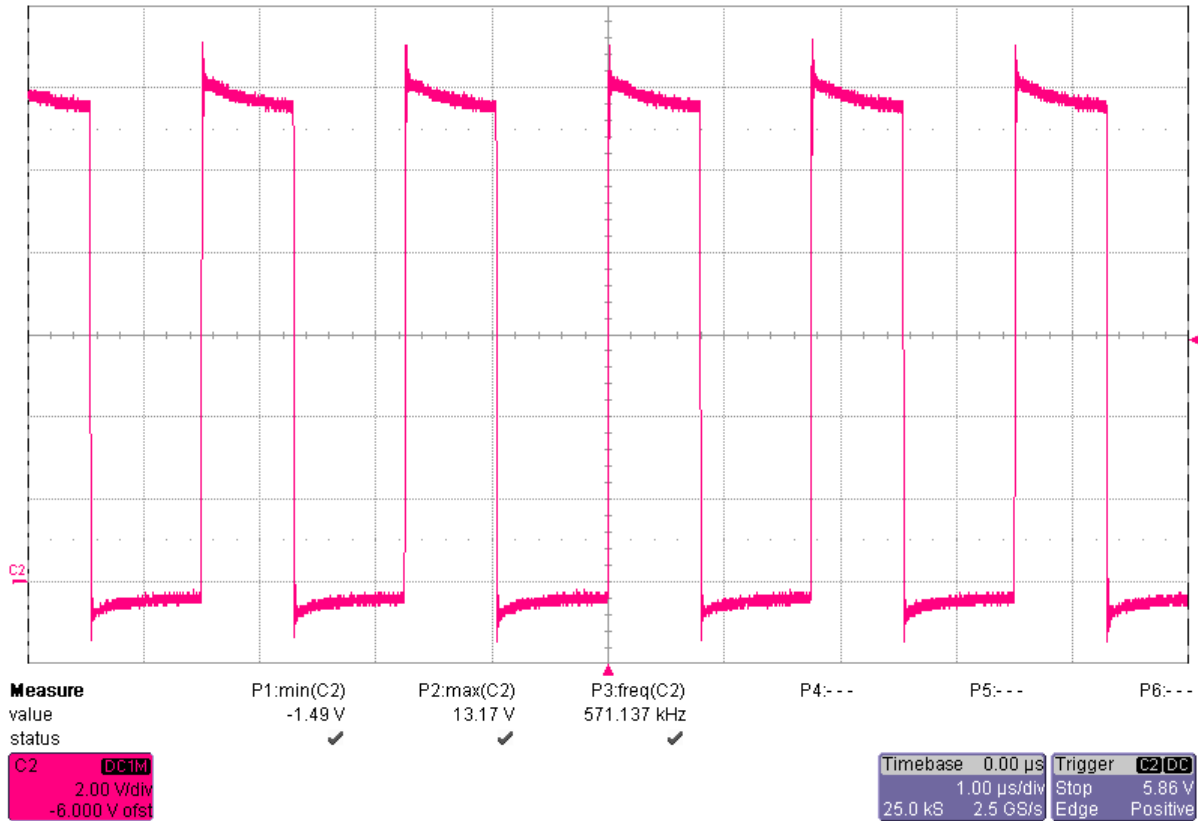


Figure 12

## 9. Thermal Image – TPS54540

The thermal image (Figure 13) shows the circuit at an ambient temperature of 21°C with an input voltage of 12.0V and 2.0A load on the output.

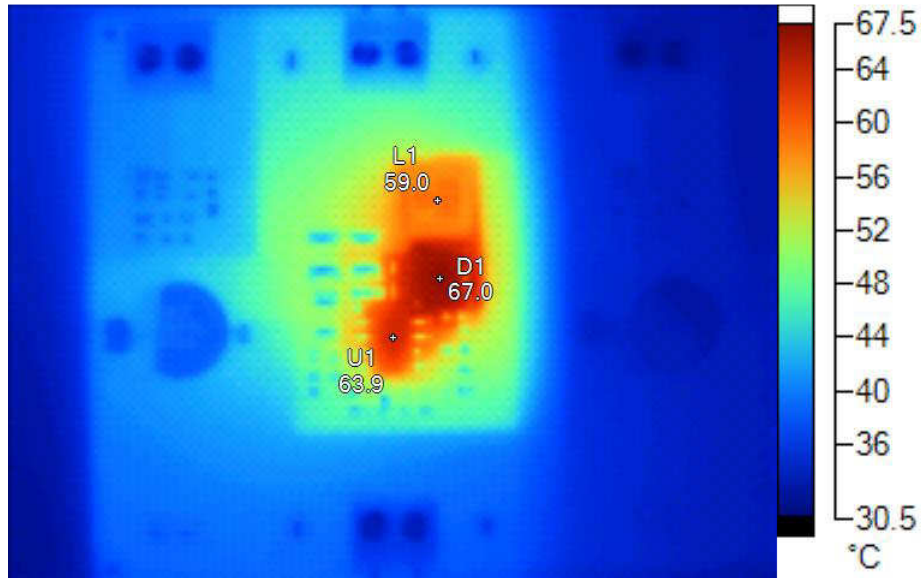


Figure 13

Name	Temperature	Emissivity	Background
U1	63.9°C	0.95	21.0°C
D1	67.0°C	0.95	21.0°C
L1	59.0°C	0.95	21.0°C

## 10. Startup – TPS54531

The startup waveform at 12.0V input voltage and no load on the outputs is shown in Figure 14. Figure 1.

Channel C1    **12.0V Input Voltage**  
2V/div, 5ms/div

Channel C2    **5.0V Output Voltage**  
1V/div, 5ms/div

Channel C3    **1.8V Output Voltage**  
1V/div, 5ms/div

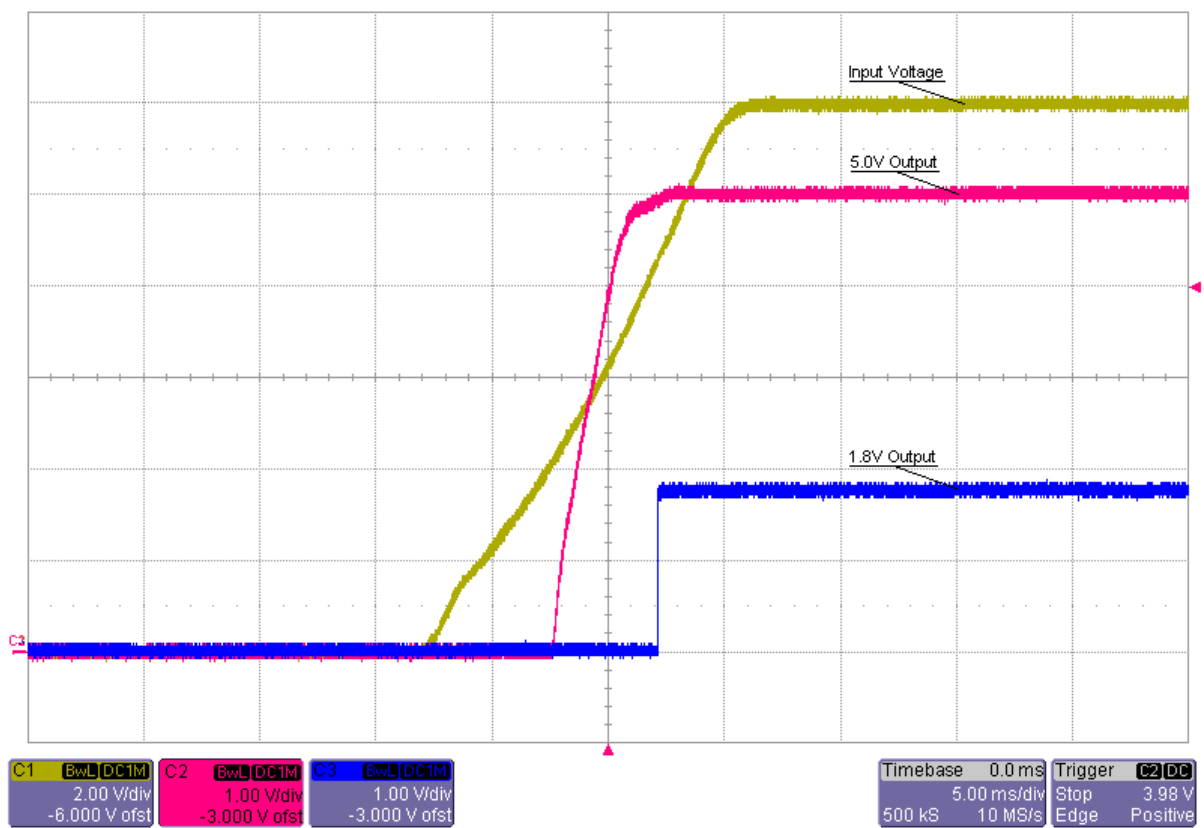


Figure 14

## 11. Shutdown – TPS54531

The shutdown waveform at 12.0V input voltage and 1.0V load on the 5.0V output and 0.075mA load on the 1.8V output are shown in Figure 15 Figure 2.

Channel C1     **12.0V Input Voltage**  
                  2V/div, 10ms/div

Channel C2     **5.0V Output Voltage**  
                  1V/div, 10ms/div

Channel C3     **1.8V Output Voltage**  
                  1V/div, 10ms/div

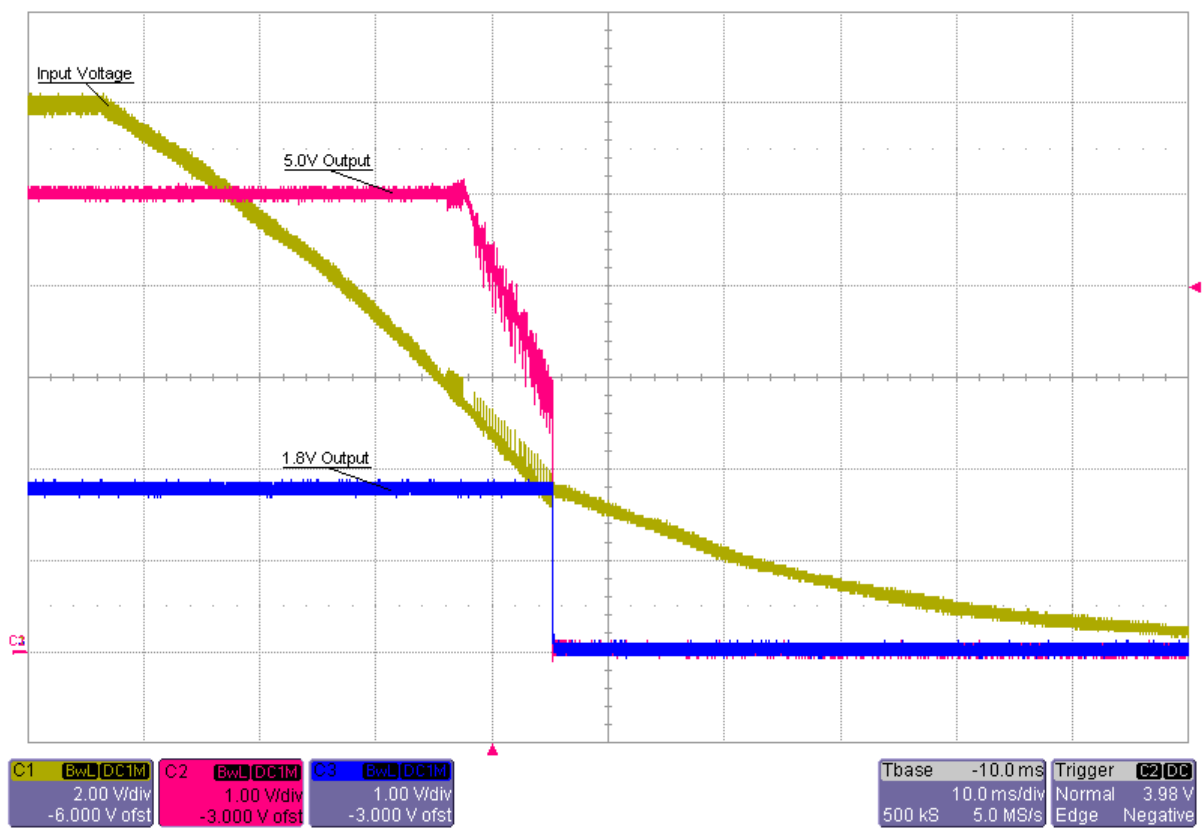


Figure 15

## 12. Efficiency – TPS54531

The efficiency and load regulation are shown in Figure 16 and Figure 17.

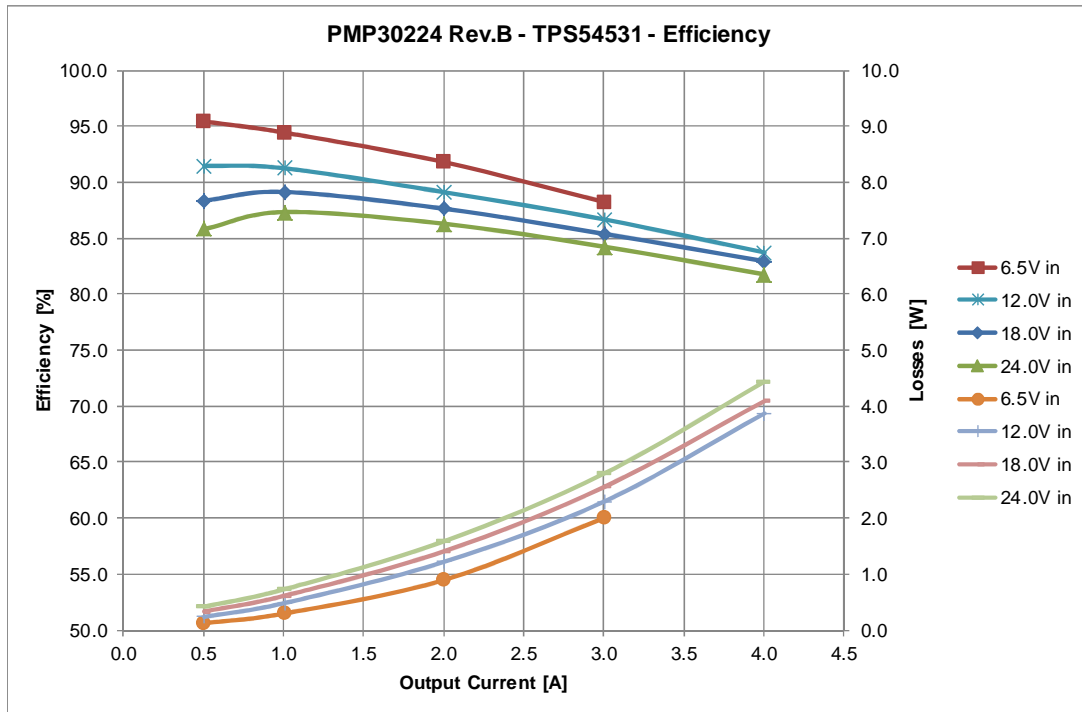


Figure 16

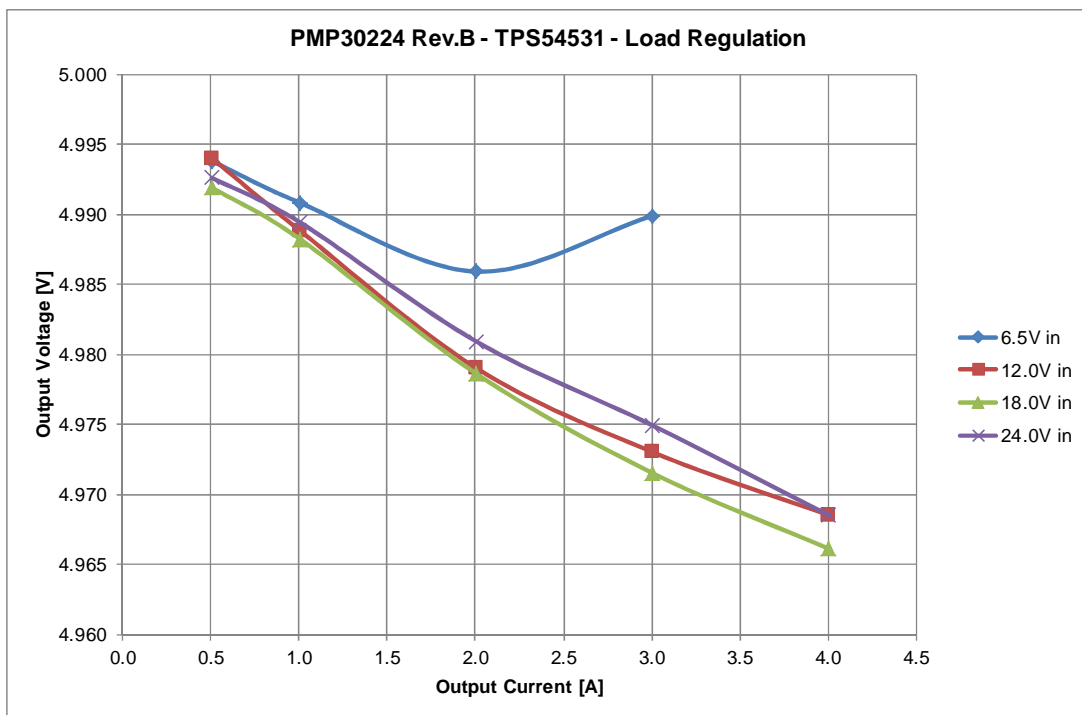


Figure 17

### 13. Transient Response – TPS54531

The response to a load step at 12.0V input voltage is shown in Figure 18Figure 5.

Channel C1 **Output Current**, Load Step 1.0A to 2.0A  
1A/div, 1ms/div

Channel C2 **Output Voltage**, -87mV undershoot (1.7%), 77mV overshoot (1.5%)  
50mV/div, 1ms/div, AC coupled

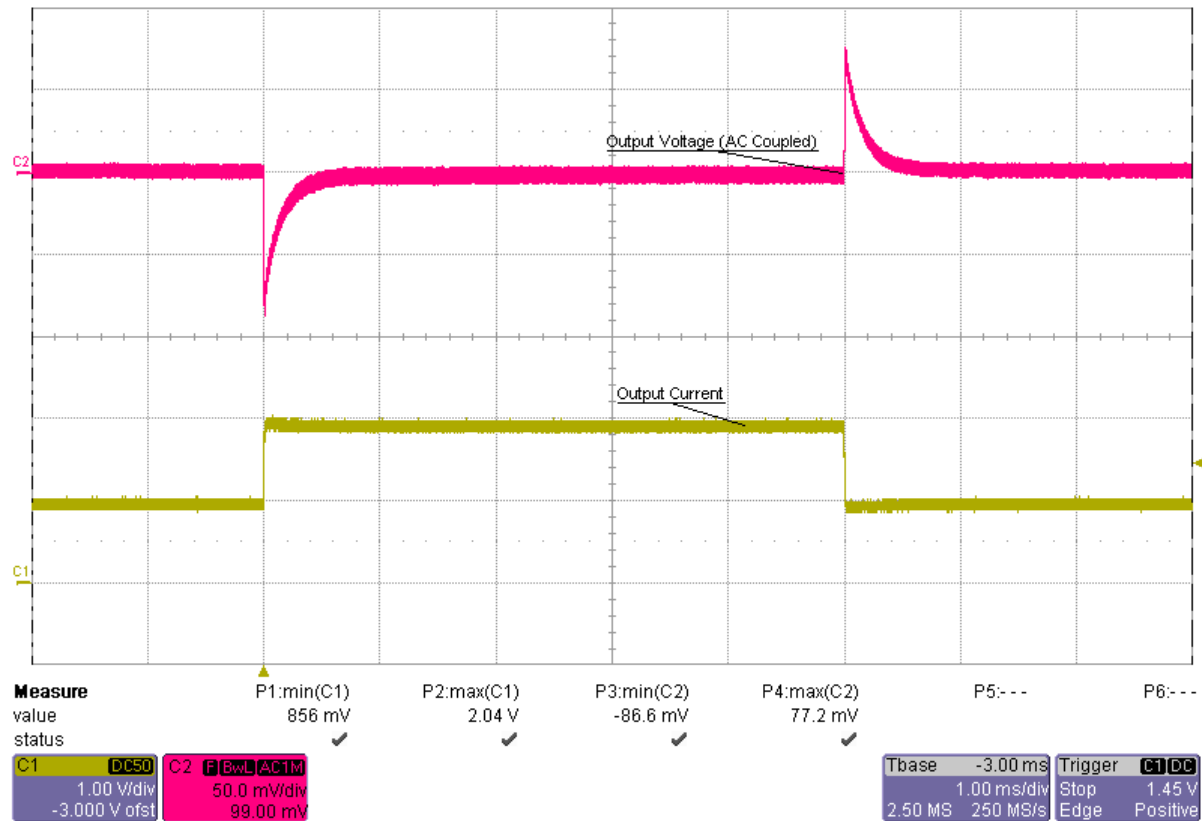


Figure 18

## 14. Frequency Response – TPS54531

6.5V Input, 1.0A Load  
6.5V Input, 2.5A Load

21.9 kHz Bandwidth, 58 deg Phase Margin, -40 dB Gain Margin  
22.7 kHz Bandwidth, 60 deg Phase Margin, -46 dB Gain Margin

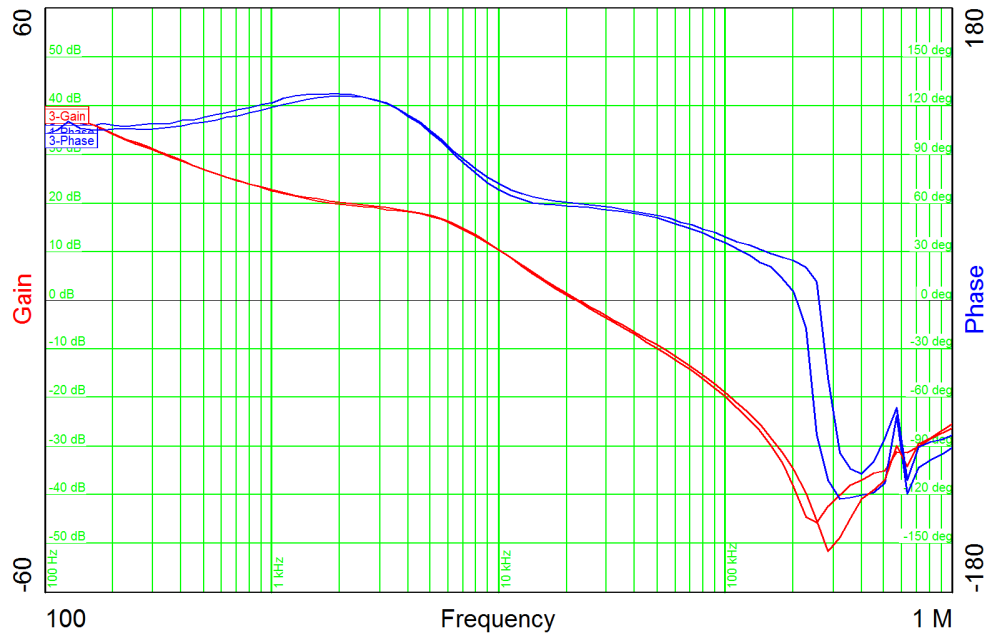


Figure 19

12.0V Input, 1.0A Load  
12.0V Input, 2.5A Load

42.0 kHz Bandwidth, 61 deg Phase Margin, -28 dB Gain Margin  
42.5 kHz Bandwidth, 61 deg Phase Margin, -28 dB Gain Margin

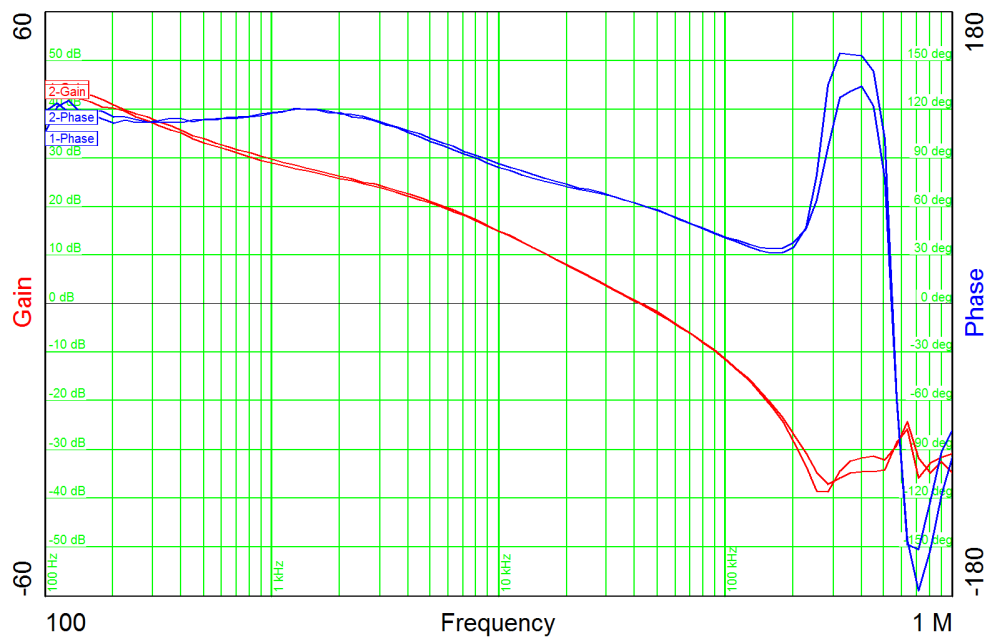


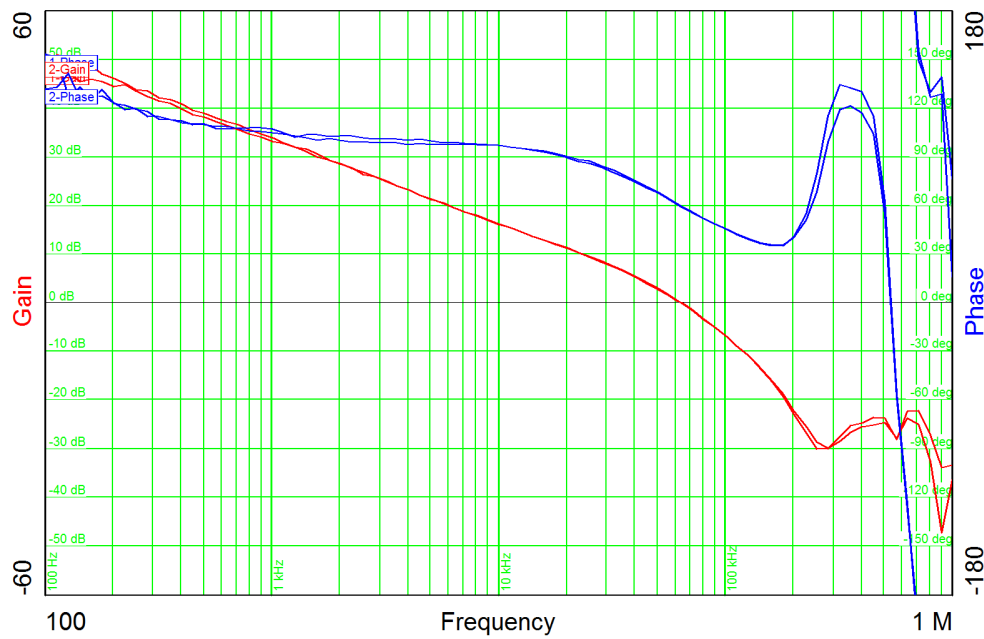
Figure 20



PMP30224 Rev.B – Test Report

18.0V Input, 1.0A Load  
 18.0V Input, 2.5A Load

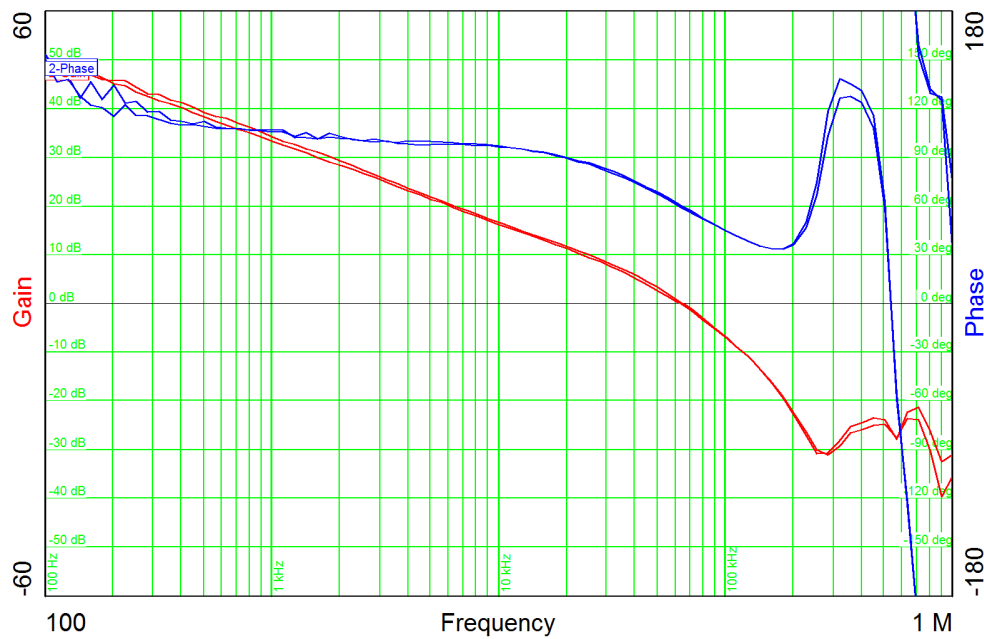
64.2 kHz Bandwidth, 60 deg Phase Margin, -27 dB Gain Margin  
 63.2 kHz Bandwidth, 60 deg Phase Margin, -27 dB Gain Margin



**Figure 21**

24.0V Input, 1.0A Load  
 24.0V Input, 2.5A Load

65.4 kHz Bandwidth, 60 deg Phase Margin, -26 dB Gain Margin  
 63.0 kHz Bandwidth, 60 deg Phase Margin, -26 dB Gain Margin



**Figure 22**

## 15. Output Ripple – TPS54531

The output ripple voltage is shown in Figure 23Figure 11.

Channel M1 **Output Voltage @ 6.5V Input / 2.0A Load, 40mV peak-peak (0.8%)**  
500mV/div, 2us/div

Channel M2 **Output Voltage @ 12.0V Input / 2.0A Load, 46mV peak-peak (0.9%)**  
500mV/div, 2us/div

Channel M3 **Output Voltage @ 18.0V Input / 2.0A Load, 47mV peak-peak (0.9%)**  
500mV/div, 2us/div

Channel M4 **Output Voltage @ 24.0V Input / 2.0A Load, 48mV peak-peak (1.0%)**  
500mV/div, 2us/div

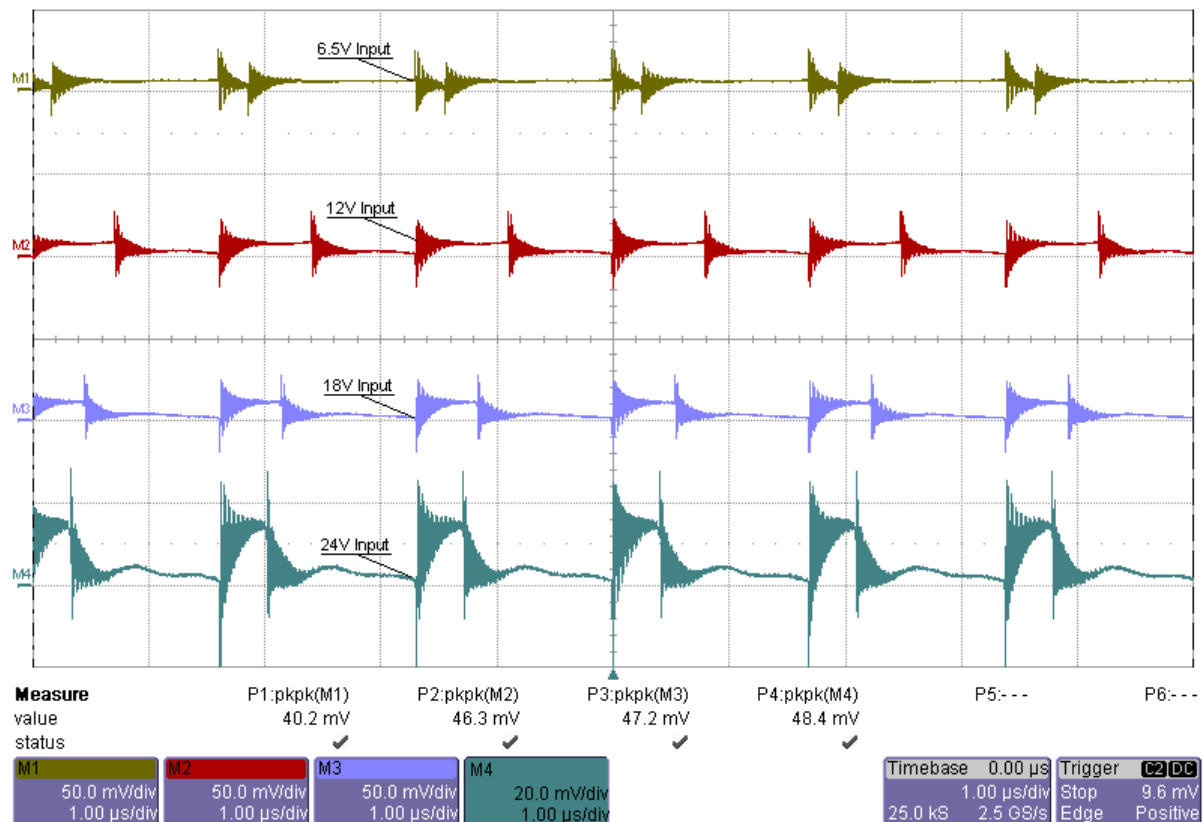


Figure 23

## 16. Switching Node – TPS54531

The switching node at 12.0V input voltage and 2.0A load on the output is shown in Figure 24. Figure 12.

Channel C1 **Drain-Source Voltage**, -1.3V minimum, 12.8V maximum  
2V/div, 1us/div

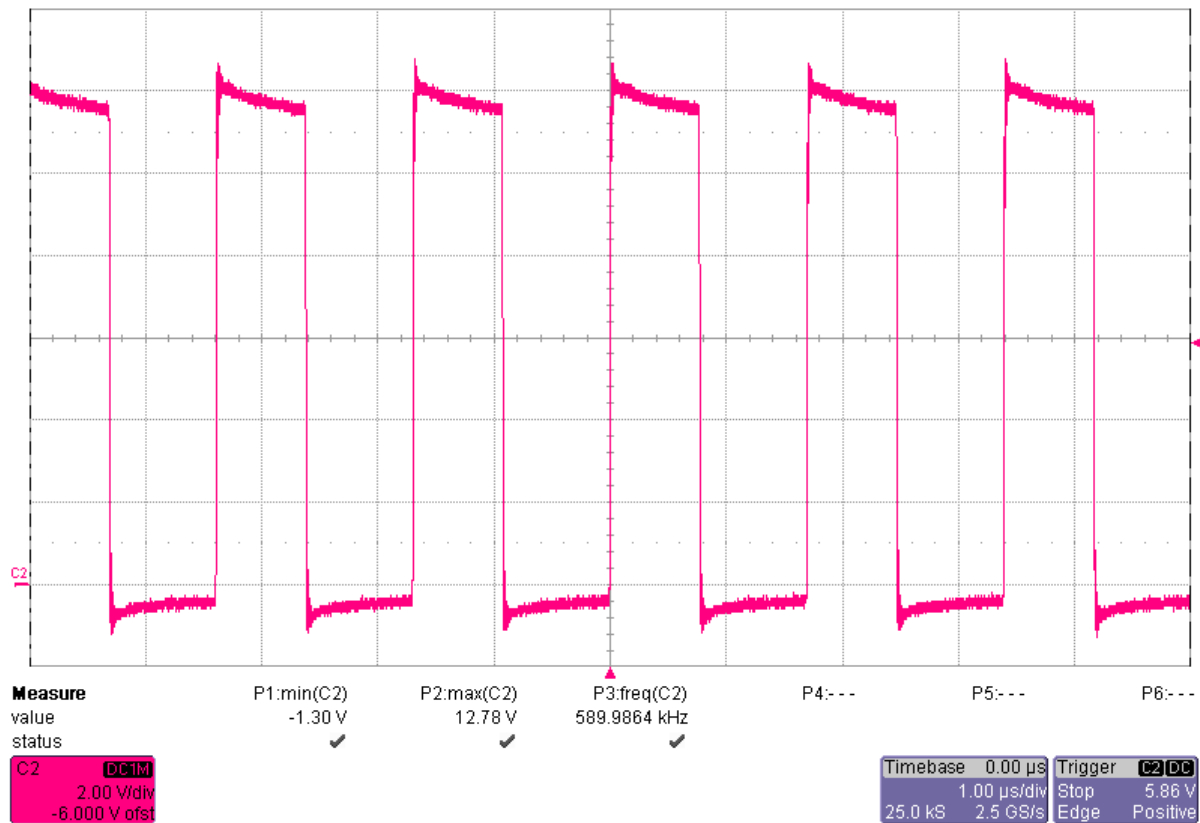


Figure 24

## 18. Thermal Image – TPS54531

The thermal image (Figure 25) shows the circuit at an ambient temperature of 21°C with an input voltage of 12.0V and 2.0A load on the output.

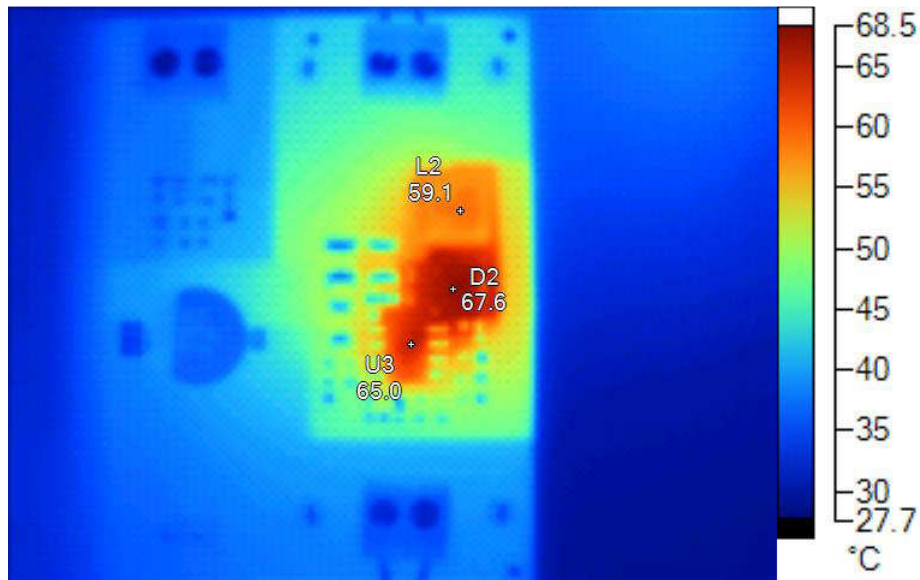


Figure 25

Name	Temperature	Emissivity	Background
U3	65.0°C	0.95	21.0°C
D2	67.6°C	0.95	21.0°C
L2	59.1°C	0.95	21.0°C

## IMPORTANT NOTICE FOR TI DESIGN INFORMATION AND RESOURCES

Texas Instruments Incorporated ("TI") technical, application or other design advice, services or information, including, but not limited to, reference designs and materials relating to evaluation modules, (collectively, "TI Resources") are intended to assist designers who are developing applications that incorporate TI products; by downloading, accessing or using any particular TI Resource in any way, you (individually or, if you are acting on behalf of a company, your company) agree to use it solely for this purpose and subject to the terms of this Notice.

TI's provision of TI Resources does not expand or otherwise alter TI's applicable published warranties or warranty disclaimers for TI products, and no additional obligations or liabilities arise from TI providing such TI Resources. TI reserves the right to make corrections, enhancements, improvements and other changes to its TI Resources.

You understand and agree that you remain responsible for using your independent analysis, evaluation and judgment in designing your applications and that you have full and exclusive responsibility to assure the safety of your applications and compliance of your applications (and of all TI products used in or for your applications) with all applicable regulations, laws and other applicable requirements. You represent that, with respect to your applications, you have all the necessary expertise to create and implement safeguards that (1) anticipate dangerous consequences of failures, (2) monitor failures and their consequences, and (3) lessen the likelihood of failures that might cause harm and take appropriate actions. You agree that prior to using or distributing any applications that include TI products, you will thoroughly test such applications and the functionality of such TI products as used in such applications. TI has not conducted any testing other than that specifically described in the published documentation for a particular TI Resource.

You are authorized to use, copy and modify any individual TI Resource only in connection with the development of applications that include the TI product(s) identified in such TI Resource. NO OTHER LICENSE, EXPRESS OR IMPLIED, BY ESTOPPEL OR OTHERWISE TO ANY OTHER TI INTELLECTUAL PROPERTY RIGHT, AND NO LICENSE TO ANY TECHNOLOGY OR INTELLECTUAL PROPERTY RIGHT OF TI OR ANY THIRD PARTY IS GRANTED HEREIN, including but not limited to any patent right, copyright, mask work right, or other intellectual property right relating to any combination, machine, or process in which TI products or services are used. Information regarding or referencing third-party products or services does not constitute a license to use such products or services, or a warranty or endorsement thereof. Use of TI Resources may require a license from a third party under the patents or other intellectual property of the third party, or a license from TI under the patents or other intellectual property of TI.

TI RESOURCES ARE PROVIDED "AS IS" AND WITH ALL FAULTS. TI DISCLAIMS ALL OTHER WARRANTIES OR REPRESENTATIONS, EXPRESS OR IMPLIED, REGARDING TI RESOURCES OR USE THEREOF, INCLUDING BUT NOT LIMITED TO ACCURACY OR COMPLETENESS, TITLE, ANY EPIDEMIC FAILURE WARRANTY AND ANY IMPLIED WARRANTIES OF MERCHANTABILITY, FITNESS FOR A PARTICULAR PURPOSE, AND NON-INFRINGEMENT OF ANY THIRD PARTY INTELLECTUAL PROPERTY RIGHTS.

TI SHALL NOT BE LIABLE FOR AND SHALL NOT DEFEND OR INDEMNIFY YOU AGAINST ANY CLAIM, INCLUDING BUT NOT LIMITED TO ANY INFRINGEMENT CLAIM THAT RELATES TO OR IS BASED ON ANY COMBINATION OF PRODUCTS EVEN IF DESCRIBED IN TI RESOURCES OR OTHERWISE. IN NO EVENT SHALL TI BE LIABLE FOR ANY ACTUAL, DIRECT, SPECIAL, COLLATERAL, INDIRECT, PUNITIVE, INCIDENTAL, CONSEQUENTIAL OR EXEMPLARY DAMAGES IN CONNECTION WITH OR ARISING OUT OF TI RESOURCES OR USE THEREOF, AND REGARDLESS OF WHETHER TI HAS BEEN ADVISED OF THE POSSIBILITY OF SUCH DAMAGES.

You agree to fully indemnify TI and its representatives against any damages, costs, losses, and/or liabilities arising out of your non-compliance with the terms and provisions of this Notice.

This Notice applies to TI Resources. Additional terms apply to the use and purchase of certain types of materials, TI products and services. These include; without limitation, TI's standard terms for semiconductor products (<http://www.ti.com/sc/docs/stdterms.htm>), [evaluation modules](#), and [samples](http://www.ti.com/sc/docs/sampterm.htm) (<http://www.ti.com/sc/docs/sampterm.htm>).

Mailing Address: Texas Instruments, Post Office Box 655303, Dallas, Texas 75265  
Copyright © 2017, Texas Instruments Incorporated