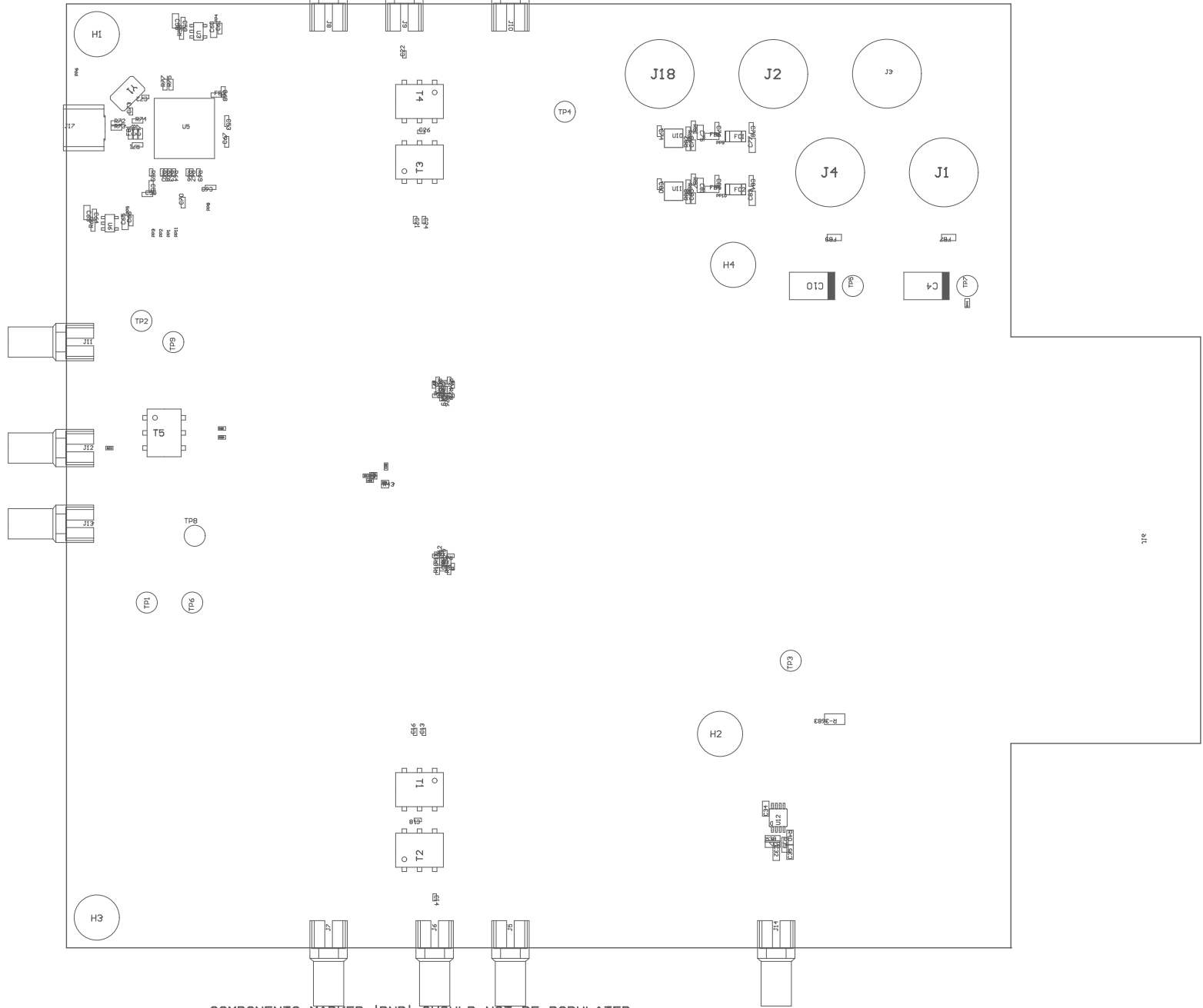
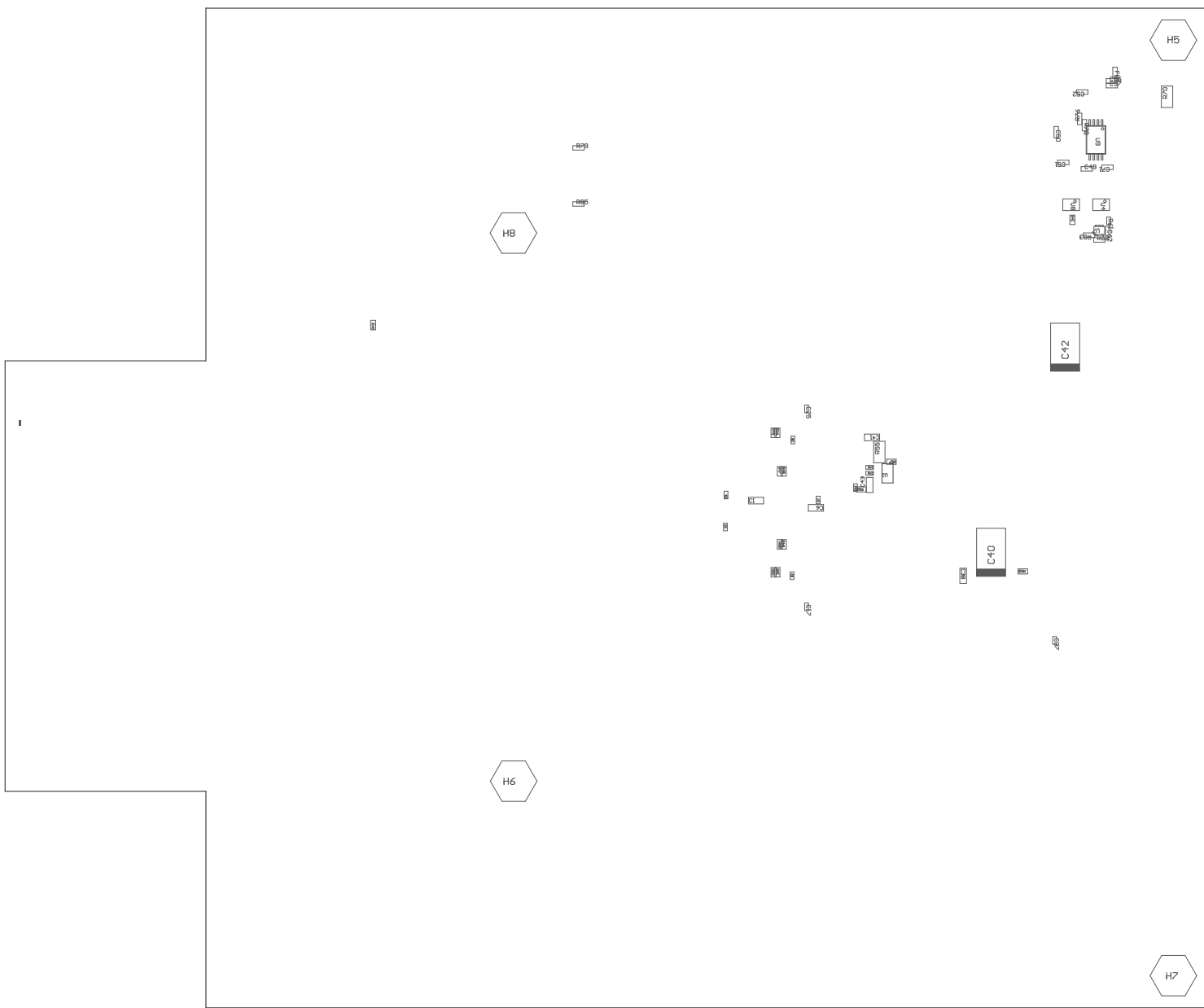


- Refer to ODB++ file for specific component location information.
- Assembly must be RoHS compliant and lead free
- These assemblies must comply with workmanship standards IPC-A-610 Class 2, unless otherwise specified.
- Install label in silkscreened box after final wash. Text shall be 8 pt font. Text shall be per the Label Table in the PDF schematic.



COMPONENTS MARKED 'DNP' SHOULD NOT BE POPULATED.  
ASSEMBLY VARIANT: 002

PCB VIEWED FROM TOP SIDE	BOARD #:	ADC36xxEUM0VALREV: A	SUN REV: Not in version control
ASSEMBLY TOP	TID #:	N/A	
PLOT NAME =	GENERATED	: 11/2/2023 6:27:10 AM	TEXAS INSTRUMENTS



COMPONENTS MARKED 'DNP' SHOULD NOT BE POPULATED.  
ASSEMBLY VARIANT: 002

PCB VIEWED FROM BOTTOM SIDE	BOARD #: ADC36xxEVM	VALREV: A	SUN REV: Not in version control
ASSEMBLY BOTTOM	TID #:	N/A	
PLOT NAME =	GENERATED	: 11/2/2023 6:27:23 AM	TEXAS INSTRUMENTS