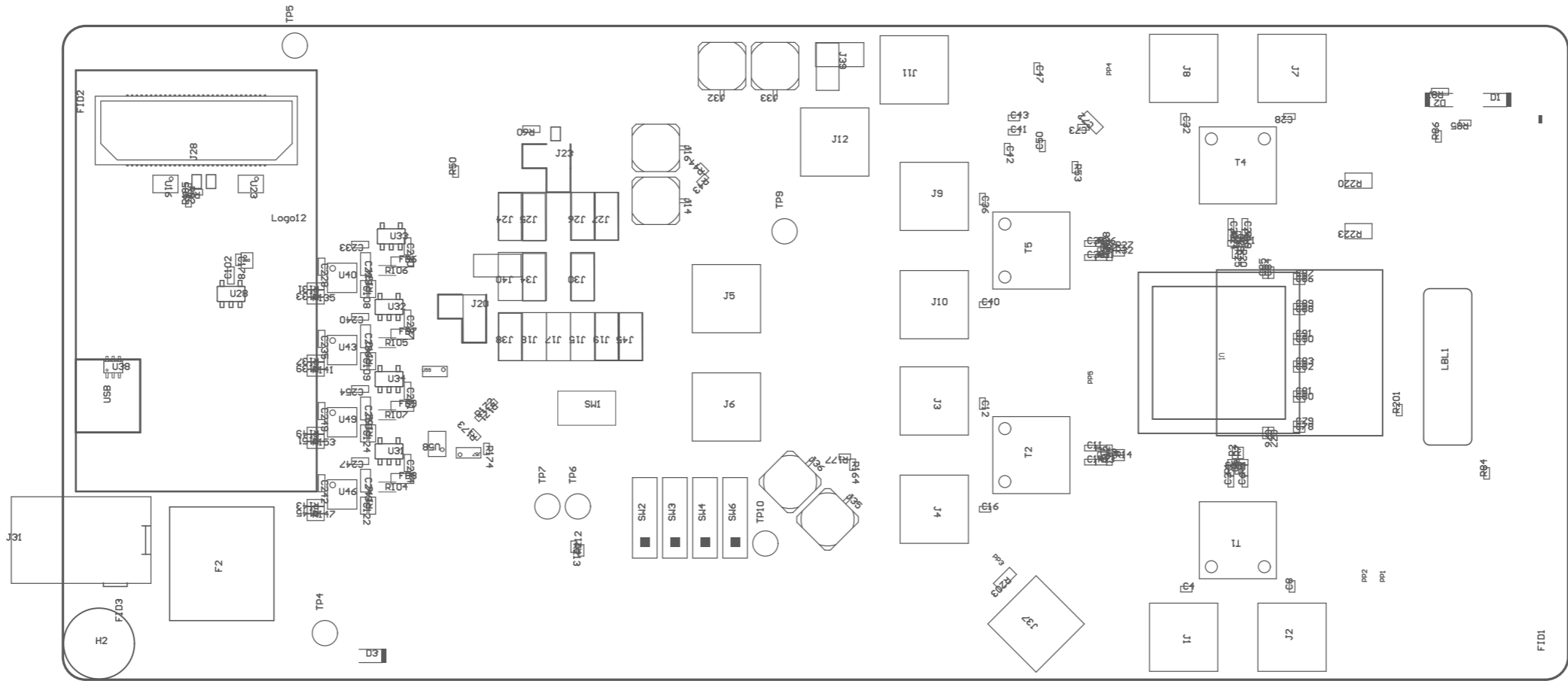


Z24 ■ These assemblies must comply with workmanship standards IPC-A-610 Class 2, unless otherwise specified.

Z23 ■ These assemblies must be clean and free from flux and all contaminants. Use of no clean flux is not acceptable.

Z22 ■ These assemblies are ESD sensitive, ESD precautions shall be observed.

Z21 ■ Install label in silkscreened box after final wash. Text shall be 8 pt font. Text shall be per the Label Table in the PDF schematic.



COMPONENTS MARKED 'DNP' SHOULD NOT BE POPULATED.  
ASSEMBLY VARIANT: 001-ADC34RF72

PCB VIEWED FROM TOP SIDE	BOARD #: -	REV: A	SUN REV: cfec0883921a2ab84ee9ab1a05e8e2aa5b45f222 [Locally Modified]
PLOT NAME = Top Assembly Drawing	GENERATED : 3/13/2025 1:34:04 PM		TEXAS INSTRUMENTS

